



UNACCEPTABLE WORSHIP

Malachi 1:6 – 2:9

(p. 960)

Malachi: A spiritual health-check

God asks: where is the honour due to me?

Malachi 1:6

Malachi: A spiritual health-check

Inadequate sacrifices

Malachi 1:6–14

Malachi: A spiritual health-check

contempt for God's name

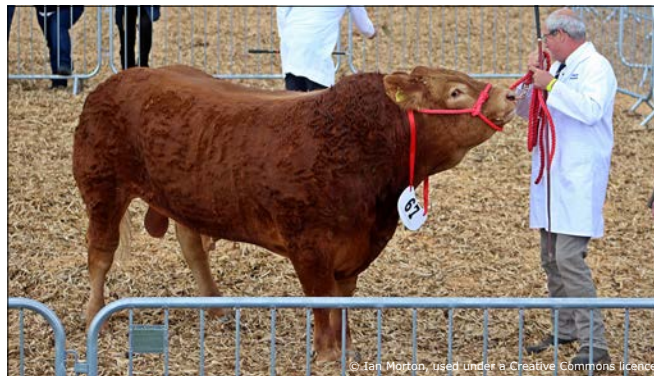
Malachi 1:6

Malachi: A spiritual health-check

sub-standard offerings

Malachi 1:7–8,12–14

Malachi: A spiritual health-check



If an animal has a defect, is lame or blind, or has any serious flaw, you must not sacrifice it to the LORD your God.
Deuteronomy 15:21

Malachi: A spiritual health-check

Stop wasting everyone's time!

Malachi 1:10

Malachi: A spiritual health-check

But the day will come when God's name is honoured everywhere

Malachi 1:11

Malachi: A spiritual health-check

Inadequate priests

Malachi 2:1-9

Malachi: A spiritual health-check

sub-standard commitment to honour God's name

Malachi 2:1-4

Malachi: A spiritual health-check

sub-standard teaching

Malachi 2:5-9

Malachi: A spiritual health-check

Perfect worship

Malachi: A spiritual health-check

perfect honour for God

Malachi: A spiritual health-check

perfect teaching

Malachi: A spiritual health-check

a perfect priest

Malachi: A spiritual health-check



God will be honoured everywhere

Malachi: A spiritual health-check