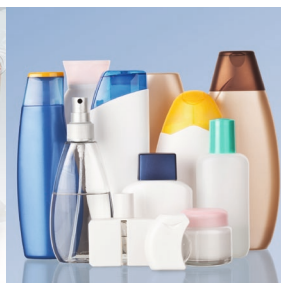
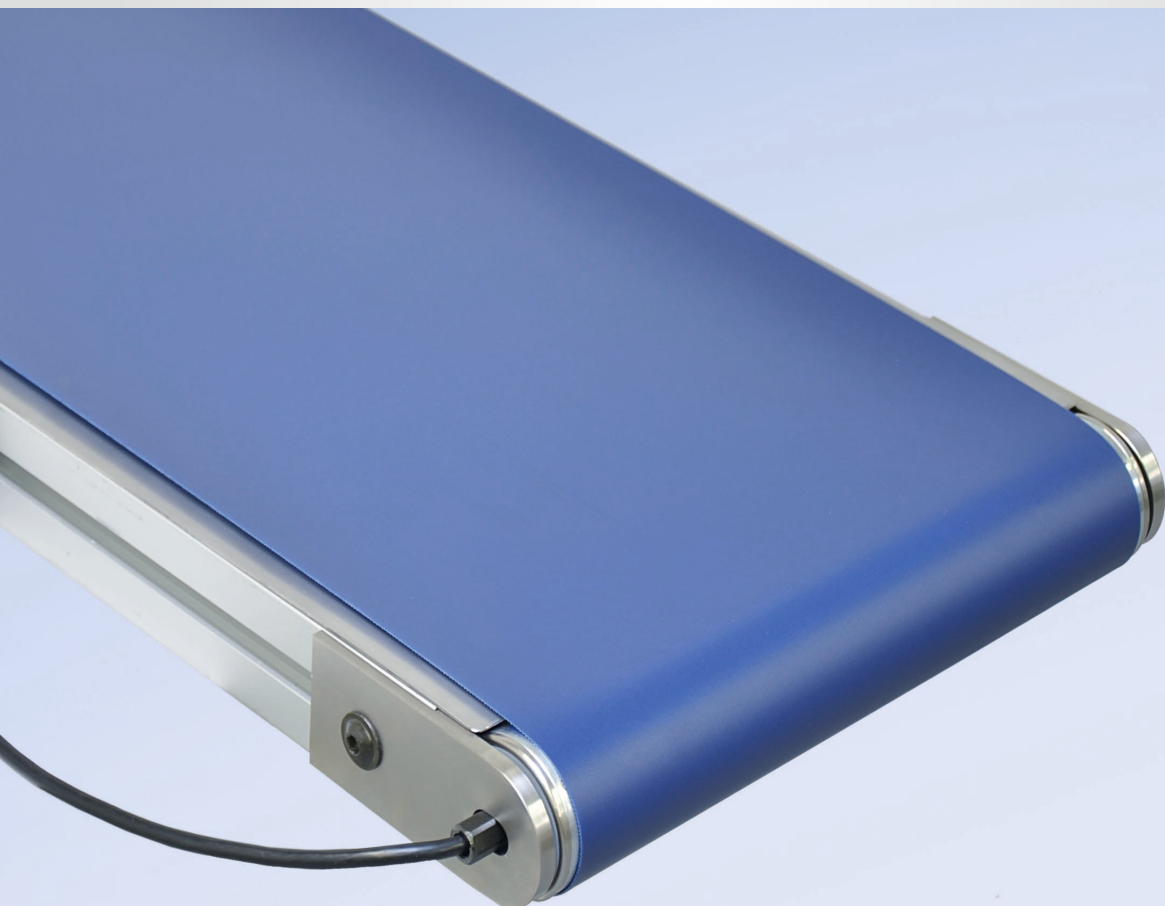




# Belt Conveyor GUF-P 2045



*Compact. Light. Inexpensive.*



# Belt Conveyor GUF-P 2045

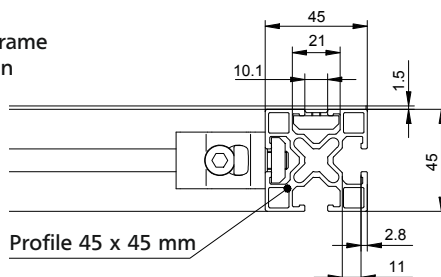


## *Compact structure for optimal integration*

The new, extremely compact GUF-P 2045 belt conveyor is outstandingly suited for integration in units with minimal installation space. The  $\varnothing$  50 mm motorized rollers combined with the weight-optimized 45 mm high conveyor frame profiles, results in an extremely flat conveyor without interference contours. The permissible total load of 15 kg is suited for the majority of products that are typical in the packaging and plastics industry. The speed is configured via the associated control box that is

prepared for connection to a customer-provided power supply (24 V DC). Four different belts are available, which either enable accumulated operation or ensure good traction. Reversing operation is also possible with the GUF-P 2045. Stands, side rails, Reglomats, as well as lateral cleats, are available as accessories! See the mk Conveyor Technology catalog. The motorized roller, the sub belt metal, and the idler drum are optionally available in stainless steel.

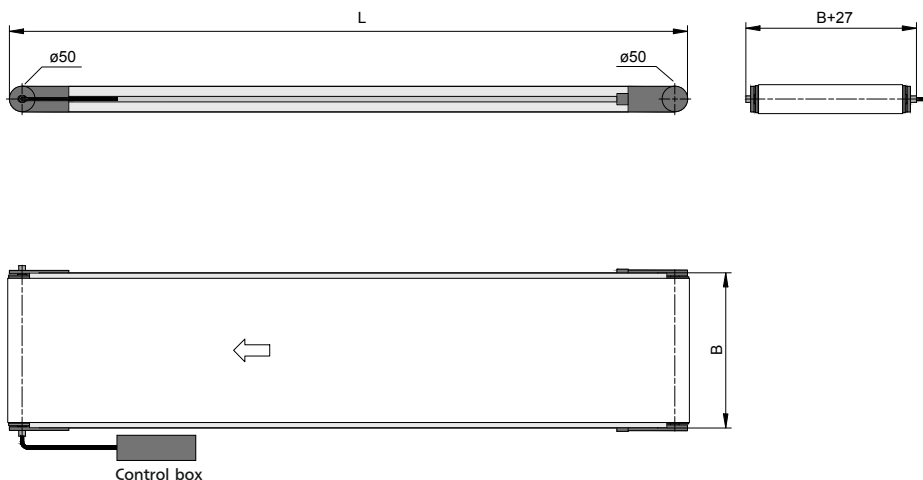
Conveyor frame  
cross-section



# GUF-P 2045 CA

Belt conveyor with driven roller

B20.45.001



## Features

	Technical information	Comments
Conveyor length L	between 600-2500 mm	any increment possible
Conveyor widths B	275, 300, 350, 400, 500 and 600 mm	length-width ratio at least 2:1
Belt width	B-20 mm	
Belt types	GU-U0302-001WE	good traction, white, FDA
	GU-V0203-006DG	accumulation limited, green
	GU-U0202-053LB	accumulation limited, blue, FDA
	GU-U0303-054LB	good traction, blue, FDA
Speed [m/min]	3,7   4,9   6,1   7,3   8,6   9,8   11   12,2   13,4   14,6   15,9   17   18,3   19,5   22   23,1   24,4   25,4	configurable via provided control box (IP20, higher on request) cable length 1 m (optional 1.5 m)
Load capacity	total load to 15 kg	accumulated operation: max. 5 kg indexing: max. 10 kg
Indexing	max. 900 cycles/hour	minimum times: 2s ON/2s OFF



**Maschinenbau Kitz GmbH**  
**Headquarters of the**  
**mk Technology Group**

Ampèrestraße 18  
53844 Troisdorf  
Germany

Phone +49 228 4598-0  
Fax +49 228 453145

[www.mk-group.com](http://www.mk-group.com)  
[info@mk-group.com](mailto:info@mk-group.com)