

Stellar® TMAX™ 30K

Steel and Aluminum Mechanics Service Body



GUIDE TO FEATURES AND BENEFITS

Designed to serve municipal markets, contractors, rental houses, light equipment dealers and others needing a service crane that lifts 6,000 pounds or less. The Stellar® TMAX™ 30K series of bodies weighs up to 1,300-pounds less than the heavy-duty counter part, the Stellar® TMAX™ 1 service body.



Our People. Our Products.

STELLAR[®] TMAX[™] 30K MECHANICS SERVICE BODY



- Complete undercoating, with minimum of 3 mils of petroleum base material, provides extra protection from corrosion and road debris.

- Bodies are finished with two-part polyurethane enamel.

- Rugged 14-gauge two-sided A-40 galvaneal steel body shell.

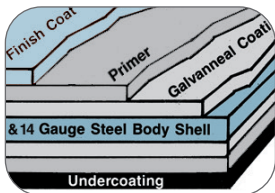
- 3-Point compression latches positively compress compartment weather strip for weather tightness, while allowing easy access.



- Every Stellar mechanic service body features our torq-isolator crane support design and isolates the crane compartment from the rest of the side pack. Lifting stresses are transferred to the stabilizers and box-type subframe, not the compartment doors.

- Stainless steel billet style hinge has hidden fasteners and a rugged 5/16" stainless steel rod. All combined to stand up to years of heavy use.

- For reduced truck weight and added corrosion protection, the doors are made of 5000 series aluminum and feature a two-panel design with a mechanically and chemically bonded internal hat channel to offer ultimate strength and greater resistance to bending.



Complete undercoating, with minimum of 3 mils of petroleum base material, provides extra protection from corrosion and road debris.



250-lb capacity adjustable divider shelves made of spangled galvanized steel.



12-gauge double panel tailgate with hinged arm brackets to provide a stout working surface.



Heavy-duty steel drawer system. Rated to hold up to the rigors of heavy-duty use. 500 lb capacity drawer slides and hardware, carry a full lifetime warranty. (Optional heavy-duty aluminum available).

The TMAX[™] 30K Steel body is designed to accept a 35,000 foot-pound rated service crane or smaller (The Stellar[®] 6521 crane or smaller), the TMAX 30K features the Stellar[®] Torq-Isolator torsion box understructure and crane compartment which isolates the cranes lifting forces into the stabilizers and chassis frame, not into the storage compartments. The body side compartments are constructed of 14-ga. galvaneal steel, with double-panel aluminum doors with a bonded internal hat channel for ultimate strength while still reducing overall weight. It uses stainless steel billet style hinges, 3-point stainless steel compression latches, and double spring over center door closures to keep door in a positive open or closed position. The body (in both the steel and aluminum versions) are completely undercoated for added protection from corrosion, and a two-part polyurethane enamel paint is also used for added protection and visual appeal.



- Side packs are constructed of 1/8" aluminum with highly engineered forming, welding, connecting and supporting techniques to give superior tool carrying capability and extreme corrosion resistance.

PATENT PENDING

- Extruded top with accessory mounting rail.



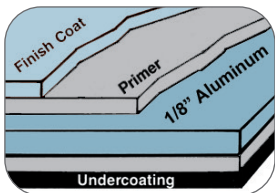
- Bodies are finished with two-part polyurethane enamel.

- 3-Point compression latches positively compress compartment weather strip for weather tightness, while allowing easy access.

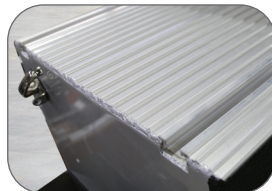
- Every Stellar mechanic service body features our torq-isolator crane support design and isolates the crane compartment from the rest of the side pack. Lifting stresses are transferred to the stabilizers and box-type subframe, not the compartment doors.

- Stainless steel billet style hinge has hidden fasteners and a rugged 5/16" stainless steel rod. All combined to stand up to years of heavy use.

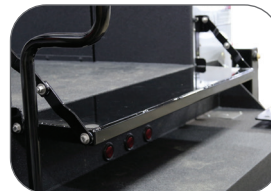
- For reduced truck weight and added corrosion protection, the doors are made of 5000 series aluminum and feature a two-panel design with a mechanically and chemically bonded internal hat channel to offer ultimate strength and greater resistance to bending.



Complete undercoating, with minimum of 3 mils of petroleum base material, provides extra protection from corrosion and road debris.



Side pack tops utilize the Stellar exclusive extruded aluminum top. It has two accessory mounting rails to eliminate drilling and makes mounting and relocating accessories easy and secure.



1/8 inch aluminum double panel tailgate with hinged arm brackets to provide a stout working surface.



Heavy-duty aluminum drawer system. Rated to hold up to the rigors of heavy-duty use. 500 lb capacity drawer slides and hardware, carry a full lifetime warranty.

The TMAX™ 30K Aluminum body is designed structurally similar to its steel counterpart however is approximately 100-pounds lighter and features aluminum side packs for increased corrosion resistance. The TMAX 30K Aluminum will accept a 35,000 foot-pound rated service crane or smaller (The Stellar® 6521 crane or smaller) and will serve the same markets as its steel version. The Aluminum Series features the Stellar® Torq-Isolator torsion box understructure and crane compartment, isolating the lifting force of the crane into the chassis frame and stabilizers, avoiding putting strain on the storage compartments. The side packs of the body are constructed with 5000 series aluminum, and use double-panel aluminum doors with a bonded internal hat channel for ultimate strength while reducing overall weight. A unique feature of the Aluminum Series bodies are the Stellar exclusive extruded aluminum side pack tops, that are equipped with two accessory mounting rails to eliminate drilling and make mounting and relocating of accessories easy and secure.

General Body Specs

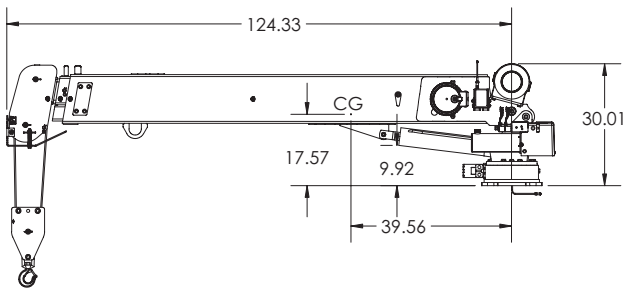
Model	GVWR	Cab to Axle	Length	Height	Compartment Depth	Floor Width
TMAX™ 30K	14,000 - 19,500	60" - 84"	9' to 11'	44" w/60" CS1V	22"	50"
TMAX™ 30K Aluminum	14,000 - 19,500	60" - 84"	9' to 11'	44" or 52"	22"	50"

Available Cranes

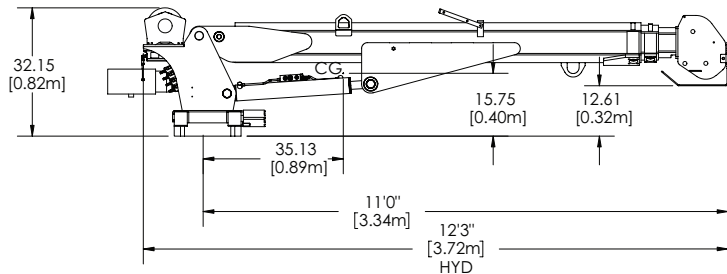
Model	Crane Rating	Boom Length*	Max Reach*	Lifting Capacities	Power Supply
EC3200	11,500 ft-lbs (1.59 ton-m)	7' (2.13 m)	15' (4.57 m)	3,200 lbs @ 3' (1,451 Kg @ .9 m) 640 lbs @ 15' (260 Kg @ 4.6 m)	12 volt power 2.0 gpm @ 2600 psi
EC4000 (16' option)	16,000 ft-lbs (2.21 tm)	8' (2.44 m)	16' (4.88 m)	4000 lbs @ 4' (1,814 Kg @ 1.22 m) 935 lbs @ 16' (420 Kg @ 4.88 m)	12 volt power 2.0 gpm @ 2300 psi
EC4000 (20' option)	16,000 ft-lbs (2.21 tm)	10' (3.05 m)	20' (6.10 m)	4000 lbs @ 4' (1,814 Kg @ 1.22 m) 800 lbs @ 20' (363 Kg @ 6.1 m)	12 volt power 2.0 gpm @ 2300 psi
EC5000	25,000 ft-lbs (3.46 tm)	10' (3.05 m)	20' (6.10 m)	5000 lbs @ 5' (2,268 Kg @ 1.5 m) 1250 lbs @ 20' (565 Kg @ 6.1 m)	12 volt power 2.0 gpm @ 2900 psi
3315	11,500 ft-lbs (1.59 ton-m)	7' (2.13 m)	15' (4.57 m)	3,200 lbs @ 3' 7" (1,451 Kg @ 1.1 m) 765 lbs @ 15' (345 Kg @ 4.6 m)	PTO 3.0 gpm @ 2600 psi 12 volt power E/H (Optional)
4421	16,000 ft-lbs (2.23 ton-m)	11' (3.35m)	21' (6.40 m)	4,000 lbs @ 4' (1,814 kg @ 1.22 m) 760 lbs @ 21' (345 kg @ 6.40 m)	PTO 3.0 gpm @ 2600 psi 12 volt power E/H (Optional)
5521	29,500 ft-lbs (4.1 ton-m)	11' (3.35 m)	21' (6.40 m)	5,000 lbs @ 5' 10" (2,268 kg @ 1.78 m) 1,400 lbs @ 21' (635 kg @ 6.40 m)	PTO 8 gpm @ 2500 psi
6521	35,000 ft-lbs (5.3 tm)	11' (3.35 m)	21' (6.40 m)	6,000 lbs @ 5' 10" (2,722 kg @ 1.78 m) 1,705 lbs @ 21' (770 kg @ 6.40 m)	PTO 8 gpm @ 2500 psi

CDT™ Equipped

EC5000 Telescopic Crane Dimensions



5521 Telescopic Crane Dimensions



NOTE: All Stellar cranes meet ANSI B30.5 and OSHA 1910.180 specifications. Specifications subject to change without notification.

Your local distributor:



Our People. Our Products.

190 State Street
P.O. Box 169
Garner, IA 50438
Telephone: (641) 923-3741 • (800) 321-3741
Fax: (641) 923-2812
Internet: www.stellarindustries.com
Email: sales@stellarindustries.com

An Employee Owned Company.
Copyright © 2018 Stellar Industries, Inc.