

**SHARP** constantly strives to make it's Electronic Cash Registers easy to use to increase speed of service /This is Why the new range of machines include a large multi-line operator display to help reduce any potential mistakes.



**SHARP** is pleased to launch 3 new additional models to its best-selling range of Electronic Cash Registers  
 /This is Why we are the ideal partner for any retail or hospitality business.



**XE-A207W / XE-A207B**

- Large Multi-line operator display
- Full size keyboard with 53 raised keys
- 1 station fast and silent printing
- SD card slot for data back-up
- Data export to PC via SD card

**XE-A217W / XE-A217B**

- Large Multi-line operator display
- Spill-proof full size keyboard with 119 flat keys
- 1 station fast and silent printing
- SD card slot for data back-up
- Data export to PC via SD card



**XE-A307**

- Large Multi-line operator display
- Full size keyboard with 58 raised keys
- 2 station fast and silent printing
- SD card slot for data back-up
- Data export to PC via SD card
- Support for Barcode Scanning
- Easy programming

# /XE-A207W AND XE-A207B

A new addition to the best-selling Sharp Electronic Cash Register range for 2011, the XE-A207 features a class leading large multi-line operator display and is ideal for retailers who need a professional, reliable and easy to use machine.

Featuring a new contemporary cabinet design, the XE-A207 series comes in a choice of light grey or black and will fit in with most hospitality and retail interiors.

For easy set-up, a free PC Link software programme allows for effortless product maintenance and a new data export function allows for sales data to be saved for use within any spreadsheet.

A sturdy metal full sized lockable cash drawer is included with the XEA207 which is perfect for busy outlets which have up to 600 customers a day.

With even more features, the XE-A207 is the ideal machine for any growing retail outlet

## At a glance

- Contemporary and stylish design
- Multi-line LCD operator display
- High speed quiet single station thermal printer - 12 lines / sec
- Pop-up and swivel customer display creates a good impression
- Full size keyboard with 53 responsive raised keys
- 99 departments max
- Full Audit Trail - 9,000 line electronic journal
- 2,000 PLU / items
- Flexible enough to support 25 clerks.
- Graphic logo printing
- Currency conversion
- Be safe - Lockable full size sturdy metal Cash drawer with 5 note and 8 coin compartments
- Save time by automating routine tasks - 1 Auto menu for 5 Auto keys
- SD Card slot for data back-up and peace of mind
- Export sales data for use within a spreadsheet for convenience
- Free PC Programming tool included.
- Available in light grey or black



XE-A207 WHITE



LARGE AND BRIGHT TILTABLE 4/8  
LINE OPERATOR DISPLAY

# /XE-A217W AND XE-A217B.

A new addition to the best-selling Sharp Electronic Cash Register range for 2011, the XE-A217 features a class leading large multi-line operator display and is ideal for hospitality owners who need a professional, reliable and easy to use machine.

Featuring a new contemporary cabinet design, the XE-A217 series comes in a choice of light grey or black and will fit in with most hospitality interiors.

A key feature for a hospitality outlet is the spill-resistant silicone rubber keyboard offering 119 keys.

For easy set-up, a free PC Link software programme allows for effortless product maintenance and a new data export function allows for sales data to be saved for use within any spreadsheet.

The Sharp XE-A217 is the perfect partner for any hospitality business.

## At a glance

- Contemporary and stylish design
- Multi-line LCD operator display
- High speed quiet single station thermal printer - 12 lines / sec
- Pop-up and swivel customer display creates a good impression
- Full size flat spill-resistant keyboard with 119 flat keys
- 99 departments max
- Full Audit Trail - 9,000 line electronic journal
- 2,000 PLU / items
- Flexible enough to support 25 clerks.
- Graphic logo printing
- Currency conversion
- Be safe - Lockable full size sturdy metal Cash drawer with 5 note and 8 coin compartments
- Save time by automating routine tasks - 1 Auto menu for 5 Auto keys
- SD Card slot for data back-up and peace of mind
- Export sales data for use within a spreadsheet for convenience
- Free PC Programming tool included.
- Available in light grey or black



XE-A217 BLACK



FULL SIZE LOCKABLE METAL CASH DRAWER WITH 8 COIN and 5 BILL COMPARTMENTS

# /XE-A307

As the highest specification machine in the new Sharp 2011 range, the XE-A307 features a class leading large multi-line operator display and is ideal for retailers who need a professional, reliable and easy to use machine.

One of the key benefits of the XE-A307 is the built-in support for barcode scanning to allow for fast customer service.

For a full audit trail, a fast twin station printer is included as well as a 9,000 line Electronic Journal.

For easy set-up, a free PC Link software programme allows for effortless product maintenance and via the SD card a data export function allows for sales data to be saved for use within any spreadsheet.

## At a glance

- Contemporary and stylish design
- Multi-line LCD operator display
- High speed quiet twin station thermal printer - 15 lines / sec
- Built-in Barcode scanning support
- Pop-up and swivel customer display creates a good impression
- Full size keyboard with 57 responsive raised keys
- 99 departments max
- Full Audit Trail - 9,000 line electronic journal
- 10,000 PLU / items
- Flexible enough to support 25 clerks.
- Graphic logo printing
- Currency conversion
- Be safe - Lockable full size sturdy metal Cash drawer with 5 note and 8 coin compartments
- Save time by automating routine tasks - 1 Auto menu for 5 Auto keys
- SD Card slot for data back-up and peace of mind
- Free PC Programming tool included.
- Export sales data for use within a spreadsheet for convenience
- Available in light grey or black



XE-A307 WHITE





# /PC PROGRAMMING TOOL

The free PC Programming tool allows for the preset data on the Electronic Cash Register to be edited and saved and is an essential resource for any retail or hospitality user.

Utilising the built-in SD card slot, no extra cabling is required as the data which is stored on the SD card will be read by the PC Programming tool.

To ensure that professional receipts are given to customers, the PC Programming tool has a useful graphic logo function which allows for images to be printed on the receipt.

The PC Programming tool saves time and helps to minimise any costly mistakes as data can be viewed on a PC screen prior to uploading to the Electronic Cash Register.

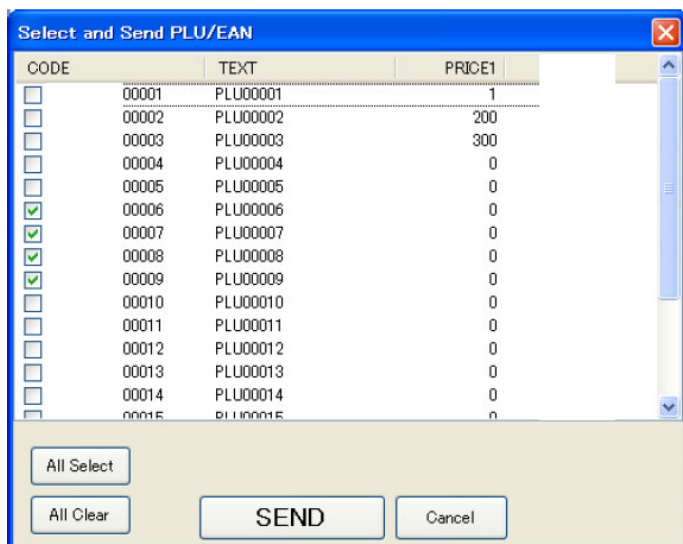
With so much functionality in a free and easy to use software package, the Sharp PC Programming tool is an indispensable tool for any retail or hospitality user.

## At a glance:

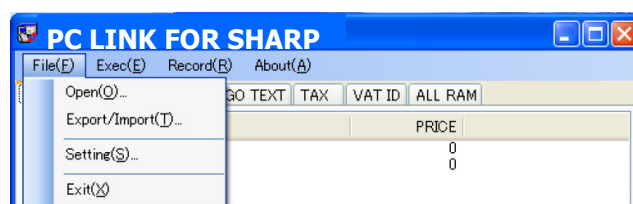
- Full maintenance of
  - PLU
  - EAN (on XE-A307)
  - Departments
  - Graphical Logos
  - Receipt Logo text
  - Tax/Vat rates
  - VAT ID
- Peace of mind as data can be backed-up and restored using the PC Programming tool.
- No cabling required as the SD card is utilised
- Save time as multiple items can be programmed on a PC and sent to the Electronic Cash Register
- New PLUs can be created from within the PC tool or unwanted PLUs can be deleted.

## System Requirements

- Windows XP Professional SP3 (32-bit edition)
- Windows Vista Ultimate SP1 (32 bit / 64 bit edition)
- Windows 7 Ultimate (32 bit / 64 bit edition)
- .NET framework 3.5 of higher run-time environment is required.



EASY TO USE WHEN MULTIPLE PLUs NEED UPLOADING



DATA IS EASY TO IMPORT OR EXPORT

# /FEATURES

**XE-A207W  
XE-A207B**

**XE-A217W  
XE-A217B**

**XE-A307**

Type	Alpha-numeric	Alpha-numeric	Alpha-numeric
Departments	99	99	99
Items (PLU)	<b>2,000</b>	<b>2,000</b>	<b>10,000</b>
Tables (GLU)	-	50	-
Receipts per day	600+	600+	800+
Tax rates	4	4	4
Number of Cashiers	25	25	25
Electronic Journal	<b>9,000 lines</b>	<b>9,000 lines</b>	<b>9,000 lines</b>
Logo text print	TEXT	TEXT	TEXT
Graphic Logo	YES	YES	YES
Help function	<b>YES</b>	<b>YES</b>	<b>YES</b>
SD Card Slot	<b>YES</b>	<b>YES</b>	<b>YES</b>
PLU Code Entry	5	5	<b>13</b>
Scanning	-	-	<b>YES</b>

## KEYBOARD Features

Type	Raised	Flat Keys	Raised Keys
Number of Keys	52	119	58

## PRINTER Features

Printing speed (lines per second)	12	12	12
Easy 'drop-in' loading	YES	YES	YES
Number of printers	1	1	2
Receipt Paper Width	58mm	58mm	58mm
Paper roll. Max diameter	80mm	80mm	80mm
Number of characters	<b>30</b>	<b>30</b>	<b>30</b>
Currency symbol	£ / € / \$ (Default is *)	£ / € / \$ (Default is *)	£ / € / \$ (Default is *)
Operator Display - No. of lines	<b>4/8</b>	<b>4/8</b>	<b>4/8</b>
Display Type	<b>LCD Backlit Alpha-numeric</b>	<b>LCD Backlit Alpha-numeric</b>	<b>LCD Backlit Alpha-numeric</b>

## CASH DRAWER Features

Number of Note compartments	5	5	5
Number of Coin compartments	8	8	8
Integrated Lock	YES	YES	YES

## DIMENSIONS & WEIGHT

Height (mm)	237	237	237
Length (mm)	355	355	355
Width (mm)	420	420	420
Weight (kg)	11.0	11.0	11.5

**SHARP**<sup>®</sup>  
/This is Why