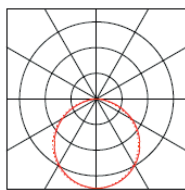
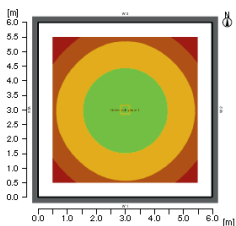


Interior Lighting

Brighton S LED Bay Light



Luminous Intensity (example)



Typical output 120W
120° beam angle
419lx max 252lx average
5000K cool white
Luminaire height 4m

Ordering

BRIS-BH-DF-IJ

Where

B	Body configuration	HB or LB
H	Diffuser	AD = acrylic, PD = polycarbonate
D	Wattage	60, 90, 120, 150
E	Colour temp	CW
F	Beam angle	B120, B50, B40, B20, BA (aisle)
I	Dimming options	D1 = 1-10, D2 = DALI
J	Sensor options	M = microwave, preset = Mxx, DD = daylight dimming

Example

BRIS-LBAD-120CWB120

120 watt cool white low bay with 120 deg beam angle, acrylic diffuser
Photometric files are available upon request.

BRIGHTON S is best for...

Warehouses, (aisles) factories and workshops
Supermarkets and other retail premises
Freezer rooms and cold stores
Gyms
Museums

Not sure the BRIGHTON is right for your building? Give us a call to discuss your requirements.



UK Manufacture
5 YEAR WARRANTY

BRIGHTON S - for industrial environments where performance matters

The Brighton S may be configured as a low bay or high bay, depending on the mounting height. Let us know the application height and we will fit the appropriate reflectors. For aisle and rack use we use a 20° reflector combined with optional tilt for ultimate uniformity.

The Brighton S is a highly efficient lighting unit, reducing energy costs and helping you to achieve your carbon reduction targets. And, with a design life of over 50,000 hours, you'll save on maintenance costs too – particularly if lighting is located in hard-to-reach areas high above the ground.

For increased protection in high ambient temperatures our luminaires have active thermal control.

Good to know – the Brighton uses an Earlsmann 30 W "LumEngine" which includes the latest CREE LED technology, providing unrivalled efficiency and value for money.

Benefit from...

Low power consumption - **Reduced energy bills, reduced CO₂**
Minimal maintenance - **Lower running costs**
Minimal heat production - **Savings in air-con maintenance costs**
Instant start, full brightness at turn on - **Improved safety**
Active thermal protection - **Increased reliability**

Specifications

Colour Temperature	CW 5000K (nominal)
Colour Rendering Index	70Ra
Sealing	IP40
Voltage	180-305Vac 50/60Hz
Markings	CE, RoHS
Efficacy	up to 100lm/W (system)
LED	CREE 2530 array
LED life $T_c=85^\circ\text{C}$	LM80/TM21 (6k) L90>36000hrs *
Ambient temp T_a	-25°C / + 40° **
Driver	>92% efficiency at full power
Power factor	>0.98 (full power)
Diffuser	Acrylic (standard)
Body	Powder coated steel and acrylic
Colour	White
Dimensions	350 x 350 x 200
Weight	up to 10kg depending on model

* Please call us to discuss LM80/TM21 testing

** Ambient temperature may exceed 50° at ceiling level. Please discuss when ordering. Earlsmann has developed a low noise/power cooling module for sustained operation at high temperatures.

Options

Configuration	High bay: HB, Low bay: LB
Diffuser	Polycarbonate PD
Beam angle	Can be focussed for special requirements
Sensor	Microwave, preset, daylight dimming
Dimming	1-10 or DALI
Colour rendering	Up to 90Ra

Output

Power (LED)	Total W	Output (lm) CW
60	68	7000
90	105	10500
120	135	14000
150**	170	17500

Earlsmann reserve the right to change the specification without notice

Rev 010614