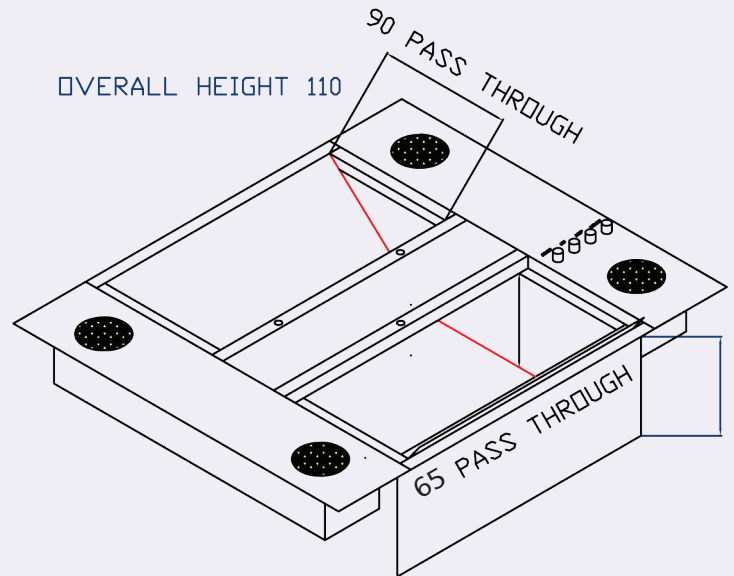
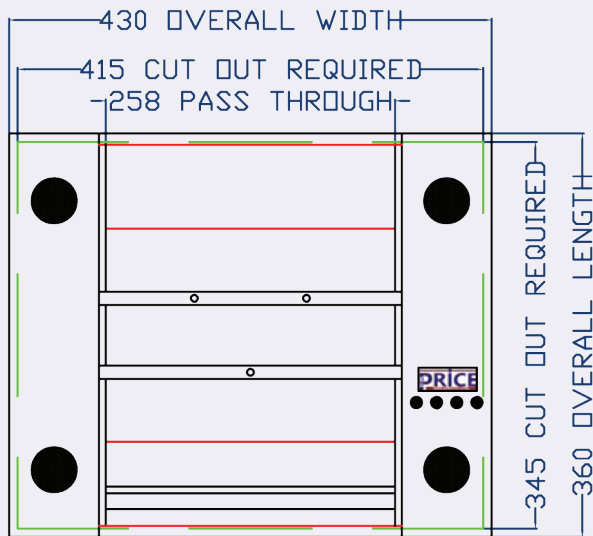


TECHNICAL SPECIFICATION: TYPE DT4A - 75mm AUDIO CASH TRAY



DESCRIPTION:

STANDARD TYPE DT4A AUDIO DOCUMENT
PASSING TRAY

FINISH:

SCOOP - BRUSHED STAINLESS STEEL

ANGLE SIDES - BLACK POWDER COATED

SLIDING TOP - CLEAR POLYCARBONATE WITH
STAINLESS STEEL PULL ANGLE

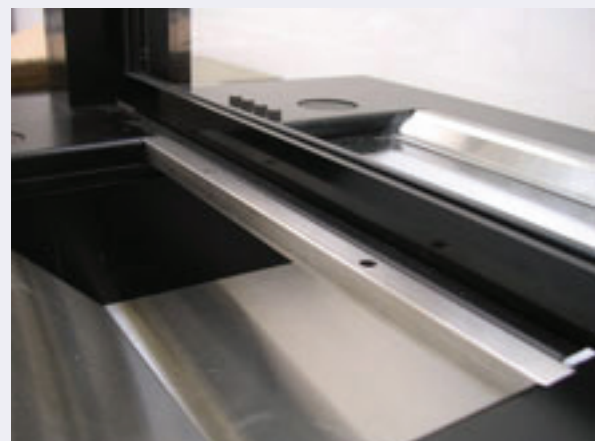
AUDIO CONTROLS - POWER ON/OFF, CLERK
MUTE, INDUCTION TEST AND VOLUME BOOST

OVERALL SIZE - 430 x 360 x 110mm

TRAY WIDTH - 258mm

TRAY DEPTH - 75mm

CUT OUT REQUIRED - 415 x 345 x 115mm



OPTIONS:

BULLET RESISTANT SHOT BOX

NON STANDARD SIZES

NOT SUITABLE FOR EXTERNAL APPLICATIONS