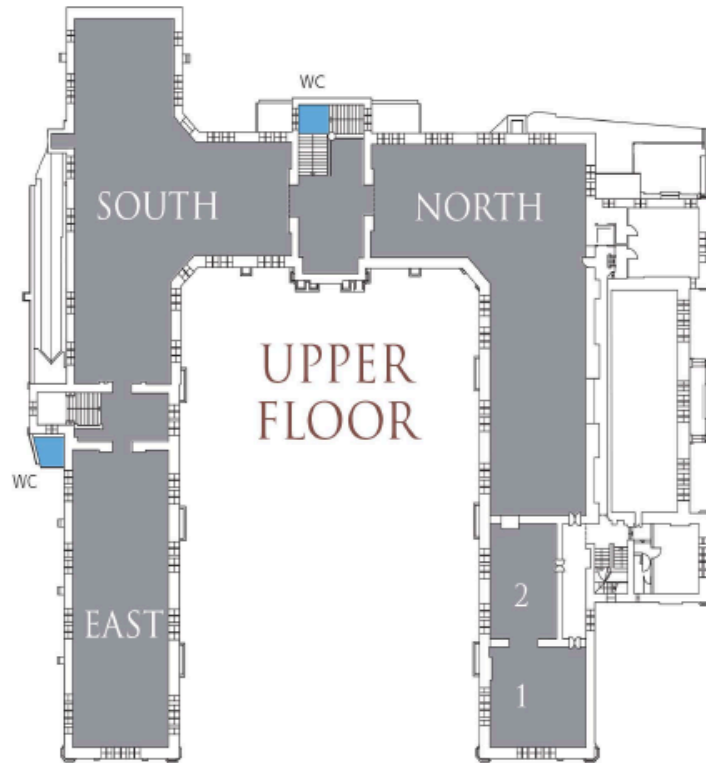


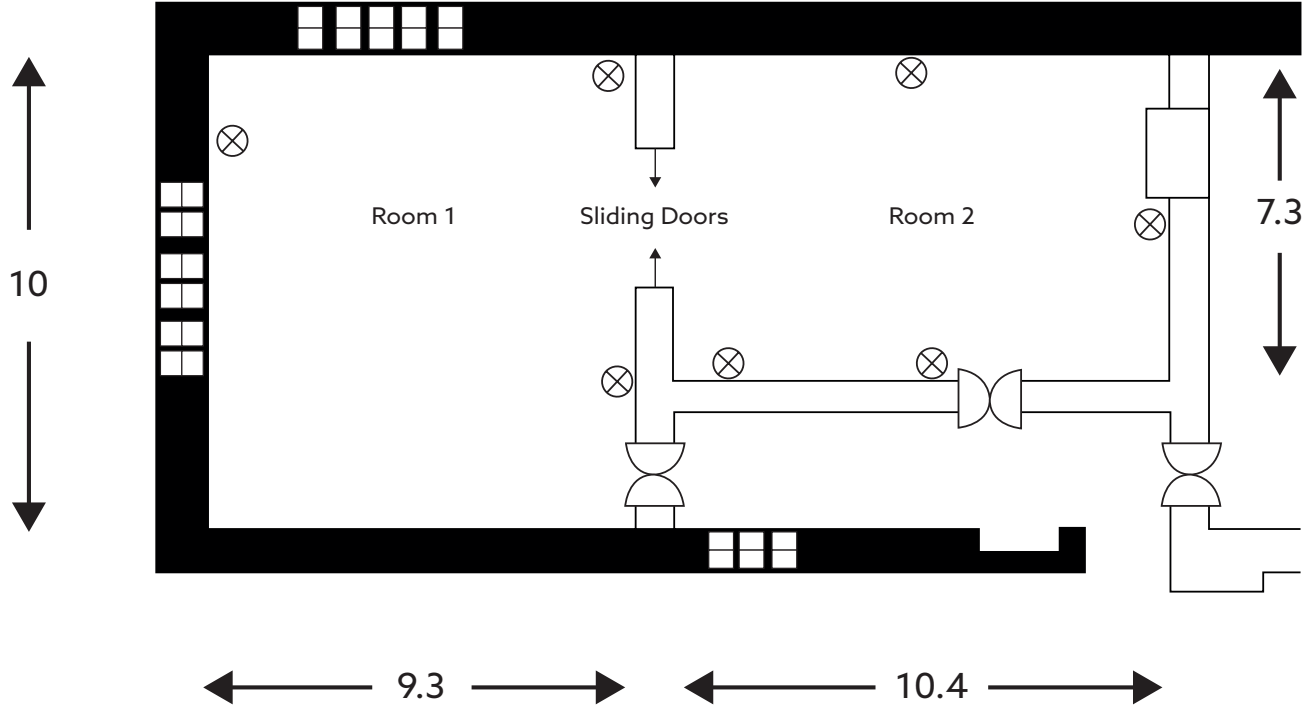
OUEV Floorplans

- A. Examination Schools
- B. Sheldonian Theatre
- C. St Luke's Chapel
- D. Osler House

Examination Schools Floorplans

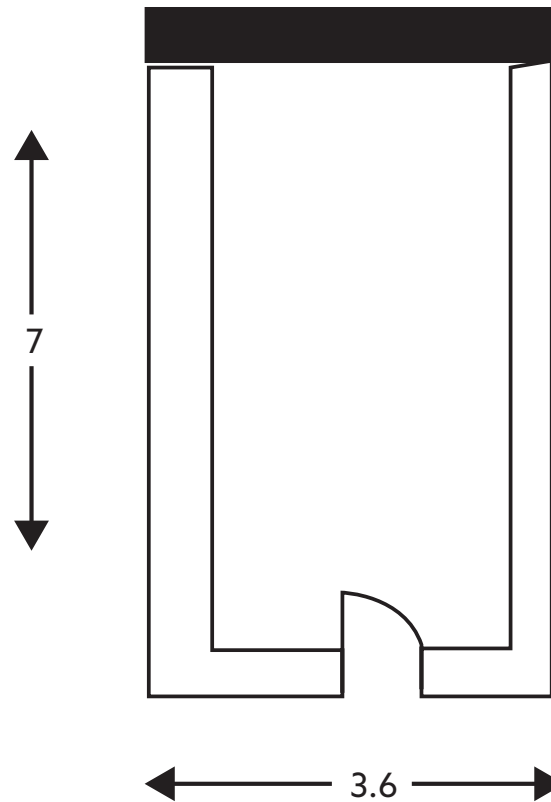


Room 1&2

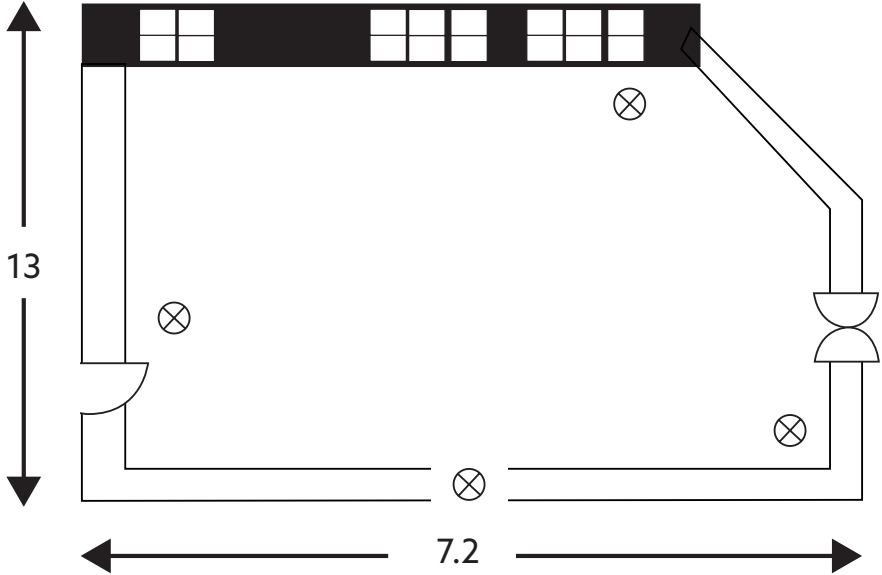


⊗ 13 amp twin socket

Room 5A

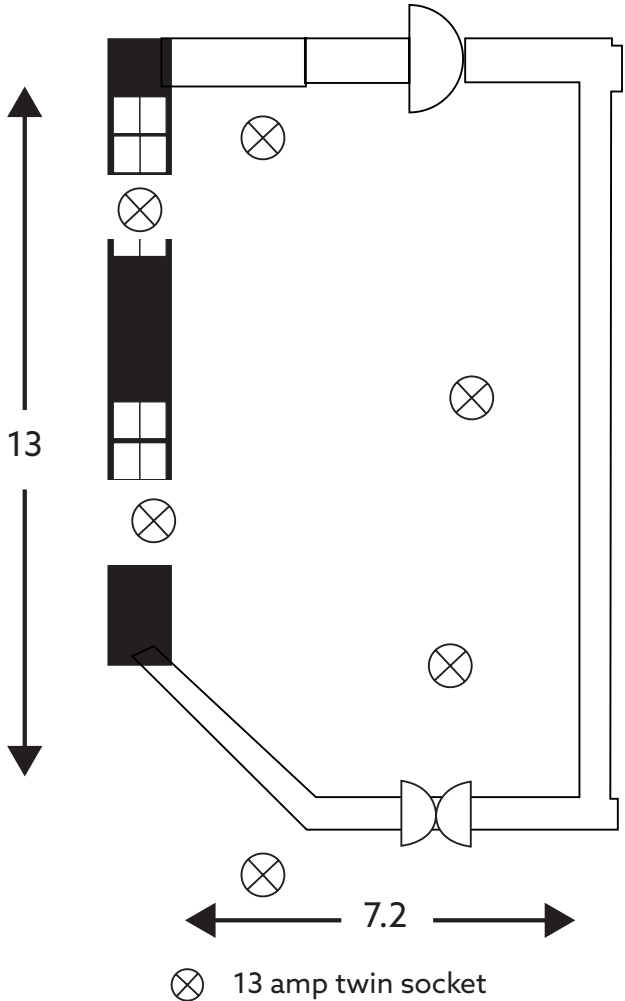


Room 6

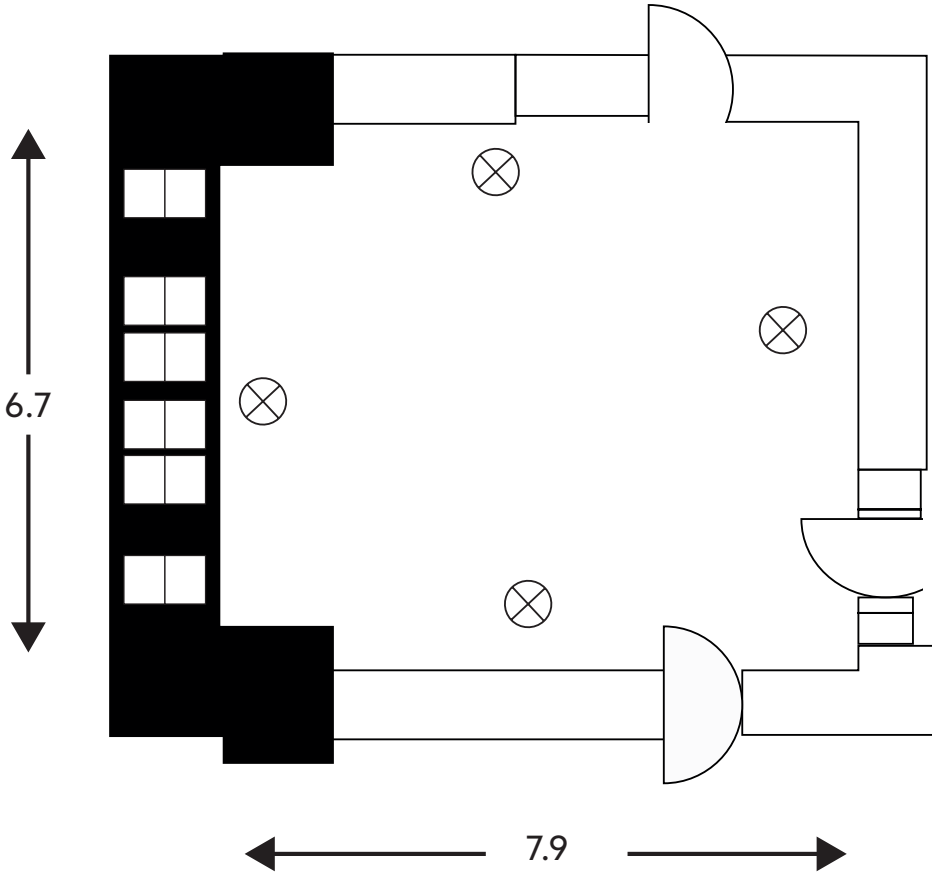


⊗ 13 amp twin socket

Room 7

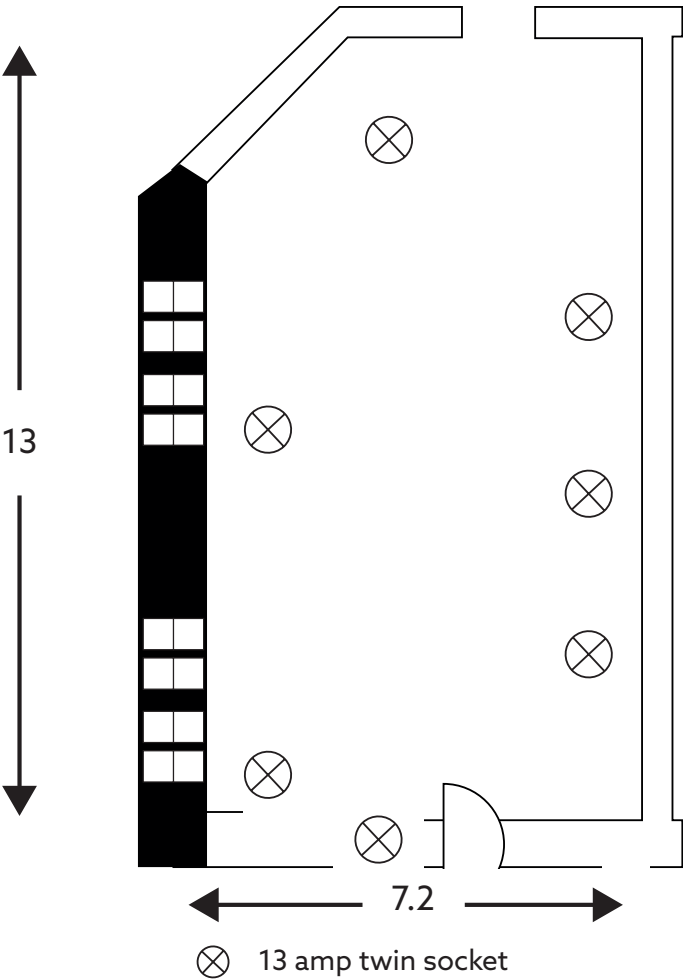


Room 8

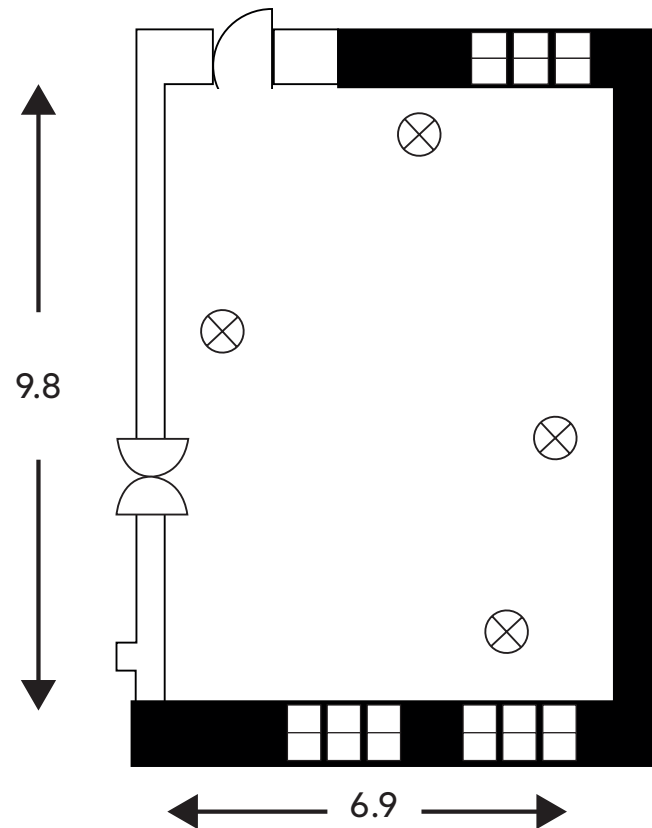


⊗ 13 amp twin socket

Room 9

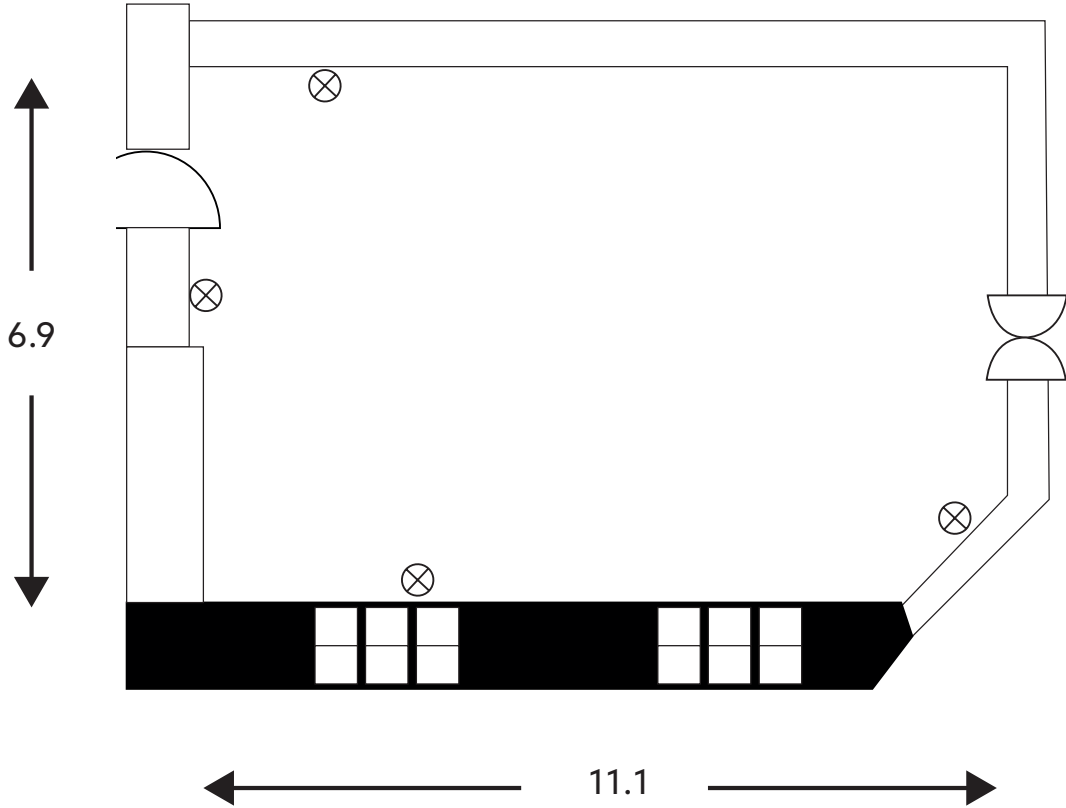


Room 10



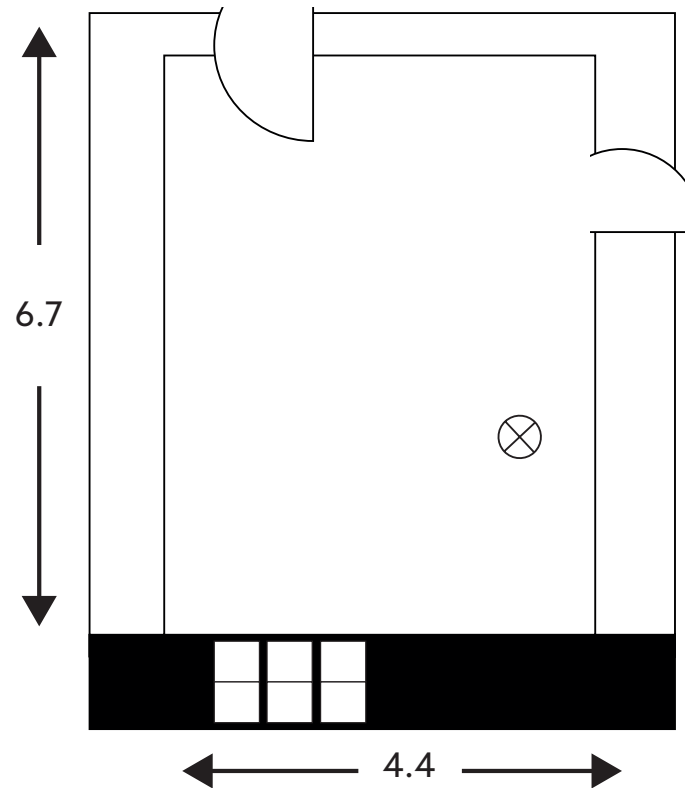
⊗ 13 amp twin socket

Room 11



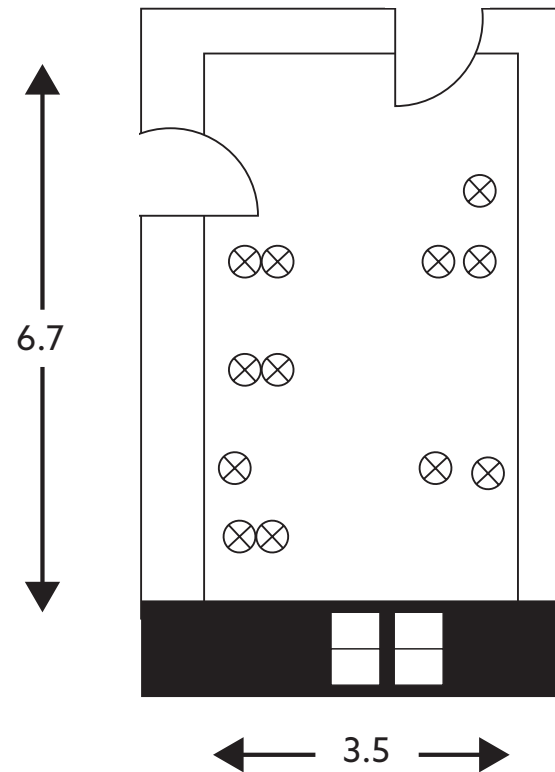
⊗ 13 amp twin socket

Room 12



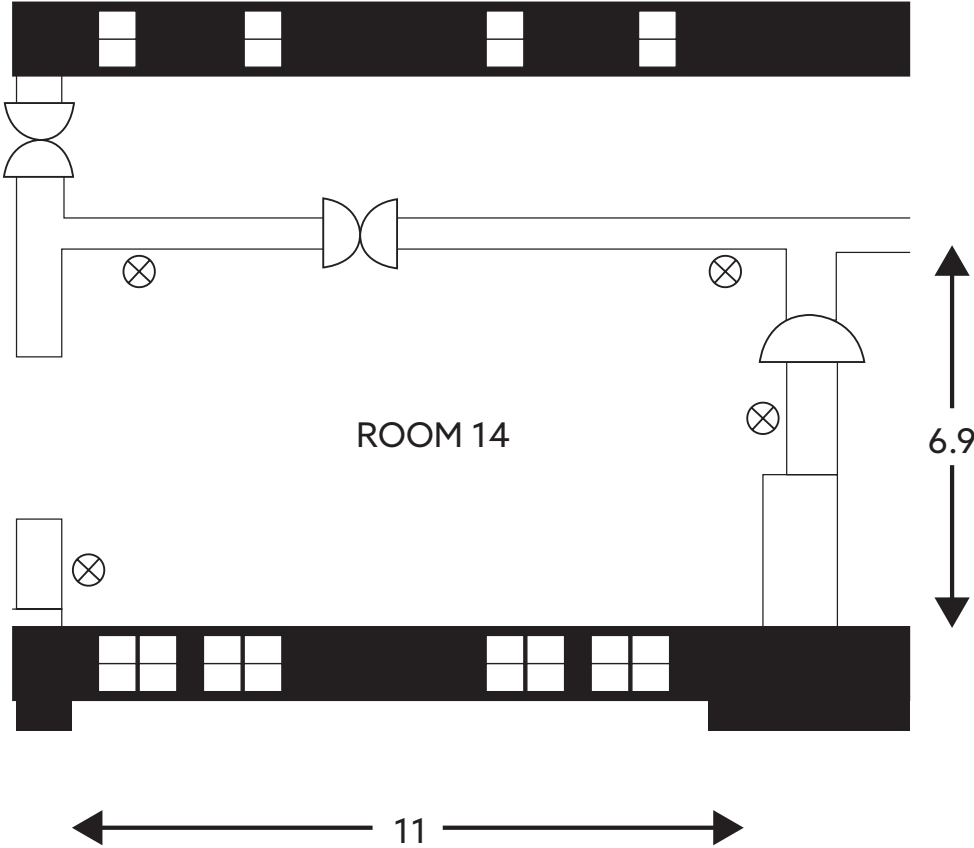
⊗ 13 amp twin socket

Room 13



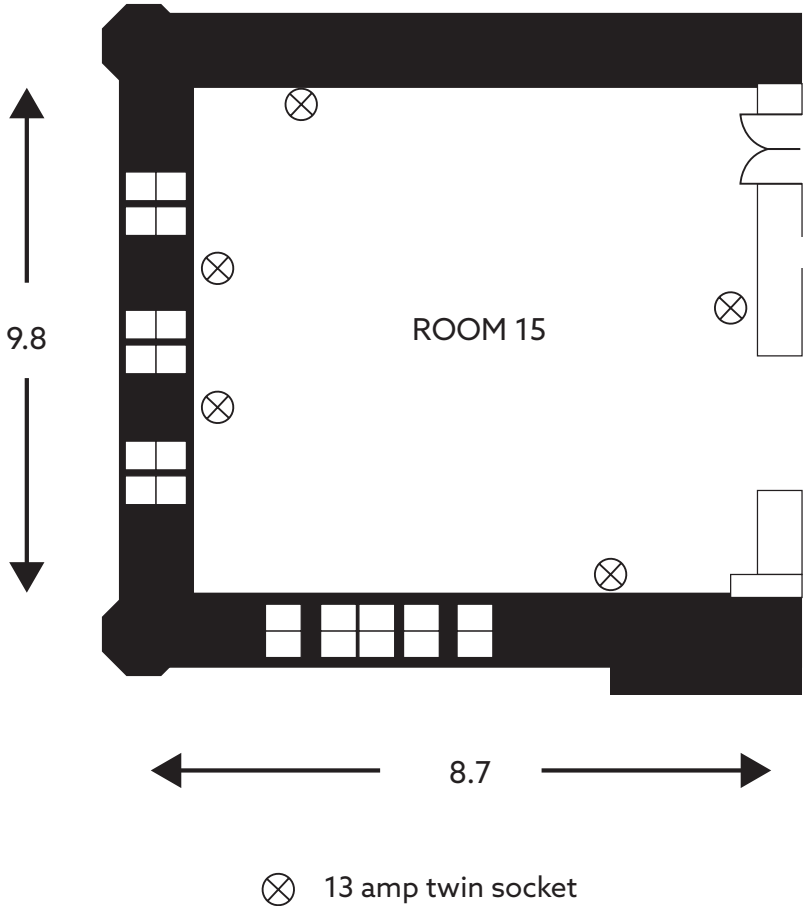
⊗ 13 amp twin socket

Room 14

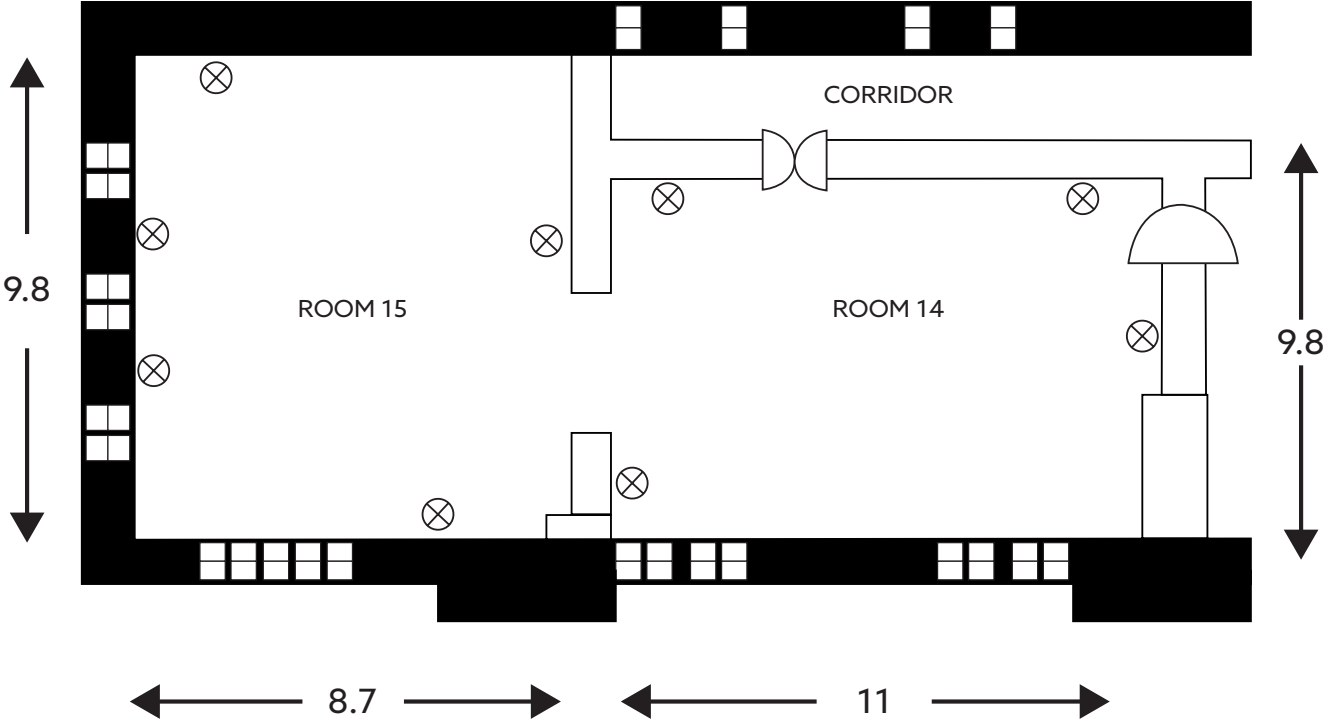


⊗ 13 amp twin socket

Room 15

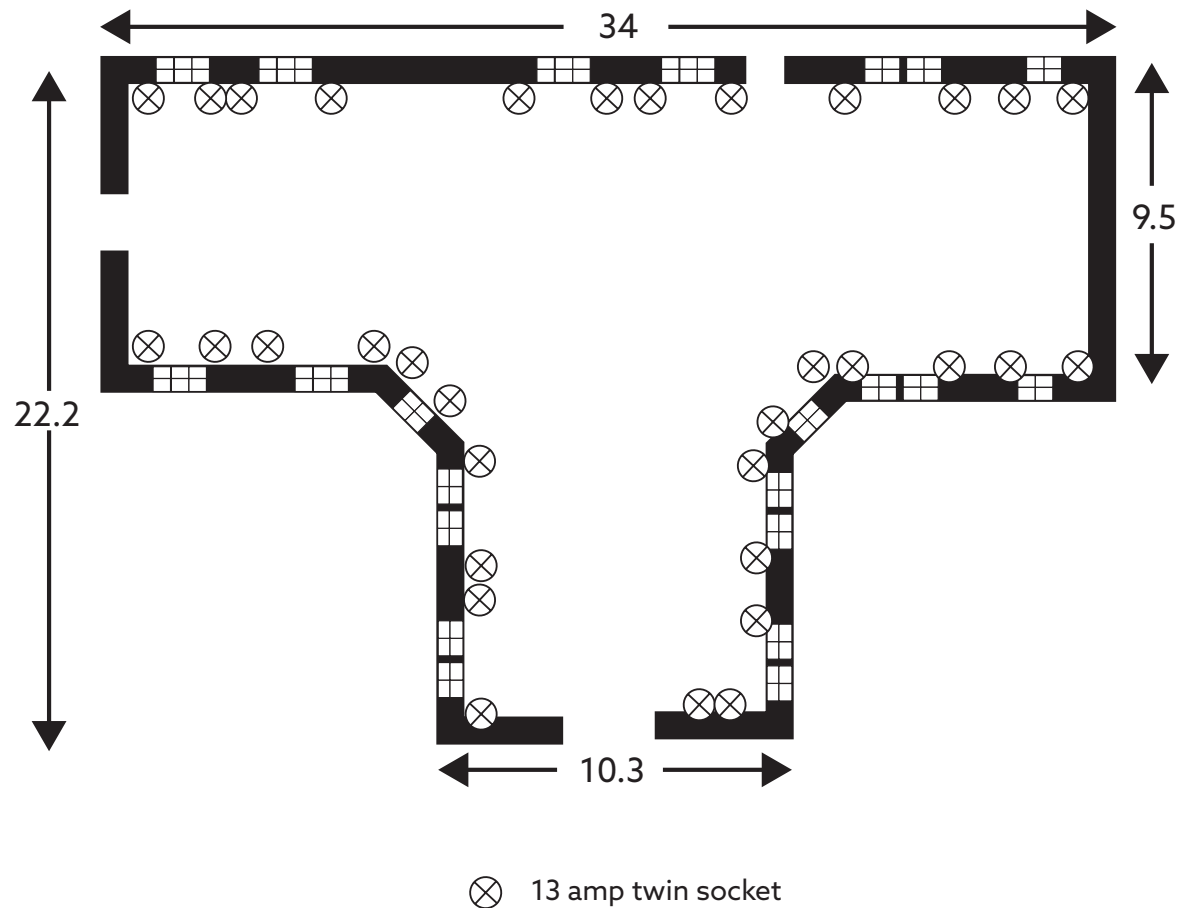


Room 14 & 15

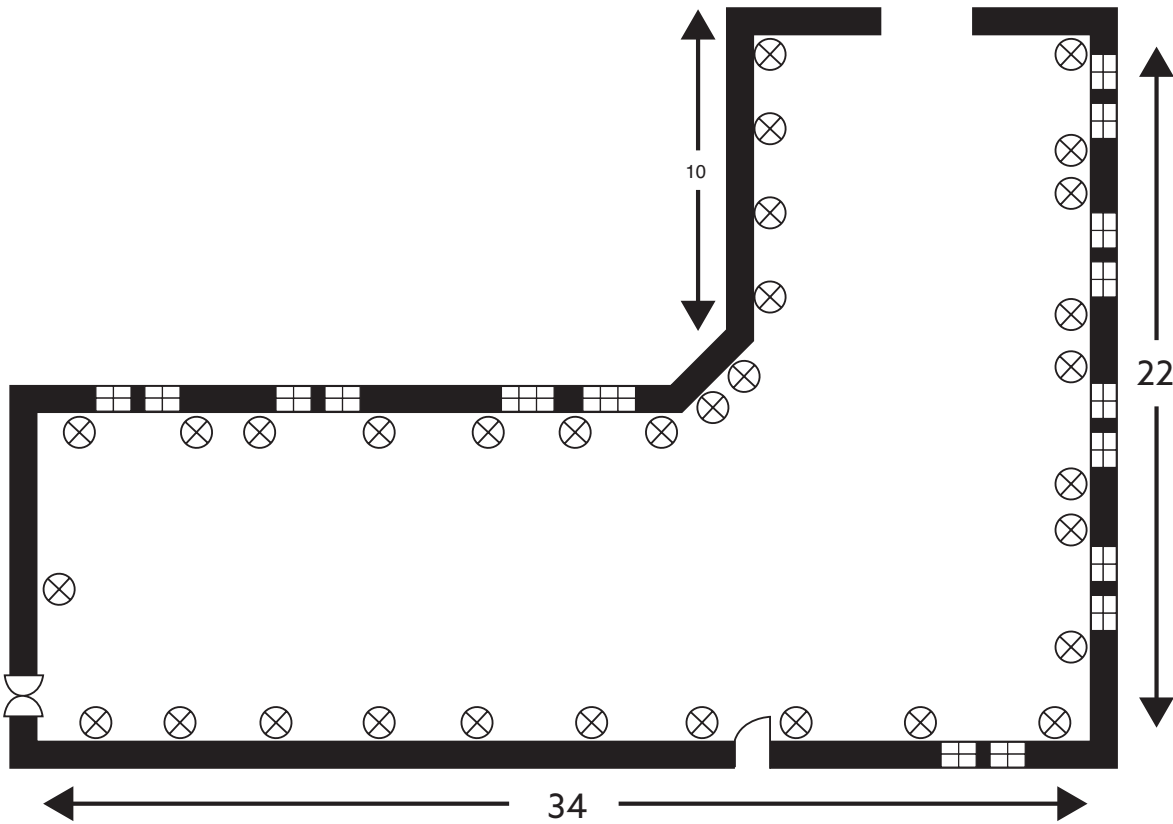


⊗ 13 amp twin socket

Room – South Writing School

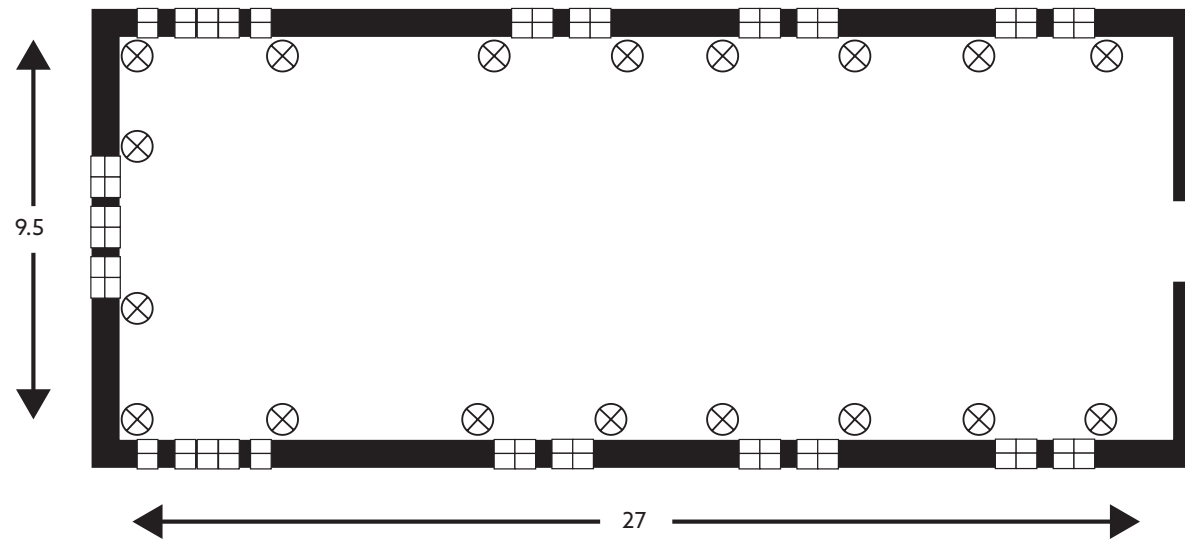


Room - North Writing School



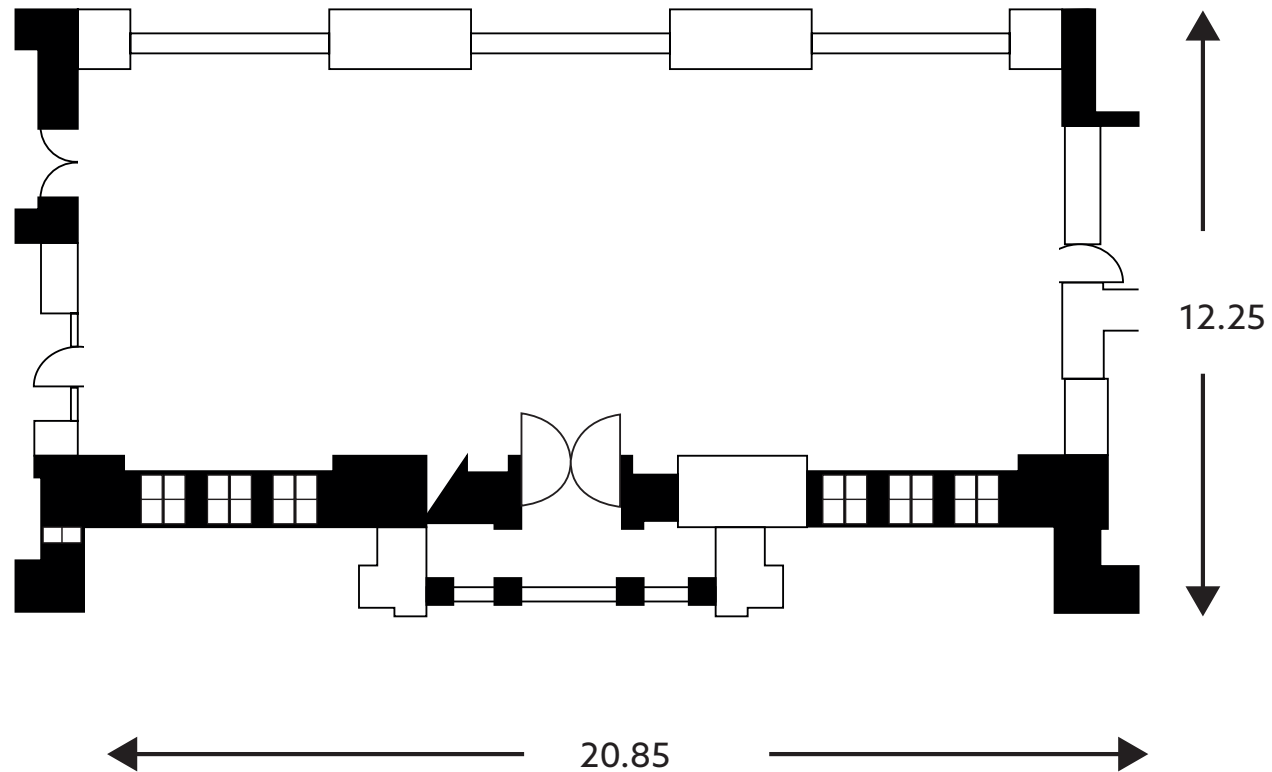
⊗ 13 amp twin socket

Room - East Writing School

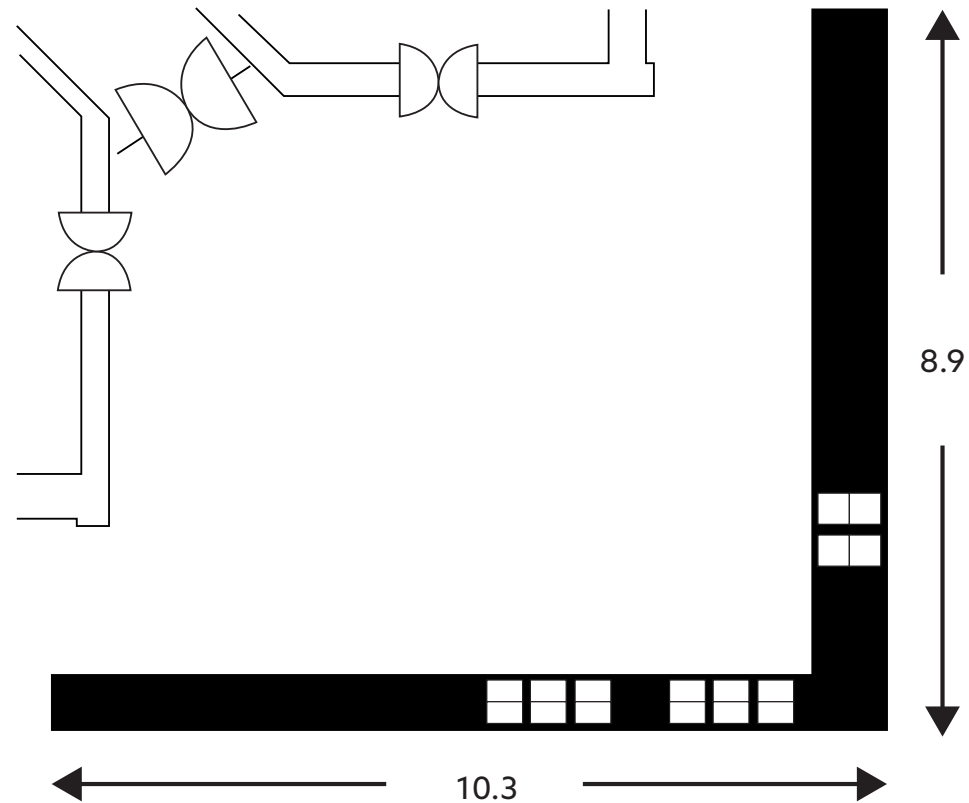


⊗ 13 amp twin socket

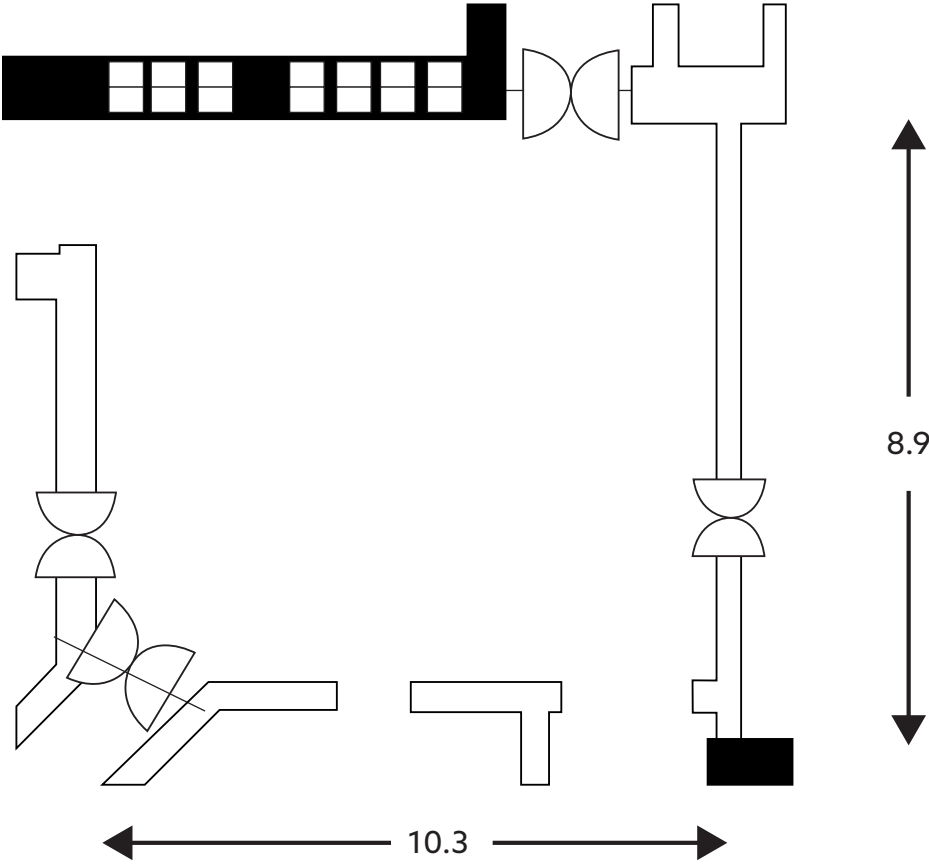
Room - Great Hall



Room – First square

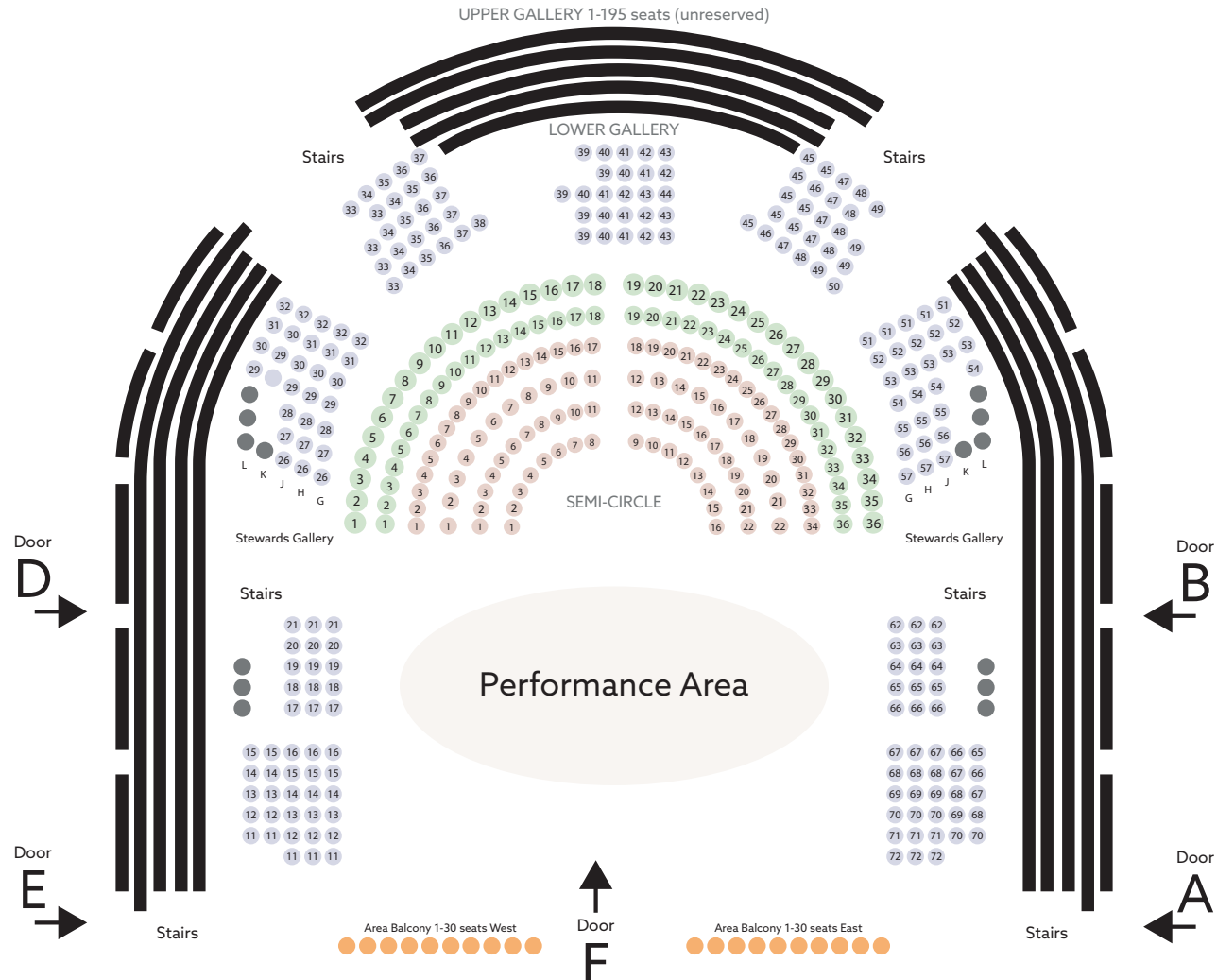


Room - Second square



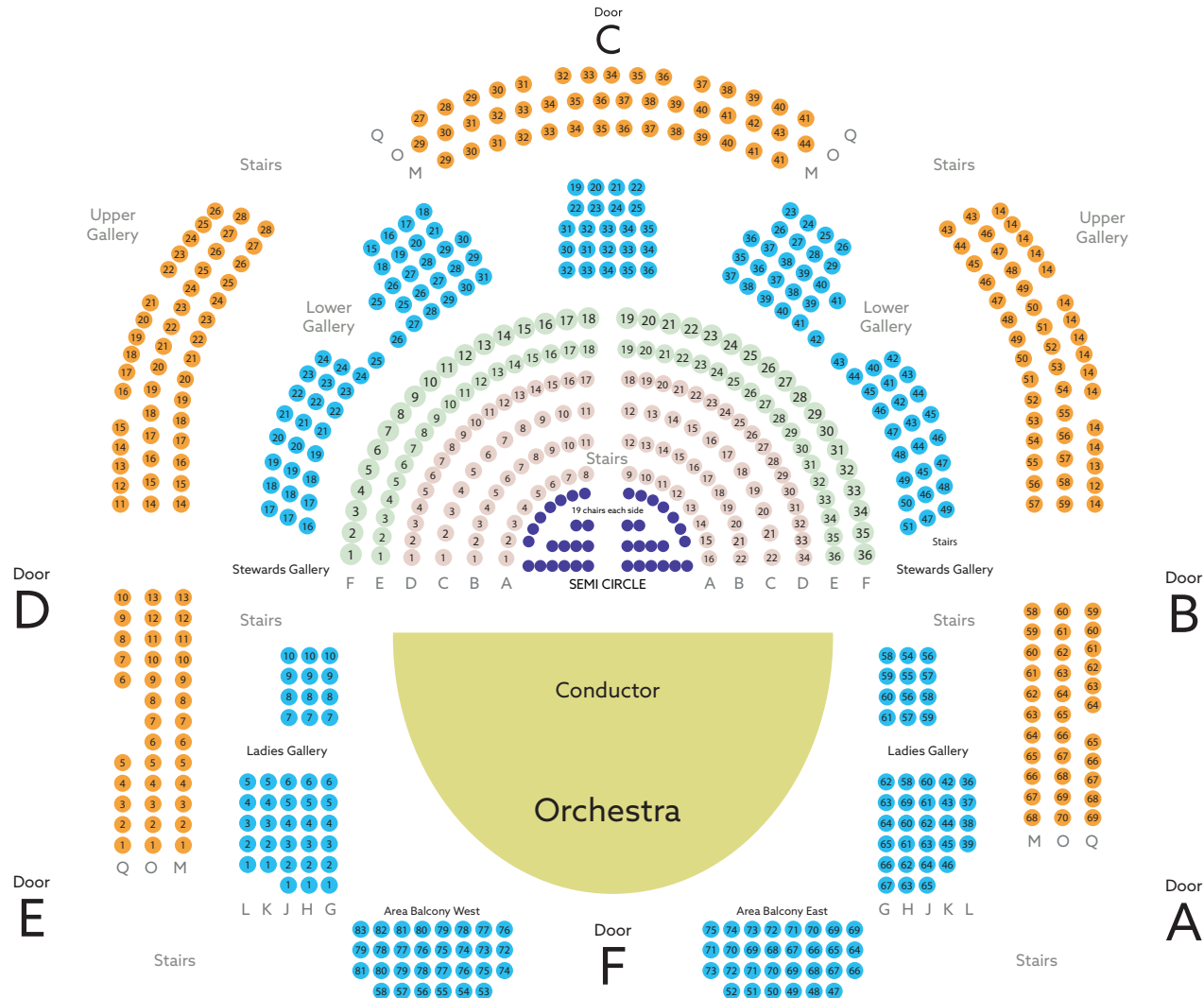
Sheldonian Floorplans (dimensions in meters)

Main Theatre



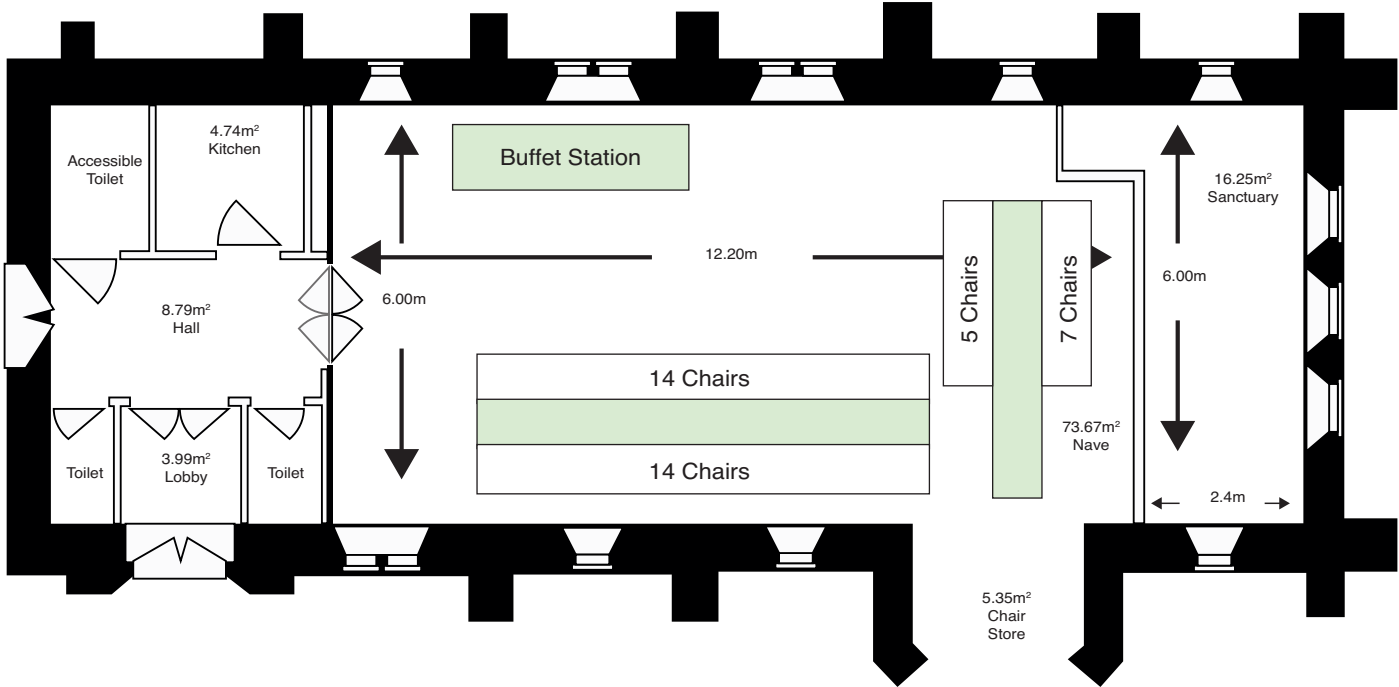
Sheldonian Floorplans (dimensions in meters)

Main theatre – concert – x 713



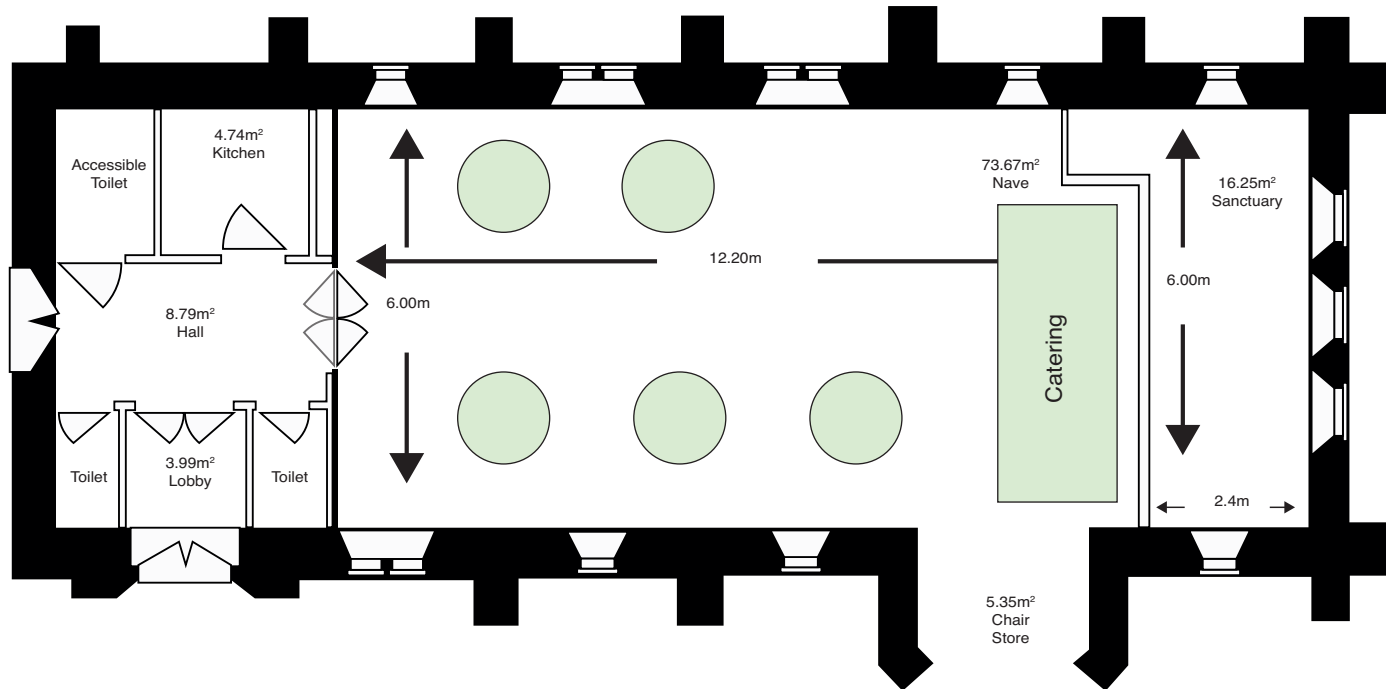
St Luke's Chapel Floorplans (dimensions in meters)

Main room - banquet trestles -x40



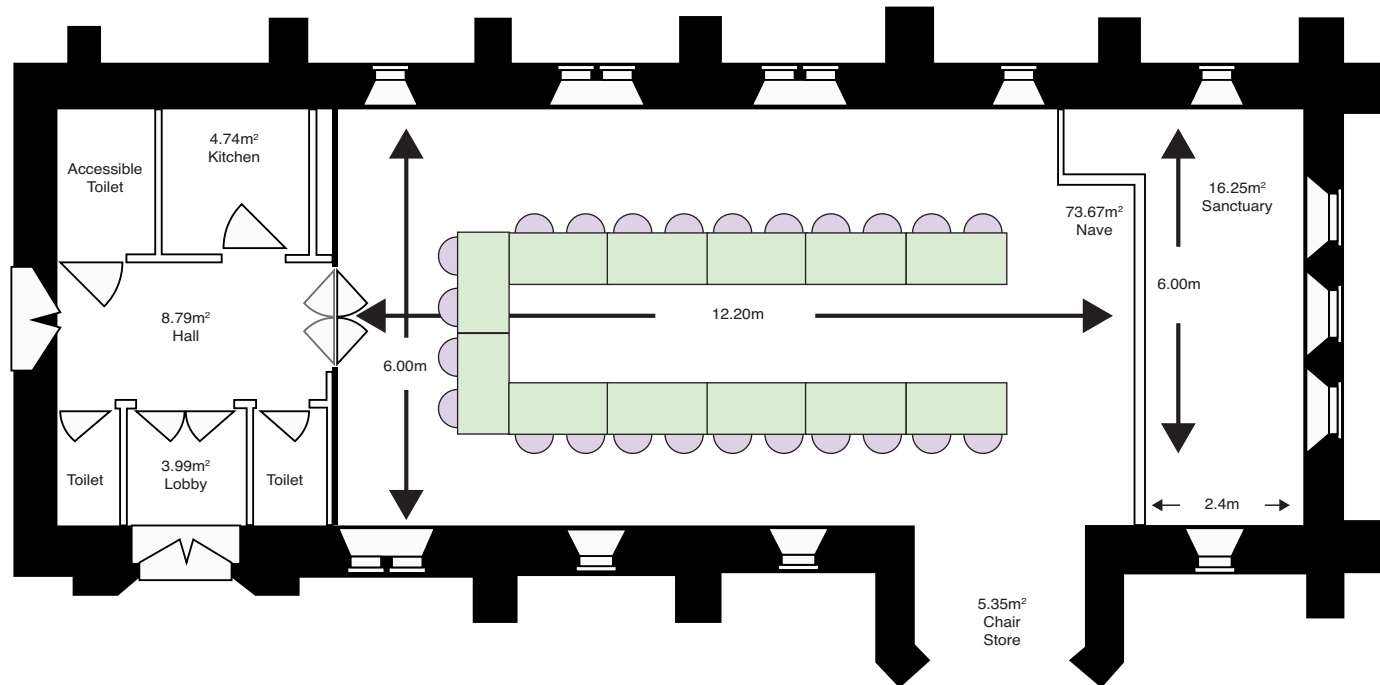
St Luke's Chapel Floorplans (dimensions in meters)

Main room - dining rounds - x 40



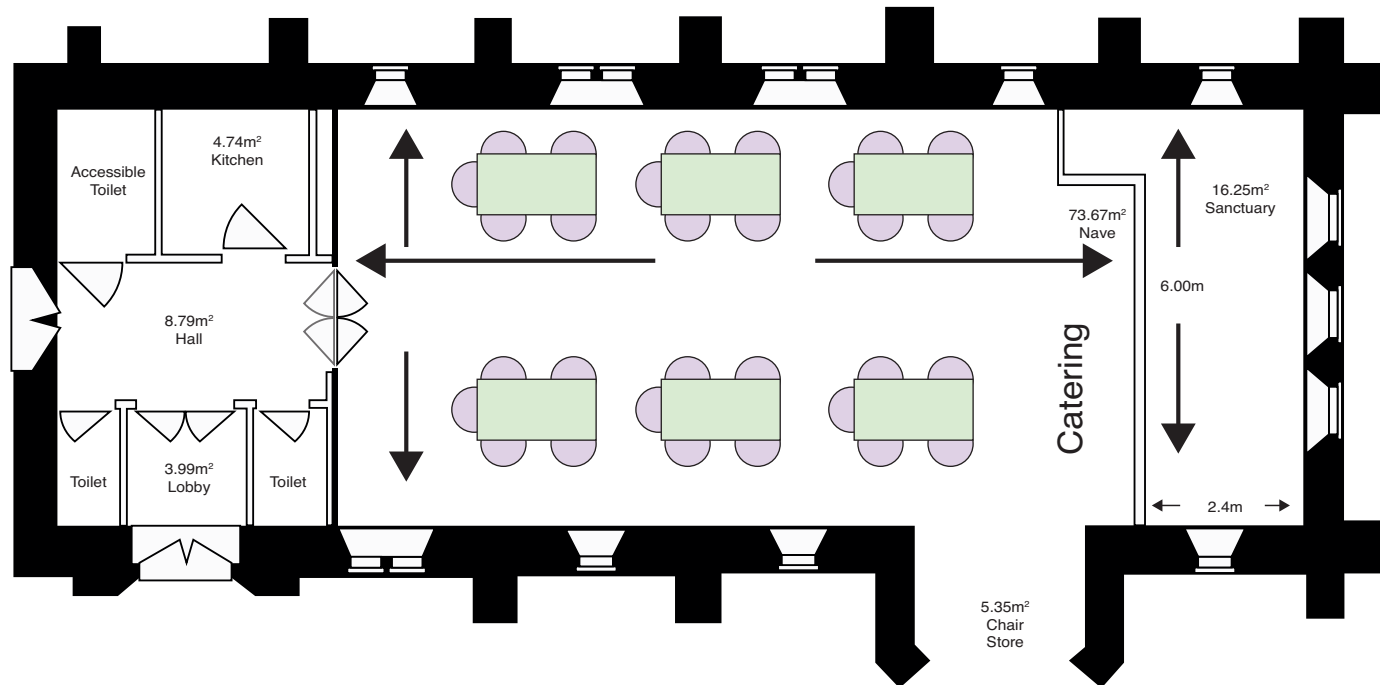
St Luke's Chapel Floorplans (dimensions in meters)

Main room - boardroom - x 24



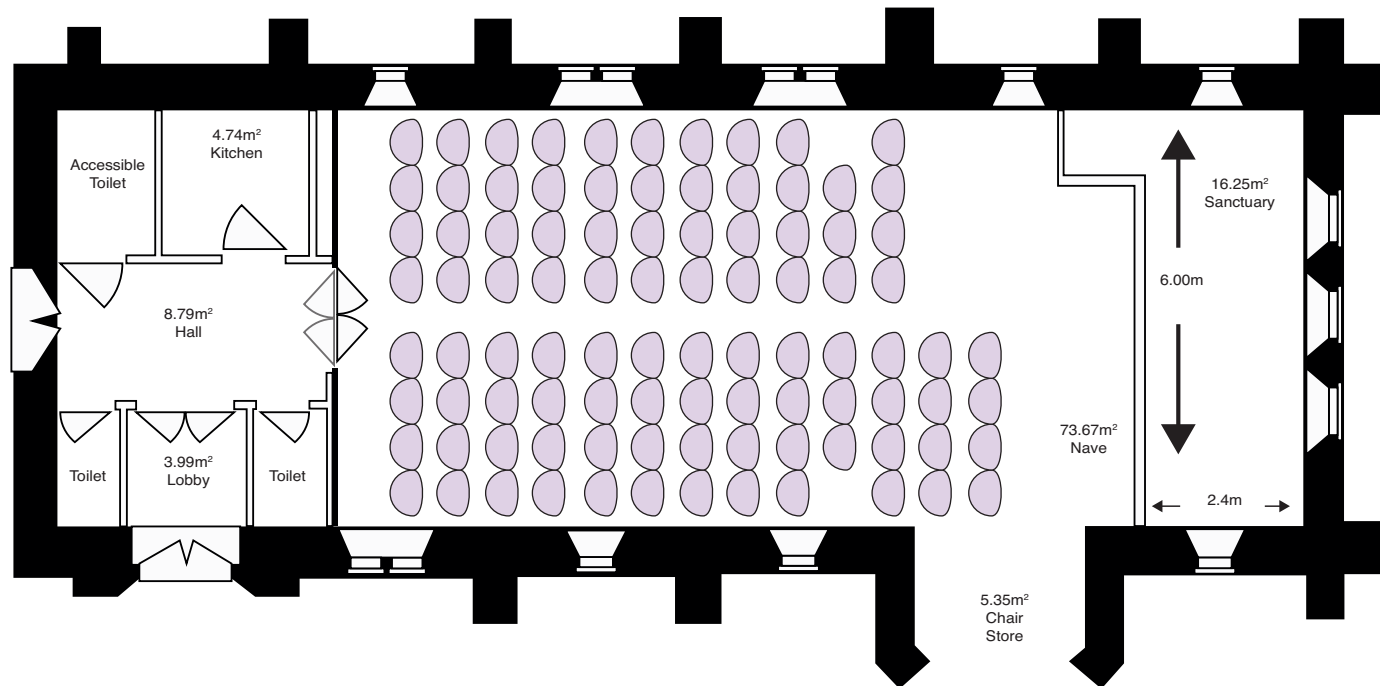
St Luke's Chapel Floorplans (dimensions in meters)

Main room - classroom x 36



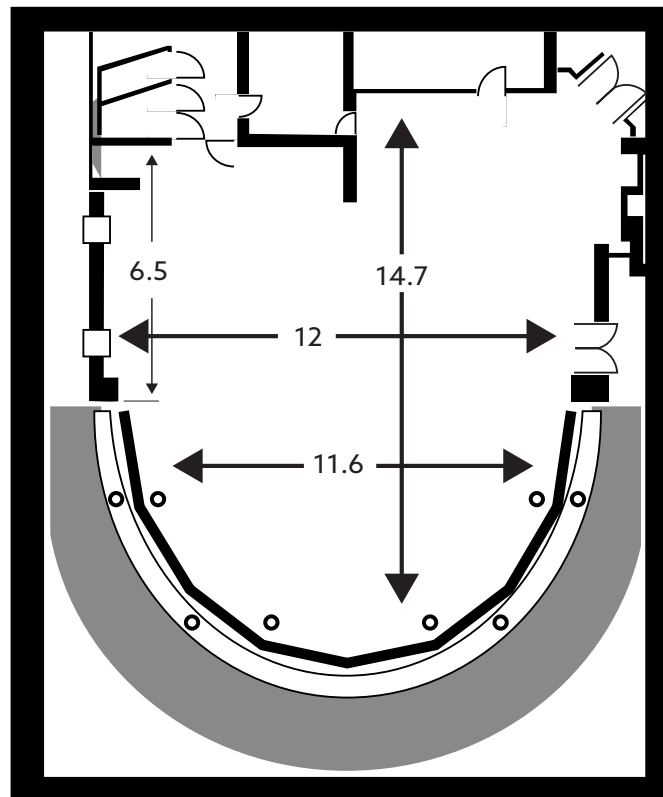
St Luke's Chapel Floorplans (dimensions in meters)

Main room - theatre x 80

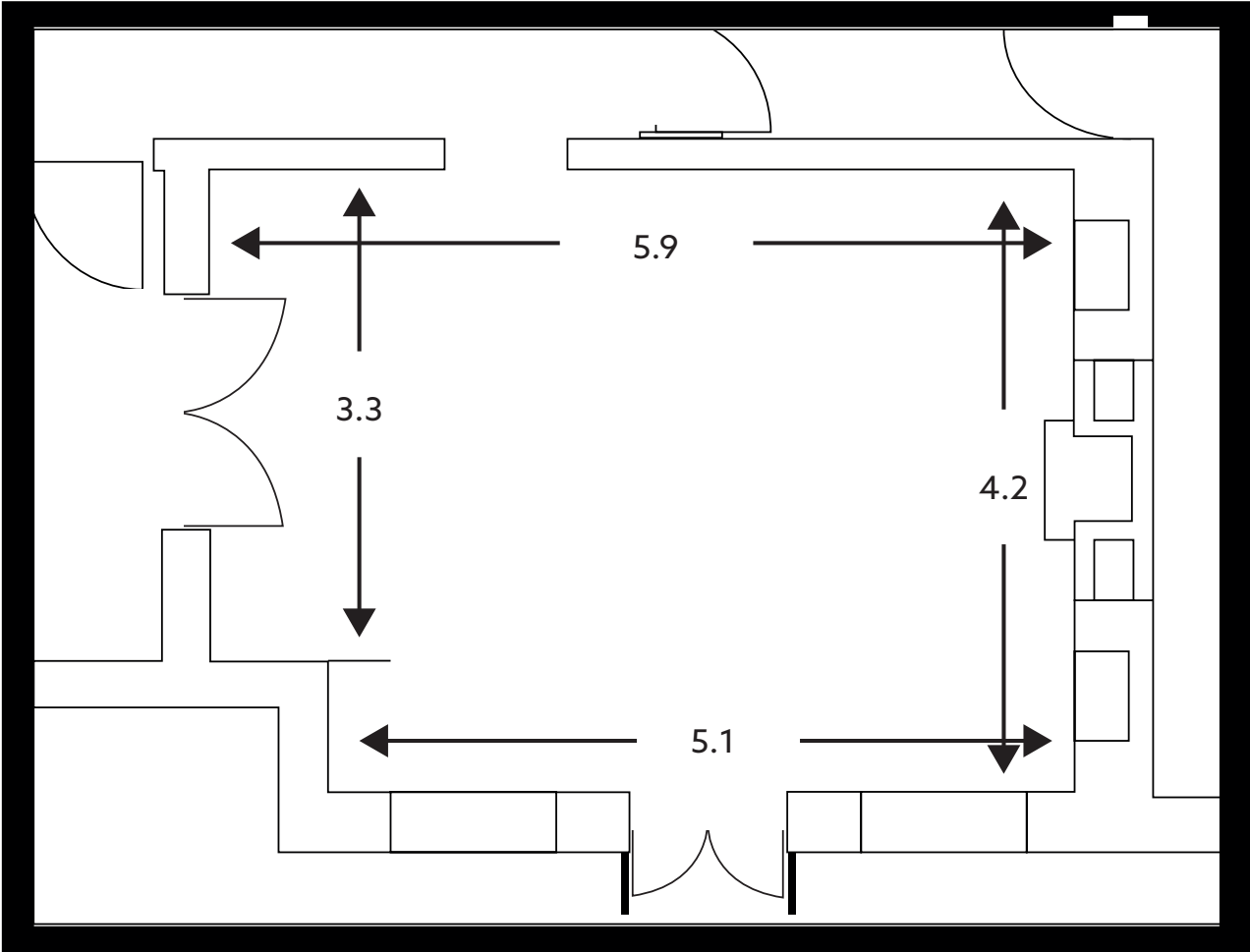


Osler House Floorplans (dimensions in meters)

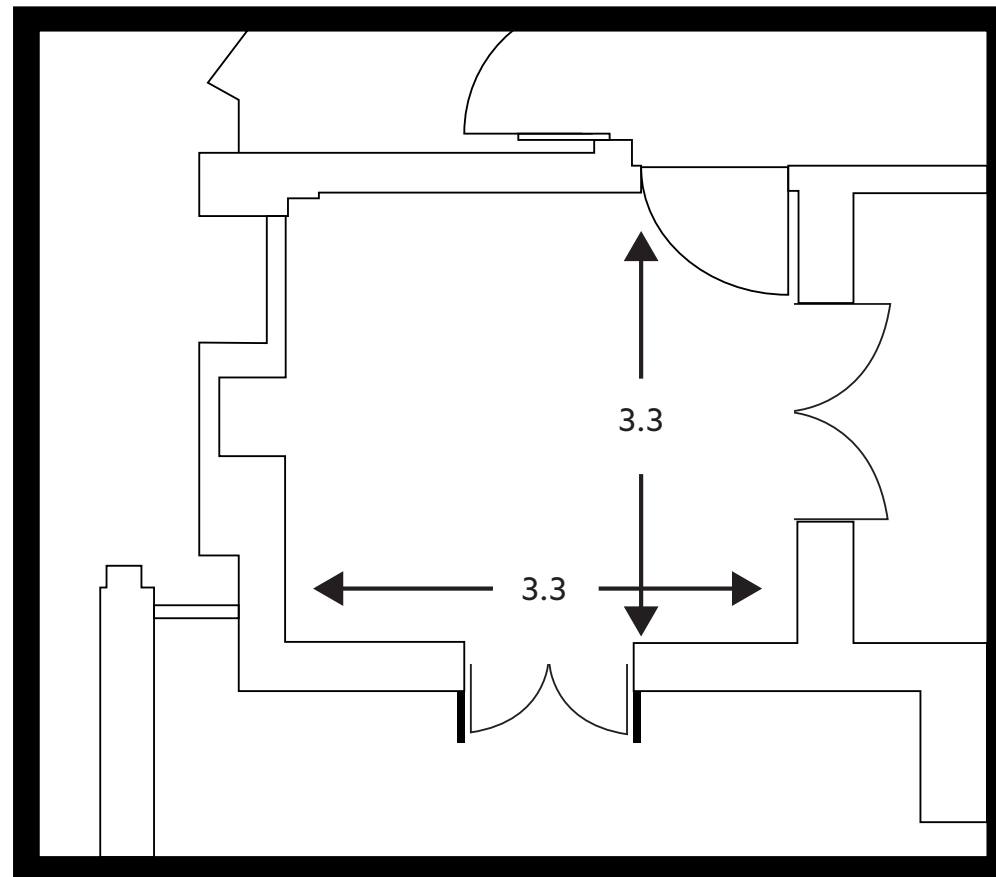
Function room



Meeting Room 1

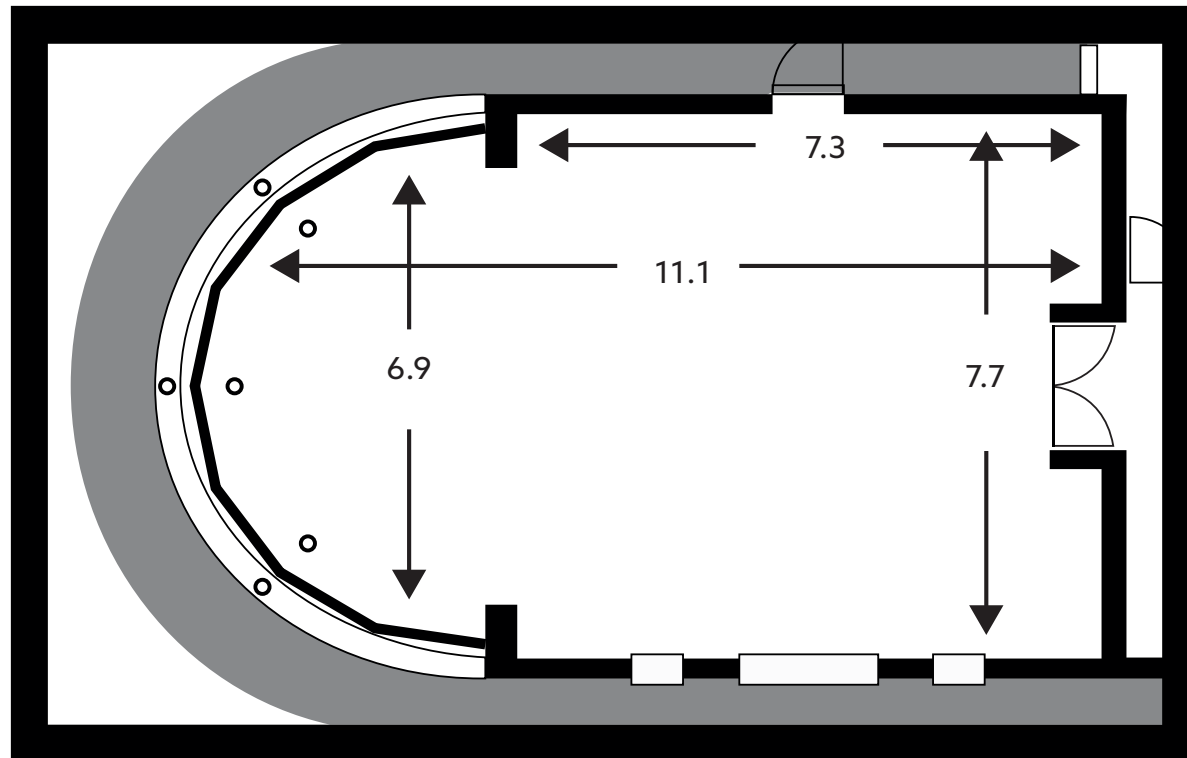


Meeting room 2



Osler House Floorplans (dimensions in meters)

Wing Tat Lee room



Let us help with your next event.
Contact us today on 01865 276905
venueenquiries@admin.ox.ac.uk
www.venues.ox.ac.uk