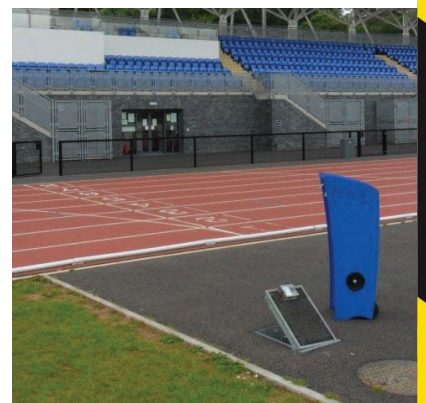


Pop Up Power Supplies[®]

Case Study Brochure





Pictured: Pop Up Power Unit at Wembley Arena Square

Pop Up Power Supplies®

**Safe, secure, silent power.
Retractable Utility Points
supplying electricity, water and
air to public places**

Pop Up Power Supplies® Ltd supply retractable service units that provide electricity, water and air supply to public spaces.

Our projects include installations for - Markets, Heritage, Parks, Town Centres, Universities, Sports Stadiums.

Our retractable service units provide legacy for special-purpose stadiums.

If you are working on a project and require technical data, product information, or specific requirements please get in touch with us. We can run through all aspects of your technical requirements and advise you on which pop power unit is most suitable.

Our pop up power units are favoured among local councils, town centre planners and market organisers, due to their retractable nature. When needed they provide a safe, secure and reliable outdoor power source, and when they are not needed they are simply retracted.

A series of standard products are available as well as a range of bespoke flip lid power units with recessed tops that can accommodate matching surface finishes. We also offer stainless steel bollards as well as in ground units to provide a comprehensive range of outdoor electrical supply sockets for any outdoor event.

Case Study Contents



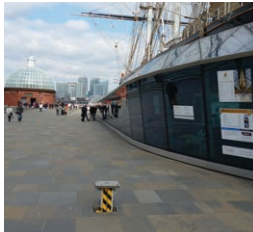
Covent Garden, London
Pages 4 - 5



Aberdeen University, Aberdeen
Rugby Historic Open Market, Rugby
Page 12



Chiswick House, London
Pages 6 - 7



Cutti Sark, London
Page 13



Stamford, Lincolnshire
Pages 8 - 9



Exeter University, Exeter
Gravesham Borough Council
Page 14



Chelsea Football Club, London
Pages 10 - 11



Gallions Reach Shopping Park, London
Page 15

Products



Pop Up Units



Power Bollards



In-Ground / Flip Lid Units



Pop Up Power Unit raised at Covent Garden, London



Pop Up Power Supplies® provide a safe, secure outdoor power supply to Covent Garden, London - A Grade 1 Listed Site

Pop Up Power Supplies® supplied six retractable service power units for installation in the Piazza at Covent Garden. The 450kg units are buried out of site beneath the famous cobbled piazza and are raised out of the ground when required by a removable turning handle. When not in use, the units do not impact on the historic appearance of the Piazzas - they are barely noticeable with the matching paving infill.

Covent Garden Technical Services Team needed a power solution for temporary stalls and events that are put on each week throughout the year. Pop Up Power Supplies® provided retractable service units with a combination of electric sockets, located near to the Transport Museum and also next to the portico of St Paul's Church in the Piazza. They provide a safe, efficient and stable outdoor power supply.

The Covent Garden Services Team now has access to a combination of 16A and 32A sockets in both single and three phase all with RCBO protection.



PROJECT DETAILS:

Product	PUPS01
Location:	Covent Garden, London
Power Supply:	16A and 32A sockets in single and three-phase, with RCBO protection
Material:	Stainless steel and concrete



Pop Up Power Supplies® provide a safe, secure outdoor power supply to Chiswick House A Grade 1 Listed Site

As part of the restoration program to Chiswick House, in London, The Chiswick House and Gardens Trust were looking for a reliable, safe and secure outdoor power source to place within the gardens.

The Trust contacted Pop Up Power Supplies® with their requirements, and after an initial consultation their range of retractable service units were recommended. It was important to the Chiswick House and Gardens Trust that the units would not permanently impact on the beautiful aesthetics of the gardens, while being able to provide a safe source of electricity for the outdoor events they hold throughout the year.

These units would supply electricity to power those outdoor activities, including seasonal events at the Burlington Pavilion.

Pop Up Power Supplies® retractable service units were ideal for the needs of the Trust, as the 450kg units are buried out of site beneath the surface of the gardens when not in use. Then when there is an outdoor event within the gardens, the power units are simply raised up out of the ground by turning a removable handle.

George Parker, Director at Pop Up Power Supplies®, commented, “When Chiswick House and Gardens Trust contacted us requesting an outdoor power supply, I spoke to them about our range of pop up power units. These units are simple to install and only require a small digger to create the opening in the ground. This was important to the Trust as it meant there was minimal disruption to the gardens.”

The integrated electric outlets provide either a 16A or 32A power supply in both single and three phase sockets, all with RCBO protection. In addition, the units specified at Chiswick House have a robust circular cast iron cover, which protects the units when they are fully retracted.

Chiswick House is a magnificent neo-Palladian villa set in beautiful historic gardens and is a popular tourist attraction. These gardens were fully restored in 2010 in a £12.1 million project and are exquisitely maintained by the Trust, offering visitors stunning vistas, architectural delights, hidden pathways and a dazzling array of flowers, shrubs and trees.



Pictured: Retractable Service Unit in the grounds at Chiswick House.

Pictured below: Pop Up Power Unit lowered back into the ground when not in use.

PROJECT DETAILS:

Product	PUPS01
Location:	Chiswick House, London
Power Supply:	16A and 32A sockets in single and three-phase, with RCBO protection
Material:	Stainless steel and concrete





In-Ground / Flip Lid Units, at Stamford

Council Planners specify Pop Up Power Supplies® for a discreet outdoor power supply in Stamford

Pop Up Power Supplies® provided a series of In-Ground Power Units to the town of Stamford, in order to deliver a discreet, safe outdoor power supply to market stalls.

Council Planners required a power source for outdoor stalls on market days, which could be retracted when not in use to preserve the integrity and beautiful aesthetics the town is famous for. Pop Up Power Supplies® were contacted, and after an initial consultation, their range of In-Ground Power Units were recommended, for a number of reasons.

Firstly, Council Planners required a power source to replace all of the unsightly trailing cables that were used previously to power the stalls. On market days these often restricted access for shoppers on the pavement areas, not to mention the hazard they posed with the risk of electrocution. The In-Ground Units (IGUs) provided by Pop Up Power Supplies® are an ideal solution as they provide a safe source of electricity and remove any trip hazards. Market stalls can be plugged into the sockets inside the IGUs, and the lids are closed and locked, preventing any public access.

The second reason why Council Planners favoured the IGUs was the fact that in between market day events, the units could be closed and, as a result, had very limited impact on the town's aesthetic look. The covers of the IGUs are recessed so paving can be installed in the top, making them

adaptable to the surrounding environment. They are also tested unfilled to FACTA Class B loadings.

Thirdly, the In-Ground Units also brought long-term cost benefits to Council Planners in Stamford. The fact that the units can be closed when in operation and in non-operation mode, minimises the potential for damage due to vandalism and harsh weather. The power sockets are safely located within the high-grade mild steel structure, which is hot dip galvanised to BS EN: ISO1461.

George Parker, Director at Pop Up Power Supplies®, commented, *"When we were contacted by Council Planners at Stamford, they were looking for a power supply that could be used within certain paved areas of the town. They required units that provided a safe supply of electricity to the public areas, and that also had minimal impact on the natural surroundings."*

"We recommended our In-Ground Units, as they not only provided a safe, secure power source but had little impact on the area. The real advantage with these units is they can be operated with the lids closed, which creates a safer and more attractive landscape."

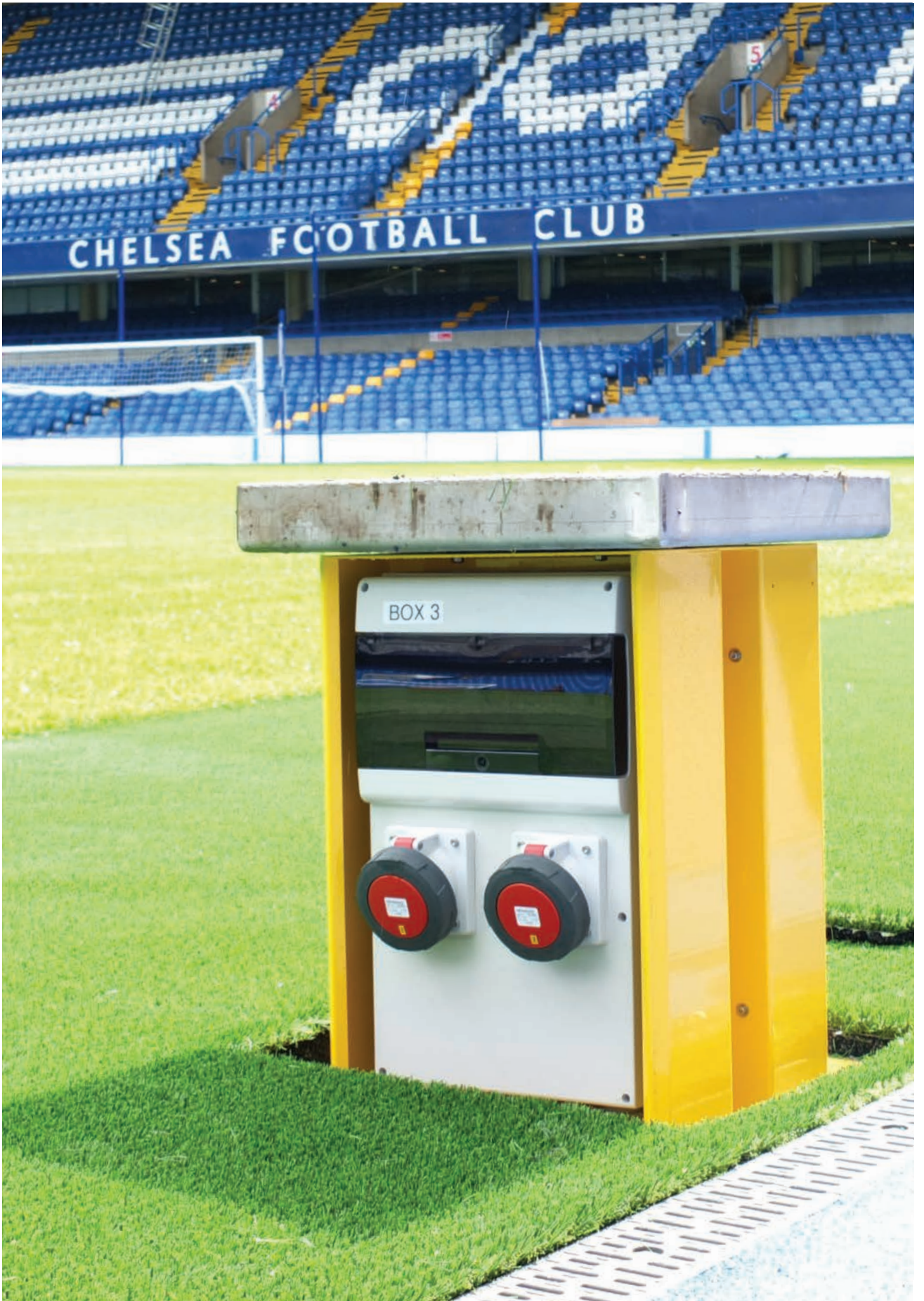
Located in Lincolnshire, Stamford is a beautiful town, rich in historical architecture. Often referred to as the 'finest stone town in England', Stamford contains a wealth of 17th and 18th century stone buildings and medieval structures. Council Planners were pleased with the In-Ground Units supplied by Pop Up Power Supplies® as, not only did they benefit from a safe source of outdoor electricity for the local market stalls, but there was minimal impact on the integrity and beauty of the local area.



Pictured: IGU lowered at Stamford

PROJECT DETAILS:

Product	IGU Slim
Location:	Stamford, Lincolnshire
Power Supply:	Single phase incoming supply Type 1 = 1 x 32A IP67 + 1 x 16A IP67, and Type 2 = 2 x 16A IP67
Material:	High grade mild steel – Hot Dip Galvanised to BS EN: ISO1461



Pop Up Power Supplies® specified at Chelsea Football Club

Pop Up Power Supplies® supplied nine retractable service power units within the stadium arena at Chelsea Football Club. The half tonne units are buried out of site beneath the perimeter of the pitch and are raised out of the ground when required.

Chelsea Ground Staff needed a power solution to enable them to power their specialist UV lighting equipment to promote the growth of the pitch.

The Chelsea Ground Staff now have access to multiple 63A three phase IP67 power feeds to do just that.

The cabling and power units were installed and commissioned by Springfield Engineers over a 6 week time frame.

Pop Up Power Supplies® also supply electrical connection through In Ground Units with flip top lids and Bollards in a variety of designs to suit the surroundings.



Pictured: Retractable Service Unit at Chelsea FC

Pictured below: Pop Up Power Unit lowered back into the ground when not in use.

PROJECT DETAILS:

Product	PUPS01
Location:	Chelsea Football Club, London
Power Supply:	63A three-phase IP67 sockets, with RCBO protection
Material:	Stainless steel and concrete





Aberdeen University

Part of the Old Aberdeen Campus, King's College is considered the symbolic centre of the ever-growing University.

The popular PUPS01 unit from Pop Up Power Supplies® were installed in the outside lawn areas by The Kings College Chapel and also Elphinstone Hall to provide outdoor power to marquees used for weddings and corporate events.



PROJECT DETAILS:

Product	PUPS01
Location:	Aberdeen University, Aberdeen
Power Supply:	16A and 32A IP67 sockets - single and three phase with RCBO protection
Material:	Stainless steel and concrete

Rugby Town Centre Historic Open Market



The unit to the left is a PUPS05 unit with 2 x 32A single phase sockets with RCBOs on one side and 4 x 16A single phase sockets on the other.

The unit above is a PUPS01 unit with 1 x 32A three phase socket with RCBO on one side and 2 x 32A single phase sockets + 4 x 16A single phase sockets, all with RCBOs, on the opposite side.

These units were supplied to the market in Rugby Town Centre in Warwickshire, This is an historic market place and has been trading since 1235 under Royal Charter.

Since these units were supplied in 2005, they have been used on each market day, three times a week. 11 years later, they show some wear, but are still in good working order.

Pop Up Power Supplies® retractable service units specified at Cutty Sark Historic Monument

Part of the Royal Museums Greenwich, the Cutty Sark is a popular tourist attraction where visitors can see first-hand the legendary sailing ship. The attraction boasts a popular events calendar where stalls and various stands occupy the paving area next to the ship. These stalls all require an outdoor power source, which is why Pop Up Power Supplies® were approached.

The owners of the Royal Museums Greenwich specified that an outdoor electricity supply should power the stalls next to the Cutty Sark for various events, but in-between such events, the area should be clear of obstruction for the high volumes of visitors.

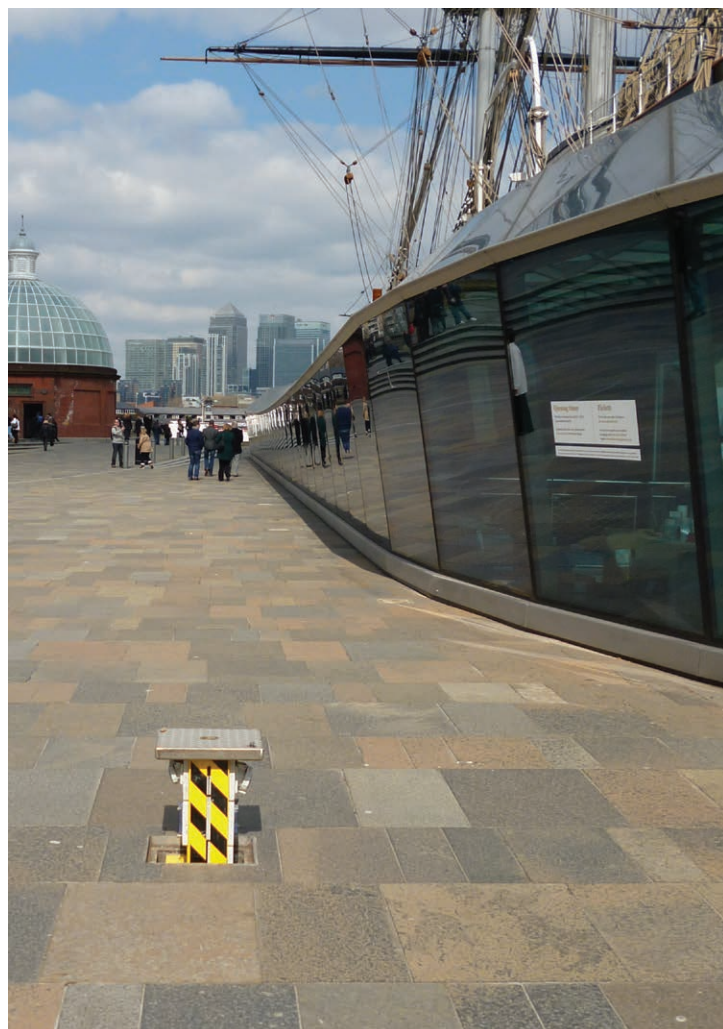
Pop Up Power Supplies® pop up units are the ideal fit for this requirement as they can be raised out of the ground by simply turning a handle, then when they are not needed they are lowered back into the ground again by turning the handle.

Pop Up Power Supplies® worked with the client to determine exactly which units were needed, how many, where to place them, and the exact power requirements that were needed. Their pop up units were recommended which provide a 16A or 32A power supply in both single and three phase plug sockets, all with RCBO protection.

The units specified at Cutty Sark comprise of a stainless steel and concrete structure, with a total weight of 125kg. The unit covers are made up of stainless steel AISI304 and offer significant protection to the power units when they are fully retracted.

PROJECT DETAILS:

Product	PUPS04
Location:	Cutty Sark, London
Power Supply:	16A and 32A IP67 sockets in single and three-phase, with RCBO protection
Material:	Stainless steel and concrete





PROJECT DETAILS:

Product	PUPS01
Location:	Exeter University, Exeter
Power Supply:	32A & 16A sockets in single and three phase, with RCBO protection
Material:	Stainless steel and concrete

Pop Up Power Supplies® provides a safe source of outdoor power for Exeter University

Exeter University wanted to utilise the space outside the new Forum building for open days and events. Considered the heart of the Streatham Campus, the popular area would be filled with outdoor stalls which needed powering.

Pop Up Power Supplies® were able to offer their range of PUPS01 retractable service units. These power supply units were ideal for the needs of the University, as the pop up power sockets provide a safe and stable source of electricity needed for the University stalls. The pop up units provide a 125A power supply in both single and three phase plug sockets, all with RCBO protection.

The units specified at Exeter University comprise of a stainless steel and concrete structure, with a total weight of 450kg. The unit covers are made up of stainless steel AISI304 and offer significant protection to the power units when they are fully retracted.



Power Bollards provide a secure outdoor power supply for Gravesham Borough Council

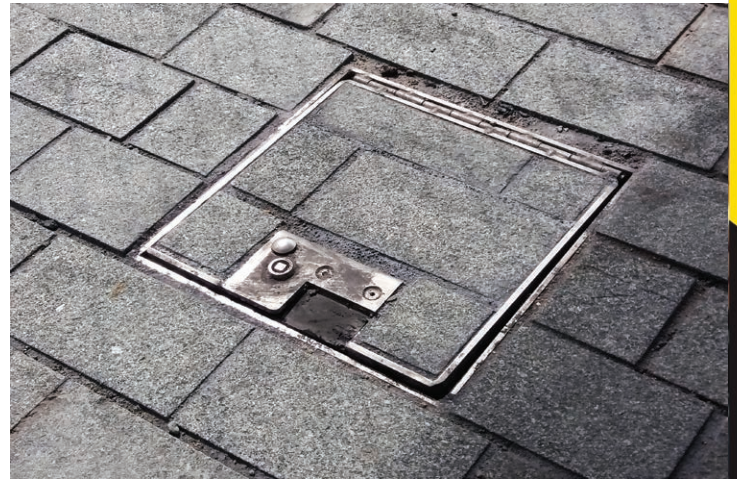
Pop Up Power Supplies® were approached by council planners to provide an outdoor power supply for an area outside the local civic centre which is popular for various outdoor festivals and other events.

Pop Up Power Supplies® offered their range of Power Bollards. Specified in a Button Top Supply Bollard with hatch closure, the slim bollards are all located around the perimeter area next to walls, and as a result have a limited impact on the outdoor area.

The power bollards are a popular choice of street furniture as they are an elegant design and complement the surround environment well with their sleek aesthetics. They are also robust and hard wearing, and constructed using AISI 304 or AISI 316 stainless steel. Clients have the option of a mirrored finish, powder painted RAL colours or custom paint finishes. In addition to the Button Top styled bollards used in Gravesham, they are also available in three other configurations – Parc Paris, Domed, and Sloping Top.

PROJECT DETAILS:

Product	Power Bollards	Power Supply:	2/ 4/ 6/ 8 cee sockets, 16/32A with protection max. 125A
Location:	Gravesham Council, Kent	Material:	Stainless steel AISI 304/316



Pop Up Power Supplies® retractable service units specified at Gallions Reach Shopping Centre

The developers at Gallions Reach Shopping Centre in Beckton, East London, required an outside source of power in an open area of the development. It was intended that the area be used for an arrangement of small market stalls on an occasional basis. Also, the space was to be used for the staging of small scale entertainment events.

The units decided upon were the PUPS 3030 Floorbox. This unit was considered ideal as it has a small visible profile and could be placed at multiple points around the outside paved area and the covers could be fitted to match the surrounding pavior. A total of eight units were installed around the perimeter of the site giving access to electricity from multiple points.

The rear part of the area had a vertical garden wall and the PUPS Floorboxes along this side were fitted with a water connection so that maintenance staff were able to connect hoses for the watering system.

PROJECT DETAILS:

Product	PUPS 3030 Floorbox
Location:	Gallions Reach - Beckton E London
Power Supply:	16A sockets in single phase with RCBO protection and water connection
Material:	Stainless steel AISI 304

The PUPS 3030 Floorbox is manufactured entirely of stainless steel and each of the units was fitted with 2 x 16A single phase IP67 sockets with individual RCBOs. Some of the units were also supplied with a water connection.

The PUPS Floorbox is ideal for use in smaller areas where space is at a premium. It operates with the lid locked and closed and can be left unattended when in use so there is no danger of any interference or vandalism.



Pop Up Unit at Wembley Arena Square



Pop Up Power Supplies® Ltd

Telephone 020 8227 0208
Email info@popuppower.co.uk
Web www.popuppower.co.uk

PO Box 1447, Ilford, Essex, IG2 6GT United Kingdom

There when you need them, **hidden when you don't...**