

Hydra-Valve

Butterfly Valves

Project Location: Ashford

End Customer: Thames Water

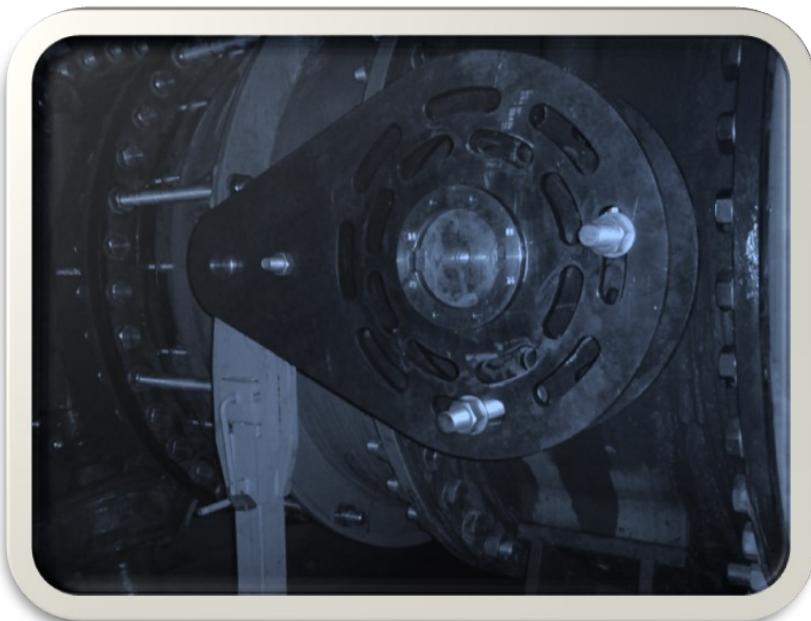
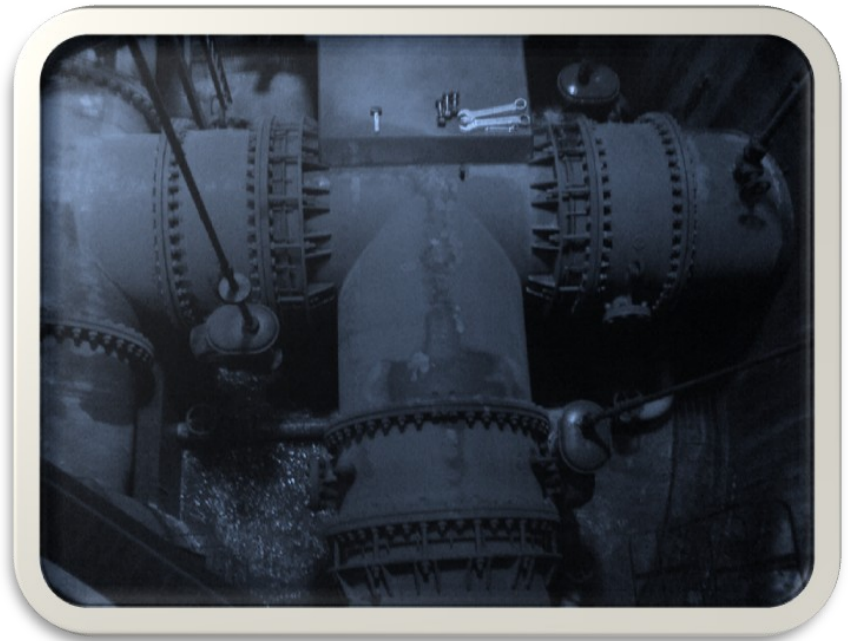
Project Description

Twelve 1800mm Butterfly Valves required isolation for tunnel re lining works.

Confirmation of the quality of the isolations were required and remedial work was required to ensure all valves were shut so that entry into the pipe lines could occur.

Hydra-Valve personnel were approached for a solution to this and an assessment team was mobilised.

The team carried various works including valve releases, using the HVL-VR System, improved seating of the valves, and mechanical locking of the valves using HVL-L's.



Entry was then made into the pipe work knowing that the isolations made were secure.

Hydra-Valve personnel had provided the customer with a solution which met the Health and Safety Requirements, very tight time scales and within the financial requirements of the project.

Saving you money & improving your Carbon Footprint

Tel: 0844 358 3001 Email: info@hydra-valve.com

Hydra-Valve
ADVANCED VALVE RELEASE SYSTEMS