



TWINNING

COORDINATION
FOR KIDS + ADULTS
2020



SF'S TWINNING
STYLES HAVE
TEAR-OUT LABELS
FOR EASY
REBRANDING



KIDS' SM083/SM121/SM526
WOMEN'S SK083/SK123/UNISEX SF526
MEN'S SF083/SF121/UNISEX SF526

THE FULL SF RANGE IS AVAILABLE TO VIEW ONLINE



SF-CLOTHING.COM



SF.PROMO.CLOTHING



SFSKINNFIT



SFSKINNFIT



SFSKINNFITCLOTHING



SF AND SF MINNI OFFER
A COORDINATED RANGE OF 21
ON-TREND STYLES NOW AVAILABLE
FOR MEN, WOMEN AND KIDS.

IT JUST GETS BETTER

FOR KIDS

SM083



KIDS' TARTAN
LOUNGE PANTS

100% COTTON
115GSM FLANNEL (TWILL WEAVE)
SIZES (YRS): 5-6, 7-8, 9-10, 11-12, 13.



FOR WOMEN

SK083



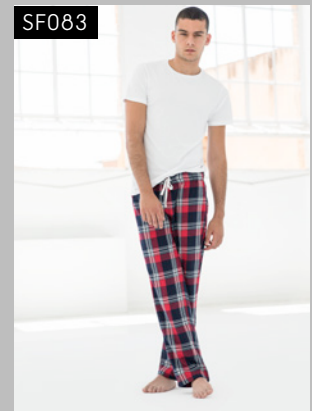
WOMEN'S TARTAN
LOUNGE PANTS

100% COTTON
115GSM FLANNEL (TWILL WEAVE)
SIZES: XXS-XL



FOR MEN

SF083



MEN'S TARTAN
LOUNGE PANTS

100% COTTON
115GSM FLANNEL (TWILL WEAVE)
SIZES: XS-XXL



LOUNGEWEAR

FOR KIDS

SM121



KIDS' FEEL GOOD STRETCH T

SIZES (YRS): 3-4, 5-6, 7-8, 9-10, 11-12.



FOR WOMEN

SK121



WOMEN'S FEEL GOOD STRETCH T

SIZES: XS-XXL



FOR MEN

SF121



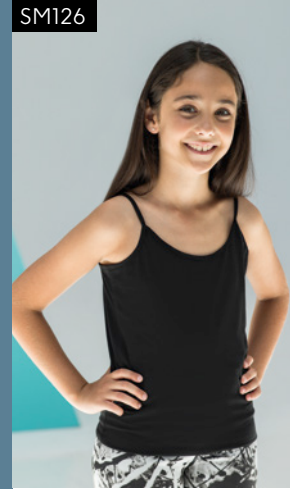
MEN'S FEEL GOOD STRETCH T

SIZES: XS-XXL (XS - BLACK & WHITE)



FOR KIDS

SM126



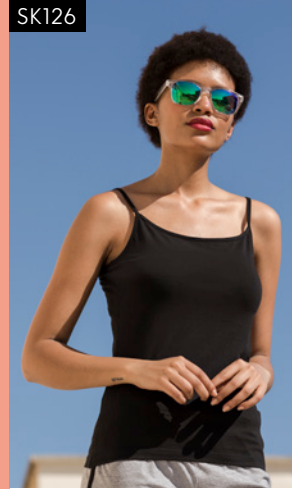
KIDS' FEEL GOOD STRETCH SPAGHETTI VEST

SIZES (YRS): 5-6, 7-8, 9-10, 11-12.



FOR WOMEN

SK126



WOMEN'S FEEL GOOD STRETCH SPAGHETTI VEST

SIZES: XS-XL



SM123



KIDS' FEEL GOOD STRETCH VEST

SIZES (YRS): 5-6, 7-8, 9-10, 11-12.



SK123



WOMEN'S FEEL GOOD STRETCH VEST

SIZES: XS-XXL



SF123

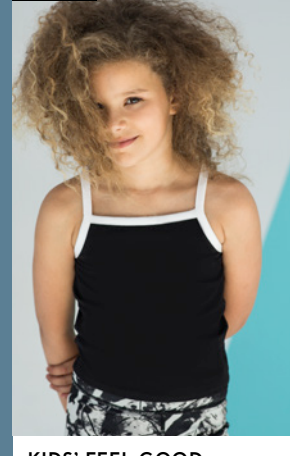


MEN'S FEEL GOOD STRETCH T

SIZES: S-XXL



SM127



KIDS' FEEL GOOD STRETCH CONTRAST STRAPPY VEST

SIZES (YRS): 5-6, 7-8, 9-10, 11-12.



SK127



WOMEN'S FEEL GOOD STRETCH CONTRAST STRAPPY VEST

SIZES: XS-L



FEEL GOOD STRETCH RANGE FABRIC COMPOSITIONS:

H.PINK & H.RED: 90% COTTON, 6% VISCOSE, 4% ELASTANE

H.GREY: 81% COTTON, 15% VISCOSE, 4% ELASTANE

H.CHARCOAL: 60% COTTON, 36% POLYESTER, 4% ELASTANE

H.BLUE, H.NAVY & H.PURPLE: 65% POLYESTER, 30% COTTON, 5% ELASTANE

FOR KIDS



SM514

KIDS' DROP SHOULDER SLOGAN TOP

100% COTTON
220GSM SINGLE JERSEY
SIZES (YRS): 5-6, 7-8, 9-10, 11-12.



FOR WOMEN



SF514 UNISEX

UNISEX DROP SHOULDER SLOGAN TOP

100% COTTON
220GSM SINGLE JERSEY, GARMENT WASHED
(H.GREY: 85% COTTON, 15% VISCOSE)
SIZES: XXS-XXL



FOR KIDS



SM202

KIDS' STRIPED T

100% COTTON
160GSM SINGLE JERSEY
SIZES (YRS): 5-6, 7-8, 9-10, 11-12.



FOR WOMEN



SF202 UNISEX

UNISEX STRIPED T

100% COTTON
160GSM SINGLE JERSEY
(H.GREY: 85% COTTON, 15% VISCOSE)
SIZES: XXS-XXL



FOR MEN



SM271

KIDS' LONG SLEEVED BASEBALL T

100% COTTON
140GSM SINGLE JERSEY
(H.GREY: 85% COTTON, 15% VISCOSE)
SIZES (YRS): 5-6, 7-8, 9-10, 11-12.



SK271

WOMEN'S LONG SLEEVED BASEBALL T

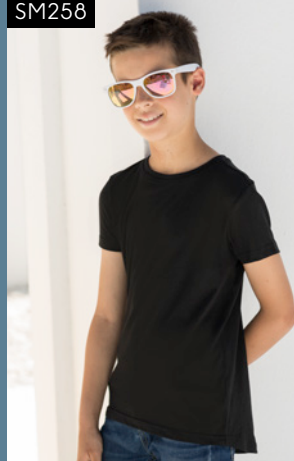
100% COTTON
140GSM SINGLE JERSEY
(H.GREY: 85% COTTON, 15% VISCOSE)
SIZES: XS-XL



SF271

MEN'S LONG SLEEVED BASEBALL T

100% COTTON
140GSM SINGLE JERSEY
(H.GREY: 85% COTTON, 15% VISCOSE)
SIZES: XS-XXL



SM258

KIDS' LONGLINE T WITH DIPPED HEM

100% COTTON
140GSM SINGLE JERSEY
SIZES (YRS): 5-6, 7-8, 9-10, 11-12.



SF258

MEN'S LONGLINE T WITH DIPPED HEM

100% COTTON
140GSM SINGLE JERSEY
(H.CHARCOAL: 60% COTTON, 40% POLYESTER)
SIZES: S-XXL



FOR KIDS

SM170



KIDS' HIGH NECK CROP VEST

96% COTTON, 4% ELASTANE
220GSM SINGLE JERSEY
SIZES (YRS): 5-6, 7-8, 9-10, 11-12.



SM241



KIDS' FASHION WORKOUT VEST

90% POLYESTER, 10% ELASTANE
150GSM SINGLE JERSEY
SIZES (YRS): 5-6, 7-8, 9-10, 11-12.



SM236



KIDS' FASHION CROP TOP

WITH DOUBLE LAYER FRONT
96% POLYESTER, 4% ELASTANE
240GSM SINGLE JERSEY
(+ JACQUARD BAND)
SIZES (YRS): 5-6, 7-8, 9-10, 11-12.



FOR KIDS

SM424

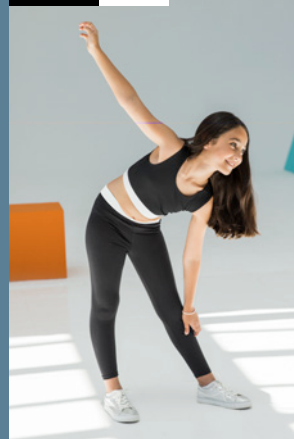


KIDS' REVERSIBLE WORKOUT LEGGINGS

89% POLYESTER, 11% ELASTANE
270GSM BONDED INTERLOCK
SIZES (YRS): 5-6, 7-8, 9-10, 11-12.



SM426 NEW

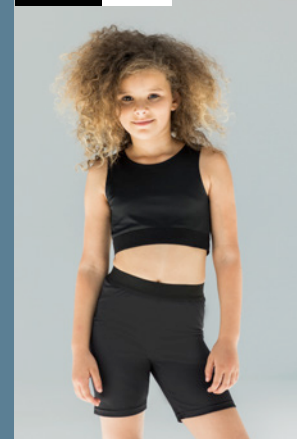


KIDS' FASHION LEGGINGS

88% POLYESTER, 12% ELASTANE
280GSM SINGLE JERSEY
(+ JACQUARD BAND)
SIZES (YRS): 5-6, 7-8, 9-10, 11-12.



SM427 NEW



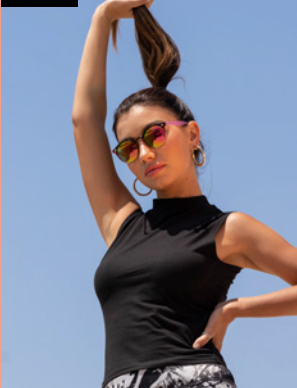
KIDS' FASHION CYCLING SHORTS

88% POLYESTER, 12% ELASTANE
280GSM SINGLE JERSEY
(+ JACQUARD BAND)
SIZES (YRS): 5-6, 7-8, 9-10, 11-12.



FOR WOMEN

SK170



WOMEN'S HIGH NECK CROP VEST

96% COTTON, 4% ELASTANE
220GSM SINGLE JERSEY
SIZES: XS-L



SK241

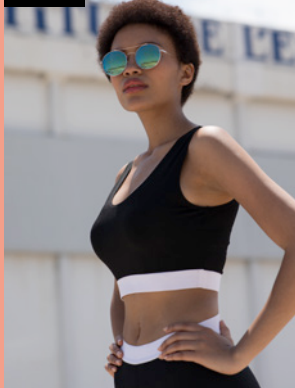


WOMEN'S FASHION WORKOUT VEST

90% POLYESTER, 10% ELASTANE
150GSM SINGLE JERSEY
SIZES: XS-XXL



SK236



WOMEN'S FASHION CROP TOP

96% POLYESTER, 4% ELASTANE
240GSM SINGLE JERSEY
(+ JACQUARD BAND)
SIZES: XS-L



FOR WOMEN

SK424

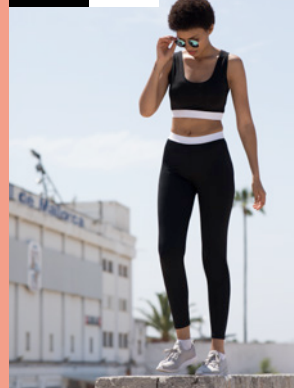


WOMEN'S REVERSIBLE WORKOUT LEGGINGS

89% POLYESTER, 11% ELASTANE
270GSM BONDED INTERLOCK
SIZES: XS-L



SK426 NEW

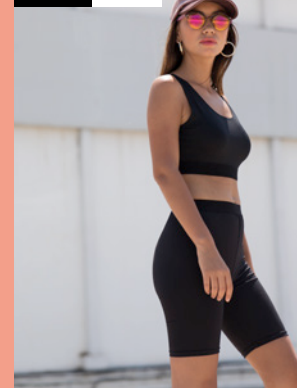


WOMEN'S FASHION LEGGINGS

88% POLYESTER, 12% ELASTANE
280GSM SINGLE JERSEY
(+ JACQUARD BAND)
SIZES: XS-XL



SK427 NEW



WOMEN'S FASHION CYCLING SHORTS

88% POLYESTER, 12% ELASTANE
280GSM SINGLE JERSEY
(+ JACQUARD BAND)
SIZES: XS-XL



FOR KIDS

SM062



KIDS' SHORTS

96% COTTON, 4% ELASTANE
220GSM SINGLE JERSEY
SIZES (YRS): 5-6, 7-8, 9-10, 11-12.



FOR WOMEN

SK062



WOMEN'S SHORTS

96% COTTON, 4% ELASTANE
220GSM SINGLE JERSEY
SIZES: S-L



FOR MEN

SM069

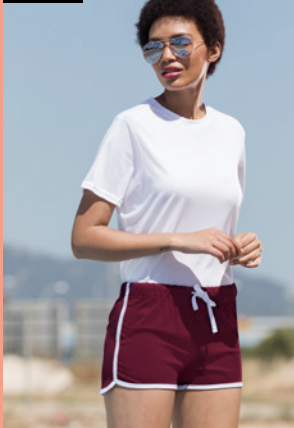


KIDS' RETRO SHORTS

100% COTTON
220GSM SINGLE JERSEY
SIZES (YRS): 5-6, 7-8, 9-10, 11-12.



SK069



WOMEN'S RETRO SHORTS

100% COTTON
220GSM SINGLE JERSEY
(H.GREY: 85% COTTON, 15% VISCOSE)
SIZES: XS-XXL



SF069



MEN'S RETRO SHORTS WITH POCKETS

100% COTTON
250GSM FRENCH TERRY
(H.GREY: 85% COTTON, 15% VISCOSE)
SIZES: S-XL



FOR KIDS

SM064



KIDS' LEGGINGS

96% COTTON, 4% ELASTANE
190GSM SINGLE JERSEY
SIZES (YRS): 3-4, 5-6, 7-8, 9-10, 11-12.



FOR WOMEN

SK064



WOMEN'S LEGGINGS

96% COTTON, 4% ELASTANE
190GSM SINGLE JERSEY
SIZES: XS-XL



SM425



KIDS' SLIM FIT CUFFED JOGGERS

60% COTTON, 40% POLYESTER
250GSM BRUSHED BACK FLEECE
(H.GREY: 75% COTTON,
20% POLYESTER, 5% VISCOSE)
SIZES (YEARS): 5-6, 7-8, 9-10, 11-12.



SK425



WOMEN'S SLIM FIT CUFFED JOGGERS

60% COTTON, 40% POLYESTER
250GSM BRUSHED BACK FLEECE
(H.GREY: 75% COTTON,
20% POLYESTER, 5% VISCOSE)
SIZES: XS-XL



FOR MEN

SF425



MEN'S SLIM FIT CUFFED JOGGERS

60% COTTON, 40% POLYESTER
250GSM BRUSHED BACK FLEECE
(H.GREY: 75% COTTON,
20% POLYESTER, 5% VISCOSE)
SIZES: S-XXL



FOR KIDS

SM526



KIDS' SLIM FIT ZIP-THROUGH HOODY

60% COTTON, 40% POLYESTER
250GSM BRUSHED BACK FLEECE
(H.GREY: 75% COTTON, 20% POLYESTER, 5% VISCOSE)
SIZES (YRS): 5-6, 7-8, 9-10, 11-12.



FOR WOMEN

SF526 UNISEX



UNISEX SLIM FIT ZIP-THROUGH HOODY

60% COTTON, 40% POLYESTER
250GSM BRUSHED BACK FLEECE
(H.GREY: 75% COTTON, 20% POLYESTER, 5% VISCOSE)
SIZES: XXS-XXL



FOR MEN



SF KIDS - ADULTS COORDINATED STYLES
CHECK OUT THE FULL RANGE AT
SF-CLOTHING.COM

SM470



KIDS' ALL-IN-ONE

80% COTTON, 20% POLYESTER
280GSM BRUSHED BACK FLEECE
(H.GREY: 71% COTTON, 23% POLYESTER, 6% VISCOSE)
SIZES (YRS): 3-4, 5-6, 7-8, 9-10, 11-12, 13.



SF470 UNISEX



UNISEX ALL-IN-ONE

80% COTTON, 20% POLYESTER
280GSM BRUSHED BACK FLEECE
(H.GREY: 71% COTTON, 23% POLYESTER, 6% VISCOSE)
SIZES: XXS/XS, S/M, L/XL.

