



goplasticpallets.com[®]
The Responsible Plastic Pallet Company

RESPONSIBLE



Thousands of pallets
and containers
available from stock for
immediate delivery

Contents

Pallets

- 4 1200 x 1000
- 7 1200 x 800
- 9 400 x 300 | 600 x 400 | 800 x 600
- 11 1140 x 1140
- 12 1200 x 1200 | 1200 x 900
1300 x 1100 | 1400 x 1400

Plastic Pallet Boxes

- 13 Rigid Pallet Boxes
- 16 Folding Large Containers

Small Containers

- 19 Euro Box Range
- 23 Automotive Range
- 24 Attached Lid Range
- 25 Food & Agriculture Range
- 27 Folding Box Range
- 28 Plastic Box Lids
- 29 Transport Dollies


PLASTIC PALLETS BUYERS GUIDE

We stock in excess of 160 different styles of plastic pallets suitable for all types of applications and 32 different sizes and styles of plastic pallet boxes. 96% of the pallets we stock are made from recycled household and business plastic waste.

To help you find the product best suited to your application, this useful Buyers Guide includes information about different materials, loading capacities and personalisation options, as well as an explanation as to why we are “The Responsible Plastic Pallet Company”.

Materials

Our plastic pallets and plastic pallet boxes are manufactured from a variety of different materials:

- High Density Polyethylene (HDPE)
- Polypropylene (PP)
- Polyethylene terephthalate (PET)
- Polyethylene (PE)
- Polyolefin (PO)
- Recycled 

Solid, Perforated or Open Deck

Many of our plastic pallets come with the option of a closed solid deck or an open ventilated deck. Our pallet boxes with solid sides offer maximum strength and rigidity, where perforated sides offer excellent ventilation – popular for grocery applications. Both types can be easily cleaned.

Dynamic Load

A dynamic load rating refers to the weight placed on a pallet that is then put in motion. For example, a pallet rated for a dynamic load of 1000kg means you can put up to 1000kg of an evenly distributed product on the pallet, then the pallet could be placed on a conveyor system or moved around a warehouse by a forklift or hand pallet truck.

Static Load

A static load rating refers to the weight placed on a pallet while at rest. For example, if a set of three pallets each with a 1000kg static load capacity are stacked, then the bottom pallet would have a grand total of 3000kgs.

Racking Load

The racking load quantifies the maximum evenly spread interlocking load a pallet can accommodate in standard beam racking, so by its nature with less support, it is always less than the static load.

Colour Options

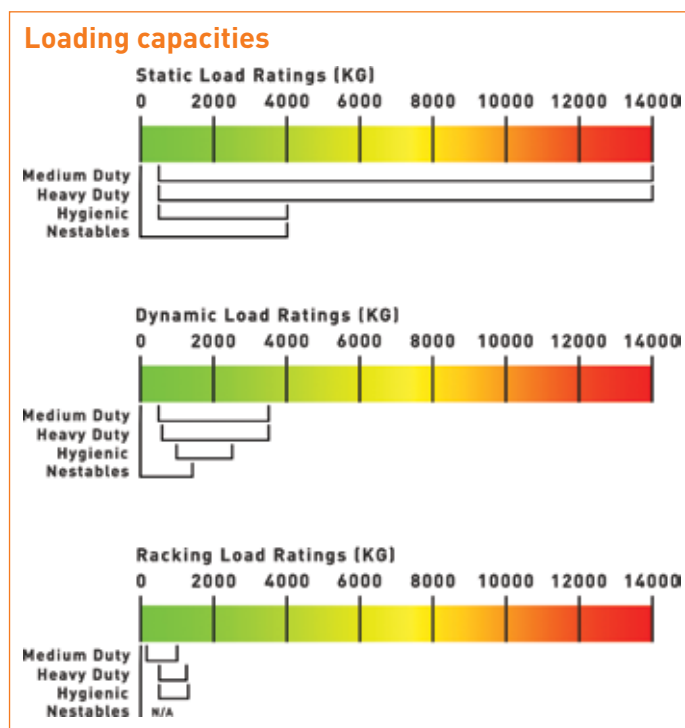
As standard most of our pallets come in Black. Some varieties, including our IPS Hygienic pallets, are available from stock in up to 7 different colours, whilst other products can be produced in special colours, subject to minimum order quantities. We stock our plastic pallet boxes in Blue, Grey, Red, Green and Yellow.

Printing

We offer custom in house printing services for screen-printing pallets and boxes with personalised artwork. Our European partners also offer hot die stamping and logo embossing subject to product and quantity.

Why Go Plastic?

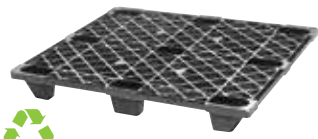
- 100% size and strength consistent
- Long-lasting, an investment for the future
- Recyclable, environmentally friendly
- Safe handling, with no nails or splinters
- No mould or dust contamination issues
- Hygienic, smooth surfaces, free from impurities
- Easily cleaned, impervious to moisture
- Exempt from ISPM15



PALLETS

1200 x 1000

As the UK standard size pallet and generally used worldwide, we offer versions for all types of applications with open or closed decks, on feet or runners, and different weight bearing capacities.



Cabka-IPS CPP 110 PE 9F

A strong yet economic, open deck nestable pallet. The Cabka-IPS CPP 110 PE 9F is a versatile pallet, designed for multiple use across many industries and applications.

Colour	■
External (mm)	1200 x 1000 x 135
Material	HDPE
Weight (KG)	5.5
Static	1600
Dynamic	1000
Racking	N/A



APB 1210 LSO 9F

An open deck, long life nestable pallet suited for export and multi use.

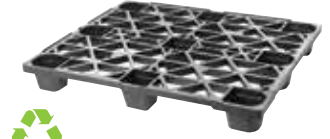
Colour	■
External (mm)	1200 x 1000 x 160
Material	HDPE
Weight (KG)	7
Static	2000
Dynamic	1000
Racking	N/A



APB 1210 Export 9F

A very strong nestable pallet with a closed deck. Offering a long life, this nestable pallet is a great choice for exports or multi use.

Colour	■
External (mm)	1200 x 1000 x 134
Material	HDPE
Weight (KG)	8
Static	3000
Dynamic	1000
Racking	N/A



Cabka-IPS CPP 300 PE 9F

A strong, yet economic, open deck nestable pallet. The Cabka-IPS CPP 300 PE 9F is designed for multiple use across many industries and applications.

Colour	■
External (mm)	1200 x 1000 x 140
Material	HDPE
Weight (KG)	9
Static	4000
Dynamic	1400
Racking	N/A



Cabka-IPS CPP 306 PE 6R

A very strong nestable pallet, with the addition of a 6 runner full perimeter clip on base. The Cabka-IPS CPP 306 PE 6R offers excellent performance across multiple industries and applications.

Colour	■
External (mm)	1200 x 1000 x 150
Material	HDPE
Weight (KG)	14
Static	8000
Dynamic	2000
Racking	600



EXA 1210 6R

A one trip, ultra-low weight pallet with a full perimeter. Designed for export (especially air-freight) where the load is evenly spread.

Colour	■
External (mm)	1200 x 1000 x 120
Material	PP
Weight (KG)	8
Static	2000
Dynamic	1000
Racking	N/A



SF 1210 M3R

A rackable pallet with 3 runners, it's perfect for medium duty applications and exports.

Colour	■
External (mm)	1200 x 1000 x 150
Material	HDPE
Weight (KG)	13.5
Static	4000
Dynamic	1000
Racking	500



SF 1210 M5R

A rackable pallet with 5 runners, it's perfect for medium duty applications and exports.

Colour	■
External (mm)	1200 x 1000 x 150
Material	HDPE
Weight (KG)	14
Static	4000
Dynamic	1000
Racking	500



IPS Medium 1210 Open M3R

This rackable pallet with 3 runners is perfect for medium duty applications and exports.

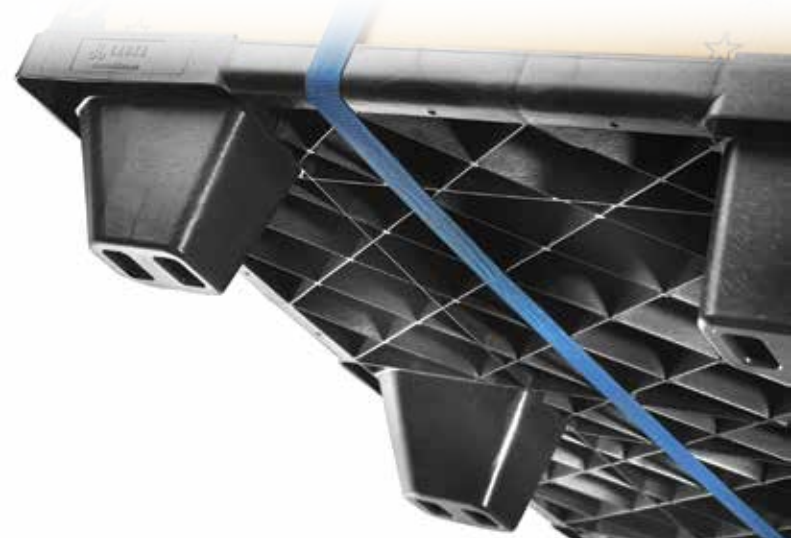
Colour	■
External (mm)	1200 x 1000 x 155
Material	PP
Weight (KG)	14
Static	4000
Dynamic	1500
Racking	750

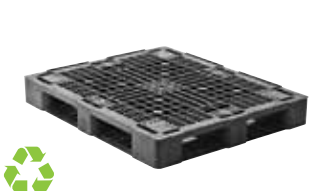


IPS Medium 1210 Open M5R

This rackable pallet with 5 runners is perfect for medium duty applications and exports.

Colour	■
External (mm)	1200 x 1000 x 155
Material	PP
Weight (KG)	15
Static	4000
Dynamic	1500
Racking	750





Qpall 1210 M6R
A medium duty pallet with a full 6 runner base.

Colour	■
External (mm)	1200 x 1000 x 165
Material	Mixed PE
Weight (KG)	15.82
Static	6000
Dynamic	1250
Racking	800



SF 1210 Pool Closed Deck 5R 22mm Lip
A heavy duty, full perimeter pallet, with a closed deck and 22mm lip designed for use with Automotive and Euro crates.

Colour	■
External (mm)	1200 x 1000 x 160
Material	HDPE
Weight (KG)	19.35
Static	5000
Dynamic	1500
Racking	800



APB 1210 Pool Open 3R
A very strong and long lasting pallet, suitable for repeated use.

Colour	■ ■
External (mm)	1200 x 1000 x 160
Material	PP
Weight (KG)	20
Static	5000
Dynamic	2500
Racking	1250



Cabka-IPS CPP 881 PE 3R
A strong and economic, 3 runner medium duty pallet. It offers a good performance across various long term applications.

Colour	■
External (mm)	1200 x 1000 x 150
Material	HDPE
Weight (KG)	20.5
Static	14000
Dynamic	3500
Racking	1000



Qpall 1210 HR 5R
A very strong, heavy duty open deck pallet, for repeated use across all industries.

Colour	■
External (mm)	1200 x 1000 x 160
Material	HDPE
Weight (KG)	20.85
Static	7500
Dynamic	1500
Racking	1000



APB 1210 Pool Closed 3R
A very strong, hygienic and long lasting pallet, suitable for repeated use.

Colour	■
External (mm)	1200 x 1000 x 160
Material	PP
Weight (KG)	21
Static	5000
Dynamic	2500
Racking	1250



APB 1210 Pool Open 5R
A very strong and long lasting pallet, suitable for repeated use.

Colour	■ ■
External (mm)	1200 x 1000 x 160
Material	PP/HDPE
Weight (KG)	21
Static	5000
Dynamic	2500
Racking	1250



Cabka-IPS ER100 NL2 5R
A very strong and long lasting pallet, suitable for high-repeat use and pallet pools.

Colour	■
External (mm)	1200 x 1000 x 165
Material	HDPE
Weight (KG)	22
Static	6000
Dynamic	1200
Racking	1000

PALLETS

1200 x 1000



GPP 1210 HR 6R

A very strong and long lasting pallet, suitable for repeated use.

Colour	■
External (mm)	1200 x 1000 x 165
Material	HDPE
Weight (KG)	22.5
Static	7500
Dynamic	1500
Racking	1000



BPPI9 Beverage Pool Pallet 6R

A heavy duty pallet for the beverage industry, fitted with anti slip strips and grommets.

Colour	■
External (mm)	1200 x 1000 x 169
Material	HDPE
Weight (KG)	23
Static	7000
Dynamic	1500
Racking	1500



APB 1210 Super Pool 5R

A very strong and long lasting pallet, suitable for repeated use.

Colour	■
External (mm)	1200 x 1000 x 165
Material	PP
Weight (KG)	26
Static	6000
Dynamic	3000
Racking	1500



Cabka-IPS ER100L 5R

A full perimeter plastic pallet with best in class racking load.

Colour	■
External (mm)	1200 x 1000 x 165
Material	HDPE
Weight (KG)	28
Static	8000
Dynamic	4000
Racking	2000



APB 1210 Pool Closed 5R

A very strong, hygienic and long lasting pallet, suitable for repeated use.

Colour	■ ■
External (mm)	1200 x 1000 x 160
Material	PP/HDPE
Weight (KG)	22
Static	5000
Dynamic	2500
Racking	1250



IPS Hygienic 1210 9F

A UK-size hygienic pallet on 9 feet, in bold colours and virgin material. The ultimate hygiene pallet.

Colour	■ ■ ■ ■ ■ ■ ■ ■ ■ ■
External (mm)	1200 x 1000 x 160
Material	HPDE
Weight (KG)	21
Static	5000
Dynamic	2500
Racking	N/A



IPS Hygienic 1210 3R

A UK-size hygienic pallet, on 3 runners, in bold colours and virgin material. The ultimate hygiene pallet.

Colour	■ ■ ■ ■ ■ ■ ■ ■ ■ ■
External (mm)	1200 x 1000 x 160
Material	HPDE
Weight (KG)	22
Static	5000
Dynamic	2500
Racking	1250



IPS Hygienic 1210 5R

A UK-size hygienic pallet, on 5 runners, in bold colours and virgin material. The ultimate hygiene pallet.

Colour	■ ■ ■ ■ ■ ■ ■ ■ ■ ■
External (mm)	1200 x 1000 x 160
Material	HPDE
Weight (KG)	23
Static	5000
Dynamic	2500
Racking	1250



PALLETS

1200 x 800

Known as the Euro pallet our 1200 x 800mm pallets are the most popular size in mainland Europe.



APB 1208 LSO 9F

A lightweight, open deck nestable pallet with superb rigidity. This pallet is one of our most popular pallets within the range, particularly for export.

Colour	■
External (mm)	1200 x 800 x 155
Material	HDPE
Weight (KG)	5.6
Static	1500
Dynamic	800
Racking	N/A



Cabka-IPS CPP 790 PE 9F

A strong economic open deck nestable pallet suitable for multiple use across various applications. The Cabka-IPS CPP 790 PE 9F offers both excellent performance and price.

Colour	■
External (mm)	1200 x 800 x 140
Material	HDPE
Weight (KG)	5.5
Static	1600
Dynamic	1000
Racking	N/A



APB 1208 Export 9F

This lightweight, nestable pallet sits on nine feet offering superb rigidity.

Colour	■
External (mm)	1200 x 800 x 140
Material	HDPE
Weight (KG)	8
Static	4000
Dynamic	1000
Racking	N/A



SF 800 H Retail Pallet 9F

A heavy duty, nestable plastic pallet designed to withstand the rigours of a closed loop retail environment.

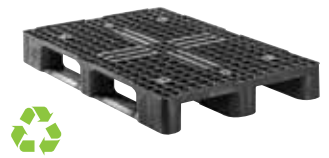
Colour	■
External (mm)	1200 x 800 x 145
Material	HPDE
Weight (KG)	10.5
Static	2000
Dynamic	1000
Racking	N/A



SF 1208 M3R

A medium duty pallet with rounded blocks and runners for improved access for forklift and pallet trucks.

Colour	■
External (mm)	1200 x 800 x 150
Material	HDPE
Weight (KG)	11
Static	4000
Dynamic	1000
Racking	500



Qpall 1208 M3R

A strong and well priced medium duty pallet.

Colour	■
External (mm)	1200 x 800 x 142
Material	HDPE
Weight (KG)	11.46
Static	5000
Dynamic	1250
Racking	500



IPS 1208 M3R Closed

Medium duty closed decked pallet with a high racking load.

Colour	■
External (mm)	1200 x 800 x 150
Material	PP
Weight (KG)	14
Static	3000
Dynamic	1500
Racking	750



PALLETS

1200 x 800



Qpall 1208 HR 3R

A heavy duty, euro-size plastic pallet with a non-perimeter, open deck on three runners. Designed for use in racking, up to 1000kg

Colour	■
External (mm)	1200 x 800 x 156
Material	Recycled Mix
Weight (KG)	16
Static	7500
Dynamic	1750
Racking	1000



Qpall 1208 HR 5R

A heavy duty, full perimeter euro pallet with an open deck. Designed for use in racking holding up to 1000kg.

Colour	■
External (mm)	1200 x 800 x 156
Material	HDPE
Weight (KG)	17.15
Static	7500
Dynamic	1750
Racking	1000



IPS 1208 H1 3R

The H1 pallet is the industry standard in meat and fish environments across Europe.

Colour	■
External (mm)	1200 x 800 x 160
Material	HDPE
Weight (KG)	18
Static	3400
Dynamic	1700
Racking	1000



APB 1208 Pool Closed 3R

A very strong, hygienic and long lasting pallet, with a closed deck and 3 runners. Suitable for repeated use.

Colour	■
External (mm)	1200 x 800 x 157
Material	PP
Weight (KG)	18
Static	4000
Dynamic	2000
Racking	1000



APB 1208 Pool Open 3R

A very strong and long lasting pallet, suitable for repeated use.

Colour	■
External (mm)	1200 x 800 x 157
Material	PP
Weight (KG)	18
Static	4000
Dynamic	2000
Racking	1000



IPS Hygienic 1208 9F

A euro-size hygienic pallet on 9 feet, in bold colours and virgin material. The ultimate hygiene pallet.

Colour	■ ■ ■ ■ ■ ■
External (mm)	1200 x 800 x 155
Material	HPDE
Weight (KG)	17
Static	4000
Dynamic	1000
Racking	N/A



IPS Hygienic 1208 3R

A euro-size hygienic pallet on 3 runners, in bold colours and virgin material. The ultimate hygiene pallet.

Colour	■ ■ ■ ■ ■ ■
External (mm)	1200 x 800 x 155
Material	HPDE
Weight (KG)	18
Static	4000
Dynamic	2000
Racking	1000



Cabka-IPS CPP 888 PE 3R

A competitively priced heavy duty non perimeter pallet, fully optimised for multiple use applications with a good performance in racking systems.

Colour	■
External (mm)	1200 x 800 x 160
Material	HDPE
Weight (KG)	18.5
Static	14000
Dynamic	3500
Racking	1000



PALLETS

400 x 300 | 600 x 400 | 800 x 600

Our range of half, quarter and one eighth Euro pallets are ideal for point of sale displays in retail stores and are also popular with exporters who ship small consignments.



Cabka-IPS Nest M1 4F
A nestable one-eighth pallet designed for display positioning at the point-of-sale (POS). Our smallest and the first one-eighth size pallet in the market.

Colour	■
External (mm)	400 x 300 x 140
Material	HDPE
Weight (KG)	0.75
Static	60
Dynamic	30
Racking	N/A



Cabka-IPS CPP 090 PE 4F
A nestable 600 x 400 display pallet. Ideal for Point Of Sale.

Colour	■
External (mm)	600 x 400 x 140
Material	HDPE
Weight (KG)	1.1
Static	800
Dynamic	250
Racking	N/A



Qpall 6040L 4F
A nestable 600 x 400 display pallet. Ideal for Point Of Sale.

Colour	■
External (mm)	600 x 400 x 139
Material	PP
Weight (KG)	1.7
Static	800
Dynamic	250
Racking	N/A



SF 400L 4F
A nestable 600 x 400 display pallet. Ideal for Point Of Sale.

Colour	■
External (mm)	600 x 400 x 115
Material	PP
Weight (KG)	1.75
Static	600
Dynamic	300
Racking	N/A



SF 600 UL Open Deck 6F
A nestable open decked 800 x 600 display pallet. Ideal for Point Of Sale.

Colour	■
External (mm)	800 x 600 x 130
Material	HDPE
Weight (KG)	2.8
Static	700
Dynamic	350
Racking	N/A



Cabka-IPS CPP 200 PE 6F
A nestable 800 x 600 display pallet. Ideal for Point Of Sale.

Colour	■
External (mm)	800 x 600 x 130
Material	HDPE
Weight (KG)	3.5
Static	2500
Dynamic	1000
Racking	N/A



Qpall 6080L 6F
A lightweight and strong nestable, 800 x 600 pallet.

Colour	■
External (mm)	800 x 600 x 143
Material	HDPE
Weight (KG)	3.14
Static	1000
Dynamic	500
Racking	N/A



SF 600 UL Closed Deck 6F
A nestable closed decked 800 x 600 display pallet. Ideal for Point Of Sale.

Colour	■
External (mm)	800 x 600 x 130
Material	HDPE
Weight (KG)	3.4
Static	700
Dynamic	350
Racking	N/A



APB 6080 LSO 6F
A half-euro sized nestable pallet. Provides a combination of strength and weight.

Colour	■
External (mm)	800 x 600 x 150
Material	HDPE
Weight (KG)	3.8
Static	800
Dynamic	400
Racking	N/A

PALLETS

400 x 300 | 600 x 400 | 800 x 600



Qpall 6080 OD 6F

A medium duty and strong nestable, 800 x 600 pallet.

Colour	■
External (mm)	800 x 600 x 155
Material	HDPE
Weight (KG)	5.7
Static	1000
Dynamic	600
Racking	N/A



APB 6080 Pool 3R

A very strong and long lasting pallet, suitable for repeated use.

Colour	■
External (mm)	800 x 600 x 160
Material	PP
Weight (KG)	8
Static	2000
Dynamic	1000
Racking	500



SF 6080 Pool Closed Deck 3R

A strong and robust, half-euro, heavy duty pool pallet with a closed deck.

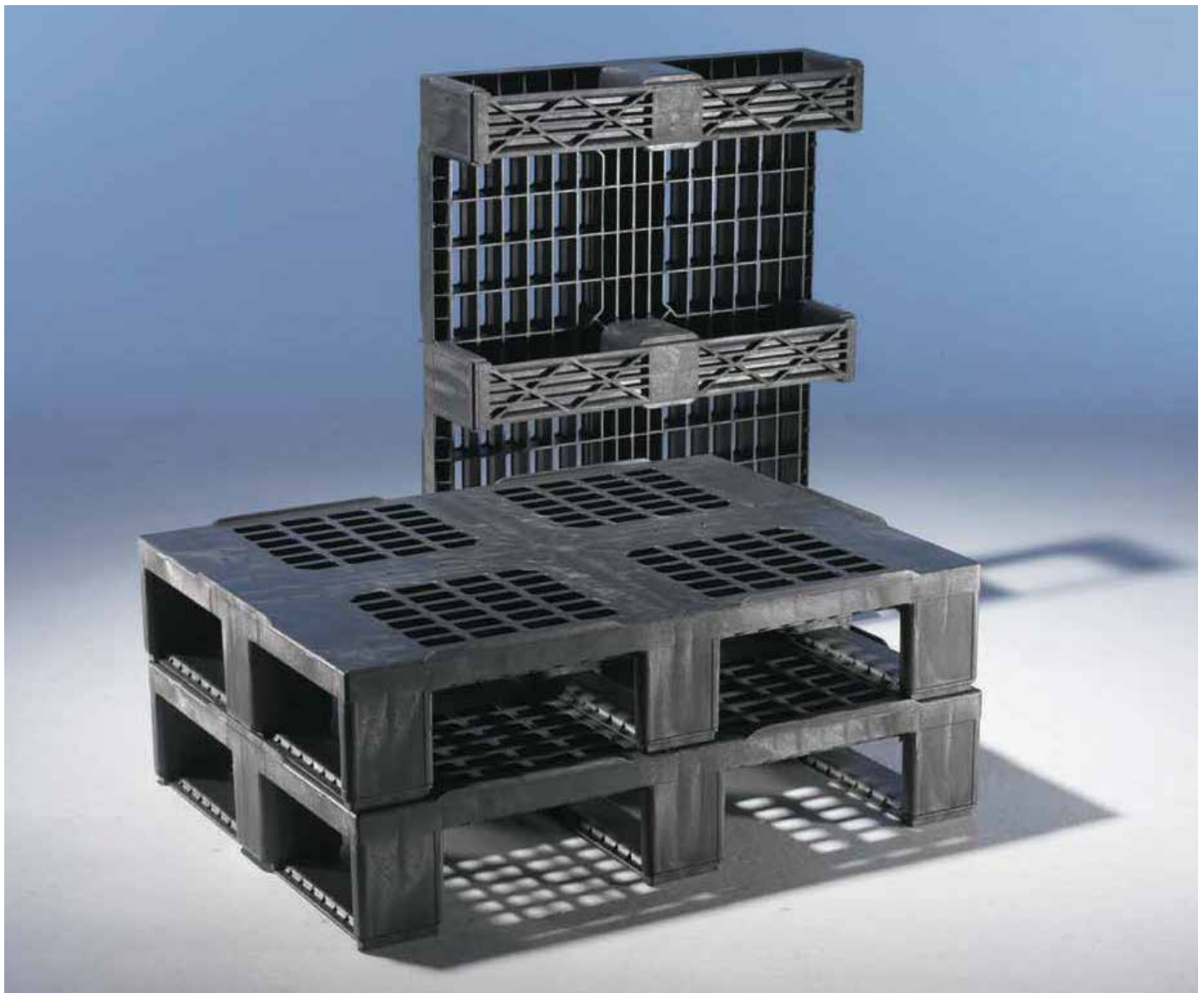
Colour	■
External (mm)	800 x 600 x 160
Material	HDPE
Weight (KG)	8.9
Static	2000
Dynamic	1000
Racking	500



SF 6080 Pool Open Deck 3R

A strong and robust, half-euro, heavy duty pool pallet with an open deck.

Colour	■
External (mm)	800 x 600 x 160
Material	HDPE
Weight (KG)	8.2
Static	2000
Dynamic	1000
Racking	500



PALLETS

1140 x 1140

These square pallets are popular with exporters shipping overseas in 20 and 40ft ISO containers – the pallets fit evenly side by side, maximising the available space.



Qpall 1140 L 9F
lightweight nestable pallet designed to fit perfectly in sea containers.

Colour	■
External (mm)	1140 x 1140 x 150
Material	HDPE
Weight (KG)	7.53
Static	2000
Dynamic	1000
Racking	N/A



Qpall 1140 M3R
A medium duty 3 runner pallet, designed for use within sea containers and with barrels.

Colour	■
External (mm)	1140 x 1140 x 156
Material	Mixed PE
Weight (KG)	15.08
Static	7500
Dynamic	1375
Racking	200



Qpall 1140 M6R
A medium duty 6 runner pallet, designed for use within sea containers and with barrels.

Colour	■
External (mm)	1140 x 1140 x 156
Material	Mixed PE
Weight (KG)	16.95
Static	7500
Dynamic	1375
Racking	350



APB 1140 Pool Open 6R
A heavy duty, full perimeter pallet with an open deck. Designed for high loads across all industries.

Colour	■
External (mm)	1140 x 1140 x 165
Material	PP
Weight (KG)	25.5
Static	5000
Dynamic	2500
Racking	1250



Qpall 1140 HR 6R
A heavy duty, full perimeter pallet with an open deck. Designed for high loads across all industries.

Colour	■
External (mm)	1140 x 1140 x 170
Material	HDPE
Weight (KG)	26
Static	7500
Dynamic	1500
Racking	1000



APB 1140 Pool Closed 6R
A heavy duty, full perimeter pallet with a closed deck. Designed for high loads across all industries.

Colour	■
External (mm)	1140 x 1140 x 165
Material	PP
Weight (KG)	26
Static	5000
Dynamic	2500
Racking	1250



PALLETS

1200 x 1200

1200 x 900 | 1300 x 1100 | 1400x 1400



Qpall 1212 L 9F

A lightweight, "square" nestable pallet, suitable for multi-use applications.

Colour	■
External (mm)	1200 x 1200 x 150
Material	HDPE
Weight (KG)	8.29
Static	2000
Dynamic	1000
Racking	N/A



Qpall 1212 M3R

A medium duty pallet, with an open, 30mm winged deck, specifically designed for barrel storage and movement.

Colour	■
External (mm)	1200 x 1200 x 156
Material	HDPE
Weight (KG)	15.82
Static	7500
Dynamic	1375
Racking	250



Qpall 1212 M6R

A medium duty pallet, with an open, 30mm winged deck, specifically designed for barrel storage and movement.

Colour	■
External (mm)	1200 x 1200 x 156
Material	HDPE
Weight (KG)	17.6
Static	7500
Dynamic	1375
Racking	600



Qpall 1212 HR 6R

A heavy duty, full perimeter pallet with an open deck, for high loads across all industries.

Colour	■
External (mm)	1200 x 1200 x 170
Material	HDPE
Weight (KG)	27
Static	7500
Dynamic	1500
Racking	1250



APB 1212 Pool Open 6R

Robust, heavy duty square pallet on 6 runners, ideal for bulk storage and distribution including large drums and bulk bags.

Colour	■
External (mm)	1200 x 1200 x 165
Material	PP
Weight (KG)	27
Static	5000
Dynamic	2500
Racking	1250



APB 1212 Pool Closed 6R

Robust, heavy duty square pallet on 6 runners, ideal for bulk storage and distribution including large drums and bulk bags.

Colour	■
External (mm)	1200 x 1200 x 165
Material	PP
Weight (KG)	27.5
Static	5000
Dynamic	2500
Racking	1250



Qpall 1209 HR 3R

A heavy duty, full perimeter pallet sitting on 3 runners. It has an open deck and 50mm wings on both 1200mm sides.

Colour	■
External (mm)	1200 x 900 x 156
Material	HDPE
Weight (KG)	17.45
Static	7500
Dynamic	1500
Racking	1000



Qpall 1209 HR 5R

A heavy duty, full perimeter pallet sitting on 5 runners. It has an open deck and 50mm wings on both 1200mm sides.

Colour	■
External (mm)	1200 x 900 x 156
Material	HDPE
Weight (KG)	18.9
Static	7500
Dynamic	1500
Racking	1000



Qpall 1311 HR 6R

A special size heavy duty, full perimeter pallet with an open deck. Well suited for high loads across all industries.

Colour	■
External (mm)	1300 x 1100 x 165
Material	HDPE
Weight (KG)	25.5
Static	7500
Dynamic	1500
Racking	1000



APB 1414 L 2R

Specifically designed for the transport and storage of extra-large packages.

Colour	■
External (mm)	1400 x 1400 x 155
Material	HDPE
Weight (KG)	22
Static	2000
Dynamic	500
Racking	250

PLASTIC PALLET BOXES

Rigid Pallet Boxes

Perfect for heavy duty applications our Rigid Pallet Boxes are available with solid or ventilated base/sides, and on 4 feet or 3 and 2 runner configurations.



GoPalletBox 1060 Lid

A 1000 x 600 Pallet Box Lid.

Colour	■
External (mm)	1000 x 600
Internal (mm)	N/A
Material	HDPE
Weight (KG)	4.5
Litres	N/A
Pallet Size	1200 x 1000
Units Per Stack	60
Max load per box (KG)	N/A
Static	N/A
Dynamic	N/A
Racking	N/A

GoPalletBox 1208 Lid

A 1200 x 800 Pallet Box Lid.

Colour	■
External (mm)	1200 x 800 x 60
Internal (mm)	N/A
Material	HDPE
Weight (KG)	6.5
Litres	N/A
Pallet Size	1200 x 800
Units Per Stack	30
Max load per box (KG)	N/A
Static	N/A
Dynamic	N/A
Racking	N/A

GoPalletBox 1210 Lid

A 1200 x 1000 Pallet Box lid.

Colour	■
External (mm)	1200x1000 x 60
Internal (mm)	N/A
Material	HDPE
Weight (KG)	7.8
Litres	N/A
Pallet Size	1200 x 1000
Units Per Stack	50
Max load per box (KG)	N/A
Static	N/A
Dynamic	N/A
Racking	N/A

GoPalletBox 1311 LID

A 1300 x 1150 Pallet Box lid.

Colour	■
External (mm)	1300 x 1150 x 1250
Internal (mm)	N/A
Material	HDPE
Weight (KG)	9
Litres	N/A
Pallet Size	1300 x 1150
Units Per Stack	30
Max load per box (KG)	N/A
Static	N/A
Dynamic	N/A
Racking	N/A



The essential returnable, reusable bulk container

Introducing the Multitank™ container, a 400 litre, 1000 x 800mm, IBC container designed to package, store and transport food products and liquids in bulk without the need of an extra liner bag.

WINNER Sustainable Packaging Awards 2017

- ✓ Returnable – durable design, can be used repeatedly
- ✓ Watertight & Airtight – 3 different lids, exceptional sealing
- ✓ Stackable – saves 75% storage space
- ✓ Nestable when empty – increases vehicle fill
- ✓ Sustainable – eliminates packaging waste

+44 (0)1323 744057 | goplasticpallets.com



GoPalletBox 1060S 4F

A 300 litre Solid Pallet Box.

Colour	■
External (mm)	1000 x 635 x 645
Internal (mm)	925 x 580 x 520
Material	HDPE
Weight (KG)	12
Litres	300
Pallet Size	1200 x 1000
Units Per Stack	6
Max load per box (KG)	150
Static	900
Dynamic	300
Racking	N/A

GoPalletBox 1060S 4C

A 300 litre Solid Pallet Box with Castors.

Colour	■
External (mm)	1000 x 635 x 745
Internal (mm)	925 x 580 x 520
Material	HDPE
Weight (KG)	14
Litres	300
Pallet Size	1200 x 1000
Units Per Stack	4
Max load per box (KG)	150
Static	150
Dynamic	N/A
Racking	N/A

PLASTIC PALLET BOXES

Rigid Pallet Boxes

For
Box Lids
please see
page 13



GoPalletBox 1208S 4F

A 525 litre Pallet Box on 4 feet.

Colour	■
External (mm)	1200 x 800 x 800
Internal (mm)	1118 x 718 x 646
Material	HDPE
Weight (KG)	31
Litres	525
Pallet Size	1200 x 800
Units Per Stack	3
Max load per box (KG)	400
Static	4000
Dynamic	1200
Racking	N/A

GoPalletBox 1208S 2R

A 525 litre Pallet Box with 2 runners.

Colour	■
External (mm)	1200 x 800 x 800
Internal (mm)	1118 x 718 x 646
Material	HDPE
Weight (KG)	32.2
Litres	525
Pallet Size	1200 x 800
Units Per Stack	3
Max load per box (KG)	400
Static	4000
Dynamic	1200
Racking	N/A

GoPalletBox 1208S 4C

A 525 litre Pallet Box on 4 castors.

Colour	■
External (mm)	1200 x 800 x 955
Internal (mm)	1118 x 718 x 646
Material	HDPE
Weight (KG)	33
Litres	525
Pallet Size	1200 x 800
Units Per Stack	2
Max load per box (KG)	280
Static	280
Dynamic	280
Racking	N/A

GoPalletBox 1210LS 2R

A 400 litre Pallet Box on 2 runners.

Colour	■
External (mm)	1200 x 1000 x 580
Internal (mm)	1120 x 920 x 420
Material	HDPE
Weight (KG)	27.9
Litres	400
Pallet Size	1200 x 1000
Units Per Stack	4
Max load per box (KG)	320
Static	3520
Dynamic	1280
Racking	N/A

PLASTIC PALLET BOXES

Rigid Pallet Boxes



GoPalletBox 1210S 4F

A 610 litre Pallet Box on 4 feet.

Colour	■ ■
External (mm)	1200 x 1000 x 760
Internal (mm)	1120 x 920 x 610
Material	HDPE
Weight (KG)	31.72
Litres	610
Pallet Size	1200 x 1000
Units Per Stack	4
Max load per box (KG)	450
Static	4500
Dynamic	1350
Racking	N/A



GoPalletBox 1210P 3R

A 610 litre perforated Pallet Box on 3 runners.

Colour	■
External (mm)	1200 x 1000 x 760
Internal (mm)	1120 x 920 x 610
Material	HDPE
Weight (KG)	35.78
Litres	610
Pallet Size	1200 x 1000
Units Per Stack	4
Max load per box (KG)	450
Static	4500
Dynamic	1350
Racking	N/A



GoPalletBox 1210S 3R

A 610 litre Pallet Box on 3 runners.

Colour	■ ■ ■ ■ ■
External (mm)	1200 x 1000 x 760
Internal (mm)	1120 x 920 x 610
Material	HDPE
Weight (KG)	35.88
Litres	610
Pallet Size	1200 x 1000
Units Per Stack	4
Max load per box (KG)	450
Static	4500
Dynamic	1350
Racking	N/A



GoPalletBox 1210S 4C

A 610 litre Pallet Box on 4 castors.

Colour	■ ■
External (mm)	1200 x 1000 x 915
Internal (mm)	1110 x 910 x 610
Material	HDPE
Weight (KG)	39
Litres	610
Pallet Size	1200 x 1000
Units Per Stack	2
Max load per box (KG)	300
Static	300
Dynamic	300
Racking	N/A



GoPalletBox 1311P 3R

A 1400 litre perforated Pallet Box on 3 runners.

Colour	■ ■ ■ ■ ■
External (mm)	1300 x 1150 x 1250
Internal (mm)	1250 x 1100 x 1100
Material	HDPE
Weight (KG)	68.5
Litres	1400
Pallet Size	1300 x 1150
Units Per Stack	2
Max load per box (KG)	1000
Static	7000
Dynamic	2000
Racking	1000



GoPalletBox 1311S 3R

A 1400 litre Pallet Box on 3 runners.

Colour	■ ■ ■ ■ ■ ■
External (mm)	1300 x 1150 x 1250
Internal (mm)	1250 x 1100 x 1100
Material	HDPE
Weight (KG)	71
Litres	1400
Pallet Size	1300 x 1150
Units Per Stack	2
Max load per box (KG)	1000
Static	7000
Dynamic	2000
Racking	1000



PLASTIC PALLET BOXES

Folding Large Containers

Ideal for industrial supply chains these containers fold flat, saving space on return journeys and when being stored empty in a warehouse.



6080 Pallet Collar

A 800 x 600 Pallet Collar.

Colour	■
External (mm)	800 x 600 x 300
Internal (mm)	N/A
Material	PP/PVC
Weight (KG)	5.8
Litres	N/A
Units Per Stack	32
Max load per box (KG)	N/A
Static	500
Dynamic	300
Racking	N/A



1208 Pallet Collar

A 1200 x 800 Pallet Collar.

Colour	■
External (mm)	1200 x 800 x 330
Internal (mm)	N/A
Material	PP/PVC
Weight (KG)	8
Litres	N/A
Units Per Stack	32
Max load per box (KG)	N/A
Static	500
Dynamic	300
Racking	N/A



1210 Pallet Collar

A 1200 x 1000 Pallet Collar.

Colour	■
External (mm)	1200 x 1000 x 330
Internal (mm)	N/A
Material	PP/PVC
Weight (KG)	8.5
Litres	N/A
Units Per Stack	32
Max load per box (KG)	N/A
Static	500
Dynamic	300
Racking	N/A



1208 Hygienic Low 3R

A 640 litre Pallet Box on 3 runners, with 100% closed deck and perfectly smooth sealed pallet base.

Colour	■
External (mm)	1200 x 800 x 940
Internal (mm)	1160 x 760 x 730
Material	HDPE/PP
Weight (KG)	30.7
Litres	640
Units Per Stack	10
Max load per box (KG)	600
Static	600
Dynamic	600
Racking	600



1208 Hygienic High 3R

A 870 litre Pallet Box on 3 runners, with 100% closed deck and perfectly smooth sealed pallet base.

Colour	■
External (mm)	1200 x 800 x 1195
Internal (mm)	1160 x 760 x 985
Material	HDPE/PP
Weight (KG)	33.4
Litres	870
Units Per Stack	10
Max load per box (KG)	600
Static	600
Dynamic	600
Racking	600



1210 Hygienic Low 5R

A 860 litre Pallet Box on 5 runners, with 100% closed deck and perfectly smooth sealed pallet base.

Colour	■
External (mm)	1200 x 1000 x 940
Internal (mm)	1160 x 960 x 730
Material	HDPE/PP
Weight (KG)	37.7
Litres	810
Units Per Stack	10
Max load per box (KG)	600
Static	600
Dynamic	600
Racking	600



1210 Hygienic High 5R

A 1100 litre Pallet Box on 5 runners, with 100% closed deck and perfectly smooth sealed pallet base.

Colour	■
External (mm)	1200 x 1000 x 1200
Internal (mm)	1160 x 960 x 990
Material	HDPE/PP
Weight (KG)	40.7
Litres	1100
Units Per Stack	10
Max load per box (KG)	600
Static	600
Dynamic	600
Racking	600



6080 Trip Box 6F

A 201 litre Sleeve Pack Box.

Colour	■ ■
External (mm)	820 x 620 x 635
Internal (mm)	762 x 562 x 471
Material	HDPE/PP
Weight (KG)	11
Litres	201
Units Per Stack	20
Max load per box (KG)	350
Static	700
Dynamic	350
Racking	N/A



1208 Trip Box 3R

A 630 litre Sleeve Pack Box.

Colour	■ ■
External (mm)	1220 x 820 x 928
Internal (mm)	1142 x 742 x 743
Material	HDPE/PP
Weight (KG)	23.29
Litres	630
Units Per Stack	10
Max load per box (KG)	500
Static	1500
Dynamic	1000
Racking	400



1210 Trip Box 5R

An 815 litre Sleeve Pack Box.

Colour	■ ■
External (mm)	1227 x 1027 x 965
Internal (mm)	1142 x 942 x 758
Material	HDPE/PP
Weight (KG)	33
Litres	815
Units Per Stack	10
Max load per box (KG)	500
Static	1500
Dynamic	1000
Racking	500



CabCube 1210 9F 1.0

An 875 litre Sleeve Pack Box with heavy duty, injection moulded base and lid.

Colour	■ ■
External (mm)	1210 x 1010 x 990
Internal (mm)	1140 x 940 x 816
Material	HDPE/PP
Weight (KG)	39
Litres	875
Units Per Stack	10
Max load per box (KG)	500
Static	1500
Dynamic	1000
Racking	N/A



CabCube 1210 9F 2.0

An 875 litre Sleeve Pack Box with heavy duty, injection moulded base and lid.

Colour	■ ■
External (mm)	1210 x 1010 x 990
Internal (mm)	1140 x 940 x 816
Material	HDPE/PP
Weight (KG)	39
Litres	875
Units Per Stack	10
Max load per box (KG)	500
Static	1500
Dynamic	1000
Racking	N/A



GoFLC 975-2

A folding pallet container for long lasting performance in the most demanding environments. Optional lid available, see page 13.

Colour	■ ■
External (mm)	1200 x 1000 x 975
Internal (mm)	1110 x 910 x 790
Material	HDPE
Weight (KG)	57
Litres	800
Units Per Stack	6
Max load per box (KG)	1000
Static	4000
Dynamic	1000
Racking	500



GoTripBox 1208 Ultimate 3R

A 1200 x 800 Sleeve Pack with locking catches securing the sleeve and lid in place.

Colour	■ ■
External (mm)	1200 x 800 x 850
Internal (mm)	1127 x 727 x 630
Material	HDPE / PP
Weight (KG)	32.5
Litres	516
Units Per Stack	8
Max load per box (KG)	500
Static	1500
Dynamic	1000
Racking	500



SMALL CONTAINERS BUYERS GUIDE



We stock a comprehensive range of small containers, crates and trays as well as a versatile selection of lids and transport dollies.

To help you find the product best suited to your application, this useful Buyers Guide includes information about different materials, uses and personalisation options.

Materials

Our small plastic containers are manufactured from high density polyethylene (HDPE) or polypropylene (PP). Other bespoke materials are available depending on your requirements. The specification will depend upon the proposed application.

Solid or Perforated Side Walls

Many of our small plastic containers come with the option of solid or perforated side walls. Solid sides offer maximum strength and rigidity, where perforated sides offer excellent ventilation – popular for grocery applications. Both types can be easily cleaned.

Stack, Nest, Fold

Stacking boxes, like our Euro Box Range, have straight sided walls that give a good internal capacity and a very positive stack location.

Nesting and stacking boxes come in two main designs – a 180 degree turn or a bale arm design.

Folding boxes have excellent square internal volume. As they can fold virtually flat, they offer valuable space and cost savings when not in use.

Printing

We offer three main printing styles for effectively customising boxes: hot die stamping; screen printing; and the logo plate.

Label Holders

Some of our small plastic containers offer the option of label holders. Our standard label holder is manufactured from durable clear polycarbonate and attaches to most containers using industrial adhesive tape.

Ticket Clips

Alternatively we offer ticket clips, which are manufactured from strong and durable metal and attach to the rib that is found on most containers. We do not recommend metal clips for hygienic applications.

Key

Code & Description	
P	Perforated
S	Solid
OF	Open Fronted
H	Hinge
SH	Solid & Handholes
SL	Solid with Lid
PH	Perforated & Handholes

Example

The codes are located at the end of each product reference code – highlighted in orange.



GoEuro 321205

European Standard Stacking Container

SMALL CONTAINERS

Euro Box Range

Ideal for all industrial applications our Euro boxes offer stable stacking and effective product protection in storage and distribution.

*Colour available subject to quantity.



GoEuro 32120S

European Standard Stacking Container

Colour	■
External (mm)	300 x 200 x 120
Internal (mm)	260 x 160 x 110
Material	PP
Weight (KG)	0.38
Litres	5
Units Per Pallet	288



GoEuro 4370S

European Standard Stacking Container

Colour	■
External (mm)	400 x 300 x 70
Internal (mm)	356 x 256 x 60
Material	PP
Weight (KG)	0.62
Litres	6
Units Per Pallet	256



GoEuro 43120S

European Standard Stacking Container

Colour*	■ ■ ■ ■ ■ ■ ■ ■ ■ ■
External (mm)	400 x 300 x 120
Internal (mm)	356 x 256 x 110
Material	PP
Weight (KG)	0.765
Litres	10
Units Per Pallet	144



GoEuro 43170S

European Standard Stacking Container

Colour*	■ ■ ■ ■ ■ ■ ■ ■ ■ ■
External (mm)	400 x 300 x 170
Internal (mm)	356 x 256 x 160
Material	PP
Weight (KG)	0.965
Litres	15
Units Per Pallet	96



GoEuro 43220P

European Standard Stacking Container

Colour	■
External (mm)	400 x 300 x 220
Internal (mm)	357 x 255 x 202
Material	PP
Weight (KG)	0.92
Litres	20
Units Per Pallet	104



GoEuro 43220S

European Standard Stacking Container

Colour*	■ ■ ■ ■ ■ ■ ■ ■ ■ ■
External (mm)	400 x 300 x 220
Internal (mm)	356 x 256 x 211
Material	PP
Weight (KG)	0.96
Litres	20
Units Per Pallet	104



GoEuro 43240S

European Standard Stacking Container

Colour	■
External (mm)	400 x 300 x 240
Internal (mm)	356 x 256 x 237
Material	PP
Weight (KG)	1.25
Litres	22
Units Per Pallet	104



GoEuro 43275S

European Standard Stacking Container

Colour	■
External (mm)	400 x 300 x 275
Internal (mm)	356 x 256 x 250
Material	PP
Weight (KG)	1.384
Litres	25
Units Per Pallet	56



GoEuro 43320SOF

European Standard Stacking Container

Colour	■
External (mm)	400 x 300 x 320
Internal (mm)	355 x 255 x 310
Material	PP
Weight (KG)	1.4
Litres	30
Units Per Pallet	56



GoEuro 43325S

European Standard Stacking Container

Colour*	■ ■ ■ ■ ■ ■ ■ ■ ■ ■
External (mm)	400 x 300 x 325
Internal (mm)	356 x 256 x 297
Material	PP
Weight (KG)	1.75
Litres	30
Units Per Pallet	56



GoEuro 43360S

European Standard Stacking Container

Colour	■
External (mm)	400 x 300 x 360
Internal (mm)	356 x 256 x 332
Material	PP
Weight (KG)	1.86
Litres	35
Units Per Pallet	48



GoEuro 6450P

European Standard Stacking Container

Colour	■
External (mm)	600 x 400 x 50
Internal (mm)	555 x 355 x 31
Material	PP
Weight (KG)	0.805
Litres	8
Units Per Pallet	160

SMALL CONTAINERS

Euro Box Range

*Colour available subject to quantity.



GoEuro 6450S

European Standard Stacking Container

Colour	■
External (mm)	600 x 400 x 50
Internal (mm)	555 x 355 x 40
Material	PP
Weight (KG)	0.87
Litres	8
Units Per Pallet	160



GoEuro 6470P

European Standard Stacking Container

Colour	■
External (mm)	600 x 400 x 70
Internal (mm)	555 x 355 x 60
Material	PP
Weight (KG)	0.995
Litres	12.5
Units Per Pallet	136



GoEuro 6480P

European Standard Stacking Container

Colour	■
External (mm)	600 x 400 x 80
Internal (mm)	560 x 360 x 62
Material	PP
Weight (KG)	1.03
Litres	15
Units Per Pallet	100



GoEuro 6480S

European Standard Stacking Container

Colour	■
External (mm)	600 x 400 x 80
Internal (mm)	558 x 357 x 69
Material	PP
Weight (KG)	1.15
Litres	15
Units Per Pallet	100



GoEuro 64120S

European Standard Stacking Container

Colour*	■ ■ ■ ■ ■ ■
External (mm)	600 x 400 x 120
Internal (mm)	555 x 355 x 105
Material	PP
Weight (KG)	1.092
Litres	20
Units Per Pallet	72



GoEuro 64120P

European Standard Stacking Container

Colour	■
External (mm)	600 x 400 x 120
Internal (mm)	555 x 358 x 94
Material	PP
Weight (KG)	1.07
Litres	20
Units Per Pallet	72



GoEuro 64150P

European Standard Stacking Container

Colour	■
External (mm)	600 x 400 x 150
Internal (mm)	555 x 355 x 125
Material	PP
Weight (KG)	1.32
Litres	27
Units Per Pallet	56



GoEuro 64150S

European Standard Stacking Container

Colour	■
External (mm)	600 x 400 x 150
Internal (mm)	560 x 355 x 138
Material	PP
Weight (KG)	1.59
Litres	27
Units Per Pallet	56



GoEuro 64170P

European Standard Stacking Container

Colour	■
External (mm)	600 x 400 x 170
Internal (mm)	555 x 355 x 145
Material	PP
Weight (KG)	1.42
Litres	30
Units Per Pallet	52



GoEuro 64170S

European Standard Stacking Container

Colour*	■ ■ ■ ■ ■ ■
External (mm)	600 x 400 x 170
Internal (mm)	560 x 360 x 157
Material	PP
Weight (KG)	1.69
Litres	30
Units Per Pallet	52



GoEuro 64200P

European Standard Stacking Container

Colour	■
External (mm)	600 x 400 x 200
Internal (mm)	555 x 355 x 187
Material	PP
Weight (KG)	1.69
Litres	40
Units Per Pallet	44



GoEuro 64220S

European Standard Stacking Container

Colour	■
External (mm)	600 x 400 x 220
Internal (mm)	555 x 355 x 215
Material	PP
Weight (KG)	1.79
Litres	42
Units Per Pallet	40

SMALL CONTAINERS

Euro Box Range

*Colour available subject to quantity.



GoEuro 64200S

European Standard Stacking Container

Colour*	■ ■ ■ ■ ■ ■
External (mm)	600 x 400 x 200
Internal (mm)	555 x 355 x 184
Material	PP
Weight (KG)	1.84
Litres	40
Units Per Pallet	44



GoEuro 64240S

European Standard Stacking Container

Colour*	■ ■
External (mm)	600 x 400 x 240
Internal (mm)	555 x 355 x 235
Material	PP
Weight (KG)	1.79
Litres	47
Units Per Pallet	32



GoEuro 64240P

European Standard Stacking Container

Colour	■
External (mm)	600 x 400 x 240
Internal (mm)	555 x 355 x 213
Material	PP
Weight (KG)	1.84
Litres	47
Units Per Pallet	32



GoEuro 64270P

European Standard Stacking Container

Colour	■
External (mm)	600 x 400 x 270
Internal (mm)	555 x 352 x 242
Material	PP
Weight (KG)	1.87
Litres	52
Units Per Pallet	32



GoEuro 64270S

European Standard Stacking Container

Colour	■
External (mm)	600 x 400 x 270
Internal (mm)	555 x 355 x 265
Material	PP
Weight (KG)	2
Litres	52
Units Per Pallet	32



GoEuro 64290P

European Standard Stacking Container

Colour	■
External (mm)	600 x 400 x 290
Internal (mm)	555 x 355 x 265
Material	PP
Weight (KG)	2.08
Litres	55
Units Per Pallet	28



GoEuro 64290S

European Standard Stacking Container

Colour	■
External (mm)	600 x 400 x 290
Internal (mm)	555 x 355 x 285
Material	PP
Weight (KG)	2.11
Litres	55
Units Per Pallet	28



GoEuro 64320POF

European Standard Stacking Container

Colour	■
External (mm)	600 x 400 x 320
Internal (mm)	555 x 355 x 293
Material	PP
Weight (KG)	2.2
Litres	60
Units Per Pallet	36



GoEuro 64320S

European Standard Stacking Container

Colour*	■ ■ ■ ■ ■ ■
External (mm)	600 x 400 x 320
Internal (mm)	552 x 353 x 304
Material	PP
Weight (KG)	2.3
Litres	60
Units Per Pallet	36



GoEuro 64320P

European Standard Stacking Container

Colour	■
External (mm)	600 x 400 x 320
Internal (mm)	555 x 355 x 315
Material	PP
Weight (KG)	2.4
Litres	60
Units Per Pallet	36



GoEuro 64400S

European Standard Stacking Container

Colour*	■ ■
External (mm)	600 x 400 x 400
Internal (mm)	550 x 355 x 395
Material	PP
Weight (KG)	3.17
Litres	76
Units Per Pallet	20



GoEuro 86120S

European Standard Stacking Container

Colour	■
External (mm)	800 x 600 x 120
Internal (mm)	750 x 550 x 100
Material	PP
Weight (KG)	3
Litres	45
Units Per Pallet	44

SMALL CONTAINERS

Euro Box Range

*Colour available subject to quantity.



GoEuro 86230S

European Standard Stacking Container

Colour	■
External (mm)	800 x 600 x 230
Internal (mm)	755 x 555 x 205
Material	PP
Weight (KG)	3.85
Litres	87
Units Per Pallet	8



GoEuro 86340S

European Standard Stacking Container

Colour	■
External (mm)	800 x 600 x 340
Internal (mm)	756 x 562 x 320
Material	PP
Weight (KG)	5.22
Litres	140
Units Per Pallet	12



GoEuro 86450S

European Standard Stacking Container

Colour	■
External (mm)	800 x 600 x 450
Internal (mm)	756 x 562 x 430
Material	PP
Weight (KG)	6.25
Litres	186
Units Per Pallet	10



GoEuro 103214S

European Standard Stacking Container

Colour	■
External (mm)	995 x 297 x 214
Internal (mm)	961 x 263 x 194
Material	PP
Weight (KG)	2
Litres	49
Units Per Pallet	40



GoEuro 104120S

European Standard Stacking Container

Colour	■
External (mm)	1000 x 400 x 120
Internal (mm)	963 x 365 x 97
Material	PP
Weight (KG)	2.465
Litres	34
Units Per Pallet	60



GoEuro 104230S

European Standard Stacking Container

Colour	■
External (mm)	1000 x 400 x 230
Internal (mm)	963 x 365 x 208
Material	PP
Weight (KG)	3.32
Litres	72
Units Per Pallet	30

SMALL CONTAINERS

Automotive Range

Developed specifically for the storage and distribution of car parts our Automotive KLT containers conform to Europe's VDA standards.



RL-KLT 3147

Automotive standard stacking box

Colour	■
External (mm)	300 x 200 x 147
Internal (mm)	243 x 162 x 130
Material	PP
Weight (KG)	0.57
Litres	5.3
Units Per Pallet	256



GoFoldOdette 432145

Automotive standard stacking box

Colour	■
External (mm)	396 x 297 x 214
Internal (mm)	360 x 263 x 194
Material	PP
Weight (KG)	1.55
Litres	18
Units Per Pallet	170



RL-KLT 4147

Automotive standard stacking box

Colour	■
External (mm)	400 x 300 x 147
Internal (mm)	345 x 260 x 130
Material	PP
Weight (KG)	1.08
Litres	11.8
Units Per Pallet	160



RL-KLT 4280

Automotive standard stacking box

Colour	■
External (mm)	400 x 300 x 280
Internal (mm)	345 x 260 x 262
Material	PP
Weight (KG)	1.7
Litres	24.1
Units Per Pallet	64



GoFoldOdette 642145

Automotive standard stacking box

Colour	■
External (mm)	594 x 396 x 214
Internal (mm)	558 x 362 x 194
Material	PP
Weight (KG)	2.38
Litres	39
Units Per Pallet	85



GoFoldOdette 643145

Automotive standard stacking box

Colour	■
External (mm)	594 x 396 x 314
Internal (mm)	558 x 362 x 294
Material	PP
Weight (KG)	3.26
Litres	59
Units Per Pallet	85



RL-KLT 6147

Automotive standard stacking box

Colour	■
External (mm)	600 x 400 x 147
Internal (mm)	543 x 359 x 130
Material	PP
Weight (KG)	1.82
Litres	25
Units Per Pallet	80



RL-KLT 6280

Automotive standard stacking box

Colour	■
External (mm)	600 x 400 x 280
Internal (mm)	544 x 359 x 262
Material	PP
Weight (KG)	2.67
Litres	51.9
Units Per Pallet	40



SMALL CONTAINERS

Attached Lid Range

Our Attached Lid containers have high hinged, interlocking lids offering optimum product protection and security throughout the supply chain.



GoALC 43252

A 20 litre attached lid container.

Colour	■ ■
External (mm)	400 x 300 x 252
Internal (mm)	325 x 246 x 222
Material	PP
Weight (KG)	1.65
Litres	20
Units Per Pallet	162



GoALC 43320

A 25 litre attached lid container.

Colour	■ ■
External (mm)	400 x 300 x 320
Internal (mm)	321 x 244 x 295
Material	PP
Weight (KG)	1.87
Litres	25
Units Per Pallet	144



GoALC 64250 Green

A 40 litre attached lid container.

Colour	■ ■
External (mm)	600 x 400 x 250
Internal (mm)	515 x 343 x 215
Material	PP
Weight (KG)	2.8
Litres	40
Units Per Pallet	80



GoALC 64320 Green / Green

A 54 litre attached lid container.

Colour	■ ■
External (mm)	600 x 400 x 320
Internal (mm)	508 x 335 x 285
Material	PP
Weight (KG)	3.2
Litres	54
Units Per Pallet	80



GoALC 64365

A 64 litre attached lid container.

Colour	■ ■
External (mm)	600 x 400 x 365
Internal (mm)	501 x 328 x 330
Material	PP
Weight (KG)	3.38
Litres	64
Units Per Pallet	80



GoALC Removal

An 80 litre attached lid container.

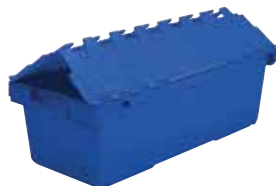
Colour	■ ■
External (mm)	710 x 460 x 368
Internal (mm)	597 x 374 x 330
Material	PP
Weight (KG)	4
Litres	80
Units Per Pallet	60



GoALC IT1

A 160 litre attached lid container.

Colour	■ ■
External (mm)	675 x 575 x 615
Internal (mm)	560 x 430 x 540
Material	PP
Weight (KG)	7.9
Litres	160
Units Per Pallet	40



GoALC LC6

A 135 litre attached lid container.

Colour	■ ■ ■ ■
External (mm)	1125 x 480 x 365
Internal (mm)	1000 x 360 x 340
Material	PP
Weight (KG)	6.92
Litres	135
Units Per Pallet	40



SMALL CONTAINERS

Food & Agriculture Range

Perfect for use from field or food manufacturer to retail point of sale this range includes high quality stack/nest containers, bale arm crates and meat trays.



GoS&N 64123S

Offering Space saving when not in use and strong 1 piece design

Colour	
External (mm)	600 x 400 x 123
Internal (mm)	556 x 356 x 109
Material	HDPE
Weight (KG)	1.475
Litres	22
Units Per Pallet	132



GoS&N 64127P

Offering Space saving when not in use and strong 1 piece design

Colour	
External (mm)	600 x 400 x 127
Internal (mm)	556 x 356 x 105
Material	HDPE
Weight (KG)	1.3
Litres	22
Units Per Pallet	132



GoS&N 64143S

Offering Space saving when not in use and strong 1 piece design

Colour	
External (mm)	600 x 400 x 143
Internal (mm)	556 x 356 x 129
Material	HDPE
Weight (KG)	1.57
Litres	25
Units Per Pallet	116



GoS&N 64147P

Offering Space saving when not in use and strong 1 piece design

Colour	
External (mm)	600 x 400 x 147
Internal (mm)	556 x 356 x 125
Material	HDPE
Weight (KG)	1.5
Litres	25
Units Per Pallet	116



GoS&N 64183S

Offering Space saving when not in use and strong 1 piece design

Colour	
External (mm)	600 x 400 x 183
Internal (mm)	556 x 356 x 172
Material	HDPE
Weight (KG)	1.84
Litres	34
Units Per Pallet	88



GoS&N 64187P

Offering Space saving when not in use and strong 1 piece design

Colour	
External (mm)	600 x 400 x 187
Internal (mm)	556 x 356 x 168
Material	HDPE
Weight (KG)	1.625
Litres	34
Units Per Pallet	88



GoS&N 64240S

Offering Space saving when not in use and strong 1 piece design

Colour	
External (mm)	600 x 400 x 240
Internal (mm)	560 x 356 x 228
Material	HDPE
Weight (KG)	2.2
Litres	47
Units Per Pallet	68



GoS&N 64245P

Offering Space saving when not in use and strong 1 piece design

Colour	
External (mm)	600 x 400 x 245
Internal (mm)	560 x 356 x 224
Material	HDPE
Weight (KG)	1.97
Litres	47
Units Per Pallet	68



GoS&N 64200P

A versatile range of Bi - Coloured stack and nesting containers with smooth and straight walls for large internal capacity and ease of cleaning.

Colour	
External (mm)	600 x 400 x 200
Internal (mm)	495 x 358 x 176
Material	HDPE
Weight (KG)	1.55
Litres	32
Units Per Pallet	140



GoS&N 64200S

A versatile range of Bi - Coloured stack and nesting containers with smooth and straight walls for large internal capacity and ease of cleaning.

Colour	
External (mm)	600 x 400 x 200
Internal (mm)	495 x 358 x 176
Material	HDPE
Weight (KG)	1.722
Litres	32
Units Per Pallet	140



SMALL CONTAINERS

Food & Agriculture Range



GoMaxi 43200P

The UK Standard in Food Harvesting and Distribution

Colour	■
External (mm)	400 x 300 x 200
Internal (mm)	381 x 281 x 170
Material	PP
Weight (KG)	0.97
Litres	16.5
Units Per Pallet	400



GoMaxi 64199P

The UK Standard in Food Harvesting and Distribution

Colour	■
External (mm)	600 x 400 x 199
Internal (mm)	547 x 347 x 175
Material	PP
Weight (KG)	1.59
Litres	36
Units Per Pallet	200



GoMaxi 64253P

The UK Standard in Food Harvesting and Distribution

Colour	■
External (mm)	600 x 400 x 253
Internal (mm)	548 x 352 x 226
Material	PP
Weight (KG)	2
Litres	44
Units Per Pallet	150



GoMeat 64200S

European Standard Meat Tray

Colour	■
External (mm)	600 x 400 x 200
Internal (mm)	550 x 355 x 168
Material	PP
Weight (KG)	2
Litres	40
Units Per Pallet	48



SMALL CONTAINERS

Folding Box Range

Our Folding containers have been designed to save space when not in use and reduce return journey transportation costs.



GoFoldOdette 43214S

A Widely Used Folding Container in the Automotive Industry

Colour	■
External (mm)	396 x 297 x 214
Internal (mm)	360 x 263 x 194
Material	PP
Weight (KG)	1.55
Litres	18
Units Per Pallet	170



GoFoldOdette 64214S

A Widely Used Folding Container in the Automotive Industry

Colour	■
External (mm)	594 x 396 x 214
Internal (mm)	558 x 362 x 194
Material	PP
Weight (KG)	2.38
Litres	39
Units Per Pallet	85



GoFoldOdette 64314S

A Widely Used Folding Container in the Automotive Industry

Colour	■
External (mm)	594 x 396 x 314
Internal (mm)	558 x 362 x 294
Material	PP
Weight (KG)	3.26
Litres	59
Units Per Pallet	85



GoFold 64200P

A 39 Litre Perforated Folding Container

Colour	■
External (mm)	595 x 398 x 200
Internal (mm)	570 x 372 x 185
Material	PP
Weight (KG)	1.658
Litres	39
Units Per Pallet	100



GoFold 64240P

A 47 Litre Perforated Folding Container

Colour	■ ■
External (mm)	595 x 398 x 240
Internal (mm)	570 x 372 x 225
Material	PP
Weight (KG)	1.76
Litres	47
Units Per Pallet	100



GoFold 64215S

A 39 Litre Perforated Folding Container

Colour	■
External (mm)	600 x 400 x 215
Internal (mm)	560 x 362 x 205
Material	PP
Weight (KG)	1.98
Litres	39
Units Per Pallet	64



GoFold 64221P

A 40 Litre Perforated Folding Container

Colour	■ ■
External (mm)	600 x 400 x 221
Internal (mm)	565 x 371 x 194
Material	PP
Weight (KG)	2.17
Litres	40
Units Per Pallet	100



GoFold 64221S

A 40 Litre Perforated Folding Container

Colour	■
External (mm)	600 x 400 x 221
Internal (mm)	565 x 371 x 194
Material	HDPE
Weight (KG)	2.29
Litres	40
Units Per Pallet	100



GoFold 64223SL

A 39 Litre Perforated Folding Container

Colour	■
External (mm)	600 x 400 x 223
Internal (mm)	560 x 362 x 205
Material	PP
Weight (KG)	2.58
Litres	39
Units Per Pallet	64



GoFold 64320SL

A 59 Litre Perforated Folding Container

Colour	■
External (mm)	600 x 400 x 320
Internal (mm)	558 x 362 x 304
Material	PP
Weight (KG)	3.1
Litres	59
Units Per Pallet	64



SMALL CONTAINERS

Plastic Box Lids

We supply a variety of secure fitting lids and covers that are compatible with a wide range of our plastic boxes.



D35	
Automotive standard KLT Lid	
Colour	■
External (mm)	300 x 200
Internal (mm)	N/A
Material	PP
Weight (KG)	0.09
Litres	N/A
Units Per Pallet	2000



GoLid 32	
Solid without hinges	
Colour	■
External (mm)	300 x 200 x 16
Internal (mm)	N/A
Material	PP
Weight (KG)	0.19
Litres	N/A
Units Per Pallet	1200



GoLid 32H	
Solid with hinges	
Colour	■
External (mm)	300 x 200 x 16
Internal (mm)	N/A
Material	PP
Weight (KG)	0.19
Litres	N/A
Units Per Pallet	1200



D45	
Automotive standard KLT Lid	
Colour	■
External (mm)	400 x 300
Internal (mm)	N/A
Material	PP
Weight (KG)	0.26
Litres	N/A
Units Per Pallet	1000



GoLid 43	
Solid without hinges	
Colour	■ ■ ■ ■ ■ ■
External (mm)	400 x 300 x 19
Internal (mm)	N/A
Material	PP
Weight (KG)	0.35
Litres	N/A
Units Per Pallet	600



GoLid 43H	
Solid with hinges	
Colour	■
External (mm)	400 x 300 x 19
Internal (mm)	N/A
Material	PP
Weight (KG)	0.35
Litres	N/A
Units Per Pallet	600



D65	
Automotive standard KLT Lid	
Colour	■
External (mm)	600 x 400
Internal (mm)	N/A
Material	PP
Weight (KG)	0.53
Litres	N/A
Units Per Pallet	500



GoLid 64	
Solid without hinges	
Colour	■ ■ ■ ■ ■ ■
External (mm)	600 x 400 x 16
Internal (mm)	N/A
Material	PP
Weight (KG)	0.865
Litres	N/A
Units Per Pallet	300



GoLid 64H	
Solid with hinges	
Colour	■ ■ ■ ■ ■ ■
External (mm)	600 x 400 x 16
Internal (mm)	N/A
Material	PP
Weight (KG)	0.865
Litres	N/A
Units Per Pallet	300



GoLid 86	
Solid drop on lid	
Colour	■
External (mm)	800 x 600 x 16
Internal (mm)	N/A
Material	PP
Weight (KG)	1.88
Litres	N/A
Units Per Pallet	60



GoLid 1208	
Pallet sized cover lid	
Colour	■
External (mm)	1200 x 800
Internal (mm)	N/A
Material	PP
Weight (KG)	5.8
Litres	N/A
Units Per Pallet	30



SMALL CONTAINERS

Plastic Box Lids & Transport Dollies

Our versatile transport dollies come on swivel and fixed castors and offer a safer, quicker method for moving multiple stacked boxes.



GoPalletBox 1208 Lid

Solid drop on lid

Colour	■
External (mm)	1200 x 800
Internal (mm)	N/A
Material	PP
Weight (KG)	0.65
Litres	N/A
Units Per Pallet	40



GoPalletBox 1210 Lid

Solid drop on lid

Colour	■
External (mm)	1200 x 1000
Internal (mm)	N/A
Material	PP
Weight (KG)	0.78
Litres	N/A
Units Per Pallet	40



GoLid 1210

Pallet sized cover lid

Colour	■
External (mm)	1200 x 1000
Internal (mm)	N/A
Material	PP
Weight (KG)	6.8
Litres	N/A
Units Per Pallet	30



GoPalletBox 1311 Lid

Solid drop on lid

Colour	■
External (mm)	1300 x 1150
Internal (mm)	N/A
Material	PP
Weight (KG)	0.9
Litres	N/A
Units Per Pallet	30



GoDolly 64NL

A strong but versatile dolly with a plastic deck, on 2 fixed and 2 swivel castors.

Colour	●
External (mm)	635 x 415
Internal (mm)	N/A
Material	ABS
Weight (KG)	3.75
Litres	N/A
Pallet Size	1200 x 800 x 2400
Units Per Pallet	60



GoDolly 64 L

A strong but versatile dolly with a plastic deck, on 2 fixed and 2 swivel castors with the addition of a link bar, enabling the linking of multiple dollies.

Colour	●
External (mm)	635 x 415
Internal (mm)	N/A
Material	ABS
Weight (KG)	4
Litres	N/A
Pallet Size	1200 x 800 x 2400
Units Per Pallet	60



GoDolly 86

A strong but versatile dolly with a plastic deck, on 2 fixed and 2 swivel castors.

Colour	●
External (mm)	800 x 600
Internal (mm)	N/A
Material	MDPE
Weight (KG)	11
Litres	N/A
Pallet Size	1200 x 800 x 2400
Units Per Pallet	24



ABOUT GOPLASTICPALLET.COM



Goplasticpallets.com – The Responsible Plastic Pallet Company – is the UK's leading independent supplier of plastic pallets and plastic pallet boxes. We stock the widest range of plastic pallets, plastic boxes and small containers in the United Kingdom.

Our mission

Our mission is to help create more sustainable supply chains by providing long lasting, reusable plastic pallets and boxes, and ensuring they are responsibly recycled at the end of their use.

Our partners

Our sole distribution agreements with five of Europe's largest plastic pallet and box manufacturers puts us in the enviable position to be able to offer from a very large and competitive range of products, most of which are available from stock with personalisation, if required.

CABKA  **IPS**
better pallets



JCOPLASTIC SpA
Industria Contenitori Plastici



Who we are

After 18 years working in the logistics sector and six years in the pallet industry, Managing Director Jim Hardisty co-founded Goplasticpallets.com in 2001 with business partner Chris Adam as a trading name of All Pallets Ltd to facilitate the supply of plastic pallets and plastic pallet boxes to businesses in the UK.

Starting with a team of just five, the business has successfully grown to become the UK's leading independent supplier of plastic pallets and boxes, today employing 26 members of staff, plus three in senior management, who between them boast more than 160 years' service to the company.

Why we do it

So we can deliver the best solution for your specific application!

Our ability to find a product to suit your specification and then customise it, if required, means we won't limit your choice.

We understand today's supply chain is both demanding and fast paced. That's why we hold large product quantities on site and deliver straight to you in three days or less.

RESPONSIBILITY POLICY

We are leading the way in the pallet industry when it comes to sustainability!

More than 96% of the plastic pallets we supply are made from recycled material. Plus, as an Accredited Exporter of plastic packaging waste, we guarantee to take full responsibility for recycling all of the plastic pallets and boxes we supply to you – our valued customers.

Our promise

With every product in our range, we issue our Responsibility Certificate. This Certificate is our promise to responsibly recycle the plastic pallets and boxes we supply, at the end of their long use, or when they are no longer required.



RESPONSIBLE

Our recycling process

Cost-effective and hassle-free, we have made our recycling process as simple as possible for our customers.

For volumes in excess of 1500kg, we will arrange a collection and transport the recovered plastic pallets and boxes to our partner's recycling facility in Belgium.

For smaller loads, customers can arrange a drop off at our warehouse, where once consolidated we will transport the products in full truck loads to ensure they run at their maximum efficiency.

Why Belgium?

Our partner's recycling factory in Belgium is one of only three in Europe with a pallet recycling facility adjacent to the manufacturing plant, and is the closest one to the UK.

By recycling our customers' plastic pallets and boxes in Belgium we guarantee that they will not only be ethically recycled by a fully licensed facility, but also that the recovered material will be reused to make the next wave of high quality, long life plastic pallets and boxes.

How do I get involved?

Simply call our dedicated recycling team on **+ 44 (0)1323 744 057** or send an email to recycling@goplasticpallets.com to register your interest.



Our Recycling Commitment

We, the Directors of Goplasticpallets.com, hereby guarantee to take full responsibility for recycling the plastic pallets and boxes we supply.

This certificate is proof of our recycling commitment to you, our valued customer.

Signed by:

JIM HARDISTY

Managing Director

CHRIS ADAM

Director

Under 1500kg you will be able to send your pallets to us for recycling.
Over 1500kg you can ask us about arranging a collection.
Exclusions to our Guarantee: We cannot recycle plastic pallets or boxes which are contaminated with hazardous chemicals, medical waste, organic matter, concrete, or that have steel reinforcement inside.

Contact our recycling team by calling +44 (0)1323 744057
or by emailing recycling@goplasticpallets.com for further information.

Unit 6, Alder Close, Eastbourne, East Sussex, BN23 6QF



goplasticpallets.com[®]
The Responsible Plastic Pallet Company

GoPlasticPallets.com – All Pallets Ltd

Unit 6, Alder Close, Eastbourne, East Sussex, United Kingdom, BN23 6QF
Tel: +44 (0)1323 744057 • Email: sales@goplasticpallets.com

Company Reg: 2794548

Autumn 2019 Edition