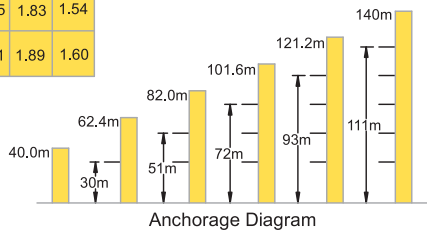


# TC 6040 Tower Crane

5 t

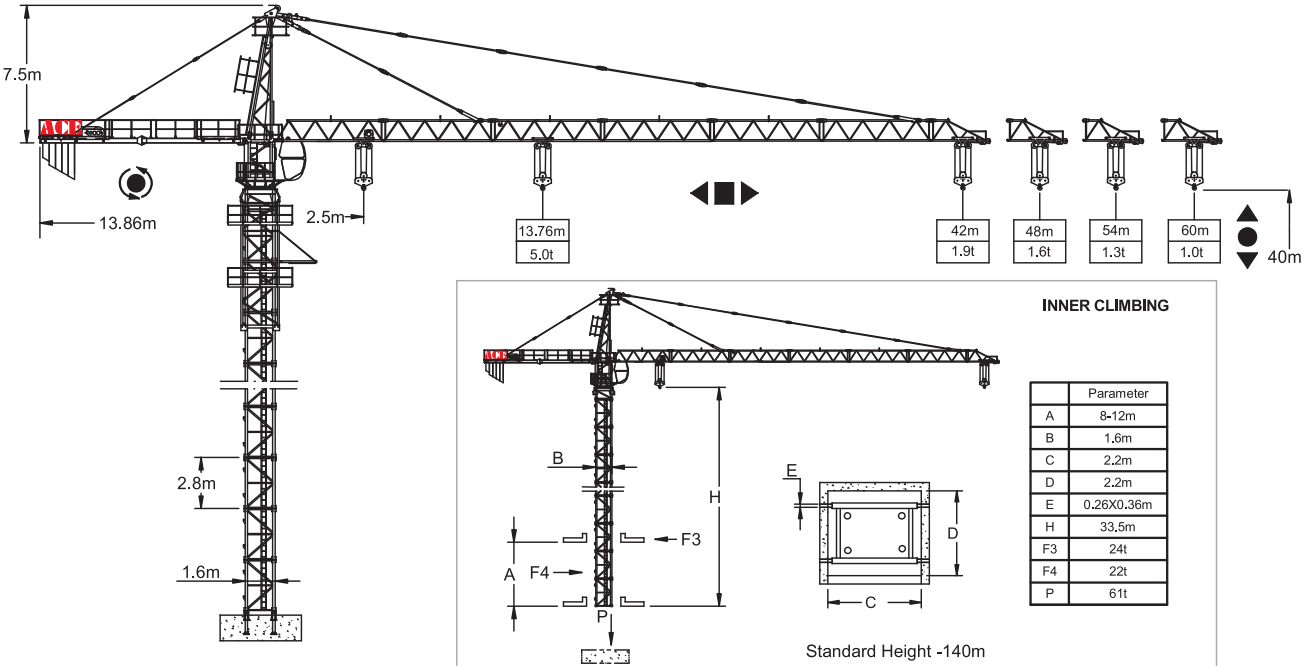
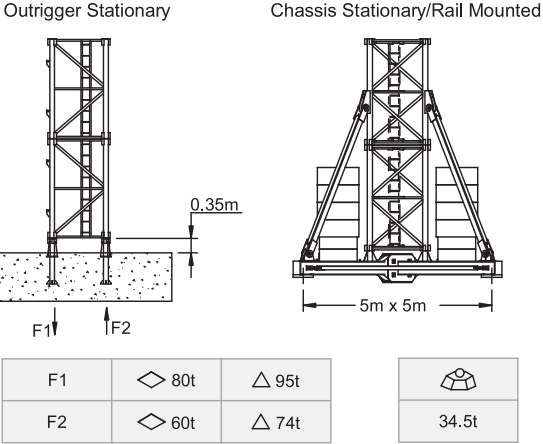
## Load Capacity

Jib Length	Radius (m)		2.5~16	18	20	22	24	26	28	30	32	34	36	38	40	42	44	46	48	50	54	56	60	
	60m	Hoisting Load (t)	5.00	4.40	3.90	3.48	3.14	2.85	2.61	2.40	2.21	2.05	1.91	1.78	1.66	1.56	1.46	1.38	1.30	1.23	1.10	1.08	0.94	
		2.50										2.27	2.11	1.97	1.84	1.72	1.62	1.52	1.44	1.36	1.29	1.16	1.14	1.00
Jib Length 54m	Radius (m)		2.5~16	18	20	22	24	26	28	30	32	34	36	38	40	42	44	46	48	54				
	Hoisting Load (t)	5.00	4.83	4.28	3.83	3.46	3.15	2.88	2.65	2.45	2.27	2.12	1.98	1.85	1.74	1.64	1.54	1.46	1.24					
		2.50										2.33	2.18	2.04	1.91	1.80	1.70	1.60	1.52	1.30				
Jib Length 48m	Radius (m)		2.5~18	20	22	24	26	28	30	32	34	36	38	40	42	48								
	Hoisting Load (t)	5.00	4.48	4.01	3.63	3.30	3.02	2.78	2.57	2.39	2.23	2.08	1.95	1.83	1.54									
		2.50										2.29	2.14	2.01	1.89	1.60								
Jib Length 42m	Radius (m)		2.5~18	20	22	24	26	28	30	32	34	36	42											
	Hoisting Load (t)	5.00	4.48	4.01	3.63	3.30	3.02	2.78	2.57	2.39	2.23	1.83												
		2.50										2.29	1.90											



## Specifications

Hoisting	No of Falls						
	Speed (m/min)	11.75	40	80	5.87	20	40
	Hoisting Load (t)	2.5	2.5	1.28	5	5	2.56
	Power (kw)	5	18	18	5	18	18
Slewing	Speed (rpm)	0 ~ 0.6					
	Power (kw)	2 x 2.2					
Trolley	Speed (m/min)	20		40			
	Power (kw)	2.2		3.3			
Climbing	Speed (m/min)	0.55 - 0.7					
	Power (kw)	7.5					
Main Supply	415V / 50Hz						
Electric Power	25.7 kw (32.1kVA)						
Variant Model	6 Ton Max. Capacity Mechanism at 13.76m						



F Reaction In Service Out of Service Dead weight without load and counter weights but with longest jib and free standing height.  
P - Vertical Load