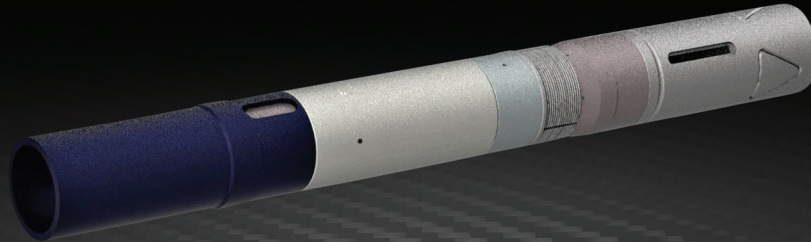




MORPHANCHOR™

PRODUCTION ANCHOR



FILL THE GAP BETWEEN VALUE AND PERFORMANCE



MORPHANCHOR™ THE PERFECT MECHANICAL ISOLATION SOLUTION FOR REFRAC ENABLING STANDARD PLUG AND PERF TECHNOLOGY

MorphPackers deliver revolutionary and highly innovative expandable steel packers specializing in refrac packers and production packers and anchors for the global oil and gas sector.



Expandable steel annular packers and barriers.



Lowest price to performance ratio for conventional and cementless completion solutions.

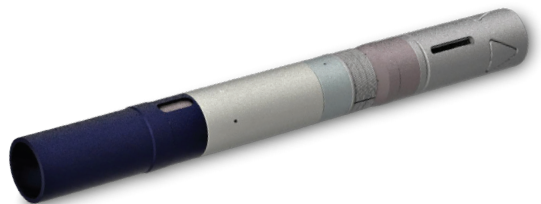


Reducing well construction costs. Optimizing production. Enhancing integrity.



MORPHANCHOR™

PRODUCTION ANCHOR



ABOUT

MorphAnchor™ is a hydraulic production anchor that offers a Slim high-clearance OD design and a Big Bore ID deployed on a drillpipe conveyed running tool.

FEATURES

- Big Bore ID design matching the drift of conventional 4-1/2" 12.6# pipe
- Slim OD for high RIH clearance
- Short length
- Anti pre-set mechanism
- Easily millable
- Temperature rating 250°F

BENEFITS

- Allows use of standard plug and perf technology
- Big Bore – High pump rates
- Slim OD – Easy to deploy

APPLICATIONS

- Deploying cased hole completions
- Frac & Refrac tubing anchor

DIMENSIONS

DIMENSIONS	CASING WEIGHT	TUBING SIZE	ANCHOR OD	ANCHOR DRIFT ID
5.500"	17#	4.500"	4.700"	3.795"
Other sizes and specifications are available				



Morphpackers Limited
2203 Timberloch Place, Duite 100
The Woodlands, TX 77380

+1 281 296 1679
info@morphpackers.com
www.morphpackers.com