

PUBLIC AND CULTURAL



SAOTA

GLOBAL REGIONS



SAOTA has a global footprint with projects on 6 continents.

We have a clear understanding of the place of design in the world, and how to design and deliver architectural projects in diverse markets.

COMPANY PROFILE

SAOTA, a leading firm of architects is driven by the dynamic combination of Stefan Antoni, Philip Olmesdahl, Greg Truen, Phillippe Fouché and Mark Bullivant who share a potent vision easily distinguished in their design.

This, paired with both an innovative and dedicated approach to the design, documentation and execution of projects globally, has seen SAOTA become an internationally sought-after brand.

SAOTA has a global footprint with projects on 6 continents. We have a clear understanding of the place of design in the world and how to deliver architectural projects in diverse markets.

This success is driven by a design philosophy that connects function and form, and the pursuit of true architectural design to create appropriate solutions. The focus on achieving maximum value has also led to global invitations to design, build and create highly prestigious projects.

The philosophy of practice is embodied in the spirit of enquiry that flourishes amongst its staff. This spirit not only guides the firm, but enables it to maintain its position as definitive designers in a highly competitive and fast-changing industry. Increased exposure to the global marketplace has seen SAOTA flourish as cities and contexts allow for infinite inspiration which can be seen radiating from the approach to design.

SAOTA is also focused on using the most current computer technology in its design process, both to understand the design and to communicate the design to our clients. To this end we are world leaders in the use of Revit and have also developed virtual reality tools for use in our process.

“We strive to promote a service marked by excellence both in our buildings and in addressing the needs of our clients, with the focus on high standards & elegance.”



PUBLIC AND CULTURAL



NEB UCT Cape Town South Africa

SACFA

PUBLIC AND CULTURAL

UCT NEB

Cape Town South Africa

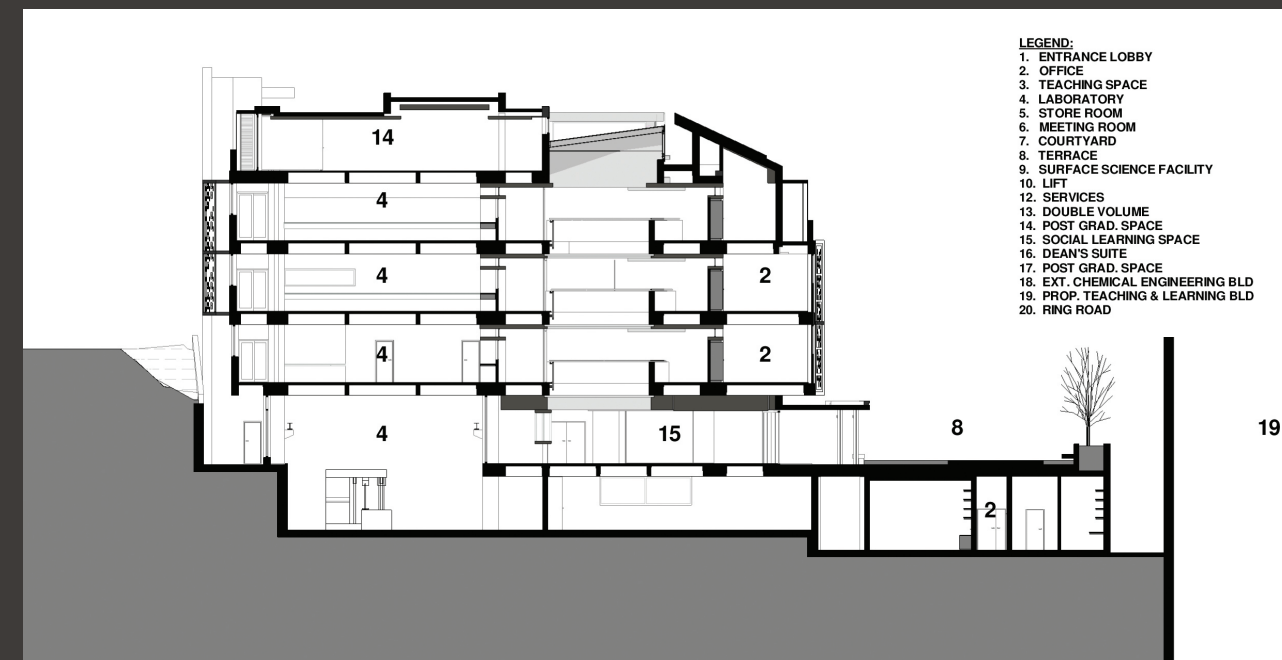
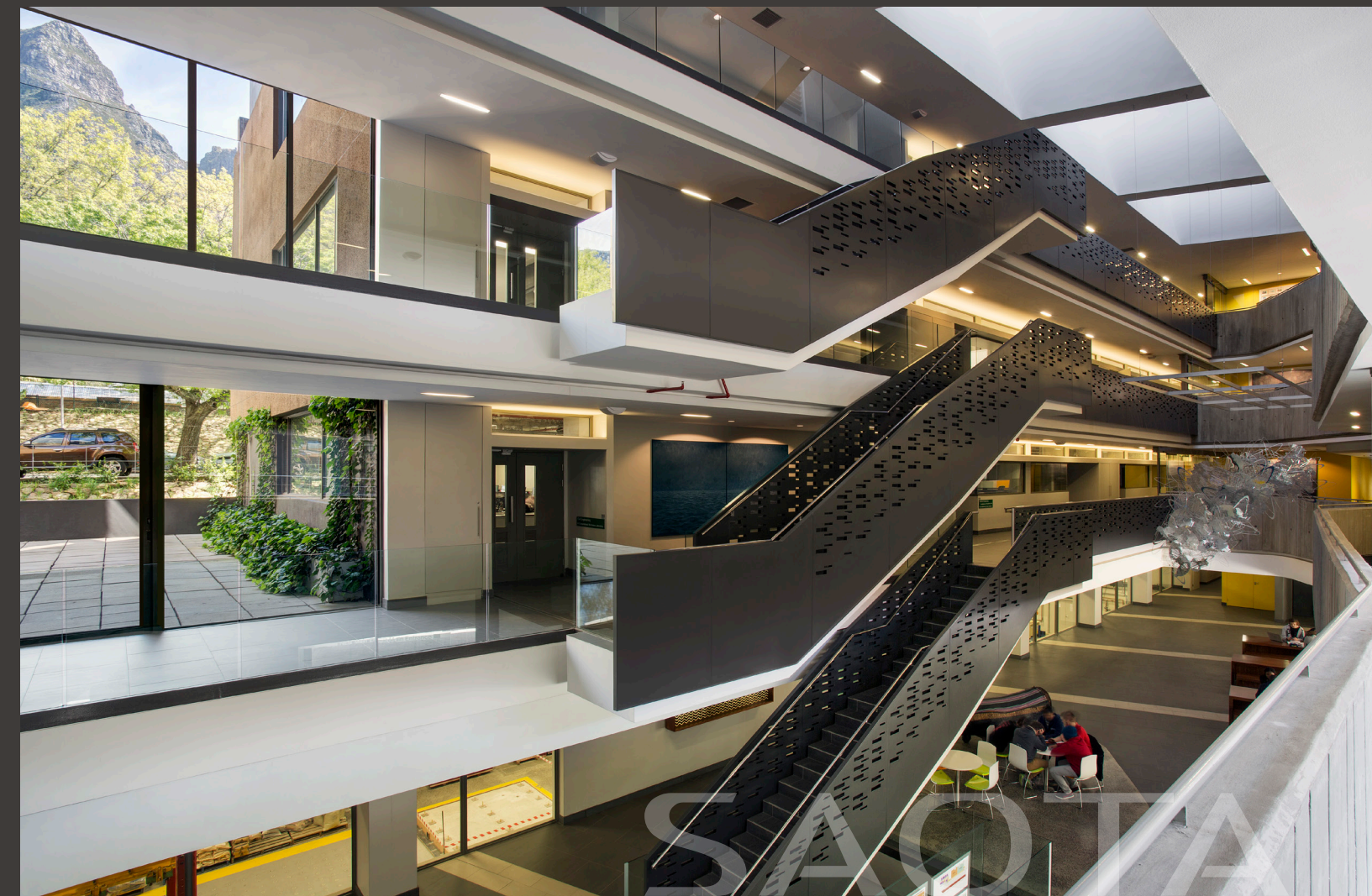
After we completed the New Engineering Building (NEB), we were asked to design The Learning Building on the same site situated on University of Cape Town's Upper Campus.

The Snape Building which used to be occupied by civil engineering was demolished to make way for a new Teaching and Learning Building (TLB). Construction of this new building, which will house the Department of Construction Economics and Management (CEM) and will include nine multifunctional lecture theatres, a micro-lab, and a satellite campus of the Library Knowledge Commons, started in 2013.

The civil engineering laboratories as well as a new, spacious teaching laboratory will be housed in the basement of the building. Civil

Engineering staff and postgraduate students occupy the offices in the south end of the NEB.

The main additions to the faculty are the state-of-the-art lecture theatres (which will be part of the TLB), more space for the Departments of Chemical Engineering and the School of Architecture, Planning and Geomatics (through the move of CEM), and a dedicated Surface Science laboratory (for the electron microscopes) shared between three faculties and situated between the two larger buildings.



PUBLIC AND CULTURAL



NMMU Port Elizabeth South Africa

SAOTA

PUBLIC AND CULTURAL

NMMU

Port Elizabeth South Africa

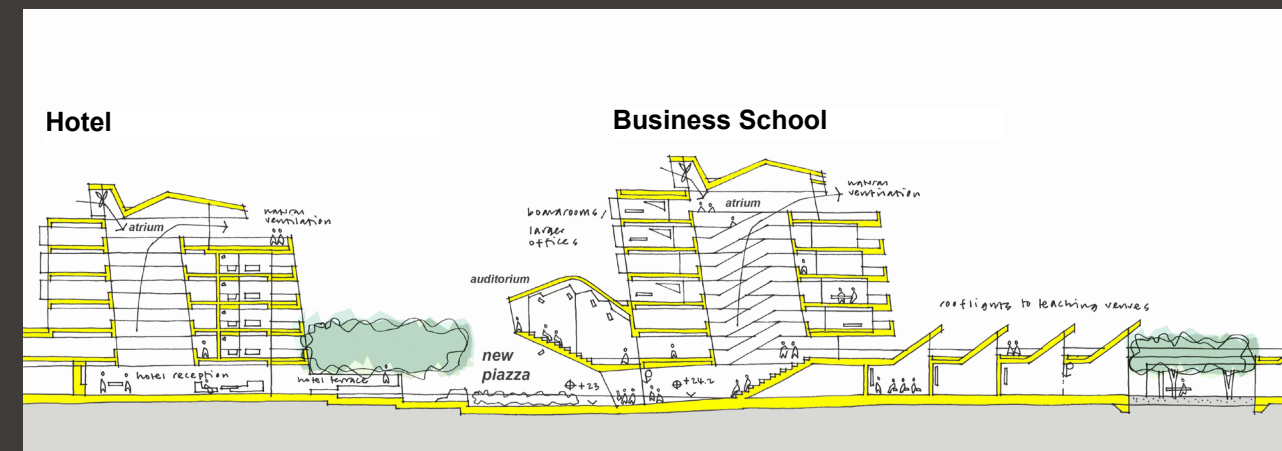
Nelson Mandela Metropolitan University is the largest Higher Education institution in the Eastern and Southern Cape with an enrolment of 27 000 students located over six different campuses.

The proposed Business School is located on a prominent site within an existing campus in the centre of Port Elizabeth. The Business School provides 4,500m² of accommodation, including auditoria, lecture venues and syndicate rooms; classrooms, multi-media facilities and departmental offices.

The design of the Business School focuses on the visual and physical integration with the existing campus. Vehicular access and circulation patterns have been carefully developed to enhance the extent and quality

of the pedestrian realm. The proposed buildings frame and punctuate the landscaped spaces whilst providing shelter from prevailing winds. The architectural response places emphasis on the visual and material contrast of adaptable, flexible learning spaces with functionally specific venues.

The proposal aims to be environmentally responsible through the use of shaded façades, the collection of solar and wind energy sources, water retention and recycling and though natural ventilation of internal spaces.



SAOTA

PUBLIC AND CULTURAL



FIRST ACADEMY

Lagos Nigeria

SAOTIA

PUBLIC AND CULTURAL

FIRST ACADEMY

Lagos Nigeria

First Bank is one of the older more established banks in Nigeria. First Academy is a highly dynamic subsidiary, focussing on attracting human capital and also developing skills, banking competence and leadership.

The Academy approached SAOTA through an established real-estate group in Nigeria to design a world – class training facility. The 25000m² facility also includes accommodation for staff and students with recreational facilities.

The Academy is located on a Polo estate outside Lagos, certain facilities are shared with the estate which also will be hosting larger corporate events, conferences and weddings.

The architectural language is inspired by vibrant Nigerian patterns and colour while expressing an educational permanence.

Transparency and gravitas, which relates to the companies ethos, is conveyed through heavy faceted walls, juxtaposed with airy courtyards visible throughout the Legible organisation of the facilities.



PUBLIC AND CULTURAL



MANKGAILE PRIMARY SCHOOL Limpopo South Africa

SAOTA

PUBLIC AND CULTURAL

MANKGAILE PRIMARY SCHOOL

Limpopo South Africa

The site is on a commanding position overlooking the village. Being the most important building in the village and as it will be used as the village community centre, place of gathering and functions and sporting events it was felt that the building needed to have a presence and a stature for the community.

A formal and symmetrical arrangement was felt to be most appropriate to reinforce this aspect.

The school is arranged along a rear spine acting virtually as a street connecting the centre public square or Forum and the two outer classroom courtyards.

The main entrance is through gates on the

Southern end of the spine. Being double volume in height with portions permitting filtered light it provides for a certain air of drama.

The Forum forms the centre and heart of the school and opens onto the grand veranda and covered loggia walkway overlooking the sports field.

The colonnade is made up of steel posts with a pergola of latte providing shade in the afternoons and together with the filtered light forms a very light and permeable layer to the heavier and solid building behind. Toilets are positioned to allow for easy access for school or non-school events.



PUBLIC AND CULTURAL

NEB TLB Cape Town South Africa

SAOTA

PUBLIC AND CULTURAL

NEB TLB

Cape Town South Africa

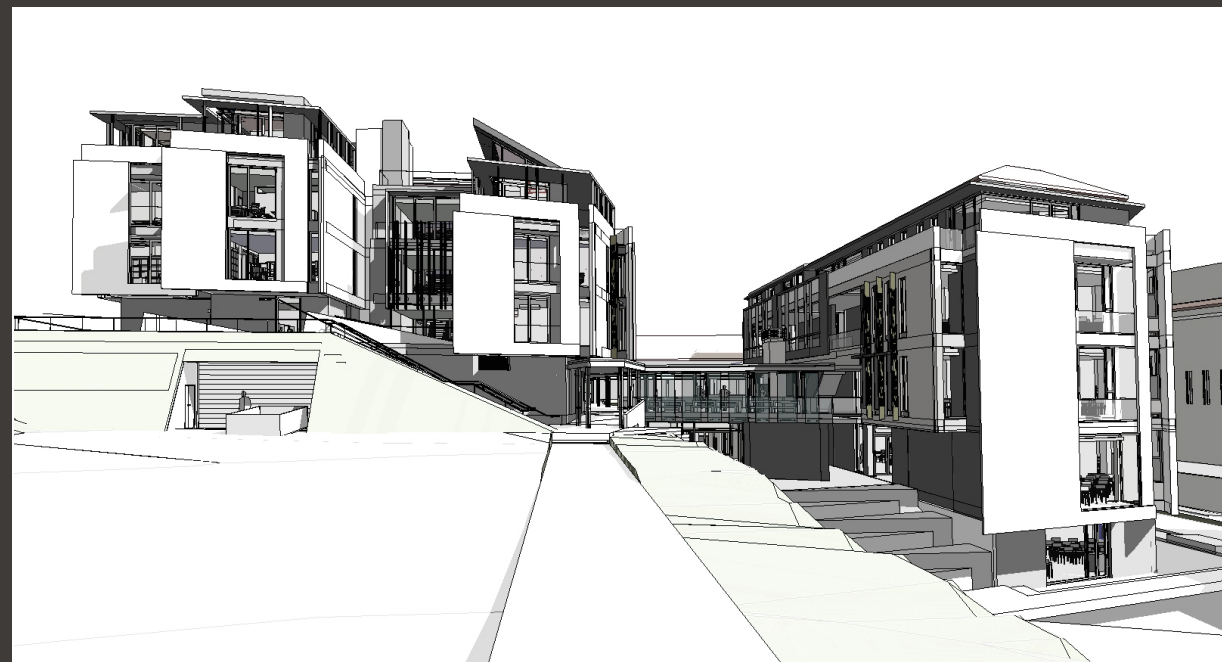
After we completed the New Engineering Building, we were asked to design The Learning Building on the same site situated on University of Cape Town's Upper Campus.

The Snape Building which used to be occupied by civil engineering was demolished to make way for a new Teaching and Learning Building (TLB). Construction of this new building, which will house the Department of Construction Economics and Management (CEM) and will include nine multifunctional lecture theatres, a micro-lab, and a satellite campus of the Library Knowledge Commons, started in 2013.

The civil engineering laboratories as well as a new, spacious teaching laboratory will be housed in the basement of the building. Civil

Engineering staff and postgraduate students occupy the offices in the south end of the NEB.

The main gains to the faculty are the state-of-the-art lecture theatres (which will be part of the TLB), more space for the Departments of Chemical Engineering and the School of Architecture, Planning and Geomatics (through the move of CEM), and a dedicated Surface Science laboratory (for the electron microscopes) shared between three faculties and situated between the two larger buildings.



PUBLIC AND CULTURAL

MZAMOMTSHA

Cape Town South Africa

The Mzamomtsha Primary School provides facilities in an impoverished and marginalized area on the Cape Flats. The school has sports fields, a library, specialist classrooms and a computer room.

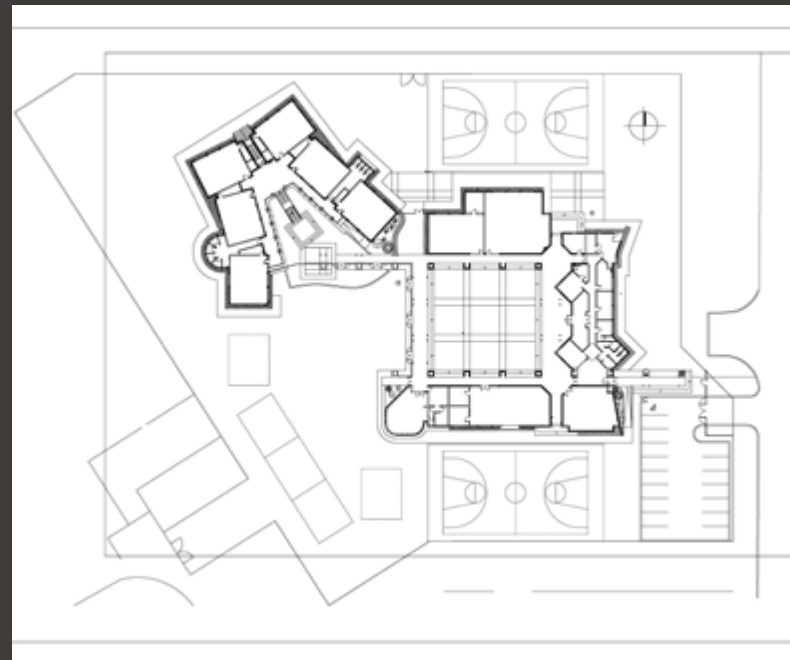
The Mzamomtsha project is a fresh take on the relationship built between a community and their school building.

Located in Driftsands, it branches out and improves on the design brief and style of schools which was previously dictated by the Department of Education and Training in Pretoria.

The project was split into three distinct elements: those that belong to the children, those that relate to the administration of

the school and those that the community can partly stake claim to. This third group comprises; the Computer Room, the Library, the Forum and a physical training slab (fitted as a basketball court), and was positioned closest to the entrance to the site.

Through the Internet and the library these facilities provide a link to the outside world representing a powerful resource for adult education, and creates a venue for community meetings, sports events, fêtes etc.



PUBLIC AND CULTURAL

PARKWOOD LIBRARY

Cape Town South Africa

Approached in 2008 by Primedia Broadcasting with a view to becoming a partner in providing some form of social service in a deprived community in the Western Cape.

Primedia was particularly interested in the education sector, and primary level education especially.

On consulting various structural engineers, our conclusion was that the use of concrete panels in lieu of brickwork was the more technically savvy and cost-effective solution. The engineering would comprise cast in-situ panels that could be "folded" into position on site.

An extra benefit was that this would provide some jobs for local people during the quick

- week-long - installation. The Parkwood Primary project has already received recognition in the form of the FIRST FIX 2009 Best Use of Autodesk Revit BIM Technology prize.

The goal of placing an intervention like this in Parkwood is to make it easier for children to have access to functional, visual, digital and media literacy, an environment of cultural and reader development and lifelong learning, and creative programmes during their leisure time.

It is hoped this will lead to more activities being taken up by childcare givers and parents to encourage their children to be confident in their search for knowledge.



PUBLIC AND CULTURAL



SCHOOL OF EXCELLENCE
SCHOOL OF EXCELLENCE

ACADEMY OF EXCELLENCE

Lagos Nigeria

SAOTA

PUBLIC AND CULTURAL

ACADEMY OF EXCELLENCE

Lagos Nigeria

The Academy of Excellence (AOE) is an educational institution for a respected financial corporation located in Lagos, Nigeria, where employees of all experience levels are brought together on one campus to receive training and skills development.

The idea was to create a world-class institution in the form of an academic “village”. The design aims to embody the culture and values of the bank, as well as bringing together students and their lecturers in a residential campus. The wider vision is that this academy is embedded into the social and cultural fabric of the city becoming a wider resource for art and critical debate.

The site is located next to the main entrance of a larger precinct development. This

frenetic and highly visible setting is reflected in memorable and expressive architecture. The Academy rises gently up off the street to form a distinct realm elevated above the daily grind. Planting and shade characterise this raised plinth which acts as a “public square”, above the centralized parking & services below.

Locally sourced materials and labour will be used to promote the local economy and the culturally rich communities surrounding the development. The architecture itself is conceived as a language drawn from the diverse textiles, patterns and colours found in Lagos.



SPECIAL CAPABILITIES

DESIGN

Our architectural designers are highly skilled and experienced, allowing schemes to be conceptualised in dynamic, yet legible presentations. The design process can therefore develop swiftly with the precise method of achieving objectives and testing the solutions comprehensively. SAOTA have done a substantial amount of projects abroad and have skills in achieving the project requirements set. The design architects are backed up by an advanced computer aided drawing office capable of detailed 3D analysis and presentation.

TECHNICAL

The office has developed advanced technical skills related to, i) Construction Detailing, ii) Building Services and iii) Contract Administration of projects. Further, in working on projects abroad the office has had experience with multi-disciplinary project teams made up of consultants from companies from various countries.

SYSTEMS

SAOTA have developed advanced systems for co-ordination of the projects across all stages of the architects service. This ensures that client presentations, design reviews, Technical Documentation, Tendering and Contract Administration are managed to the highest quality standards.

SAOTA also uses REVIT, the leading Building Information Modelling (BIM) software available allowing us to develop and document a building in a 3 dimensional environment. Any changes are immediately co-ordinated through the entire documentation package. It also gives us unprecedented control over the co-ordination of structure and services when working with consultants using the same platform.

Lumion is used as an architectural visualization tool which allows us to build a 3D environment and create images of each project. Furthermore impressive video presentations and live walkthroughs are created.

Together with Tenebris Lab Director, Gerard Slee, SAOTA developed LUX Walker, a software enabling designers and clients to experience their designs in virtual reality. It's a workflow tool that renders a realistic, true-to-life scale representation of a 3D model that clients can easily interact with.



SELECTED AWARDS

2019 TIDA International House of the Year	AU Double Bay	2010 MIPIM International Awards - Commendation	SN Dakar Towers
2019 Idea-Tops Global Nomination Award	ZA Kloof 119A	2009 Cape Institute for Architecture	ZA Head 1815
2018 Spice Lifestyle Honors Company of the Year	SAOTA	2009 Cape Institute for Architecture	ZA Victoria 73
2018 SAPOA Award for Innovative Excellence	ZA Clifton Terraces	2009 Cape Institute for Architecture	ZA Hatfield 109
2017 Cape Institute for Architecture - Commendation	ZA Invermark	2009 Retail Design Development Awards - Finalist	ZA Alex Junction
2016 Architizer A+ Awards: Popular Choice Award	ZA OVD919	2009 House & Leisure House of the Year Award	ZA First Crescent
2015 International Property Awards – Best Residential Development	SC Pangia Beach	2009 OPEN THINKBOX / FIRST FIX - Winner	ZA Parkwood Library
2014 SAPOA Award for Innovative Excellence	ZA New Engineering Building UCT	2009 Libera Invited Competition - Winner	HR Dubrovnik
2014 Miami Chamber of Commerce	US MIA Star	2006 South African Institute of Architects	ZA Mankgaile
2013 Cape Institute for Architecture	ZA Boma	2003 South African Institute of Architects	ZA Fisherman's 19
2012 SAIA Award for Excellence	ZA Voelklip	2003 Cape Institute for Architecture	ZA Fisherman's 19
2011 SAIA Award of Merit	CH Lake House & ZA Voelklip	1998 South African Institute of Architects	ZA Contursi Special Mention
2011 Cape Institute for Architecture	CH Lake House	1995 SAIA South Africa Institute of Architects	ZA Santer
2011 Cape Institute for Architecture	ZA Voelklip		
2011 KZN Institute for Architecture	ZA Havaan D		
2010 SAIA Award for Excellence	ZA Hatfield 109		
2010 SAIA Award of Merit	ZA Hatfield 109		



Architizer A+ Awards



SAOTA

SELECTED MEDIA COVERAGE



MEET THE TEAM

DIRECTORS



Stefan Antoni



Greg Truen



Philip Olmesdahl



Phillippe Fouche



Mark Bullivant



Logen Gordon

SENIOR ASSOCIATES



Tamaryn Fourie



Roxanne Kaye



Bobby Hugill



Dominik George



Danielle Reimers



Joe Schützer-Weissmann

ASSOCIATES

JUNIOR ASSOCIATES



Enslin Joubert



Grant Hall



Erin Gibbs



Philip Bartman

