

SCIENSCOPE

DIGITAL INSPECTION

CATALOG 2019

- Macro HD Inspection
- AutoFocus HD Inspection
- Image/Video capture and measurement



SCIENSCOPE

AUTO FOCUS HD

MACRO ZOOM DIGITAL INSPECTION SYSTEMS



HD

CMOS

HDMI

USB

SD

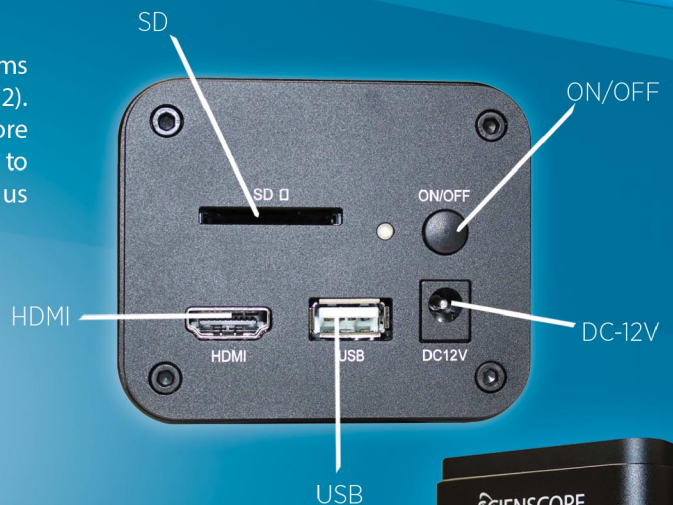
AUTO-CAM (CC-HDMI-AF2)

HD CMOS HDMI USB SD

ScienScope's industry standard Macro video/digital inspection systems now feature the powerful and convenient Auto-Cam (CC-HDMI-AF2). The systems, built around our versatile macro lens, now even more easy to use thanks to fast auto focus technology, which allows you to speed up your inspection routine beyond your current capabilities. Contact us for an onsite demo today!

Camera Overview

- Full Toolbar w/ Camera Controls
- 1080p Resolution
- HDMI 60FPS and USB 30FPS
- 2.8µm / 2.8µm Pixel Size
- 1080P/Sony IMX236(C) Sensor Sized at 1/2.8"(5.38x3.02)
- DC 12V/2A Adaptor
- Compatible Displays: 19"+
- Weight of 0.47 kg (1.0lbs)
- Exposure of 0.1ms~999ms
- Dimensions of 78mm (3.07") x 70mm (2.76") x 92mm (3.62")



System Overview



SYSTEM DISPLAYED (PART# MAC-PKSD-R3-AF)

Includes Our Auto Focus HD 1080p Inspection Camera, Image Capture Software, a Dual Arm Boom Stand, LED Ring Light with adapter, 24" monitor, mouse, 10gb sd card, HDMI Cable & Power Adapter.

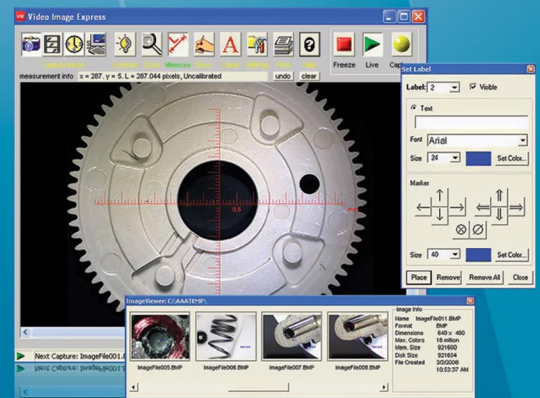
FEATURING

- Super-fast auto focus
- ROI Auto focus within field of view
- Imbedded camera control software
- Capture images and video to SD card
- Fast auto and manual exposure
- Full 1080p 60 fps frame rates
- Connect, view, and control via WiFi
- ROI white balance
- Real-time color adjustments
- Digital zoom
- Image Comparison
- Choice of stands and lighting

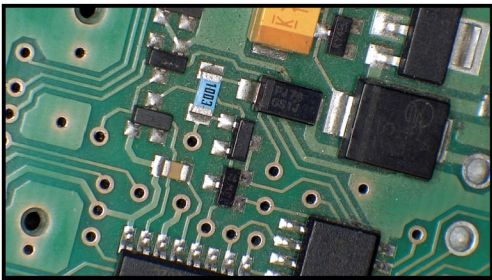
AutoFocus (cc-hdmi-af) | Camera Specifications

Image sensor	1/2.86 Inch Panasonic FULL HD 2.0 Megapixel	Edge enhancements /Sharpening	Yes
Effective pixels	1920 x 1080	Freeze image	Yes
Frame rate	60fps	HDR	Yes
Definition	More than 1200lines (the highest level)	Cross hair	Multi-color, small or large
Housing	Aluminum	Horizontal/Vertical Lines	Multi-color, two lines for each
White balance	Automatic/Manual/Continuous	Noise Reduction	Support
Brightness control	Automatic/Manual/Continuous	SD card slot	Support up to 32GB SD card
Color	R/G/B adjustable	HDMI	1080p
Edge enhancement:	Yes	USB	USB 2.0
OSD:	Yes, in HDMI mode		

INCLUDES USB CAMERA SOFTWARE



APPLICATIONS



Electronics

Macro Systems with Auto-Focus makes electronics inspection an even more comfortable and efficient process. Now easily move and manipulate your circuit board and never lose focus! Document your work! Images or video can be captured with one click of the mouse and stored to a removable SD card. For high volumes of documentation use WiFi to connect and capture images with your computer.

Medical Devices

Keep a sharp focus, no matter what the application! Whether you are inspecting catheters, stents, pacemakers, or surgical implements, medical devices require 100% inspection with the greatest possible scrutiny. Auto-Focus makes it even easier to inspect, document, and compare with confidence. Now you can hand-hold your parts while the camera focuses for you!

Aerospace & Defense

With perhaps the widest variety of applications, the aerospace and defense industries, can benefit the most with autofocus technology. From fan blades to fasteners, electronics, and hydraulics, the auto-focus systems from Scienscope can make unusual surfaces and geometries an easy inspection process. Now you can place your focus on quality rather than set-up and procedure with the new Auto-Cam from Scienscope.



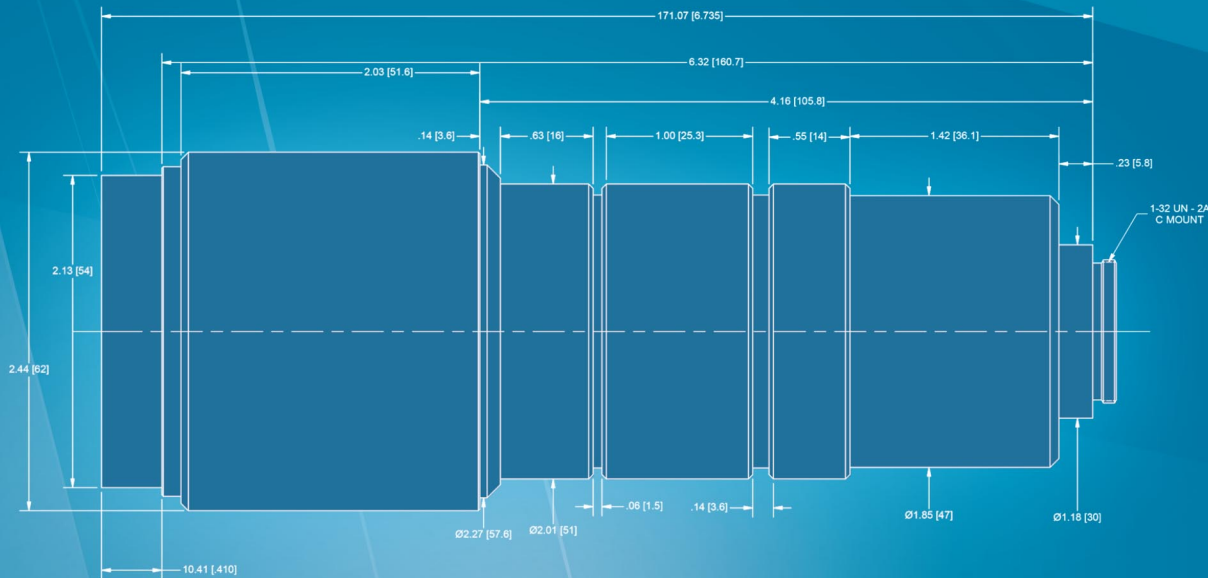
ALL SYSTEMS INCLUDE THE SCIENSCOPE CC-97-LN1 MACRO ZOOM LENS

The ScienScope CC-97-LN Macro Zoom Lens with Close-up lens is perfect for a detailed inspection view. With crisp and clear imagery, this Lens is bound to meet your macro inspection needs. The Macro Zoom lens is ideal for quality assurance, biomedical imaging, or assembly applications where an easy-to-view, sharp and true-to-life magnified image of your product can mean the difference between a shippable, top-quality end product and a costly manufacturing failure. The Macro Zoom lens has the most Depth of Field and Field of View available from a video lens with all adjustment at your fingertips such as zoom, focus, and iris control. Our Macro Zoom lens is designed for large fielded views, large range of working distance, and large depth of field applications. Range from 7" - 12" of working distance with a close-up/cover lens and from 11" to infinity without the close-up/cover lens. Up to 61.9X magnification.

FEATURING

- Maximum Of 70x With 23" Monitor
- Maximum Of 80mm FOV At 10" WD
- High Depth Of Field
- Manual Iris
- Built To Last

LENS SPECIFICATIONS



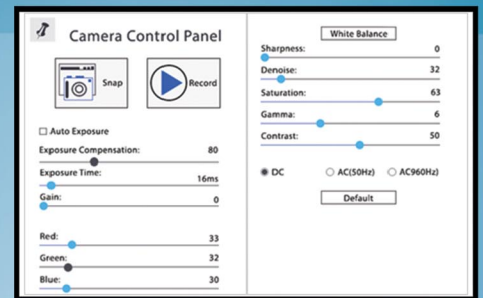
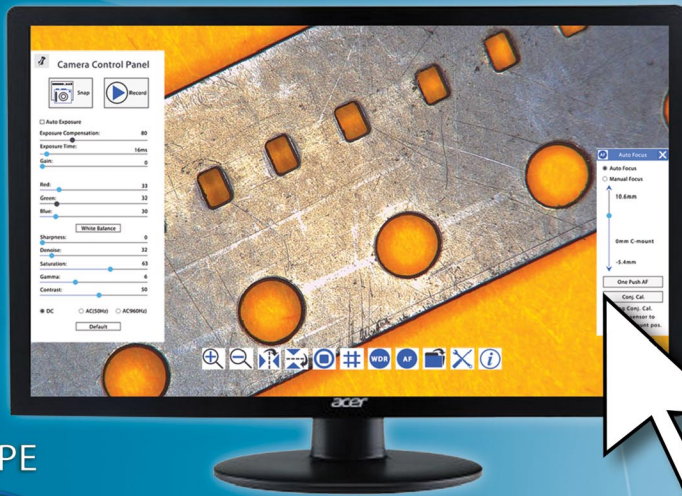
SPECS BASED ON 23" MONITOR

Working Distance	MAG	FOV (MM)
5"WD	High Low	70x 13x 7mm 38mm
7"WD	High Low	45x 9x 11mm 57mm
8"WD	High Low	38x 7x 12mm 69mm
9"WD	High Low	32x 6x 14mm 78mm
10"WD	High Low	30x 5.5x 17mm 80mm

- Back Focal Length: 24.28
- EFL (mm): 18-108
- Exit Pupil Position: 238.60
- Field Angle: 1/2 (HxV) Wide 19° 58' x 15° 06' / Tele 3° 23' x 2° 55'
- Filter Diameter: Ø52 P=0.75
- Focus Control: Manual
- Focusing range from front of lens (m): 0.13 - inf.
- Format: 2/3"
- F Stop: 2.5-Close
- Iris Control: Manual
- Mount: C
- Object Area (mm): at M.O.D. (HxV) 1/2" Wide 183 x 142 / Tele 31 x 24
- Weight: (g) 595
- Zoom Control: Manual

Software Overview

HD

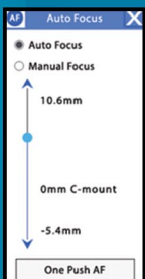


Camera Control Panel

Take full control of your image with this easy-to-use menu with slider bars. Turn on auto white balance or auto exposure to improve your inspection. Includes, exposure, color, white balance, sharpness and many more.

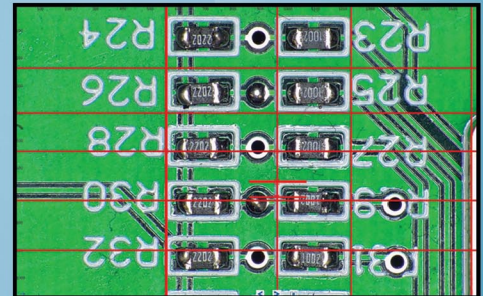
SCIENSCOPE

The Auto-Cam includes a full suite of integrated software tools to make your inspection and documentation process simple. Including image and video capture, split-screen viewing, camera controls and auto-focus menu.



Auto Focus Tools

Use the region of interest tool to make inspection easy. Click around the screen to automatically focus on any unfocused area of interest to bring it into sharp view. Includes controllable auto focus menu.



Easy To Use Comparative Measurement Grid Tools

Use the built-in video caliper to perform comparative measurements or use them as a quick and easy gauging tool!

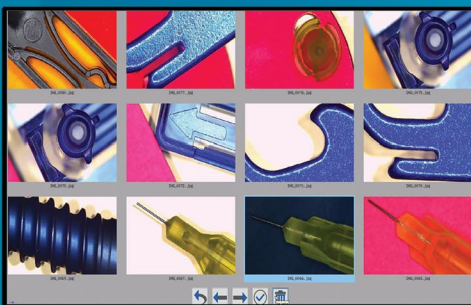
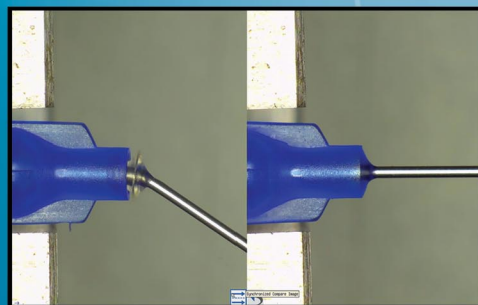


Image Management And Display Gallery

Quickly scan through previously saved image and video captures. The image gallery allows for quick image pull-up and the ability to sort and delete images no longer needed.



Split Screen Image View Display Option

Quickly and easily compare a previously captured images to a live image. Excellent when used a pass/fail tool or for training. Use the system to capture images of defects that you want your operators to avoid and compare



Image Processing And Enhancement Tools

The HDR or High Dynamic Range feature will help you find that tricky defect by quickly toggling to a high contrast data mode or back to a bright, clean, high gain mode.

Software Tools

Simple 1 Click Software Tool Bar



ALL DIGITAL AUTO FOCUS SYSTEMS

PACKAGE #	STANDS		LIGHTING						PACKAGES
	SB-BM2-DO DUAL ARM BOOM STAND	SB-BM2-RO GLIDING ARM BOOM STAND	SB-CL2-FX HEAVY DUTY ARTICULATING STAND	SP-76-18 ERGO-POST TABLE TOP STAND	IL-LED-R3 POLARIZED LED LIGHT	IL-LED-R2D DIFFUSED LED DOME LIGHT	IL-LED-E2D DIFFUSED COMPACT LED LIGHT	IL-LED-E1Q QUADRANT CONTROLLED LED LIGHT	
MAC-PK1-R3-AF				•	•				
MAC-PK1-DM-AF				•		•			
MAC-PK1-E2D-AF				•			•		
MAC-PK3-R3-AF		•			•				
MAC-PK3-DM-AF		•			•				
MAC-PK3-E2D-AF		•					•		
MAC-PK5-R3-AF		•			•				
MAC-PK5D-R3-AF	•				•				
MAC-PK5-DM-AF		•				•			
MAC-PK5D-DM-AF	•					•			
MAC-PK5-E2D-AF		•					•		
MAC-PK5D-E2D-AF	•						•		
MAC-PK5-E1Q-AF		•						•	
MAC-PK5D-E1Q-AF	•							•	

MOUNTING & STANDS

* FOCUS MOUNTS

REQUIRED* ON ALL BOOM ARM AND ARTICULATING ARM STANDS



SB-AB-SZ
MICROSCOPE FOCUS MOUNT

BOOM ARM STANDS



SB-BM2-RO *
GLIDING BOOM STAND



SB-BM2-DO *
DUAL BOOM STAND

LAB STANDS



SP-76-18
EXTENDED POST STAND

ARTICULATING ARM STANDS



SB-CL2-FX *
HEAVY DUTY ARTICULATING STAND

LIGHTING



IL-LED-R3
POLARIZED LED RING LIGHT



IL-LED-R2D
DIFFUSED LED DOME LIGHT



IL-LED-E2D
DIFFUSED COMPACT LED RING LIGHT



IL-LED-E1Q
QUADRANT CONTROLLED LED RING LIGHT

MAC-PK1-R3-AF

MACRO video zoom optics on an extended post stand with NEW high intensity LED ring light with polarizer (IL-LED-R3). New 1080p Auto-focus camera (Includes SD Card, HDMI cable, and mouse) with 23" HD LCD monitor and capture software.



- STAND**
SP-76-18
Ergo-Post Table Top Stand
- LIGHTING**
IL-LED-R3
Polarized LED Light
- CAMERA**
CC-HDMI-AF2
Auto Focus Cam

MAC-PK3-DM-AF

MACRO video zoom optics on HEAVY DUTY articulating arm with 15" vertical post with NEW diffused LED dome light (IL-LED-R2D). New 1080p Auto-focus camera (Includes SD Card, HDMI cable, and mouse) with 23" HD LCD monitor and capture software.



- STAND**
SB-CL2-FX
Heavy Duty Articulating
- LIGHTING**
IL-LED-R2D
Diffused LED Dome Light
- CAMERA**
CC-HDMI-AF2
Auto Focus Cam

MAC-PK5-E2D-AF

MACRO video zoom optics on gliding arm boom stand with diffused compact LED ring light (IL-LED-E2D) New 1080p Auto-focus camera (Includes SD Card, HDMI cable, and mouse) with 23" HD LCD monitor and capture software.



- STAND**
SB-BM2-R0
Gliding Arm Stand
- LIGHTING**
IL-LED-E2D
Diffused Compact LED
- CAMERA**
CC-HDMI-AF2
Auto Focus Cam

MAC-PK5D-E1Q-AF

MACRO video zoom optics on dual arm boom stand with quadrant controlled LED ring light. New 1080p Auto-focus camera (Includes SD Card, HDMI cable, and mouse) with 23" HD LCD monitor and capture software.



- STAND**
SB-BM2-D0
Dual Arm Stand
- LIGHTING**
IL-LED-E1Q
Quadrant Controlled LED
- CAMERA**
CC-HDMI-AF2
Auto Focus Cam

SCIENSCOPE

VERSA CAM

1080P HD MACRO DIGITAL INSPECTION SYSTEMS



HD

CMOS

HDMI™

USB

SD

VERSA-CAM (CC-HDMI-CD2)

HD

CMOS

HDMI™

USB

SD

The new Versa-Cam from ScienScope is the next step in the evolution of our powerful line of digital HD cameras for microscopy. The Versa-Cam can be used as a "live image" HD (1080p) camera connected to a monitor using an HDMI cable or as a USB 2.0 camera with USB cable connected to any computer or Windows Tablet. Now the choice between live HD monitor inspection and high resolution USB camera capture and annotation is made at the camera...not between cameras.

Camera Overview

- ✓ Full Toolbar w/ Camera Controls
- ✓ DC 12V/2A Adaptor
- ✓ 1080p Resolution
- ✓ Compatible Displays: 19"+
- ✓ HDMI 60FPS and USB 30FPS
- ✓ Weight of 0.47 kg (1.0lbs)
- ✓ 2.8µm / 2.8µm Pixel Size
- ✓ Exposure of 0.1ms~999ms
- ✓ 1080P/Sony IMX236(C) Sensor Sized at 1/2.8"(5.38x3.02)
- ✓ Dimentions of 78mm (3.07") x 70mm (2.76") x 92mm (3.62")



System Overview

SCIENSCOPE



SYSTEM DISPLAYED (PART# MAC-PKSD-R3)

Includes Our VersaCam 1080p HD Inspection Camera, Image Capture Software, a Dual Arm Boom Stand, LED Ring Light with adapter, 24" monitor, mouse, 10gb sd card, HDMI Cable & Power Adapter.

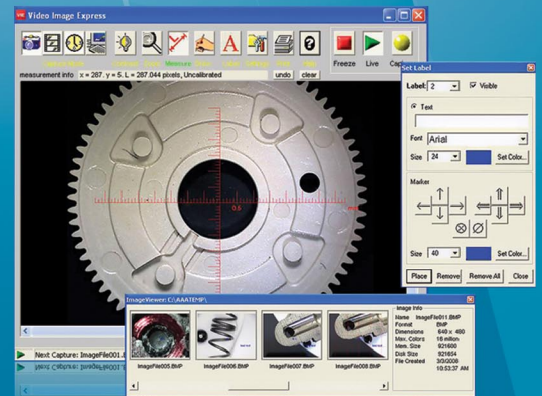
FEATURING

- Macro Zoom Technology
- 1080p HD 60fps
- Imbedded camera control software
- Capture images and video to SD card
- Fast auto and manual exposure
- Full 1080p 60 fps frame rates
- Connect, view, and control via WiFi
- ROI white balance
- Real-time color adjustments
- Digital zoom
- Image Comparison
- Choice of stands and lighting

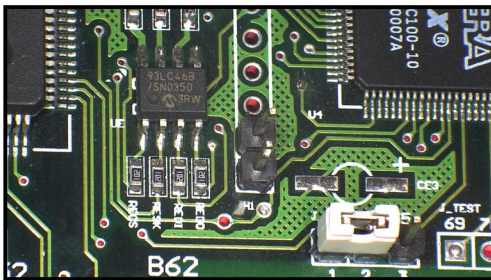
VersaCam (CC-HDMI-CD2) | Camera Specifications

Image sensor	1/2.86 Inch Panasonic FULL HD 2.0 Megapixel	Edge enhancements /Sharpening	Yes
Effective pixels	1920 x 1080	Freeze image	Yes
Frame rate	60fps	HDR	Yes
Definition	More than 1200lines (the highest level)	Cross hair	Multi-color, small or large
Housing	Aluminum	Horizontal/Vertical Lines	Multi-color, two lines for each
White balance	Automatic/Manual/Continuous	Noise Reduction	Support
Brightness control	Automatic/Manual/Continuous	SD card slot	Support up to 32GB SD card
Color	R/G/B adjustable	HDMI	1080p
Edge enhancement:	Yes	USB	USB 2.0
OSD:	Yes, in HDMI mode		

INCLUDES USB CAMERA SOFTWARE



APPLICATIONS



Electronics

Capable of a remarkably large field of view or IPC spec magnification (Up to 60x) the MAC3 system makes electronics inspection a more comfortable an efficient process. If you need to document your work, images or video can be captured with one click of the mouse and stored to a removable SD card. You can also rework or repair in comfort with an ergonomically placed monitor (No eyepieces!) and easy to

Medical Devices

Whether you are inspecting catheters, stents, pacemakers or surgical implements, medical devices require 100% inspection with the utmost possible scrutiny. Inspect, document, and compare with ease and confidence. Use the integrated side-by-side capture to live image comparison feature to be certain that you are seeing a defect.

Macro Documentation

Macro photography is extreme close-up photography, usually of very small subjects, in which the size of the subject in the photograph is greater than life size. The Macro Systems with Versa-CAM makes macro biological or industrial image capture and observation simple. With easy to control optics, lighting, and camera functions macro photography for education or industry is a snap.



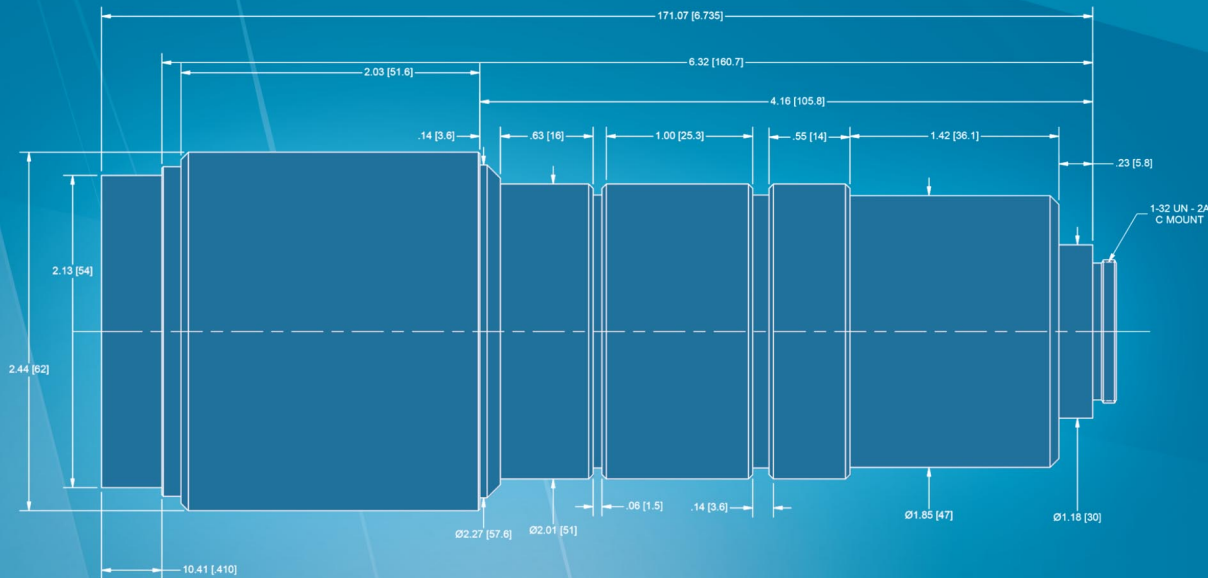
ALL SYSTEMS INCLUDE THE SCIENSCOPE CC-97-LN1 MACRO ZOOM LENS

The ScienSCOPE CC-97-LN Macro Zoom Lens with Close-up lens is perfect for a detailed inspection view. With crisp and clear imagery, this Lens is bound to meet your macro inspection needs. The Macro Zoom lens is ideal for quality assurance, biomedical imaging, or assembly applications where an easy-to-view, sharp and true-to-life magnified image of your product can mean the difference between a shippable, top-quality end product and a costly manufacturing failure. The Macro Zoom lens has the most Depth of Field and Field of View available from a video lens with all adjustment at your fingertips such as zoom, focus, and iris control. Our Macro Zoom lens is designed for large fielded views, large range of working distance, and large depth of field applications. Range from 7" - 12" of working distance with a close-up/cover lens and from 11" to infinity without the close-up/cover lens. Up to 61.9X magnification.

FEATURING

- Maximum Of 98x With 23" Monitor
- Maximum Of 71mm FOV At 10" WD
- High Depth Of Field
- Manual Iris
- Built To Last

LENS SPECIFICATIONS

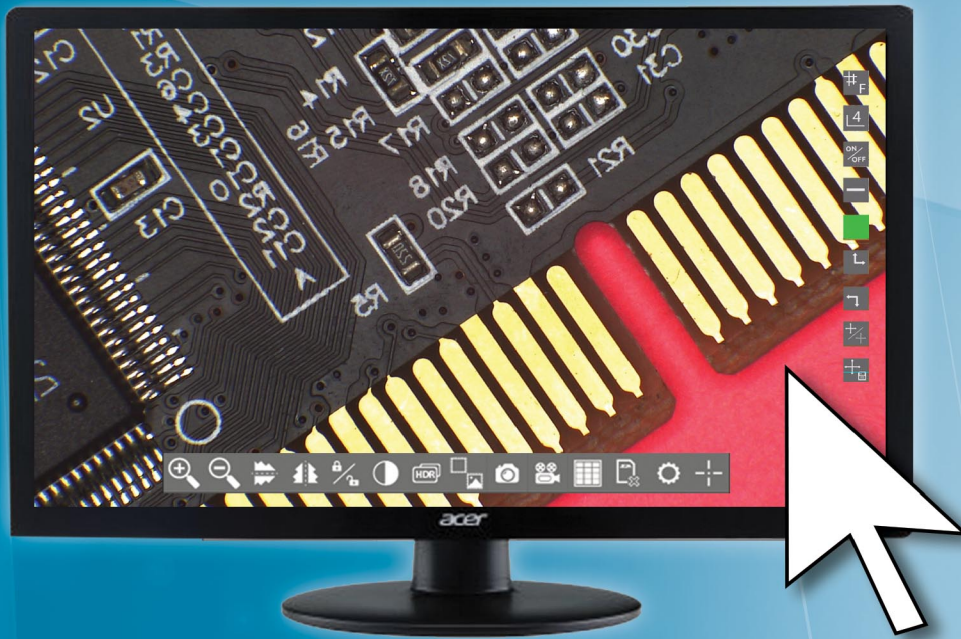


SPECS BASED ON 23" MONITOR

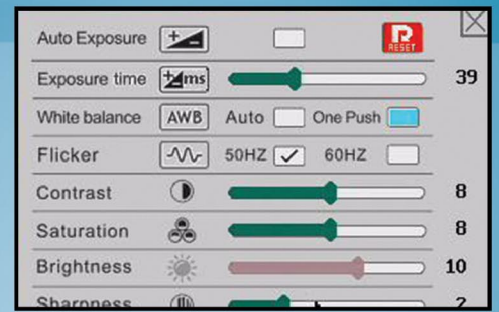
Working Distance	MAG	FOV (MM)
5"WD	High Low	98x 17x
7"WD	High Low	60x 11x
8"WD	High Low	52x 9x
9"WD	High Low	45x 8x
10"WD	High Low	40x 8x

- Back Focal Length: 24.28
- EFL (mm): 18-108
- Exit Pupil Position: 238.60
- Field Angle: 1/2 (HxV) Wide 19° 58' x 15° 06' / Tele 3° 23' x 2° 55'
- Filter Diameter: Ø52 P=0.75
- Focus Control: Manual
- Focusing range from front of lens (m): 0.13 - inf.
- Format: 2/3"
- F Stop: 2.5-Close
- Iris Control: Manual
- Mount: C
- Object Area (mm): at M.O.D. (HxV) 1/2" Wide 183 x 142 / Tele 31 x 24
- Weight: (g) 595
- Zoom Control: Manual

Software Overview

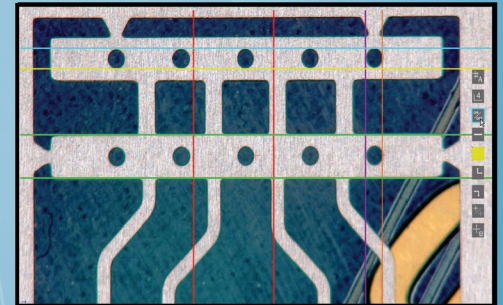


The versa-cam comes loaded with a full suite of simple and powerful image enhancement, capture, comparison, and memory management tools. Anyone can learn to use the camera to its full capability within minutes!



Video Control Panel

Use the region of interest tool to make inspection easy. Click around the screen to automatically focus on any unfocused area of interest to bring it into sharp view. Includes controllable auto focus menu.



Easy To Use Comparative Measurement Grid Tools

Use the built in video caliper to perform comparative measurements or use them as a quick and easy gauging tool.

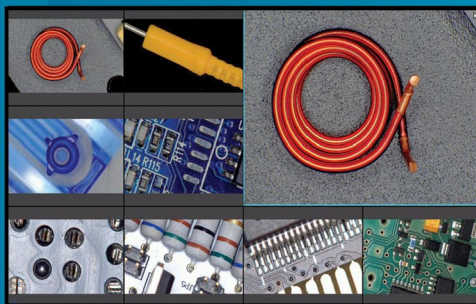
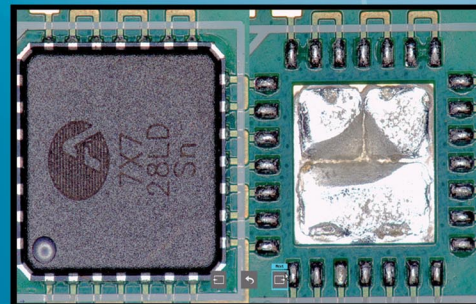


Image Management And Display Gallery

Quickly scan through previously saved image and video captures. The image gallery allows for quick image pull-up and the ability to sort and delete images no longer needed.



Split Screen Image View Display Option

Quickly and easily compare a previously captured images to a live image. Excellent when used a pass/fail tool or for training. Use the system to capture images of defects that you want your operators to avoid and compare

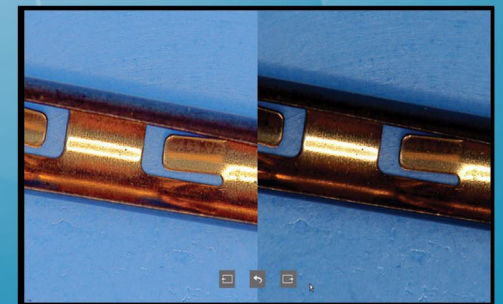
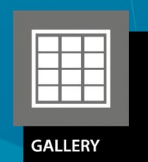
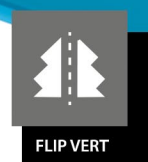
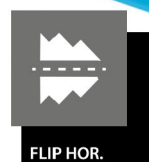


Image Processing And Enhancement Tools

The HDR or High Dynamic Range feature will help you find that tricky defect by quickly toggling to a high contrast data mode or back to a bright, clean, high gain mode.

Software Tools

Simple 1 Click Software Tool Bar



ALL DIGITAL VERSA CAM SYSTEMS

PACKAGE #	STANDS		LIGHTING						PACKAGES
	SB-BM2-DO DUAL ARM BOOM STAND	SB-BM2-RO GLIDING ARM BOOM STAND	SB-CL2-FX HEAVY DUTY ARTICULATING STAND	SP-76-18 ERGO-POST TABLE TOP STAND	IL-LED-R3 POLARIZED LED LIGHT	IL-LED-R2D DIFFUSED LED DOME LIGHT	IL-LED-E2D DIFFUSED COMPACT LED LIGHT	IL-LED-E1Q QUADRANT CONTROLLED LED LIGHT	
MAC-PK1-R3				•	•				
MAC-PK1-DM				•		•			
MAC-PK1-E2D				•			•		
MAC-PK3-R3			•		•				
MAC-PK3-DM			•		•				
MAC-PK3-E2D			•			•			
MAC-PK5-R3		•			•				
MAC-PK5D-R3	•				•				
MAC-PK5-DM		•				•			
MAC-PK5D-DM	•					•			
MAC-PK5-E2D		•					•		
MAC-PK5D-E2D	•						•		
MAC-PK5-E1Q		•						•	
MAC-PK5D-E1Q	•							•	

MOUNTING & STANDS

* FOCUS MOUNTS

REQUIRED* ON ALL BOOM ARM AND ARTICULATING ARM STANDS



SB-AB-SZ
MICROSCOPE FOCUS MOUNT

BOOM ARM STANDS



SB-BM2-RO *
GLIDING BOOM STAND



SB-BM2-DO *
DUAL BOOM STAND

LAB STANDS



SP-76-18
EXTENDED POST STAND

ARTICULATING ARM STANDS



SB-CL2-FX *
HEAVY DUTY ARTICULATING STAND

LIGHTING



IL-LED-R3
POLARIZED LED LIGHT



IL-LED-R2D
DIFFUSED LED DOME LIGHT



IL-LED-E2D
DIFFUSED COMPACT LED RING LIGHT



IL-LED-E1Q
QUADRANT CONTROLLED LED RING LIGHT

MAC-PK1-R3

MACRO video zoom optics on an extended post stand with NEW high intensity LED ring light with polarizer (IL-LED-R3). Features NEW 1080p HDMI/USB camera (Includes SD card, HDMI cable, USB cable and mouse) with 23" HD LCD monitor and capture software.



- STAND**
SP-76-18
Ergo-Post Table Top Stand
- LIGHTING**
IL-LED-R3
Polarized LED Light
- CAMERA**
CC-HDMI-CD2
1080p HD Versa Camera

MAC-PK3-DM

MACRO video zoom optics on HEAVY DUTY articulating arm with 15" vertical post with NEW diffused LED dome light (IL-LED-R2D). Features NEW 1080p HDMI/USB camera (Includes SD card, HDMI cable, USB cable and mouse) with 23" HD LCD monitor and capture software.



- STAND**
SB-CL2-FX
Heavy Duty Articulating
- LIGHTING**
IL-LED-R2D
Diffused LED Dome Light
- CAMERA**
CC-HDMI-CD2
1080p HD Versa Camera

MAC-PK5-E2D

MACRO video zoom optics on gliding arm boom stand with diffused compact LED ring light (IL-LED-E2D) Features NEW 1080p HDMI/USB camera (Includes SD card, HDMI cable, USB cable and mouse) with 23" HD LCD monitor and capture software.



- STAND**
SB-BM2-R0
Gliding Arm Stand
- LIGHTING**
IL-LED-E2D
Diffused Compact LED
- CAMERA**
CC-HDMI-CD2
1080p HD Versa Camera

MAC-PK5D-E1Q

MACRO video zoom optics on dual arm boom stand with quadrant controlled LED ring light. Features NEW 1080p HDMI/USB camera (Includes SD card, HDMI cable, USB cable and mouse) with 23" HD LCD monitor and capture software.



- STAND**
SB-BM2-D0
Dual Arm Stand
- LIGHTING**
IL-LED-E1Q
Quadrant Controlled LED
- CAMERA**
CC-HDMI-CD2
1080p HD Versa Camera

SCIENSCOPE

MAC3 HD LCD

MACRO DIGITAL INSPECTION SYSTEMS



HD

CMOS

HDMI

USB

SD

MAC3 HD LCD (CC-CMC-12H)

HD CMOS HDMI USB SD

Sciencescope's industry standard Macro video/digital inspection systems now feature the powerful and stunning clarity of the MAC3 LCD Camera. The systems, built around our versatile macro lens, now have even more crystal-clear imaging thanks to Macro HD Technology! Seeing is believing so contact us for an onsite demo today! Now the choice between live HD monitor inspection and high resolution USB camera capture and annotation is made at the camera...not between cameras.

Camera Overview

- ✓ 1080p HD Resolution
- ✓ Frame Rate: 60FPS
- ✓ Sensor : CMOS; 1/2.5"
- ✓ Magnification: 7.75X-60X (based on WD)
- ✓ Field of View (FOV): 33.75mm - 4.75mm (based on WD)
- ✓ Working Distance(WD) 4.5"-12"
- ✓ Camera Mount: C-Mount
- ✓ Focus Control: Manual
- ✓ Iris Control: Manual
- ✓ User Friendly Image/Video Capturing Software



System Overview

SCIENSCOPE



SYSTEM DISPLAYED
(PART# MAC-PKSD-R3)

Includes Our VersaCam 1080p HD Inspection Camera, Image Capture Software, a Dual Arm Boom Stand, LED Ring Light with adapter, 24" monitor, mouse, 10gb sd card, HDMI Cable & Power Adapter.

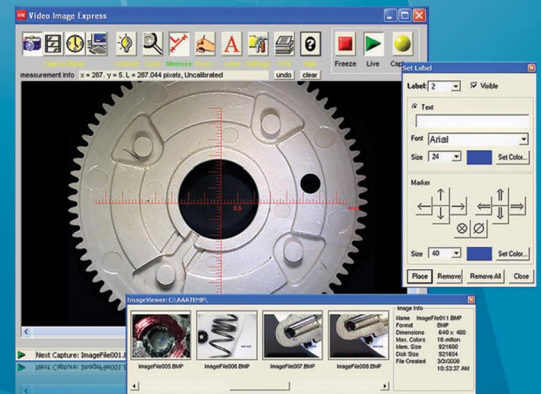
FEATURING

- Macro Video Lens and HD Camera
- Onscreen Camera Control Menu
- Image gallery and image/video preview and playback
- Vertical and horizontal line generators with 8 presets
- Onscreen mouse-controlled video settings
- Digital image sharpening and frame averaging 2 USB 2.0 ports
- Auto White balance
- Auto shutter and brightness
- Image Comparison
- 12" LCD monitor
- 2 USB 2.0 ports

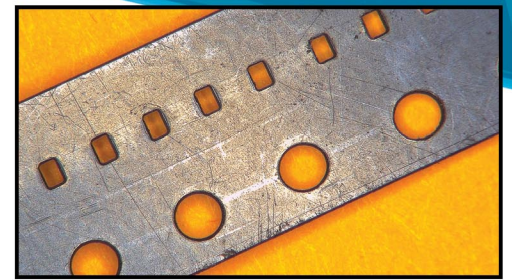
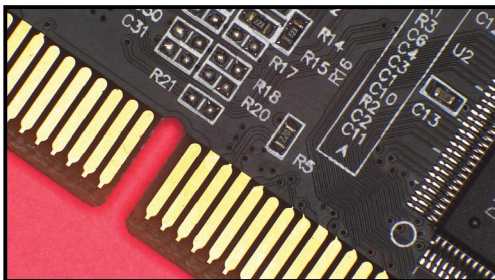
Mac3 LCD (CC-CMC-12H) | Camera Specifications

Image sensor	1/2.86 Inch Panasonic FULL HD 2.0 Megapixel	Edge enhancements /Sharpening	Yes
Effective pixels	1920 x 1080	Freeze image	Yes
Frame rate	60fps	HDR	Yes
Definition	More than 1200lines (the highest level)	Cross hair	Multi-color, small or large
Housing	Aluminum	Horizontal/Vertical Lines	Multi-color, two lines for each
White balance	Automatic/Manual/Continuous	Noise Reduction	Support
Brightness control	Automatic/Manual/Continuous	SD card slot	Support up to 32GB SD card
Color	R/G/B adjustable	HDMI	1080p
Edge enhancement:	Yes	USB	USB 2.0
OSD:	Yes, in HDMI mode		

INCLUDES USB CAMERA SOFTWARE



APPLICATIONS



Electronics

Macro Systems with the ScienScope Mac3 LCD Camera makes electronics inspection an even more comfortable and efficient process. Document your work! Images or video can be captured with one click of the mouse and stored to a removable SD card. For high volumes of documentation use WiFi to connect and capture images with your computer.

Medical Devices

Keep a sharp focus, no matter what the application! Whether you are inspecting catheters, stents, pacemakers, or surgical implements, medical devices require 100% inspection with the greatest possible scrutiny. The quality of the ScienScope Mac3 LCD makes it even easier to inspect, document, and compare with confidence.

Aerospace & Defense

With perhaps the widest variety of applications, the aerospace and defense industries, can benefit the most with autofocus technology. From fan blades to fasteners, electronics, and hydraulics, the Mac3 LCD systems from ScienScope can make unusual surfaces and geometries an easy inspection process. Now you can place your focus on quality rather than set-up and procedure with the HD 1080p ScienScope Mac3 LCD.



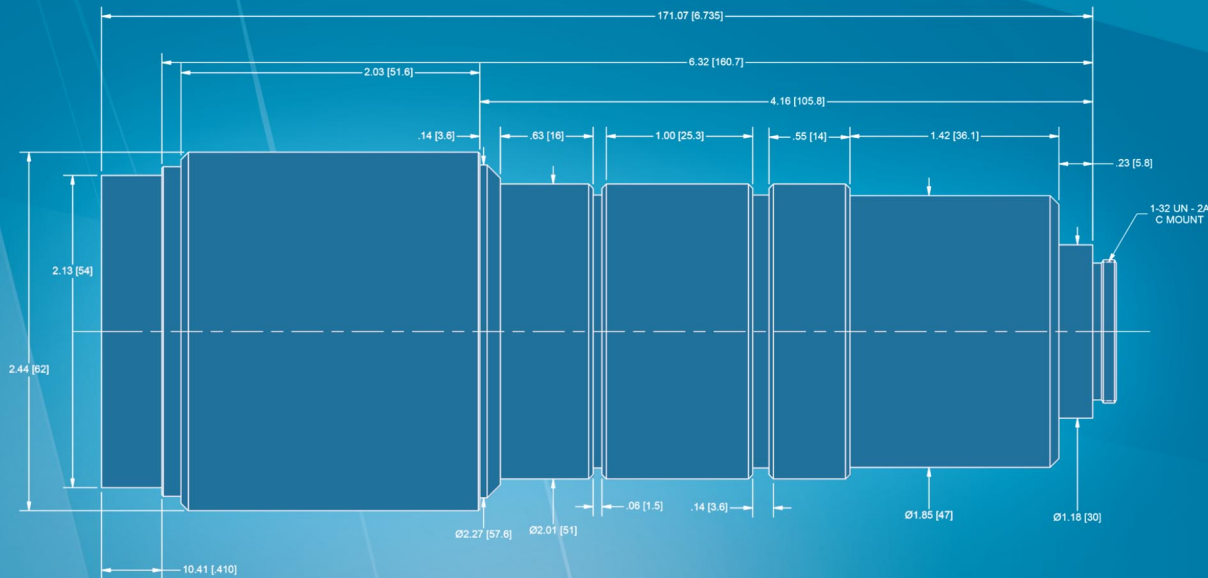
ALL SYSTEMS INCLUDE THE SCIENSCOPE CC-97-LN1 MACRO ZOOM LENS

The ScienScope CC-97-LN Macro Zoom Lens with Close-up lens is perfect for a detailed inspection view. With crisp and clear imagery, this Lens is bound to meet your macro inspection needs. The Macro Zoom lens is ideal for quality assurance, biomedical imaging, or assembly applications where an easy-to-view, sharp and true-to-life magnified image of your product can mean the difference between a shippable, top-quality end product and a costly manufacturing failure. The Macro Zoom lens has the most Depth of Field and Field of View available from a video lens with all adjustment at your fingertips such as zoom, focus, and iris control. Our Macro Zoom lens is designed for large fielded views, large range of working distance, and large depth of field applications. Range from 7" - 12" of working distance with a close-up/cover lens and from 11" to infinity without the close-up/cover lens. Up to 61.9X magnification.

FEATURING

- Maximum Of 34x With 12" Monitor
- Maximum Of 31mm FOV At 10" WD
- High Depth Of Field
- Manual Iris
- Built To Last

LENS SPECIFICATIONS



SPECS BASED ON 5 MEGA PIXEL IMAGE ON 12" MONITOR

Working Distance	MAG	FOV (MM)
7"WD	High Low	34x 13x 7.5mm 27mm
8"WD	High Low	28x 10x 9mm 25mm
9"WD	High Low	25x 9.5x 10mm 27mm
10"WD	High Low	22x 8x 11mm 31mm

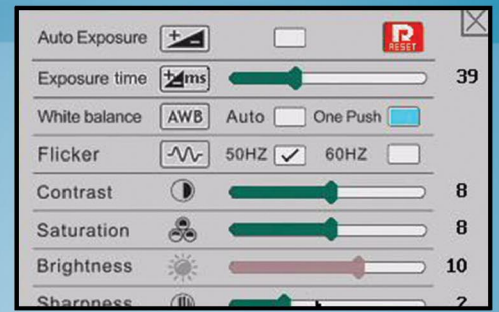
- Back Focal Length: 24.28
- EFL (mm): 18-108
- Exit Pupil Position: 238.60
- Field Angle: 1/2 (HxV) Wide 19° 58' x 15° 06' / Tele 3° 23' x 2° 55'
- Filter Diameter: Ø52 P=0.75
- Focus Control: Manual
- Focusing range from front of lens (m): 0.13 - inf.
- Format: 2/3"
- F Stop: 2.5-Close
- Iris Control: Manual
- Mount: C
- Object Area (mm): at M.O.D. (HxV) 1/2" Wide 183 x 142 / Tele 31 x 24
- Weight: (g) 595
- Zoom Control: Manual

Software Overview

HD

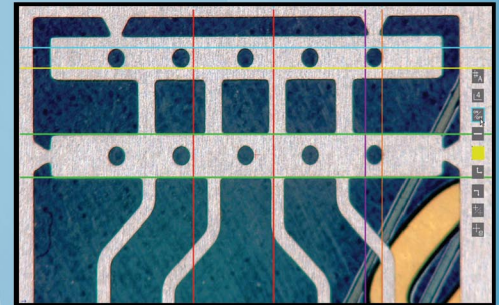


The versa-cam comes loaded with a full suite of simple and powerful image enhancement, capture, comparison, and memory management tools. Anyone can learn to use the camera to its full capability within minutes!



Video Control Panel

Use the region of interest tool to make inspection easy. Click around the screen to automatically focus on any unfocused area of interest to bring it into sharp view. Includes controllable auto focus menu.



Easy To Use Comparative Measurement Grid Tools

Use the built in video caliper to perform comparative measurements or use them as a quick and easy gauging tool.

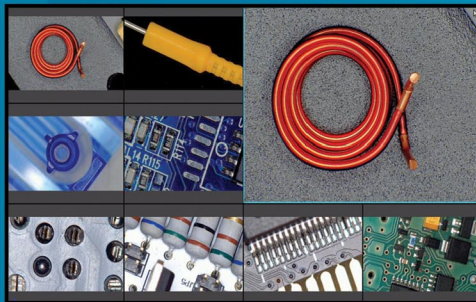
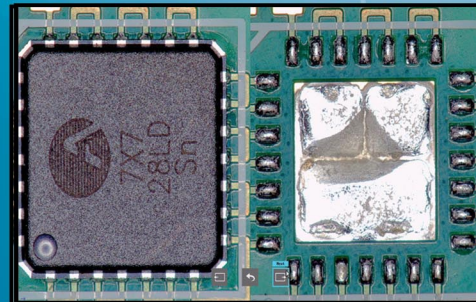


Image Management And Display Gallery

Quickly scan through previously saved image and video captures. The image gallery allows for quick image pull-up and the ability to sort and delete images no longer needed.



Split Screen Image View Display Option

Quickly and easily compare a previously captured images to a live image. Excellent when used a pass/fail tool or for training. Use the system to capture images of defects that you want your operators to avoid and compare

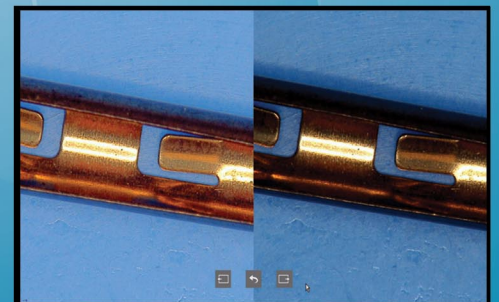
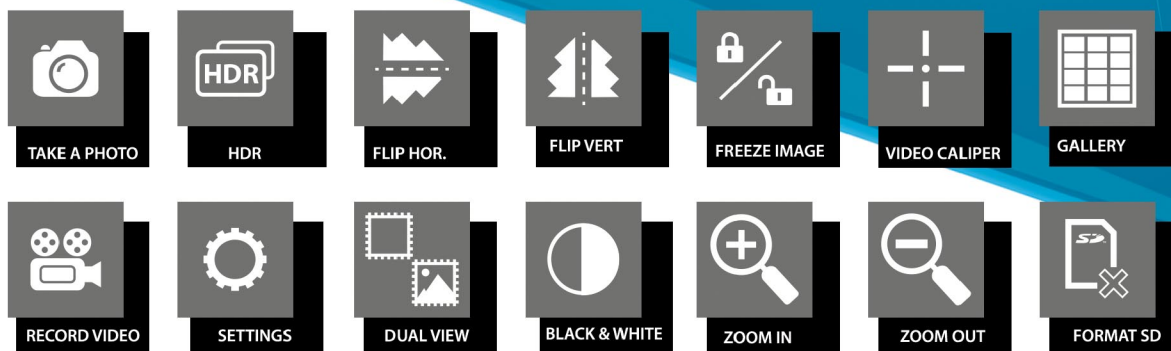


Image Processing And Enhancement Tools

The HDR or High Dynamic Range feature will help you find that tricky defect by quickly toggling to a high contrast data mode or back to a bright, clean, high gain mode.

Software Tools

Simple 1 Click Software Tool Bar



ALL DIGITAL MAC3 SYSTEMS

PACKAGE #	STANDS		LIGHTING						PACKAGES
	SB-BM2-D0 DUAL ARM BOOM STAND	SB-BM2-R0 GLIDING ARM BOOM STAND	SB-CL2-FX HEAVY DUTY ARTICULATING STAND	SP-76-18 ERGO-POST TABLE TOP STAND	IL-LED-R3 POLARIZED LED LIGHT	IL-LED-R2D DIFFUSED LED DOME LIGHT	IL-LED-E2D DIFFUSED COMPACT LED LIGHT	IL-LED-E1Q QUADRANT CONTROLLED LED LIGHT	
MAC3-PK1-R3				•	•				
MAC3-PK1-DM				•		•			
MAC3-PK1-E2D				•			•		
MAC3-PK3-R3			•		•				
MAC3-PK3-DM			•		•				
MAC3-PK3-E2D			•				•		
MAC3-PK5-R3		•			•				
MAC3-PK5D-R3	•				•				
MAC3-PK5-DM		•				•			
MAC3-PK5D-DM	•					•			
MAC3-PK5-E2D		•					•		
MAC3-PK5D-E2D	•						•		
MAC3-PK5-E1Q		•						•	
MAC3-PK5D-E1Q	•							•	

MOUNTING & STANDS

* FOCUS MOUNTS

REQUIRED* ON ALL BOOM ARM AND ARTICULATING ARM STANDS



SB-AB-SZ
MICROSCOPE FOCUS MOUNT

BOOM ARM STANDS



SB-BM2-R0 *
GLIDING BOOM STAND



SB-BM2-D0 *
DUAL BOOM STAND

LAB STANDS



SP-76-18
EXTENDED POST STAND

ARTICULATING ARM STANDS



SB-CL2-FX *
HEAVY DUTY ARTICULATING STAND

LIGHTING



IL-LED-R3
POLARIZED LED LIGHT



IL-LED-R2D
DIFFUSED LED DOME LIGHT



IL-LED-E2D
DIFFUSED COMPACT LED RING LIGHT



IL-LED-E1Q
QUADRANT CONTROLLED LED RING LIGHT

MAC3-PK1-R3

MACRO video zoom optics extended post stand, 1080p HD camera and 12" LCD monitor combination with NEW high intensity LED ring light with polarizer (IL-LED-R3). All systems include camera/monitor combo with 8GB SD card, wireless mouse, USB cable, power supply, and image capture software.



- STAND**
SP-76-18
Ergo-Post Table Top Stand
- LIGHTING**
IL-LED-R3
Polarized LED Light
- CAMERA**
CC-CMC-12H
12" Mac3 Camera Monitor

MAC3-PK3-DM

MACRO video zoom optics on heavy duty articulating arm with vertical post and clamp, 1080p HD camera and 12" LCD monitor combination with diffused LED dome light (IL-LED-R2D). All systems include camera/monitor combo with 8GB SD card, wireless mouse, USB cable, power supply, and image capture software.



- STAND**
SB-CL2-FX
Heavy Duty Articulating
- LIGHTING**
IL-LED-R2D
Diffused LED Dome Light
- CAMERA**
CC-CMC-12H
12" Mac3 Camera Monitor

MAC3-PK5-E2D

MACRO video zoom optics on gliding arm boom stand, 1080p HD camera and 12" LCD monitor combination with diffused compact LED ring light. (IL-LED-E2D). All systems include camera/monitor combo with 8GB SD card, wireless mouse, USB cable, power supply, and image capture software.



- STAND**
SB-BM2-R0
Gliding Arm Stand
- LIGHTING**
IL-LED-E2D
Diffused Compact LED
- CAMERA**
CC-CMC-12H
12" Mac3 Camera Monitor

MAC3-PK5D-E1Q

MACRO video zoom optics on dual arm boom stand, 1080p HD camera and 12" LCD monitor combination with quadrant controlled LED ring light. All systems include camera/monitor combo with 8GB SD card, wireless mouse, USB cable, power supply, and image capture software.



- STAND**
SB-BM2-D0
Dual Arm Stand
- LIGHTING**
IL-LED-E1Q
Quadrant Controlled LED
- CAMERA**
CC-CMC-12H
12" Mac3 Camera Monitor

FOR MORE INFORMATION PLEASE VISIT OUR WEBSITE AT
WWW.SCIENSCOPE.COM

