

# Infrared Heating Panels

ENERGY EFFICIENT ELECTRIC HEATING



Infrared heating revolutionises the way we heat buildings.  
Comfortable, long-lasting warmth, using less energy.

- ❑ ENERGY EFFICIENT
- ❑ THERMOSTATICALLY CONTROLLED
- ❑ COMFORTABLE, HEALTHY HEAT    ❑ EASY TO INSTALL

---

ELEGANT    ADAPTABLE    ECONOMICAL

---



Infrared heating specialist supplier since 2007

# WHITE HEATING PANELS with frame

## White framed infrared heating panel VCIR range

Our most popular heating panel used in homes and offices. The smooth powder coated surface and white frame give this panel a neat and crisp appearance. The lightweight aluminium construction means this panel can be mounted in virtually any type of building, including timber garden rooms, listed buildings and mobile homes.



### Lightweight aluminium heating panels for walls

300 watt heater	30cm x 90cm x 2.5cm	weight 3kg	MHVCIR300
400 watt heater	30cm x 120cm x 2.5cm	weight 3.5kg	MHVCIR400
600 watt heater	60cm x 90cm x 2.5cm	weight 5.5kg	MHVCIR600
800 watt heater	60cm x 120cm x 2.5cm	weight 7.5kg	MHVCIR800

### Lightweight aluminium heating panels for ceilings

350 watt heater	60cm x 60cm x 2.5cm	weight 3kg	MHVCIR350
500 watt heater	60cm x 90cm x 2.5cm	weight 5.5kg	MHVCIR500
700 watt heater	60cm x 120cm x 2.5cm	weight 7.5kg	MHVCIR700

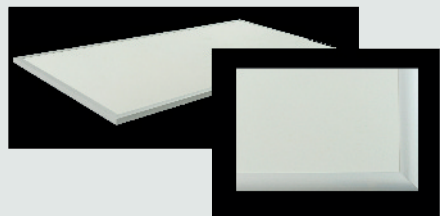
#### Technical detail

- Surface temperature between 80–125° C with thermal safety cut out to prevent over-heating.
- For wall mounting at picture height or direct ceiling mounting between 2 and 3 meters maximum. Vertical or horizontal.
- Screw fittings allow for small air gap for ventilation around the back of the heating panel.
- Made from lightweight aluminium.
- IP44 rated for use in bathrooms.

## Aluminium framed infrared heating panel Universal E range

The smooth polyester powder coated surface and brushed aluminium frame give this panel a modern elegant feel. Made from robust steel for a more substantial quality. Perfect for the modern busy home, offices, schools and hotels. Also available in black by special order for designer inspired interiors or dark walls and ceilings.

300 watt heater	60cm x 60cm x 2.5cm	weight 5.9kg	MHIRUE300
600 watt heater	60cm x 120cm x 2.5cm	weight 10kg	MHIRUE600
850 watt heater	80cm x 120cm x 2.5cm	weight 13.3kg	MHIRUE850



#### Technical detail

- Surface temperature 80–110° C with thermal safety cut out to prevent overheating.
- For wall or direct ceiling mounting height between 2 and 3 meters maximum.
- Easy fit mounting bracket. Allows for air gap and ventilation around the back of the panel.
- Made from a steel emitter panel with a brushed aluminium frame.
- IP44 rated for use in bathrooms.

# WHITE HEATING PANELS frameless

## Frameless infrared heating panel Universal Basic range

Our versatile Universal infrared heating panel is designed to fit in any situation, home, workplace, or public building. A more traditional looking panel heater, made from robust stove enamel coated steel for a tough and durable surface. The satin finish is easy to wipe clean and keep hygienically clean. Wall or ceiling mounted, the textured finish increases the heat emitting area by 2.5 times for a highly effective and more energy efficient heater.

300 watt heater 60cm x 60cm x 2.5cm weight 5kg MHIRUB300  
600 watt heater 60cm x 120cm x 2.5cm weight 9.5kg MHIRUB600  
850 watt heater 80cm x 120cm x 2.5cm weight 12.5kg MHIRUB850

A range of smaller heaters in very low wattages, these are not designed to be room heaters but rather as a localised heat source, perfect for under the office desk, at till points, beside an armchair, for fitting on church pews or in animal housing.

100 watt heater 32cm x 50cm x 2.5cm MHIRUK100  
200 watt heater 32cm x 75cm x 2.5cm MHIRUK200  
330 watt heater 32cm x 125cm x 2.5cm MHIRUK330  
400 watt heater 32cm x 150cm x 2.5cm MHIRUK400

### Technical detail

- Surface temperature 70–100° C with thermal safety cut out to prevent overheating.
- For vertical or horizontal mounting to wall or ceiling.
- Easy fit mounting bracket. Allows for air gap and ventilation around the back of the panel.
- Made from steel.
- IP44 rated for use in bathrooms.



## Frameless Cassette range for ceiling mounting only

Our cassette range are specifically designed to easily fit into the suspended ceiling, replacing either one or two ceiling tiles. With a very fine textured matt finish, this panel will blend in discretely. Also for direct ceiling mounting.

300 watt heater 60cm x 60cm x 2.5cm weight 5kg MHCASS300  
600 watt heater 60cm x 120cm x 2.5cm weight 9.5kg MHCASS600

### Technical detail

- Surface temperature 90–130° C with thermal safety cut out to prevent overheating.
- For ceiling mounting height between 2.4 and 4 meters maximum.
- Made from steel.
- IP44 rated for use in kitchen and toilet.



## GLASS PANELS

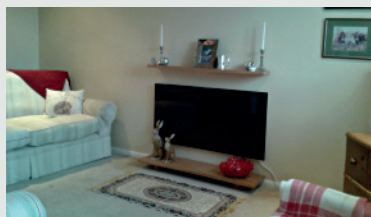
Elegant polished glass with gently rounded corners and hidden fixings which hold the panel away from the wall to give a stylish floating appearance, a truly stunning looking electric heater! Made from toughened safety glass set onto a backing plate for improved strength. Highly reflective white glass brings light and movement to a room when placed at picture height or on the ceiling. Black glass panels complement contemporary décor.

### Glass infrared heating panels in VCIR GW range

A slim and sleek design, made from 6mm glass set onto an aluminium backing plate with hidden fixing rails giving the appearance the glass is floating away from the wall.

600 watt heater 60cm x 90cm x 2.5cm weight 9kg MHVCGW600

800 watt heater 60cm x 120cm x 2.5cm weight 14kg MHVCGW800



#### Technical detail

- 6mm toughened safety glass.
- Slim aluminium backing plate.
- Ultra slim 3cm design when on the wall.
- Thermal safety cut out to prevent overheating.
- Available in white or black glass.
- IP44 for use in kitchens and bathrooms.

### Glass infrared heating panels in GS range

A slim design made from 4mm glass set onto a discrete box style framework and easy fit mounting bracket.

300 watt heater 60cm x 60cm x 2.5cm weight 10kg MHGSW 300

600 watt heater 60cm x 120cm x 2.5cm weight 18kg MHGSW 600

850 watt heater 80cm x 120cm x 2.5cm weight 22kg MHGSW 850



#### Technical detail

- 4mm toughened safety glass.
- Box style backing plate.
- Stylish slim 5cm design when on the wall.
- Thermal safety cut out to prevent overheating.
- Available in white or black glass.
- IP44 for use in kitchens and bathrooms.

# MIRROR HEATERS

The stunning design of our mirrors brings you a near invisible form of heating for your home. Both practical and functional, our bright and clear mirrors provide a brilliant solution for heating rooms where wall space is limited. Mirrors can provide the total heating needs to smaller rooms or as localised warmth in larger spaces. When used in bathrooms our hot surface mirrors do not mist up.

## Glass infrared heating panels in VCIR GM range

A slim and sleek design, made from 6mm glass set onto an aluminium backing plate with hidden fixing rails giving the appearance the glass is floating away from the wall.

400 watt heater 60cm x 60cm x 2.5cm weight 6kg MHVCGM400

600 watt heater 60cm x 90cm x 2.5cm weight 9kg MHVCGM600

### Technical detail

- 6mm toughened safety glass.
- Slim aluminium backing plate.
- Ultra slim 3cm design when on the wall.
- Thermal safety cut out to prevent overheating.
- IP44 for use in kitchens and bathrooms.



## Glass infrared heating panels in GSM range

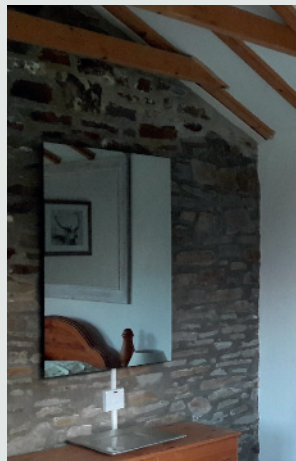
A slim design made from 6mm glass set onto a box style framework and easy fix mounting bracket.

300 watt heater 60cm x 60cm x 2.5cm weight 11kg MHGSM300

600 watt heater 60cm x 120cm x 2.5cm weight 18kg MHGSM600

### Technical detail

- 6mm toughened safety glass.
- Box style backing plate.
- Stylish slim 5cm design when on the wall.
- Thermal safety cut out to prevent overheating.
- IP44 for use in kitchens and bathrooms.



## Quality Assured

All our heating products are made from quality materials and carry the CE marking for quality compliance; they are built to give many years of service. Infrared heaters do not store heat or waste energy by heating another medium like water or oil: all electrical energy is used to heat the surface. They have excellent thermal qualities with around 98% electrical energy converted to heat so you can be assured of the best efficiency possible.

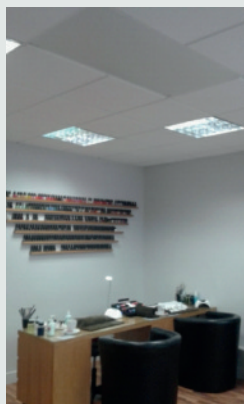
# COMMERCIAL HEATERS

Infrared heaters are often chosen for buildings where traditional warm air heating would be wasteful and inappropriate. The technology behind commercial heaters has advanced to bring you a smart looking heater with no light glare and a more gentle feel of infrared to make people comfortable even at lower air temperatures; it is this comfort factor that makes infrared heating so popular. These heaters will heat the air providing there is adequate insulation in the building to hold that warmth.

For workshops, garages and factories, which are open to the elements, a heater with light glare is more appropriate as these heat people and not the air, the feeling of infrared is quite powerful. We can offer a full range to suit any application, please ask for more information.

**Village halls** – Infrared heating can provide an affordable solution to heating village halls. It is easy to install by a local electrician with little disruption to hall use or redecorating costs. We recommend the use of a number of lower wattage heaters fitted to separate on/off or timer switches to provide gentle but effective warmth.

**Churches** – Churches can feel very cold due to the nature of the stone structure. When surrounded by cold objects we feel cold. We recommend higher wattage heaters to provide a stronger feeling of infrared warmth when only used for a short space of time.



**Offices** – Most users are happy turning down the thermostat by two degrees because they like the feeling of infrared warmth directly on the body and within the thermal mass of the building. Our white panel cassette range is specifically designed to slot into the suspended ceiling arrangement.

**Workshops, garages, factories** – Buildings which regularly have the doors open to the outside air are impossible to heat as the warmed air will always escape out, it is wasteful of energy and damaging to the environment. Industrial infrared heaters provide localised warmth to one area; they will not heat the air but simply provide direct comfort to people sat below the heater. Industrial heaters in a very high wattage can even be positioned at 5 meters high.

**Hot yoga** – Hot yoga has grown in popularity over the past five years; studios raise the room temperature to between 36 and 42 degrees C. Infrared heating is chosen for the health benefits; direct far infrared heat promotes blood circulation, conducting effectively around the body to aid longer muscle stretches and tissue repair. Traditional methods of hot blown air would be stifling in this situation; however infrared heating creates a comfortable feel to the studio which clients much prefer. We recommend our white panel heaters for studios, suggesting as much of the ceiling space as possible is covered with heaters to give an even heat distribution across the floor.



## White high temperature industrial infrared heater

A quality heater suitable for buildings with high ceilings, or very cold places as a localised heating source. Providing a stronger feeling of infrared. Installation between 3m and 6m high, heater can be ceiling mounted or hung lower on chains. A smart design suitable for offices, shops, public buildings or village halls, studios or warehouses.

1200 watts 155cm x 15cm x 6cm MHIH1200

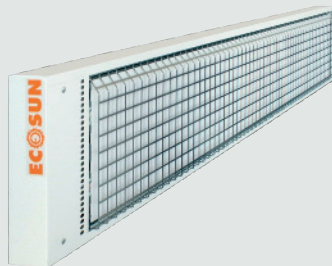
1800 watts 155cm x 25cm x 6cm MHIH1800

2400 watts 155cm x 25cm x 6cm MHIH2400

3000 watts 155cm x 35cm x 6cm MHIH3000

3600 watts 155cm x 35cm x 6cm MHIH3600

Protective grill attachment as shown optional extra



### Technical detail

- Thermal safety cut out to prevent overheating.
- Powder coated and galvanised casing IPX4 Cable gland IP44.
- Thermo crystal high emissivity plate.
- White and grey in colour.
- Ceiling mounted brackets included.

## Black high temperature terrace infrared heater

The modern clean and elegant design allows this heater to be used indoors or outside undercover, providing a stronger feeling of infrared. Installation between 2m and 4m high. Suitable for barn conversions, log cabins, garden rooms, cafes and fitness studios.

1000 watt 108cm x 14cm x 4.5cm MHTH1000

1500 watt 158cm x 14cm x 4.5cm MHTH1500



### Technical detail

- Thermal safety cut out to prevent overheating.
- Powder coated casing IPX4 Cable gland IP44.
- Thermo crystal high emissivity plate.
- Black in colour.
- Adjustable brackets allow variable angling from wall or ceiling fitting.

## Thermostatic programmers

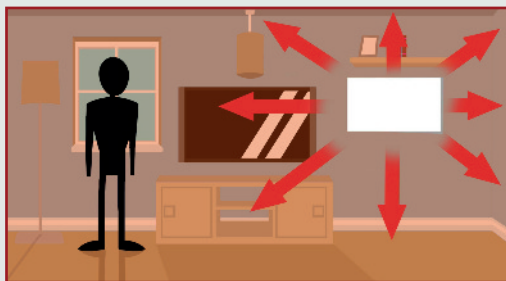
We offer a range of thermostatic programmers to suit the user's needs as infrared heaters do not have any controls on the unit itself. All heaters should be installed by a qualified electrician to a thermostat for best energy efficiency. Programming warmth per room as you need it will use less energy; modern programmers allow different times and temperature settings throughout the day and night.

**Wireless thermostatic programmers.** A simple solution for controlling heaters in one room or a few rooms in the house.

**Central touch control thermostatic programmers.** Provide one central point for controlling different zones of the house or office complex.

**Smart controls.** For those who need to change their heating settings from a central point or whilst away from the house.

Multiheat have been supplying infrared heating panels in the UK since 2007. We stock heaters from leading companies with up to 40 years experience in infrared heating development. Infrared heating has been widely used in Europe for many years as a normal form of central heating and as a modern alternative to storage heaters. Our products have a proven history for quality and reliability; many of our original heating panels are still in use today.



Infrared heating revolutionises the way we heat our homes. Infrared is highly effective and energy efficient. Infrared warms people and objects directly; this then gently warms the air creating an all round comfortable warm feeling. The air temperature can be lowered whilst still maintaining comfort. Being surrounded by warm objects makes us feel cosy.

Continuous research and development into the carbon technology inside our heaters provides you with a quality heater; the carbon element gives an even heat distribution across the whole surface area leading to improved effectiveness and a longer life span.

Electricity is the power of the future with more and more being generated by green sustainable sources. Electric infrared heating warms the thermal mass of a room, which then warms the air and keeps it warm, rather than just heating the air alone which becomes cool upon touching cold surfaces, so infrared is a more energy efficient way of heating the air.

Traditional central heating systems were introduced at a time when electricity and gas were very cheap; they did not need to be energy efficient.

Our heating panels only require a few minutes to reach optimum running temperature; this creates infrared energy in a very specific wavelength which is compatible to the human body and is a highly effective way of warming people directly. Infrared is the warmth we feel from the sun; it is natural to the body. We are designed to absorb and emit infrared which is why it feels so comfortable and healthy. A high surface temperature is required to give off infrared energy, a lower surface temperature will produce more convection of warmth and less of the benefits of infrared.