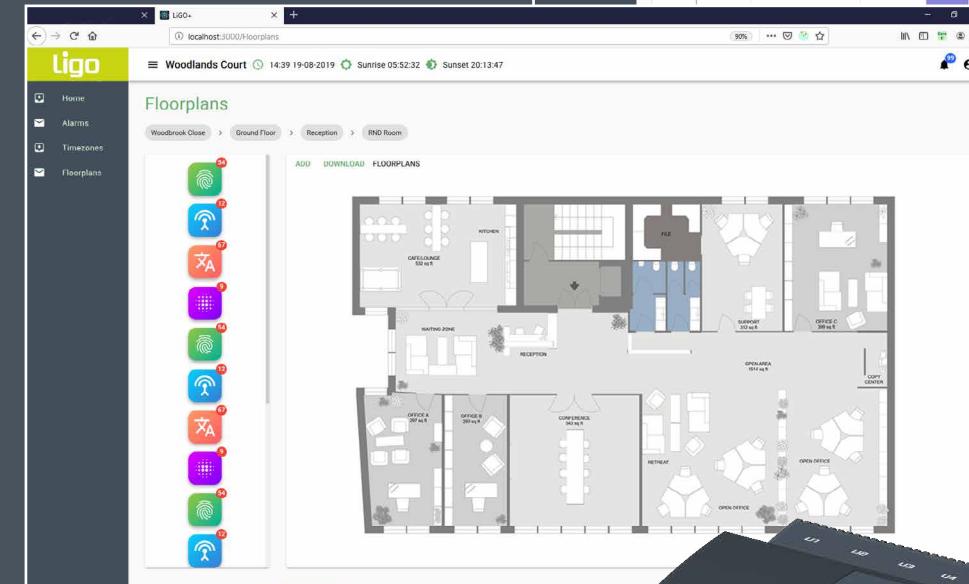
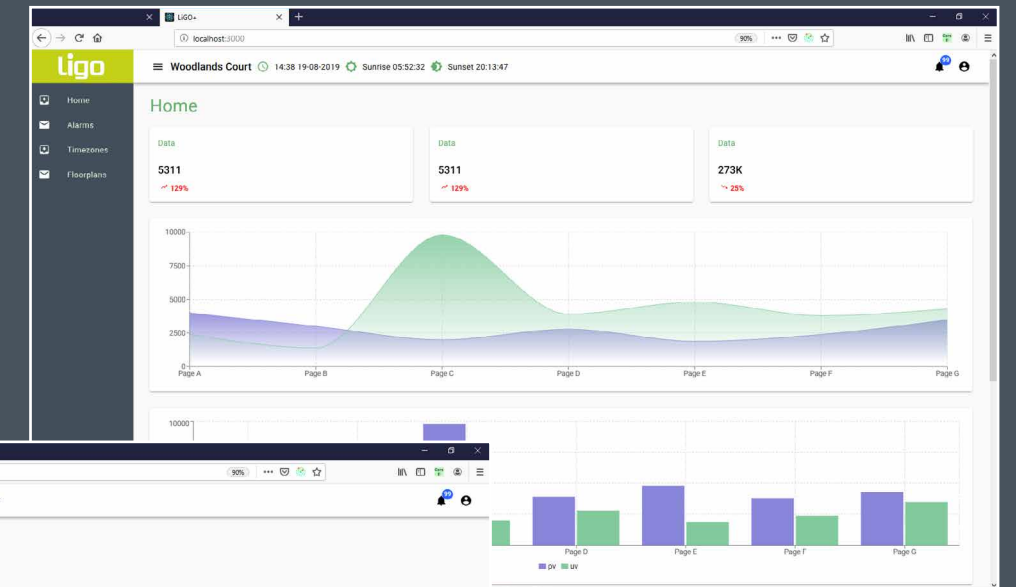


# ligo+



- SMART LIGHTING CONTROL
- ENERGY MONITORING
- EMBEDDED BUILDING FLOORPLANS
- COLOUR CONTROL AND TUNABLE WHITE LIGHT





## GOOD LIGHTING

- Lighting is responsible for 20% of all the electricity consumed by buildings in the UK. Non-domestic lighting accounting for 24 Million tonnes of CO<sub>2</sub> per year.
- LED lighting solutions still waste in excess of 30% of unnecessary consumption without suitable intelligent control.
- Up to 40% extra energy savings can be achieved over and above the use of LED when suitable tuning/scene setting is used with intelligent lighting controls.
- Good workplace lighting is an essential part in developing work environments that support well-being and performance, and reduce the likelihood of employee stress, absenteeism, and industrial accidents.
- Worker controlled lighting and lighting solutions tailored to the individual needs of workers have considerable potential for enhancing employees' work satisfaction and enhancing retention.

Sources: Kuller / UK Health and Safety Executive / Carbon Trust

## ABOUT OPEN TECHNOLOGY

Open Technology have developed the LiGO+ specifically to meet today's demanding lighting control schemes. The LiGO+ easily connects with other intelligent building systems and tomorrow's IoT environment.

We work directly with end users, consultants and contractors to ensure the LiGO+ technology gives the lighting control and connectivity, demanded by our customers.

A quick ROI can be achieved based on energy reduction and maintenance savings through improved monitoring and control of your high value LED estate.

With over 10 years' experience in the intelligent lighting controls market, our engineering team will enable the benefits of the rich feature set of LiGO+ to be readily achieved on even the most complex projects.

Alternatively, if you are a lighting supplier, we provide the LiGO+ and support for on-sale, complete with your own branding and features if so required. Please contact us to discuss your requirements further.



# liGo+ Intelligent Lighting Control

## Time Control

Lighting output and settings can be matched to your building's exact occupancy times, adapt to changes in daylight saving time and even accommodate public holidays.

## Integration

LiGO+ can be easily integrated into Building Management Systems (BMS) or any other 3rd party system that is open protocol - to ensure that all systems work together to deliver full functionality and maximum savings.

## Presence/Absence Detection

Lights switch on or off when presence or absence is detected. This delivers optimal energy savings whilst ensuring the building is always ready for use. Run-on timers can ensure that people aren't left in the dark when people are seated and the "corridor hold" feature ensures a room entrance/exit is lit whilst the room is occupied, essential for the office environment.

## Emergency Lighting/Reporting

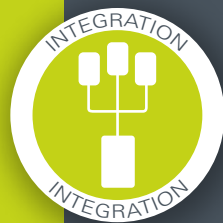
LiGO+'s simple built-in 'Test Scheduler' enables functional and duration tests to be set up then executed automatically. Results can be stored in the system or automatically sent via email. LiGO+ also supports central battery systems according to BS5266-1 BS EN50171 Central Power Supply Systems and BS EN 62034 Automatic Test Systems for Battery Powered Emergency Escape Lighting.

## Daylight Harvesting

External light not only allows you to create a more natural, enjoyable environment, it's also free! Automatic switching or dimming ensures light levels respond to maximise and complement the available daylight. Window Edge Dimming saves more energy by proportionally reducing the output of lights near the window.

## Scene Setting

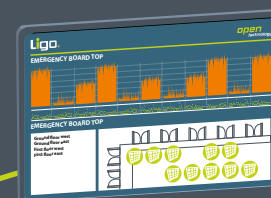
Light levels and scene effects can be programmed according to the changing uses of a building. These can then be automatically programmed and controlled via web login or changed at the touch of a button.



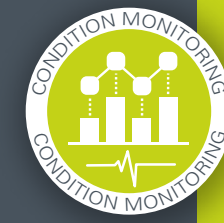
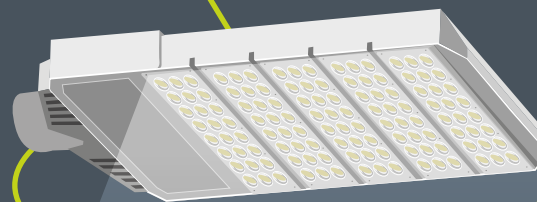
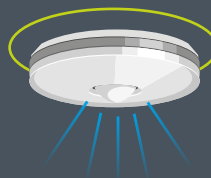
Building monitoring



Energy monitoring



LiGO dashboard



## Dimming

Light levels can be controlled according to changing uses of the building, for example lowering output when the building is being cleaned in the evenings. This drives further savings whilst ensuring the building is still functional, also dimming the lighting from off to on and on to off can add many more hours of run time to the ballasts. Specialist features such as dusk/dawn dimming control for Pharmco laboratories are available as standard.

## Condition Monitoring

LiGO+ continuously monitors every component of the system and records the hours run and output level for each. Any failure in a light fixture is automatically reported and can be used as 'hard evidence' for resolving warranty claims.

## Circadian Rhythm Lighting

LiGO+ can utilise circadian rhythm lighting using different colour temperature fittings, altered throughout the day. This affects the biological response of the body in order to increase productivity and wellness, especially in learning environments.

## External Lighting

External lighting is often overlooked within lighting schemes. With LiGO+ a combination of dusk/dawn times along with outside light sensing can be utilised to either control fixed loads of lighting (relay controlled) or, using DALI fittings, reduce energy by only providing minimum level of light that is required, and increasing when movement is detected.

## LED Control - Hours Run/ LED Maintenance

Your LED real estate is one of the largest investments in lighting that a building owner makes, yet many control systems will just treat LED like an incandescent lamp. With LiGO+ we understand LED, and how to get the longest life from your LED estate. With the runtimes of fittings being stored and logged within LiGO+ it's easy to go back to a manufacturer's claim of 50k hours when the fitting has only lasted 800!

## Energy Monitoring

LiGO+ can enable energy usage to be estimated through virtual metering or, where sub metering is provided, accurate measurements can be taken to meet legislation and also be used for tenant billing.

## WHY LiGO+ IS THE WAY TO GO

Our innovative LiGO+ system is installed in a diverse portfolio of buildings, including small/large retail premises, offices, pharma laboratories, schools, universities, hospitals, galleries, museums, rail stations and logistic depots, with the common result of achieving impressive cost and energy savings as well as improved environments for the buildings occupants and users. The LiGO+ web pages allow users to set up the system, create reports and adjust settings. It gives users access to a range of easy to use features including: time zone control, emergency override, alarm reporting, energy graphs, and emergency light test reporting with NO ongoing licence or subscription fee.

LiGO+ is based on the manufacturer-independent DALI standard that ensures interchangeability and interoperability of lighting system components. This makes it possible to create flexible, cost-effective and decentralised lighting systems. DALI addressable solutions can function as a standalone system or as part of a building management system. The LiGO+ comes "out the box" with embedded tools and a suite of preprogrammed smart lighting control algorithms to quickly group the luminaires, set the scene and optimally control LEDs to derive best performance. Coupled with its ability to connect with, and report to, other building systems make the LiGO+ a winner with installers and users alike.

## KEEPING BUILDING DATA SECURE

The Open Technology range of products and software solutions ensures your building data is held, accessed and transferred securely when required. All Open Technology devices and software solutions are password protected and the data transferred to and from them can be via secure FTP and SMTP connections.



CONTACT US FOR MORE INFORMATION

TEL: 01444 230 660

EMAIL: [INFO@OPENTECHNOLOGYUK.COM](mailto:INFO@OPENTECHNOLOGYUK.COM)

VISIT: [WWW.OPENTECHNOLOGYUK.COM](http://WWW.OPENTECHNOLOGYUK.COM)