

# X5 Lite Deluxe Modular Wheelchair



The **Aktiv X5, Lite** is a deluxe, modular (adjustable), lightweight aluminium wheelchair suitable for occasional to full-time use with a strong, crash tested frame including a five year warranty. Flip back, removable armrests with comfortable PU arm pads are supplied as standard. The backrest, legrests and rear wheels all have quick release mechanisms for easy transportation and storage.

The modular frame allows the seat height, seat depth and backrest angle all to be simply and easily adjusted. Height adjustable with a multi axle which allows for easy conversion between self-propel and transit wheels. The backrest and seat is covered with a generously padded nylon material for increased user comfort. Tension adjustable backrest straps, push button safety belt, stepper bar and anti-tippers are all supplied as standard. Footplates are height and angle adjustable as standard.



**Max User Weight:**  
140kg / 22st



# X5 Lite



Interchangeable Armrest options available



Available in 12" or 24" PU rear wheels

## FEATURES

- Folding aluminium frame
- Front and rear seat height adjustable
- Flip back, detachable armrest with PU armpad
- Plastic side panel clothes guard
- Padded, wipe clean, breathable, black nylon seat and back cover
- Tension adjustable backrest upholstery
- Angle adjustable backrest
- 7" grey PU front castors
- Available in 12" Transit or 24" Self-propel rear wheels with soft solid PU tyres
- Press button release safety belt

- Height adjustable anti-tippers

## Optional:

- Elevating legrests
- Stump support
- Amputee settings
- Interchangeable Armrests – Short Desk, Loop or Height Adjustable armrests



Easy transportable.



Back Angle Adjustable



Anti tipper



Flip Back Armrests



41 / 46 / 51cm



43cm - 51cm



41 - 51cm



44cm



21.5cm



41 - 51cm



90 - 105 degrees



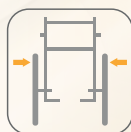
70 degrees



102cm



83 - 93cm



58.5 / 63.5 /



10.8kg



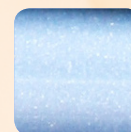
13.25kg



140kg



ISO 7176:19-2001 Passed



Frame Colour

WHEEL TYPE	SEAT SIZE	ORDER CODE
Self Propel	41cm (16")	X5SP4043
Self Propel	46cm (18")	X5SP4543
Self Propel	51cm (20")	X5SP5043
Transit	41cm (16")	X5T4043
Transit	46cm (18")	X5T4543
Transit	51cm (20")	X5T5043



Murrays Medical Equipment Ltd  
Airton Park, Airton Road  
Tallaght, Dublin 24

T: +44 (0) 1384 429700  
E: info@aktiv-wheelchairs.com