

Ashworth

SUPPLYING MECHANICAL SERVICES
AND PROCESS CONTRACTORS

dp Durapipe



DURAPIPE BUILDING SERVICES AND INDUSTRIAL SOLUTIONS



For your nearest branch, call freephone 0800 783 7680,
visit www.ashworth.eu.com or email a1plastics@ashworth.eu.com

Ashworth

SUPPLYING MECHANICAL SERVICES
AND PROCESS CONTRACTORS



www.ashworth.eu.com

Durapipe – BUILDING SERVICES

Durapipe UK has been at the forefront of thermoplastic pipework technology for over half a century.

The Durapipe ranges of pipes, fittings and valves for pressure and non-pressure systems are specifically designed to fulfill the requirements of modern buildings.

Page 4 – Chilled and Boosted Cold Water



Durapipe **superFLO**

Specialist system for chilled water/air conditioning and boosted cold water

Page 7 – Safe Chemical Drainage



Vulcathene Safe chemical drainage

Purpose designed for safe chemical storage

Page 5 – Hot and Cold Water



friatherm

Hot and cold pipework system

Quick and easy installations of hot and cold water

Page 8 – Sound Attenuated Drainage



friaphon

Sound attenuated drainage

Sound attenuated drainage system with no need for lagging

Page 9 – Impact Resistant Drainage



akatherm

Specialist HDPE drainage with high impact resistance

Page – 10 Emergency Fuel Supply



PLX

Durapipe PLX is a range of fusion-welded pipework for the safe transfer of fuels

Page 6 – Heating Pipework



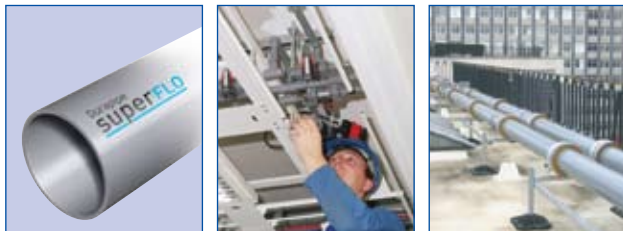
WEFA

PP-R pipework system for low temperature hot water

Durapipe

superFLO**CHILLED AND BOOSTED COLD WATER**

Durapipe superFLO offers tremendous advantages for chilled water/air conditioning or boosted cold water services in buildings.



When considering environmental control systems, or more specifically, the pipework requirements for chilled or boosted cold water applications, Durapipe superFLO provides the perfect solution.

Durapipe superFLO is lightweight and remains extremely tough and durable even at temperatures as low as -40°C.

The complete system, which incorporates pipes, fittings and valves, offers a 50-year design life as well as numerous benefits that alternative pipework materials cannot provide. These include reduced installation costs via a fast solvent-weld jointing procedure, low maintenance costs due to its limescale and corrosion resistance properties as well as being extremely lightweight making the product much easier to handle on-site.

Durapipe superFLO is available in sizes ranging from 16mm to 315mm.

KEY PRODUCT INFO

- Size Range – 16mm to 315mm
- Temperature Rating – -40°C to 70°C
- Pressure Rating – PN10

KEY PRODUCT FEATURES

- Lightweight
- Corrosion and limescale resistant
- Impact resistant
- Fast, simple jointing
- Ductile down to -40°C
- Reduced installation costs
- 50-year design life
- White solvent cement for visual indication

TYPICAL APPLICATIONS

All building types for:

- Chilled Water/Air Conditioning
- Boosted Cold Water

friatherm

Hot and cold pipework system

HOT AND COLD WATER

Friatherm is a purpose designed CPVC plastic pipework system that provides quicker and easier installations for hot & cold water applications and is a cost effective alternative to copper.



Speed of installation coupled with long-term performance benefits and no need for a power source or any 'hot works', means that Friatherm can offer significant cost savings over copper and other metal pipework systems. Furthermore, Friatherm offers a 50 year working life and due to the high grade of plastic material the system is completely limescale free and corrosion resistant.

KEY PRODUCT INFO

- Size Range – 16mm to 160mm
- Temperature Rating – 0° to 85°C
- Pressure Rating – PN25 up to 63mm, and PN16 75mm to 160mm

KEY PRODUCT FEATURES

- Lightweight
- Limescale and corrosion free
- Simple, one step jointing
- No power or hot works are required
- Fully WRAS approved
- Minimum 50 years' service life

TYPICAL APPLICATIONS

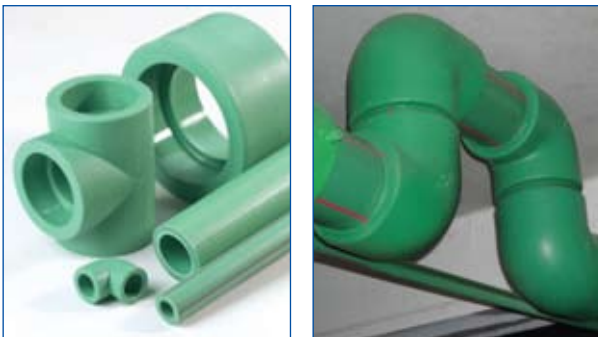
Hot and cold water systems in:

- Hospitals
- Schools
- Commercial buildings
- Hotels and Residential buildings
- Sports stadiums



HEATING PIPEWORK

A cost effective plastic water pipe system for low temperature hot water (LTHW) and hot & cold water services. Wefa is a complete range of pipe, fittings & valves with excellent corrosion resistance properties making it an ideal alternative to copper tube and steel.



Wefa is a PP-R based socket fusion pipework system that is quick and easy to install making it ideal for a range of plumbing and heating applications. Wefa is available in two different types of pipe:

- PP-R (Standard)
- Fibre Pipe

So next time you're looking to replace old leaky copper pipes, Wefa is the perfect water pipe solution.

KEY PRODUCT INFO

- Size Range – 16mm to 160mm
- Pressure Rating – PN10/PN20
- Temperature Rating – 0°C to 90°C

KEY PRODUCT FEATURES

- Two different types of pipe
- Easy to install
- Wide temperature range
- Alternative to steel or copper

TYPICAL APPLICATIONS

- Low temperature water (Heating)
- Hot & cold water



SAFE CHEMICAL DRAINAGE

Vulcathene is a purpose-designed chemical resistant plumbing system that has been specified and installed in the laboratories of schools, universities, hospitals and research facilities worldwide for over 50 years.



Tried, tested and proven, Vulcathene is the only chemical drainage system to have withstood the test of time in the most demanding of laboratory applications.

Two easy jointing methods, Mechanical for demountable joints and Enfuson (electrofusion) for welded joints, provide total versatility for designers and installers of chemical waste systems.

KEY PRODUCT INFO

- Size Range – 38mm to 152mm
- Temperature Rating -20°C to 100°C (only intermittent at 100°C)
- Anti-siphon traps
- Swept fittings

KEY PRODUCT FEATURES

- Purpose designed for chemical drainage
- Mechanical or Electrofusion jointing methods
- Fully BBA Approved

TYPICAL APPLICATIONS

Laboratories in:

- Schools
- Universities and Colleges
- Hospitals and Clinics
- Pharmaceutical companies
- Research organisations

friaphon

Sound attenuated drainage

SOUND ATTENUATED DRAINAGE

A purpose-designed sound reducing drainage system that offers outstanding sound insulation properties compared with traditional cast iron or lagged single wall plastic drainage systems.



Friaphon is constructed with dual layer technology and offers exceptional sound reduction properties from noises emitted by sanitary installations in buildings.

Lower material costs coupled with speed of installation and no need for lagging, means Friaphon offers significant cost savings over cast iron and single wall plastic drainage systems.

KEY PRODUCT INFORMATION

- Size Range – 110mm and 160mm
- Temperature Rating – 95°C (Short term)

KEY PRODUCT FEATURES

- Superb sound insulation
- Lower cost alternative to cast iron
- No lagging required
- Lower cost alternative to lagged plastic
- Push fit assembly
- High impact and temperature resistant

TYPICAL APPLICATIONS

Sound attenuated drainage systems in:

- Luxury apartments
- Hotels
- Libraries
- Hospitals
- Public buildings
- Restaurants



IMPACT RESISTANT DRAINAGE

Akatherm HDPE is a plastic drainage system that is manufactured to meet high standards of durability and reliability.



The combination of the excellent material properties of HDPE with homogenous welded joints, give the Akatherm drainage system high impact resistance properties and a wide temperature range.

Akatherm HDPE is ideal for soil and rainwater drainage in many different building types.

KEY PRODUCT INFO

- Size Range – 40mm to 315mm
- Electrofusion or butt weld

KEY PRODUCT FEATURES

- Impact resistant
- Lightweight
- Weather resistant
- Welded joints
- Suitable for pre-fabrication

TYPICAL APPLICATIONS

- Car parks
- Hotels
- Libraries
- Hospitals
- Public buildings
- Apartments



PIPEWORK FOR FUEL

Durapipe PLX is a complete range of dedicated fusion-welded pipework systems for the safe transfer of fuels. Suitable for use with leaded, unleaded petroleum, including ethanol rich alternative fuels (E85), diesel, bio-diesel and fuel oils.



Durapipe PLX is used in buildings such as hospitals, data centres, prisons and banks where there is a need for uninterrupted power supply (UPS) and/or emergency power.

The Durapipe PLX range represents a major innovation in pipework technology as it offers the ultimate in environmental protection with maximum protection against permeation and leak free joints.

Durapipe PLX is fully compliant with the Institute of Petroleum Performance Specification – Issue 2 for under ground pipework systems.

KEY PRODUCT INFORMATION

- 10 bar pressure rating
- Secondary containment system
- 30-year design life

- Size Range – 32mm to 315mm
- Electrofusion System

KEY PRODUCT FEATURES

- Suitable for pressure and vacuum applications
- Resists fuel permeation
- Corrosion resistant
- Protects the environment
- Easy to install

TYPICAL APPLICATIONS

- Uninterrupted Power Supply (UPS)
- Emergency Power Generation
- Oil fired equipment
- Commercial and public transport refuelling

BUILDING SERVICES SOLUTIONS

Please use the table below to establish which product is most suited to your application.

	BOOSTED COLD WATER	CHILLED WATER/AIR CONDITIONING	HOT AND COLD WATER	SOUND ATTENUATED DRAINAGE	CHEMICAL DRAINAGE	IMPACT RESISTANT DRAINAGE	HEATING PIPEWORK	EMERGENCY FUEL SUPPLY
WF WEFA			✓					✓
superFLO	✓	✓						
friatherm Hot and cold pipework system			✓					✓
Vulcathene Safe chemical drainage					✓			
friaphon Sound attenuated drainage				✓				
akatherm							✓	
PLX								✓

INDUSTRIAL RANGE

Durapipe UK pipework systems have been used in a variety of industrial applications for over 50 years. For the conveyance of different media from potable water to aggressive acids, Durapipe systems perform in the most demanding environments.



Durapipe ABS

Page 14 – Chilled and Cold Water

Complete system for chilled and cold water



Durapipe PVC-U

Page 15 – Industrial Fluid Handling

Complete system for industrial fluid handling applications



Durapipe Corzan

Page 16 – Hot Corrosive Fluids

Complete C-PVC system for industrial applications



Durapipe Polypropylene

Page 17 – Industrial Processing

Complete pipework system for aggressive materials



Durapipe Air-Line Xtra

Page 18 – Compressed Air Distribution

Compressed air distribution system



PLX

Page 19 – Safe Fuel Transfer

Pipework system for safe fuel transfer



Durapipe Duracool

Page 20 – Pre-Insulated Pipework

Pre-insulated pipework for chilled water



Durapipe FLS

Page 21 – Flow Control Solutions

Equipment for flow control solutions



Durapipe FIP

Page 22 – Manual and Actuated Valves

A complete range of manual and actuated valves

Durapipe

Please use this table to establish which product is most suitable to your application

Material	Chemical resistance and performance data	Typical applications	Unsuitable for following uses	Size and joining information
Durapipe ABS (Acrylonitrile Butadiene Styrene)	Moderately strong mineral acids Caustic and ammoniacal solutions Most inorganic salt solutions Some detergents Temperature range -40°C to +70°C	Chilled water, low temperature brine, potable water, air conditioning, process water, foodstuffs	Pressure applications over 70°C strong bleaches aromatic solvents	Pipe and fittings for solvent cement joining manufactured in metric sizes from 16mm to 315mm to DIN & ISO standards and in inch sizes from 3/8" to 12" British Standard. Threaded fittings also available
Durapipe Corzan (PVC-C)	Very strong mineral acids Caustic solutions Most inorganic salt solutions Some detergents Temperature range +5°C to +100°C	High temperature, aggressive substances, highly corrosive conditions, chemical processing and many industrial applications	Aromatic solvents Temperatures below +5°C	Pipe and fittings for solvent cement joining manufactured in sizes from 16mm to 160mm
Durapipe Polypropylene (PP)	Strong mineral acids Caustic and ammoniacal solutions Inorganic salt solutions Many organics Detergents Temperature range 0°C to +100°C	Hot chemical applications	Strong oxidising acids and halogens	Pipe and socket-weld fittings manufactured in inch and metric sizes
Durapipe PVC-U (Unplasticised Polyvinyl Chloride)	Strong mineral acids Caustic and ammoniacal solutions Some organics Most detergents Temperature range +5°C to 60°C	Potable water, general purpose water, waste water etc.	Aromatic solvents temperatures below +5°C temperatures over 60°C	Pipe and fittings for solvent welding manufactured in metric sizes 12mm to 315mm to DIN and ISO standards and 3/8" to 12" British Standards. Threaded fittings also available



CHILLED AND COLD WATER

Durapipe ABS for low temperature fluid transportation.

Durapipe ABS combines corrosion resistance, toughness and economic benefits to provide tremendous advantages for low temperature fluid transportation.



ABS is a solvent welded, fully matched pipework system incorporating pipe, fittings and valves that is available in both imperial and metric sizes.

ABS provides a wide temperature range and the system remains extremely ductile even at temperatures as low as -40°C.

Furthermore, ABS is extremely lightweight and is much easier to handle on-site than traditional materials especially during installation which can significantly reduce both time and cost, as well as being fully WRAS approved.

KEY PRODUCT INFORMATION

- Size Range – 16mm to 315mm
- Pressure Rating – (Metric) PN10 - 16 to 250mm, PN8 - 315mm
- Temperature Rating -40°C to 70°C
- Pressure Rating – (Imperial) Up to 4" Class E, Up to 8" Class C, 10" & 12" Class B

KEY PRODUCT FEATURES

- Lightweight
- Easy to install
- Wide temperature range
- Tough and durable
- Corrosion resistant

TYPICAL APPLICATIONS

- Chilled water
- Boosted cold water
- Potable water
- Low temperature cooling
- De-mineralised water
- Vacuum systems
- Waste water



INDUSTRIAL FLUID HANDLING

Durapipe PVC-U – for process chemicals and industrial fluid handling.

Our PVC-U pipe and fittings provide excellent chemical resistance making it ideal for various industrial applications.



PVC-U allows the safe transportation of many acids, alkalis and chemical concentrates without fear of corrosion and environmental pollution.

Durapipe PVC-U is a solvent welded, fully matched pipework system incorporating pipe, fittings and valves that is available in both imperial and metric sizes.

PVC-U is lightweight and is extremely easy to install which can save both time and money on any given project when compared to other, more traditional pipework materials.

Furthermore, Durapipe PVC-U is fully WRAS approved and it also meets the requirements of other internationally recognised standards and approvals.

KEY PRODUCT INFORMATION

- Size Range - 12mm to 315mm (Metric) 3/8" to 12" (Imperial)
- Pressure Rating – (Metric) Pipe – 20mm to 160mm PN16 Fittings – 12mm to 225mm PN16, 250mm to 315mm PN10
- Temperature Rating: 5° to 60°C
- Pressure Rating – (Imperial) 1/2" to 6" pipe Class E, 3/8" to 12" fittings Class E

KEY PRODUCT FEATURES

- Lightweight
- Easy to install
- Corrosion resistant

TYPICAL APPLICATIONS

- Acids & Alkalis
- Effluents
- Potable water
- Chemical processing
- Effluent Treatment

 Durapipe Corzan

HOT CORROSIVE FLUIDS

Durapipe Corzan is a C-PVC plastic pipework system for handling hot, corrosive fluids.



Corzan offers excellent performance levels in highly aggressive industrial conditions.

The fully-matched plastic pipe system has the ability to convey hot acids and alkalis under pressure at elevated temperatures.

The smooth surface of Corzan is corrosion resistant which makes it superior to metal pipework alternatives which can become prone to corrosion resulting in process leaks, flow restrictions and ultimately premature system failure.

For a reliable, chemically resistant C-PVC piping system, Durapipe Corzan is the ideal choice.

KEY PRODUCT INFORMATION

- Size Range – 16mm to 160mm
- Temperature Rating – 5° to 95°C
- Pressure Rating – PN16 (16mm to 110mm), PN10 (160mm)

KEY PRODUCT FEATURES

- Excellent chemical resistance
- Lightweight
- Wide temperature range
- Easy to install
- High temperature acids & alkalis

TYPICAL APPLICATIONS

- Acids & alkalis
- Demineralised water
- Industrial waste treatment
- Chemical processing
- Soaps, paper & pulps
- Effluents

 Durapipe Polypropylene

INDUSTRIAL PROCESSING

Durapipe Polypropylene is specially designed to convey the most hazardous of chemicals at elevated temperatures.



Polypropylene pipe has excellent chemical and abrasion resistance properties making it ideal for a range of industrial pipe supply purposes. Its characteristics are perfectly suited to process applications including pharmaceutical and chemical processing.

Durapipe Polypropylene is either socket fusion, or butt fusion jointed fully matched pipework system incorporating pipe, fittings and valves that are available in metric sizes.

KEY PRODUCT INFORMATION

- Size Range – 20mm to 110mm (Socket) 20mm to 40mm (Butt)
- Pressure Rating – PN10 (Metric)
- Temperature Rating – 0° to 100°C

KEY PRODUCT FEATURES

- Lightweight
- Excellent chemical resistance
- Multiple jointing options

TYPICAL APPLICATIONS

- Acids & alkalis
- Chemical processing
- Industrial waste treatment
- Pharmaceuticals
- Effluents



COMPRESSED AIR DISTRIBUTION

Durapipe Air-Line Xtra is the ideal solution for ensuring that air is kept clean and uncontaminated for use in process and manufacturing industries.



A lightweight, non-corrodible compressed air distribution system, Durapipe Air-Line Xtra is manufactured from a specially formulated blend of ABS and is suitable for continuous operation at 12.5 bar at 20°C.

Boasting a 30-year design life, Durapipe Air-Line Xtra is specifically designed for the conveyance of compressed air, Air-Line Xtra also meets the requirements of the UK Pressure Systems and Transportable Container Regulations.

KEY PRODUCT INFORMATION

- Size Range – 16mm to 110mm
- Pressure Rating – PN12.5

KEY PRODUCT FEATURES

- Lightweight
- Easy to install
- Ultra smooth internal bore
- Corrosion resistant

TYPICAL APPLICATIONS

- Compressed air systems
- Pneumatic machinery



SAFE FUEL TRANSFER

Durapipe PLX is a complete range of dedicated fusion-welded pipework systems for the safe transfer of fuels. Suitable for use with leaded, unleaded petroleum, including ethanol rich alternative fuels (E85), diesel, bio-diesel and fuel oils.



PLX is the ideal solution for transportation markets such as rail, aviation, haulage and marine.

The Durapipe PLX range represents a major innovation in pipework technology as it offers the ultimate in environmental protection with maximum protection against permeation and leak free joints.

Durapipe PLX is fully compliant with the Institute of Petroleum Performance Specification – Issue 2 for under ground pipework systems.

KEY PRODUCT INFORMATION

- 10 bar pressure rating
- Secondary containment system
- 30-year design life
- Size Range – 32mm to 315mm
- Electrofusion System

KEY PRODUCT FEATURES

- Suitable for pressure and vacuum applications
- Resists fuel permeation
- Corrosion resistant
- Protects the environment
- Easy to install

TYPICAL APPLICATIONS

- Uninterrupted Power Supply (UPS)
- Emergency Power Generation
- Oil fired equipment
- Commercial and public transport refuelling

 Durapipe Duracool

PRE-INSULATED PIPEWORK

Our innovative Duracool pre-insulated ABS pipework system is specially designed to provide reduced installation costs.



Duracool is a complete system of pre-insulated pipe with unique shells for the fittings, insulation is provided by an attractive polyethylene outer casing.

Fitting is quick and easy, eliminating the need for hot works or manual lagging making installation an easy and convenient process.

KEY PRODUCT INFORMATION

- Size Range – 20mm to 225mm
- Pressure Rating – PN10
- Temperature rating – 40°C to 70°C

KEY PRODUCT FEATURES

- Lightweight
- Easy to install
- Cost efficient installation
- Wide temperature range
- Tough and durable

TYPICAL APPLICATIONS

- Chilled water
- Glycol systems
- Brine

 Durapipe FLS

FLOW CONTROL SOLUTIONS

Durapipe FLS sensors, monitors and transmitters.

As well as a complete range of fittings, Durapipe FLS products are characterized by quality, through from product development to accurate manufacturing and testing processes.

FlowX3 instruments are developed and produced with the latest technology ensuring high, reliable and long-term performances.



All of the Durapipe FLS products are based around either measuring the velocity of a liquid in a system by Insertion Technology or by using a visual Variable Area Flowmeter.

Installation of the insertion technology typically requires only a small hole in the pipe; the sensor is then fixed perpendicular to the hole and measures the velocity at a certain place in the pipe. Sensors' dimensions are not pipe size specific and are independent from pipe cross section. The calculation to work out average velocity and flow volume is done in the instrument.

To help provide an ever-widening range of solutions for fluid analysis and measurement, Durapipe FLS has recently introduced ChemX3: a new line of sensors, electrodes, instruments and accessories for electrochemical measurement.

VISUAL FLOWMETERS

- Variable Area Flowmeters

FLOWX3 – FLOW MONITORING EQUIPMENT

- Paddle wheel technology
- Insertion Magmeter
- Flow monitors and transmitters

CHEMX3 – CHEMICAL MONITORING EQUIPMENT

- CHEM X3 – Chemical Monitoring



MANUAL AND ACTUATED VALVES

For use in all industrial and building services solutions.

Durapipe FIP – A complete range of manual & actuated valves.

Durapipe offer a complete range of manual and actuated valves including ball valves, led by the innovative VDK range of 2 and 3 way ball valves, as well as butterfly valves, diaphragm valves, ball check valves and other flow control solutions.



The Durapipe FIP range of valves are widely used in a variety of industrial applications around the world, from water treatment to shipbuilding. Plus many more in-between.

From a specialised in-house valve department, a wide range of valves are available to complement the pipe and fittings ranges in order to offer fully matched systems.

The various valve types are available in all materials with a choice of valve seals and end connections. These choices would normally depend on the type of fluid being transferred through the system.

A dedicated actuation team is available to offer technical advice and assemble complex actuated valve packages. Valves can be supplied with electrically or pneumatically actuation devices.

KEY PRODUCT INFORMATION

- Ball Valves
- Butterfly Valves
- Diaphragm Valves
- Air Release Valves
- Sediment Strainers
- Pressure Relief Valves
- Wafer Check Valves

KEY PRODUCT FEATURES

- Lightweight
- Easy to install
- Robust
- Complete system matching
- Complete actuation traceability

TYPES OF ACTUATION

– ELECTRIC ACTUATORS

- Multi voltage
- IP65 rated
- Emergency manual override
- Adjustable limit switches
- Failsafe option
- Atex approved option

– PNEUMATIC ACTUATION

- Single acting – failsafe closed/open
- Double acting
- Limit switches
- Positioners and position indicators

– MANUAL LIMIT SWITCHES

– SOLENOID VALVES

TYPICAL APPLICATIONS

- For use with all Durapipe systems
- PVC-U – Excellent resistance to chemicals and non toxic – ideal for most general purpose applications
- ABS – Wide temperature range, ideal for chilled, condensate and cold water systems
- Corzan (PVC-C) – High temperature performance and excellent chemical resistance – Ideal for conveying hot chemicals or heavily chlorinated materials
- Polypropylene – Tough and durable, resists many concentrated acids, alkalis and organic solvents – ideal for many industrial applications, particularly in the chemical industries.