

# KODUCT Co., Ltd.

## Head Office & Factory

58, Nakdongnam-ro 991 beon-gil, Gangseo-gu, Busan, 46717 Rep. of Korea  
 TEL : +82-51-517-4490 FAX : +82-51-517-4492  
 E-mail : koduct@koduct.com, koductoverseas@koduct.com  
 www.koduct.com  
 www.koduct.com/m



## Overseas Branch Office

CHINA KODUCT MACHINERY (SHANGHAI) CO., LTD.  
 Tel : 86-21-5768-7680  
 biz@koduct.com.cn

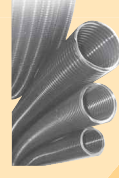
U.S.A  
 KODUCT SYSTEMS INC.  
 Tel : 1-334-300-0072  
 koductusa@koduct.com

# KODUCT

We create customer impression beyond customer satisfaction

## Overseas Agencies

JAPAN	ALL IN CO.,LTD. Tel : 81-30-2094-0267 allin.comuro@gmail.com	INDIA	SD LOGITRADE INDIA PVT.LTD Tel : 91-88-1079-7775, 91-88-0037-8835 mohitverma@sdlogistics.com / avneet.kumar@sdlogics.com
INDONESIA	PT. KIMS TRADING Tel : 62-21-4514101 kimstrading2002@gmail.com	AUSTRALIA	AMPLEX INDUSTRIES Tel : 612-4260-7800 steve.nuthall@amplex.com.au / steve.nuthall@examail.com.au
IRAN	SHAIRAD SANAT Tel : 98-21-8850-51-99 info@shairad-sanat.net	TURKEY	HIDROSAM HIDROPAR Tel : 90-224-441-8877 info@hidrosam.com / sales@hidrosam.com
THAILAND	AUTOMATION CONTROL SYSTEM GROUP CO.,LTD Tel : 66-2-185-6381-9 pastlacs@ksc.th.com	SINGAPORE & MALAYSIA	PRESTECH Tel : 65-6743-3880 / 65-9876-6342 alvinboong@prestech.com.sg
POLAND	DACPOL CO.,LTD Tel : 48-22-70-35-174 p.banaszek@dacpol.com.pl	UNITED KINGDOM & IRELAND	A. S. JOYSTICKS,LTD Tel : 44-1788-382742 sales@asjoysticks.co.uk



www.koduct.com



# Challenge toward the world! Challenge toward the future!



◀ U.S.A. Plant  
6070 PERIMETER Park Way, Montgomery  
AL 36116 U.S.A

CHINA Plant ▶  
SHANGHAI



## History of Company

1986 Established under the company name of Woonjin International Co.  
1992 Successful development of cable carriers in the country.  
1997 Converted into KODUCT CO.,LTD.  
2002 TAIWAN overseas office set up.  
2005 CE certificate obtained.(Cable Carrier)  
2005 Management system "ISO9001" registered.  
2006 Established a R&D center.  
2007 Automotive quality system ISO/TS16949 registered.  
2007 UL Mark obtained for Flexible Tube.  
2008 Established the branch corporation in AL,USA  
IPA certificate obtained.(low dust and noise class 1)  
Expanded Official Commendation form "venture Business"  
Official Commendation form "Invention, Konzeption"  
Official Commendation form "Export of million dollar"  
2009 Acquired a franchise of Dresspack, ASIA-PACIFIC.(LEONI CO./GERMANY)  
2010 Developed the real-time monitoring system for spot welding condition.  
2012 Official Commendation form "Patent Technology".  
2013 Taking ROHS test for Connector.(non detection of harmful substance)  
2014 Win the grand prize for Patent Innovation Business Association.

1986 Woonjin International設立。  
1992 ケーブルキャリア国内開発成功。  
1997 社名変更(Woonjin International→KODUCT CO.,LTD.)  
2002 台湾事務所設立。  
2005 CE認証取得。(ケーブルキャリア)  
2005 上海法人事務所設立。  
2006 ISO9001認証取得。  
2006 R&Dセンター設立。  
2007 国際自動車部品規格証ISO/TS16949取得。  
UL MARK取得。(フレキシブルチューブ)  
2007 米国(アラバマ州)法人事務所設立。  
2008 ケーブルキャリアK9タイプ(IPAテストクラス1)。  
"ベンチャー企業賞"受賞。  
"発明特許"大賞"受賞。  
"100万ドル輸出"受賞。  
2009 Dresspack(LEONI)社/ドイツのアジア販売権獲得。  
2010 リアルタイムスポット溶接のモニタリングの製品を開発。  
2012 "優秀特許技術賞"受賞。  
2013 コンネクタのROHSテスト。(有害物質不検出)  
2014 "特許特許革新企業協会"最優秀賞"受賞。

# A Company, Creating Values Global Partner, Win-Win Partnership

KODUCT CO., LTD. is a leading company of the cable carrier industry in S.Korea.  
We preserve our effort to manufacture better products, provide various sizes and design through constant R&D and investment.  
Our goal is customers' satisfaction with a correct forecast of needs and we want to offer sincere services.  
KODUCT CO., LTD. makes sure your maximized profit from our accumulated experiences.

(株)KODUCTは韓国ケーブルキャリア市場におきまして、お客様のあらゆるニーズにお応えするため、日々地味な努力を続けてまいりました。  
高度に進歩を続ける世界の産業界に対し、研究開発と設備投資により、多様なサイズとバリエーションの製品を用意し皆様のご要望にお応えいたします。  
弊社の目標はお客様のニーズを正確に把握し、真心を尽くした最良のサービスを提供することで、顧客満足を実現することにあります。KODUCTはこれまで精励を重ねてきた経験を継承することで、お客様に最小限のコストで最大の性能と利益をもたらす、世界のトップブランドへ躍進することを、目指してゆく所存です。



## MISSION

-Development of PERFECT QUALITY PIROT product  
-Development of proper APPLICATIONS : MOLD / MATERIAL / PROCESS  
-Design Competent : CABLE CARRIER / FLEXIBLE TUBE / CONNECTER

- ・デザインの高競争力の強化
- ・新素材の適用、金型技術、生産プロセス技術の開発による生産システムの最適化
- ・欠点のない品質の製品開発：ケーブルキャリア、ホース、ブラケット類

## VISION

-R&D Center  
-Accumulation of CORE TECHNOLOGIES for NEW PRODUCTS / PROCESSES  
-INNOVATIONS In Electronics, Automotive, Robotize  
・ R&D Center  
・ 核心要素技術の蓄積で競争力の強化  
・ 新製品及び製品の生産プロセス技術の開発

## PLANNING

-Reorganization ▶ R&D, Product Team Reinforce  
-IMPROVEMENT ACTIVITY(Cost Reduction) ▶ Enhanced Core Technology in Product Process  
-Review APPLICATIONS for New Paradigm Business Models  
・ 組織改革、技術の研究開発、生産技術開発の核心人材の補強  
・ 生産コスト削減のための改善活動が経営の重点提示 → 生産及び先行技術の重要な要素技術の強化  
・ 持続的な企業成長と価値付与のための新成長動向の開発

# CABLE CARRIER

We create customer impression beyond customer satisfaction

## What's the Cable carrier

### ケーブルキャリアーとは

Cable carrier attached in moving equipment is used to protect cables and hoses. It prevents cables and hoses from being tangled, disconnected caused by rapid movements.  
Cable carrier is made of plastic or metal in accordance of environment and applications. Additionally, the material of engineering plastic is widely used for normal cases.

ケーブルキャリアーは各種機械、装置の移動部に装着されるケーブル、ホースの絡みやねじれを防止し、断線を防ぐ目的で使用されます。  
ケーブルキャリアーは使用環境、使用用途に応じ、金属製またはエンジニアリングプラスチック製を選択します。

## Details to select proper Cable carrier

### ケーブルキャリアーの選定に必要な条件

- Travel of machinery: To calculate lengths
- Outer diameters and Quantity of cables and hoses
- To select an inner width of the Cable carrier
- Outer diameters of the thickest cables of hoses
- To select a radius of the Cable carrier
- Total weight of cables and hoses
- To select a span of the Cable carrier
- The working period of machines
- Ambient temperature
- 移動ストローク及び速度、加速度
- ケーブル、ホースの許容曲半径(稼働時)
- 走行頻度(1日または1時間当たり)
- ケーブル、ホースの外径及び数量
- ケーブル、ホースの重量
- 使用環境

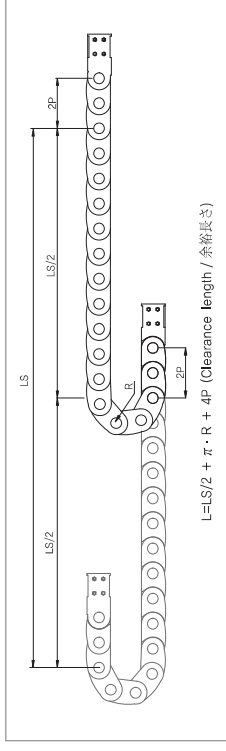
## How to decide radius of Cable carrier

### 曲げ半径の選定

- In case of not knowing cable radius, you can select following details.
- Electronic Cables :  $R_{min} > 6-8 \times \phi$  (outer diameter of the thickest cable)
- Pneumatic Lines :  $R_{min} > 8-10 \times \phi$  (outer diameter of the thickest cable)
- Hydraulic hoses :  $R_{min} > 12-15 \times \phi$  (outer diameter of the thickest cable)
- To select a span of the Cable carrier
- The working period of machines
- Ambient temperature
- ケーブル : 最大外径  $\times 6 \sim 8$ 倍
- エアホース : 最大外径  $\times 8 \sim 10$ 倍
- 油圧ホース : 最大外径  $\times 12 \sim 15$ 倍

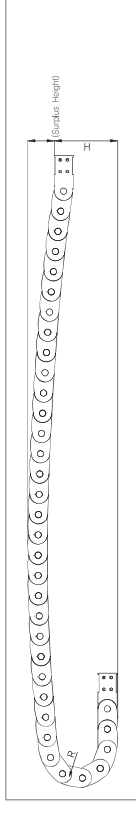
## Calculation of the length

### ケーブルキャリアーの長さ計算



## How to decide clearance height of Cable carrier

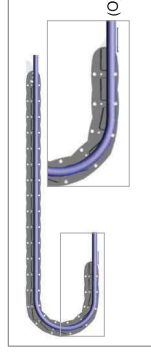
### 高さ方向のクリアランス



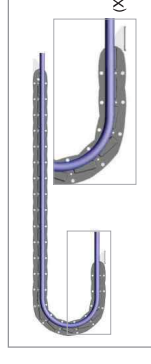
The clearance height enables safe operation and a long-term performance. Additionally, for particular machinery, the products can be supplied without clearance heights. (No surplus height for site type such as CDPS, SRS, WS type)  
ケーブルキャリアーはケーブル、ホースを支持し、長期間安全に動作させるためクリアランスを設定し製造されています。設計に際し、ケーブルキャリアーが走行する空間では、取付け高さに加え、クリアランスを考慮した高さ余裕をとる必要がります。

## How to install Cables and hoses

### ケーブル・ホースの装着



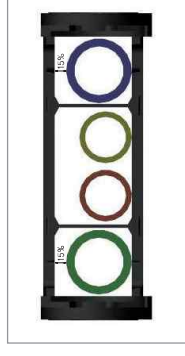
Surplus 15% of the cable length is required to prevent it from being disconnected during its operation.  
ケーブルキャリアーのケーブル、ホースの装着に際しては適切な余裕を確保してください。余裕が適切でない場合はケーブルの原料やコーキング剤の性状の原因となります。



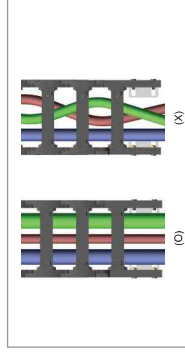
Cables and hoses are aligned and fixed in front of the Moving and Fixed End Bracket.  
ケーブルは移動端と固定端でしっかりとクランプしてください。(組立:ホースは移動端のみクランプ)

## How to align Cables and hoses

### ケーブル・ホースの配置



Classify cables and hoses in proportion. For smooth and repeat movement of cables and hoses in Cable carrier, they should be placed spaciouly.  
重量バランスが左右等となるようケーブル・ホースを装着してください。  
隣り合うケーブル間の空間はケーブル外径の10%、高さ方向はケーブル 外径の15%程度を確保してください。



Cables and hoses should be brought into a line to prevent them from being tangled.  
隣り合うケーブルの外径がケーブルキャリアーの高さの1/2以下またはケーブル同士が寄り過ぎる可能性がある場合、セパレーターを装着し、分離してください。  
ケーブル・ホースは絡み合わないよう配置してください。



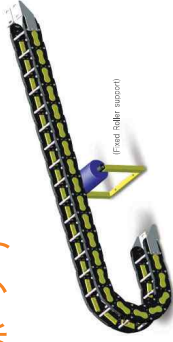
NEW

CABLE CARRIER

Hybride Cable Carrier

To prevent Cable carrier from being sagged(Roller Support)

ケーブルキャリアの垂れ防止(ローラーサポーター)



When extended lengths are needed even if there are already free span length per each type, the Fixed Roller Support should be installed as the left picture to prevent them from being sagged.

フリースパンを超え、ストローク延長が必要な場合、支持ローラーまたは中間サポーターを設置することで、最大、フリースパンの4倍までストローク延長することが可能です。

How to install Cable carrier for long travel(Guide Channel)

ロングストロークでの使用(ガイドチャンネル)

installing proper Guide channel is also important as finding correct Cable carrier.

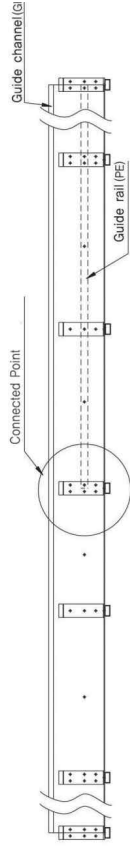
It does not cause defects to supply Cable carrier with Guide channel.

When customers manufacture Guide channel directly, it can be some problems without comments from our Engineer.

We provide our drawing of Cable carrier with Guide channel in case.

ケーブルキャリアはフリースパンを大きく超えるロングストロークでの使用が可能です。(プラスチック製ロングストローク仕様の場合)この場合、並行スタイルがグライド状態となるため、専用のガイドチャンネルと特別な許容計算が必要です。

ご使用条件を担当者にご連絡ください。



Cable carrier Order Form

Type	Width	Radius	Length	ES-Setting TYPE (G/L/Down)	Qty/Set
KP16	10 (0.393)	18 (0.708)	1.0/4L(65Link) (39.921)	MU/FD, MU/FU, MD/FD, MD/FU	10Sets

\*ex) KP16-M010-M018-1014L-MU/FD

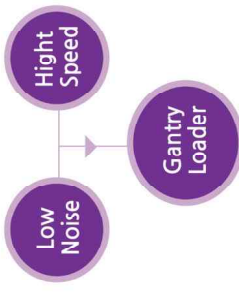
(inch)

End bracket Setting Example

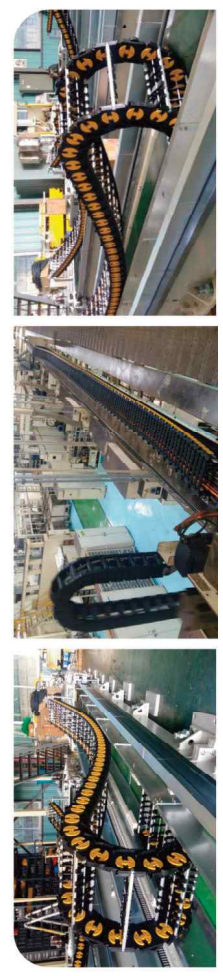


- ▶ Reduce the noise of the skate
- ▶ Improvement of Pitch and Inner Height size
- ▶ Reduce friction with the floor
- ▶ Reduce friction with the guide channel
- ▶ スケートの騒音減少
- ▶ ピッチと内高の寸法を改善
- ▶ 底との摩擦衝撃減少
- ▶ チャンネルとの摩擦衝撃減少

KH Type



KHA Type

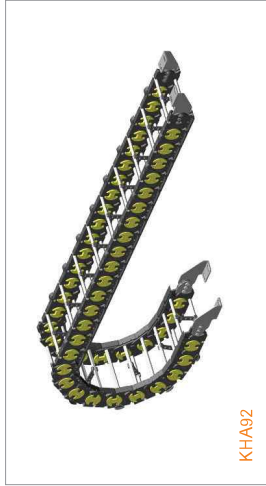




## Hybride Cable Carrier ハイブリッドケーブルキャリア



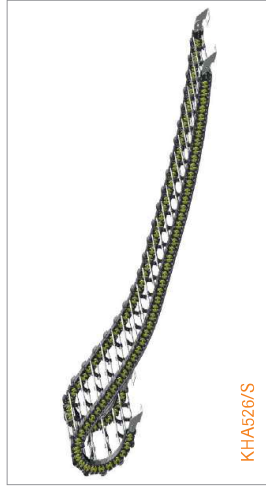
KHA91



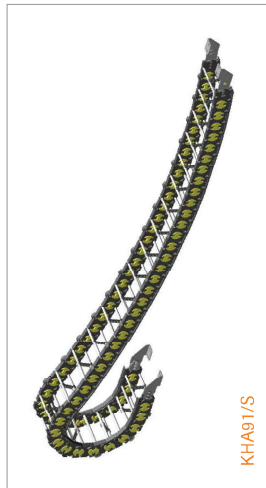
KHA92



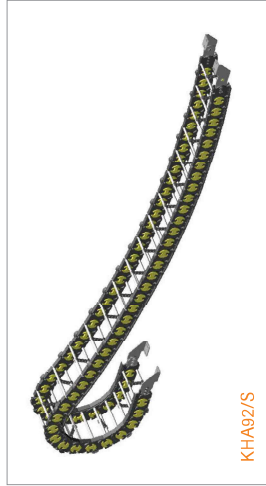
KH526/S



KHA526/S



KHA91/S



KHA92/S

### ○ Features

- Noise by impact is minimized (Zdb) with the application of noise buffer system (NP CAP) and strengthened durability.
- Cable's lifespan will be extended with smooth radius by reducing gab between inner height and pitch size.
- All-in-One type of Skate and Body with excellent durability and no breakaway of the Skate.
- The friction noise is minimized by reducing gab between the Skates.
- It is easy to check changing time of Skate when see the skate abrasion so It has excellent maintainability.

### ○ Applications

- Machine tools, Cutting machines, Welding equipments, Automation machines, Automotives lines, Automatic lines and crane and etc

- 騒音防止NP CAPを装着、リンクとリンクの衝撃を吸収して騒音減少(Zdb)と耐久性UPを実現
- 内高サイズとピッチサイズを改善して円滑な曲げ半になるように開発、ケーブルの寿命を延長
- スケートとリンクが一体タイプになっていてスケート離脱がなくなる
- スケート間の段差を減らして摩擦騒音を最小化
- スケートに寿命切れを入れて、磨耗と交換時間を目で確認

- 工作機械、自動溶接装置、自動溶接装置、オートローダー、クレーン、自動車生産ラインなど。

## Plastic Cover Type プラスチックカバータイプ



KP16



KP20



KP32



KP40



KP454



KSC588



KDP070



KSC715



KP90



KDP100



KP50



KP357



CDP080



CDP091



CDP100

### ○ Features

- It can be opened with a "+" screwdriver.
- Less noise during high-speed driving.
- Open and shut type for convenient installation, maintenance.
- Made of engineering plastic for the light weight and smooth movements.

- エンジニアリングプラスチック製で軽量、動きもスムーズ。
- 蓋が閉鎖式でケーブル、ホースの磨耗が容易。
- 開閉式で、リンク接続はドライバーで簡単にOK。
- 高速走行時、低騒音。

### ○ Applications

- Machine tools, Automation machines, Woodworking equipments, Medical equipments

- 工作機械、自動機、木工機械、医療器械、食品機械、その他一般産業機械。

## Aluminum Bar Type アルミバータイプ



CDS070



CDS080



K90



CDS100



CDS150

### ○ Features

- Made of engineering plastic for the light weight and smooth movements.
- Covers consisted of aluminum bars provide better solidity.
- Open and shut type for convenient installation, maintenance.

- エンジニアリングプラスチック製で軽量。
- アルミ製クロスバー採用で剛太。
- 三点支持連結でリンク間の幅合がに優れる。
- 開閉式は自由に設計可能。

### ○ Applications

- Machine tools, Cutting machines, Welding equipments, Automation machines and etc.

- 工作機械、自動溶接装置、自動機など。



## Enclosed Type 全閉タイプ



KM50



CDM050



KM715



CDM080



KM90



CDM091



CDM100



KDM100

### ○ Features

- Made of engineering plastic for the light weight and smooth movements.
- Sealed type protects cables and hoses from any dust.
- Open and shut type for convenient installation, maintenance.

### ○ Applications

- Machine tools, Cutting machines, Welding equipments, Automation machines and etc.

### ○ Features

- Proper for more than twice length of the free span.
- Made of engineering plastic for the light weight.
- Operate covers provide convenient installation and maintenance.
- Skates enable longer operation life and worn skates can be replaced conveniently.
- Exactly measured guide channels should be installed for a long term performance and excellent movements

### ○ Applications

- Machine tools, Moving equipments, Industrial robots and Applications for long travel

- ロングストロークに最適。
- エンジニアリングプラスチック製で軽量。
- 蓋が開閉式でケーブル・ホースの設置が容易。
- グライディングスケートの採用で長寿命、スケート交換可能。
- 専用ガイドチャネルの使用で更に長寿命が可能。

- 工作機械、オートローダー、各種産業ロボットなど。

## Clean Room Type クリーンルームタイプ

IPA



KD20A



KD20B



KD30A



KD30B



KD40



KA33

### ○ Features

- It is used for clean room and no friction among Cable Carriers designed by Low dust and less noise Cable Carriers and it is appropriate environmentally friendly products.
- IPA certificate obtained and SEVEN made of Engineering Plastic (Hazardous substances are not detected based on RoHS). The Radius can be replaced simply with only Radius Pin for customer's convenience and the Link connection type can control the length of Cable Carrier.
- Easy to install and assemble with a-crew driver and can fix with machines on three parts(Up, down, front).

### ○ Applications

- Machine tools, Cutting machines, Welding equipments, Automation machines and etc.

### ○ Features

- Proper for more than twice length of the free span.
- Skates provide better operation with lower power and less noise.
- Skates are exchangeable and give longer operation life.
- Skates enable longer operation life and worn skates can be replaced conveniently.
- Sustainable for focus of cables and hoses.
- Exactly measured guide channels should be installed for a long term performance and excellent movements
- Various inner widths can be applied for your use.

### ○ Applications

- Automatic welding machines, Automotives lines, Automatic lines and crane

- ロングストロークに最適。
- 高剛性により高荷重、ロングストロークに対応。
- フライディングスケートの採用で長寿命、スケート交換可能。
- 低騒音、低振動、省力法は自由に設計可能。
- 専用ガイドチャネルの使用で更に長寿命が可能。

- 自動溶接装置、オートローダー、クレーン、自動車生産ラインなど。

## Long Distance Plastic Cover Type 長距離プラスチックカバータイプ



CDPS050



KSC588/S



KDPS070



KSC715/S



CDPS080



CDPS100



CDPR100



CDMS100

## Long Distance Aluminum Bar Type 長距離アルミバータイプ



SRS070



SRS080



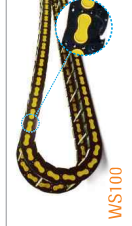
SRS100



SRS150



WS080



WS100



WS150

### ○ Features

- Proper for more than twice length of the free span.
- Skates provide better operation with lower power and less noise.
- Skates are exchangeable and give longer operation life.
- Skates enable longer operation life and worn skates can be replaced conveniently.
- Sustainable for focus of cables and hoses.
- Exactly measured guide channels should be installed for a long term performance and excellent movements
- Various inner widths can be applied for your use.

### ○ Applications

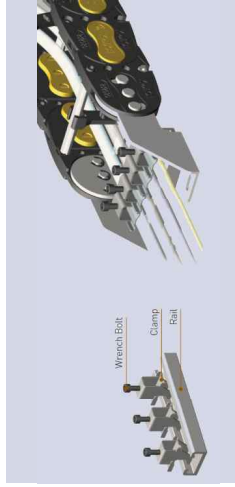
- Automatic welding machines, Automotives lines, Automatic lines and crane

- ロングストロークに最適。
- 高剛性により高荷重、ロングストロークに対応。
- フライディングスケートの採用で長寿命、スケート交換可能。
- 低騒音、低振動、省力法は自由に設計可能。
- 専用ガイドチャネルの使用で更に長寿命が可能。

- 自動溶接装置、オートローダー、クレーン、自動車生産ラインなど。

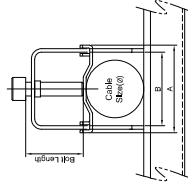
# Cable Binder ケーブルバインダー

## KCB / Clamp Type

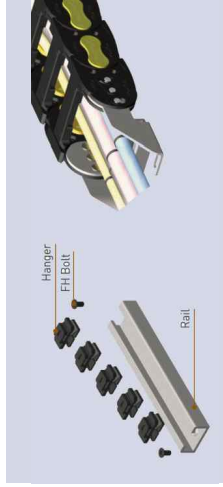


Clamp Type Bolt & Cable Size

Clamp Type	Wrench Bolt L	Cable (φ)	A (mm)	B (mm)
KC1/A	M8X15L	13-17	24	17
KC1/B	M8X20L	10-12	24	17
KC2/A	M8X15L	22-24	30.4	24
KC2/B	M8X20L	18-21	30.4	24
KC3/B	M8X20L	29-32	38	32
KC3/C	M8X25L	25-28	38	32



## KCB / Hanger Type(A, B)



# Steel "S" Aluminum Bar Type スチールアルミバータイプ("S"タイプ)



### ○ Features

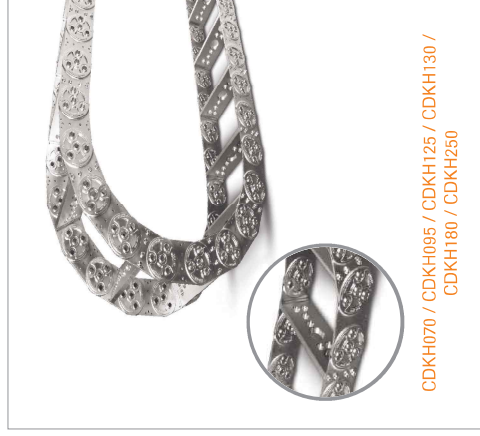
- It is made of very durable Aluminum Bars which are heat with heat treated bolts.
- The light weight and user friendly installation
- Removing unnecessary parts of Link Hole fixers is weight up to 20%(CDK125/130/180)
- For superior strength and moisture environment to get rust easily, it can be made of stainless steel
- Improving sustainability and having plate curved by 1mm prevent it from being crooked, sagged due to the weight of cables and hoses(CDK125/130/180)
- 耐久性に優れるアルミ製/ステンレス製/樹脂製。
- ケーブル、ホースの自重がきわめて軽いため、ケーブルの曲がりを防止し、ステンレス製も得意です。
- 錆が懸念される環境下でも使用される場合、ステンレス製のケーブルを使用。
- リンクホルダーの削減で20%軽量化を実現。
- ケーブルにエッジ加工を施すことで強度を大幅にUP。
- 連結部品の一部を丸くすることで材料強度が向上、ペイント作業の効率化をUP。

### ○ Applications

- Crane, Heavy Industry Iron and steel mill facility, plant facility, Coil stripping and Rolling facility, Machining center and most of industrial application
- クレーン、鋼材搬送、製鉄機械、冶金、熱延設備、入庫工作機械、産業プラントなど。

CDKS070 / CDKS095 / CDKS125 / CDKS130 / CDKS180 / CDKS250

# Steel "H" Hole Type スチールホール加工タイプ("H"タイプ)



### ○ Features

- It is made of very durable Aluminum supports which are heat with heat treated bolts.
- Special rubber rings on an Aluminum support prevent wear of cables and hoses.(No customizing)
- Removing unnecessary parts of Link Hole fixers is weight up to 20%(CDK125/130/180)
- Setting hoses, cables in separate holes solves problems of strand, disconnection and transformation.
- Improving sustainability and having plate curved by 1mm prevent it from being crooked, sagged due to the weight of cables and hoses(CDK125/130/180)
- For superior strength and moisture environment to get rust easily, it can be made of stainless steel.

- 耐久性に優れるアルミ製/ステンレス製/樹脂製。
- 特殊したホーリングを使用し耐摩耗のため、ケーブル、ホースの劣化が全く抑止しにくく、錆が懸念される環境下でも使用される場合、ステンレス製も得意です。
- アルミ製/ステンレス製のケーブルに特殊なゴムリングを装着することで、ケーブルの絡み合い、断線防止、変形防止を実現。
- ケーブルにエッジ加工を施すことで強度を大幅にUP。
- 連結部品の一部を丸くすることで材料強度が向上、ペイント作業の効率化をUP。

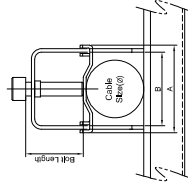
### ○ Applications

- Crane, Heavy Industry Iron and steel mill facility, plant facility, Coil stripping and Rolling facility, Machining center and most of industrial application
- クレーン、鋼材搬送、製鉄機械、冶金、熱延設備、入庫工作機械、産業プラントなど。

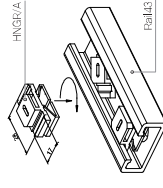
CDKH070 / CDKH095 / CDKH125 / CDKH130 / CDKH180 / CDKH250

Clamp Type Bolt & Cable Size

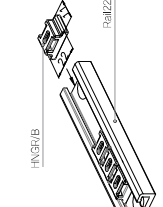
Clamp Type	Wrench Bolt L	Cable (φ)	A (mm)	B (mm)
KC1/A	M8X15L	13-17	24	17
KC1/B	M8X20L	10-12	24	17
KC2/A	M8X15L	22-24	30.4	24
KC2/B	M8X20L	18-21	30.4	24
KC3/B	M8X20L	29-32	38	32
KC3/C	M8X25L	25-28	38	32



HNGR/A Type Ass'y



HNGR/B Type Ass'y



Hanger Maximum Qty - A Type

W80	W100	W120	W130	W200
4EA	6EA	7EA	9EA	11EA
W250	W300	W350	W400	
11EA	17EA	23EA	29EA	

Hanger Maximum Qty : B Type

W50	W65	W75	W80	W87	W100
3EA	4EA	5EA	5EA	6EA	7EA
W120	W150	W160	W175	W187	W200
9EA	11EA	12EA	14EA	14EA	15EA

### ○ Features

- By avoiding twist, separation and pull, it can string out cable's life time.
- Improved for quick assembly.
- Simple cable arrangement.

### ○ Applications

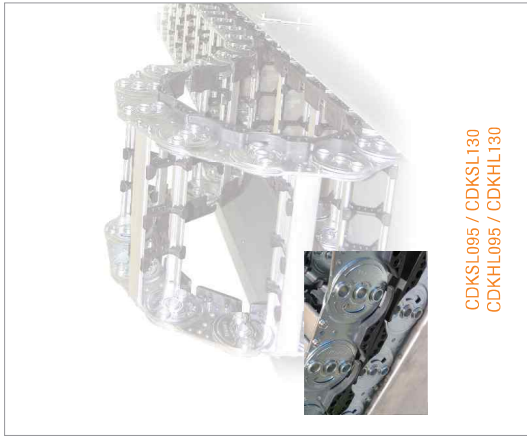
- Machine tools, automation machines and etc.

- ケーブルの絡みやねじれを防止し、断線を防ぐ。
- 機械の品質安定で生産性UP。
- ケーブルを一列に整列が可能。

- 工作機械、自動機、一般産業機械など。



## Long Distance Steel "S", "H" 長距離スチールタイプ("S", "H"タイプ)



CDKSL095 / CDKSL130  
 CDKHL095 / CDKHL130

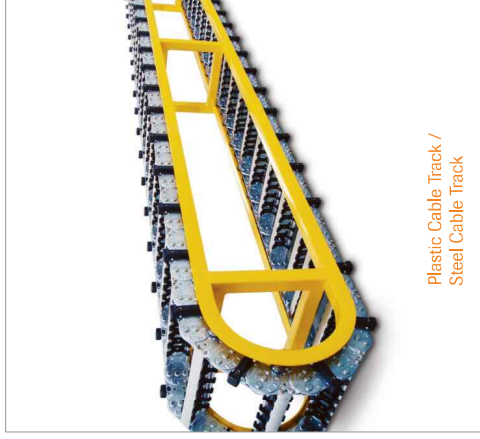
### ○ Features

- Skates provide better operation with lower power and less noise
- The light weight and user friendly installation
- Removing unnecessary parts of Link-Reliefighners its weight up to 20%(CDK/25/130/180)
- For superior strength and moisture environment to get rust easily, it can be made of stainless steel
- To solve a problem of the gap between Link-Plates, we install braces in specific part preventing them from being bent.(CDK/70/095)
- Improving sustainability and having plate curved by 1mm prevent it from being crooked, sagged due to the weight of cables and hoses(CDK125/130/180)
- ロングストロークに対応
- 柔軟性により軽重量、ロングストロークに対応、スケート交換可能。
- クラウドイングスケーターの採用で長寿命、スケート交換可能。
- 低騒音、低摩擦、傾斜法は自由に設計可能。
- 専用ガイドチャネルの使用で更に長寿命が可能。
- クラップ、ボースの設置がきわめて簡単。
- 傾斜性に優れたアルミ、鋼、ステンレス製も可能です。
- リンクハウスの前後で90%軽量化を実現。
- ナイトハウスの前後にエッジ加工を施すことで強度を大幅にUP。
- 建築部品の 溶接加工することで長寿命が可能。
- ベント状態を防止耐久性をUP。

### ○ Applications

- Crane, Heavy Industry, Iron and steel mill facility, client facility, Cold stripping and Rolling facility, Machining center and most of industrial application
- クレーン、船舶機器、製鉄機械、冷延、熱延設備、大型工作機械、産業フロントなど。

## Cable Track System ケーブルトラックシステム



Plastic Cable Track /  
 Steel Cable Track

- Operated by lower power.
- Classified cables into two cut down the half weight.
- Long operation life.
- Guarantee reduced cost in a long time
- Developed design and less dust for clean environment
- Manufacturing machine and Cable Carriage System separately dose not deliver and vibration.
- The length of operation time is more than twice compared to other types and maintenance is easy and simple.

機械とケーブルトラックの完全分離でのメンテナンスが容易になります。

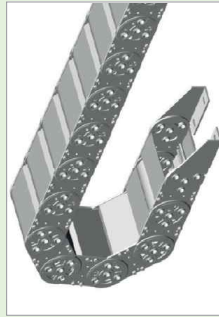
- 一般作業より寿命の倍以上で稼働が期待できます。
- 機械に異音や振動がでても動かせます。
- ケーブルを使用するケーブルはケーブルの劣化が少なくなります。
- ケーブルの寿命が長くなり、ケーブルの交換が容易になります。
- 長期間にわたってメンテナンスが容易になります。
- 最終的に運行稼働が少なく、稼働に優しいです。

### ○ Applications

- Crane, Heavy Industry, Iron and steel mill facility, client facility, Cold stripping and Rolling facility, Machining center and most of industrial application
- クレーン、船舶機器、製鉄機械、冷延、熱延設備、大型工作機械、産業フロントなど。

## Steel Enclosed Type スチール全閉タイプ

### Enclosed Type



### Chipcover Type



### ○ Specification

TYPE	W mm(inch)	Radius mm(inch)	H mm(inch)	W: Width / H: Inside Height mm(inch)
CDKS095	100~400 (3,937~15,748)	125(4,921) 150(5,906) 200(7,874) 250(9,843) 300(11,811) 400(15,748) 481(18,900)	431(16,933) 457(18,000) 481(18,900) 481(18,900) 481(18,900) 481(18,900)	200(7,874) 250(9,843) 300(11,811) 400(15,748) 481(18,900)
CDKS180	300~700 (11,811~27,559)	250(9,843) 300(11,811) 400(15,748) 500(19,685) 600(23,622) 700(27,559)	1008(39,771) 1054(41,341) 1174(46,220) 1374(53,898) 1574(61,576) 1934(76,148)	1008(39,771) 1054(41,341) 1174(46,220) 1374(53,898) 1574(61,576) 1934(76,148)

### ○ Specification

TYPE	W mm(inch)	Radius mm(inch)	H mm(inch)	W: Width / H: Inside Height mm(inch)
CDKS070 / CDKH070	60~300(2,362~11,811)	75(2,953) 100(3,937) 150(5,906) 200(7,874) 250(9,843) 300(11,811)	305(12,008) 330(13,008) 355(13,969) 380(14,945) 405(15,921) 430(16,907)	305(12,008) 330(13,008) 355(13,969) 380(14,945) 405(15,921) 430(16,907)
CDKS095 / CDKH095	100~400(3,937~15,748)	125(4,921) 150(5,906) 200(7,874) 250(9,843) 300(11,811) 400(15,748) 481(18,900)	431(16,933) 457(18,000) 481(18,900) 481(18,900) 481(18,900) 481(18,900)	431(16,933) 457(18,000) 481(18,900) 481(18,900) 481(18,900)
CDKS125 / CDKH125	100~400(3,937~15,748)	125(4,921) 150(5,906) 200(7,874) 250(9,843) 300(11,811) 400(15,748) 481(18,900)	431(16,933) 457(18,000) 481(18,900) 481(18,900) 481(18,900) 481(18,900)	431(16,933) 457(18,000) 481(18,900) 481(18,900) 481(18,900)
CDKS130 / CDKH130	100~400(3,937~15,748)	125(4,921) 150(5,906) 200(7,874) 250(9,843) 300(11,811) 400(15,748) 481(18,900)	431(16,933) 457(18,000) 481(18,900) 481(18,900) 481(18,900) 481(18,900)	431(16,933) 457(18,000) 481(18,900) 481(18,900) 481(18,900)
CDKS180 / CDKH180	300~700(11,811~27,559)	250(9,843) 300(11,811) 400(15,748) 500(19,685) 600(23,622) 700(27,559)	1008(39,771) 1054(41,341) 1174(46,220) 1374(53,898) 1574(61,576) 1934(76,148)	1008(39,771) 1054(41,341) 1174(46,220) 1374(53,898) 1574(61,576) 1934(76,148)
CDKS250 / CDKH250	300~400(11,811~23,622)	250(9,843) 300(11,811) 400(15,748) 500(19,685) 600(23,622) 700(27,559)	1008(39,771) 1054(41,341) 1174(46,220) 1374(53,898) 1574(61,576) 1934(76,148)	1008(39,771) 1054(41,341) 1174(46,220) 1374(53,898) 1574(61,576) 1934(76,148)

1inch = 25,4mm

## Calmly Flex カムリーフレックス



KCF115 / KCF120

### ○ End bracket

TYPE	Radius (mm)	Pitch (mm)	Height (mm)
KCF115	100	25	273,3
	140		353,4
	225		523
KCF120	300	25	673

### ○ End bracket

TYPE	Radius (mm)	Pitch (mm)	Height (mm)
KCF115	150	25	331,8
	200		431,9
	225		541,9
KCF120	300	25	692,1

## Flexible Tube フレキシブルチューブ



Flexible tube is made of Polyamide 6. It is excellent for self-extinguishing and eco-friendly.  
(Hazardous substances are not detected based on RoHS)

ポリアミド6素材で熱によく耐え環境に優しい製品  
(RoHSの結果有害物が発見されていません)



It is simple to cut Flexible tube and adjust lengths conveniently.

切断しやすく長さの調節が容易



Improved flexibility and superior durability.

優れた耐久性や復元力や耐繰り性

### How to assemble connectors and flexible tubes

コネクタ・フレキシブルホース組み立て方



① Push into connector completely  
コネクタを完全に押し込む。



② Check the body and ring is fixed  
コネクタのピンがしっかりと回っていないのを確認する。



③ Push the pin.  
コネクタのピンを引いて開ける。

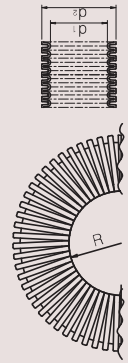


④ Pull out the tube to disassemble  
チューブとコネクタを分離させる。

### Order form

#### KF-10/B-1ROLL

Color  
Size  
Type



### KF Type



Product No.	mm(inch)		Inner Diameter ±0.5	(d1) Outer Diameter ±0.5	(d2) Outer Diameter ±0.5	Bending radius ±10%	Packing standard 1Roll
	Black	Gray					
KF-07/B			6.3 (0.248)	10 (0.394)	15 (0.591)	50M	
KF-10/B			9.5 (0.378)	13 (0.512)	20 (0.787)	50M	
KF-12/B			12 (0.472)	15.8 (0.622)	30 (1.181)	50M	
KF-16/B			16 (0.630)	21.2 (0.835)	40 (1.575)	50M	
KF-22/B			21.9 (0.862)	28.5 (1.122)	45 (1.772)	50M	
KF-28/B			27.8 (1.094)	34.5 (1.358)	50 (1.969)	50M	
KF-36/B			36 (1.417)	42.5 (1.673)	60 (2.362)	30M	
KF-48/B			46.7 (1.839)	54.5 (2.146)	70 (2.756)	30M	

Material: Polyamide 6 (PA 6)

Temperature Range: -40°C ~ +105°C (Short term 150°C)

Protective: IP67/acc

Applications: Automotive lines, Machine tools, Industrial machines, Automation machines, Shipbuilding Yard

Color: Black, Gray (possible to order with various color what you need)

### KFN Type (難燃) Excellent for self-extinguishing



Product No.	mm(inch)		Inner Diameter ±0.5	(d1) Outer Diameter ±0.5	(d2) Outer Diameter ±0.5	Bending radius ±10%	Packing standard 1Roll
	Black	Gray					
KFN-07/B			6.3 (0.248)	10 (0.394)	15 (0.591)	50M	
KFN-10/B			9.5 (0.378)	13 (0.512)	20 (0.787)	50M	
KFN-12/B			12 (0.472)	15.8 (0.622)	30 (1.181)	50M	
KFN-16/B			16 (0.630)	21.2 (0.835)	40 (1.575)	50M	
KFN-22/B			21.9 (0.862)	27.9 (1.122)	45 (1.772)	50M	
KFN-28/B			27.8 (1.094)	34.5 (1.358)	50 (1.969)	50M	
KFN-36/B			36 (1.417)	42.5 (1.673)	60 (2.362)	30M	
KFN-48/B			46.7 (1.839)	54.5 (2.146)	70 (2.756)	30M	

Material: Polyamide 6+α (PA 6+α)

Temperature Range: -50°C ~ +115°C (Short term 160°C)

Protective: IP67/acc

Self Extinguishing: VO-V1

Applications: Automotive lines, Machine tools, Industrial machines, Automation machines, Shipbuilding Yard

Color: Black, Dark Gray, Gray, Light Gray (possible to order with various color what you need)

## Flexible Tube フレキシブルチューブ

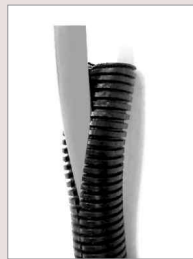
### KFPP Type



Product No.	Inner Diameter ±0.5		Outer Diameter ±0.5	Bending radius ±10%	Packing standard IRoll
	Black	Gray			
KFPP-07/B	6.3 (0.248)	6.3 (0.248)	10 (0.394)	15 (0.591)	50M
KFPP-07/G	6.3 (0.248)	6.3 (0.248)	10 (0.394)	15 (0.591)	50M
KFPP-10/B	9.6 (0.378)	9.6 (0.378)	13 (0.512)	20 (0.787)	50M
KFPP-10/G	9.6 (0.378)	9.6 (0.378)	13 (0.512)	20 (0.787)	50M
KFPP-12/B	12 (0.472)	12 (0.472)	15.8 (0.622)	30 (1.181)	50M
KFPP-12/G	12 (0.472)	12 (0.472)	15.8 (0.622)	30 (1.181)	50M
KFPP-16/B	16 (0.630)	16 (0.630)	21.2 (0.835)	40 (1.575)	50M
KFPP-16/G	16 (0.630)	16 (0.630)	21.2 (0.835)	40 (1.575)	50M
KFPP-22/B	21.9 (0.862)	21.9 (0.862)	28.5 (1.122)	45 (1.772)	50M
KFPP-22/G	21.9 (0.862)	21.9 (0.862)	28.5 (1.122)	45 (1.772)	50M
KFPP-28/B	27.8 (1.094)	27.8 (1.094)	34.5 (1.358)	50 (1.969)	50M
KFPP-28/G	27.8 (1.094)	27.8 (1.094)	34.5 (1.358)	50 (1.969)	50M
KFPP-36/B	36 (1.417)	36 (1.417)	42.5 (1.673)	60 (2.362)	30M
KFPP-36/G	36 (1.417)	36 (1.417)	42.5 (1.673)	60 (2.362)	30M
KFPP-48/B	46.7 (1.839)	46.7 (1.839)	54.5 (2.146)	70 (2.756)	30M
KFPP-48/G	46.7 (1.839)	46.7 (1.839)	54.5 (2.146)	70 (2.756)	30M

- Material: Polypropylene (PP)
- Temperature Range: -15°C ~ +60°C (Short term 80°C)
- Protective: IP67/80cc
- Applications: Automation machines, Machine tools, Industrial machines, Chemical machines
- Color: Black, Gray (possible to order with various color what you need)

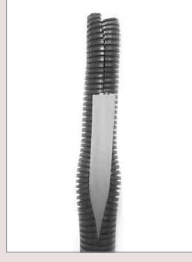
### KFH Type



Product No.	Inner Diameter ±0.5		Outer Diameter ±0.5	Bending radius ±10%	Packing standard IRoll
	Black	Gray			
KFH-07/B	6.3 (0.248)	6.3 (0.248)	10 (0.394)	15 (0.591)	50M
KFH-07/G	6.3 (0.248)	6.3 (0.248)	10 (0.394)	15 (0.591)	50M
KFH-10/B	9.6 (0.378)	9.6 (0.378)	13 (0.512)	20 (0.787)	50M
KFH-10/G	9.6 (0.378)	9.6 (0.378)	13 (0.512)	20 (0.787)	50M
KFH-12/B	12 (0.472)	12 (0.472)	15.8 (0.622)	30 (1.181)	50M
KFH-12/G	12 (0.472)	12 (0.472)	15.8 (0.622)	30 (1.181)	50M
KFH-16/B	16 (0.630)	16 (0.630)	21.2 (0.835)	40 (1.575)	50M
KFH-16/G	16 (0.630)	16 (0.630)	21.2 (0.835)	40 (1.575)	50M
KFH-22/B	21.9 (0.862)	21.9 (0.862)	28.5 (1.122)	45 (1.772)	50M
KFH-22/G	21.9 (0.862)	21.9 (0.862)	28.5 (1.122)	45 (1.772)	50M
KFH-28/B	27.8 (1.094)	27.8 (1.094)	34.5 (1.358)	50 (1.969)	50M
KFH-28/G	27.8 (1.094)	27.8 (1.094)	34.5 (1.358)	50 (1.969)	50M
KFH-36/B	36 (1.417)	36 (1.417)	42.5 (1.673)	60 (2.362)	30M
KFH-36/G	36 (1.417)	36 (1.417)	42.5 (1.673)	60 (2.362)	30M
KFH-48/B	46.7 (1.839)	46.7 (1.839)	54.5 (2.146)	70 (2.756)	30M
KFH-48/G	46.7 (1.839)	46.7 (1.839)	54.5 (2.146)	70 (2.756)	30M

- Material: Polyamide 6 (PA 6)
- Temperature Range: -40°C ~ +105°C (Short term 150°C)
- Protective: IP67/80cc
- Applications: Automotive wiring, Machine tools, Automation machines
- Color: Black, Gray (possible to order with various color what you need)
- "H" type is for open, it is easy to install.

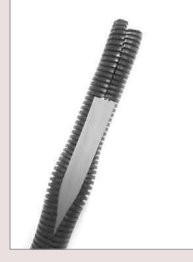
### KFNH Type 難燃 Excellent for self-extinguishing



Product No.	Inner Diameter ±0.5		Outer Diameter ±0.5	Bending radius ±10%	Packing standard IRoll
	Black	Light Gray			
KFNH-07/B	6.3 (0.248)	6.3 (0.248)	10 (0.394)	15 (0.591)	50M
KFNH-07/G	6.3 (0.248)	6.3 (0.248)	10 (0.394)	15 (0.591)	50M
KFNH-10/B	9.6 (0.378)	9.6 (0.378)	13 (0.512)	20 (0.787)	50M
KFNH-10/G	9.6 (0.378)	9.6 (0.378)	13 (0.512)	20 (0.787)	50M
KFNH-12/B	12 (0.472)	12 (0.472)	15.8 (0.622)	30 (1.181)	50M
KFNH-12/G	12 (0.472)	12 (0.472)	15.8 (0.622)	30 (1.181)	50M
KFNH-16/B	16 (0.630)	16 (0.630)	21.2 (0.835)	40 (1.575)	50M
KFNH-16/G	16 (0.630)	16 (0.630)	21.2 (0.835)	40 (1.575)	50M
KFNH-22/B	21.9 (0.862)	21.9 (0.862)	28.5 (1.122)	45 (1.772)	50M
KFNH-22/G	21.9 (0.862)	21.9 (0.862)	28.5 (1.122)	45 (1.772)	50M
KFNH-28/B	27.8 (1.094)	27.8 (1.094)	34.5 (1.358)	50 (1.969)	50M
KFNH-28/G	27.8 (1.094)	27.8 (1.094)	34.5 (1.358)	50 (1.969)	50M
KFNH-36/B	36 (1.417)	36 (1.417)	42.5 (1.673)	60 (2.362)	30M
KFNH-36/G	36 (1.417)	36 (1.417)	42.5 (1.673)	60 (2.362)	30M
KFNH-48/B	46.7 (1.839)	46.7 (1.839)	54.5 (2.146)	70 (2.756)	30M
KFNH-48/G	46.7 (1.839)	46.7 (1.839)	54.5 (2.146)	70 (2.756)	30M

- Material: Polyamide 6tz (PA 6tz)
- Temperature Range: -30°C ~ +115°C (Short term 160°C)
- Protective: IP67/80cc
- Self Extinguishing: VO-VI
- Applications: Automotive wiring, Machine tools, Automation machines
- Color: Black, Light Gray (possible to order with various color what you need)
- "H" type is for open, it is easy to install.

### KFPH Type



Product No.	Inner Diameter ±0.5		Outer Diameter ±0.5	Bending radius ±10%	Packing standard IRoll
	Black	Gray			
KFPH-07/B	6.3 (0.248)	6.3 (0.248)	10 (0.394)	15 (0.591)	50M
KFPH-07/G	6.3 (0.248)	6.3 (0.248)	10 (0.394)	15 (0.591)	50M
KFPH-10/B	9.6 (0.378)	9.6 (0.378)	13 (0.512)	20 (0.787)	50M
KFPH-10/G	9.6 (0.378)	9.6 (0.378)	13 (0.512)	20 (0.787)	50M
KFPH-12/B	12 (0.472)	12 (0.472)	15.8 (0.622)	30 (1.181)	50M
KFPH-12/G	12 (0.472)	12 (0.472)	15.8 (0.622)	30 (1.181)	50M
KFPH-16/B	16 (0.630)	16 (0.630)	21.2 (0.835)	40 (1.575)	50M
KFPH-16/G	16 (0.630)	16 (0.630)	21.2 (0.835)	40 (1.575)	50M
KFPH-22/B	21.9 (0.862)	21.9 (0.862)	28.5 (1.122)	45 (1.772)	50M
KFPH-22/G	21.9 (0.862)	21.9 (0.862)	28.5 (1.122)	45 (1.772)	50M
KFPH-28/B	27.8 (1.094)	27.8 (1.094)	34.5 (1.358)	50 (1.969)	50M
KFPH-28/G	27.8 (1.094)	27.8 (1.094)	34.5 (1.358)	50 (1.969)	50M
KFPH-36/B	36 (1.417)	36 (1.417)	42.5 (1.673)	60 (2.362)	30M
KFPH-36/G	36 (1.417)	36 (1.417)	42.5 (1.673)	60 (2.362)	30M
KFPH-48/B	46.7 (1.839)	46.7 (1.839)	54.5 (2.146)	70 (2.756)	30M
KFPH-48/G	46.7 (1.839)	46.7 (1.839)	54.5 (2.146)	70 (2.756)	30M

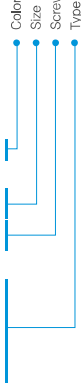
- Material: Polypropylene (PP)
- Temperature Range: -15°C ~ +60°C (Short term 80°C)
- Protective: IP67/80cc
- Applications: Automotive wiring, Machine tools, Automation machines
- Color: Black, Gray (possible to order with various color what you need)
- "H" type is for open, it is easy to install.



# Connector コネクター

## Order form

### KCS10-G10/B-1EA



- Material: Polyamide 6 (PA 6)
- Temperature Range: -40°C ~ +125°C
- Protective: IP67acc
- Applications: Automation machines, Machine tools, Industrial machines, Chemical machines.
- Color: Black, Gray, Light Gray (possible to order with various color what you need)

## PF Thread

Product No.	Gray	Light Gray	Thread	L1	L2	A	A1	B	B1	Applicable tube
KCS10-G10B	KCS10-G10G	KCS10-G10LG	G1/2"	13 (0.512)	26 (1.024)	22 (0.866)	13.5 (0.532)	23.9 (0.923)	13 (0.512)	10
KCS10-G10B	KCS10-G10G	KCS10-G10LG	G1/2"	13 (0.512)	26 (1.024)	22 (0.866)	17 (0.669)	23.9 (0.923)	15 (0.591)	12
KCS10-G10B	KCS10-G10G	KCS10-G10LG	G1/2"	13 (0.512)	26 (1.024)	22 (0.866)	20 (0.787)	23.9 (0.923)	15 (0.591)	16
KCS10-G10B	KCS10-G10G	KCS10-G10LG	G3/4"	15 (0.591)	31 (1.219)	24 (0.945)	24 (0.945)	24 (0.945)	20 (0.787)	22
KCS10-G10B	KCS10-G10G	KCS10-G10LG	G1	15 (0.591)	31 (1.219)	24 (0.945)	31 (1.219)	33.5 (1.307)	21 (0.827)	28
KCS10-G10B	KCS10-G10G	KCS10-G10LG	G1 1/4"	19 (0.748)	41 (1.614)	33 (1.299)	33 (1.299)	41 (1.614)	27 (1.063)	36
KCS10-G10B	KCS10-G10G	KCS10-G10LG	G1 1/2"	19 (0.748)	41 (1.614)	33 (1.299)	35 (1.378)	47.7 (1.879)	41 (1.614)	48
KCS10-G10B	KCS10-G10G	KCS10-G10LG	G2"	19 (0.748)	41 (1.614)	33 (1.299)	35 (1.378)	55 (2.165)	51 (2.008)	48

## PG Thread

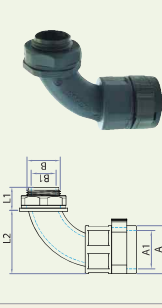
Product No.	Gray	Light Gray	Thread	L1	L2	A	A1	B	B1	Applicable tube
KCS10-H07B	KCS10-H07G	KCS10-H07LG	PG07	130 (5.118)	240 (9.449)	210 (8.271)	129 (5.079)	125 (4.921)	89 (3.504)	7
KCS10-H07B	KCS10-H07G	KCS10-H07LG	PG09	130 (5.118)	240 (9.449)	210 (8.271)	129 (5.079)	152 (5.984)	89 (3.504)	7
KCS10-H07B	KCS10-H07G	KCS10-H07LG	PG11	130 (5.118)	240 (9.449)	210 (8.271)	129 (5.079)	180 (7.087)	89 (3.504)	7
KCS10-H07B	KCS10-H07G	KCS10-H07LG	PG13.5	130 (5.118)	240 (9.449)	210 (8.271)	129 (5.079)	210 (8.271)	89 (3.504)	7
KCS10-H07B	KCS10-H07G	KCS10-H07LG	PG07	130 (5.118)	275 (10.83)	240 (9.449)	154 (6.063)	125 (4.921)	89 (3.504)	10
KCS10-H07B	KCS10-H07G	KCS10-H07LG	PG09	130 (5.118)	275 (10.83)	240 (9.449)	154 (6.063)	152 (5.984)	115 (4.528)	10
KCS10-H07B	KCS10-H07G	KCS10-H07LG	PG11	130 (5.118)	275 (10.83)	240 (9.449)	154 (6.063)	180 (7.087)	115 (4.528)	10
KCS10-H07B	KCS10-H07G	KCS10-H07LG	PG13.5	130 (5.118)	275 (10.83)	240 (9.449)	154 (6.063)	210 (8.271)	115 (4.528)	10
KCS10-H07B	KCS10-H07G	KCS10-H07LG	PG16	130 (5.118)	275 (10.83)	240 (9.449)	154 (6.063)	220 (8.661)	115 (4.528)	10
KCS10-H07B	KCS10-H07G	KCS10-H07LG	PG09	130 (5.118)	291 (11.457)	281 (11.063)	130 (5.118)	152 (5.984)	115 (4.528)	12
KCS10-H07B	KCS10-H07G	KCS10-H07LG	PG11	130 (5.118)	291 (11.457)	281 (11.063)	130 (5.118)	180 (7.087)	120 (4.724)	12
KCS10-H07B	KCS10-H07G	KCS10-H07LG	PG13.5	130 (5.118)	291 (11.457)	281 (11.063)	130 (5.118)	210 (8.271)	120 (4.724)	12
KCS10-H07B	KCS10-H07G	KCS10-H07LG	PG16	130 (5.118)	291 (11.457)	281 (11.063)	130 (5.118)	220 (8.661)	120 (4.724)	12
KCS10-H07B	KCS10-H07G	KCS10-H07LG	PG13.5	130 (5.118)	331 (12.99)	331 (12.99)	240 (9.449)	210 (8.271)	160 (6.300)	16
KCS10-H07B	KCS10-H07G	KCS10-H07LG	PG16	130 (5.118)	331 (12.99)	331 (12.99)	240 (9.449)	220 (8.661)	160 (6.300)	16
KCS10-H07B	KCS10-H07G	KCS10-H07LG	PG21	130 (5.118)	331 (12.99)	331 (12.99)	240 (9.449)	240 (9.449)	160 (6.300)	16
KCS10-H07B	KCS10-H07G	KCS10-H07LG	PG16	130 (5.118)	371 (14.57)	421 (16.54)	318 (12.52)	220 (8.661)	180 (7.087)	22
KCS10-H07B	KCS10-H07G	KCS10-H07LG	PG21	130 (5.118)	371 (14.57)	421 (16.54)	318 (12.52)	230 (9.056)	180 (7.087)	22
KCS10-H07B	KCS10-H07G	KCS10-H07LG	PG29	130 (5.118)	371 (14.57)	461 (18.11)	351 (13.78)	301 (11.79)	200 (7.874)	28
KCS10-H07B	KCS10-H07G	KCS10-H07LG	PG36	130 (5.118)	431 (16.93)	552 (21.73)	431 (16.93)	471 (18.54)	301 (11.79)	36
KCS10-H07B	KCS10-H07G	KCS10-H07LG	PG48	210 (8.271)	491 (19.33)	612 (24.13)	592 (23.31)	592 (23.31)	529 (20.87)	48

## KCS Type



- Material: Polyamide 6 (PA 6)
- Temperature Range: -40°C ~ +125°C
- Protective: IP67acc
- Applications: Automation machines, Machine tools, Industrial machines, Chemical machines.
- Color: Black, Gray, Light Gray (possible to order with various color what you need)

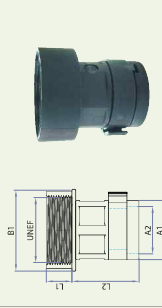
## KCE Type



- Material: Polyamide 6 (PA 6)
- Temperature Range: -40°C ~ +125°C
- Protective: IP67acc
- Applications: Automation machines, Machine tools, Industrial machines, Chemical machines.
- Color: Black, Gray, Light Gray (possible to order with various color what you need)

Order no.	Gray	Light Gray	Thread	L1	L2	A	A1	B	B1	Applicable tube	mm(inch)
KCE-500B	KCE-500G	KCE-500LG	G1/2"	13 (0.512)	28 (1.102)	22 (0.866)	13.5 (0.532)	23.9 (0.923)	11 (0.433)	10	80ea
KCE-502B	KCE-502G	KCE-502LG	G1/2"	13 (0.512)	33 (1.299)	26 (1.024)	17 (0.669)	23.9 (0.923)	14 (0.551)	12	50ea
KCE-506B	KCE-506G	KCE-506LG	G1/2"	13 (0.512)	41 (1.614)	31 (1.219)	22 (0.866)	23.9 (0.923)	16 (0.63)	16	40ea
KCE-522B	KCE-522G	KCE-522LG	G3/4"	15 (0.591)	43 (1.693)	40 (1.575)	23.5 (0.925)	24.0 (0.945)	20 (0.787)	22	20ea
KCE-528B	KCE-528G	KCE-528LG	G1"	15 (0.591)	53 (2.087)	46 (1.811)	31 (1.219)	33.2 (1.307)	27 (1.063)	28	10ea
KCE-538B	KCE-538G	KCE-538LG	G1 1/4"	19 (0.748)	70 (2.756)	55 (2.165)	43 (1.693)	49 (1.929)	35 (1.378)	36	6ea
KCE-548B	KCE-548G	KCE-548LG	G1 1/2"	19 (0.748)	91 (3.583)	67 (2.638)	47 (1.850)	55 (2.165)	41 (1.614)	48	4ea
KCE-568B	KCE-568G	KCE-568LG	G2"	19 (0.748)	91 (3.583)	67 (2.638)	47 (1.850)	65 (2.559)	43 (1.693)	48	4ea

## KCM Type



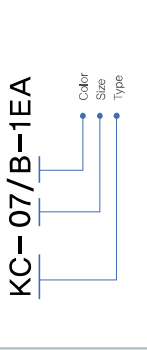
- Material: Polyamide 6 (PA 6)
- Temperature Range: -40°C ~ +125°C
- Protective: IP67acc
- Applications: Automation machines, Machine tools, Industrial machines, Chemical machines.
- Color: Black, Gray (possible to order with various color what you need)
- Features: Can be use for MS common plug (MS connector) joint connector.
- Anti flexibility and superior durability.

Product No.	Gray	Thread	L1	L2	A1	A2	B1	Applicable tube	mm(inch)
KCM1616B	KCM1616G	7/8-20UNF	16.16S	15 (0.59)	30 (1.18)	22 (0.87)	26 (1.02)	16 (0.63)	70ea
KCM1618B	KCM1618G	1-20UNF	18	15 (0.59)	30 (1.18)	22 (0.87)	24 (0.94)	16 (0.63)	70ea
KCM1620B	KCM1620G	1 3/16-18UNF	20.22	15 (0.59)	30 (1.18)	22 (0.87)	34 (1.33)	16 (0.63)	70ea
KCM1628B	KCM1628G	1 7/16-18UNF	24.28	15 (0.59)	30 (1.18)	22 (0.87)	43 (1.69)	16 (0.63)	60ea
KCM2222B	KCM2222G	1 3/8-18UNF	20.22	17 (0.67)	32 (1.26)	40 (1.57)	34 (1.33)	22 (0.87)	30ea
KCM2228B	KCM2228G	1 7/16-18UNF	24.28	17 (0.67)	32 (1.26)	40 (1.57)	43 (1.69)	22 (0.87)	30ea
KCM2828B	KCM2828G	1 7/16-18UNF	24.28	17 (0.67)	37 (1.46)	46 (1.81)	43 (1.69)	28 (1.10)	25ea
KCM2832B	KCM2832G	1 3/4-18UNF	32	17 (0.67)	37 (1.46)	46 (1.81)	43 (1.69)	28 (1.10)	24ea
KCM3636B	KCM3636G	2-18UNS	36	17 (0.67)	35 (1.38)	53 (2.09)	53 (2.09)	36 (1.42)	15ea

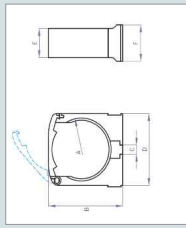
# Clamp クランプ

# Spring Tube スプリングチューブ

## Order form



## KC Type

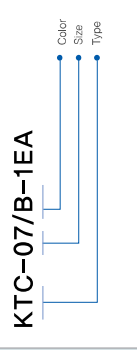


Product No.		mm(inch)									
Black	Gray	A	B	C	D	E	F				
KC-07/B	KC-07/G	10 (0.394)	20 (0.787)	4 (0.157)	17 (0.669)	16 (0.63)	20 (0.787)				
KC-07/B	KC-07/G	15.2 (0.598)	20 (0.787)	4 (0.157)	20 (0.787)	16 (0.63)	20 (0.787)				
KC-12/B	KC-12/G	16.2 (0.638)	26 (1.024)	5 (0.197)	22 (0.866)	16 (0.63)	20 (0.787)				
KC-16/B	KC-16/G	17.7 (0.697)	33 (1.299)	5 (0.197)	25 (0.984)	16 (0.63)	20 (0.787)				
KC-22/B	KC-22/G	23.2 (0.913)	40 (1.575)	6 (0.236)	35 (1.378)	16 (0.63)	20 (0.787)				
KC-28/B	KC-28/G	35 (1.378)	46 (1.811)	6 (0.236)	40 (1.575)	20 (0.787)	25 (0.984)				
KC-36/B	KC-36/G	43.2 (1.701)	54 (2.126)	6 (0.236)	50 (1.969)	20 (0.787)	25 (0.984)				
KC-48/B	KC-48/G	54.3 (2.134)	67 (2.638)	6 (0.236)	65 (2.5)	20 (0.787)	25 (0.984)				

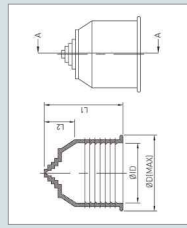
Material: Polyamide 6 (PA 6) · Temperature Range: -40°C ~ +125°C · Applications: It is for Fixing Flexible tube and cables with Automation machines, Machine tools, Industrial machines. Color: Black, Gray, Light Gray (possible to order with various color what you need)

# FLEXIBLE TUBE END CAP

## Order form



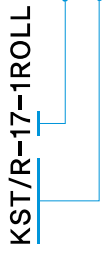
## KTC Type



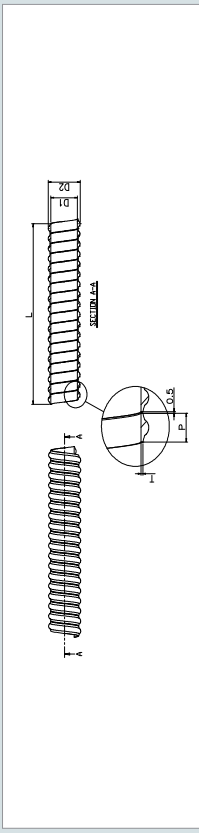
Product No.		mm(inch)									
Black	Gray	ID	D	L1	L2	Applicable Tube	Packing Standard				
KTC-07/B	KTC-07/G	10(0.39)	16(0.63)	23.3(1.1)	8.9(0.35)	7	150				
KTC-10/B	KTC-10/G	20(0.79)	20(0.79)	32(1.26)	10.8(0.43)	10	100				
KTC-12/B	KTC-12/G	16(0.63)	25(0.98)	35(1.38)	15(0.59)	12	200				
KTC-16/B	KTC-16/G	21.5(0.85)	29.5(1.16)	35(1.38)	15.5(0.61)	16	120				
KTC-22/B	KTC-22/G	29(1.14)	37(1.46)	35(1.38)	12.2(0.48)	22	70				
KTC-28/B	KTC-28/G	34.5(1.36)	44(1.73)	41(1.61)	14.2(0.56)	28	50				
KTC-36/B	KTC-36/G	43(1.69)	54(2.13)	51(2.01)	22(0.87)	36	20				
KTC-48/B	KTC-48/G	54.5(2.15)	64(2.52)	51(2.01)	22(0.87)	48	15				

Material: NBR (Nitrile butadiene Rubber) · Properties: Tubeterminal assembled by just putting on · Color: Black & Gray  
 For tube type: corrugated tubes

## Order form



## KST/R Type

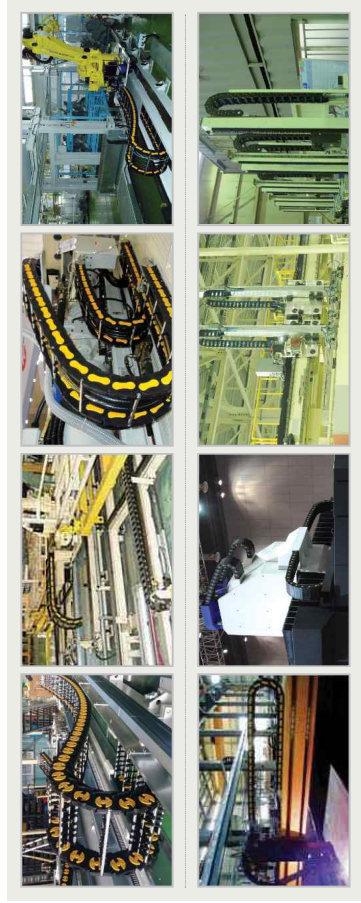


Type	D1 mm	D2 mm	P mm	T mm	Packing Standard	Weight (1M/kg)
KST/R-12	12.2	18	18.5	1	3M	0.08
KST/R-14	14.6	20.5	18.6	1	3M	0.09
KST/R-15	15	21	19	1	3M	0.09
KST/R-16	16	22.5	20.3	1.1	3M	0.10
KST/R-17	17.5	24	20	1.1	3M	0.11
KST/R-19	20	27	20.7	1.1	3M	0.12
KST/R-22	22	30	20	1.2	3M	0.14
KST/R-24	24	31	19.3	1.2	3M	0.15
KST/R-26	26	33	21	1.25	3M	0.16
KST/R-28	28.5	35.3	21.8	1.25	3M	0.17
KST/R-30	30	36.5	21	1.3	3M	0.19
KST/R-32	32	39	20.5	1.4	3M	0.23
KST/R-36	37.5	44.5	21.8	1.5	3M	0.26
KST/R-38	43.6	52.5	24.6	1.5	3M	0.35
KST/R-45	45	54	25.3	1.75	3M	0.43
KST/R-55	53.5	63	26.6	2	3M	0.60
KST/R-65	63.8	74	28.6	2	3M	0.71

Material: HDPE · Color: Black

## Plastic Cable Carrier Application

### Application



## Steel Cable Carrier Application

### Application



## Customer

