

MERCURY **MERC**CRUISER

135 HP to 430 HP



M E R C U R Y M A R I N E



A Pioneer in Boating Power

With the release of the first MerCruiser sterndrive at the Chicago Boat Show in 1961, Mercury Marine founder Carl Kiekhaefer forever changed the boating industry. Until then, outboards were the standard in marine engines, but Kiekhaefer's sterndrive allowed boaters to maintain outboard-like maneuverability in a package that offered unprecedented recreational boating power. With its already stellar marine reputation, MerCruiser quickly captured a commanding majority of the recreational market. Now celebrating its 50th anniversary, MerCruiser continues to lead the industry, guided by the same trailblazing ethic that inspired Kiekhaefer's historic first sterndrive.

50 years
1961-2011
MerCruiser

The Next 50—and Beyond

For a half century, MerCruiser has been synonymous with unrivaled sterndrive and inboard performance. It all starts with a diverse selection of engines ranging from 135 to 430 hp, and more than 20 unique drive systems including Alpha One—the most popular sterndrive in the world. With the most complete lineup in the industry crafted by expert engineers, you're certain to find a MerCruiser engine-drive combination perfect for your boating style. Mercury enhances these offerings with complementary marine innovations such as Axis, the intuitive joystick-control system, and the stalwart corrosion protection of MerCruiser SeaCore. With decades of industry leadership and an eye to the future, the MerCruiser legend continues to grow.



The MerCruiser Way

For five decades, MerCruiser has worked tirelessly to maintain and grow its reputation as the most trusted sterndrive brand on the planet. MerCruiser has been able to stay at the forefront of marine engineering by remaining true to its four brand pillars: an unmatched product lineup, innovative integrated technologies, reliable and durable engines and drives, and an unrivaled service network.



Proven Technology It's not enough to be all flash with no substance. To stay at the front of the pack, MerCruiser subjects all its products to the industry's most stringent standards. Our engines, drives and electronic systems undergo thorough, multifaceted tests long before they hit the market. You know when you entrust your hard-earned money to MerCruiser, you're investing in proven performance technology.



A Comprehensive Lineup Every boater has unique values and expectations for their on-water pursuits. That's why MerCruiser is committed to offering the most complete gasoline sterndrive product selection in the industry. With a wide range of engines, each with even deeper features and options, MerCruiser prides itself on having propulsion and technology systems for every boating style.



Reliable, Dependable MerCruiser crafts every sterndrive that comes off the line with numerous features to ensure best-in-class reliability and dependability. MerCruiser understands that when you are on the water, you're there to escape the stresses of daily life, not add to them. That's why MerCruiser sterndrives are built tough and built to last, to deliver the most critical benefit of all—peace of mind.



The Network With the largest marine network domestically and internationally, you're never too far from expert MerCruiser support. All MerCruiser service technicians go through rigorous training processes before being certified, and direct support from MerCruiser is always a call away. We make our global network a top priority, so that skilled and professional service is always close at hand for you.



ECT: Green Solutions for the Open Blue

MerCruiser's Emissions Control Technology ensures clean, environmentally friendly boating without sacrificing performance.



As a marine industry leader, MerCruiser understands the responsibility it bears to help take care of the waters we boat on and the destinations we seek. That's why we have made a commitment to Emissions Control Technology (ECT), offering a full line of sterndrive and inboard engines in the 135-430 hp range that comply with the California Air Resource Board (CARB) and the Environmental Protection Agency (EPA) emissions requirements.

To meet these emissions standards, Mercury Marine utilizes a reliable catalyst system that produces cleaner exhaust without limiting classic MerCruiser performance. That means you get the full rush of pure MerCruiser power, all while helping to preserve that fresh wind whipping by as you cruise along—not to mention keeping our greens green and, of course, our blues blue.



SmartCraft ECO-Screen

Working hand-in-hand with MerCruiser's ECT system is the SmartCraft ECO-screen, a feature that tells you what you need to do while driving your boat to obtain the best fuel economy for your application. Find out more about the ECO-Screen on page 27.

Catalyzed Technology, Classic Power



Nobody else offers a more comprehensive selection of catalyzed engines than MerCruiser. From the wildly popular 3.0L all the way up to the 8.2L big block, only MerCruiser has had the insight and wherewithal to invest in this game-changing technology to ensure its availability on a global scale.

MerCruiser has developed its catalyzed engine lineup with its trademark technological acumen, accomplishing significant emissions reductions while still being able to offer classic MerCruiser speed and acceleration. You get the same performance as a non-ECT engine but with 5 to 10 percent better cruising fuel economy, not to mention similar gains in noise reduction.

Keeping with tradition, MerCruiser's catalyzed engines are incredibly reliable thanks to extensive testing and development. You'll get consistent performance throughout the life of the engine, meaning your engine will perform the same in year 10 as it did when you first bought it.

And, of course, when you select a MerCruiser catalyzed engine, you also team up with the largest and most expert dealer and service network on the planet. How's that for assurance?



3.0L

Dependable, low-maintenance 3.0L MerCruiser sterndrives allow you to hit the lake in stride for all kinds of family fun





3.0L Essentials

One of the most popular sterndrives on the planet thanks to outstanding reliability and serviceability

- The ideal propulsion choice for runabouts up to 19 feet, but also versatile enough to be a great fit for pontoons and houseboats
- Excellent choice both for people looking to cruise in comfort, and for active families who need the power to pull kids tubing and skiing
- Incredible ease of ownership: durable, low-maintenance, widely available parts
- Backed by MerCruiser's extensive global network, with dealers thoroughly trained on 3.0L model—meaning expert service is never too far away

The 3.0L has been a favorite sterndrive engine choice for years thanks to its low-maintenance upkeep and dependability over the long run.



MPI = Surefire Reliability

MerCruiser's 3.0L sterndrives feature a cutting-edge sequential multiport fuel injection (MPI) system, which precisely outlines the exact amount of fuel for all driving conditions. The advantages of MPI technology include easier startup regardless of external temperatures, smooth and stable idling, better throttle response, increased fuel efficiency and, over the long haul, reduced cost of operation.



Proven Features

MerCruiser's engineers take great care to integrate technology into its engines that can generate proven advantages in test after test. MerCruiser's 3.0L sterndrives gain from many such innovations, including Mercury's exclusive Engine Guardian, which senses potential problems and virtually eliminates the chance for engine or drive damage from overheating, low oil pressure or low drive lubricant. Another, Mercury's SmartCraft system, delivers information regarding critical engine functions, such as fuel usage and RPM, in an easy-to-read display at the helm.



Built for the Long Haul

MerCruiser's 3.0L sterndrives feature numerous design elements to help put your mind at ease and bolster your engine's long-term reliability. The 3.0L has been a favorite sterndrive engine choice for years thanks to its low-maintenance upkeep and classic dependability over the long run, no matter how you choose to spend your time on the water.



4.3L

Easy to own with superb reliability, MerCruiser's 4.3L sterndrives afford you peace of mind while you're out cruising and entertaining



4.3L Essentials

Versatile platform that's a great fit for everything from runabouts to pontoons to houseboats

- Ample power for a range of pursuits, from towing skiers and tubers on an 18-foot runabout to dual-engine applications on a larger cruiser
- Durable V6 configuration affords trouble-free ownership and delivers impressive torque for quick acceleration and planing
- Can be paired with Alpha One drive—the most popular sterndrive in the world—or Bravo drives, excellent for cruising applications
- SeaCore offers unmatched corrosion protection thanks to industrial hardcoat anodizing, stainless steel components, exclusive low-copper alloy and other advances

Mercury is committed to developing innovative and sound technology that contributes to a more seamless boating experience.

Available with:



Power You Can Count On

MerCruiser's 4.3L sterndrives are built to give you that classic Mercury burst with the stamina to run all day long, and then some. The strapping V6 design lends toughness, power and efficiency, while ensuring reliable, purring starts every time. Put all that together, and you've got a rock-solid package that's ready for liftoff.



High Tech, Low Stress

You want the performance without the headaches. That's why Mercury is committed to developing innovative and sound technology that contributes to a more seamless boating experience. MerCruiser's 4.3L sterndrives feature Engine Guardian technology that monitors your engine's vitals to help protect your investment for the long run; power steering reduces the effort needed for steering while providing enhanced hull control at all speeds. Now, that's more like it.



Driven to Perform

A MerCruiser 4.3L engine can team up with several of Mercury's popular drives—including Alpha and Bravo (see page 22 for more information on MerCruiser drives)—for robust long-term durability. Standard on Bravo drive models and available on Alpha One drives, MerCathode Corrosion Protection is an active cathodic corrosion-protection system that feeds electrons to underwater hardware and drive units, bolstering your sterndrive's toughness against the corrosive wear and tear of regular use.



5.0L, 350 MAG & 377 MAG

Smooth-running and fuel-efficient midsize stern drives set your cruising ambitions free





Small Block Essentials

Dependable and versatile, MerCruiser small block engines are ideal for runabouts and cruisers, delivering rock-solid performance and allowing you to enjoy the activities you want to, when you want to

- MerCruiser small block V8s are the premier option for runabout owners seeking the best available power configuration
- Owners of dual-engine cruisers up to 38 feet will find steadfast performance in MerCruiser small blocks with features such as the intuitive joystick control of Axius, which allows precise and easy boat maneuverability
- Reap the benefits of standard SmartCraft Digital Throttle & Shift: smooth shifting, immediate throttle response, and cutting-edge digital controls and information displays
- SmartCraft features such as ECO-Screen help you optimize fuel economy; MercMonitor lets you customize data readouts displayed on an easy-to-read LED screen

Available with:



12th-Round Toughness

MerCruiser's 5.0L, 350 MAG (5.7L) and 377 MAG (6.2L) sterndrives bring proven V8 durability to the table. Their robust, efficient design optimizes acceleration and longevity. Standard on Bravo drive pairings and available with Alpha drives, MerCathode Corrosion Protection gives your system the edge it needs to combat the rigors of heavy use and the marine environment.



Brains and Brawn

Mercury's exclusive SmartCraft technology acutely monitors the vitals of your engine systems, such as fuel usage, RPM, engine trim and efficiency, and delivers them to you in an easy-to-read digital display. SmartCraft functions such as SmartTow—which optimizes watersports settings—take the complication out of piloting so that you can focus on maximizing fun out on the water.



All-Around Performer

MerCruiser offers small block 5.7 and 6.2L inboards, as well. (See page 14.) An inboard configuration makes these V8 engines perfect for those looking to wakeboard, ski or efficiently power traditional cruisers.



8.2L

Responsive, dependable and remarkably easy to operate, powerful MerCruiser 8.2L sterndrives give you total command





Big Block Essentials

MerCruiser 8.2L V8 big block engines deliver industry-leading reliability, performance and ease of ownership

- The all-new 8.2L V8 is a bruiser on the water, with sensational acceleration, immediate planing and superior mid-range throttle response
- Achieve smooth operation and unsurpassed responsiveness with the Digital Throttle & Shift system
- High-output alternator generates 65 percent more power
- Bulletproof reliability against the rigors of everyday marine use thanks to industry-leading standard anti-corrosion and the optional SeaCore system
- Exclusive Engine Guardian system protects against low oil pressure, low drive lube levels and overheating, virtually eliminating any chance for engine damage

Available with:



The Future is Now

MerCruiser's 8.2L V8 sterndrive, the first new big block engine to come out in more than a decade, is designed for easy ownership and efficient operation, with proven reliability. The 8.2L sterndrive is eminently simple to maintain, with straightforward drive lube monitoring, water drainage, fluid servicing and standard freshwater cooling. MerCruiser has also fit the big block with its tried-and-true MerCathode Corrosion Prevention system and Engine Guardian monitoring system for unmatched reliability and longevity.



A High-Performance Legacy

The 8.2L V8 was engineered in collaboration with the legendary Mercury Racing team, and it's clear the full-throttle brethren left a serious impression. The V8 powerhouse flies with sensational acceleration, immediate planing and superior mid-range throttle response. With superb fuel efficiency and top-notch performance, the new 8.2L V8 is the future of MerCruiser power.



Big Block, Small Maintenance

Stepping it up in power doesn't mean taking care of your engine has to be more complicated. MerCruiser's 8.2L V8 is remarkably easy to maintain: oil changes are clean, quick and simple via a convenient top-mounted filter and dipstick tube, and fluid checks are just as straightforward thanks to color-coded service points. The 8.2L also runs on less-expensive and easy-to-find 87 octane fuel.



INBOARDS

Offering top-notch performance and efficiency, Horizon engines deliver long-lasting, easy-to-own inboard power



HORIZON

MerCruiser's Horizon inboards are classic performers, with proven technology that's virtually maintenance-free

- Near-universal dealer and technician training on Horizon inboard models
- Electronic multipoint fuel injection affords instant startup, effortless cruising and quintessential MerCruiser reliability
- Closed-cooling technology dramatically reduces potential for corrosion, extending the life of your engine and your boating season
- Stainless steel exhaust, durable designs and simple maintenance all contribute to remarkably easy ownership

Available with:



Exceptional Selection

MerCruiser is the only company that offers both stern-drive and inboard gasoline engines. We know that one size doesn't fit all, which is why we give you the choice of the best marinated versions of each technology. MerCruiser has the broadest horsepower range (135 to 430 hp) in these categories, as well, and no one else offers a comparable lineup of catalyzed sterndrive and inboard engines.



Innovation is Standard

State-of-the-art technology is the norm at MerCruiser. For you, that means cutting-edge features come standard on every Horizon inboard, including Mercury's SmartCraft Digital Throttle & Shift. Boaters rave about the precise throttle response and effortless steering delivered by the DTS system. MerCruiser Horizon inboards also boast standard MerCruiser Emissions Control Technology (ECT), which allows you to cruise cleanly without any loss of power, performance or fuel efficiency.



Got Your Back

All MerCruiser Horizon inboards come with a standard 4 year limited corrosion warranty as well as a standard 3 year limited factory-backed warranty—which includes a fourth year if your boat builder has participated in the MerCruiser Installation Quality Certification program.* Need more assurance? Nobody has more factory-trained service dealers than MerCruiser, so if you ever have an issue or need to talk to an expert, there's bound to be one close by.

**For a list of all IQ Certified boat builders, visit mercurymarine.com.*



T H E R I G H T A N G L E S



Elevate your boating experience with Axis, Mercury's proven and intuitive joystick-control technology.

Mercury's innovative joystick-control Axis system is the perfect remedy for boat maneuvering and docking woes. Axis allows you to dock in a safe and relaxed way, regardless of close quarters, cross currents or side winds. The intuitive and natural user interface gives you total boat control with one hand, meaning anybody can dock safely with total confidence.

The Axis system also delivers innovative navigation features such as Skyhook, a station keeping system that holds your boat in place based on GPS positioning, regardless of wind and water conditions. Waypoint control allows you to set a course on your chartplotter that your boat will follow automatically. With Axis, boat control and navigation have never been easier or more precise. The future of boating is here.



“Life-changing is definitely the word. Axis is the best invention in boating.”
-Jeni Smith, boat owner



Docking Mode

Engaging the Axis Docking Mode through Digital Throttle & Shift (DTS) reduces the authority of the joystick for a more refined touch when docking in either windy or calm conditions.



A Next-Level Cruising Experience

MerCruiser's Axis system uses a joystick to control steering, throttles and shifters at the same time, offering complete boat maneuverability with one hand. The interface is simple and intuitive: Move the joystick in the direction you want to go, and the further you move it, the faster the boat will travel in that direction. With the Axis system your sterndrives move independently of each other, allowing them to achieve the lateral movement needed to pull off close-quarter maneuvers with ease.



Proven Technology

Built on Mercury's proven SmartCraft Integrated Technology, the Axis system seamlessly performs alongside your Digital Throttle & Shift and power steering. The joystick controls two independently steered Bravo Three sterndrives through a network of onboard computers. Rigorously tested and repeatedly proven in the field, Axis fluidly translates a complex system to a one-handed joystick interface that is natural and easy to operate.



Axis Premier

For boaters in search of cutting-edge, yet intuitive, navigational technology, the Axis Premier system delivers. Axis Premier takes state-of-the-art joystick docking capabilities and adds several innovative and easy-to-use new features. Among these are Skyhook, which maintains your boat's position via GPS regardless of wind and current, and Auto Heading, which automatically keeps your boat on course (see chart on page 18).



JOYSTICK CONTROL SYSTEM

Experience worry-free docking with the first fully intuitive piloting system on the water.

The Axis Premier Advantage

Upgrade to Axis Premier and take your navigational capabilities to the next level.

MerCruiser
Sterndrives
w/Axis Premier

FEATURES & ATTRIBUTES

Joystick Functionality	
Move sideways and at an angle	✓
Rotate in own length or 360° on an axis	✓
Intuitive, proportional control of thrust and speed in any direction	✓
Enhanced docking control mode	✓
Safety, Reliability & Durability	
Proven, rear-facing propellers	✓
Shallow draft design for less water displacement	✓
More than 50,000 hours of endurance testing	✓
Precision Navigation	
Skyhook Station Keeping	✓
Auto Heading	✓
Waypoint Control	✓
VesselView	✓

Comfortable Fit

The ergonomically designed joystick is built for comfort and ease of use, giving you better handling and more intuitive control.

Proportional Control

The Axis joystick responds to both the direction you move it and the pressure you apply, providing smooth and accurate control at your touch. To move to the left, push the joystick to the left. To go faster, apply more pressure.



Twist the Axis joystick to turn the boat within its own length. An ideal maneuver for changing directions in a tight space.

Move the Axis joystick to the left, right or at any angle to move your boat precisely at your control.



Move the Axis joystick toward the bow or stern of the boat to move directly forward or backward.





The Axius CAN Control Pad allows you to chart your path, make course corrections and hold position with the touch of a finger.

The Axius CAN Control Pad



A key feature exclusive to the Axius Premier package, the convenient and easy-to-use Axius CAN Control Pad offers a range of useful navigational operations at the touch of a finger.

A Skyhook Station Keeping

If you've ever found yourself in a situation waiting for a bridge to open, or were next in line at a fuel dock slip, or needed to hold steady to fish a specific spot in high winds, you probably could've benefited from having the Axius Skyhook Station Keeping system. When engaged, Skyhook pinpoints your boat's position using a GPS satellite antenna, then works with the engines and drives to maintain that position regardless of wind or current. Skyhook helps you keep your boat steady in any circumstance at the push of a button—it really is that easy.

B Auto Heading

The Auto Heading feature on your Axius CAN Control Pad uses a built-in digital compass to allow the captain to maintain course and make precise corrections easily, with the touch of the finger. When you enable Auto Heading, you can vary your course port or starboard by using the arrow keys on the control pad, changing it 10 degrees per tap. You can also use the joystick to correct your course, tapping it port or starboard to adjust in 1-degree increments.

C Waypoint Sequence

Axius Waypoint Sequencing is chartplotting, evolved. Through your VesselView screen, the Waypoint Sequence feature allows you to plot your boat's course—with multiple points in between—to your final destination. Once you program your route, the system precisely navigates it, making "getting there" a breeze.



Only MerCruiser Protects You to the CORE



MerCruiser's SeaCore system is the world's premier saltwater system. Rather than just enclosing the drive components in a plastic shell, we protect them to the core with industrial hardcoat anodizing, a closed-cooling system and widespread use of stainless steel components to ensure your MerCruiser engine handles the rigors of the saltwater environment over the long haul.

MerCruiser stands behind its state-of-the-art SeaCore system with a four-year factory limited warranty and a four-year limited warranty against corrosion failure. MerCruiser offers such a rock-solid warranty because SeaCore is proven technology—the toughest saltwater protection system on the planet.



MerCruiser's SeaCore corrosion-protection technology gives your sterndrive legendary strength and durability

- Exclusive low-copper, high-strength XK360 aluminum alloy provides unmatched corrosion resistance
- The MercFusion paint system creates a tough, durable barrier to protect your engine
- Closed-cooling system seals out saltwater from the block using 5-year, long-life coolant for long-term durability
- Quality-grade 316 stainless steel components, including all underwater drive fasteners, steering shaft and motor mounts, are incredibly durable
- MerCathode actively prevents corrosion
- Hard anodizing and sealing treatment is more abrasion-resistant for added corrosion protection
- A four year limited corrosion failure warranty offers confidence and peace of mind in your engine's long-term durability

In a 2-year test period in a normal saltwater environment, SeaCore hardcoat-anodized units were 25 times more corrosion-resistant.



Hardcore Hardcoat

MerCruiser's SeaCore technology is a comprehensive corrosion protection system developed to ensure your MerCruiser engine handles the rigors of the marine environment over the long haul. SeaCore's unique hardcoat anodizing process changes the molecular structure of the engine's aluminum alloy in order to create a shield against corrosion—creating a more abrasion-resistant surface than competitive paint processes. The exclusive XK360 aluminum alloy of SeaCore has extremely low levels of copper—a metal highly susceptible to corrosion—making it incredibly resistant to wear.

Additional built-in corrosion features, including a closed-cooling system, which seals out saltwater from the block, and widespread use of stainless steel parts impervious to saltwater corrosion, contribute to a SeaCore system which is the toughest and most complete corrosion-resistant technology on the water.



If you purchase your boat from a MerCruiser IQ Certified boat builder, you will receive an additional year of limited factory-backed warranty.

Visit www.mercurymarine.com for a list of IQ Certified dealers.

SeaCore engines come with 4 years of limited corrosion warranty.



Driven Performance for Any Boating Style



MerCruiser's comprehensive selection of drive systems—from the most popular sterndrive in the world, Alpha One, to the robust Bravo Series drives—is the envy of the industry.

The Alpha One drive—suitable for single or twin applications up to 65 mph for gas engines up to 300 hp—delivers reliable performance in a value package. MerCruiser's full-throttle Bravo One drive allows you to push it to the limit with best-in-class performance for single, twin or triple applications. The brawny Bravo Two drive is ideal for big cruisers and houseboats, while the twin-prop Bravo Three permits best-in-class shifting and precise maneuverability. No matter what wild blue destination calls to you, MerCruiser has a no-hassle drive built to get you there and back with ease.



Alpha One Drive

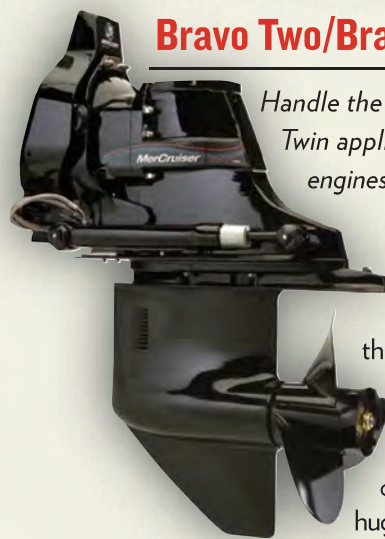
The most popular sterndrive in the world. Single/twin applications up to 65 mph for gas engines up to 300 hp



The Alpha® One drive earned the title of “world’s most popular sterndrive” because it delivers reliable performance in a value package. Reliable performance means more family fun year after year without missing a beat. Alpha One drives slice through the water with an efficient hydrodynamic profile producing very little drag. And, because of the Alpha drive’s many maintenance-free features, you’ll enjoy a worry-free ownership experience.

Bravo Two/Bravo Two X

Handle the biggest boats with authority. Twin applications up to 55 mph for gas engines up to 450 hp



The unique Bravo Two drive has an unmatched ability to maximize lift and thrust for cruisers and houseboats without breaking a sweat. Due to the girth of the gearcase, Bravo Two is capable of accommodating a huge 20-inch diameter prop with deeper gear ratios. This allows the Bravo Two to deliver high thrust around the dock, quick planing and improved fuel economy—putting you in control. Maintenance-free hinge pins allow for easy service without having to pull the boat from the water.

Bravo One/Bravo One X/ Bravo One XR

Great performance starts with heart. Bravo! Single/twin/triple applications over 100 mph for gas engines up to 600 hp



The Bravo One drive delivers superior performance with best-in-class shifting. Its exclusive performance torpedo design and dual water pickups allow for speeds topping the century mark, with exceptional handling at high and low speeds. A trim-limit switch sets your drive angle for maximum performance every time, and a greaseable drive coupler allows for quick and easy service without removing the drive unit.

Bravo Three/Bravo Three X/ Bravo Three XR

Efficient. Maneuverable. Unbeatable. Single/twin applications up to 65 mph for gas engines up to 525 hp



The twin-prop design says it all. Whether in a single-unit or twin-unit application, the Bravo Three is an efficient drive built without compromise. Perhaps it’s the best-in-class shifting or its counter-rotating propeller design—enabling agile handling in reverse for precision maneuverability. And the greaseable gimbal bearing makes for an easy ownership experience—allowing for service without removing the drive unit. The Bravo Three X drive, standard on big block 8.2L high-output engines, is a super-strength drive with high performance attributes.



The Sterndrive Advantage

Mercury Marine changed the game of boating power when it released its first MerCruiser sterndrive a half century ago. Over the years, a commitment to innovation has placed the MerCruiser name among the great pioneers in the industry, always pushing forward by integrating Mercury technological breakthroughs such as SeaCore corrosion protection and Axis joystick control with its sterndrive systems.

Recently, jet drives have emerged as a trendy alternative, as some companies have applied engine technologies

native to personal watercraft to larger runabouts. When it come to trends, some become legitimate movements, but most go the way of ant farms and pet rocks. When matched up against legendary MerCruiser sterndrives, it would certainly seem jets fall closer to that latter grouping. From MerCruiser's 3.0L plants on up to its big blocks, nothing can compare to the lineup's proven sterndrive technology, reliability and durability, breadth and depth of choices, and expert global dealer network that backs it all up. The choice is easy.



STERNDRIVE VS. JET

MerCruiser sterndrives hold a number of performance, comfort and safety advantages over jet engines

- The hull shape of jet boats makes them difficult to handle in bad weather; sterndrives cut through chop and keep you on course
- Sterndrives are superior for tow sports, offering a better wake shape, more confident steering and more stable speeds
- Recent comparisons showed that a jet-powered runabout ran twice as loud as a comparable sterndrive-powered boat at 30 mph
- In shallow water, a jet can suck up weeds, sand and foreign objects, requiring additional service; sterndrives perform better in shallow water and are easier to clean
- MerCruiser sterndrives are made specifically for boating purposes; jet engines originated for use with personal watercraft and don't have the same boating pedigree
- MerCruiser sterndrives boast SeaCore corrosion protection for incomparable durability over the long haul



To see video of how MerCruiser sterndrives are superior to jet drives, scan this QR code with your smartphone. If your phone doesn't have the app, go to www.i-nigma.mobi. You can also see these videos at www.mercurymarine.com/engines/mercruiser/video/.



Built to Last

MerCruiser sterndrives have been built from the start exclusively for boating applications. The same can't be said for jet engines, which were first engineered for use with personal watercraft. Jet engines haven't historically been held to the same high standards for corrosion protection as sterndrives, since, unlike boats, personal watercraft aren't built to sit in water for extended periods of times. Any marine growth or befouling can significantly impact the performance of a jet, while MerCruiser sterndrives are specifically built to handle the rigors of the marine environment. It's simple, really: Jets can't hold a candle to sterndrives when it comes to longevity and proven reliability in boating applications.



Greener Pastures

In head-to-head comparisons, sterndrive-powered runabouts performed more efficiently at cruising and low speeds than equivalent jet-equipped boats. Better fuel efficiency equals less money spent at the pump for the boater who chooses a sterndrive. But MerCruiser sterndrives take the advantage to the next level with the SmartCraft ECO-Screen. For superior fuel efficiency, pair your MerCruiser sterndrive with the ECO-Screen, an innovative dashboard feature that runs engine diagnostics and—on an easy-to-read, multicolor screen—tells you exactly what you need to do to obtain optimal fuel economy.



Thrust of the Matter

Jet boats steer with directional thrust. Once the jet stream is reduced, the ability to steer is reduced. And once the jet stream is turned off, the ability to steer is gone. Imagine that happening while you're trying to dock or when cruising! Sterndrive boats deliver consistent steering due to the thrust of the propeller and the direction of the drive. Don't ruin a perfectly fine day of boating by losing your cool (and control) at the dock.

MerCruiser Specifications

Engine	STERNDRIVES				
	3.0 MPI ECT	4.3 MPI ECT	5.0 MPI ECT	350 MAG ECT	377 MAG ECT
HP/kW	135/99.3	220/162	260/191	300/221	320/235
Max RPM (WOT)	4400-4800	4400-4800	4600-5000	4800-5200	4800-5200
Cylinders	4 (In-line)	V-6	V-8	V-8	V-8
Displacement (CID/L)	181/3.0	262/4.3	305/5.0	350/5.7	377/6.2
Fuel Injection System	Multi-point Electronic Fuel Injection (MPI)	Multi-point Electronic Fuel Injection (MPI)	Multi-point Electronic Fuel Injection (MPI)	Multi-point Electronic Fuel Injection (MPI)	Multi-point Electronic Fuel Injection (MPI)
Fuel/Ethanol Tolerance	87 Octane/up to 10% ethanol	87 Octane/up to 10% ethanol	87 Octane/up to 10% ethanol	87 Octane/up to 10% ethanol	87 Octane/up to 10% ethanol
Engine Guardian System	Overheating, low voltage, over-rev control, low drive lube	Low oil pressure, high coolant temperature, low sea water pressure, low voltage, over-rev control, low drive lube	Low oil pressure, high coolant temperature, low sea water pressure, low voltage, over-rev control, knock control	Low oil pressure, high coolant temperature, low sea water pressure, low voltage, over-rev control, knock control	Low oil pressure, high coolant temperature, low sea water pressure, low voltage, over-rev control, knock control
Cooling System	Optional freshwater cooling	Optional freshwater cooling; standard on SeaCore model	Optional freshwater cooling; standard on SeaCore model	Optional freshwater cooling; standard on SeaCore model	Freshwater cooling standard on SeaCore model
Digital Throttle & Shift	N/A	N/A	Optional	Optional	Optional
Available Drives	Alpha One	Alpha One Bravo One Bravo Two Bravo Three	Alpha One Bravo One Bravo Two Bravo Three	Alpha One Bravo One Bravo Two Bravo Three	Bravo One Bravo Two Bravo Three

SmartCraft: More Boating, Less Work

That's been the goal of the Mercury SmartCraft team from day one—to make boating more enjoyable through the use of boater-friendly technologies. SmartCraft technology enables engine components to gather and share information with each other and you, integrating this digital information to make monitoring your vessel, its engine and external conditions an easy, intuitive process. The following SmartCraft options help accomplish our goal: maximizing the enjoyment you get on the water.



DTS - ShadowMode

With Mercury's Shadow technology, there's no more grappling with multiple engine levers. Instead, you have just two levers controlling multiple engines. Operation is simple, smooth and intuitive.

And for the first time, it allows for both triple and quad engines and dual helm installations. Just what you'd expect from Mercury Marine, the world's leader in marine technology.



MercMonitor

This digital-vessel monitoring system allows you to select three pieces of data—such as rpm, speed, depth, gallons per hour—and customize your gauge readout based on the vessel data most important to your operation. Customize up to five of

these tri-data screens so you can adjust effortlessly to meet your changing needs. The data is displayed on an easy-to-read, multicolor LED screen, with seven color choices to help you easily organize your customized readouts.

INBOARDS

8.2 MAG ECT	8.2 MAG HO ECT	5.7 Horizon DTS ECT*	6.2 Horizon DTS ECT*	8.2 Horizon (375hp) DTS ECT	8.2 H.O. (425hp) DTS ECT
380/283	430/321	300/224	320/239	375/280	425/317
4400-4800	4600-5000	4600-5000	4600-5000	4200-4600	4400 - 4800
V-8	V-8	V-8	V-8	V-8	V-8
502/8.2	502/8.2	350/5.7	377/6.2	502/8.2	502/8.2
Multi-point Electronic Fuel Injection (MPI)	Multi-point Electronic Fuel Injection (MPI)	Multi-point Electronic Fuel Injection (MPI)	Multi-point Electronic Fuel Injection (MPI)	Multi-point Electronic Fuel Injection (MPI)	Multi-point Electronic Fuel Injection (MPI)
87 Octane/up to 10% ethanol	87 Octane/up to 10% ethanol	87 Octane/up to 10% ethanol	87 Octane/up to 10% ethanol	87 Octane/up to 10% ethanol	87 Octane/up to 10% ethanol
Low oil pressure, high coolant temperature, low sea water pressure, low voltage, over-rev control, knock control, high exhaust manifold temperature, low drive lube	Low oil pressure, high coolant temperature, low sea water pressure, low voltage, over-rev control, knock control, high exhaust manifold temperature, low drive lube	Low oil pressure, high coolant temperature, low sea water pressure, low voltage, over-rev control, knock control	Low oil pressure, high coolant temperature, low sea water pressure, low voltage, over-rev control, knock control, transmission temperature	Low oil pressure, high coolant temperature, low sea water pressure, low voltage, over-rev control, knock control, high exhaust manifold temperature, low drive lube	Low oil pressure, high coolant temperature, low sea water pressure, low voltage, over-rev control, knock control, high exhaust manifold temperature, low drive lube
Standard full closed cooling	Standard full closed cooling	Closed cooling	Closed cooling	Standard full closed cooling	Standard full closed cooling
Optional	Optional	Standard	Standard	Standard	Standard
Bravo One X	Bravo One X	ZF 63A Down Angle	ZF 63A Down Angle	ZF 63A Down Angle	ZF 63A Down Angle
Bravo Two X	Bravo Two X	ZF 63IV V-Drive	ZF 63IV V-Drive	ZF 63IV V-Drive	ZF 63IV V-Drive
Bravo Three X	Bravo Three X				
Bravo One XR	Bravo One XR				
Bravo Three XR	Bravo Three XR				

*Horizon Package Extras: Standard closed cooling with 5-year coolant for longer engine life; convenient single-point water drain system for simple maintenance and extended boating seasons.



ECO-Screen

ECO-Screen is a cutting-edge system monitoring feature of the SmartCraft MercMonitor that tells you what you need to do to obtain the best fuel economy for your application. It does this by constantly monitoring engine rpm, boat speed, fuel consumption and engine trim to automatically cal-

culate and guide you to your best fuel economy settings. The ECO feature automatically runs in the background, is easy to read and understand, and uses a multicolor screen that turns green to show you, at a glance, when you've optimized fuel economy.



SmartTow

SmartTow, the latest SmartCraft advancement in tow sport technology, combines an rpm-based cruise control for consistent speed with Mercury's exclusive Launch Control, which determines the intensity you want out of the water. Forget about the daunting challenge of manually maintaining

speed or attempting to estimate the weight of your boat plus crew; simply select from five Launch Control profiles for pull intensity, enter your rpm endpoint, and SmartTow takes care of the rest.

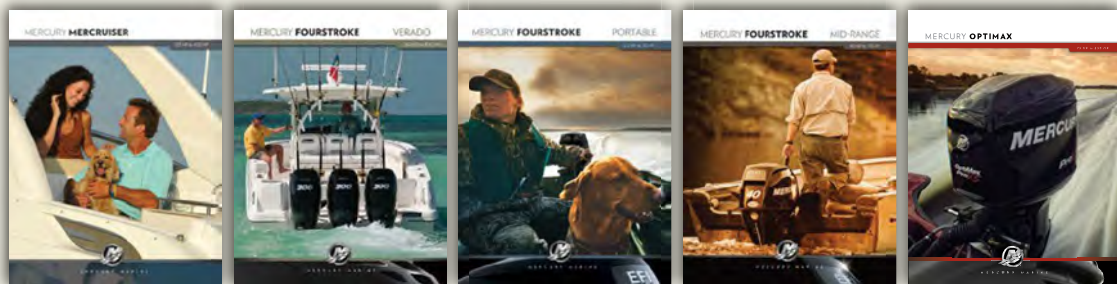


Visit www.mercurymarine.com for more information, or to purchase these items, go to www.mercurypartsexpress.com or visit your local Mercury dealer.



FOR MORE INFORMATION ABOUT MERCURY POWER

including the full lineup of engines, propellers, parts and accessories, visit the ultimate resource for all things Mercury at www.mercurymarine.com. You'll also find special promotions, Mercury news, service and support information, side-by-side comparison charts, photos, videos and much more to help you achieve maximum engine performance and an unbeatable driving experience on the water.



135 hp - 430 hp
90-8M0054843

150 hp - 350 hp
90-8M0054839

2.5 hp - 30 hp
90-8M0054841

40 hp - 115 hp
90-8M0054842

75 hp - 250 hp
90-8M0054840

DIVE IN AT WWW.MERCURYMARINE.COM

© 2011 MERCURY MARINE. All rights reserved. Reproduction in whole or in part without permission is prohibited.
All trademarks belong to Brunswick Corporation.