



88

88

88

88

88

**EVENTS**



TAPE LONDON



3,750 sq. feet  
A capacity of 300pax with a designated VIP area.

**FEATURES**

- Walk in photo booth with customised overlay LED screen
- Catwalk (12 squares)
- Large Performance stage
- Versatile seating
- Pop up bar

**AUDIO SPEC**

- Sound system:  
D&B Audiotechnik loudspeaker system including 3 x 24S speakers
- 6 x 10S speakers
- 2 x B22 sub woofers
- 2 x Vi sub woofers
- 2 x Yi subwoofers
- All powered by D80 amplifiers

**DJ EQUIPMENT:**

- Pioneer DJM Nexus-900NXS2 mixer with 2 x CDJ-900NXS
- Mixing / Monitoring:  
Digico S21 live mixing console 4 x d&b Max 2 monitors
- Microphones:  
2 x Shure Beta SM58 wireless 3 x Shure SM57  
4 x Shure SM58  
1 x Shure BETA 52A  
1 x Shure BETA 91A  
2 x Sennheiser e906  
1 x Sennheiser e904  
1 x Telefunken AK47 MKII



# TAPE MEMBERS



MEMBERS



100 capacity  
exclusive space  
with private side  
entrance



## FEATURES

X2 video screens  
Intimate performance stage

## Sound system

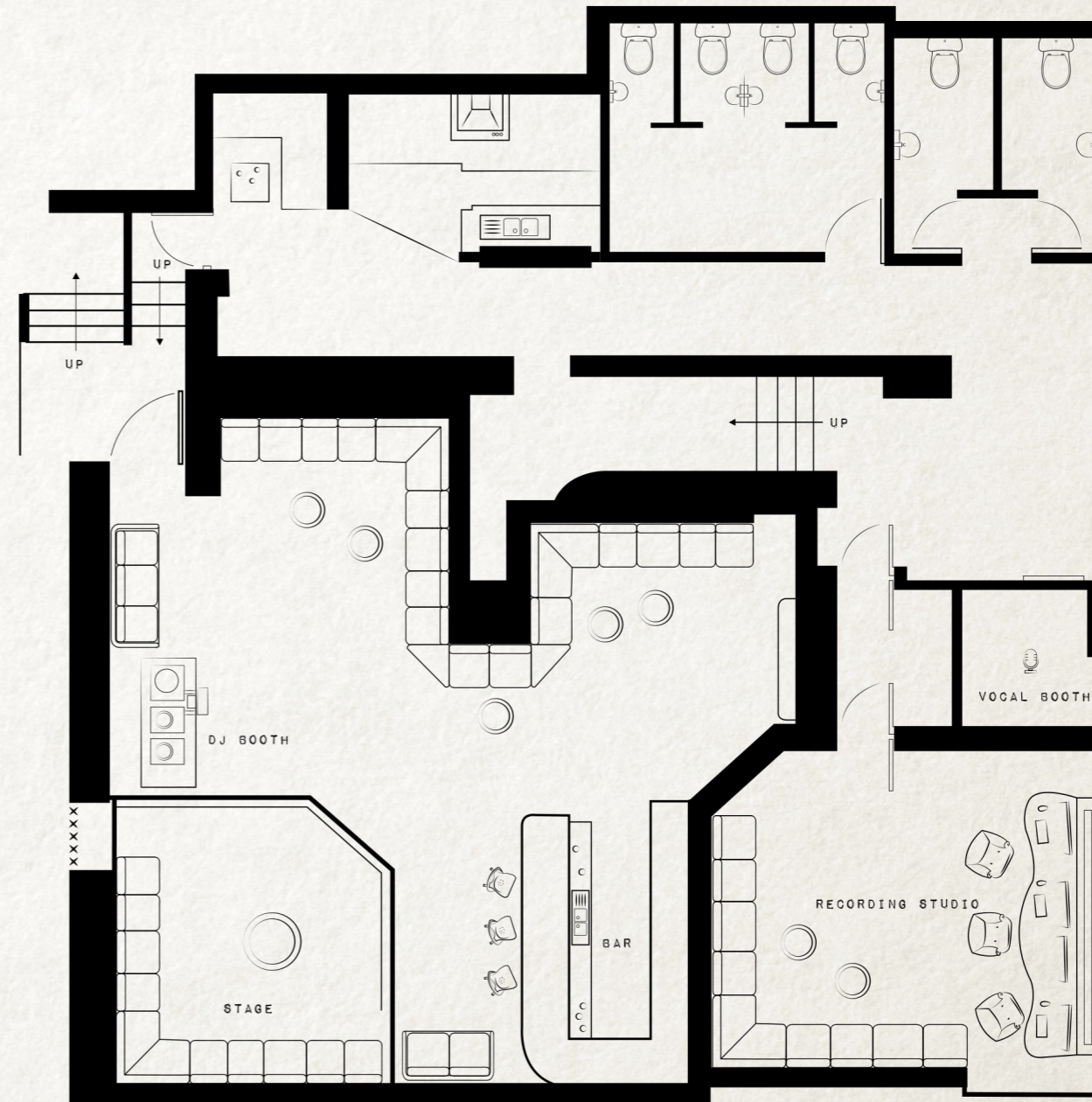
A state of the art audio system  
utilising the world's best  
speakers.

World class PMC BB6 studio  
monitoring system with XBD  
subwoofers, the only club in the  
world with this system.



## DJ equipment

Pioneer DJM Nexus-900  
mixer with 2X CDJ-900  
Mixing / Monitoring  
Digico S21 live mixing  
console D&B Max  
monitors





## TAPE RECORDING STUDIO

## T A P E S T U D I O

The only studio in the UK to proudly own a PMC QB1 XBD studio monitoring speaker system. Avid HDX running Pro Tools, Logic X and Ableton Live through an Avid HD I/O. UAD Apollo 16 interface Telefunken AK47 microphone with Great River mic pre various outboard equipment.

Multiple audio lines to the main club and tape members





# THE LODGE



## PRIVATE LOCATION

This extraordinary property based in Battersea is available to use in conjunction with events at Tape London.

Its modern elements are highlighted in an abundance of natural daylight. The stunning accommodation provides the perfect setting for corporate away-days, private dinner parties, workshops, masterclasses and screenings.

The spacious dining area has a modern kitchen table to fit 20 guests and a large garden with gas heaters. Extra elements include:

*Music Pre Production Room, ping-pong table, foosball table, pool table and popcorn machine.*

