


*clever – creative – sustainable – relevant*



**utz** RAKO



## RAKO – a versatile performer

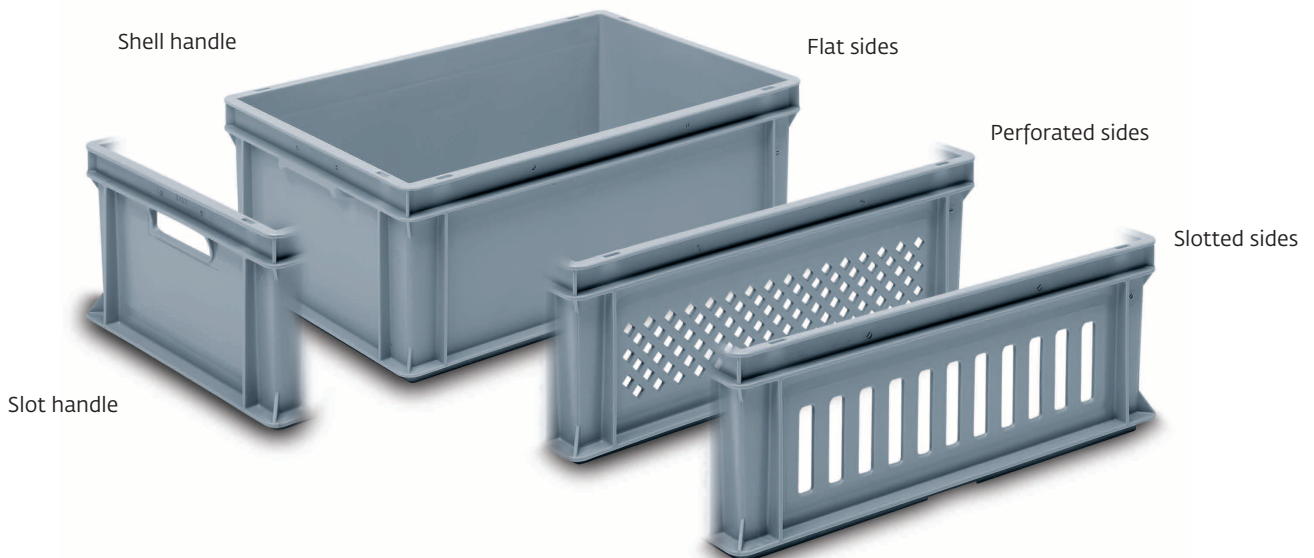
The RAKO basic container is a universal container with design flexibility. It allows for a wide number of design variations ranging from base options to different types of handles and sides. All RAKO containers are available in ESD material. 



## RAKO shipping data

Part Number	Description	#/layer	#/pallet 1200 x 800	#/truck 53' trailer
3-237	200 x 150 x 120 mm	32	640	16640
3-206	300 x 200 x 120 mm	16	288	7488
3-210	300 x 200 x 220 mm	16	160	4160

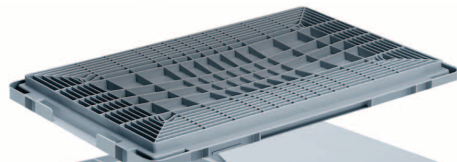
Part Number	Description	#/layer	#/pallet 1200 x 1000	#/truck 53' trailer
3-203	400 x 300 x 120 mm	10	200	5200
3-204	400 x 300 x 220 mm	10	100	2600
3-228	600 x 400 x 100 mm	5	100	2600
3-200	600 x 400 x 120 mm	5	100	2600
3-201	600 x 400 x 220 mm	5	50	1300
3-202	600 x 400 x 325 mm	5	35	910



Flat base



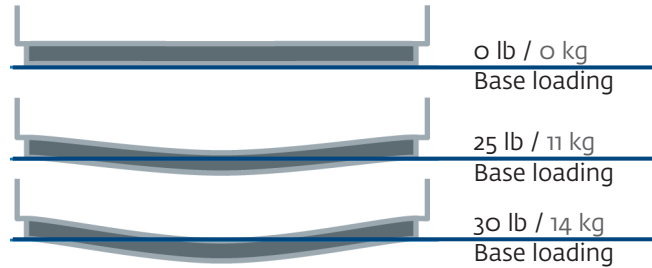
Heavy duty base



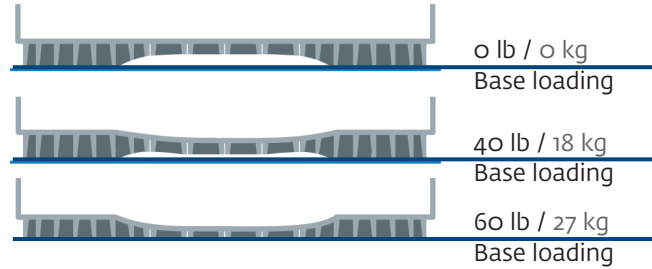
Enclosed double base



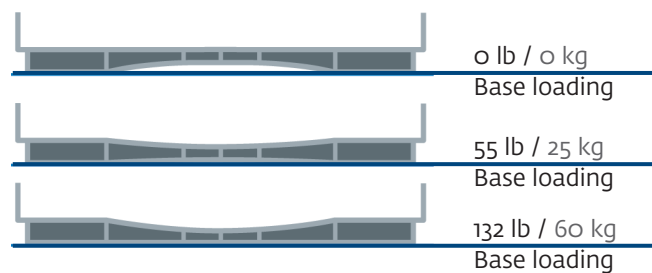
*Flat base*



*Heavy duty base*



*Enclosed double base*



*Typical base deflection — these do not affect the capacity of containers; it only shows the deflection of the bottom.*



**200 x 150 x 120 mm**  
8 x 6 x 4.7 in

Inner dimension: 162 x 112 x 97 mm / 6.4 x 4.4 x 3.8 in

Base: flat

Weight: 0.2 kg / 0.4 lb

Capacity: 2 liters / 0.07 ft<sup>3</sup>

Part number	Walls	Handles	Usable height	
			w/o lid	w/ lid
3-237-0	solid	2 shell handles	97 mm 3.8 in	112 mm 4.4 in



**300 x 200 x 120 mm**  
12 x 8 x 4.7 in

Inner dimension: 258 x 160 x 97 mm / 10.2 x 6.3 x 3.8 in

Base: flat

Weight: 0.5 kg / 1.1 lb

Capacity: 5 liters / 0.17 ft<sup>3</sup>

Part number	Walls	Handles	Usable height	
			w/o lid	w/ lid
3-206-0	solid	2 shell handles	97 mm 3.8 in	112 mm 4.4 in



### 300 x 200 x 220 mm

12 x 8 x 8.7 in

Inner dimension: 258 x 160 x 203 mm / 10.2 x 6.3 x 8.0 in

Base: flat

Weight: 0.7 kg / 1.5 lb

Capacity: 9 liters / 0.32 ft<sup>3</sup>

Part number	Walls	Handles	Usable height w/o lid	w/ lid
3-210-0	solid	2 shell handles	203 mm 8.0 in	218 mm 8.6 in



### 400 x 300 x 120 mm

16 x 12 x 4.7 in

Inner dimension: 358 x 258 x 100 mm / 14.1 x 10.2 x 3.9 in

Base: flat

Weight: 0.9 kg / 2.0 lb

Capacity: 10 liters / 0.35 ft<sup>3</sup>

Part number	Walls	Handles	Usable height w/o lid	w/ lid
3-203-0	solid	2 shell handles	100 mm 3.9 in	114 mm 4.5 in
3-203-1	long sides perforated, short sides solid	2 shell handles	100 mm 3.9 in	114 mm 4.5 in
3-203-2	long sides slotted, short sides solid	2 shell handles	100 mm 3.9 in	114 mm 4.5 in



### 400 x 300 x 220 mm

16 x 12 x 8.7 in

Inner dimension: 358 x 258 x 203 mm / 14.1 x 10.2 x 8.0 in

Base: flat

Weight: 1.3 kg / 2.9 lb

Capacity: 20 liters / 0.71 ft<sup>3</sup>

Part number	Walls	Handles	Usable height w/o lid	w/ lid
3-204-0	solid	2 shell handles	203 mm 8.0 in	217 mm 8.5 in
3-304-0	solid	2 handle slots	203 mm 8.0 in	217 mm 8.5 in
3-204-1	perforated	2 shell handles	203 mm 8.0 in	217 mm 8.5 in
3-304-1	perforated	2 handle slots	203 mm 8.0 in	217 mm 8.5 in
3-204-2	slotted	2 shell handles	203 mm 8.0 in	217 mm 8.5 in
3-304-2	slotted	2 handle slots	203 mm 8.0 in	217 mm 8.5 in



### 600 x 400 x 100 mm

24 x 16 x 3.9 in

Inner dimension: 558 x 358 x 83 mm / 22.0 x 14.1 x 3.2 in

Base: flat

Weight: 1.3 kg / 2.9 lb

Capacity: 19 liters / 0.67 ft<sup>3</sup>

Part number	Walls	Handles	Usable height w/o lid	w/ lid
3-228-0	solid	2 shell handles	83 mm 3.2 in	97 mm 3.8 in
3-228-1	long sides perforated, short sides solid	2 shell handles	83 mm 3.2 in	97 mm 3.8 in
3-228-2	long sides slotted, short sides solid	2 shell handles	83 mm 3.2 in	97 mm 3.8 in



## 600 x 400 x 120 mm

24 x 16 x 4.7 in

Inner dimension: 558 x 358 x 100 mm / 22.0 x 14.1 x 3.9 in

Base: flat

Weight: 1.7 kg / 3.3 lb

Capacity: 20 liters / 0.71 ft<sup>3</sup>

Part number	Walls	Handles	Usable height	
			w/o lid	w/ lid
3-200-0	solid	2 shell handles	100 mm 3.9 in	114 mm 4.5 in
3-200-1	long sides perforated, short sides solid	2 shell handles	100 mm 3.9 in	114 mm 4.5 in
3-200-2	long sides slotted, short sides solid	2 shell handles	100 mm 3.9 in	114 mm 4.5 in



## 600 x 400 x 220 mm

24 x 16 x 8.7 in

Inner dimension: 558 x 358 x 203 mm / 22.0 x 14.1 x 8.0 in

Base: flat

Weight: 2.3 kg / 5.1 lb

Capacity: 40 liters / 1.42 ft<sup>3</sup>

Part number	Walls	Handles	Usable height	
			w/o lid	w/ lid
3-201-0	solid	2 shell handles	203 mm 8.0 in	217 mm 8.5 in
3-301-0	solid	2 handle slots	203 mm 8.0 in	217 mm 8.5 in
3-201-1	perforated	2 shell handles	203 mm 8.0 in	217 mm 8.5 in
3-301-1	perforated	2 handle slots	203 mm 8.0 in	217 mm 8.5 in
3-201-2	slotted	2 shell handles	203 mm 8.0 in	217 mm 8.5 in
3-301-2	slotted	2 handle slots	203 mm 8.0 in	217 mm 8.5 in



## 600 x 400 x 325 mm

24 x 16 x 12.8 in

Inner dimension: 558 x 358 x 305 mm / 22.0 x 14.1 x 12.0 in

Base: flat

Weight: 3.0 kg / 6.6 lb

Capacity: 60 liters / 2.12 ft<sup>3</sup>

Part number	Walls	Handles	Usable height	
			w/o lid	w/ lid
3-202-0	solid	2 shell handles	305 mm 12.0 in	319 mm 12.6 in
3-302-0	solid	2 handle slots	305 mm 12.0 in	319 mm 12.6 in
3-202-0	perforated	2 shell handles	305 mm 12.0 in	319 mm 12.6 in
3-302-0	perforated	2 handle slots	305 mm 12.0 in	319 mm 12.6 in
3-202-0	slotted	2 shell handles	305 mm 12.0 in	319 mm 12.6 in
3-302-0	slotted	2 handle slots	305 mm 12.0 in	319 mm 12.6 in



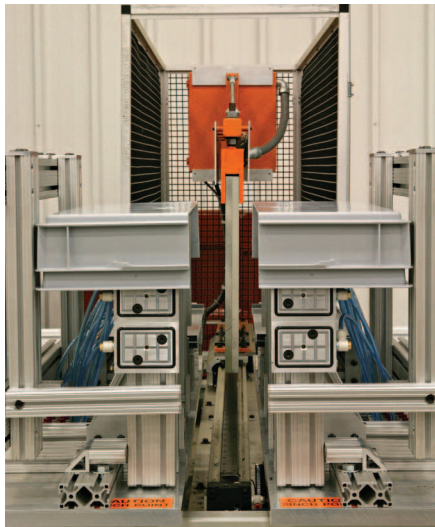
## Modified heights

The RAKO frame design allows the container to be cut to a shorter height dimension via a secondary operation.



## Special cut out options

Standard containers can be modified for special uses. Cut outs can be precisely made with our CNC milling machine.



## Cut and weld capabilities

Our cut and weld machine enables our customers the ability to create a nonstandard sized container for their specific product.

Cut and weld customized containers eliminate wasteful space while lowering costs in packing, shipping and storage.



## Stacking container with component tray insert

RAKO containers can be modified to accommodate component trays that are designed to our customers specific needs.



## Lids

Optional lids protect contents from dust and other foreign material. Lids are available in loose, hook-in and hinged options.



Snap lock



Hinge reinforcement



Galvanized clip



Hot stamping



Dividers

## Container accessories

All containers can be ordered with a variety of options:

- Snap-locks are designed for easy opening and closing. Security seals are also available to prevent tampering.
- Hinge reinforcements permanently secure the lid to the container.
- Galvanized clips and hot stamping are automation features for locating, lifting, identification and orientation.
- Dividers allow for products to be safe and secure while in transport.

## Special order colors

A variety of colors are available with a minimum order requirement.



Black



Lime green



Dark gray



Orange



Silver gray



Blue

[utzgroup.com](http://utzgroup.com)

Georg Utz, Inc.  
14000 N 250 W, Edinburgh, IN 46124  
Phone 812 526 2240 Fax 812 526 2428  
[info.us@utzgroup.com](mailto:info.us@utzgroup.com)

