

Roofing **W**arehouse

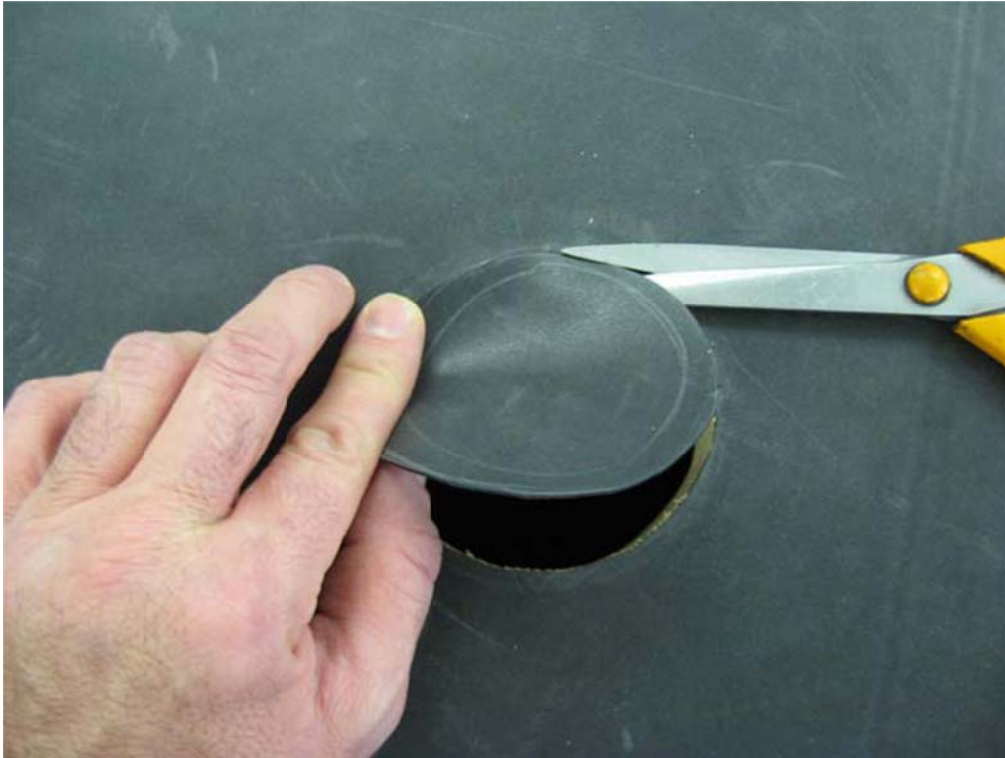
Internal Drain Install/Detail



Internal drain detail

We strongly recommend that you mitre your OSB or Ply decking around the Internal drain Inlet, before laying your EPDM to create a run for Rainwater.

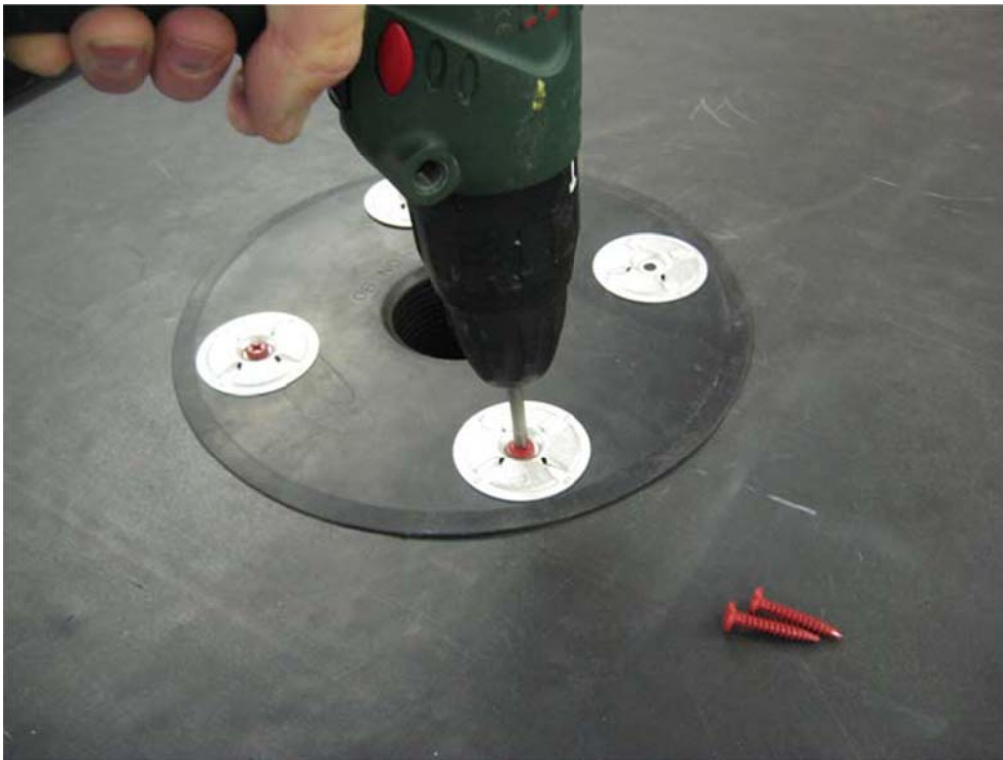
The EPDM membrane should be adhered to the substrate with yellow Bonding Adhesive within 300mm of the drain and the membrane cut away to reveal the drain hole.



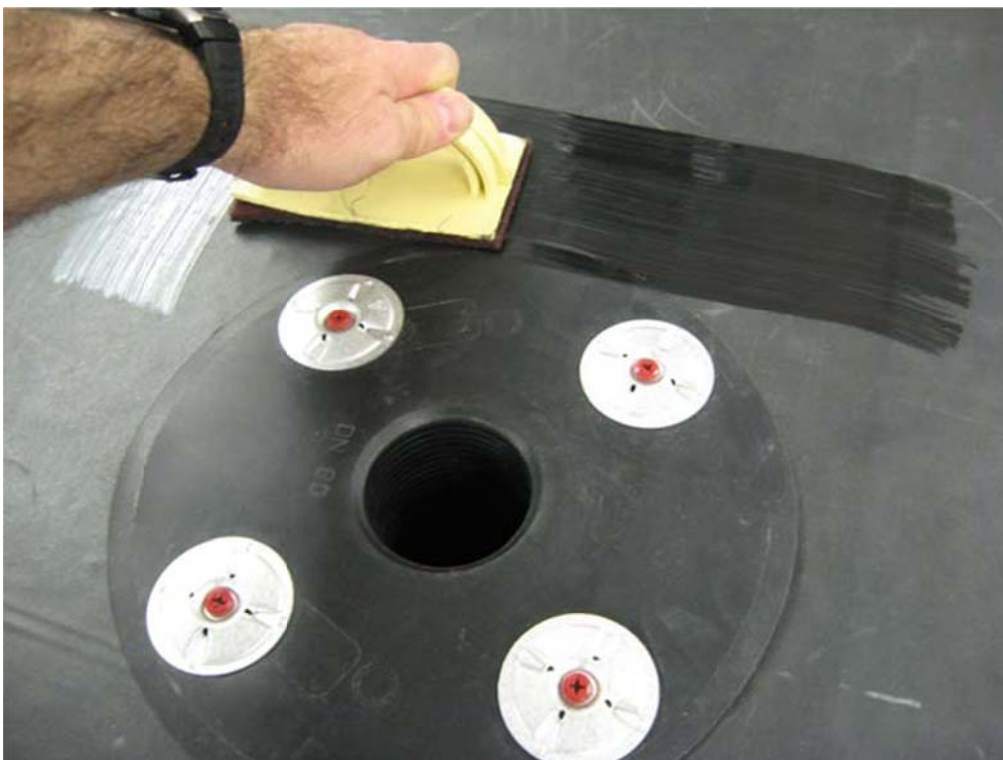
Insert the drain outlet...



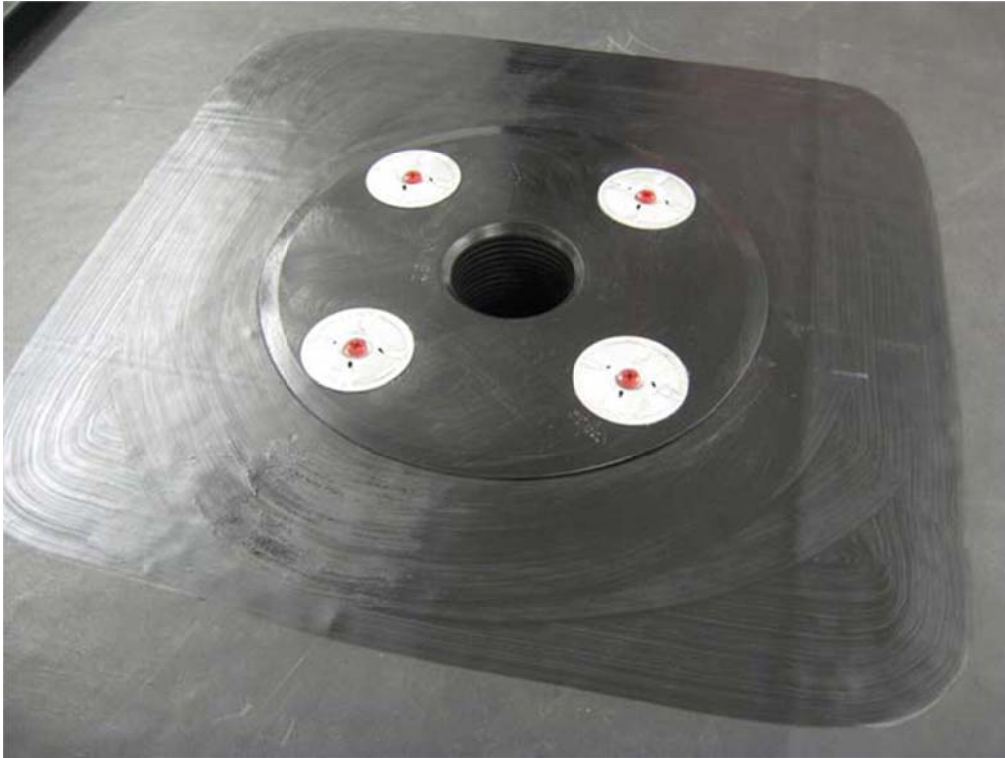
Mechanically fix the outlet to the roof deck using V-plates and All-purpose fasteners.



Apply QuickPrime plus to the area a minimum of 100mm beyond the perimeter of the flange.



Wait for the QuickPrime plus to become tacky.



Prepare a piece of SA flashing minimum 75mm larger than the drain outlet diameter and apply to the primed area.



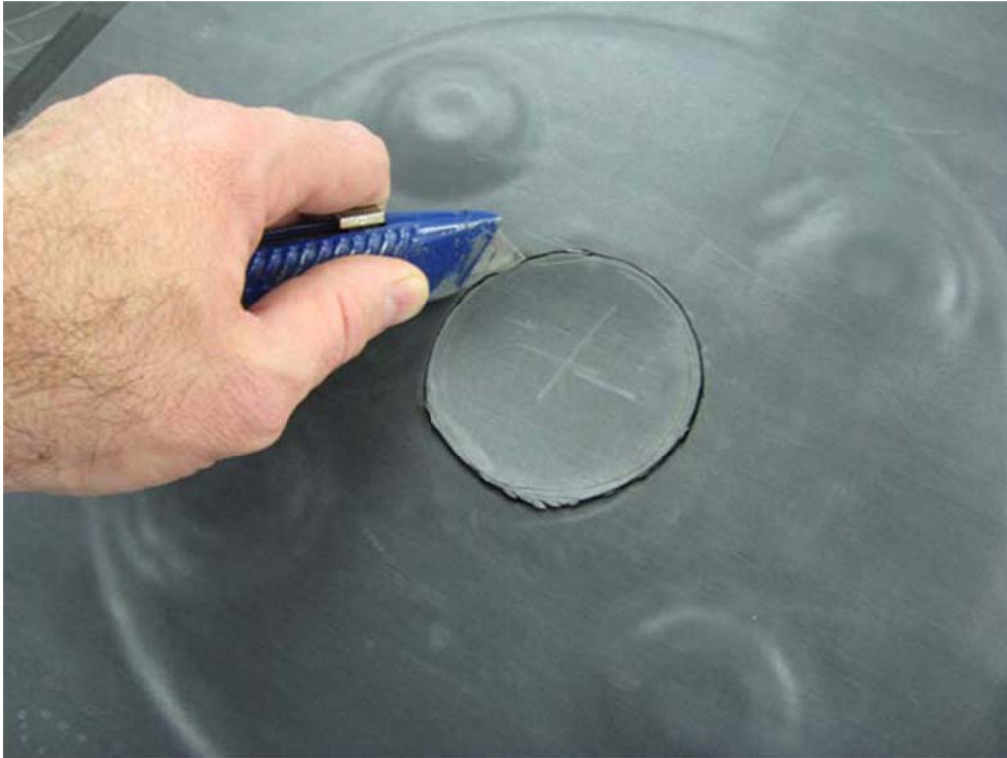
Apply the silicon roller for total adhesion.



Note that QuickPrime plus should be visible around the edge of the flashing.



Remove the SA flashing covering the outlet by cutting a hole around its diameter. Take care not to cut into the drain outlet itself.



The finished detail with leaf guard inserted.

