

Flood30-16K

Core
LIGHTING

Portable Battery 16,000lm Floodlight

High Power LED Rugged IP65

FLOOD30-16K is an extremely high-brightness, battery powered LED illumination unit, fully rated for outdoor use (IP65) with highly powered neutral white LEDs. Now with a massive 16,000 lumens equivalent to 1.5kW tungsten halogen the FLOOD30-16K is designed for instant illumination anywhere. It can be powered or charged from mains, all in a compact 25cm cube rugged case. The head folds flat with lens protection and strap option for carrying; the head may be used on the base unit or off the unit on tripod or other accessories. Designed and manufactured in the UK.



Compact size with tilting/closing head

Key Features

- Extends working times at riding schools, paddocks & yards
- Overcomes planning requirements (for permanent lighting installations)
- Overcomes the need for mains power installation
- Long life 2¾ to 30 hours, depending on setting. Larger battery available
- Also works from AC Mains operation if desired*
- Flexible – attach head to portable 3.5m [12ft] tripod (included); OR attach to fence, pole, horse box, stable roof etc.
- Ultra-high brightness & efficient: 2 to 4 units lights an arena 45m x 25m
- No trailing mains connection wires for a safer environment
- Cooler running makes it safe to touch. Use indoors too – stables etc.

*Settings up to 80% of max brightness with larger battery



Removable Head. Attach to tripod or accessory

Portability & Simplicity

Simply plug in to charge, unplug once finished (up to 10 hours) then switch on. Or charge from vehicle power adaptor accessory also available.

A selector switch controls intensity. The wide-angle diffuser lens is designed to ensure all the light is concentrated into the target area, not wasted into the sky and ground.

Raise height up to 3.5m (12ft) on tripod system. Extender cable system allows connection to other fixings, other tripod sizes or permanent structures.

Multiple uses for a single unit

- Riding in unlit arenas or training areas
- Lighting paddocks and individual jumps
- Loading/unloading horseboxes at night, esp. off-site
- Night-time emergency maintenance: fences, out-buildings, vehicles, equipment
- Temporary safety lighting (public access of shows etc)
- Night-time animal care
- Work-light for farriers, farmers, maintenance crew
- Deploy in field for ambient light during night riding



2 or 4 Units to light 45 x 25m arena – during rainfall

Light Head

- White LED Head – Neutral White for most pleasing illumination (4000K CCT). Highest quality Cree LEDs
- Intense output to over 16,000 lumens providing very high illumination at just 100W consumption
- Simple up/down intensity/lifespan selector & LED display showing light intensity or battery level meter
- Head tilts vertically from closed to 180° vertical for uplighting
 - ❖ minimal glare (falling outside of area) and minimal light wasted to the sky and the ground
- Connector into main body allows head to be mounted off the body onto tripods and other accessories
- Optional accessories available to mount head on wall, custom tripods, vehicles, horse boxes etc.
- Convection cooled – no fan minimising noise & maintenance. LED Lifespan >50,000 hours



Power Source

- Full charge time only 8-10 hours.
- 26Ah Lithium Ion for lower cost (Unit Total 7Kg plus tripod); 2 ½ hrs full brightness, adjustable up to 25hrs
- 52Ah Lithium Ion (8Kg) also available for longer runtime 5 ½ hrs to 50hrs
- Larger battery & charger option unit may operate from battery power or mains 80-240V with included larger charger supply, up to 80% max brightness
- Continuous battery operation on dropout of mains supply for backup lighting
- 12-24V vehicle charger available as an optional accessory
- Operating temperature -20 to +50 deg C.

Mechanical & Accessories

- IP65 (Totally protected from dust & low pressure jets of water)
- Rugged aluminium housing and head - powder coat painted
- Sturdy steel 3.5m tripod stable in winds with cable extensions (weight 6.5Kg)
- Optional wall plate head mount accessory for attaching to posts/barns etc
- Lock and/or chain through handles for security (not supplied).
- Base & head unit dims 250w x 255d x 230h. Weight 7-8Kg.

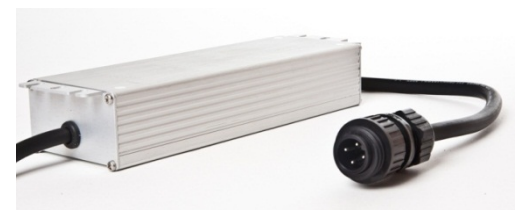


Compact 25cm cube;
head stows on top of
unit for protection
making this a rugged
package during storage
and transport



Optional carry strap
transforms the unit into a
portable worklight

Power and charging
accessories from
12Vdc for vehicle
charging to
110/240Vac mains
supply /charging



Remove head from base & mount
onto tripod, scaffolding pole,
fencepost etc