

### High Speed Indexing Device

The sector-gear intermittent mechanism has a large transfer torque, high positioning accuracy and excellent durability, making high-speed operation possible and long operating life of the machine. This intermittent mechanism has an inbuilt torque limiter that stops the gripper bars immediately and disengage the electromagnetic clutch on the main motor when an overload occurs.



High Speed Indexing Device

Gripper bars and chains



### Gripper Bars and Chains

The grippers are made of special extra hard aluminum alloy, with anode treatment on the surface, ensuring accurate die cutting and embossing, etc. at high speed. The adjustment mechanism, patent design (patent No. ZL01267630.6) guarantees very accurate control. An imported chain is used for the main gripper transmission, with strength increased by 45% for accurate stability and prolonged life.



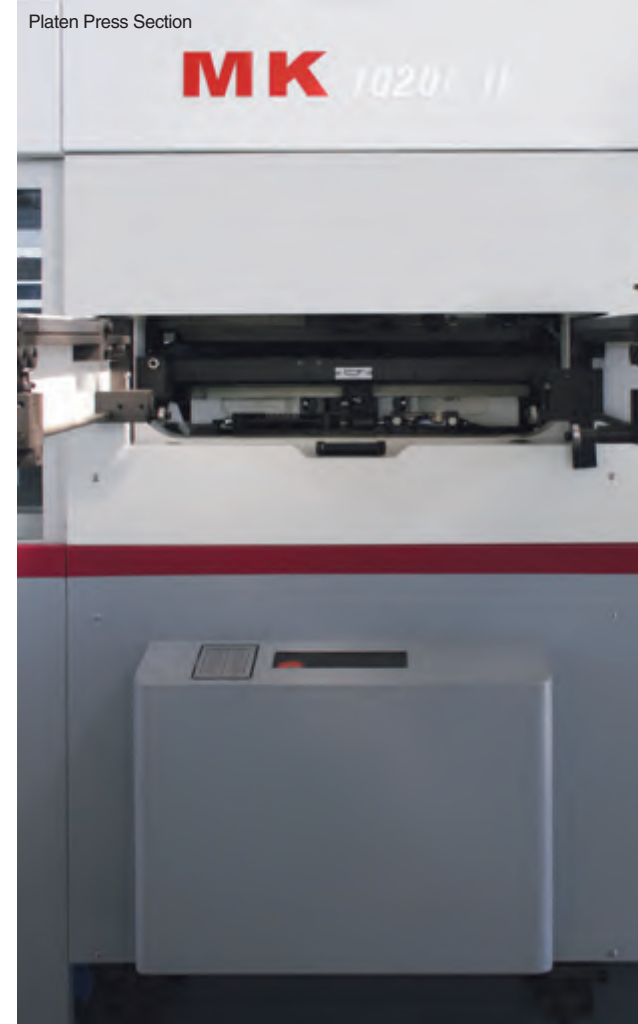
### Sheet Feed Section

The high-speed feeder is made of lightweight aluminum alloy with anode treatment on the surface. The forward, backward, high and low positions can be adjusted according to the stock: for smooth feeding of thin paper, large gram cardboard, corrugated paper, etc. 3 safety devices prevent the feeder from crashing. Left-right manual fine adjustment device is used for paper pile lateral movement. The powerful feeder is equipped with 4 lifting suction cups and 5 forward motionsuction cups; the directions of the suction cups are adjustable according to the paper deformation. Air blowers on both sides of the pile achieve excellent sheet separation which creates a smooth feeding operation.

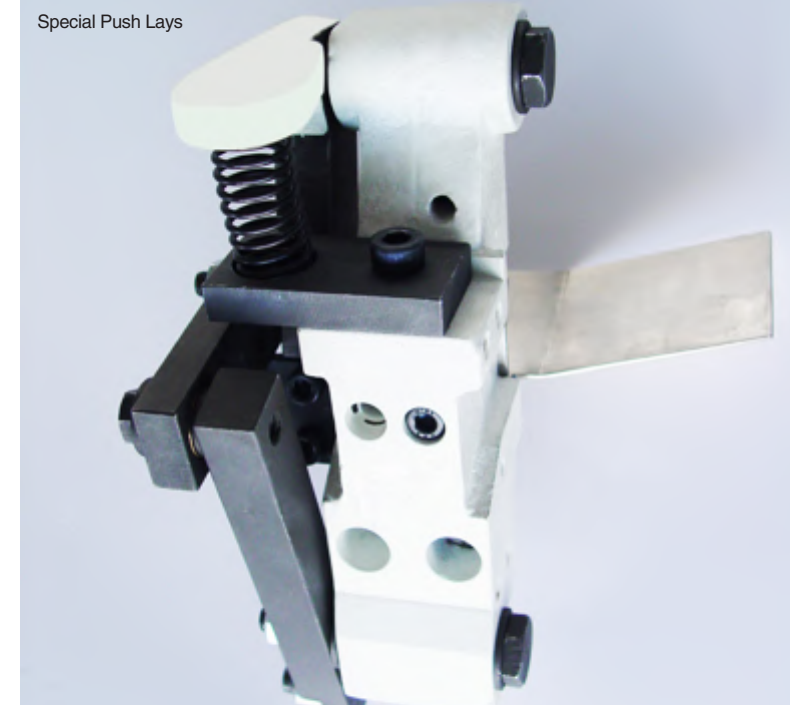
A timing belt is used for the feedertable which improves presentation to the front and side lays. The slow-down device is useful when feeding thin paper. Sheet detectors and control systems reduce paper waste.



Sheet Feed Section



Platen Press Section



Special Push Lays

### Platen Press Section

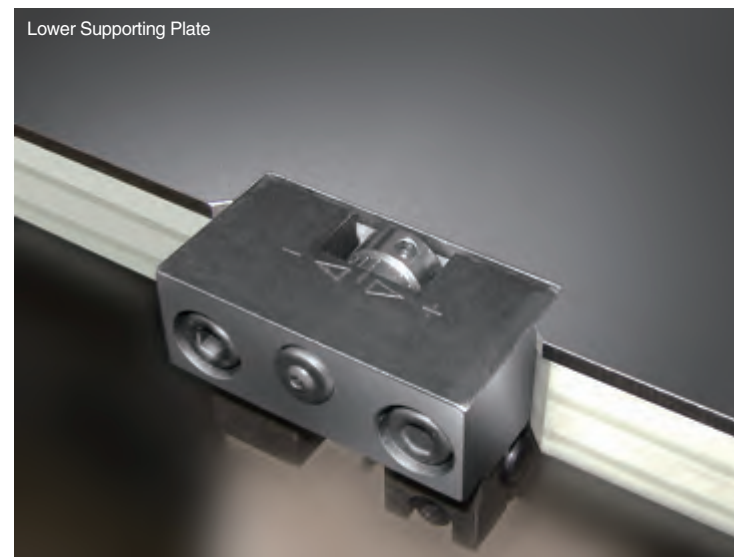
The worm gear and worm set products are imported from Taiwan whilst the crankshaft is manufactured in our own machining center. The key transmission parts provide our customer with reliability and durability. The platen walls and base are made of ductile iron in line with British Meehanite casting standard. The movable platen is made of special casting structure, with reliable strength to tolerate the operating pressure. The precision machining procedures ensure the platen's flatness and balance, this can shorten pressure adjustment time. The plate position detector ensures correct position and the pneumatic locking device eliminates the need for tools.



**Unconventional Brand-new Design and Remarkable New Efficiency**

**MK1020II/EII**  
Automatic Platen Die Cutting Machine / Die Cutting Machine with Stripping

- Platen
- Sheet-Fed
- Die Cutting
- Stripping



Lower Supporting Plate

### Lower Supporting Plate

The lower plate is made with high-quality imported materials. The 3mm+1mm steel plates improve foiling and embossing make-ready times. The 1mm plate concept is ideal for repeat jobs and increase profitability. The lower plate is equipped with a fine adjustment and central registration system which reduces plate changing and positioning dramatically.

### Stripping Section

The high quality transmission mechanism and cam movement curve provide stripping stability and accuracy. The central registration system used for the stripping boards provides accurate positioning and easy adjustment. The pneumatic raising device for upper stripping boards creates more internal working space. The stripping system is equipped with a quick lock system for user friendly operation and quicker stripping board positioning.



Overload Protector

### Delivery Section

An adjustable air blow-down system and air curtain helps delivery of the sheets from the gripper bars resulting in accurate stacks of finished product. For the thin paper, a braking brush slows down sheets after they are released from the gripper bar. There is also a pneumatic sampling device in the delivery which allows the operator to check finished product without stopping the machine.

### Air Curtain in Delivery

The dual auxiliary blowing device creates an air cushion on the paper pile for smooth paper delivery. The air volume of both sides can be controlled independently.

### Overload protector

An imported pressure sensor is used for detecting side wall deformation. It gives a warning when the machine reaches its maximum pressure limit, this ensures machine safety.



Technical Data	MK1020II/EII
Max sheet size	1020mm x 720mm
Min sheet size	400mm x 350mm
Max die cutting size	1020mm x 705mm
Inner chase size	1074mm x 749mm
Gripper margin	9~17mm
Convertible Stock	90~2000g/m <sup>2</sup> paper 0.1~2mm paper ≤4mm corrugated
Die cutting accuracy	≤ ± 0.075mm
Overall dimension	MK1020EII: 5750 ( L ) x 5000 ( W:Platform included ) x 2110 ( H ) MK1020II: 4750 ( L ) x 5000 ( W:Platform included ) x 2110 ( H )
Max working force	250 ton
Max working speed	7500s/h ( die cutting )
Max feeder pile height	1400mm ( wooden pallet included )
Max delivery pile height	1150mm ( wooden pallet included )
Fast-lock frame device	Optional
Full load wattage	21.2KW
Air Supply	0.6~0.7Mpa, flow rate: ≥ 0.6m <sup>3</sup> /min
Net weight	About 15 tons

To configure	● Standard configuration	○ Optional configuration
The high-speed feeder is adjusted with 4 lifting suction cups and 5 carrier suction cups	●	
Non-stop sheet feed system with high speed	●	
Non-stop sheet delivery system	●	
Single-position engagement clutch with high-performance	●	
Conveyor belt wide in width	—	
Vacuum feeding system	—	
Pneumatic side lay	—	
Imported torque restrainer	●	
Imported worm wheel and worm set products	●	
Pneumatic locking device	●	
Bi-directional pneumatic locking device	●	
3+1mm adjustable lower supporting plate	●	
Imported pneumatic clutch	●	
Heating system in 4 temperature zones	—	
Central registration system	●	
Pneumatic lifting and locking device of upper stripping frame at stripping unit	●	
Stripping quick lock device	○	
Stripping quick fine adjustment device	—	
Imported high speed indexing device	—	
Imported segment gear indexing system	●	
Open gripper with rotation type	●	
Patent design gripper bar	●	
Automatic lubricating system	●	
CE certification	●	
Overload protector	●	
Mitsubishi PLC Q series	—	
Mitsubishi PLC FX series	●	
Stands honeycomb chase	○	
Standard die-cutting chase	●	
Chase quick locking device	○	
Gripper margin removal device	○	
Chase preparation stand	○	
Stripping preparation stand	○	
Pre-stacking device	○	
Pre-loading device	○	
Pre-stacking device	●	

Brochure content is only for reference, the machines please refer to the actual products.



Masterwork Machinery Co., Ltd was established in 1995. It is specifically established as a high technology manufacturer of print finishing equipment. On March 29th, 2012, Masterwork Machinery Co., Ltd has successfully listed on the stock exchange in Shenzhen, which lays a solid foundation for the company's further development.

At present, Masterwork Machinery Co., Ltd can be found in over 20 countries. The company has continuously given full play to the advantages in resource, technology and talents. It devotes itself to promoting the core business—manufacture of the printing & packaging equipment. The products have gained acceptance all over the world. Masterwork Machinery Co., Ltd has become one of the preferred suppliers for the solutions of the global print finishing equipment.

For one company and successful team, every step made is covered with sweat and smile. Hard forward and rain or shine is the promise made by MK, and its belief for the future. The past excellent performance has laid a solid foundation for MK's sustainable growth. MK hopes to achieve the bright future by the close co-operation with the business partner.

<b>USA</b> Masterwork USA Inc Address: PO Box 625, Budd lake, NJ 07828 Tel: 973-691-8321 Fax: 888-467-2293 www.usa.com Email: sales@mkusa.com	<b>UK</b> Masterwork Graphic Equipment (UK) Ltd. Address: Unit 5B, Fox way, Trinity Business Park, Wakefield, West Yorkshire, WF28EE, United Kingdom. Tel: 0044-1924339995 Fax: 0044-1924382224 www.masterworkgraphics.co.uk
<b>Thailand</b> MKM(Thailand) Co., Ltd. Address: 269/2 Soi Chock Chai Jong Cham Roen Rama 3 Road, Bangpongngang, Yannawa, Bangkok 10120 Thailand Tel: 66-2-6823888 Fax: 66-2-6823969	<b>Japan</b> Masterwork Japan Co Ltd Address: Brain Plaza Bldg. 2F 1-2-16 Mita, Minato-Ku, Tokyo 108-0073 Japan Tel: 81-3-54433420 www.masterwork.jp
<b>Korea</b> Samwoo Co. Address: Rm 709, Uni-TechVil, 1141-2, Baiksuk-Dong, Ilsan Dong-Gu, Goyang-Si, Kyungki-Do, Republic of Korea Tel: 82-31-9054841 Fax: 82-31-9054844	<b>Russia</b> Terra Print Address: Elektrodnyi Proezd, 6, office 55, Moscow 111123 Tel/Fax: 7-495-3630078
<b>Turkey</b> Pasifik Ic ve Dis Ticaret ve Muresislik A.S. Address: 100. Yil Mah. Mas-Sit Matbaacilar Sitesi 3. Caddesi No: 199/B Bagcilar 34204 Istanbul - Turkey Tel: +90 212 432 7777 Fax: +90 212 432 7799 Email: pasifik@pasifiktrading.com.tr	<b>Peru</b> Linder Representaciones S.A. Address: Emilio Fernandez 161-202, Santa Beatriz Lima, Peru Tel: 511-3301111/3305643 Fax: 511-3321330
<b>Ukraine</b> Polygraphimport Ltd., Upp Address: 02105, Ukraine Kiev, 5 Tampere Str Tel: 38-44-5010646 Fax: 38-44-5010645/5590464	<b>Israel</b> Machinograph Ltd. Address: 5 Hasadan ST. Holon 58815 Israel Tel: 972-3-6543654 Fax: 972-3-6540242
<b>Singapore</b> Kmlink Pte Ltd Address: 1 Syed Alwi Road, #04-01 Song Lin Building, Singapore 207628 Tel: (65)63035433	<b>India</b> Manugraph India Ltd Address: Sidhwa House, N. A. Sawant Marg, Colaba, Mumbai - 400 005, Maharashtra, India. Tel. :+91 22 2287 4815 Fax. :+91 22 2287 0702 Email: packaging@manugraph.com
<b>Brazil</b> RGM Comercio Importação e Exportação de Máquinas Ltda Address: Av. dos Bandeirantes, 2649 04510-012 São Paulo - SP www.rgm-group.com.br	<b>Australia</b> Pressnet Pty Ltd Address: 7 Somersct Cr. Carina Heights, Brisbane 4152 Australia Ph: +61 7 3395 2233 Fax: +61 7 3395 2288 www.pressnet.com.au Email: pressnet@pressnet.com.au
<b>Guatemala Costa Rica El Salvador</b> Gevi S.A. Address: 4a Avenida "A" 22-47 Zona 14, Guatemala, 01014, Guatemala C.A. Tel: 502-23667648 www.grupogevisa.com	<b>Vietnam</b> Print & Pack Machinery Co., Ltd Address: 6th Floor-38 Ba Trieu Street, Hoan Kiem District/Hanoi, Vietnam Tel: 84-4-39363381 Email: hoangngocson@ppmc.com.vn



MASTERWORK MACHINERY CO., LTD.  
No.11 Shuangchen zhonglu,  
Beichen Science and Technology Area,  
Tianjin, 300400, China  
Tel: 86 22 26978899 (Direct line) 86 22 26976666 (Operator)  
Fax: 86 22 26973430  
Website: www.mkmchina.com



有恒·长荣  
Together & Better



**New Design, New Efficiency, New Ideas**  
**MK1020II/EII**  
Automatic Platen Die Cutting Machine / Die Cutting Machine with Stripping

天津长荣印刷设备股份有限公司  
MASTERWORK MACHINERY CO., LTD.



**High Speed, High Accuracy, High Stability,  
High Returns**

● Automatic Die-cutting Speed 8500 sheet/hour or Automatic Die-cutting and Stripping Speed 7500 sheet/hour, compared with the normal Die-cutters, there is a 1000 sheet increased productivity per hour. If 20 hours/day, and 300 days/year, improves the yield by 600 million sheet per year.