

**INCORPORATING ELECTRONIC AUDIBILITY SYSTEM  
COMPLETE WITH INDUCTION LOOP FACILITY**

**DIMENSIONS:**

STANDARD SIZE 615 x 723 x 255mm W X D X H

STRUCTURAL OPENING REQUIRED 630 x 270mm

DESIGNED TO FIT BELOW EXISTING OR WITHIN  
GLAZING

SUITABLE FOR EXTERNAL USE BUT A CANOPY IS  
STRONGLY RECOMMENDED

**SPECIFICATION:**

STANDALONE TRANSACTION DRAWER WITH  
BUILT IN ELECTRONIC AUDIBILITY SYSTEM  
COMPLETE WITH INDUCTION LOOP FACILITY

**STANDARD FINISH:**

BLACK ANTI GRAFFITI TEXTURED PPC FINISH  
WITH BRUSHED  
STAINLESS STEEL DRAWER INSERTS

**DRAWER:**

MAIN COMPARTMENT 230 x 580 x 200mm W x D x  
H, CLEAR ACCESS (WHEN OPEN) 230 x 430 x  
200mm W x D x H

SHALLOW COMPARTMENT 100 x 580 x 80mm W x D  
x H, CLEAR OPENING (WHEN OPEN) 100 x 430 x  
80mm W x D x H

FOR USE WHERE THE TRANSFER OF GOODS  
AND CASH CAN BE UTILISED TOGETHER, THE 80mm  
TRAY ALSO ALLOWS THE USE OF CREDIT/DEBIT  
CARD TERMINAL.

SUITABLE FOR PETROL STATION AND PHARMACY  
OUT OF HOURS TRANSACTIONS AND OTHER  
RETAIL OR TRADE OUT OF HOURS SALES WHERE  
COMMUNICATION IS REQUIRED.

**OPERATION:**

TRANSACTION DRAWER MANUALLY OPERATED,  
DRAWER ABLE TO BE LOCKED IN CLOSED POSITION  
BY INSERTING DROP IN LID.

AUDIBILITY SYSTEM, FULLY DUPLEX SYSTEM WITH  
INTERNAL DESK CONSOLE CONTROL UNIT AND  
INDUCTION LOOP FACILITY

**INSTALLATION:**

CAN BE INSTALLED IN WALLS/SHOPFRONTS UP  
TO 150mm THICK.

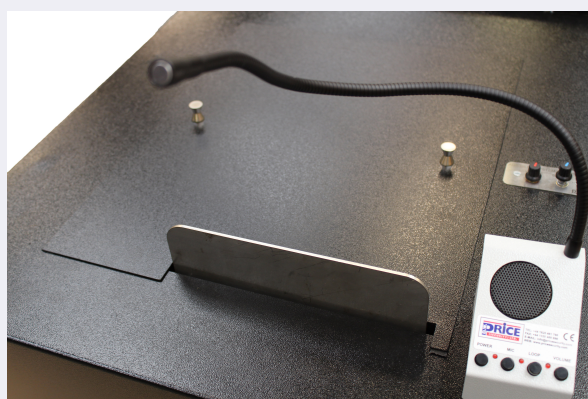
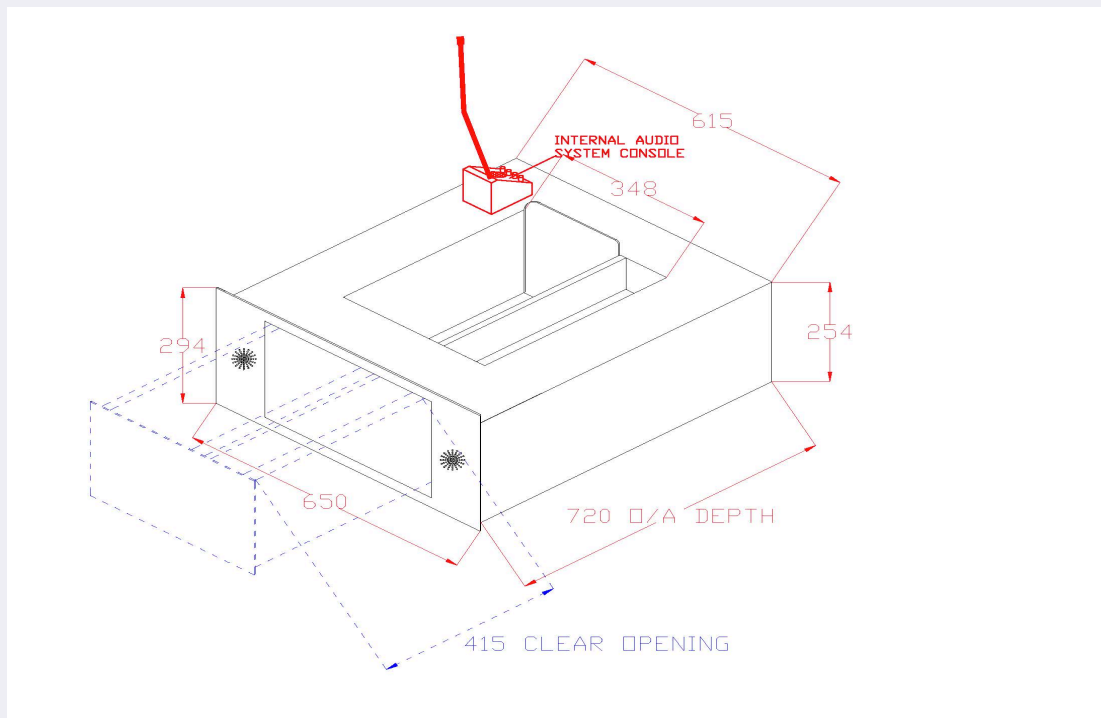
UNIT IS SUPPLIED FULLY ASSEMBLED AND WITH  
AUDIBILITY SYSTEM FACTORY BALANCED TO  
SIMPLY PLUG INTO AN EXISTING 13AMP SOCKET.  
EXTERNALLY THE UNIT HAS A 18mm FLANGE TO ALL  
SIDES TO COVER ANY IRREGULARITIES IN  
STRUCTURAL OPENING AND TO ALLOW THE UNIT  
TO BE SEALED TO STRUCTURAL OPENING USING  
SUITABLE MASTIC SEAL. THE UNIT IS SUPPLIED  
WITH A PRE-DRILLED INTERNAL FIXING ANGLE THAT  
IS SCREW FIXED TO THE BASE UNIT SIDES AND  
WALL. THE MAXIMUM RECOMMENDED GLAZING  
RAIL DEPTH IS 150mm ALTHOUGH THICKER RAILS  
CAN BE ACCOMMODATED BUT OPERATION OF THE  
DRAWER UNIT IS THEN RESTRICTED AND PASSING  
SIZE REDUCED.

**OPTIONS:**

STAINLESS STEEL SUPPORT LEGS

VISION PANELS

**SUITABLE FOR EXTERNAL USE UNDER A CANOPY**



**SUITABLE FOR EXTERNAL USE UNDER A CANOPY**