

# AXC-800 II

## COMPONENT COUNTING SYSTEM



## AXC-800-II Component Counting System

The Scienscope AXC-800 II makes inventory management and component counting even more fast, accurate and easy. Simply place reels in the system, close the door and the count begins automatically. 40 seconds later it has completed the task of counting four 7" reels. This system features an internal barcode scanner. Save time, save labor, save money and avoid the dreaded "line down" scenario due to lack of a component.

### Applications

- ✓ Tubes
- ✓ JEDEC Trays
- ✓ 7" Reels
- ✓ BGA Ball Count
- ✓ Loose Wound Components
- ✓ Cut Strips
- ✓ Copper Splice
- ✓ Sealed ESD Bags
- ✓ Tightly Wound Components
- ✓ Desiccant Penetrable

### System Details



### FEATURING

- Fast, Intuitive, user friendly software interface with 99.9% accuracy
- Scanning of (4) 7" reels simultaneously
- Scanning of JEDEC trays and counting of BGA balls
- Scanning of loose wound components or tightly wound components
- Scanning inside ESD bags
- Built in library & Internal Barcode Scanner
- Small footprint
- Industrial PC: Microsoft Windows 10 (64-bit)

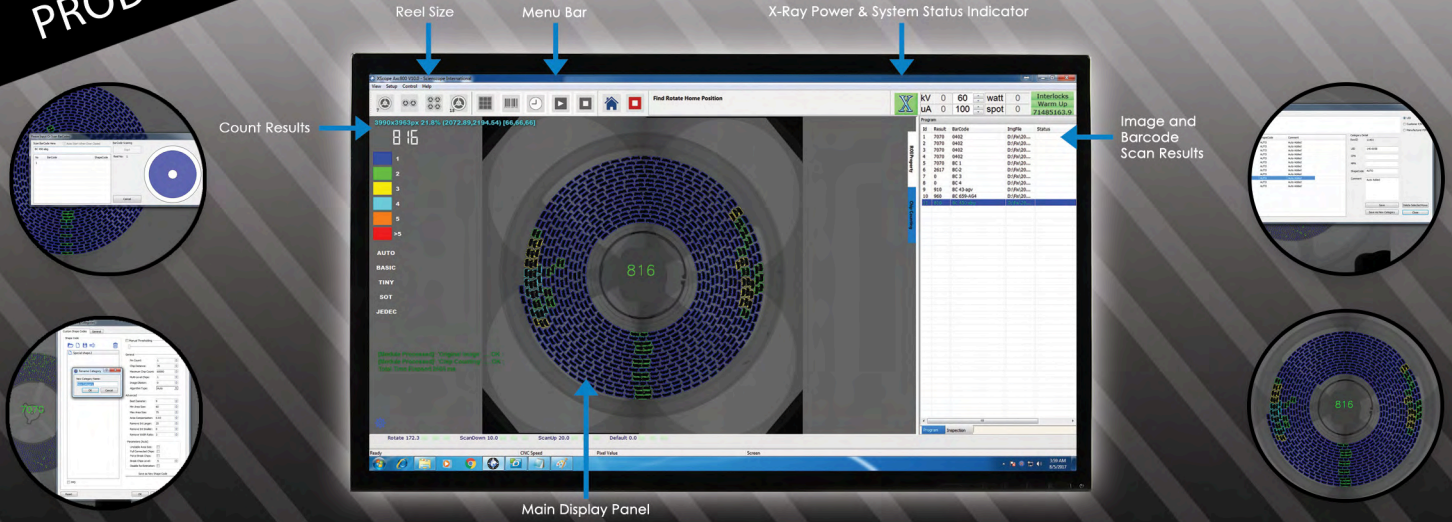


**SCAN THIS CODE  
WITH YOUR SMART PHONE**



PRODUCT SPECIFICATIONS

WELCOME TO THE FUTURE OF  
**COMPONENT COUNTING!**



MACHINE SPECIFICATIONS



Technical Operation

- ✓ Compatible Reel Sizes: (1-4) 7" reels, compatible reel height up to 32mm (standard)
- ✓ Minimum Component Size: 01005"
- ✓ Count Accuracy: >99.9%
- ✓ Cycle Time: (1) 7" reel approximately 7-10 seconds, (4) 7" reels approximately 35-40 seconds.
- ✓ Types of Inspection: Standard SMT and TH, Standard reels up to 7" diameter, Cut Strips, ESD Bags, JEDEC Trays and BGA Ball Count.
- ✓ Barcode Reader: Internal
- ✓ Label Printing: Software interface for automatic label printing of barcodes / component count results. (Label printer optional)

X-Ray Tube

- ✓ X-Ray Source: Micro-focus, integrated (closed)
- ✓ Operating voltage: 80kV

Line Scan

- ✓ Grayscale: 16 bit (65,536 shades of grayscale)
- ✓ Resolution: 8k

General Machine Specs

- ✓ Dimensions: 30" x 30" x 34" / 750mm x 750mm x 856mm
- ✓ Weight: 450kg /990 lbs.
- ✓ Power: AC 110 – 220 VAC 50/60 Hz 0.8kW
- ✓ Industrial PC: Microsoft Windows 10 (64-bit)

THIS SYSTEM INCLUDES A 1 YEAR WARRANTY ON PARTS AND LABOR

Compliance

THE SCIENSCOPE X-SCOPE X-RAY INSPECTION SYSTEMS MEET THE FDA-CDRH REGULATION CFR 21.1020.40 SUBCHAPTER J FOR CABINET X-RAY SYSTEMS. THE FDA-CDRH STANDARD FOR CABINET X-RAY SYSTEMS STATES THAT RADIATION EMISSIONS WILL NOT EXCEED 50 MICRO R/HR 5 CM FROM ANY EXTERNAL SURFACE. THE X-SCOPE X-RAY INSPECTION SYSTEMS TYPICALLY HAVE A RADIATION EMISSION READING OF LESS THAN 20 MICRO R/HR 5 CM FROM ANY EXTERNAL SURFACE. ALL SCIENSCOPE X-SCOPE X-RAY SYSTEMS HAVE A CE APPROVAL. SCIENSCOPE X-SCOPE X-RAY SYSTEMS ARE CLASSIFIED AS "CABINET X-RAY SYSTEMS" AND REQUIRE NO EXTERNAL RADIATION SHIELDING. WELDED STEEL / LEAD-STEEL CONSTRUCTION, NO VISIBLE SHIELDING.

FDA ACCESSION NUMBER: 0710198

CE REFERENCE NUMBER: CN.CE.0402-05.09

