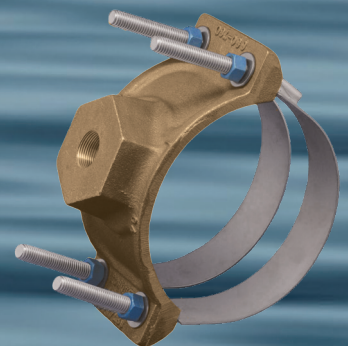
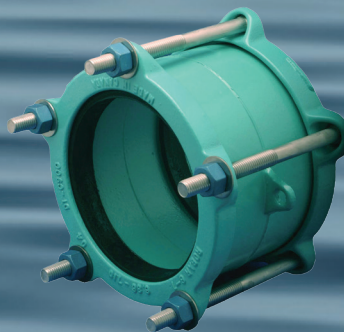
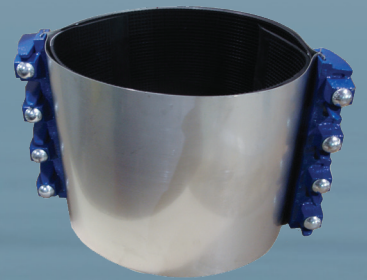
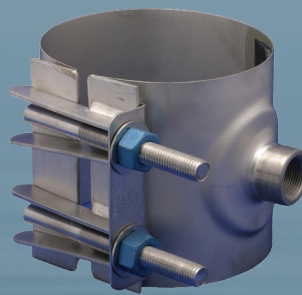




# WATERWORKS DIVISION



Cast and fabricated waterworks fittings.  
Proven and time tested. Quality you can depend on.

# COUPLINGS

PRODUCT	PRODUCT NUMBER AND DESCRIPTION	APPLICATION	TYPE OF PIPE	FOR PIPE SIZES	WORKING PRESS.**
	Stainless Steel Coupling <b>1696-2B</b> SS Fasteners	Can be used to couple dissimilar pipe diameters in the same nominal size group.	Ductile Iron Cast Iron Steel A/C, PVC HDPE***	4" through 8" 10" through 12"	305 psi 200 psi
	Cast Couplings, Enamel Coated <b>1406/1406R</b> SS Fasteners <b>1408/1408R</b> HSLA Fasteners	Connections between pipes of same nominal size.	Ductile Iron Cast Iron Steel A/C, PVC HDPE***	2" through 12" 14" through 24"	300 psi 150 psi
	Cast Couplings, Epoxy Coated <b>1506/1506R</b> SS Fasteners <b>1507/1507R</b> Epoxy Coated, HSLA Fasteners with Anodes <b>1508/1508R</b> MS Fasteners	Connections between pipes of same nominal size and same or different OD's, but for areas where corrosion is a factor.	Ductile Iron Cast Iron Steel A/C, PVC HDPE***	2" through 12" 14" through 24"	300 psi 150 psi
	Cast couplings, Epoxy Coated, Cathodically Fitted <b>1519/1519R</b> Epoxy Coated, HSLA Fasteners	Connections between pipes of same nominal size and same or different OD's. Cathodically fitted to allow for electrical continuity throughout the entire fitting.	Ductile Iron Cast Iron Steel A/C, PVC HDPE***	2" through 12" 14" through 24"	300 psi 150 psi
	Vantage Coupling <b>1498</b> Enamel, MS fasteners <b>1496</b> Enamel, SS fasteners <b>1598</b> Epoxy, MS fasteners <b>1596</b> Epoxy, SS fasteners <b>1696</b> All Stainless Steel	Can be used to couple dissimilar OD's in the same nominal size. The "Vantage" coupling comes with a stab-fit design.	Ductile Iron Cast Iron Steel A/C, PVC HDPE***	4" through 10" 12"	175 psi 150 psi
	Stab-Fit Coupling <b>1406SF</b> SS Fasteners, Enamel Coated <b>1408SF</b> MS Fasteners, Enamel Coated <b>1506SF</b> SS Fasteners, Epoxy Coated	Allows for coupling pipe OD's from IPS to Old Cast Iron with no disassembly required.	Ductile Iron Cast Iron PVC Steel HDPE***	4" through 12"	300 psi
	Fabricated Steel Couplings <b>1806</b> SS Fasteners <b>1808</b> HSLA Fasteners <b>1906</b> SS Fasteners, Epoxy Coated	Non-restrained steel couplings used to flexibly join small or large diameter pipes, suited for higher pressures.	Ductile Iron Cast Iron Steel A/C, PVC HDPE*** CPP	4" through 96"*	Up To 1500 psi
	Fabricated Steel Reducing Couplings <b>1846</b> SS Fasteners <b>1848</b> HSLA Fasteners <b>1946</b> SS Fasteners, Epoxy Coated	Non-restrained steel reducing couplings used to flexibly join two pipes of different nominal size, suited for higher pressures.	Ductile Iron Cast Iron Steel A/C, PVC HDPE*** CPP	Large end: 6" through 48" Small end: 4" through 46"*	Up To 1500 psi
	HDPE Restrained Coupling <b>1906RSCHH</b> SS Fasteners <b>1908RSCHH</b> HSLA Fasteners	The Robar 1900RSCHH universal wide-range restrained mechanical couplings allow for plain end connections between HDPE plain ended pipes of the same or different outside diameter.	HDPE***	18" through 54"	Up to 254 PSI

**Note:** \*\* Working pressure is dependent on pipe diameter, condition of pipe, service conditions and application.

\*\*\* Restraints and inserts are recommended when installing on HDPE.

† This product is tested and certified by WQA to NSF/ANSI standard 61



**ROBAR INDUSTRIES LTD.**

www.robarindustries.com  
waterworks@robarindustries.com

**SURREY**

Telephone 604.591.8811  
Toll Free 1.800.663.6553  
Fax 604.591.5288

**SAINT-BRUNO**

Telephone 450.441.7525  
Toll Free 1.800.315.9525  
Fax 450.441.4894

# COUPLINGS, FCA'S & DISMANTLING JOINTS

PRODUCT	PRODUCT NUMBER AND DESCRIPTION	APPLICATION	TYPE OF PIPE	FOR PIPE SIZES	WORKING PRESS.**
	Galvanized Compression Coupling <b>1200 Series</b>	Connections between pipes of same nominal size.	Steel, HDPE	3/4" through 2"	Up to 150 psi
	<b>1606</b> Stainless Steel Couplings	Connections between pipes of the same OD.	All types	4" through 24"*	150 psi
	EBAA Cast Restraint Coupling Series <b>3800 Series</b>	Restrained coupling for use in joining two plain end pipes of the same or dissimilar OD's. Provides axial restraint with a safety factor of 2 to 1.	Ductile Iron Steel PVC HDPE***	4" through 12"	250 psi
	<b>1900RSC</b> Restraint Coupling	Used to join plain end pipe with a flexible restrained connection. Suitable for use on PVC and Ductile Iron pipe. Sizes 14" – 36". For smaller sizes see the EBAA 3800 Series Restraint Coupling.	Ductile Iron PVC	14" through 48"	to be specified
	EBAA Megaflange® Restraint Flange Adapter <b>2100 Series</b>	For adapting and restraining a plain end of Ductile Iron, PVC steel, or HDPE to a flange conforming to ANSI/AWWA C110. Not for use on plain end fittings.	Ductile Iron Steel PVC HDPE***	DI: 3"-48" Steel: 3"-12" HDPE: 3"-12" PVC: 3"-24"	Up to 350 psi
	ARPOL Install Coupling	Stainless Steel Coupling	Ductile Iron Cast Iron Steel PVC HDPE***	2" through 80"	to be specified
	ARPOL Repair Coupling	Stainless Steel Repair Clamp			
	ARPOL Fix Restraint Coupling	Stainless Steel Restraint Coupling	Ductile Iron Cast Iron Steel PVC HDPE***	4" through 48"	to be specified
	Flanged Coupling Adapters Cast Iron <b>7404</b> Enamel Coated, HSLA Fasteners <b>7406</b> Enamel Coated, SS Fasteners <b>7506</b> Epoxy Coated, SS Fasteners	Used to flexibly adapt plain end pipe to flanged end.	Ductile Iron Cast Iron Steel A/C, PVC HDPE***	4" through 12"	150 psi
	Fabricated Mild Steel Flanged Coupling Adapters <b>7808</b> Enamel Coated, HSLA Fasteners <b>7906</b> Epoxy Coated, SS Fasteners	Used to flexibly adapt plain end pipe to flange end.	Ductile Iron Cast Iron Steel A/C. PVC HDPE***	4" through 96"*	Up To 300 psi
	DMJ Dismantling Joint	Allows for adjustability once the flange and other flange fitting is in place. Provides longitudinal adjustment which allows for future modifications and adjustments. As well an easier way of repairing or doing maintenance on the flanged pipe system.	All types	4" through 96"	Up To 350 psi
	<b>7808DJ</b> Enamel Coated, HSLA Fasteners				
	<b>7906DJ</b> Epoxy Coated, SS Fasteners				
	<b>7404DJ</b> Enamel Coated, HSLA Fasteners <b>7506DJ</b> Epoxy Coated, SS Fasteners			4" through 12"	

**Note:** \* Larger sizes are available upon request.

\*\* Working pressure is dependent on pipe diameter, condition of pipe, service conditions and application.

\*\*\* Restraints and inserts are recommended when installing on HDPE.

**ROBAR INDUSTRIES LTD.**

www.robarindustries.com

waterworks@robarindustries.com





# SERVICE SADDLES

PRODUCT	PRODUCT NUMBER AND DESCRIPTION	APPLICATION	TYPE OF PIPE	FOR PIPE SIZES	WORKING PRESS.**
	Cast Ductile Service Saddles <b>2408</b> Enamel Coated with Low Alloy Steel Straps <b>2508</b> Epoxy Coated with Low Alloy Steel Straps	Used to take a service outlet off a transmission or distribution line. 	Ductile Iron Cast Iron Steel	4" through 16"	350 psi
	Cast Ductile Service Saddles <b>2406</b> Enamel Coated with Stainless Steel Straps <b>2506</b> Epoxy Coated with Stainless Steel Straps	Used to take a service outlet off a transmission or distribution line in a corrosive area. 	Ductile Iron Cast Iron Steel PVC	2" through 16"	350 psi
	Stainless Steel Service Saddles <b>2616</b> One Closure			2" through 12"	250 psi
	Stainless Steel Service Saddles <b>2626</b> Two Closures	Used to take a service outlet off a transmission or distribution line. Recommended for plastic pipe or where corrosion is a factor.	Ductile Iron Cast Iron Steel A/C, PVC Dry Tap on HDPE	3" through 18"	250 psi
	Stainless Steel Service Saddles <b>2636</b> Three Closures			16" through 30"	250 psi
	Cast Bronze Service Saddles <b>2706</b> Cast Bronze body with Stainless Steel Straps	Used to take a service outlet off a transmission or distribution line, where corrosion is a factor.	Ductile Iron Cast Iron Steel A/C, PVC Dry Tap on HDPE	4" through 24"	150 psi
	<b>2786</b> Isolating Saddles	Used to electrically isolate an outlet or service line.	Ductile Iron Cast Iron Steel	6" through 16"	150 psi
	<b>2996</b> Concrete Cylinder Service Saddle	Used for making 3/4 -2" IP or CC taps into concrete steel cylinder pipe	CPP	16" through 36"	150 psi
	Sewer Saddles <b>3406</b> Two Coats of Enamel with Stainless Steel Straps <b>3506</b> Corrosion Protective Epoxy Coated with Stainless Steel Straps	Used to make a 4" inlet branch to a gravity main sewer line.	Ductile Iron Cast Iron PVC, HDPE, A/C	6" through 48"	Gravity

**Note:** \* Larger sizes are available upon request.

\*\* Working pressure is dependent on pipe diameter, condition of pipe, service conditions and application.

† This product is tested and certified by WQA to NSF/ANSI standard 61



**ROBAR INDUSTRIES LTD.**

www.robarindustries.com  
waterworks@robarindustries.com




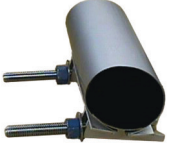
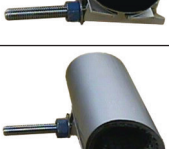
**SURREY**

Telephone 604.591.8811  
Toll Free 1.800.663.6553  
Fax 604.591.5288

**SAINT-BRUNO**

Telephone 450.441.7525  
Toll Free 1.800.315.9525  
Fax 450.441.4894

# REPAIR CLAMPS

PRODUCT	PRODUCT NUMBER AND DESCRIPTION	APPLICATION	TYPE OF PIPE	FOR PIPE SIZES	WORKING PRESS.**
	Stainless Steel Repair Clamps <b>5616</b> One Closure	Used to effectively repair holes and breaks in water mains.  A wide range of designs, lengths, or diameters are available.  ¾" – 2" IP or CC Outlets are available on all repair clamps.	Ductile Iron Cast Iron Steel A/C, PVC HDPE	3" through 12"	150 psi
	Stainless Steel Repair Clamps <b>5626</b> Two Closures			3" through 16"	150 psi
	Stainless Steel Repair Clamps <b>5636</b> Three Closures			12" through 30"*	150 psi
	Stainless Steel Repair Clamps <b>5696</b> Partial Wrap Gasket	Used to repair small punctures, pinholes and splits requiring only a partial wrap gasket.	Ductile Iron Cast Iron Steel A/C, PVC HDPE	2" through 8"	150 psi
	Stainless Steel Repair Clamps <b>5696SC</b> Partial Wrap Gasket			1/2" through 4"	
	Stainless Steel Repair Clamps <b>5606</b> Full Wrap Gasket	Used to repair small holes or breaks in water mains.	Ductile Iron Cast Iron Steel A/C, PVC HDPE	2" through 8"	150 psi
	Stainless Steel Repair Clamps with Ductile Lugs <b>5518</b> One Closure	Used to effectively repair holes and breaks in water mains.  A wide range of designs, lengths, or diameters are available.  ¾" – 2" IP or CC Outlets are available on all repair clamps.	Ductile Iron Cast Iron Steel A/C, PVC HDPE	3" through 12"	150 psi
	<b>5528</b> Two Closures			3" through 16"	
	<b>5538</b> Three Closures			12" through 30"	
	<b>5508</b> Bell Joint Leak Clamp	Used to repair leaking ductile Iron & Cast Iron Bell Joints.	Cast Iron Ductile Iron	4" through 36"	150 psi

**Note:** \* Larger sizes are available upon request.

\*\* Working pressure is dependent on pipe diameter, condition of pipe, service conditions and application.








**ROBAR INDUSTRIES LTD.**

www.robarindustries.com

waterworks@robarindustries.com



# TAPPING SLEEVES & EXPANSION JOINTS

PRODUCT	PRODUCT NUMBER AND DESCRIPTION	APPLICATION	TYPE OF PIPE	FOR PIPE SIZES	WORKING PRESS.**
	Cast Tapping Sleeves <b>6404</b> Enamel Coated, HSLA Fasteners <b>6506</b> Epoxy Coated, Stainless Steel Fasteners	Used to make a flanged outlet off a main supply line.	Ductile Iron Cast Iron	4" through 8"	150 psi
	<b>6606</b> Stainless Steel Tapping Sleeves – available in lifter bar style or Bolt Bracket – available with Stainless Steel flange or carbon steel flange	Used for "Wet" or "Hot" applications.	Ductile Iron Cast Iron Steel A/C, PVC	4" through 24"	175 psi
	<b>6626</b> Stainless Steel Outlet Sleeves	Used for "Dry Tap" applications. Particularly suited for use on HDPE.	Ductile Iron Cast Iron Steel A/C, PVC HDPE	4" through 24"	150 psi
	<b>6636</b> Abandon Service Sleeve	Used to seal off abandoned or/ decommissioned 3/4" to 2" main stops. Allows for no disruption in water service. No re-chlorination of lines due to atmospheric exposure.	All types	4" through 24"	150 psi
	Fabricated Mild Steel Tapping Sleeves <b>6808</b> Enamel Coated, HSLA Fasteners <b>6906</b> Epoxy Coated, SS Fasteners	Used to make a flanged outlet off a main supply line.	Ductile Iron Cast Iron Steel A/C, PVC	4" through 48"	150 psi
	Concrete Cylinder Tapping Sleeves <b>6898</b> Enamel Coated, MS Fasteners <b>6996</b> Epoxy Coated, SS Fasteners	These fabricated sleeves are designed to reinforce the concrete cylinder pipe when the structural wires are cut and have the additional benefit of being able to be very easily installed.	CPP	16" through 120"	150 psi
	Fabricated Mild Steel Expansion Joints <b>8808</b> Enamel Coated, HSLA Fasteners <b>8908</b> Epoxy Coated, HSLA Fasteners <b>8906</b> Epoxy Coated, SS Fasteners	Used in pipelines where large longitudinal pipe movements are concentrated.	All types	3" through 96"	Up To 500 psi

**Note:** \* Larger sizes are available upon request.

\*\* Working pressure is dependent on pipe diameter, condition of pipe, service conditions and application.

† This product is tested and certified by WQA to NSF/ANSI standard 61.



**ROBAR INDUSTRIES LTD.**

www.robarindustries.com  
waterworks@robarindustries.com

**SURREY**

Telephone 604.591.8811  
Toll Free 1.800.663.6553  
Fax 604.591.5288

**SAINT-BRUNO**

Telephone 450.441.7525  
Toll Free 1.800.315.9525  
Fax 450.441.4894

# MISCELLANEOUS

PRODUCT	PRODUCT NUMBER AND DESCRIPTION	APPLICATION	TYPE OF PIPE	FOR PIPE SIZES	WORKING PRESS.
	The SIMTAP Drilling Machine	Used for drilling taps in mains. Available from 3/4" – 2".	All	All	N/A
	APAC Drilling Machine <b>9010</b>	Used for drilling taps in mains. Available from 3/4" – 2".	All	All	N/A
	Meter Couplings <b>9440</b> Cast Ductile Iron <b>9470</b> Cast Waterworks Bronze	Used for tapping to NPT standards to mate with flanged water meters.	N/A	1 1/2" 2"	150 psi 150 psi
	Adjustable Inserts <b>9626</b> Stainless Steel	Used to add hoop strength on thin wall PVC or HDPE pipe when using couplings, repair clamps or restraining devices.	HDPE	4" through 24"**	N/A
	Slikstyx Lubricant <b>Deluxe</b> - Non-Flammable <b>Regular</b> - Flammable	Used on gasket applications for easier installation.	Use on any gasketed water and sanitary pipes	All	N/A
	<b>Miscellaneous Tools</b> Torgue Wrench Deep Socket OD Tape	N/A	N/A	N/A	N/A
	AWWA M-11 Harness	Used to fully restrain flexible couplings on steel pipelines.	Steel Pipe	4" through 96"	Contact Robar
	Pipe Cradle Stand Flange Support Stand	Used to support pipe and flanges.	Ductile Iron Cast Iron Steel A/C, PVC HDPE	2" through 36" 3" through 24"	N/A
	<b>9500</b> FRP Back-up Flanges	Used to couple fiberglass pipes together. Suited for lines with corrosive chemicals.	FRP	1" through 30"	150 psi
	<b>4499</b> Restraint Lugs	Used on mechanical joint fittings to prevent pull out.	All	All	N/A

**Note:** \* Larger sizes are available upon request.  
Only products bearing the NSF61 logo stamp are compliant.

**ROBAR INDUSTRIES LTD.**

www.robarindustries.com  
waterworks@robarindustries.com







*A fully integrated foundry and manufacturing facility.  
Designing, Engineering and Manufacturing.*

**ROBAR INDUSTRIES LTD.**

[www.robarindustries.com](http://www.robarindustries.com)  
[waterworks@robarindustries.com](mailto:waterworks@robarindustries.com)

**SURREY**

12945 – 78th Avenue  
Surrey, BC V3W 2X8  
Telephone 604.591.8811  
Toll Free 1.800.663.6553  
Fax 604.591.5288

**SAINT-BRUNO**

1475 Rue St Marie Victorin  
St. Bruno, QC J3V 6B7  
Telephone 450.441.7525  
Toll Free 1.800.315.9525  
Fax 450.441.4894