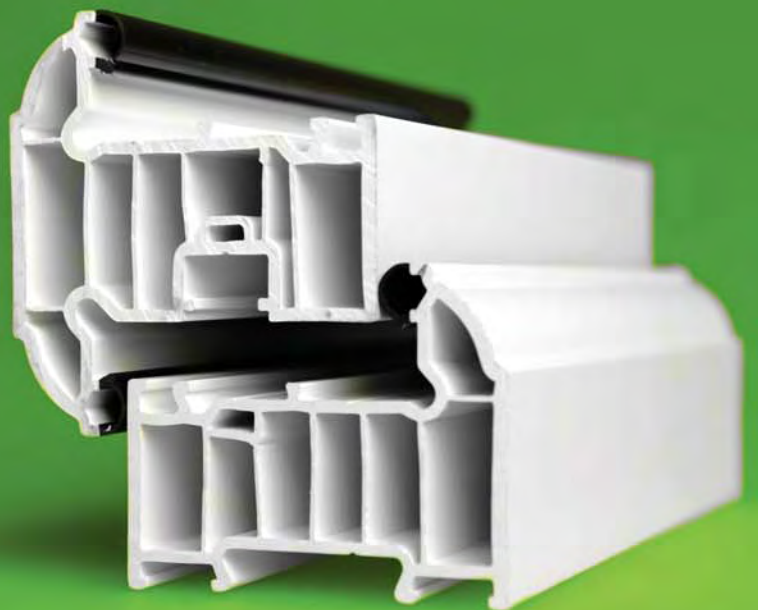
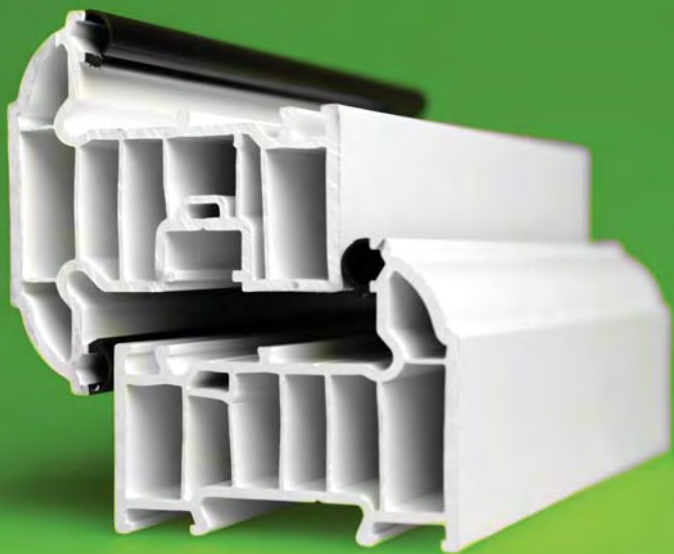


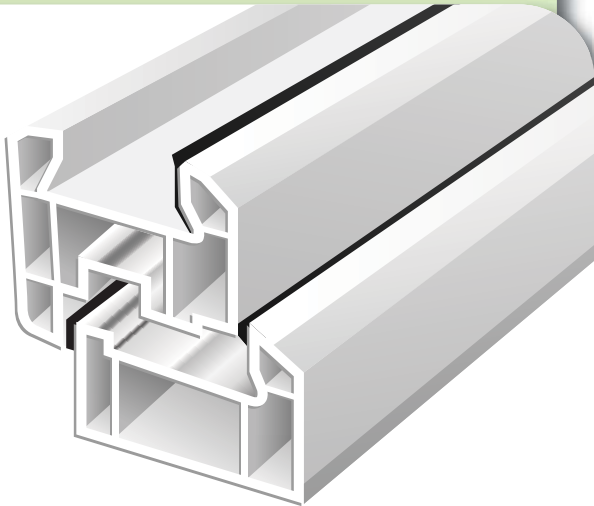
- 6 chamber system
- 100% lead free
- 'A' rated



The benefits to you of the eco energy plus 6 chamber system



eco energy plus 6 chamber system

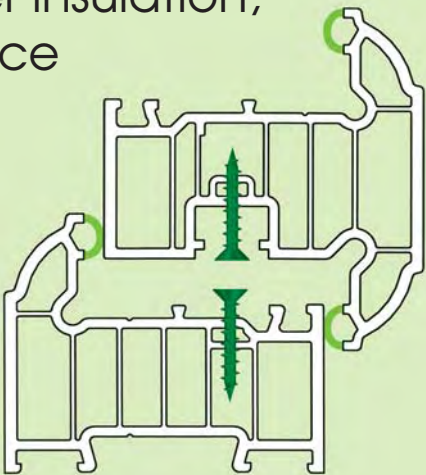


Industry standard 3 chamber system

The difference is plain to see...

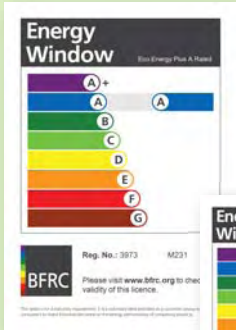
The **eco energy plus** 6 chamber system provides better insulation, strength and acoustic performance

- Profile construction made from 100% lead free PVCu.
- Bubble gaskets give an enhanced weatherseal - less chance of warmth escaping and no noisy drafts.
- Hinge screws located through two walls of thick PVCu for added security and strength, unlike other systems.



The **eco energy plus** system is highly energy efficient and environmentally friendly

'A' rated for energy efficiency

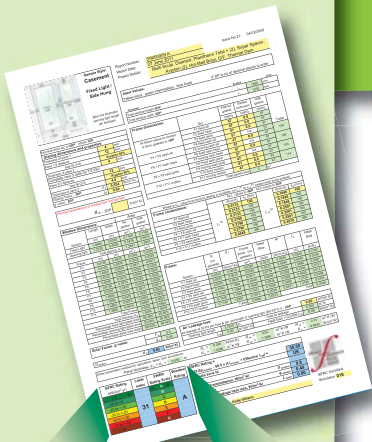


The **eco energy plus** window system has achieved a BFRC (British Fenestration Rating Council) Window Energy Rating of "A", the highest achievable.

The introduction of Window Energy Ratings (WERs) allows homeowners to shrink their carbon footprint and lower their fuel bills, by choosing a more energy efficient window system that reduces heat loss.

The **eco energy plus** window system uses it's multiple chambers to lock in the heat, and high performing bubble gasket seals to ensure there are no gaps for heat to escape.

The standard rating for the **eco energy plus** double glazed window is A7. You can easily upgrade this to achieve a rating of A+14 just by changing the external pane of clear float glass to low iron instead.



BFRC Rating	Label Index	EWER Rating Scale	Window Rating
<10 to <15	A	A	A
<15 to <20	B	B	B
<20 to <25	C	C	C
<25 to <30	D	D	D
<30 to <35	E	E	E
<35 to <40	F	F	F
<40 to <45	G	G	G

Up to A31 is possible!

Double glazed unit detail

Argon gas
Reduces conductive and convective heat transfers.

Warm edge bar
Up to 80% of energy loss through a window can occur at the edge. Conventional aluminium spacer bars conduct heat out and cold in, and have exceptionally high thermal energy loss.

Using a warm edge spacer bar will reduce heat loss at the edge of the window by up to 94%.

Double glazed windows fitted with warm edge spacer have an internal temperature of up to 65% warmer, reducing condensation on your sealed unit by up to 70%. This reduction in moisture virtually eliminates the chance of mould growth and potentially harmful bacteria.

Softcoat Low E glass
A transparent metallic coating reflects heat back into the room. The coating also allows heat and light from the sun to pass through the glass, warming the room, adding to the efficiency of your windows.

Low iron glass
The low iron content produces a higher light and energy transmittance.



A **greener** future...

100% lead free PVCu - helping the environment

The dangers of lead are well known - however the **eco energy plus** window and door system is 100% lead free - better for the environment, and better for you, unlike many other systems in the market place.

Did you know?

- Leaded 4 star petrol was withdrawn from sale in 2000 because of concerns over air and soil pollution and the accumulative neurotoxicity of lead.
- In 1992, European Union legislation was implemented within the UK by the Environmental Protection, and lead based paint was banned from sale to the general public, apart from specialist uses (historic buildings, arts).



Options and fine detail



Handle styles shown here are black "monkey tail", with dummy peg stay fitted to the bottom of the opening sash.



Steel hinge bolt
fitted as
standard



Centre "sash-seal"
(patent pending)
to all side openers,
ensures an efficient
weatherseal



Steel hinge bolt
fitted as
standard

Handles - colours and styles

White, black, polished chrome, polished gold, polished bronze and black "monkey tail". Satin silver is also available.



Triple glazing cross section

The **eco energy plus** system can also be triple glazed for further sound insulation and energy efficiency. The sealed unit thickness is 36mm overall.

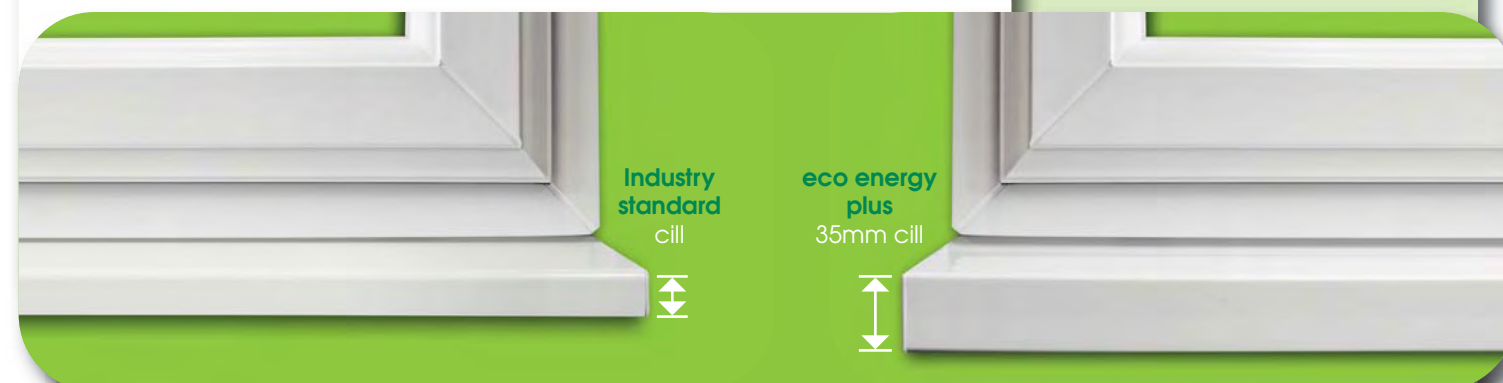
The standard triple glazed energy rating is A+16. You can improve this further to A+20 by changing the external pane of clear float glass to low iron.

For further information, please refer to our triple glazed literature.

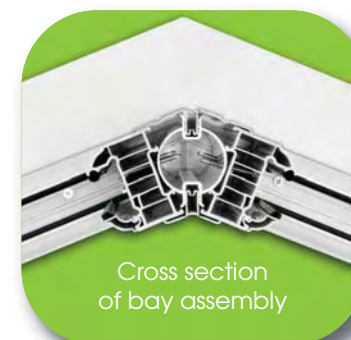


eco energy PLUS

The **eco energy plus** external window cill is 35mm deep at the front, looking more like a traditional thick timber cill. This is nearly twice the thickness of an industry standard PVCu cill.



The **eco energy plus** bay assembly is much slimmer than other conventional bay joints. This provides you with more glass area, instead of a "bulk" of PVCu.



Cross section
of bay assembly



Inner
Internal trim only a
maximum of 40mm



Outer



Sash horn

Optional "**run thru sash horns**" for top hung sashes only. An excellent replica of a timber sash horn.



Security, peace of mind, and £5,000 worth of benefits all come with the...



ERA Five Star Guarantee

In the unlikely event of a break-in succeeding through the failure of a security guaranteed window or door*, you are covered as follows:



A £1,000 cheque to compensate you for the inconvenience of the break-in.



Up to £1,000 to cover the cost of replacing the window or door that's been compromised.



Up to £1,000 to cover the excess on any home insurance claim due to the failure of one of our products.



A free call out service to secure your property if you are broken into, 24 hours a day / 365 days a year, no questions asked.



Plus, you are likely to enjoy...

Savings on your home insurance costs, because you've chosen to fit windows and doors with the highest levels of security.

ERA Securing Britain's homes since 1838



ERA have been designing and manufacturing the door and window hardware that secures Britain's homes for over 175 years. With all that knowledge and experience built into their innovative products, ERA have become the experts choice for high quality, reliable security solutions.

The UK's most comprehensive home security guarantee, from a company you can trust

Anti-pick

Anti-drill

Anti-snap

Anti-bump



Invincible 3 star high security cylinder

The ERA **"INVINCIBLE"** door cylinder has **85% more metal** than a standard cylinder!

Standard euro cylinders are notoriously weak – they need a central fixing hole to secure them in place, and there's 50% less metal in this area than at the front or back section of the cylinder – it's this lack of material that makes cylinder snapping so easy.

The ERA Invincible cylinder addresses that area of weakness head on. The Invincible has a newly designed robust "squared" off platform that significantly strengthens the mechanism against attack. The patented protected design completely removes the ability to break into a cylinder.

Manufactured from solid brass, it has 85% more metal than a standard euro cylinder – this unique design is the powerhouse of the lock world.

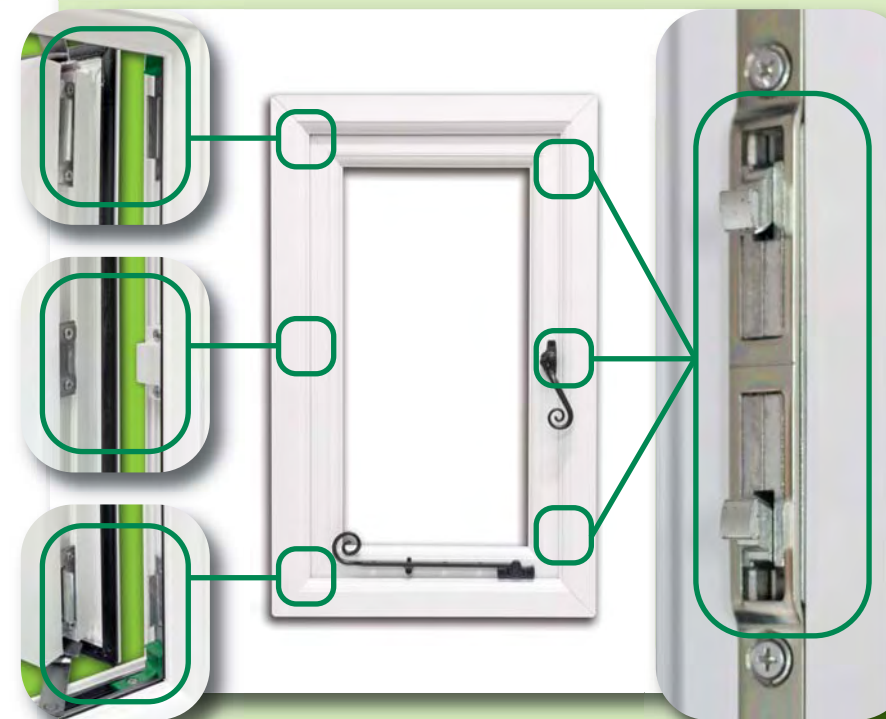
The Invincible cylinder is fully Kitemarked and certified to TS007:2014 and BS EN 1303:2005.



Standard Euro cylinder

*doors covered are single doors, french doors and composite doors fitted with an ERA lever/lever or lever/pad lock

ERA locking system



Windows

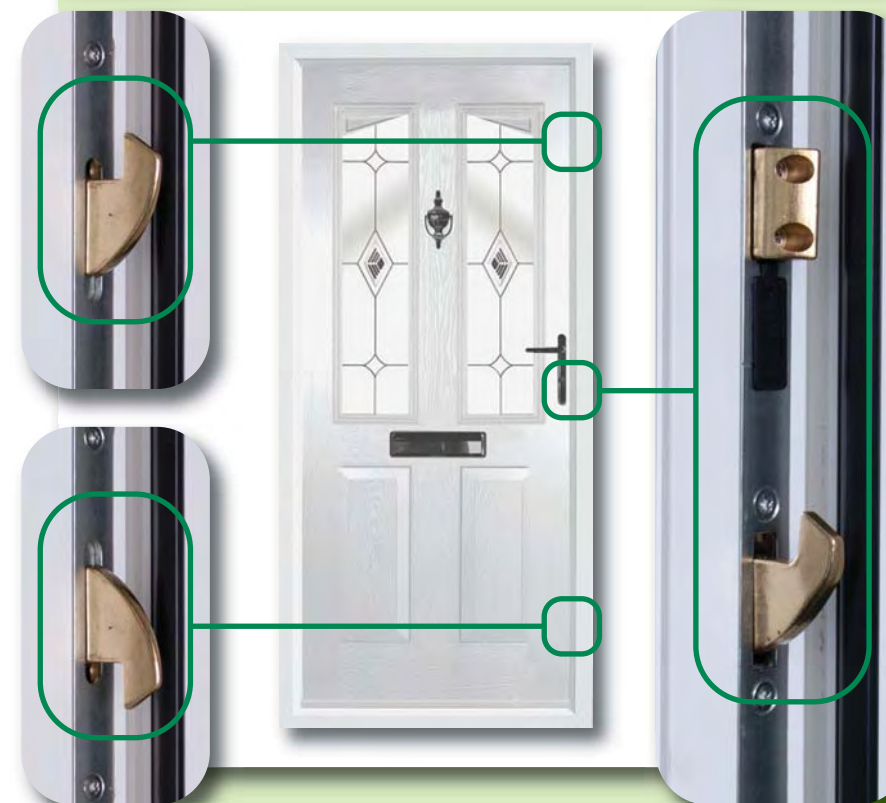
"Bear grip" twin hooks at every locking point for increased resistance against attack

11mm steel hook penetration for **maximum security**

Lock designed based on **multi-point door lock** technology

Covered by the **ERA Security Guarantee for 10 years**

High security hinge bolts fitted as standard



Doors

3 high security hooks with 10mm engagement into one piece high security keep

Bi-directional throw of locking features provides secure **anti-jimmy feature**

High security hooks are **deadlocked** in fully thrown position

Precision adjustable rollers for **smooth locking operation** and enhanced weather sealing

Shootbolt top and bottom on French doors

Covered by the **ERA Security Guarantee for 10 years***

10 YEAR
Guarantee



TS007: 2014

PAS 024



The perfect finish

Our standard white is a high gloss finish, making it easier to keep your new windows and doors bright and white for years to come.

Many other systems have a matt, grainy finish, which the dirt will cling to, making it much harder to keep clean.

If white isn't what you're looking for, we have a wide range of colours and wood finishes. What about smooth cream or white woodgrain? **The choice is yours...**



Actual colours may vary due to the printing process. For accurate colour selection please refer to foil swatches from your installer.

System accreditations

The Linar system is BSi registered, BBA accredited and is designed for high security and energy efficiency. Their Secured By Design accreditation illustrates their commitment to quality and security.



BS EN 12608:2003
KM522037



BS EN 7590:1999
KM522039



PAS 23-1:1999
KM522040



PAS 24-1:2007
KM522040

