

- **Protects against flooding**
- **Eliminates reverse flows through piping systems**
- **Controls the spread of odour & gases**
- **Easy to install, even in existing pipes and chambers**
- **No mechanical parts**
- **Self-cleaning - minimal maintenance**

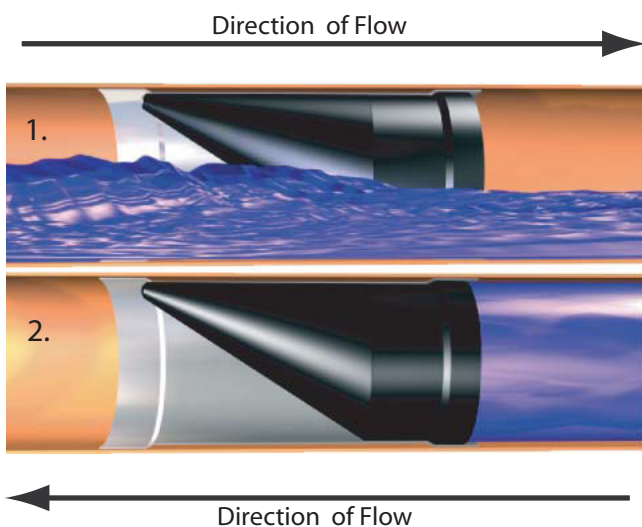


Typical Applications

The WaStop backflow valve consists of two parts, the elastomer sleeve (rubber membrane) and the pipe.

The pipe is made of either plastic or stainless steel. The standard sleeve is made of a specially formulated blend of elastomers which gives it exceptional shape retention and chemical resistance. The sleeve folds up and out of the way with very little pressure. Inversely the sleeve is able to resist several meters of pressure in the opposite direction.

The WaStop can be used to prevent sewer gas, effluent, sand or seaweed backflow into cellars or storm water drains. The WaStop can be used to protect against overflows in manholes, storm water drains, storm water tanks, sewage works, drainage pipes, culvert systems and ditches. The WaStop can even be used for water tower overflow pipes to protect against the entrance of animals and insects.

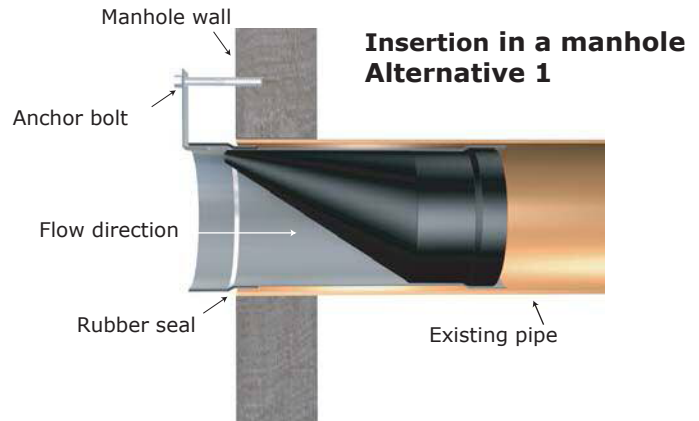
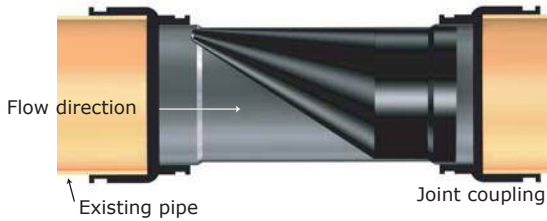


How the Valve Works

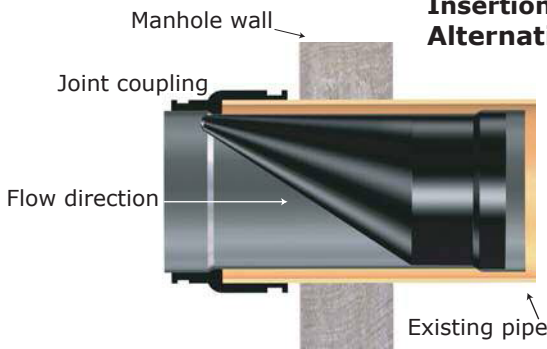
1. Flow into the inlet side of the valve causes a small pressure build-up against the rubber sleeve which in turn causes the sleeve to open just enough to allow the liquid to flow unhindered.

2. Reverse flow fills the 'cone' portion of the elastomeric sleeve, pressing it against the inside walls of the pipe and creating a seal. Neither fluid nor gases can pass back into the inlet side of the pipe.

Insertion in existing pipe



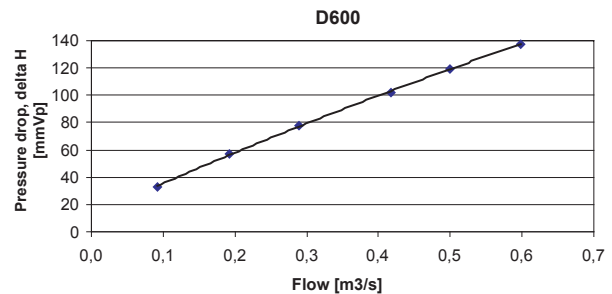
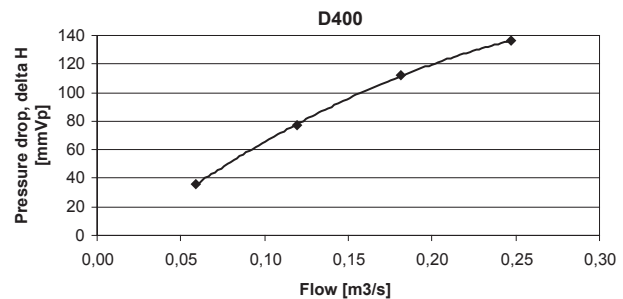
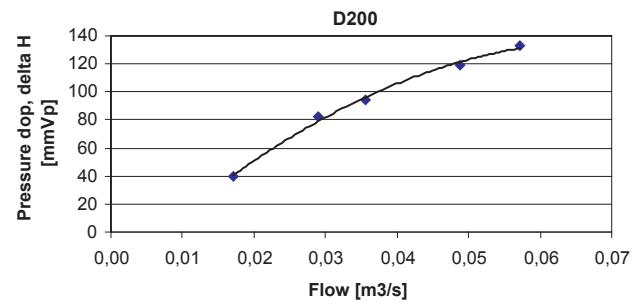
Insertion in a manhole Alternative 2



Dimensions

DN	ID	L
110	4"	9.5"
160	6"	12"
200	8"	16"
250	10"	18"
300	12"	24"
400	16"	31"
500	20"	39"
600	24"	47"
800	32"	59"
1000	40"	83"

Sample Flow Rate vs. Headloss Graphs.
Other valve sizes available upon request.
Based on flow testing by Vattenfall Utveckling AB.



Warranty Policy

All products manufactured by Elasto-Valve Rubber Products Inc. (EVR) are guaranteed against defects resulting from faulty workmanship or materials for one (1) year from date of shipment to Buyer. If any such product is found to be defective by reason of faulty workmanship or materials, then upon written notice and return of the product, and at EVR's sole discretion, the defective product will be replaced or repaired by EVR free of charge at EVR's factory. Claims for labour costs and other expenses required to replace and/or transport such defective product or to repair damage resulting from the use thereof will not be allowed by EVR. Our liability does not include consequential damages and is limited to the price paid for the defective product. EVR shall not be bound by any other warranty other than the above set forth unless such warranty shall be agreed in writing by EVR. All EVR literature is published in good faith and is believed to be reliable at time of print; however, due to product design changes EVR reserves the right to make alterations from published materials at any time. Formal approval drawings are available to confirm individual products upon request at time of order.

Distributed by:

ELASTO-VALVE RUBBER PRODUCTS INC.

1691 Pioneer Road, Sudbury,
Ontario Canada P3G 1B2
Tel. (705)523-2026 - Fax. (705)523-2033
Toll Free 1-800-461-6331 (N.A.)
Website: www.evrproducts.com
E-mail: sales@evrproducts.com

ISO 9001 Certified

