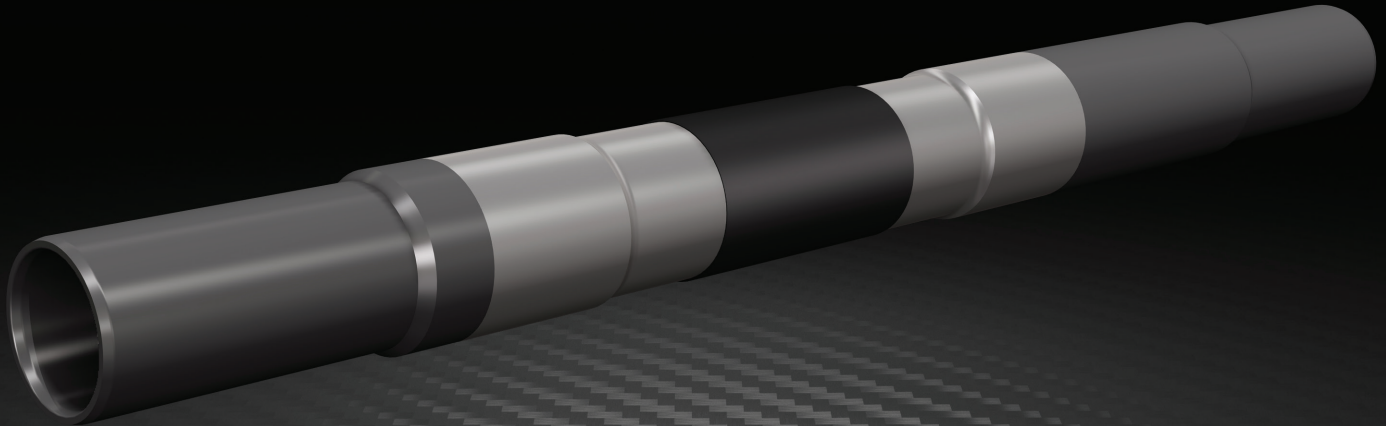




**STORM**<sup>™</sup>  
REFRAC PACKER



**FILL THE GAP BETWEEN VALUE AND PERFORMANCE**



**MORHPACKERS**<sup>™</sup>

# FILL THE GAP BETWEEN VALUE AND PERFORMANCE

Morphpackers deliver revolutionary and highly innovative expandable steel packers specializing in refrac packers and production packers and anchors for the global oil and gas sector.



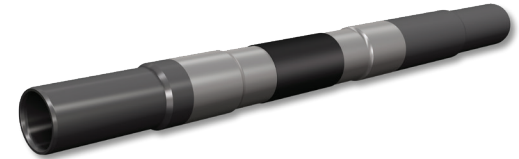
Expandable steel  
annular packers.



Lowest price to  
performance ratio for refrac  
completion solutions.



Reducing well construction costs.  
Optimizing production.  
Enhancing life of field.



## ABOUT

Based upon a 10 year old tried, tested, and proven technology, Morphpackers' STORM™ re-frac packer uses novel technology to provide the most cost effective way to instantly isolate and refracture stages. Our STORM re-frac packer provides the maximum ID in the market at an affordable price allowing you to pump a conventional frac. This new product application offers you a quick, reliable and streamlined approach to re-stimulation thus extending the life of your well.

As oil and gas production drops from previously stimulated wells so does cash flow. The STORM™ re-frac packer challenges this notion and offers a cost-effective way to re-stimulate existing wells. This paradigm shift in completion methodology reduces your capital expenditure, personnel requirements, logistics costs and environmental footprint.

## FEATURES

- Super Slim OD
- Big Bore ID design matching the drift of conventional pipe
- Instant on-demand active metal seal
- Simple deployment using conventional equipment
- Simple, robust and reliable design with no moving parts and no leak paths
- Differential pressure ratings up to 10,000 psi

## APPLICATIONS

- Run in cased hole/ energized with production tubing (or work string)
- Re-stimulation of multi-stage wells
- Isolation of old perforations
- Remedial straddle-patching

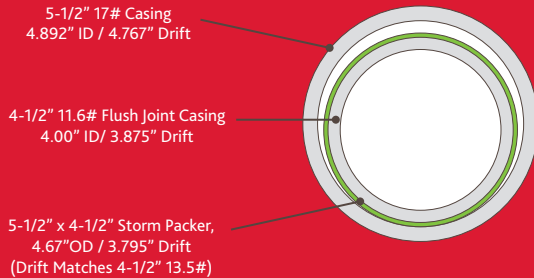
## BENEFITS

- Large ID allows for increased pumping rates
- Full re-stimulation control
- Minimal loss of ID matching standard liners
- Inert metallic sleeve impervious to wellbore fluids
- Flexible configuration / uses standard plug & guns and ball drop sleeve systems
- Cost effective alternative to expensive expandable liners and unreliable chemical diverter solutions

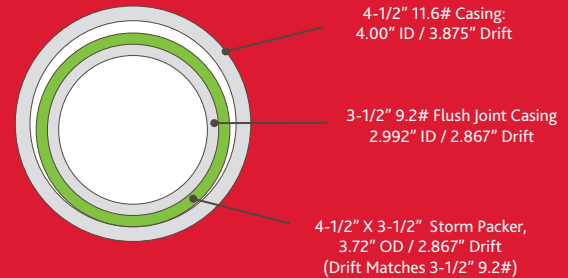
# DIMENSIONS

CASING SIZE	CASING WEIGHT	TUBING SIZE	PACKER OD	PACKER DRIFT ID	PRESSURE RATINGS
4.50"	11.6# - 13.5#	3.50"	3.720"	2.867"	10,000 PSI
5.50"	14# - 17#	4.50"	4.670"	3.795"	
	20#	4.50"	4.580"		

**Cross-Section Drawing Showing 5-1/2" 17# Casing with the 5-1/2" x 4-1/2" Storm Packer System**



**Cross-Section Drawing Showing 4-1/2" 11.6# Casing with the 4-1/2" x 3-1/2" Storm Packer System**



**Morphpackers**  
2203 Timberloch Place, Suite 100  
The Woodlands, TX 77380

**+1 281 296 1679**  
[info@morphpackers.com](mailto:info@morphpackers.com)  
[www.morphpackers.com](http://www.morphpackers.com)