

Brackenheath 



Product Guide **2013/2014**

Service that shines through



Welcome to the new issue of the **Brackenheath** catalogue, which includes a comprehensive range of interior and exterior LED, fluorescent and traditional lighting products and accessories.

Brackenheath has a pedigree stretching back over 30 years and has earned the reputation for supplying quality products at competitive prices.

Updates in legislation and continuous product development, particularly in LED technology, allows **Brackenheath** to be at the forefront by offering the latest in LED lighting, which offer up to 85% energy savings against conventional light sources, significantly reducing running and maintenance costs.

The **Brackenheath** team provides its customers with a first class service and strives to offer the latest in low energy and LED light sources for the future.



Contents

Cabinet Lighting	5-18
Ceiling and Wall Lighting	19-34
Bathroom Products	35-40
Floodlighting	41-56
HID Retrofit Lamps	57-66
Weatherproof Luminaires	67-70
Emergency Lighting	71-76
Bulkheads and Lanterns	77-88
Garden Lighting	89-101
Index	102



All **Brackenheath** products are covered by a 1 year guarantee unless otherwise stated

Quality Assured

Brackenheath is an ISO 9001 registered organisation. All our products are designed to a high specification to meet the relevant British and European Standards, allowing them to carry the CE mark where required.

Brackenheath is also registered to ISO14001:2004 Environmental Management Systems.



Icon Guide

Our latest catalogue has been designed to make ordering the **Brackenheath** product both quick and easy; you will find icons to help in locating products by key product features.



LED Icon

Indicates the product incorporates LED as the light source



Fireshield Icon

Indicates the product is fire rated and complies with Part B, C and E of the building regulations



Emergency Icon

Indicates the product has an emergency lighting option available



Indoor Use Icon

Indicates the product is suitable for indoor use



Outdoor Use Icon

Indicates the product is suitable for outdoor use



2 Year Guarantee Icon

Indicates the product is supplied with a 2 year guarantee



3 Year Guarantee Icon

Indicates the product is supplied with a 3 year guarantee



Energy Saving Icon

Indicates the product incorporates an energy saving light source



12V Icon

Indicates the product is designed to operate from a 12V supply

Cabinet Lighting

Linkable Lights	6-10
Under Cabinet Lights	11-17



LED Linkable Lights



Features

- Cool White LED's (4000K) – rated life of 30,000 hours
- Supplied with clear striped diffuser
- Complete with power lead, top or side mounting brackets, butt joiner and end cap (fitted)
- Integral driver
- Fittings are individually switched
- Flicker free quick start – non dimmable
- Can be connected butt to butt or using link lead connectors
- Suitable for kitchens, cabinets and domestic display lighting – IP20
- Width: 23mm, height: 43mm
- 230V



Wattage	T5 Alternative	Fitting Length	LED Quantity	Luminous Flux	No. of Fittings Linkable	Product Code
2W	6W	268mm	10	180lm	50	D2201
3W	8W	343mm	14	250lm	30	D2202
6W	14W	573mm	26	410lm	18	D2203
9W	21W	904mm	41	760lm	11	D2204
11W	28W	1204mm	55	1000lm	10	D2205

Description	Length	Product Code
Link Connector	250mm	D250A
Link Connector	500mm	D500A
Link Connector	1000mm	D1000A



LED Professional Linkable Lights



Features

- Warm White (3000K) or Daylight (6000K) LED's – rated life of 30,000 hours
- Premium aluminium base with frosted PC diffuser
- Complete with power lead, short link connector and brackets
- Integral driver
- Super bright light output
- Flicker free quick start – non dimmable
- Can be connected using link lead connectors
- Suitable for use in commercial applications – IP44
- Width: 24mm, height: 37mm
- 110-230V



Wattage	Colour Temperature	Fitting Length	Lumen Output	No. of Fittings Linkable	Product Code
7W	3000K	600mm	500lm	71	D2301
7W	6000K	600mm	500lm	71	D2311
14W	3000K	1200mm	1000lm	35	D2302
14W	6000K	1200mm	1100lm	35	D2312
17W	3000K	1500mm	1250lm	33	D2303
17W	6000K	1500mm	1350lm	33	D2313

Description	Length	Product Code
Link Connector	300mm	D2341
Link Connector	500mm	D2342
Link Connector	1000mm	D2343



C Range T4 Linkable Lights



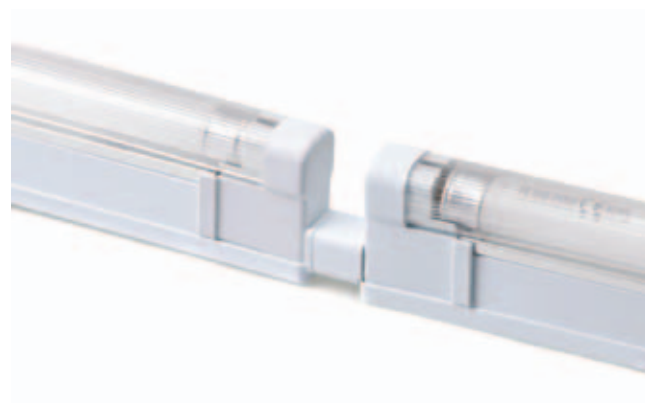
Features

- Supplied with White (3400K) T4 lamp and diffuser
- Complete with 2m power lead and top or side mounting brackets
- Fittings are individually switched
- Flicker free quick start – non dimmable
- Maximum linkable of 120W in any combination
- Can be connected butt to butt or using link lead connectors
- Suitable for kitchens, cabinets and domestic display lighting – IP20
- Width: 23mm, height: 43mm
- 230V



Wattage	Fitting Length	Lamp Pin-to-Pin	Lamp Cap-to-Cap	Product Code	Replacement Lamp Code
6W	275mm	217mm	205mm	C21A	C31A
10W	424mm	366mm	354mm	C22A	C32A
16W	523mm	465mm	453mm	C23A	C33A
20W	620mm	565mm	553mm	C24A	C34A
25W	710mm	654mm	642mm	C25A	C35A
30W	821mm	763mm	751mm	C26A	C36A

Description	Length	Product Code
Link Connector	250mm	C27A
Link Connector	500mm	C28A
Link Connector	1000mm	C29A

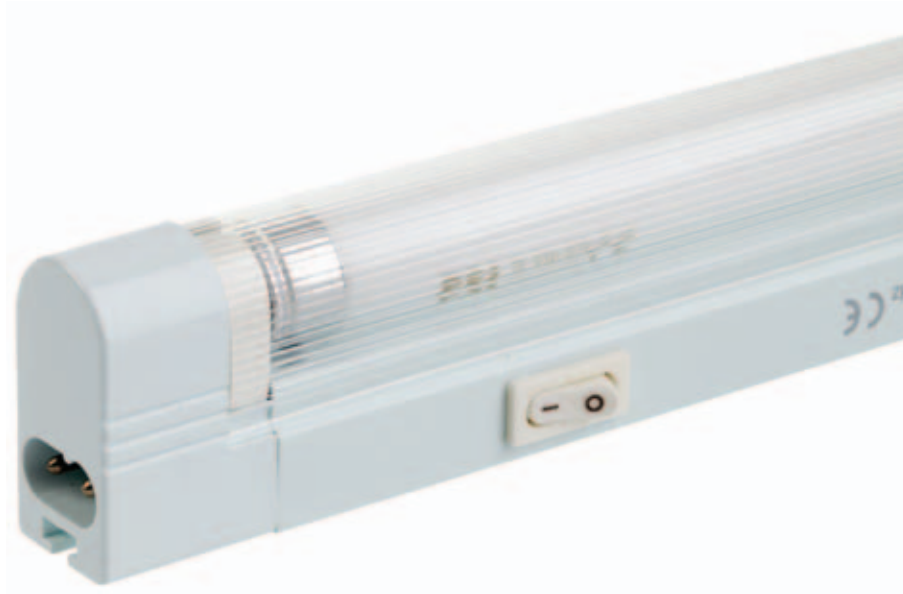


D Range T5 Linkable Lights



Features

- Supplied with White (3400K) T5 lamp and diffuser
- Complete with 2m power lead and top or side mounting brackets
- Fittings are individually switched
- Flicker free quick start – non dimmable
- Maximum linkable of 320W in any combination
- Can be connected butt to butt or using link lead connectors
- Suitable for kitchens, cabinets and domestic display lighting – IP20
- Width: 23mm, height: 43mm
- 230V



Wattage	Fitting Length	Lamp Pin-to-Pin	Lamp Cap-to-Cap	Product Code	Replacement Lamp Code
6W	268mm	225mm	213mm	D06A	DT6A
8W	343mm	302mm	290mm	D08A	DT8A
14W	605mm	561mm	549mm	D14A	DT14A
21W	904mm	860mm	848mm	D21A	DT21A
28W	1204mm	1161mm	1149mm	D28A	DT28A
35W	1504mm	1462mm	1450mm	D35A	DT35A

Description	Length	Product Code
Link connector	250mm	D250A
Link connector	500mm	D500A
Link connector	1000mm	D1000A



L Range T5 & T8 Linkable Lights



Features

- Supplied with White (3500K) T5 or T8 lamp
- Pre-fitted with L0009A butt connector
- Fittings are individually switched
- Flicker free quick start – non dimmable
- Can be connected butt to butt or using link lead connectors
- Requires L0001A power lead
- Suitable for use in commercial applications – IP20
- Width: 48mm, height: 77mm (T5) or 88mm (T8)
- 230V



Wattage	Fitting Length	Lamp Type	Product Code
6W	243mm	T5	L0243A
8W	320mm	T5	L0320A
15W	473mm	T8	L0473A
13W	548mm	T5	L0548A
18W	625mm	T8	L0625A
30W	930mm	T8	L0930A
36W	1230mm	T8	L1230A

Description	Product Code
Power Lead 1.5m	L0001A
Link Connector 200mm	L0002A
Link Connector 1m	L0003A
Male/female connectors (pair)	L0004A
Link Connector 1.5m	L0005A
Link Connector 2.5m	L0007A
Butt connector	L0009A
Link Connector 500mm	L0011A



LED 4W Cabinet Lights

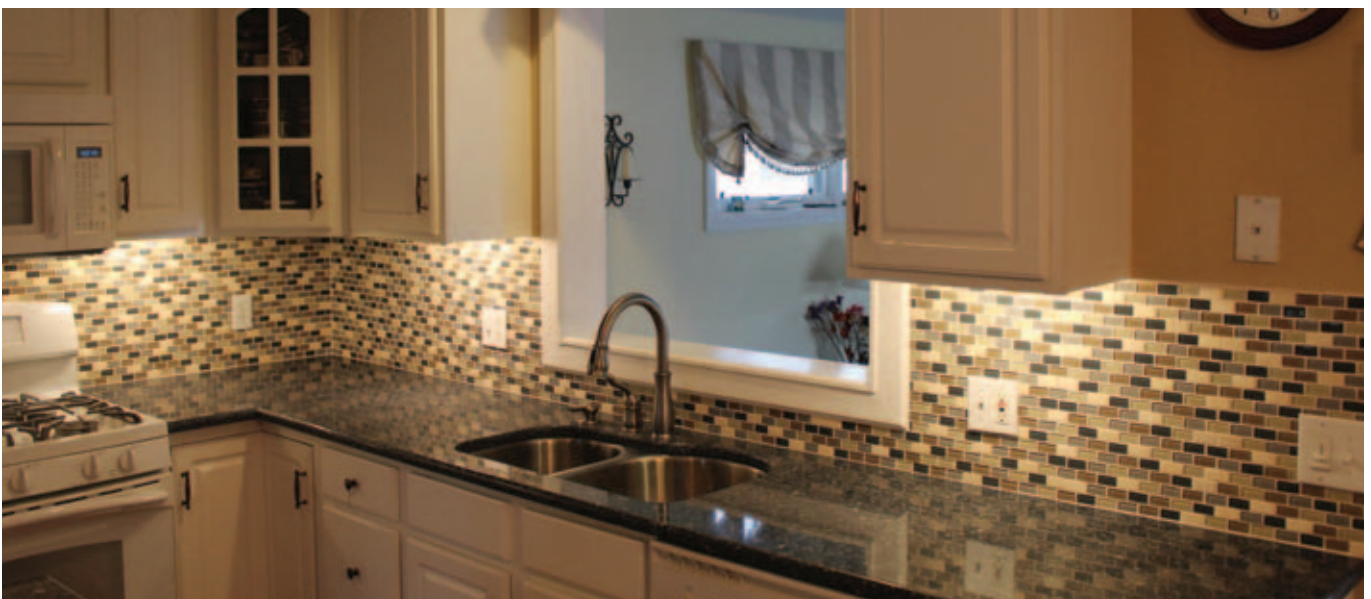


Features

- Available in Daylight (6000K) or Warm White (3000K)
- Rated life of 50,000 hours
- Supplied with plug in driver
- Recessed or surface mounted
- Beam angle 90°
- 70mmØ x 20mm – cut-out 63-65mm
- IP20
- 230V



Wattage	Colour Temperature	Lumen Output	Product Code
4W	6000K	240lm	A3071WH
4W	3000K	170lm	A3072WH



LED 1.8W Stainless Steel Downlight – 3 Pack



Features

- Cool White LED's (4000K)
- Rated life of 30,000 hours
- Set includes 3 downlights and plug in driver
- Each downlight rated at 1.8W
- Downlights have 2m lead
- Surface mounted
- 68mmØ x 14mm
- IP22
- 230V



Wattage	Colour Temperature	Lumen Output	Product Code
3 x 1.8W	4000K	120lm	M4010



LED 1.8W Stainless Steel Wedge Light – 3 Pack



Features

- Cool White LED's (4000K)
- Rated life of 30,000 hours
- Set includes 3 wedge lights and plug in driver
- Each wedge light rated at 1.8W
- Wedge lights have 2m lead
- Surface mounted
- 145mm x 86mm x 50mm (L x W x D)
- IP22
- 230V



Wattage	Colour Temperature	Lumen Output	Product Code
3 x 1.8W	4000K	120lm	M4020



LED 1.8W Stainless Steel Triangle Light – 3 Pack



Features

- Cool White LED's (4000K)
- Rated life of 30,000 hours
- Set includes 3 triangle lights and plug in driver
- Each triangle light rated at 1.8W
- Triangle lights have 2m lead
- Surface mounted
- 152mm x 130mm x 50mm (L x W x D)
- IP22
- 230V



Wattage	Colour Temperature	Lumen Output	Product Code
3 x 1.8W	4000K	120lm	M4030



CFL 7W Stainless Steel Triangle Light



Features

- Supplied with Warm White (3000K) 7W GX53 CFL lamp
- Complete with 2m lead
- Surface mounted
- 170mm x 150mm (L x W)
- IP20
- 230V



Wattage	Colour Temperature	Lamp Type	Product Code
7W	3000K	CFL GX53	M43 CFL



Halogen 20W Cabinet Lights



Features

- Supplied with 20W G4 capsule lamp
- Lamp concealed with protective glass
- Stainless steel triangle complete with 1.5m lead
- White downlight complete with 2m lead
- Triangle is surface mounted
- Downlight is recessed or surface mounted
- IP20
- 12V – use with Brackenheath R63 low voltage transformer



Wattage	Description	Dimensions	Product Code
20W	Downlight	65mmØ x 25mm	M37
20W	Triangle	138mm x 130mm	M41

Description	Product Code
20-60VA Dimmable Low Voltage Transformer	R63



Hilton 60W Strip Lights



Features

- Supplied with 284mm 60W strip light
- Moulded polycarbonate construction
- Opal diffuser
- Available switched or unswitched
- IP20
- 230V



Wattage	Description	Dimensions (L x H x D)	Product Code
60W	Unswitched	355mm x 45mm x 60mm	B62
60W	Push Switch	355mm x 45mm x 60mm	B64





Ceiling and Wall Lighting

Ceiling and Wall Lighting

20-33



Why Fire Rated Downlights must be used



In accordance with Building Regulations Approved Document B (Fire Safety), it is necessary that to inhibit the spread of fire within the building, the internal linings (walls & ceilings) shall adequately resist the spread of flames over the surface.

When fitted, recessed downlights effectively become part of the internal lining so they must not affect the fire resistance of the ceiling.

When installing **Fireshield** Fire Rated Downlights, you allow the building construction to comply with Part B - Fire safety of the Buildings Regulations, whether a 30, 60 or 90-minute fire barrier is required.

Fireshield Fire Rated Downlights have seals preventing air movement through the light fitting, which help reduce condensation building up. These seals also help reduce airborne and impact sounds, allowing the building to comply with Building Regulation Part E – Resistance to the Passage of Sound.

All in all, the new **Fireshield** fire rated downlights allow the installation to comply with the latest versions of the Building Regulations, and with fittings available in fixed, tilt and IP65 shower versions, in three finishes of white, chrome and satin chrome, all installations will look stylish whilst still functional.





Nylon Terminal Housing

Large terminal block allows loop in-out of cables to ease installation

Air Vents/Heat Sink

Large air vents and heat sink (on LED) maximise airflow allowing the light fittings to dissipate heat and reducing heat build up. This helps to prolong lamp life

Heat Resistant Cables

Cables are teflon coated, removing need for additional sheath

Intumescent Material

Intumescent material is incorporated into vents to seal the ceiling in the event of a fire

Mounting Springs

These can be fixed in a high position to allow installation into either single or double thickness plasterboard

Bezel

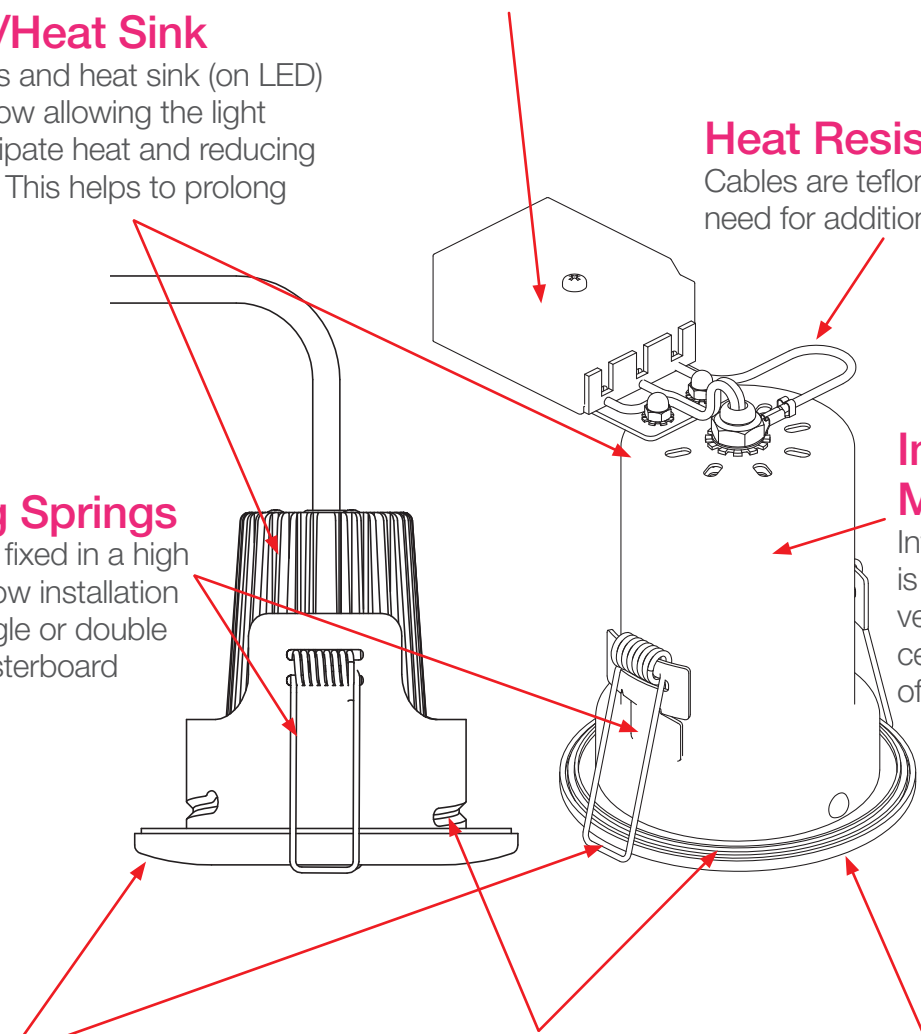
Twist and lock style bezels on all fittings, which retain the lamps for ease of replacement. IP65 fittings also incorporate tempered glass in the bezel

Gasket & Seals

The gaskets and seals prevent movement of air, allowing compliance with BS 5250 Control of Condensation, as well as allowing compliance with Part E of the Building Regulations (Passage of Sound)

Lamps

Aluminised lamps should be used in all fire rated downlights, which project light and heat forward



Fireshield™ LED Fire Rated Downlights



Features

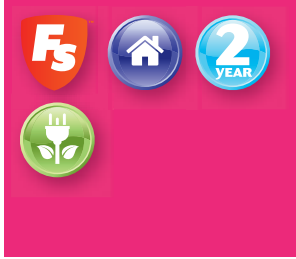
- Available in Daylight (5000K) and Warm White (3000K)
- High performance 10W dimmable LED
- Rated life of 40,000 hours
- Fire rated for 30, 60 & 90 minutes
- Complete with plug in dimmable driver
- Twist & lock bezel
- Available in white, chrome and satin chrome finishes
- Beam angle 36°
- IP65 – can be used in bathrooms
- 230V



Wattage	Colour Temperature	Finish	Cut-out	Void Depth	Lumen Output	IP Rating	Product Code
10W	3000K	White	65mm	100mm	480lm	IP65	A3010WH
10W	3000K	Chrome	65mm	100mm	480lm	IP65	A3010CH
10W	3000K	Satin Chrome	65mm	100mm	480lm	IP65	A3010SC
10W	5000K	White	65mm	100mm	580lm	IP65	A3020WH
10W	5000K	Chrome	65mm	100mm	580lm	IP65	A3020CH
10W	5000K	Satin Chrome	65mm	100mm	580lm	IP65	A3020SC



Fireshield™ Long Can Fire Rated Downlights



Features

- Suitable for use with long body LED and CFL lamps
- Fire rated for 30, 60 & 90 minutes
- Twist & lock bezel
- Available in white, chrome and satin chrome finishes
- Fixed and bathroom options available
- Three way terminal block for easy termination of cable
- GU10 lampholder
- 230V



Wattage	Description	Finish	Lamp	Cut-out	Void Depth	IP Rating	Product Code
50W	Fixed	White	GU10	74mm	180mm	IP20	A2030WH
50W	Fixed	Chrome	GU10	74mm	180mm	IP20	A2030CH
50W	Fixed	Satin Chrome	GU10	74mm	180mm	IP20	A2030SC
35W	Bathroom	White	GU10	74mm	195mm	IP65	A2032WH
35W	Bathroom	Chrome	GU10	74mm	195mm	IP65	A2032CH
35W	Bathroom	Satin Chrome	GU10	74mm	195mm	IP65	A2032SC



Fireshield™ Mains Voltage Fire Rated Downlights



Features

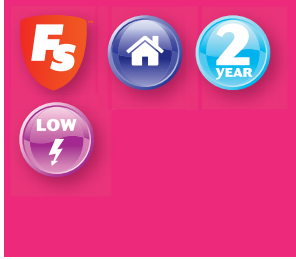
- Requires aluminium reflector lamps
- Fire rated for 30, 60 & 90 minutes
- Twist & lock bezel
- Available in white, chrome and satin chrome finishes
- Fixed, tilt and bathroom options available
- Three way terminal block for easy termination of cable
- GU10 lampholder
- 230V



Wattage	Description	Finish	Lamp	Cut-out	Void Depth	IP Rating	Product Code
50W	Fixed	White	GU10	74mm	180mm	IP20	A2010WH
50W	Fixed	Chrome	GU10	74mm	180mm	IP20	A2010CH
50W	Fixed	Satin Chrome	GU10	74mm	180mm	IP20	A2010SC
50W	Tilt	White	GU10	82mm	180mm	IP20	A2011WH
50W	Tilt	Chrome	GU10	82mm	180mm	IP20	A2011CH
50W	Tilt	Satin Chrome	GU10	82mm	180mm	IP20	A2011SC
35W	Bathroom	White	GU10	74mm	195mm	IP65	A2012WH
35W	Bathroom	Chrome	GU10	74mm	195mm	IP65	A2012CH
35W	Bathroom	Satin Chrome	GU10	74mm	195mm	IP65	A2012SC



Fireshield™ Low Voltage Fire Rated Downlights



Features

- Requires aluminium reflector lamps
- Fire rated for 30, 60 & 90 minutes
- Twist & lock bezel
- Available in white, chrome and satin chrome finishes
- Fixed, tilt and bathroom options available
- Requires Brackenheath R63 low voltage dimmable transformer
- MR16 lampholder
- 12V



Wattage	Description	Finish	Lamp	Cut-out	Void Depth	IP Rating	Product Code
50W	Fixed	White	MR16	74mm	180mm	IP20	A2020WH
50W	Fixed	Chrome	MR16	74mm	180mm	IP20	A2020CH
50W	Fixed	Satin Chrome	MR16	74mm	180mm	IP20	A2020SC
50W	Tilt	White	MR16	82mm	180mm	IP20	A2021WH
50W	Tilt	Chrome	MR16	82mm	180mm	IP20	A2021CH
50W	Tilt	Satin Chrome	MR16	82mm	180mm	IP20	A2021SC
35W	Bathroom	White	MR16	74mm	195mm	IP65	A2022WH
35W	Bathroom	Chrome	MR16	74mm	195mm	IP65	A2022CH
35W	Bathroom	Satin Chrome	MR16	74mm	195mm	IP65	A2022SC

Description	Product Code
20-60VA Dimmable Low Voltage Transformer	R63



LED Anti-Glare Downlights



Features

- Daylight (6000K) LED's
- Rated life of 30,000 hours
- Supplied with pre-wired driver
- Dimmable driver available separately
- Opal diffuser
- Ideal replacements for R50, R63 and R80 downlights
- Beam angle 105°
- IP20
- 100-230V



Wattage	Replacement	Dimensions	Cut-out	Void Depth	Lumen Output	Product Code
3W	R50	86mmØ x 65mm	75mm	110mm	220lm	B3010
7W	R63	108mmØ x 85mm	95mm	130mm	600lm	B3020
12W	R80	138mmØ x 90mm	121mm	170mm	930lm	B3030

Description	Product Code
LED Dimmable Driver 3-9W	B4010
LED Dimmable Driver 12-14W	B4020



Fire Hoods



Features

- For use with non fire rated recessed luminaires
- 60 minute ceiling protection
- No loss of insulation, integrity or stability
- Minimum clearance of 15mm above fitting
- Available in 5 different sizes



Dimensions (L x W x H)

Product Code

150mm x 150mm x 120mm	FH0
130mm x 130mm x 100mm	FH2
130mm x 130mm x 140mm	FH3
180mm x 180mm x 130mm	FH4
180mm x 180mm x 170mm	FH5



LED 6" 14W Downlight



Features

- Daylight (6000K) LED's
- Rated life 30,000 hours
- Supplied with pre-wired driver
- Opal diffuser
- Ideal replacement for 2 x 18W PL downlights
- Beam angle 90°
- IP20
- 100-230V



Wattage	Dimensions	Cut-out	Void Depth	Lumen Output	Product Code
14W	189mmØ x 120mm	168mm	195mm	1000lm	B5010



LED 8" 22W Downlight



Features

- Daylight (6000K) LED's
- Rated life of 30,000 hours
- Supplied with pre-wired driver
- Opal diffuser
- Ideal replacement for 2 x 26W PL downlights
- Beam angle 90°
- IP20
- 100-230V



Wattage	Dimensions	Cut-out	Void Depth	Lumen Output	Product Code
22W	246mmØ x 153mm	215mm	225mm	1500lm	B5020



LED 15W Ceiling Light

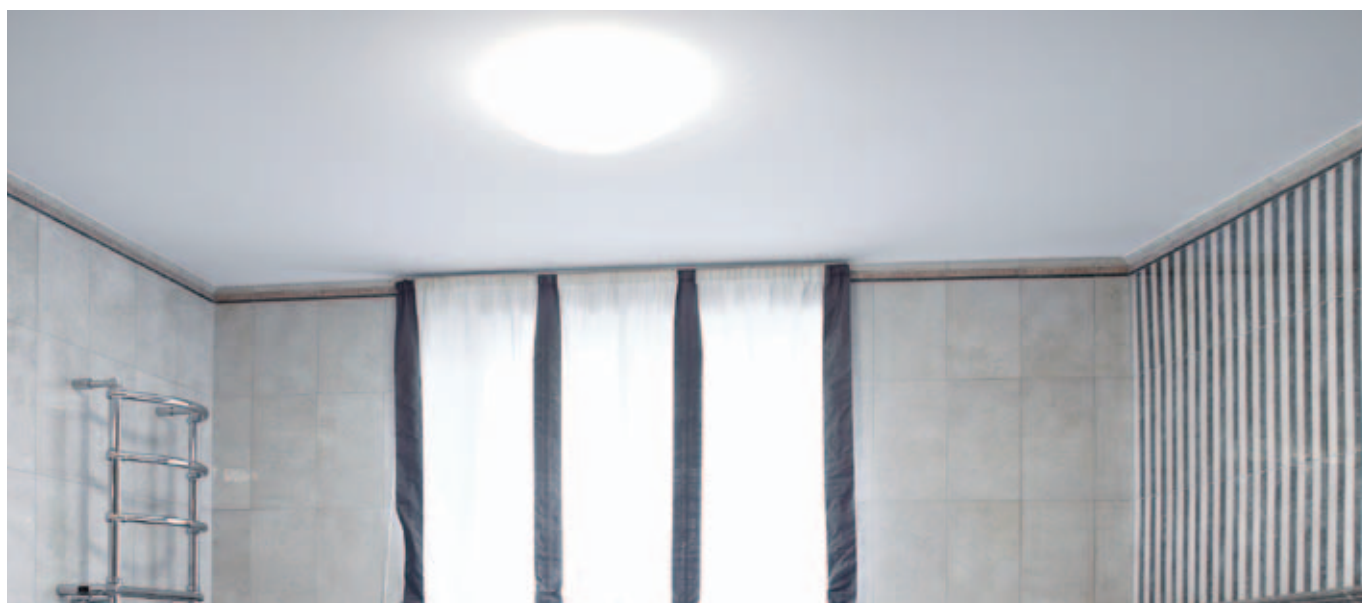


Features

- Daylight (6000K) LED's
- Rated life of 60,000 hours
- Integral driver – non dimmable
- Polycarbonate base with opal diffuser
- Supplied with white and chrome bezel
- Equivalent light output to 28W 2D luminaire
- 3 hour emergency version available
- IP44
- 100-230V



Wattage	Emergency	Dimensions	Lumen Output	Product Code
15W	-	320mmØ x 100mm	1400lm	B6010
15W	3 hours	320mmØ x 100mm	1400lm	B6020



LED 40W Ultra-Thin Panel Light



Features

- Daylight (6000K) LED's
- Rated life of 35,000 hours
- Complete with plug in driver
- Low profile design – only 3.8Kg
- Flicker free quick start – non dimmable
- Ideal replacement for modular luminaires
- 3 hour emergency version available
- Beam angle 120°
- IP20
- 100-230V



Wattage	Emergency	Dimensions	Lumen Output	Product Code
40W	-	595mm x 595mm x 12.5mm	3450lm	B7010
40W	3 hours	595mm x 595mm x 12.5mm	3450lm	B7020

Description	Product Code
Suspension Kit	B7030

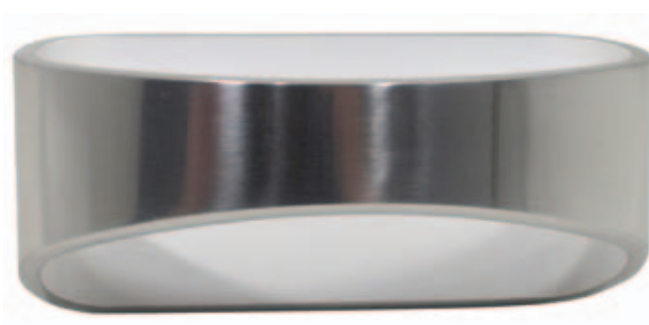


LED 6W Wall Lights



Features

- Warm White (3000K) LED's
- Rated life of 30,000 hours
- Integral driver
- Available in textured white or polished aluminium finishes
- 80mm x 170mm x 100mm (H x W x D)
- IP20
- 230V



Wattage	Finish	Lumen Output	Product Code
6W	Textured White	310lm	B8010
6W	Polished Aluminium	310lm	B8020

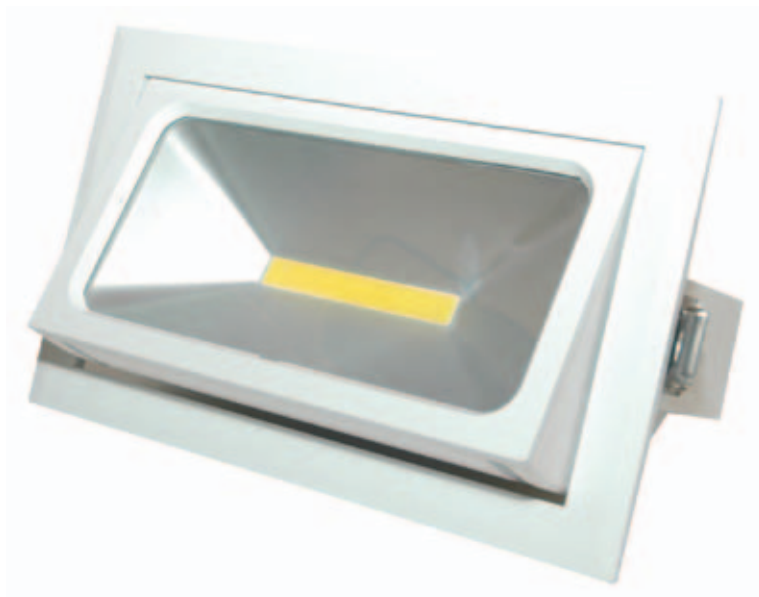


LED 35W Wall Wash



Features

- Cool White (4000K) LED
- Rated life of 35,000 hours
- Complete with plug in driver
- Ideal replacement for metal halide wall wash lights
- Recessed fitting
- Beam angle 110°
- IP20
- 230V



Wattage	Dimensions (L x W x D)	Cut-out	Lumen Output	Product Code
35W	235mm x 145mm x 116.5mm	205mm x 115mm	2800lm	B9010





Bathroom Products

Shaver Lights

36-38

Bathroom Products

39-40



LED 7W Shaver Light



Features

- Daylight (6000K) LED's
- Rated life of 30,000 hours
- Integral driver
- Pull cord operated
- 230V/115V dual voltage shaver socket
- Beam angle 120°
- Opal diffuser
- IP20
- 230V



Wattage	Dimensions (L x H x D)	Lumen Output	Product Code
7W	490mm x 58mm x 70mm	480lm	S5010



Low Energy 11W Shaver Light



Features

- Supplied with White (3500K) 11W PL lamp
- Available in white and chrome finishes
- Pull cord operated
- 230V/115V dual voltage shaver socket
- Opal diffuser
- IP20
- 230V



Wattage	Finish	Dimensions (L x H x D)	Product Code
11W	White	490mm x 58mm x 70mm	B70DW
11W	Chrome	490mm x 58mm x 70mm	B70DC



Incandescent 60W Shaver Light



Features

- Supplied with 284mm 60W incandescent striplight
- Pull cord operated
- 230V/115V dual voltage shaver socket
- Prismatic diffuser
- IP20
- 230V



Wattage

60W

Dimensions (L x H x D)

490mm x 58mm x 70mm

Product Code

B60BD



Dual Voltage Shaver Socket



Features

- 230V & 115V outlets
- Suitable for surface or flush mounting
- Minimum 47mm deep back box required
- IP20
- 230V



Description

Dual Voltage Shaver Socket

Product Code

SS1



Disabled Toilet Alarm Kit



Features

- Over door alarm indicator & sounder
- Main control panel
- Reset panel
- Ceiling pull cord alarm switch
- Disabled WC sticker
- IP20
- 230V



Description

Disabled Toilet Alarm Kit

Product Code

BBDTAK



Floodlighting

LED Floodlights	42-48
CFL Floodlights	49
Photocells	50-51
PIR Sensors	52
Brackets and Accessories	53
Discharge Floodlights	54-55



Slimline LED Floodlights – PIR



Features

- Energy efficient super bright LED – Daylight (6000K)
- Rated life of 50,000 hours
- Integral driver
- Complete with mounting bracket and 900mm flex
- PIR detection distance 6m
- PIR detection range 120°
- Die-cast aluminium housing
- Durable high quality paint – black finish
- IP65
- 110-230V



Wattage	Dimensions (L x W x H)	Beam Angle	Lumen Output	Product Code
10W	182mm x 171mm x 54mm	120°	700lm	N8011
30W	315mm x 248mm x 80mm	120°	2100lm	N8031
50W	395mm x 320mm x 110mm	120°	3500lm	N8041



Slimline LED Floodlights – Non-PIR



Features

- Energy efficient super bright LED – Daylight (6000K)
- Rated life of 50,000 hours
- Integral driver
- Complete with mounting bracket and 900mm flex
- Die-cast aluminium housing
- Durable high quality paint – black finish
- IP65
- 110-230V



Wattage	Dimensions (L x W x H)	Beam Angle	Lumen Output	Product Code
10W	182mm x 171mm x 54mm	120°	700lm	N8010
30W	315mm x 248mm x 80mm	120°	2100lm	N8030
50W	395mm x 320mm x 110mm	120°	3500lm	N8040



LED Floodlights – PIR



Features

- Energy efficient super bright LED – Daylight (6000K)
- Rated life of 50,000 hours
- Integral driver
- Complete with mounting bracket and 900mm flex
- PIR detection distance 8m-12m
- PIR detection range 120°
- Die-cast aluminium housing
- Durable high quality paint – black finish
- IP65
- 110-230V



Wattage	Dimensions (L x W x H)	Beam Angle	Lumen Output	Product Code
10W	135mm x 85mm x 175mm	100°	700lm	N7011
20W	135mm x 85mm x 175mm	100°	1400lm	N7021
30W	220mm x 120mm x 240mm	150°	2100lm	N7031



LED Floodlights – Non-PIR



Features

- Energy efficient super bright LED – Daylight (6000K)
- Rated life of 50,000 hours
- Integral driver
- Complete with mounting bracket and 900mm flex
- Die-cast aluminium housing
- Durable high quality paint – black finish
- IP65
- 110-230V



Wattage	Dimensions (L x W x H)	Beam Angle	Lumen Output	Product Code
10W	135mm x 85mm x 175mm	100°	700lm	N7010
20W	135mm x 85mm x 175mm	100°	1400lm	N7020
30W	220mm x 120mm x 240mm	150°	2100lm	N7030
50W	285mm x 235mm x 170mm	140°	3500lm	N7040



LED Floodlights – 80W & 100W



Features

- Energy efficient super bright LED – Daylight (6000K)
- Rated life of 50,000 hours
- Integral driver
- Complete with mounting bracket and 900mm flex
- Die-cast aluminium housing
- Durable high quality paint – black finish
- IP65
- 110-230V



Wattage	Dimensions (L x W x H)	Beam Angle	Lumen Output	Product Code
80W	400mm x 285mm x 120mm	120°	5600lm	N7050
100W	400mm x 285mm x 120mm	120°	6800lm	N7060

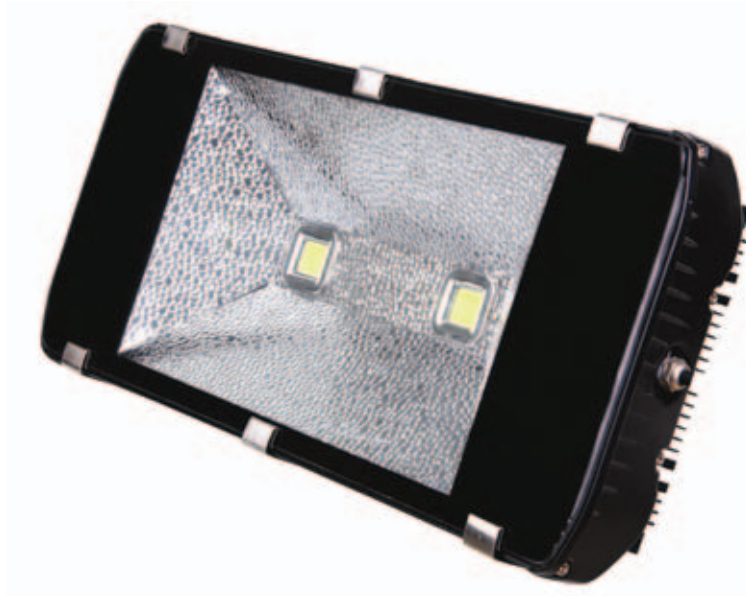


LED Tunnel Lights

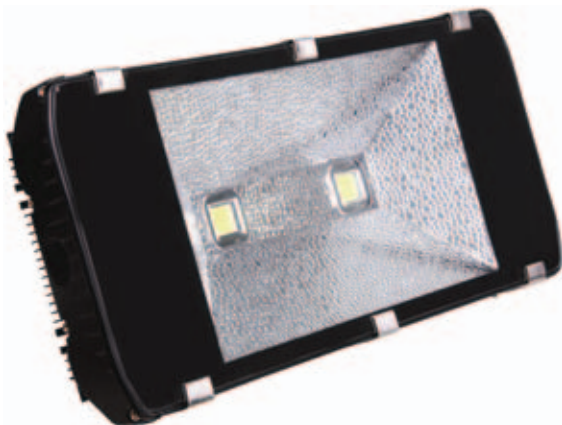


Features

- Energy efficient super bright LED – Daylight (6000K)
- Rated life of 50,000 hours
- Integral driver
- Complete with mounting bracket
- Can be used as a floodlight and as a low bay fitting
- Die-cast aluminium housing
- Durable high quality paint – black finish
- IP65
- 110-230V



Wattage	Replacement	Dimensions (L x W x H)	Beam Angle	Lumen Output	Product Code
100W	250W SON/MH	600mm x 280mm x 230mm	120°	7500lm	N9010
140W	350W SON/MH	600mm x 280mm x 230mm	120°	10500lm	N9020
160W	400W SON/MH	600mm x 280mm x 230mm	120°	12000lm	N9030



LED Floodlights – J5 Range



Features

- Energy efficient super bright LED – Daylight (6400K)
- Rated life of 25,000 hours
- Integral driver
- Available in single or twin head options
- Tilt and pan adjustable heads
- PIR detection distance 8-10m
- PIR detection range 140°
- Die-cast aluminium head with polycarbonate base
- Attractive dark grey finish
- 230V



Wattage	Dimensions (L x W x D)	PIR	Lumen Output	IP Rating	Product Code
10W	206mm x 90mm x 60mm	No	720lm	IP54	J5010
10W	238mm x 90mm x 80mm	Yes	720lm	IP44	J5011
20W	206mm x 198mm x 60mm	No	1440lm	IP54	J5020
20W	238mm x 198mm x 80mm	Yes	1440lm	IP44	J5021



CFL 36W Floodlights



Features

- Complete with 36W CFL lamp – Daylight (6000K)
- Lamp rated life of 6,000 hours
- Equivalent to 300W halogen lamp
- Integral ballast
- Available with PIR
- PIR detection distance up to 12m
- PIR detection range 180°
- IP44
- 230V



Wattage	PIR	Product Code	Replacement Lamp Code
36W	Yes	BBI3600A	BBI36WS
36W	No	BBI3600H	BBI36WS

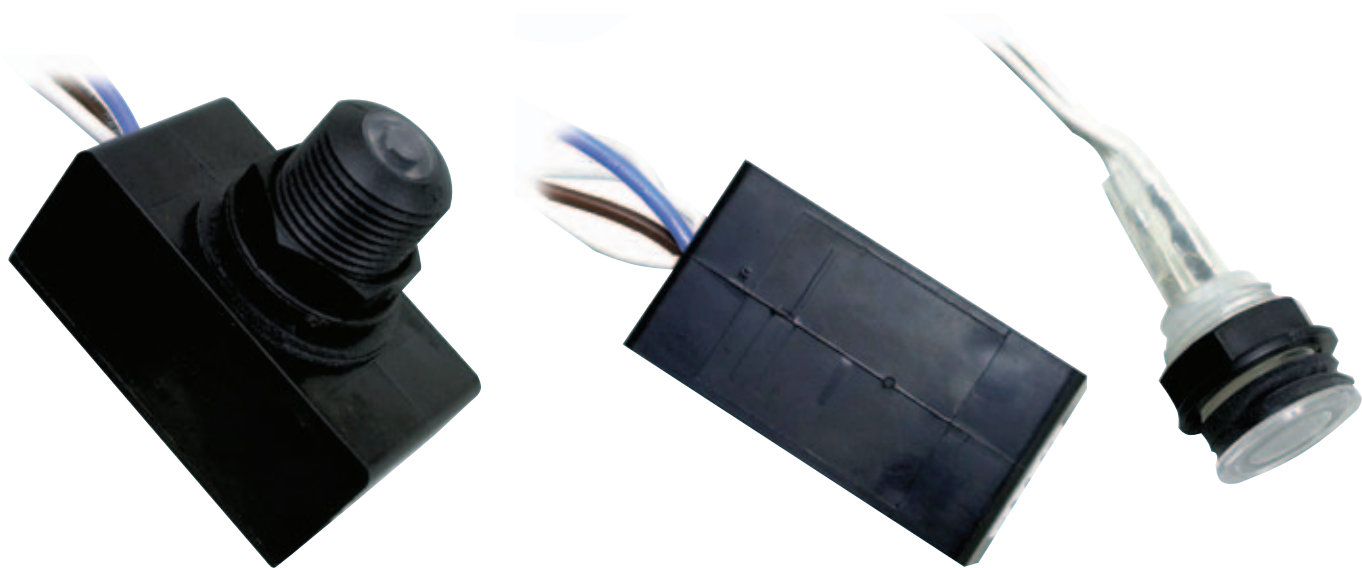


Miniature & Two Part Photocells



Features

- Electronic detector for dawn/dusk switching
- Suitable for use within a luminaire
- 70 lux switching point (on/off)
- Available as single unit or with remote head
- UV stabilised cover
- IP65
- 230V



Wattage	Description	Brand	Dimensions (L x W x H)	Lens Cutout	Product Code
2000W	Miniature Photocell	Royce Thompson	57mm x 31mm x 25mm	20mmØ	PS41
1000W	Miniature Photocell	Brackenheath	52.5mm x 42mm x 29mm	16mmØ	N2011
2000W	Two Part Photocell	Royce Thompson	57mm x 31mm x 25mm	20mmØ	PS41R
1000W	Two Part Photocell	Brackenheath	45mm x 45mm x 30mm	16mmØ	N2012



Electronic Photocell Kits



Features

- Electronic detector for dawn/dusk switching
- Stand alone photocell kit
- 70 lux switch on, 105 lux switch off
- Photocell head and base available separately
- UV stabilised cover
- IP65
- 230V



Wattage	Description	Brand	Product Code
2000W	Full Kit	Royce Thompson	PS20
1000W	Full Kit	Brackenheath	N2013
2000W	Head Only	Royce Thompson	PS21
1000W	Head Only	Brackenheath	N2014
-	Base Only	Brackenheath	N2015



Passive Infra-Red Sensors



Features

- Senses movement and presence of people
- Available in white or black finish
- Wall or ceiling mounted
- Detection distance up to 12m
- Detection range up to 180°
- Manual override
- IP44
- 230V



Wattage	Colour	Product Code
1000W	White	BPW3
1000W	Black	BPW3B



Floodlight Brackets & Spike



Features

- Steel construction
- Brackets have durable high quality black paint
- Spike is zinc coated
- Suitable for use with LED floodlights (up to 30W), CFL floodlights and die-cast halogen floodlights
- Bracket fixings 48-75mm



BTHB1



BTHB2

Description	Movement	Length	Product Code
Fixed Corner Bracket	Fixed	-	BTHB1
Swivel Corner Bracket	270°	75mm	BTHB2
Swivel Wall Bracket	180°	75mm	BTHB3
Floodlight Spike	Fixed	310mm	BTHB5



BTHB3



BTHB5

70W SON & MH Floodlights



Features

- High quality die-cast bodies
- Easy maintenance with front cover quick release clips
- Highly polished aluminium reflectors
- Toughened front glass
- Complete with mounting bracket
- Includes European control gear
- Fitting only
- IP65
- 230V



Wattage	Lamp Type	Lampholder	Product Code	Lamp Code
70W	SON	E27	CF2170	SONE70I (Internal Ignitor)
70W	MH	RX7	CF2171	MHD70

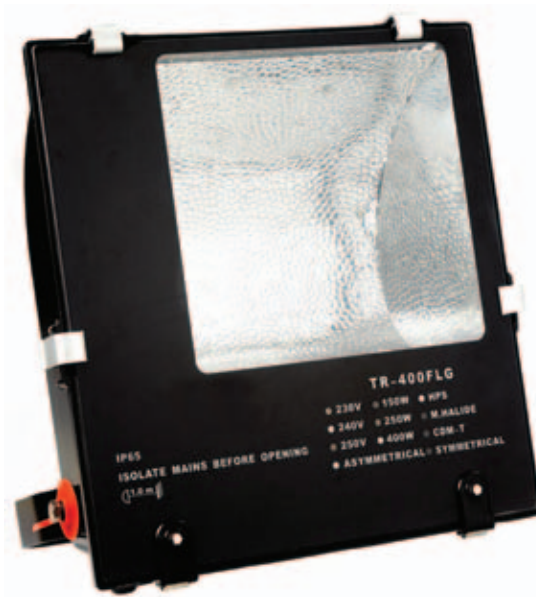


150W-400W SON & MH Floodlights



Features

- High quality die-cast bodies
- Easy maintenance with front cover quick release clips
- Highly polished aluminium reflectors
- Toughened front glass
- Complete with mounting bracket
- Includes European dual control gear – operates both SON and MH lamps
- Fitting only
- IP65
- 230V



Wattage	Lamp Type	Lampholder	Product Code	Lamp Code
150W	SON or MH	E40	CF2172	SONT150T or MHT150T
250W	SON or MH	E40	CF2173	SONT250T or MHT250T
400W	SON or MH	E40	CF2174	SONT400T or MHT400T





HID Retrofit Lamps

LED360 – IP64 Range

58-64

LED360 – IP20 Range

65-66



LED360

The **Brackenheath** LED360 is a unique range of lamps designed to replace metal halide and high pressure sodium lamps. The LED360 offers energy savings of up to 80%, whilst increasing the rated life up to 50,000 hours.

Available in IP64 and IP20 versions, the LED360 lamps are ideal for use in high bay and low bay light fittings, street lighting and lamp posts, floodlights and petrol station canopy lights.



IP64 Version Waterproof & Dustproof

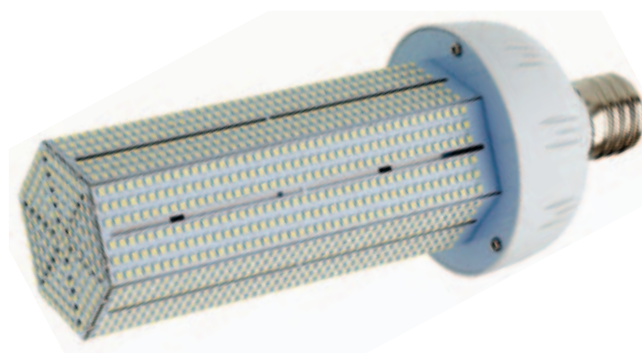
The LED strips on the LED360 lamp are rated to IP64 using a unique polycarbonate lens. This also results in no loss of lumen output caused by the LED's being affected by dust.

Unique heat sink design

The heat sink in the IP64 LED360 adopts a unique radiator design manufactured from high grade aluminium, allowing the heat to dissipate effectively without the need for a cooling fan. This design allows the lamp to be used in both open and enclosed fittings.

IP20 Version

The IP20 range is suitable for all indoor lighting applications with open fittings, and all versions are complete with an integral driver. The 60W, 80W and 100W lamps also incorporate a special cooling fan in the base to aid heat dissipation.



LED360 27W – IP64



Features

- High output Daylight (6500K) LED's
- Rated life of 50,000 hours
- 360° light output
- Integral driver
- Instant start and restart – can be used with PIR sensors
- Designed to replace a 70W discharge lamp
- LED's rated to IP64
- 85-265V



Wattage	Dimensions	Lamp Base	Beam Angle	Lumen Output	Product Code
27W	92.8mmØ x 193mm	E27	360°	2900lm	R5040



LED360 36W – IP64



Features

- High output Daylight (6500K) LED's
- Rated life of 50,000 hours
- 360° light output
- Integral driver
- Instant start and restart – can be used with PIR sensors
- Designed to replace a 100W-150W discharge lamp
- LED's rated to IP64
- 85-265V



Wattage	Dimensions	Lamp Base	Beam Angle	Lumen Output	Product Code
36W	92.8mmØ x 242mm	E40	360°	3800lm	R5050



LED360 54W – IP64



Features

- High output Daylight (6500K) LED's
- Rated life of 50,000 hours
- 360° light output
- Integral driver
- Instant start and restart – can be used with PIR sensors
- Designed to replace a 150W-200W discharge lamp
- LED's rated to IP64
- 85-265V



Wattage	Dimensions	Lamp Base	Beam Angle	Lumen Output	Product Code
54W	92.8mmØ x 273mm	E40	360°	5600lm	R5060



LED360 60W – IP64



Features

- High output Daylight (6500K) LED's
- Rated life of 50,000 hours
- 360° light output
- Supplied with driver
- Instant start and restart – can be used with PIR sensors
- Designed to replace a 200W-250W discharge lamp
- LED's rated to IP64
- 85-265V



Wattage	Dimensions	Lamp Base	Beam Angle	Lumen Output	Product Code
60W	119.5mmØ x 261mm	E40	360°	6460lm	R5070



LED360 80W – IP64



Features

- High output Daylight (6500K) LED's
- Rated life of 50,000 hours
- 360° light output
- Supplied with driver
- Instant start and restart – can be used with PIR sensors
- Designed to replace a 300W discharge lamp
- LED's rated to IP64
- 85-265V



Wattage	Dimensions	Lamp Base	Beam Angle	Lumen Output	Product Code
80W	119.5mmØ x 300mm	E40	360°	8000lm	R5080



LED360 100W – IP64

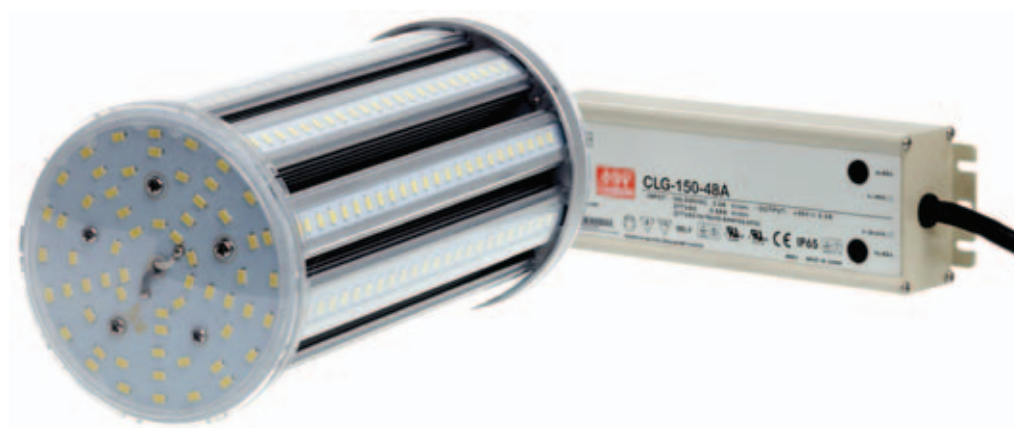


Features

- High output Daylight (6500K) LED's
- Rated life of 50,000 hours
- 360° light output
- Supplied with driver
- Instant start and restart – can be used with PIR sensors
- Designed to replace a 400W discharge lamp
- LED's rated to IP64
- 85-265V



Wattage	Dimensions	Lamp Base	Beam Angle	Lumen Output	Product Code
100W	119.5mmØ x 345mm	E40	360°	10080lm	R5090

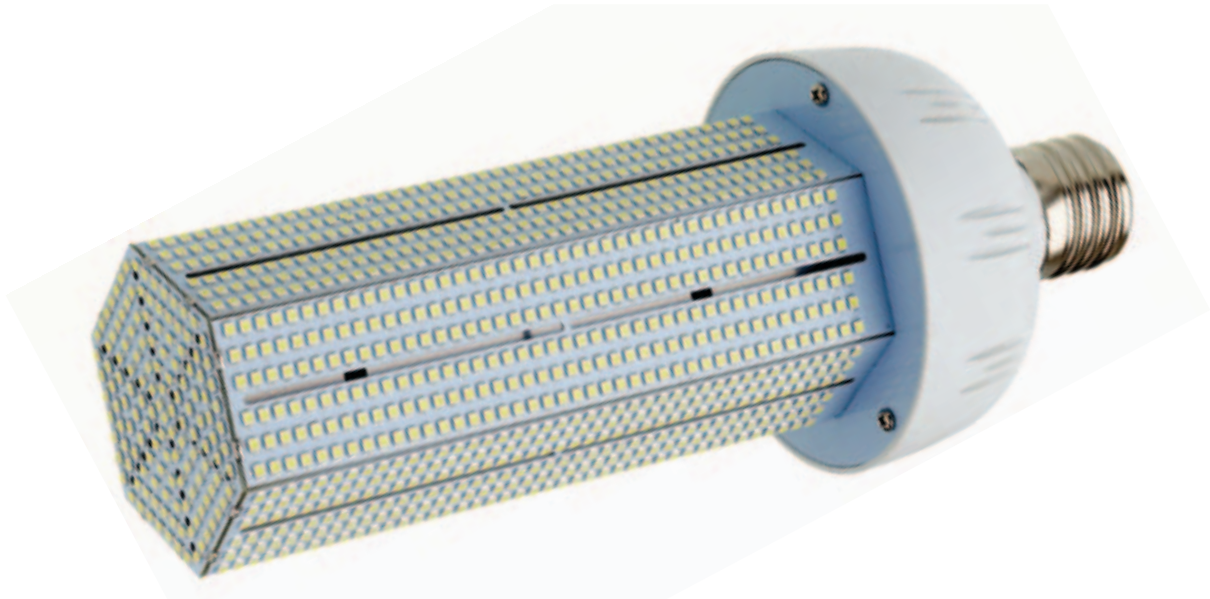


LED360 30W & 40W – IP20



Features

- High output Daylight (6000K) LED's
- Rated life of 35,000 hours
- 360° light output
- Integral driver
- Instant start and restart – can be used with PIR sensors
- LED's rated to IP20
- 100-300V



Wattage	Replacement	Dimensions	Lamp Base	Beam Angle	Lumen Output	Product Code
30W	70W	94mmØ x 194mm	E27	360°	3100lm	R6050
40W	100-150W	94mmØ x 236mm	E40	360°	4200lm	R6060



LED360 60W, 80W & 100W – IP20



Features

- High output Daylight (6000K) LED's
- Rated life of 35,000 hours
- 360° light output
- Integral driver
- Lamps incorporate a cooling fan to aid heat dissipation
- Instant start and restart – can be used with PIR sensors
- LED's rated to IP20
- 100-300V



Wattage	Replacement	Dimensions	Lamp Base	Beam Angle	Lumen Output	Product Code
60W	200-250W	94mmØ x 287mm	E40	360°	6500lm	R6070
80W	300W	118mmØ x 270mm	E40	360°	9000lm	R6080
100W	400W	118mmØ x 306mm	E40	360°	12000lm	R6090



Weatherproof Luminaires

LED Luminaires 68

Fluorescent Luminaires 69-70



LED T8 Tubes & Luminaires



Features

- Daylight (6000K) LED tubes
- Rated life of 40,000 hours
- Fittings supplied with LED T8 tubes
- Available in 2ft twin & 5ft single sizes
- Polycarbonate base, diffuser and clips
- LED T8 tubes available separately
- Stainless steel clips available – SSMC
- Beam angle 120°
- IP65
- 110-230V



Wattage	Description	Length	Width	Lumen Output	Product Code	Replacement Lamp Code
2 x 10W	Twin	2ft	155mm	1800lm	CRL6210DL	TLED810600
1 x 25W	Single	5ft	100mm	2400lm	CRL6125DL	TLED825600



T5 Luminaires



Features

- Available in 2ft, 4ft and 5ft lengths
- Polycarbonate base, diffuser and clips
- High frequency ballast
- Ceiling and wall mounted
- Includes mounting brackets and suspension eyes
- Requires T5 fluorescent lamps
- Stainless steel clips available – SSMC
- 3 hour emergency versions available
- IP65
- 230V



Wattage	Description	Emergency	Length	Width	Product Code
14W	Single	-	2ft	60mm	CRL5128/N
14W	Twin	-	2ft	100mm	CRL5228/N
28W	Single	-	4ft	60mm	CRL5136/N
28W	Single	3 hours	4ft	60mm	CRL5136/E
28W	Twin	-	4ft	100mm	CRL5236/N
28W	Twin	3 hours	4ft	100mm	CRL5236/E
35W	Single	-	5ft	60mm	CRL5158/N
35W	Single	3 hours	5ft	60mm	CRL5158/E
35W	Twin	-	5ft	100mm	CRL5258/N
35W	Twin	3 hours	5ft	100mm	CRL5258/E
49W	Single	-	5ft	60mm	CRL5149/N
49W	Single	3 hours	5ft	60mm	CRL5149/E
49W	Twin	-	5ft	100mm	CRL5249/N
49W	Twin	3 hours	5ft	100mm	CRL5249/E

T8 Luminaires



Features

- Available in 2ft, 4ft, 5ft and 6ft lengths
- Polycarbonate base and diffuser
- High frequency and switch start options
- Ceiling and wall mounted
- Includes mounting brackets and suspension eyes
- Requires T8 fluorescent lamps
- Includes polycarbonate and stainless steel clips
- 3 hour emergency versions available
- IP65
- 230V



Wattage	Description	Emergency	Length	Width	High Frequency Product Code	Switch Start Product Code
18W	Single	-	2ft	100mm	CRL1118A	CRL118A
18W	Twin	-	2ft	155mm	CRL1218A	CRL218A
36W	Single	-	4ft	100mm	CRL1136A	CRL136A
36W	Single	3 hours	4ft	100mm	CRL1136EA	CRL136EA
36W	Twin	-	4ft	155mm	CRL1236A	CRL236A
36W	Twin	3 hours	4ft	155mm	CRL1236EA	CRL236EA
58W	Single	-	5ft	100mm	CRL1158A	CRL158A
58W	Single	3 hours	5ft	100mm	CRL1158EA	CRL158EA
58W	Twin	-	5ft	155mm	CRL1258A	CRL258A
58W	Twin	3 hours	5ft	155mm	CRL1258EA	CRL258EA
70W	Single	-	5ft	100mm	CRL1170A	CRL170A
70W	Twin	-	5ft	155mm	CRL1270A	CRL270A

Emergency Lighting

Emergency Lighting

72-76



LED 3W Emergency Bulkhead



Features

- Impact resistant polycarbonate base and diffuser
- Ni-Cad batteries
- Includes legend kit
- 3 hour emergency duration
- Supplied maintained and can be wired non-maintained
- IP65
- 230V



Wattage	Emergency	Dimensions (L x W x D)	Product Code
3W	3 hours	350mm x 115mm x 55mm	E9300



T5 8W Emergency Bulkhead



Features

- Supplied with Cool White (4000K) T5 8W lamp
- Impact resistant polycarbonate base and diffuser
- Ni-Cad batteries
- Legend kit available separately – E8305
- 3 hour emergency duration
- Supplied maintained and can be wired non-maintained
- IP65
- 230V



Wattage	Emergency	Dimensions (L x W x D)	Product Code
8W	3 hours	365mm x 115mm x 90mm	E8230

Description	Product Code
Legend Kit	E8305



LED 3W Emergency Exit Box



Features

- Durable steel body with polycarbonate screen
- Ni-Cad batteries
- Supplied with running legend going down
- 4 hour emergency duration
- Supplied maintained and can be wired non-maintained
- IP20
- 230V



Wattage	Emergency	Dimensions (L x H x D)	Product Code
3W	4 hours	420mm x 200mm x 60mm	E9100



LED 9W Twin Spot



Features

- Super bright 120pc LED – White (3500K)
- Durable polycarbonate body with adjustable heads
- Inbuilt LED indicators to show lamp status
- Inbuilt sounder to indicate failure
- Automatic self test function
- 3 hour emergency duration
- IP65
- 230V



Wattage	Emergency	Dimensions (L x H x D)	Lumen Output	Product Code
9W	3 hours	300mm x 295mm x 75mm	340lm	E9200





Bulkheads and Lanterns

Round Bulkhead	78-81
Brick Lights	82-83
Lanterns	84-85
Brick Bulkhead	86-87



LED 18W Decorative Bulkhead



Features

- Daylight (6000K) LED's
- Rated life of 60,000 hours
- Integral driver – non dimmable
- Die-cast body with opal diffuser
- Equivalent light output to 28W 2D luminaire
- 3 hour emergency version available
- IP65
- 100-230V



Wattage	Emergency	Dimensions	Lumen Output	Product Code
18W	-	350mmØ x 130mm	1400lm	H1010
18W	3 hours	350mmØ x 130mm	1400lm	H1020



LED 15W Amenity Bulkhead



Features

- Daylight (6000K) LED's
- Rated life of 60,000 hours
- Integral driver – non dimmable
- Polycarbonate white base and opal diffuser
- Equivalent light output to 28W 2D luminaire
- 3 hour emergency version available
- IP65
- 100-230V



Wattage	Emergency	Dimensions	Lumen Output	Product Code
15W	-	270mmØ x 85mm	1400lm	H2010
15W	3 hours	270mmØ x 85mm	1400lm	H2020



2D 16W Amenity Bulkhead



Features

- Supplied with White (3500K) 2D 16W lamp
- Polycarbonate base and diffuser
- Available with black or white base
- Black base version complete with prismatic diffuser
- White base version available with opal or prismatic diffuser
- IP65
- 230V



Wattage	Description	Dimensions	Product Code	Replacement Lamp Code
16W	White/Opal	200mmØ x 80mm	OBR16WO	LA2D216350
16W	White/Prismatic	200mmØ x 80mm	OBR16WP	LA2D216350
16W	Black/Prismatic	200mmØ x 80mm	OBR16BP	LA2D216350



2D 28W Amenity Bulkhead



Features

- Supplied with White (3500K) 2D 28W lamp
- Polycarbonate base and diffuser
- Available with black base and prismatic diffuser or white base and opal diffuser
- 3 hour emergency gear tray available separately – M1228EM
- IP65
- 230V



Wattage	Description	Dimensions	Product Code	Replacement Lamp Code
28W	White/Opal	280mmØ x 80mm	OBR28WO	LA2D428350
28W	Black/Prismatic	280mmØ x 80mm	OBR28BP	LA2D428350

Description	Product Code
3 hour emergency gear tray	M1228EM



LED 2W Brick Light



Features

- Daylight (6000K) LED's
- Rated life of 25,000 hours
- Integral driver
- Stainless steel bezel and polycarbonate body
- Recessed fitting – designed to fit in place of a brick
- Beam angle 120°
- IP65
- 230V



Wattage	Dimensions (L x H x D)	Lumen Output	Product Code
2W	198mm x 74mm x 65mm	120lm	H3010



Brick Lights – CFL and Incandescent



Features

- Black die-cast aluminium body
- Supplied with clear cover and grille
- CFL version requires 9W PL lamp G23
- Incandescent version requires 40W E27 lamp
- Recessed fitting – designed to fit in place of a brick
- IP44
- 230V



Wattage	Lampholder	Dimensions (L x H x D)	Product Code
9W	G23	235mm x 100mm x 85mm	R12B
40W	E27	235mm x 100mm x 85mm	R01B



LED 7W Half Lantern



Features

- Daylight (6000K) LED's
- Rated life of 30,000 hours
- Available with PIR
- Integral driver
- Black polycarbonate body with opal diffusers
- PIR detection distance up to 8m
- PIR detection range 100°
- IP44
- 230V



Wattage	PIR	Dimensions (H x W x D)	Lumen Output	Product Code
7W	No	362mm x 175mm x 100mm	650lm	H4010
7W	Yes	362mm x 175mm x 100mm	650lm	H4011



LED 7W Full Lantern



Features

- Daylight (6000K) LED's
- Rated life of 30,000 hours
- Available with PIR
- Integral driver
- Black polycarbonate body with opal diffusers
- PIR detection distance up to 8m
- PIR detection range 100°
- IP44
- 230V



Wattage	PIR	Dimensions (H x W x D)	Lumen Output	Product Code
7W	No	370mm x 205mm x 210mm	650lm	H4020
7W	Yes	370mm x 205mm x 210mm	650lm	H4021



LED 4W Brick Bulkhead – PIR



Features

- Daylight (6000K) LED's
- Integral driver
- Black polycarbonate body with opal diffuser
- PIR detection distance up to 10m
- PIR detection range 110°
- IP44
- 230V



Finish

Dimensions (L x W x D)

Product Code

4W

265mm x 110mm x 120mm

H5010



LED 4W Brick Bulkhead – Photocell

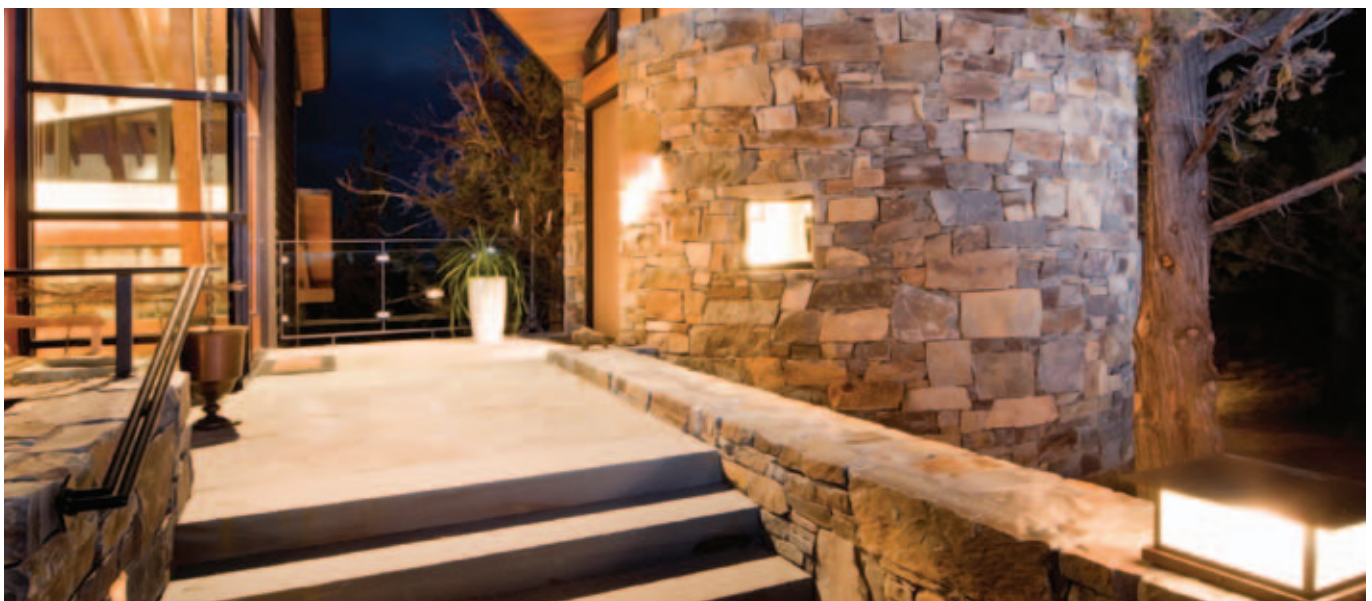


Features

- Daylight (6000K) LED's
- Integral driver
- Black polycarbonate body with opal diffuser
- IP44
- 230V



Finish	Dimensions (L x W x D)	Product Code
4W	265mm x 110mm x 120mm	H5020





Garden Lighting

Spike Lights	90-93
Stainless Steel Range	94-99
PAR38 Lights	100-101



LED 9W Garden Light



Features

- 3 x 3W White (3500K) LED's
- Rated life of 50,000 hours
- Integral driver
- Black die-cast aluminium body with toughened glass lens
- Beam angle 120°
- IP65
- 230V



Wattage	Dimensions	Spike Length	Lumen Output	Product Code
9W	95mmØ x 85mm	160mm	850lm	G1010



LED 3W Garden Light



Features

- 3 x 1W White (3500K) LED's
- Rated life of 50,000 hours
- Integral driver
- Black die-cast aluminium body with toughened glass lens
- Beam angle 120°
- IP65
- 230V



Wattage	Dimensions	Spike Length	Lumen Output	Product Code
3W	95mmØ x 140mm	170mm	285lm	G1020



Halogen Garden Lights



Features

- Available with GU10 or MR16 lampholder
- MR16 version supplied with integral low voltage transformer
- Durable black polyamide housing
- Complete with 3m lead, spike and wall mounting bracket
- IP66
- 230V



Wattage	Lampholder	Dimensions	Spike Length	Product Code
50W	MR16	90mmØ x 135mm	130mm	GF520
50W	GU10	90mmØ x 135mm	130mm	GF523



IP68 Garden Light



Features

- Suitable for use in water fountains, ponds and swimming pools
- MR16 lampholder
- Requires 12V supply via suitable transformer
- Durable black polyamide housing
- Complete with 3m lead, spike and wall mounting bracket
- IP68
- 12V



Wattage	Lampholder	Dimensions (L x H x D)	Spike Length	Product Code
50W	MR16	90mmØ x 95mm	130mm	GF51



LED 3W Stainless Steel Garden Light



Features

- 3 x 1W White (3500K) LED's
- Rated life of 50,000 hours
- Integral driver
- Black die-cast aluminium body with stainless steel bezel and toughened glass lens
- Beam angle 120°
- IP65
- 230V



Wattage	Dimensions	Spike Length	Lumen Output	Product Code
3W	98mmØ x 100mm	170mm	285lm	G1030



Stainless Steel Walkover Lights



Features

- Supplied with GU10 and MR16 lampholders
- Available in round or square versions
- Suitable for use with halogen and LED lamps
- Includes thermoplastic sleeve for recessed mounting (85mmØ x 165mm)
- Two cable glands for loop in/out wiring
- IP67
- 12V or 230V



Wattage	Description	Dimensions (L x W x D)	Product Code
50W	Round	100mmØ x 135mm	WOL100
50W	Square	100mm x 100mm x 135mm	WSL100



Stainless Steel Single Wall Lights



Features

- GU10 lampholder
- Available in fixed and adjustable versions
- Suitable for use with halogen and long body CFL and LED lamps
- Toughened glass lens
- IP65
- 230V



Wattage	Description	Dimensions (L x W x D)	Product Code
50W	Fixed	140mm x 75mm x 90mm	GF621
50W	Adjustable	165mm x 75mm x 90mm	GF623



Stainless Steel Up and Down Light



Features

- Two GU10 lampholders
- Suitable for use with halogen and long body CFL and LED lamps
- Toughened glass lens
- IP65
- 230V



Wattage

50W

Dimensions (L x W x D)

200mm x 75mm x 90mm

Product Code

GF622



Stainless Steel Garden Light

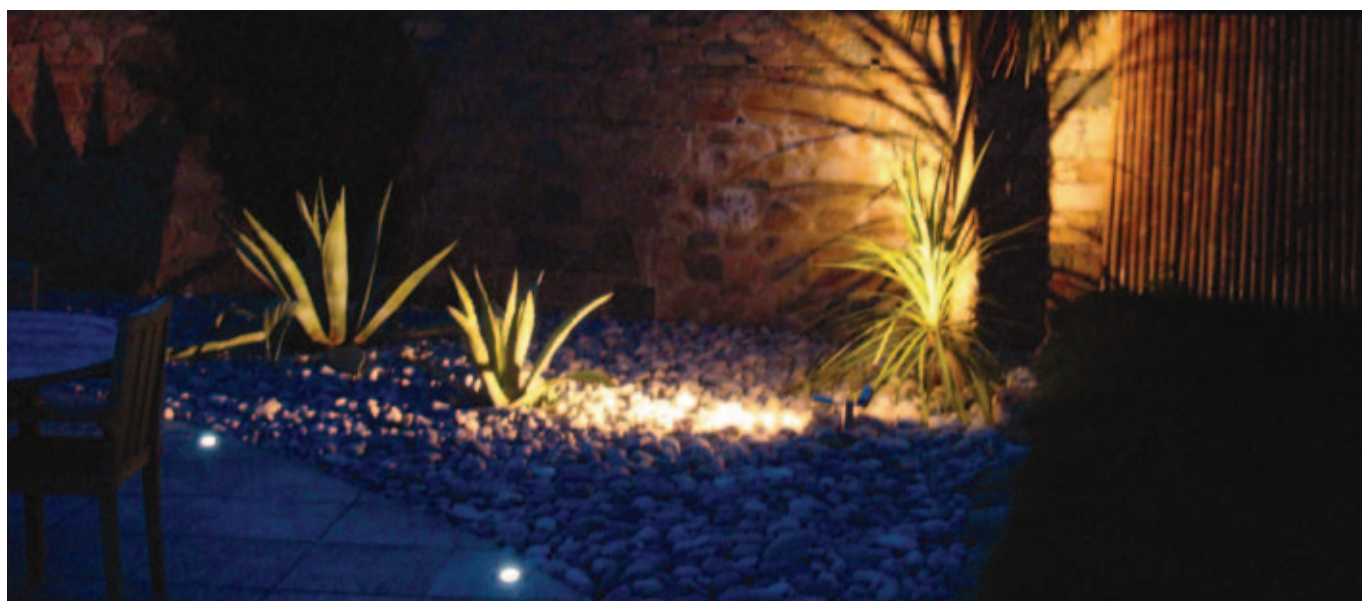


Features

- GU10 lampholder
- Complete with spike and 2m lead
- Spike length 200mm
- Suitable for use with halogen and long body CFL and LED lamps
- Toughened glass lens
- IP65
- 230V



Wattage	Dimensions	Spike Length	Product Code
50W	60mmØ x 115mm	200mm	GF624



LED 3W Silver Garden Light



Features

- 3 x 1W White (3500K) LED's
- Integral driver
- Silver high-pure aluminium body with toughened glass lens
- Beam angle 45°
- IP44
- 230V



Wattage	Dimensions	Spike Length	Lumen Output	Product Code
3W	64mmØ x 200mm	171mm	300lm	GF10LW



PAR38 Wall Lights



Features

- Durable black polycarbonate body
- Available in single or twin head versions
- Twin head version includes PIR
- Complete with ES lampholder and gasket
- PIR detection distance 15m
- PIR detection range 180°
- Supplied without lamps
- 230V



Wattage	Description	Product Code
120W	Single Non-PIR	GF2B
120W	Twin PIR	BSL2



PAR38 Garden Lights



Features

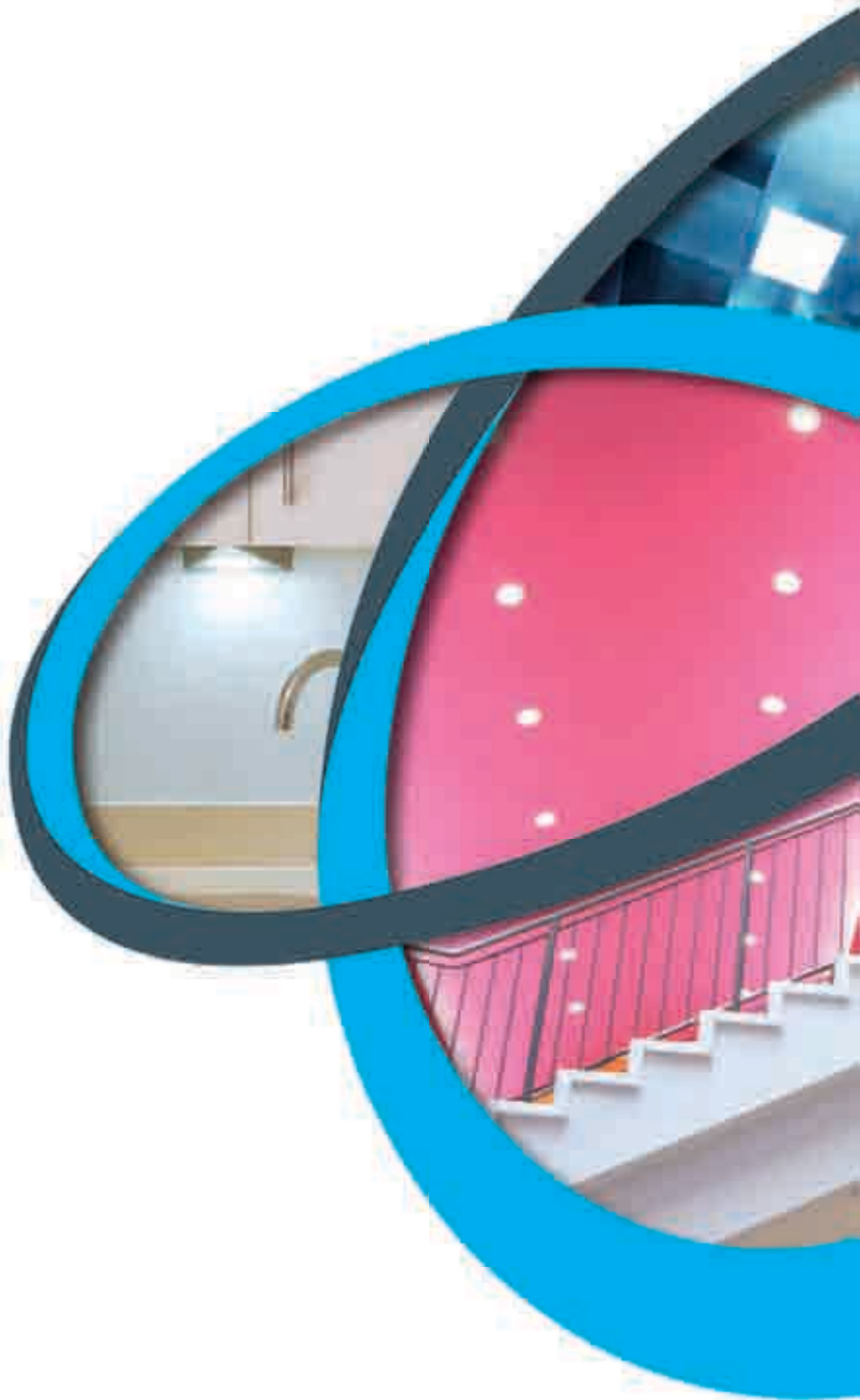
- Durable black polycarbonate body
- Available in single or twin head versions
- Complete with ES lampholder and gasket
- Supplied without lamps
- IP54
- 230V



Wattage	Description	Product Code
120W	Single	GF1B
120W	Twin	GF3B



Code	Page	Code	Page	Code	Page	Code	Page	Code	Page
A		BPW3B	52	CRL5236/E	69	GF520	92	N7010	45
A2010CH	24	BSL2	100	CRL5236/N	69	GF523	92	N7011	44
A2010SC	24	BTHB1	53	CRL5249/E	69	GF621	96	N7020	45
A2010WH	24	BTHB2	53	CRL5249/N	69	GF622	97	N7021	44
A2011CH	24	BTHB3	53	CRL5258/E	69	GF623	96	N7030	45
A2011SC	24	BTHB5	53	CRL5258/N	69	GF624	98	N7031	44
A2011WH	24	C		CRL6125DL	68	H		N7040	45
A2012CH	24	C21A	8	CRL6210DL	68	H1010	78	N7050	46
A2012SC	24	C22A	8	D		H1020	78	N7060	46
A2012WH	24	C23A	8	D06A	9	H2010	79	N8010	43
A2020CH	25	C24A	8	D08A	9	H2020	79	N8011	42
A2020SC	25	C25A	8	D1000A	6	H3010	82	N8030	43
A2020WH	25	C26A	8	D14A	9	H4010	84	N8031	42
A2021CH	25	C27A	8	D21A	9	H4011	84	N8040	43
A2021SC	25	C28A	8	D2201	6	H4020	85	N8041	42
A2021WH	25	C29A	8	D2202	6	H4021	85	N9010	47
A2022CH	25	C31A	8	D2203	6	H5010	86	N9020	47
A2022SC	25	C32A	8	D2204	6	H5020	87	N9030	47
A2022WH	25	C33A	8	D2205	6	J		O	
A2030CH	23	C34A	8	D2301	7	J5010	48	OBR16BP	80
A2030SC	23	C35A	8	D2302	7	J5011	48	OBR16WO	80
A2030WH	23	C36A	8	D2303	7	J5020	48	OBR16WP	80
A2032CH	23	CF2170	54	D2311	7	J5021	48	OBR28BP	81
A2032SC	23	CF2171	54	D2312	7	L		OBR28WO	81
A2032WH	23	CF2172	55	D2313	7	L0001A	10	P	
A3010CH	22	CF2173	55	D2341	7	L0002A	10	PS20	51
A3010SC	22	CF2174	55	D2342	7	L0003A	10	PS21	51
A3010WH	22	CRL1118A	70	D2343	7	L0004A	10	PS41	50
A3020CH	22	CRL1136A	70	D250A	6	L0005A	10	PS41R	50
A3020SC	22	CRL1136EA	70	D28A	9	L0007A	10	R	
A3020WH	22	CRL1158A	70	D35A	9	L0009A	10	R01B	83
A3071WH	11	CRL1158EA	70	D500A	6	L0011A	10	R12B	83
A3072WH	11	CRL1170A	70	DT14A	9	L0243A	10	R5040	59
B		CRL118A	70	DT21A	9	L0320A	10	R5050	60
B3010	26	CRL1218A	70	DT28A	9	L0473A	10	R5060	61
B3020	26	CRL1236A	70	DT35A	9	L0548A	10	R5070	62
B3030	26	CRL1236EA	70	DT6A	9	L0625A	10	R5080	63
B4010	26	CRL1258A	70	DT8A	9	L0930A	10	R5090	64
B4020	26	CRL1258EA	70	E		L1230A	10	R6050	65
B5010	28	CRL1270A	70	E8230	73	LA2D216350	80	R6060	65
B5020	29	CRL136A	70	E8305	73	LA2D428350	81	R6070	66
B6010	30	CRL136EA	70	E9100	74	M		R6080	66
B6020	30	CRL158A	70	E9200	75	M1228EM	81	R6090	66
B60BD	38	CRL158EA	70	E9300	72	M37	16	R63	25
B62	17	CRL170A	70	F		M4010	12	S	
B64	17	CRL218A	70	FH0	27	M4020	13	S5010	36
B7010	31	CRL236A	70	FH2	27	M4030	14	SONE70I	54
B7020	31	CRL236EA	70	FH3	27	M41	16	SONT150T	55
B7030	31	CRL258A	70	FH4	27	M43 CFL	15	SONT250T	55
B70DC	37	CRL258EA	70	FH5	27	MHD70	54	SONT400T	55
B70DW	37	CRL270A	70	G		MHT150T	55	SS1	39
B8010	32	CRL5128/N	69	G1010	90	MHT250T	55	T	
B8020	32	CRL5136/E	69	G1020	91	MHT400T	55	TLED810600	68
B9010	33	CRL5136/N	69	G1030	94	N		TLED825600	68
BBDTAK	40	CRL5149/E	69	GF10LW	99	N2011	50	W	
BBI3600A	49	CRL5149/N	69	GF1B	101	N2012	50	WOL100	95
BBI3600H	49	CRL5158/E	69	GF2B	100	N2013	51	WSL100	95
BBI36WS	49	CRL5158/N	69	GF3B	101	N2014	51		
BPW3	52	CRL5228/N	69	GF51	93	N2015	51		





Brackenheath 

Kingsway House
2-8 Laporte Way, Luton
Bedfordshire, England
LU4 8RJ

Telephone: +44 (0) 1582 544 590
Fax: +44 (0) 1582 544 591
email: sales@brackenheath.co.uk
www.brackenheath.co.uk