

## CFD HARDWARE BY CFD USERS, FOR CFD USERS

**TotalSim** have developed a custom CFD hardware solution through their consultancy business and are offering that solution to other CFD users.

**TotalSim** are constantly revising their CFD recipe to ensure that the solution is:  
**cost effective, energy efficient and fast.**

**The latest generation is no exception.**

The latest recipe is **rack mounted**, which means it is easily scalable from **6 to 192 nodes** or more.

### LIKE EVERYTHING AT TOTALSIM OUR HARDWARE PHILOSOPHY IS OPEN.

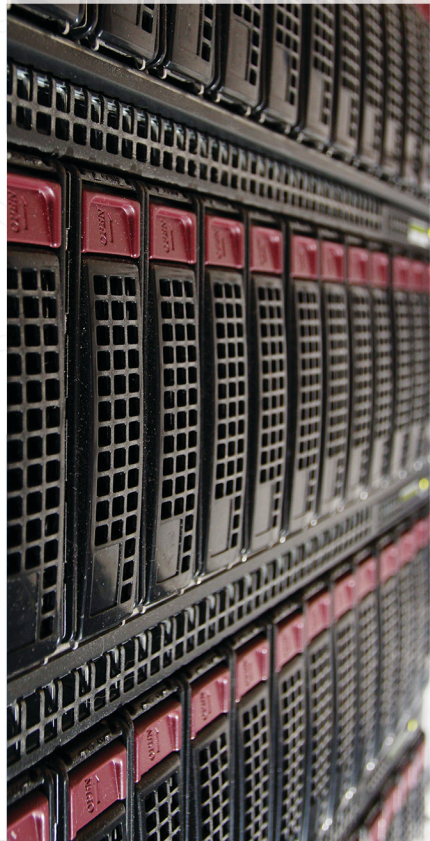
We will create you a cluster to meet your needs. We will use our knowledge of CFD and CFD hardware to make sure you only pay for what you need and nothing more.

Our pricing strategy is unique. We charge for the **components with a handling fee of 10%** and assembly time at £95/hour. All of our IP that has gone into designing and testing the cluster is completely free.

**E: [hardware@totalsim.co.uk](mailto:hardware@totalsim.co.uk) T: +44 (0)1280 840 316**

### Free Benchmarks

Send us a test case and we will happily provide benchmarks against your current hardware solutions




# TOTALSIM

EXPERTS IN  
COMPUTATIONAL FLUID DYNAMICS

[WWW.TOTALSIMULATION.CO.UK](http://WWW.TOTALSIMULATION.CO.UK)

T: +44 (0) 1280 840 316

 @totalsimltd