

Domestic shares advanced for fourth trading session on Thursday after Reserve Bank of India (RBI)'s Monetary Policy Committee (MPC) on Thursday refrained from slashing repo rate and maintained an accommodative stance. Sentiment improved after RBI estimated a 6% GDP growth rate for 2020-21 while projecting a 6.2% growth rate for Q3 December 2020. It revised the CPI inflation projection for Q4 March 2020 to 6.5% and 5.4-5% in the first six months of 2020-21 and 3.2% in the third quarter of 2020-21.

Global Markets

Cost cuts helped Nokia to a surprise rise in its October-December underlying profit although the Finnish telecom network equipment maker flagged European shares rose to a record high on Thursday as China's intention to cut tariffs on U.S. goods and a swathe of strong bank earnings energized equity markets. The pan-European STOXX 600 index (STOXX) rose as much as 0.7%.

INDEX	ADVANCE	DECLINE	UNCHANGED
NSE	1021	756	369
INDEX	ADVANCE	DECLINE	UNCHANGED
BSE	1400	1085	171

Gainers

LARGECAP	%CHANGE	MIDCAP	%CHANGE
EICHERMOT	+5.35%	AJANTPHARM	+8.92%
INDUSINDBK	+4.57%	LICHSGFIN	+8.08%
ZEEL	+3.90%	EDELWEISS	+5.30%
SBIN	+3.23%	HEG	+4.91%
BAJFINANCE	+3.00%	OIL	+4.53%

Losers

LARGECAP	%CHANGE	MIDCAP	%CHANGE
TATAMOTORS	-2.86%	JUBLFOOD	-4.10%
CIPLA	-2.01%	APOLLOTYRE	-1.96%
TITAN	-1.61%	ADANIPOWER	-1.94%
INFY	-1.60%	VOLTAS	-1.60%
ITC	-1.41%	EXIDEIND	-1.45%

For our BIG PROFIT calls and LATEST Reports, SUBSCRIBE to our Premium Reports. Click here.....

Nifty



Indian Markets

INDEX	VALUE	CHANGE	%CHANGE
SENSEX	41306.03	+163.37	+0.40%
NIFTY	12133.65	+44.50	+0.37%
NIFTYBANK	31286.75	+284.80	+0.92%
INDIA VIX	13.7525	-0.42	-2.96%

International Markets

INDEX	VALUE	CHANGE	%CHANGE
DOW	29290.85	+483.22	+1.68%
NASDAQ	9508.68	+40.71	+0.43%
FTSE	7509.12	+26.64	+0.36%
SHANGHAI	2866.51	+48.42	+1.72%
NIKKEI	23873.59	+554.03	+2.38%

OUR PREVIOUS CALLS UPDATE

Intraday super stars

Date	Stocks	Entry	Exit	P/L
06/02	BATAINDIA(L)	1882.50	-	UNEX
06/02	DABUR(L)	513	507.85	-2007

Multibagger

Date	Stock	Entry	Exit	P/L
06/02	GRASIM(L)	806	802	-3000

Trifid special

Date	Stock	Entry	Exit	P/L
06/01	UBL(L)	1318	1344.35	+5997

Stock Snippets

The Centre may direct **Indian Oil Corporation (IOC)** to buy back its 3 percent stake to bolster government finances as tax collection and divestment targets lag, The Economic Times reported.

Larsen & Toubro Infotech has expanded its engagement with OKQ8 AB Scandinavia. Over the next five years, this engagement will transform applications and infrastructure landscape with services.

Indiabulls Ventures share price declined 2 percent on February 6 after SEBI bars 2 directors of the company from accessing capital market for 1 year

Dilip Buildcon has been declared as L-1 bidder in the tender floated by the National Highways Authority of India for the project in the state of Chhattisgarh.

The US Food & Drug Administration (US FDA) has approved the Abbreviated New Drug Application (ANDA) filed by Granules Pharmaceuticals, Inc., a wholly owned foreign subsidiary of **Granules India Limited** for Colchicine Tablets USP, 0.6 mg.

Global Markets

Asian markets continued their recovery on Thursday morning following the release of positive U.S. data overnight. The Hang Seng Index surged 2.1%

Japan stocks were higher after the close on Thursday, as gains in the Paper & Pulp, Railway & Bus and Real Estate sectors led shares higher. The Nikkei 225 gained 2.38%.

Australia stocks were higher after the close on Thursday, as gains in the Energy, Financials and Healthcare sectors led shares higher. At the close in Sydney, the S&P/ASX 200 gained 1.05%

DATE: 05/02/20

FII/DII	CASH	MTD	YTD
FII	+248.94	-37.71	-687.86
DII	+262.75	+8427.15	+8613.15

Sectoral gainers and losers

SECTOR	%CHANGE IN MARKETCAP	ADV	DEC
Paper	2.16%	16	6
Finance	2.13%	82	31
Media & Entertainment	2.09%	23	12
Miscellaneous	2.02%	21	24
Agri	1.64%	40	22
Metals & Mining	1.00%	55	35
ETF	0.96%	45	8
Banks	0.88%	30	9
Infrastructure	0.81%	36	23
Capital Goods	0.72%	48	38
Power	0.56%	19	9
Consumer Durables	0.46%	15	10
Healthcare	0.38%	51	45
Construction Materials	0.30%	35	21
Automobile & Ancillaries	0.03%	45	68
Hospitality	0.00%	14	10
Trading	-0.13%	14	6
Plastic Products	-0.15%	14	14
Real Estate	-0.26%	31	21
Chemicals	-0.30%	56	52
Textiles	-0.49%	48	47
Software & IT Services	-0.61%	45	40
FMCG	-0.66%	14	27
Logistics	-0.71%	15	13

Stocks breakout on moving average

STOCKS	PRICE	30DMA
L&TFH	128.05	119.32
POLYCAB	1057	1011.54
PEL	1570.25	1543.17
TVSMOTOR	473.85	466.08



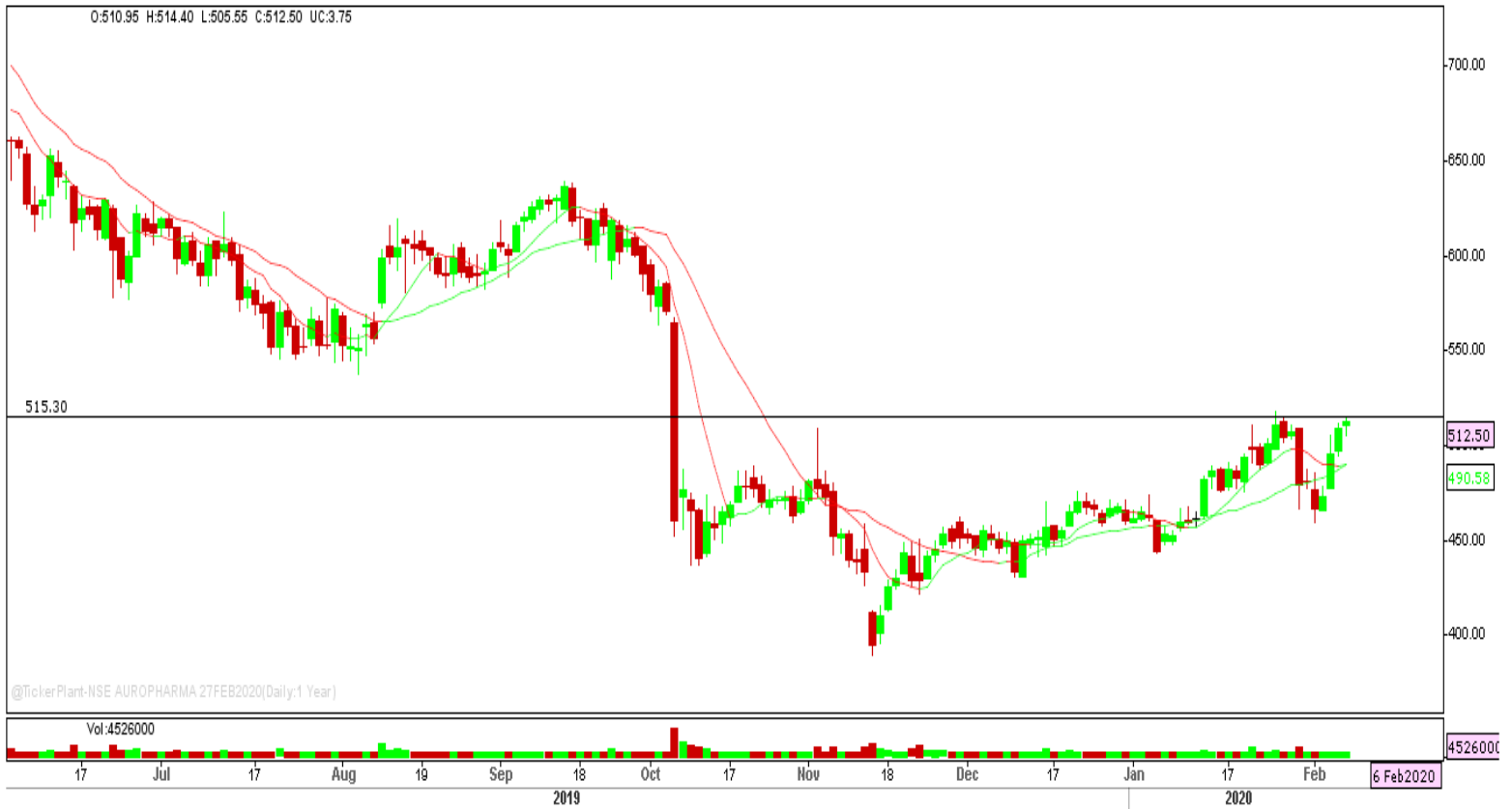
STOCK surged higher forming doji candle near the resistance level and settled with bullish biasness. The stock may give breakout in coming trade session.

*** TARGETS ***/*** SL ***. For complete call subscribe to our premium reports.



STOCK is being trading higher since couple of trading session settled near high forming bullish consolidation. The stock may give breakout in coming trade session.

*** TARGETS ***/*** SL ***. For complete call subscribe to our premium reports.



STOCK is being trading higher forming higher highs and higher lows and settled near the immediate resistance level. The stock fut may surge higher in coming trade session.

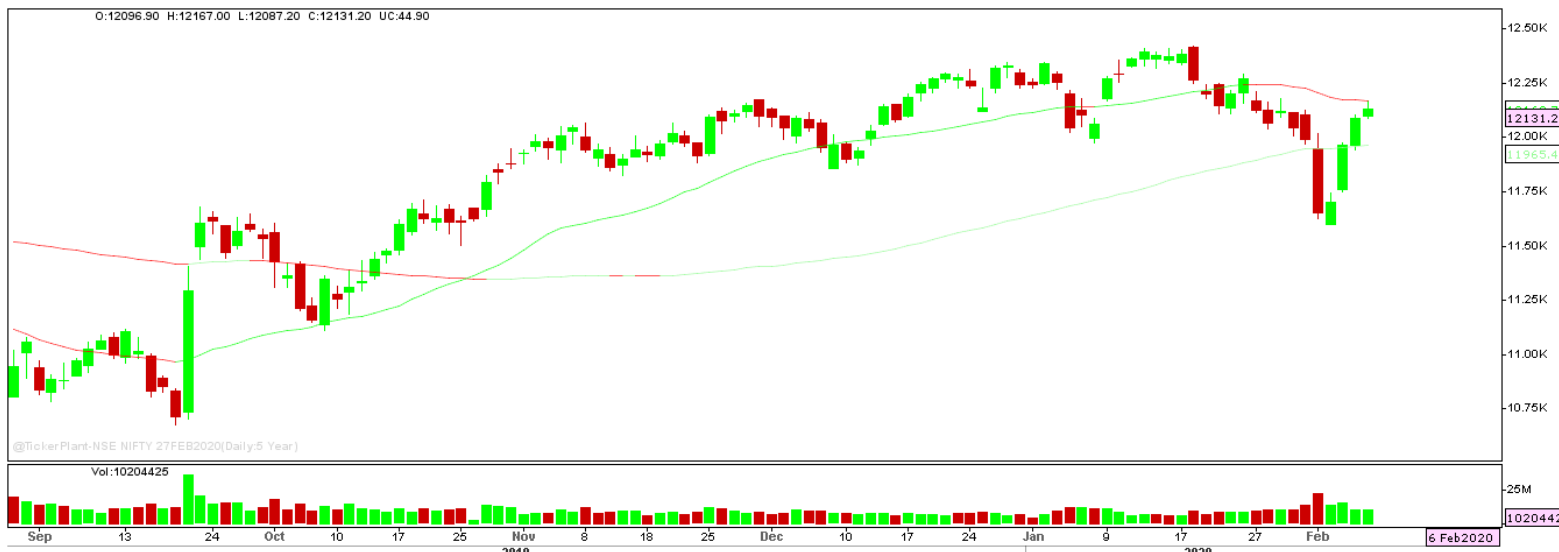
**** TARGETS ****/**** SL ****. [For complete call subscribe to our premium reports.](#)



STOCK traded higher forming bullish candle on daily chart and settled near the critical resistance level. The stock may surge higher in coming trade session.

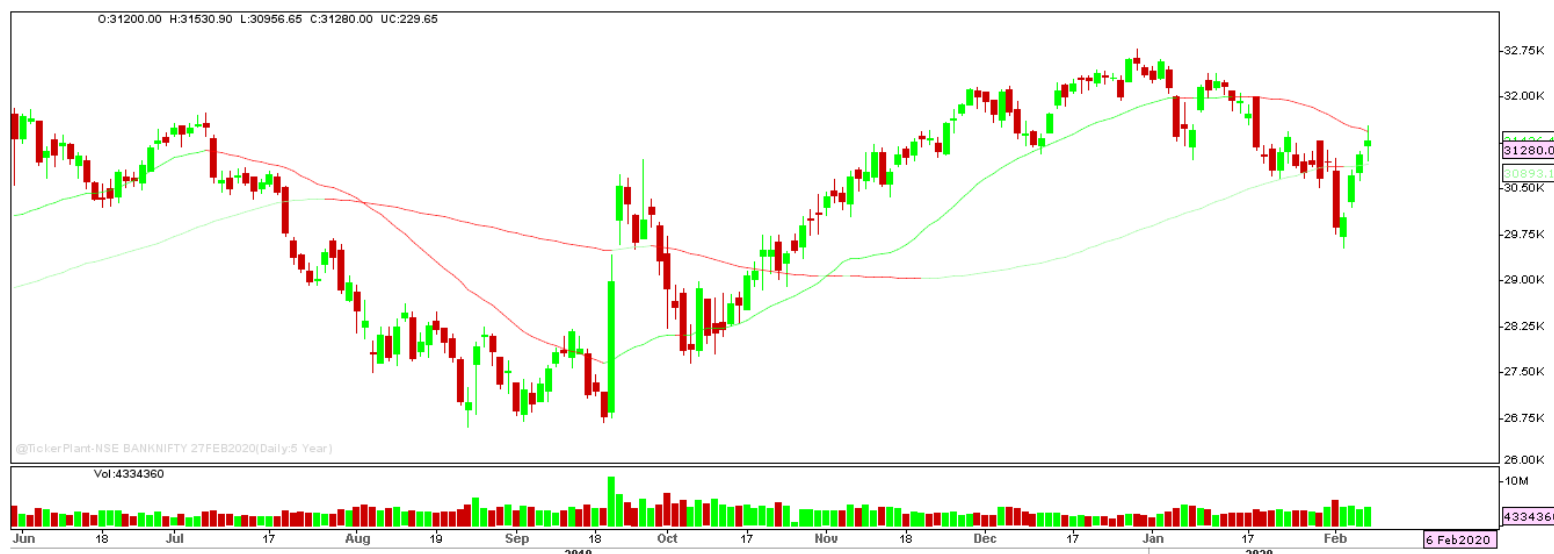
**** TARGETS ****/**** SL ****. [For complete call subscribe to our premium reports.](#)

Nifty Technical's



Nifty Future surged higher for the fourth consecutive trading session and settled higher at 12131.20. The next key support and resistance for the market is at 12050 and 12225.

Bank Nifty Technical's



Bank nifty fut too surged higher and traded in line with nifty 50 to close at 31280. The next key support and resistance for the banking index is at 30950 and 31550.

Index	05-FEB-20	06-FEB-20	Change in OI	% Change
NIFTY	13788375	15235425	+1447050	+10.49%

SCRIPS IN F&O BAN FOR TRADE
YESBANK.

Stocks at 52 Week High

Stocks	New 52 W/H	Previous High
AJANTPHARM	1328	1227
ATUL	5029.10	5029
BAJFINANCE	4677.85	4550
CDSL	294	285.50
JINDALSTEL	198.75	192.95

Stocks Approaching 52 Week High

Stocks	LTP	52W High
BATAINDIA	1853.95	1882.50
PIDILITIND	1550.40	1574.40
ESCORTS	856.35	865.80
ASIANPAINT	1856.80	1896.75
ICICIBANK	541.60	552.20

Stocks rising continuously 2-3 days

Stocks	LTP
TATASTEEL	477.60
JSWSTEEL	276.45
INDUSINDBK	1334.25
BAJFINANCE	4666.35

Stocks at 52 Week Low

Stocks	New 52 W/L	Previous Low
GAYAPROJ	42.05	44.25
KIRLOSENG	139.05	140.60
ZENSARTECH	161.85	162.55
-	-	-
-	-	-

Stocks Approaching 52 Week Low

Stocks	LTP	52W Low
GILLETTE	6405.40	6169.00
WIPRO	243.65	232.20
NTPC	112.00	106.66
ITC	213.55	205
ONGC	107.25	101.55

Stocks falling continuously 2-3 days

Stocks	LTP
BANDHANBNK	425.45
CIPLA	439.65
TITAN	1259.30
KOTAKBANK	1674.00

Event Calendar(03rd FEBRUARY to 08th FEBRUARY 2020)

03/02/20 (Mon)	04/02/20 (Tues)	05/02/20 (Wed)	06/02/20 (Thur)	07/02/20 (Fri)	08/02/20 (Sat)
RESULT: GODREJPROP, HUDCO, HSIL, SRF, MRPL, TATACHEM, ECO DATA: NIKKEI MARKIT MANUFACTURING PMI.	RESULTS: ADANI PORTS, BHARTIARTL, CSBBANK, GATI, EXIDIND, JSWENERGY, PNB, TVSMOTOR, THERMAX, TITAN, TATAGLOBAL.	RESULT: ADANI ENT, AGL, ANDHRABANK, AJANTPHARM, BERGEPAIN, BOSCH, CIPLA, DIVISLAB, HINDPETRO, IBULHSGFIN, ENGINEERSIN, NIIT, PTC, ECO DATA: NIKKEI SERVICE PMI.	RESULT: ADANIPOWER, AUROPHARMA, DALBHARAT, NMDC, IGL, MINDAIND, SUNPHARMA, UCOBANK, ECO DATA: CRR, INTEREST RATE DECISION, REVERSE REPO RATE.	RESULT: ACC, ABBOTINDIA, BRITANNIA, EMAMILTD, MAXINDIA, KOLTEPATIL, NTPC, NHPC, VOLTAS, UPL, ECO DATA: FX RESERVE DATA.	RESULT: DLINK, JKCEMENT, M&M, VRLLOG.

DISCLAIMER

Trifid Research respects and values the Right to Privacy of each and every individual. We are esteemed by the relationship and by becoming our clients; you have a promise from our side that we shall remain loyal to all our clients and non-clients whose information resides with us. This Privacy Policy of Trifid Research applies to the current clients as well as former clients. Below are the word by word credentials of our Privacy Policy:

1. Your information, whether public or private, will not be sold, rented, exchanged, transferred or given to any company or individual for any reason without your consent.
2. The only use we will be bringing to your information will be for providing the services to you for which you have subscribed to us.
3. Your information given to us represents your identity with us. If any changes are brought in any of the fields of which you have provided us the information, you shall bring it to our notice by either calling us or dropping a mail to us.
4. In addition to the service provided to you, your information (mobile number, E-mail ID etc.) can be brought in use for sending you newsletters, surveys, contest information, or information about any new services of the company which will be for your benefit and while subscribing for our services, you agree that Trifid Research has the right to do so.
5. By subscribing to our services, you consent to our Privacy Policy and Terms of Use.
6. Trifid research does not guarantee or is responsible in any which way, for the trade execution of our recommendations, this is the sole responsibility of the client.
7. Due to the market's volatile nature, the trader may/ may not get appropriate opportunity to execute the trades at the mentioned prices and Trifid Research hold's no liability for any profit/ loss incurred whatsoever in this case.
8. It is the responsibility of the client to view the report timely from our Premium member section on our website: www.trifidresearch.com and the same will also be mailed to this registered email id.
9. Trifid research does not hold any liability or responsibility of delay in mail delivery of reports, as this depends on our mail service provider's network infrastructure.
10. The clients can call us for any query related to buying/selling the securities, based on our recommendations.