



# Horley Local History Society

## NEWS Letter

DECEMBER 2018

**A VERY MERRY CHRISTMAS & A HAPPY  
NEW YEAR TO ALL OUR READERS**

### **The Venue**

The Society meets at the Methodist Hall, Victoria Road, Horley, Surrey, every 4<sup>th</sup> Thursday in the month at 7:30pm for 8:00 unless otherwise stated below. Parking is available at the rear.

### **Meetings Calendar**

**Thursday 24 January 2019** Research to find my Gt, Gt, Grandfather, Insp Donaldson, The First Policeman Murdered in Surrey. Henry Pelham

**Thursday 28 February 2019** AGM Followed by Gleaning information from early Local Photos. Brian Buss

**Thursday 28 March 2019** On this Day 1942 - The death of J G Hextal, killed in the Raid on St Nazaire, 28 Mar 1942. Doug Cox

**Thursday 25 April 2019** TBA

**Thursday 23 May 2019** TBA

**Thursday 27 June 2019** TBA

**Thursday 25 July 2019** Tour around Reigate Caves. Details to be announced. May require a small cash donation.

### **Summer Break**

**Thursday 26 September 2019** History of the Post Office in Horley Alan Reid

**Thursday 24 October 2019** History of Earlswood Institute Doug Cox

**Thursday 28 November 2019** Surrey on Film, 1914-1953, A Community in War & Peace

**Thursday 19 December 2019** A Christmas Meeting

### **Horley's New Library**

Work commenced at long last in October within the shop spaces under Russell Square, (opposite Waitrose store) to construct the internal units. This is due for completion in January 2019. The installation of the Library's IT systems and books are planned for February, after a 2 week closure of the present Library.

Precise dates for its opening will be announced in the New Year.

The books and maps etc, used by the Local History Centre volunteers that have been acquired during its 23 years of operating this service, will also be moved.

### **SCC Future Strategy**

The Surrey County Council has recently issued the following document:-

*"Transforming Libraries & Cultural Services in Surrey"* that could ultimately have an impact on our new library and perhaps HLHS activities within it.

The SCC is urgently asking for views via a questionnaire that is available online at [surreycc.gov.uk/consultations](http://surreycc.gov.uk/consultations), or picking up a hard copy at local libraries, or requesting one on 03456 009009, or texting 07860 053465.

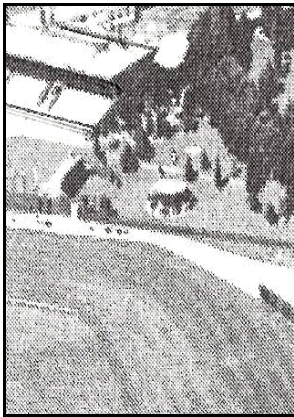
It suggests that to sustain its libraries it not only has to use its present resources, but to use them in different and creative ways. The HLHS volunteers that have sat in the library twice weekly over many years to assist visitors, have many views on how this could be done, and most have already made their views known.

The Society would also urge you to do likewise, whether you are Library members or not.

### **The Gatwick Race Course Bandstand**

Its history has literally moved on to a new page. The race course was first opened in 1891 in an attempt to overcome the rowdiness at courses near London. In WW1 the Grand National was held there for 3 years.

The Bandstand that was installed at a date within the 1920s/30s can be seen in the aerial view below to the right of the Grandstand and above the eastern turn of the race course



By 1958, the Racecourse and Bandstand had to be removed to make way for the new Gatwick Airport that eventually became part of Sussex. Later, the Bandstand was erected in Queen's Square, Crawley as shown below. HLHS urged Crawley Town Council to place a plaque on it detailing its previous history which it did, placed on the floor of its entrance that visitor's attention was readily drawn to.



The above photo shows the Bandstand when it was first placed in Queens Square.



When the Square was recently reconfigured, it was again removed and very pleasantly restored before it was repositioned in the Memorial Gardens, as seen above. Again HLHS has contacted Crawley Council requesting an updated plaque be placed on it, but unfortunately it has insufficient funding to do so. Discussions are underway to see how this might be overcome. (Ideas are welcome to this end.)

A fitting location to show off a fine piece of past architecture perhaps for a final time. Well done Crawley, but visitors do need to be informed of it's history.

### **Re-Publishing some of our Great-Grandfathers Horley Book Series**

**Books 1** in this series is with the printers now and so will be on sale in the New Year. We have had many requests for these "out of print" books to complete the set. Your Committee is seriously considering a book 5 but, as we have said many times in the past, the availability of old postcards and/or personal photos of persons or the locality, are becoming forever scarcer.

If you, or anyone you know, possess any early pictures of the Horley area and would give the HLHS permission to use them for this purpose, we would love to hear from you.

### **Strawson Hall**

As mentioned in the previous Newsletter, the Hall was officially opened in September. This was much to the credit of Doug Kilborn who has led the long struggle to restore this real piece of Horley history back to its living use.

This Hall came about originally through the philanthropic nature of a Horley businessman who wished to provide a place where WW1 ex-servicemen could frequent whilst looking for employment. It was first located where Lidl is today until moved to its present location in 1925 where it has been used almost continuously ever since.

For those who live within reach of Horley, there is a brief history of the Hall in Horley Library. George Frederick Strawson would be pleased to know that his Hall has been given a new lease of life to live on in the town thanks to Doug Kilborn. Thank you Doug.

### **Archive Storage - We are Desperate!!!**

Following the recent death of David Hall, a past Chairman of HLHS, the Society has inherited another vast batch of books and documents which will need to be stored. Whilst looking through them casually this week a correspondence file was found which included a letter dating from 1985 seeking help to resolve our Archive storage problem.

This problem is now acute. We can, of course, send everything to SHC at Woking but we will then effectively lose control of it from Horley.

Will all members please apply themselves to this issue and try to help us discover some local premises that would suit our needs.