



EXPERIENCE CARPET TILES
PARAGON COLLECTION 2018



EXPERIENCE CARPET TILES
PARAGON COLLECTION 2018

- 4. [National Floorcoverings](#)
- 6. [History](#)
- 8. [Environment](#)
- 28. [Our Influences](#)
- 30. [Case Studies](#)

LUXURY COMMERCIAL FLOORING

- 66. [Duera 5mm](#)
- 70. [Rappórt 2.5mm](#)

DESIGN LOOP

- 76. [Phase](#)
- 78. [Mesh](#)
- 80. [Greda](#)
- 82. [Cresta](#)
- 84. [Highlights](#)
- 88. [Total Contrast](#)
- 94. [Vapour](#)
- 98. [Draco](#)
- 100-101. [DesignDek](#)
- 102. [Strobe](#)
- 106. [Codec](#)
- 110. [Workspace Linear](#)

LOOP PILE

- 114. [Workspace Loop](#)
- 116. [Diversity Groove](#)
- 120. [Diversity](#)
- 124. [Toccarre](#)
- 126. [Vital](#)
- 128. [Sirocco Stripe](#)
- 130. [Sirocco](#)
- 132. [Macaw Stripe](#)
- 134. [Macaw](#)

CUTPILE

- 138. [Maestro38](#)
- 142. [Solaris](#)
- 144. [Workspace Cutpile](#)

ENTRANCE MATTING

- 148. [Frameworks](#)
- 150. [Entrack50](#)
- 152. [Tyre Tile](#)
- 154. [Premier](#)
- 156. [Workspace Entrance](#)
- 158. [Workspace Entrance Design](#)

- 160. [Our Projects](#)
- 162. [Cleaning Guide](#)

To get more information
on any product just
click its name



THE GROUP IS COMMITTED TO
UK MANUFACTURING AND
THE VERY BEST
ENVIRONMENTAL PRACTICE

OUR FAMILY - THE NATIONAL FLOORCOVERINGS GROUP

OUR HERITAGE - OUR FUTURE

Producing a wide variety of products from fibre bonded carpets for the education market, tufted carpet and tiles for the commercial sector to specialised indoor and outdoor sports surfaces, the group has expertise in all flooring fields.

National Floorcoverings is a UK family owned business which, along with associated family businesses, has a turnover exceeding £60m.

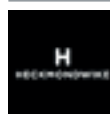
The family is dedicated to maintaining and developing its UK manufacturing base with customer support. It takes a colossal supply network to ensure a combined 500,000 sq.ft. of facilities run efficiently 365 days of the year. In support of the local community, suppliers are often used in the surrounding vicinity of the factories.

Across the UK, the group employs over 350 people, most of which are local to the five manufacturing facilities in Yorkshire and Derbyshire.

By striving to be No.1 in sustainable design for flooring solutions the family of companies has established strong international export presence in more than 50 countries.

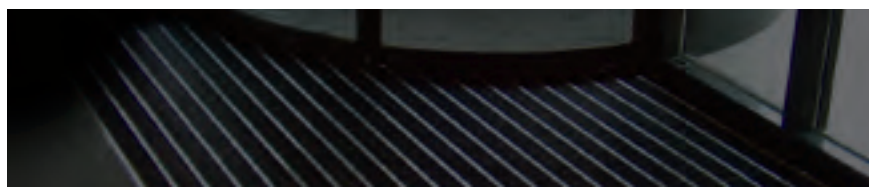
Where tested, the group has BRE 'A+' Ratings for its products, being the highest environmental standard currently available. With clients such as Google, Apple, Local Authorities, the Health

Service, the Ministry of Defence, there is always a requirement to provide the highest quality products using the most technologically advanced production processes and therefore commanding a route to the future.



National Floorings Companies
 Heckmondwike-FB (239,677 ft2 facility)
 Paragon (98,000 ft2 facility)
 Play-Rite (39,677 ft2 facility)
 Mat.Works (Part of Paragon)

Associated Family Companies
 Granwood (64,000 ft2 facility)
 Granwax (22,000 ft2 facility)
 Geofabrics (45,000 ft2 facility)





OUR HISTORY
OUR FUTURE

Committed to UK Manufacturing

PARAGON ... A LONG HISTORY AND A BRIGHT FUTURE IN CARPET TILE MANUFACTURING

Since the establishment of Paragon in 1997 we have been consistently a major player in tufted carpet tiles.

We are part of a dedicated manufacturing flooring group called National Floor Coverings.

The group has flooring roots that date back to 1873 when it was involved in the manufacture of high quality Axminster and Wilton carpets. Paragon Carpets began with a small factory and only 3 product ranges, this quickly expanded to a factory now regarded as the cleanest carbon emissions tile factory in Europe, manufacturing over 25 ranges, with BREEAM A+ certification and the highest quality standards in the industry.



There is no such thing as 'away'.
When we throw anything away
it must go somewhere.

Annie Leonard



paragon **mat.works**
CARPET TILES Entrance Solutions

The Environmental culture at Paragon is '**reduce, recycle, reuse**', using raw materials from sustainable sources/with recycled content wherever possible. Employees are actively involved in setting and monitoring the achievement of environmental objectives and targets.





Independent Monitoring

Air emissions to atmosphere from the production process are independently monitored for impacts on the environment, recent analysis confirming that the actual emissions were less than 1% of government targets.

Factory activities & production processes, and their impacts on the Environment, are regularly audited by Environmental Health Officers, and have been confirmed as a 'low risk category', most recent score rating of 5 out of 175

British Standards regularly audit the Environmental and Quality Management Systems to ensure continued compliance to accredited standards and to demonstrate continuous improvement

BreGlobal regularly audit the Environmental Profile of certified products (BREEAM) confirming continued certification





ISO 14001
Environmental
Management System



breglobal
Environmentally
Profiled products



ISO 9001
Quality Management
System



Manufacturing

Raw materials are used wherever possible from sustainable sources and with recycled / reclaimed content. Currently, standard manufacture includes:

Bitumen backing contains at least 75% of recycled product

Latex pre-coat backing contains at least 75% of recycled product

Up to 80% of the total product is made using recycled materials

Pile yarns contain up to 100% recycled content

Pallets obtained from sustainable sources

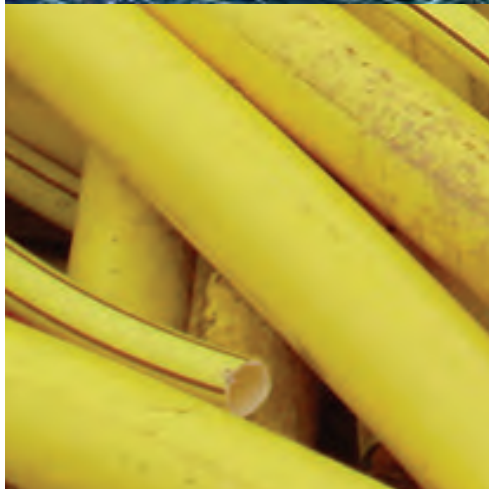
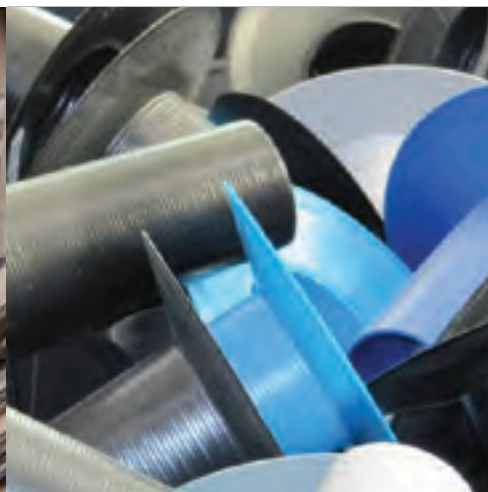
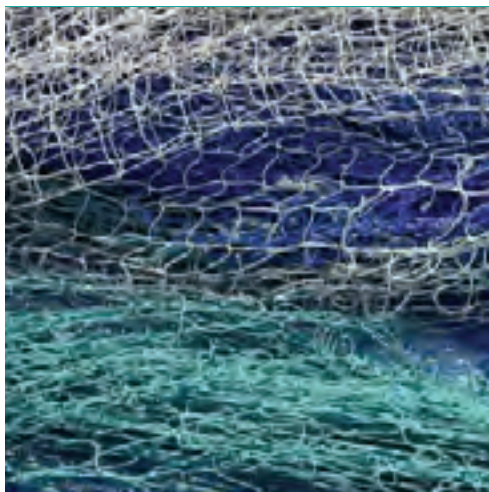
Tile boxes are 100% recycled cardboard

Production processes are not water dependent – 95% of water consumption is for recreational facilities

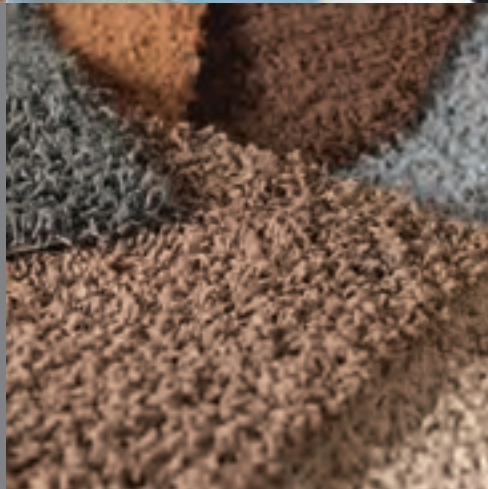




Up to 80%
of our total product
is made using
recycled materials



Paragon
operate a zero
landfill policy



Waste

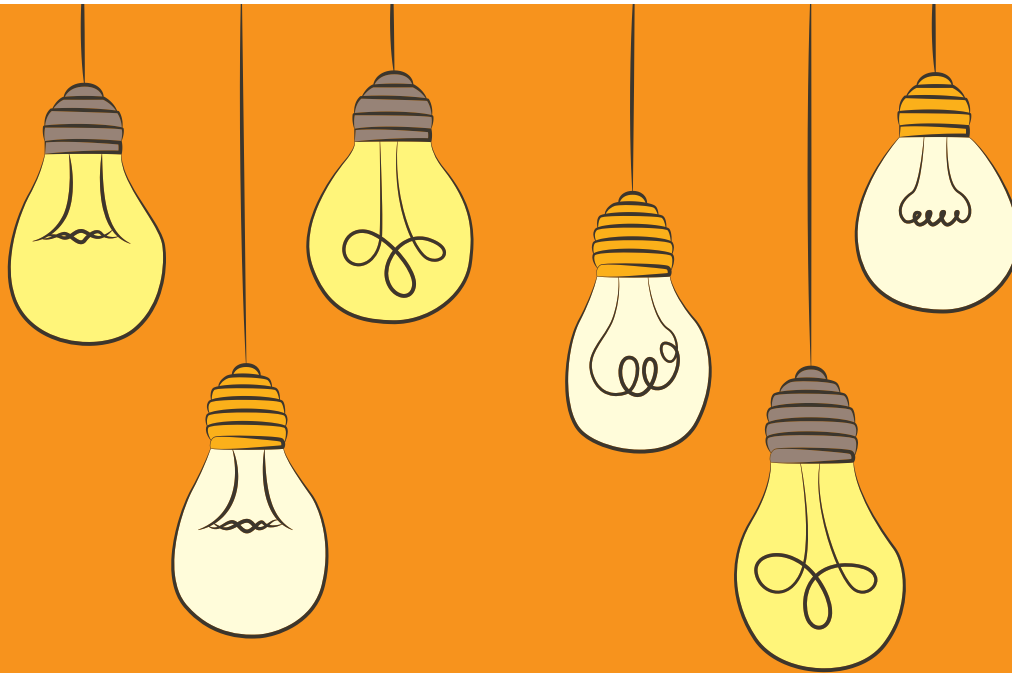
Waste streams are segregated and recycled (wherever possible) or reused, resulting in a 'zero landfill' policy

All yarn waste, cardboard, plastics & timber are recycled

Waste pallets are shredded into biomass for energy production

General waste (which is not considered recyclable) is used as a fossil fuel replacement in a 'SRF – Solid Recoverable Fuel' program, the residual ash used in cement manufacture





CO² Emissions

A new warehouse lighting system saving over 80,000kWh of electricity each year, equating to

Enough energy to fuel 26 family size homes for one year

Co2 reduction of 41.7 Tonnes (20 return trips to Australia)

STEP 1

Tiles are uplifted from site



In 2014
60,000m² of
material was handled,
72% of which was
given a second-life

STEP 2

Carpet tiles palletised



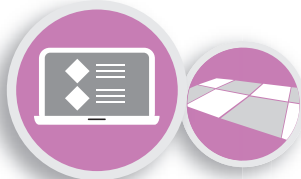
STEP 3

Recovered
Carpet tiles collected



STEP 6

Reused tiles sold online
or used to support community schemes



paragon 3R

RECOVER • RECYCLE • REUSE

CIRCULAR ECONOMY

STEP 4

Tiles are transported to the
nearest 3R recycling depot



STEP 5

Recycling begins by sorting into
style/colour and condition

Second life tiles are thoroughly
checked before re-sale.



From 2009-2014
2249 tonnes of carpet
tiles have been diverted
from landfill and given
a second life.



ECONYL®

The ECONYL® Regeneration The 4-Step Regeneration Cycle System is based not only on the development of a new technology but also the creation of a new supply chain specialized in the recovery of waste worldwide.

The **ECONYL® Regeneration System** is: Infinite, as the Polyamide 6 waste can be regenerated an infinite number of times to produce new polymers with technical characteristics and quality equivalent to products obtained from fossil materials. Innovative, as it is the only system of its kind anywhere in the world in terms of efficiency and productivity. Sustainable, as it recovers waste which would otherwise end up in landfills or oceans (fishing nets), causing serious damage to the entire ecosystem. It also enables real savings in terms of CO2 emissions. Compared to common Nylon 6, **ECONYL®** fiber has a reduction of approx. 50% of CO2 equivalent emissions/kg yarn.





Paragon's
commitment
to recycling



Cardboard Recycling

Cardboard from tile boxes / packaging / sample boxes etc is collected and sorted into different types of card . It is then shredded by type and made into tiny pieces for the next stage of the process. These tiny pieces are mixed with water to make a pulp similar to paper mache. The inks are taken out of the pulp to cleanse the cardboard. The pulp is then dried and made into rolls again and refinished and reused in new boxes / printing papers and packaging .





Plastic Recycling

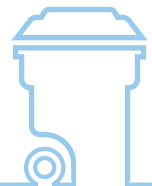
A very similar process to our card recycling the finished product however will return into food packaging, fenestration (window & door industry) to make coloured windows with the remainder ending up in automotive for new dashboards.

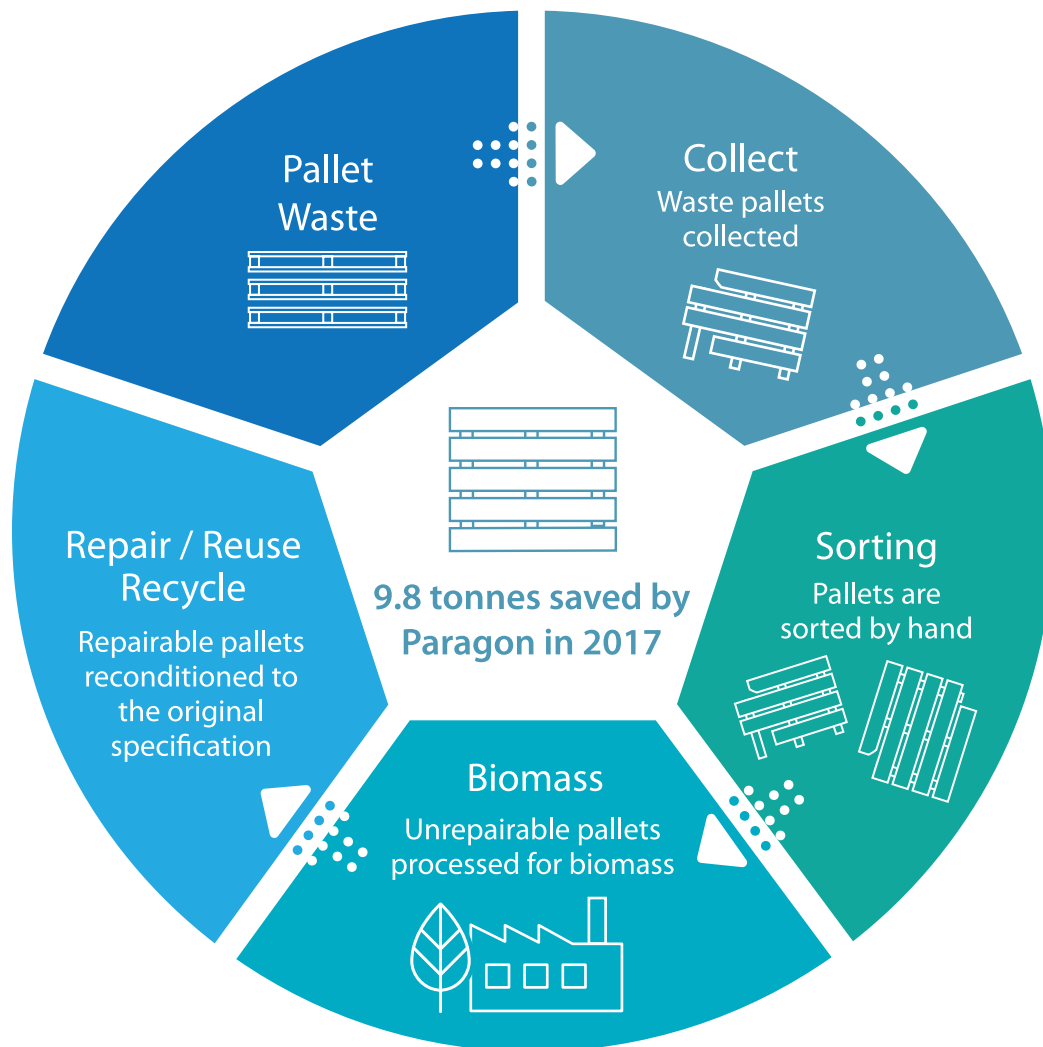




General Waste

The waste from our internal black bins and commercial waste bins which could include food waste, tins and papers are collected and funneled through various screening channels to extract waste products for different energy uses.

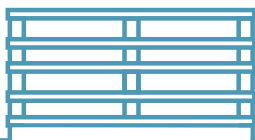


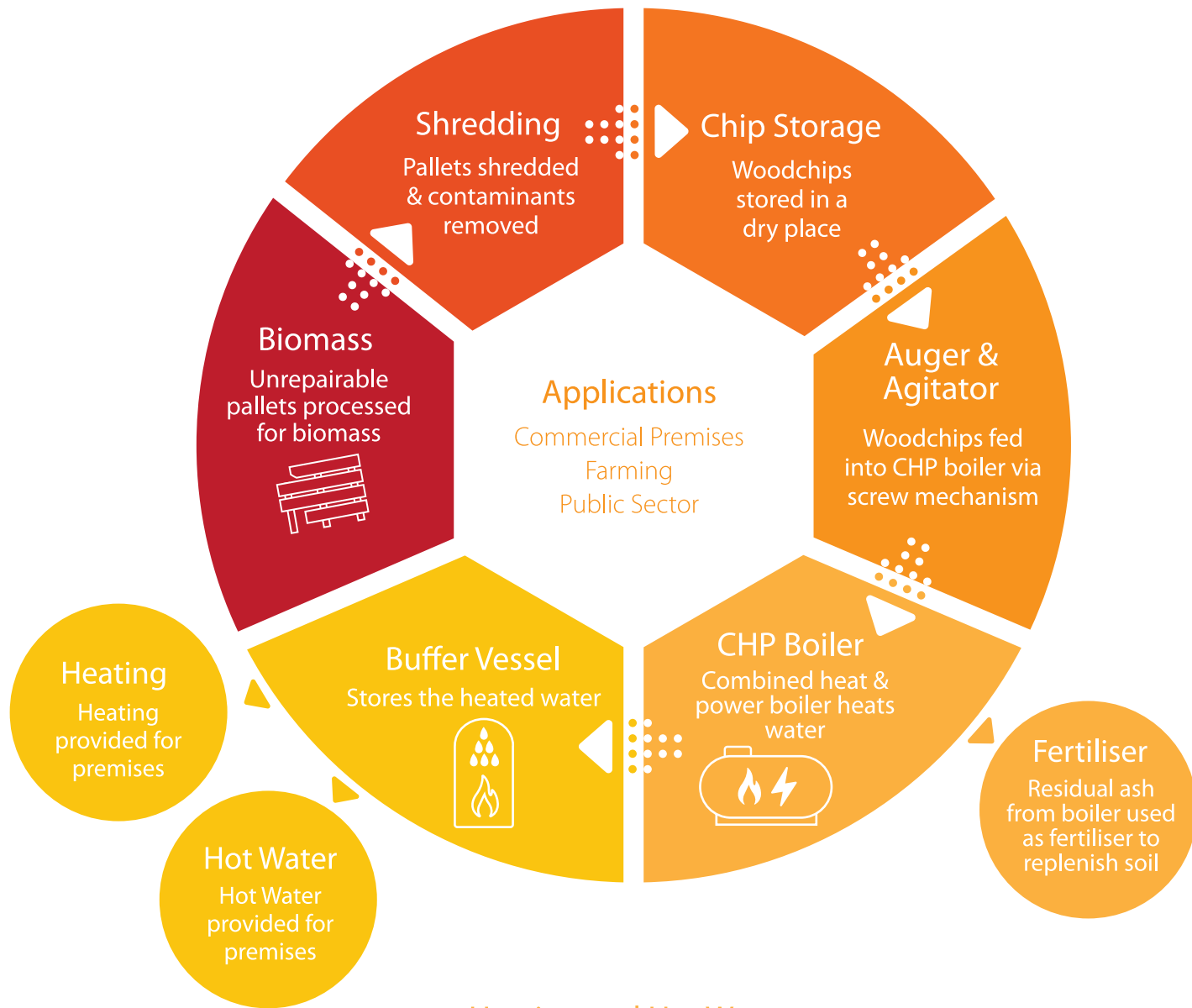


Pallet Waste

Paragon Carpets pallet waste has two environmental uses. Pallets are firstly sorted by hand and pallets identified as repairable are reconditioned and put back into mainstream use for a second life.

Pallets graded as unrepairable are chipped, baled and processed for Biomass energy sources rather than being sent to landfill.



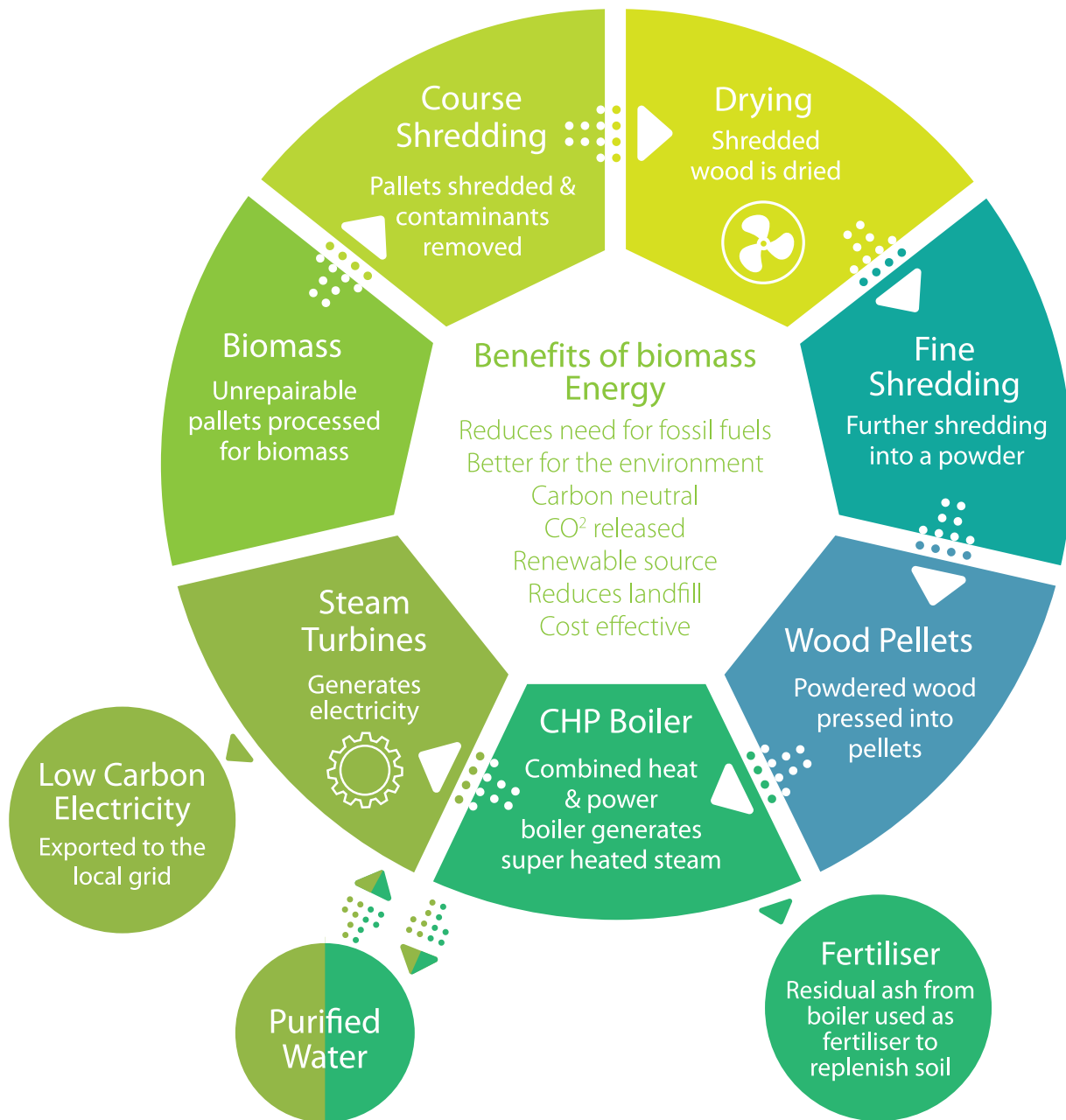


Heating and Hot Water

The secondary phase of unrepairable pallets moves waste pallets into commercial fuel via hot water.

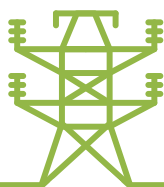
Pallets are chipped, baled and converted to fuel in commercial boilers, this then converts to hot water and is stored in buffer vessels ready for reuse. Any residual ash from the initial boiler conversion is given a second life in the farming process as fertiliser.



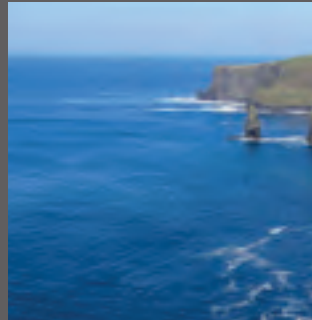


Electricity Generation

By reusing Paragon Carpets waste products feeding it into our electricity generation system, the pressed and filtered waste is used in commercial boiler system to generate steam in turbine engines which can be re-issued to the national grid. Alternatively residual ash is used in farming.



OUR INFLUENCES



PARAGON DESIGNERS IMMERSE THEMSELVES IN JOURNEY'S THAT ALLOW A VARIETY OF CULTURES, CRAFTS AND EXPERIENCES TO FLOW THROUGH INTO THE FLOORING FINISHES.

After journeys to East Europe, Central America and Nordic Coasts our designers became immersed in the strong identity and rich colours that permeated each culture. These experiences can be witnessed in the new ranges launched by Paragon. Strong and bold block designs in keeping with east european fabric design, teamed with rich colourways inspired by the filaments of minerals found in Nordic coastlines. These various techniques have been prevalent throughout the ages and compiled into Paragon ranges by our artisan designers to create our own - design journey.

In 2018 Paragon designers will travel closer to home investigating the trends of black metallic colourways in Yorkshire's cutlery heritage. Vivid greens and wicker textures in Ireland's pastures and the theme of multi-level flooring - with inspiration only a step over the border in Scotland's jagged cliff faces and mountain ranges.





PUBLIC HEALTH WALES CARDIFF

CIRCULAR ECONOMY PROJECT



DIVERSITY

Bark / Denim / Electric / Foundry / Liberty
London Stone / Mouse / Razzmic Berry

TOCCARRE

Fresco / Grigia / Marrone / Montagna

STROBE

Spark

Project Co-ordinator
Greenstream Flooring





BRISTOW HOLLAND IT RECRUITMENT



HIGHLIGHTS

Cutpile 5604 / Cutpile 7454 / Cutpile 6504





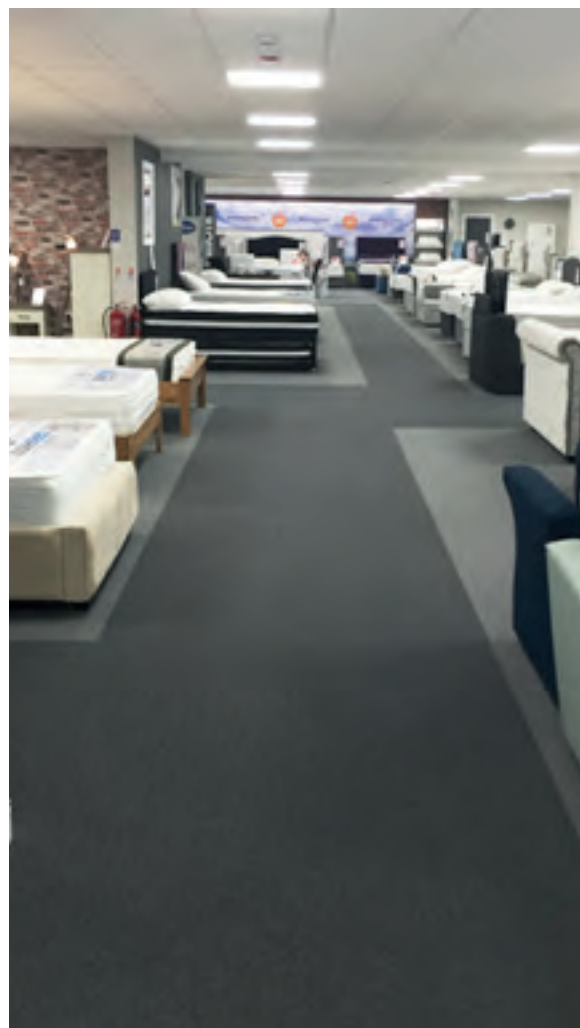


VAPOUR
Steam





OAK CITY



DIVERSITY

Diversity - Foundry Grey & London Stone





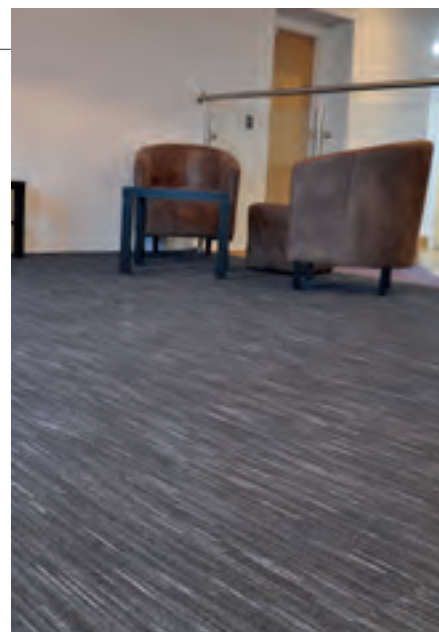
3 WAYS SCHOOL, HALIFAX

WORKSPACE LINEAR

Islington Tunnel

DIVERSITY

Razzmic Berry / Grasshopper /
Racing Green / Denim / Skylight

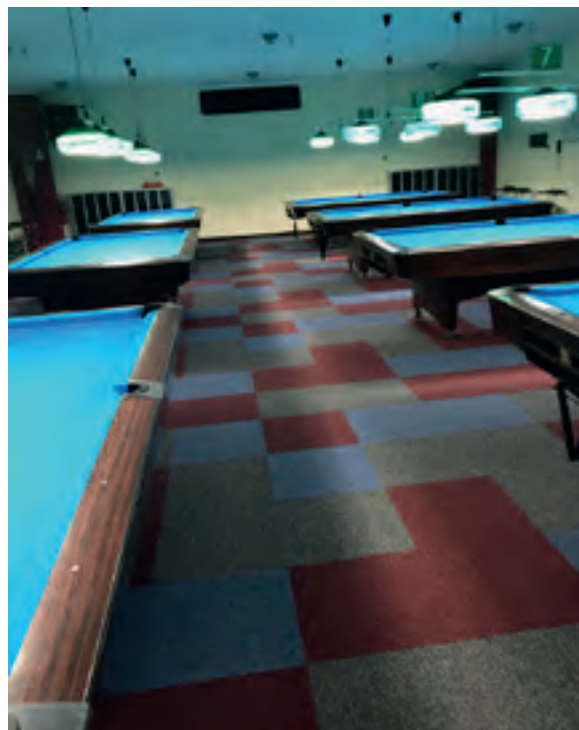




SALA BILIARDO



TOCCARRE
Desmo / Blu / Termi





LONDON OFFICE



HIGHLIGHTS

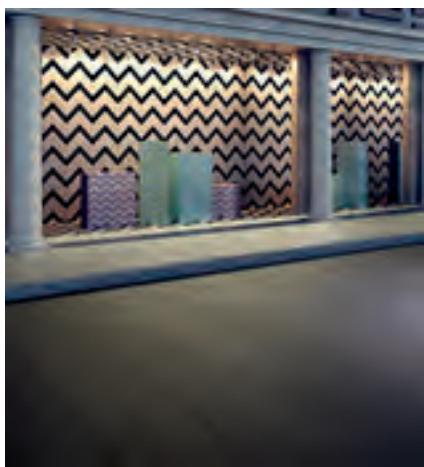
H Cutpile 6554

H Cutpile 4214





DUERA





DUERA 5MM AND RAPPÓRT 2.5MM LUXURY VINYL



NORTH WEST 2016 COMMERCIAL PROPERTY - WINNER



TOWER WHARF

AWARD WINNING

FROM THE ROYAL
INSTITUTE OF CHARTERED
SURVEYORS

STROBE

Strobe Flex / Rapid / Ignite





EPR OFFICE, WROCLAW

TOTAL CONTRAST
Palladium Sky



FINEST INTERIOR AWARD CONTRACT CATEGORY OFFICE - WINNER



OPERA SOFTWARE WROCLAW POLAND BY MODE:LINA ARCHITECTS
MODE:LINA WWW.MODELINA-ARCHITEKCI.COM

Award Winning

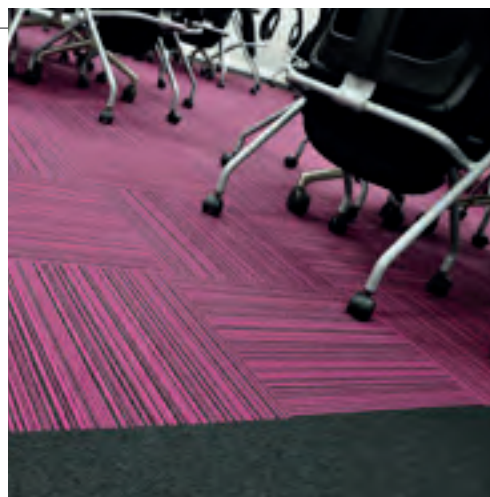
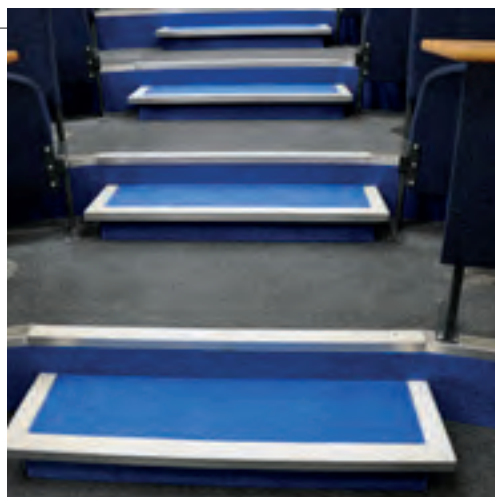
Finest interior
award contract
category office - winner

SOLARIS

Charon - Callisto







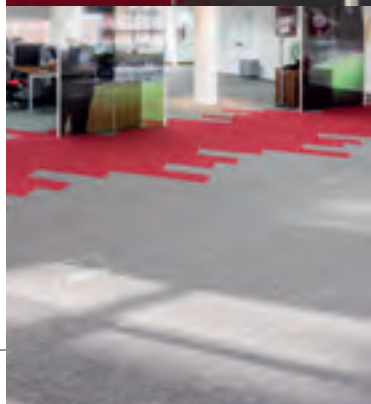
STROBE & CODEC





SI GAMES, LONDON

SIROCCO







STROBE
Plasma

WORKSPACE LOOP





EBBW VALE LIBRARY



STROBE
Flex

WORKSPACE LOOP
Apple



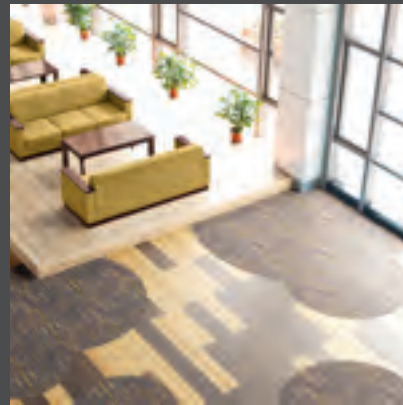


CAMBRIDGE CENTRAL LIBRARY



SIROCCO
Lime / Quartz







LUXURY COMMERCIAL FLOORING

Duera 5mm
Rappórt 2.5mm

DUERA 5MM





3121 Twilight Ash



3128 Barleycorn Oak



3129 Devonshire Oak



3131 Edwardian Oak



3123 Dark Linear Wood



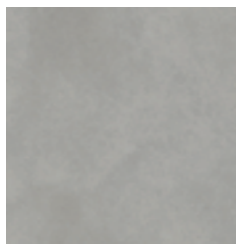
3124 Wharf Side Ash



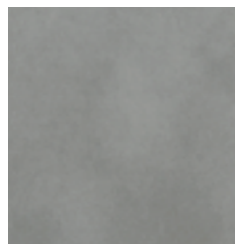
3126 Hemingway Oak



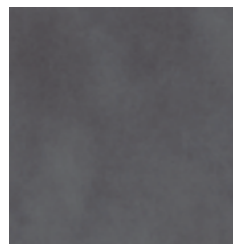
3126 Hemingway Oak



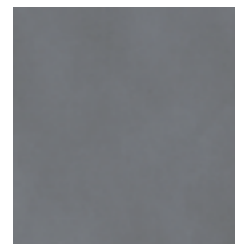
3132 Light Grey Concrete



3133 Alloyed Cement



3135 Dark Grey Concrete



3134 Cold Grey Concrete



3136 Cliffside Slate

DUERA 5MM



Characteristics	Standards	Unit	Duera LCF
Type of floorcovering	EN ISO 10582		Heterogeneous, PVC
Surface treatment			PUR
Total weight	EN ISO 23997	g/m ²	8000
Performance classification	EN ISO 10874		23,34,43
Gauge	EN ISO 24346	mm	5
Wear layer thickness	EN ISO 24340	mm	0.7
Packaging plank size	EN ISO 24342	mm	10 @ 177.8 x 1219.2 = 2.17m ²
Packaging tile size	EN ISO 24342	mm	12 @ 304.8 x 914.4 = 3.34m ² 11 @ 203.2 x 1524 = 3.41m ² 9 @ 609.6 x 609.6 = 3.34m ² 8 @ 457.2 x 914.4 = 3.34m ²
Packaging size mixed sized tiles	EN ISO 24342	mm	10 @ 177.8 x 1219.2 = 2.17m ² 10 @ 304.8 x 609.6 = 1.86m ² 6 @ 600 x 600 = 2.16m ²
Dimensional stability	EN ISO 23999	%	<0.1
Residual indentation	EN ISO 24343-1	mm	0.05**
Colour fastness to artificial light	EN ISO 105-B02	level	≥6
Behaviour to fire	EN 13501-1		Bfl-s1
Slip resistance	DIN 51130		R10
	EN 13893		DS
	AS 4586		R10
Impact sound reduction	EN ISO 10140-3	dB	9
Resistance to thermal conductivity	EN 12667	m ² k/w	0.02
	ISO 8302	m ² k/w	0.02
Assessment of static electricity propensity	EN 1815	kV	<2
Chemical resistance	EN ISO 26987		*
Abrasion resistance	EN ISO 10582		Type I
	EN 660-2		Group T
Castor chair suitability	ISO 4918		Yes
Underfloor heating suitability	EN 1264-2		Suitable max. 27°C
VOC emissions	Indoor Air Comfort Gold		Eurofins certified product
	FloorScore		Certified product
	AgBB		Very low emissions
Environmental product declaration	EN 15804		DGNB Navigator www.dgnb-navigator.de

* Resistant depending on concentration and time or exposure, in case of increased impact of oils, grease, acids, alkalis and other aggressive chemicals please contact us.

** Averaged test value from current production.

RAPPÓRT 2.5MM

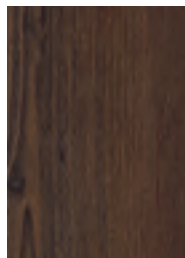




2798 Grey Limed Oak



2889 Lakeside Pine



2893 Burnt Sienna Wood



2894 Shadow Ash



2895 French Grey Elm



2896 Bowland Oak



2897 Midsummer Oak



2898 Orchard Oak



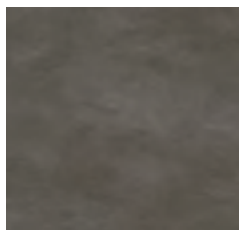
2899 Kentucky
Timberwood



2947 Dockyard Oak



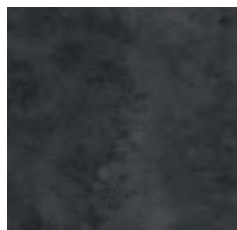
2948 Chalet Oak



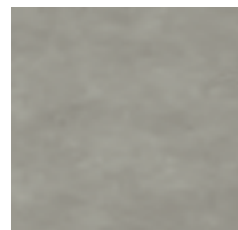
2969 Seasoned Concrete



2970 Copper Metalstone



2979 Dark Metalstone



2799 Fresh Concrete



2796 Ashen Concrete

RAPPÓRT 2.5MM

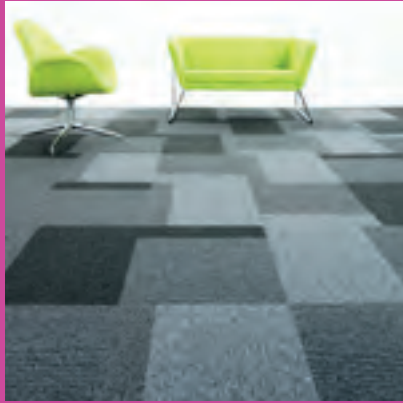


Characteristics	Standards	Unit	LVT Rápport
Type of floorcovering	EN ISO 10582		Heterogeneous, PVC
Surface treatment			PUR
Total weight	EN ISO 23997	g/m ²	4290
Performance classification	EN ISO 10874		23,33,42**
Gauge	EN ISO 24346	mm	2.5
Wear layer thickness	EN ISO 24340	mm	0.55
Packaging plank size	EN ISO 24342	mm	15 @ 184.2 x 1219.2 = 3.37m ²
Packaging size recycled wood designs	EN ISO 24342	mm	12 @ 76.2 x 914.4 = 3.62m ² 12 @ 101.6 x 914.4 = 3.62m ² 12 @ 152.4 x 914.4 = 3.62m ²
Packaging tile size	EN ISO 24342	mm	8 @ 457.2 x 914.4 = 3.34m ²
Packaging size mixed sized tiles	EN ISO 24342	mm	12 @ 152.4 x 609.6 = 3.34m ² 12 @ 304.8 x 304.8 = 3.34m ² 6 @ 304.8 x 609.6 = 3.34m ²
Dimensional stability	EN ISO 23999	%	<0.1
Residual indentation	EN ISO 24343-1	mm	0.05***
Colour fastness to artificial light	EN ISO 105-B02	level	≥6
Behaviour to fire	EN 13501-1		Bfl-s1
Slip resistance	DIN 51130		R10
	EN 13893		DS
	AS 4586		R10
Impact sound reduction	EN ISO 10140-3	dB	2
Resistance to thermal conductivity	EN 12667	m ² k/w	0.02
	ISO 8302	m ² k/w	0.02
Assessment of static electricity propensity	EN 1815	kV	<2
Chemical resistance	EN ISO 26987		*
Abrasion resistance	EN ISO 10582		Type I
	EN 660-2		yes, Type W, EN 12 529
Castor chair suitability	ISO 4918		Yes
Underfloor heating suitability	EN 1264-2		suitable max. 27°C
VOC emissions	Indoor Air Comfort Gold		Eurofins certified product
	FloorScore		Certified product
	AgBB		Very low emissions
Environmental product declaration	EN 15804		DGNB Navigator www.dgnb-navigator.de

* Resistant depending on concentration and time or exposure, in case of increased impact of oils, grease, acids, alkalis and other aggressive chemicals please contact us.

** Heavy rolling loads to be avoided

*** Averaged test value from current production



DESIGN LOOP

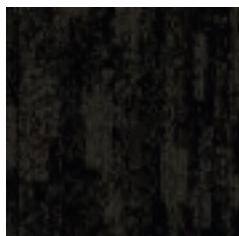
Phase
Mesh
Greda
Cresta
Highlights
Total Contrast
Vapour
Draco
DesignDek
Strobe
Codec
Workspace Linear

PHASE





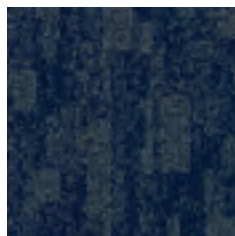
3627B Navajo Brown
(LRV - Y3.24)



1648B Charged Metal
(LRV - Y2.69)



8677B Virtual Ebony
(LRV - Y2.87)



6658B Cloud Indigo
(LRV - Y5.07)



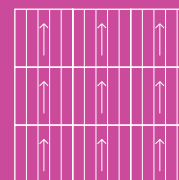
8675B Gainsboro
(LRV - Y6.13)



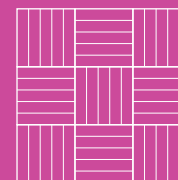
6657B Dodger Blue
(LRV - Y2.78)

Style	1/12th Gauge
Yarn Construction	100% Solution Dyed Nylon
Pile Yarn Weight	610 gsm
Pile Height	2.5mm - 5.5mm
Total Weight	4,420 gsm for Standard Envirobase
Total Thickness	7mm +/- 0.5mm
Backing	100% Envirobase - minimum of 75% recycled material
Additional Backing	100% Komfort Bac available on request
Dimensions	50cm x 50cm
Wear Classification	Heavy Contract Class 33
Luxury Class	LC1
Anti-static	< 2kV body voltage. Suitable for use with computers
Colour Fastness	To Light (ISO105 - BO2) > 5 To Water (ISO 105 - E01) > 4 To Rubbing (ISO 105 - X12) > 4
Flammability	Floorcoverings tested to BS4790 (Hot Metal Nut Test) Low Radius of CharBFI-s1
Castor Chair Test	BS EN 985 r value 2.8 continuous use 10 Year Warranty
Voc Content	E1 in relation to EN 14041:2004

TOTAL COLOURWAY OPTIONS 6



BROADLOOM DESIGN



TESSELLATED DESIGN

AVAILABLE FROM STOCK



MADE IN BRITAIN

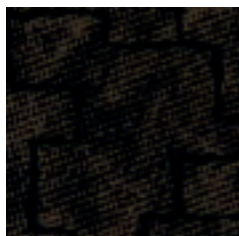
Tile colours representative in print, order a full tile for true likeness.

MESH

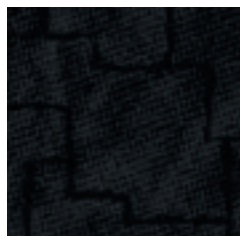




1745L Burly Wood
(LRV - Y8.43)



9748L Satin Ash
(LRV - Y4.20)



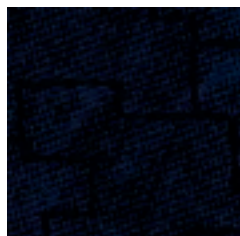
8778L Shadow Bone
(LRV - Y3.11)



8773L Sonic Coal
(LRV - Y12.69)



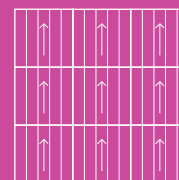
8775L Obsidian Flash
(LRV - Y5.10)



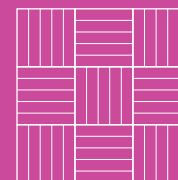
6755L Mild Sienna
(LRV - Y2.04)

Style	1/10th Gauge
Yarn Construction	100% Solution Dyed Nylon
Pile Yarn Weight	750 gsm
Pile Height	2.5 mm / 5.5mm
Total Weight	4,570 gsm for Standard Envirobase
Total Thickness	7mm +/- 0.5mm for Standard Envirobase
Backing	100% Envirobase - minimum of 75% recycled material
Additional Backing	100% Komfort Bac available on request
Dimensions	50cm x 50cm
Wear Classification	Heavy Contract
Luxury Class	LC1
Anti-static	< 2kV body voltage. Suitable for use with computers
Colour Fastness	To Light (ISO105 - B02) > 5 To Water (ISO 105 - E01) > 4 To Rubbing (ISO 105 - X12) > 4
Flammability	Floorcoverings tested to BS4790 (Hot Metal Nut Test) Low Radius of Char BFI-s1
Castor Chair Test	BS EN 985 r value 2.8 continuous use
Warranty	10 Year Warranty
Voc Content	E1 in relation to EN 14041:2004

TOTAL COLOURWAY OPTIONS 6



BROADLOOM DESIGN



TESSELLATED DESIGN

AVAILABLE FROM STOCK



MADE IN BRITAIN

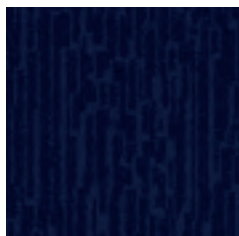
Tile colours representative in print, order a full tile for true likeness.

GREDA





3730V Moccasin
(LRV - Y10.37)



6755V Electric Azure
(LRV - Y3.77)



5761V Lime Spring
(LRV - Y24.37)



1763V Cracked Station
(LRV - Y12.20)



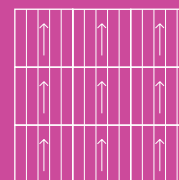
8773V Livid Grey
(LRV - Y10.40)



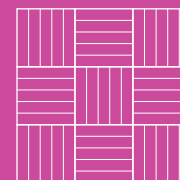
8775V Ghost Machine
(LRV - Y4.19)

Style	1/12th Gauge
Yarn Construction	100% Solution Dyed Nylon
Pile Yarn Weight	750 gsm
Pile Height	3mm - 6.5mm
Total Weight	4,570 gsm for Envirobase
Total Thickness	4,570 gsm for Envirobase
Backing	100% Envirobase - minimum of 75% recycled material
Additional Backing	100% Komfort Bac available on request
Dimensions	50cm x 50cm
Wear Classification	Heavy Contract
Luxury Class	LC1
Anti-static	< 2kV body voltage. Suitable for use with computers
Colour Fastness	To Light (ISO105 - BO2) > 5 To Water (ISO 105 - E01) > 4 To Rubbing (ISO 105 - X12) > 4
Flammability	Floorcoverings tested to BS4790 (Hot Metal Nut Test) Low Radius of Char BFI-s1
Castor Chair Test	BS EN 985 r value 2.8 continuous use
Warranty	10 Year Warranty
Voc Content	E1 in relation to EN 14041:2004

TOTAL COLOURWAY OPTIONS 6



BROADLOOM DESIGN



TESSELLATED DESIGN

AVAILABLE
FROM STOCK



MADE IN BRITAIN

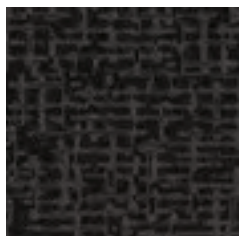
Tile colours representative in print, order a full tile for true likeness.

CRESTA





1746N Lucent Grey
(LRV - Y7.63)



9749N Bear Silver
(LRV - Y4.15)



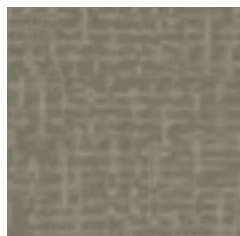
6755N Glam Cyan
(LRV - Y3.60)



9778N Castle Black
(LRV - Y1.91)



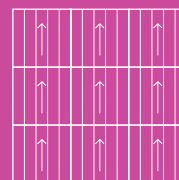
8779N Silver Wolf
(LRV - Y3.94)



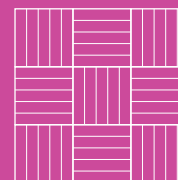
1790N Polar Trek
(LRV - Y18.94)

Style	1/12th Gauge
Yarn Construction	100% Solution Dyed Nylon
Pile Yarn Weight	750 gsm
Pile Height	3mm / 5mm
Total Weight	4,570 gsm for Envirobase
Total Thickness	7mm +/- 0.5mm for Envirobase
Backing	100% Envirobase - minimum of 75% recycled material
Additional Backing	100% Komfort Bac available on request
Dimensions	50cm x 50cm
Wear Classification	Heavy Contract-
Luxury Class	LC1
Anti-static	< 2kV body voltage. Suitable for use with computers
Colour Fastness	To Light (ISO105 - B02) > 5 To Water (ISO 105 - E01) > 4 To Rubbing (ISO 105 - X12) > 4
Flammability	Floorcoverings tested to BS4790 (Hot Metal Nut Test) Low Radius of Char BFI-s1
Castor Chair Test	BS EN 985 r value 2.8 continuous use
Warranty	10 Year Warranty
Voc Content	E1 in relation to EN 14041:2004

TOTAL COLOURWAY OPTIONS 6



BROADLOOM DESIGN



TESSELLATED DESIGN

AVAILABLE
FROM STOCK



MADE IN BRITAIN

Tile colours representative in print, order a full tile for true likeness.

HIGHLIGHTS





Cutpile 4
7414 (LRV - Y4)



Low Level
4211 (LRV - Y19)



Structured 2
4212 (LRV - Y16)



Multi-level 3
42413 (LRV - Y22)



Multi-level 3
42403 (LRV - Y44)



Strobe 5
2619 (LRV - Y6.09)



Cutpile 4
4214 (LRV - Y19)



Low Level
5601 (LRV - Y16)



Structured 2
5602 (LRV - Y13)



Multi-level 3
56693 (LRV - Y13)



Multi-level 3
23813 (LRV - Y8)



Strobe 5
2604 (LRV - Y5.11)



Cutpile 4
5604 (LRV - Y17)



Low Level
6551 (LRV - Y7)



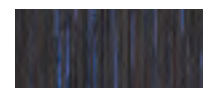
Structured 2
6552 (LRV - Y6)



Multi-level 3
56493 (LRV - Y12)



Multi-level 3
65123 (LRV - Y3)



Strobe 5
2620 (LRV - Y4.24)



Cutpile 4
6554 (LRV - Y6)



Low Level
3251 (LRV - Y12)



Structured 2
3252 (LRV - Y11)



Multi-level 3
33753 (LRV - Y17)



Strobe 5
2603 (LRV - Y4.29)



Cutpile 4
3254 (LRV - Y15)



Low Level
5651 (LRV - Y9)



Structured 2
5652 (LRV - Y9)



Multi-level 3
74823 (LRV - Y5)



Strobe 5
2614 (LRV - Y7.47)



Cutpile 4
5654 (LRV - Y10)



Low Level
6501 (LRV - Y8)



Structured 2
6502 (LRV - Y6)



Multi-level 3
65803 (LRV - Y5)



Strobe 5
2605 (LRV - Y5.53)



Cutpile 4
6504 (LRV - Y6)



Low Level
2301 (LRV - Y6)



Structured 2
2302 (LRV - Y6)



Multi-level 3
23953 (LRV - Y4)



Strobe 5
2606 (LRV - Y4.97)



Cutpile 4
2304 (LRV - Y6)



Low Level
7451 (LRV - Y6)



Structured 2
7452 (LRV - Y4)



Multi-level 3
74313 (LRV - Y6)



Strobe 5
2621 (LRV - Y4.57)



Cutpile 4
7454 (LRV - Y3)



Low Level
7411 (LRV - Y6)



Structured 2
7412 (LRV - Y5)



Multi-level 3
23173 (LRV - Y8)



Strobe 5 -
(Accent colour for all colourways)
8226 (LRV - Y4.69)

HIGHLIGHTS

LOW-LEVEL 1

Style

Tufted loop pile 1/10

Yarn Construction

100% PA 6 Aqualon™

Pile Yarn Weight

530 gsm

Pile Height

6mm

Pile Density

160,000 tufts per m²

Total Weight

4650 gsm

Total Thickness

6mm

Backing

Bitumen

Dimensions

50cm x 50cm

Wear Classification

Heavy Contract 33-LC1

Anti-static

Suitable for use with computers.
Less than 2Kv

Colour Fastness

To Light (BS EN ISO105-B02) 5 - 6
To Water (BS EN ISO105-E01) 4
To Rubbing (BS EN ISO105-X12) 4
Flammability BFL-S1 EN 13501-1

Castor Chair Test

BS EN 985 2.4 Suitable for use with castor chairs
continuous use

Warranty

10 Years

VOC Content E1 in relation to EN 14041:2004

STRUCTURED 2

Style

Tufted loop pile 1/10

Yarn Construction

100% Polyamide

Pile Yarn Weight

850 gsm

Pile Height

3.5mm

Pile Density

104,000 tufts per m²

Total Weight

600 gsm

Total Thickness

7mm

Backing

Bitumen

Dimensions

50cm x 50cm

Wear Classification

Heavy Contract

Anti-static

Suitable for use with computers.
Less than 2Kv

Colour Fastness

To Light (BS EN ISO105-B02) 5
To Water (BS EN ISO105-E01) 4
To Rubbing (BS EN ISO105-X12) 4

Flammability

BFL-S1 EN 13501-1

Castor Chair Test

BS EN 985 2.4 Suitable for use with castor chairs
continuous use

Warranty

10 Years

VOC Content E1 in relation to EN 14041:2004

MULTI-LEVEL 3

Style

Tufted 1/12" Loop

Yarn Construction

100% PA6 Aqualon

Pile Yarn Weight

870 gsm

Pile Height

4.1mm

Pile Density

240,000 g/cm³

Total Weight

4800 gsm

Total Thickness

7.7mm

Backing

Bitumen

Dimensions

50cm x 50cm

Wear Classification

Heavy Contract

Anti-static

Suitable for use with computers.
Less than 2Kv

Colour Fastness

To Light (BS EN ISO105-B02) 5
To Water (BS EN ISO105-E01) 4
To Rubbing (BS EN ISO105-X12) 4

Flammability

BFL-S1 EN 13501-1

Castor Chair Test

BS EN 985 2.4 Suitable for use with castor chairs
continuous use

Warranty

10 Years

VOC Content E1 in relation to EN 14041:2004

CUTPILE 4

Style

Tufted 1/10 Frisé Cutpile

Yarn Construction

100% PA 6.6 Antron™

Pile Yarn Weight

1050 gsm

Pile Height

5mm

Pile Density

181,102 tufts per m²

Total Weight

4650 gsm

Total Thickness

8mm

Backing

Bitumen

Dimensions

50cm x 50cm

Wear Classification

Heavy Contract

Anti-static

Suitable for use with computers.
Less than 2Kv

Colour Fastness

To Light (BS EN ISO105-B02) 5
To Water (BS EN ISO105-E01) 4
To Rubbing (BS EN ISO105-X12) 4

Flammability

BFL-S1 EN 13501-1

Castor Chair Test

BS EN 985 2.4 Suitable for use with castor chairs
continuous use

Warranty

10 Years

VOC Content E1 in relation to EN 14041:2004

STROBE 5

Style

1/10" gauge

Yarn Construction

Solution Dyed / Space Dyed

Pile Yarn Weight

610 gsm (8226 580gsm)

Pile Height

3mm

Total Weight

4390 gsm

Total Thickness

6mm

Backing

Bitumen

Dimensions

50cm x 50cm

Wear Classification

Heavy Contract

Anti-static

< 2kV body voltage
Suitable for use with computers

Colour Fastness

To Light (ISO105 - B02) > 6
To Water (ISO 105 - E01) > 5
To Rubbing (ISO 105 - X12) > 5 dry 4-5 wet

Flammability

Flammability (BS5287) Assessment and labeling
of Textile Floor coverings tested to BS4790
Low radius of Char
(Hot Metal Nut Test) CE Flam rating - Bfl-s1

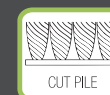
Castor Chair Test

BS EN 985 continuous use

Warranty

10 Years

VOC Content E1 in relation to EN 14041:2004

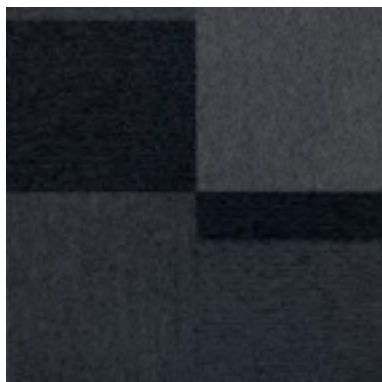


BREEAM® 'A+' Rated

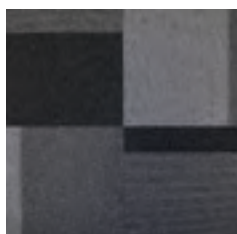
TOTAL CONTRAST



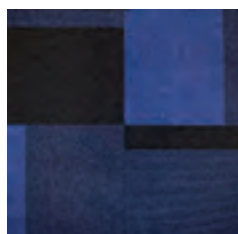
TOTAL CONTRAST
CHROME PELT & BLACK LEAF



91826 - Palladium Sky
(LRV - Y3.74)



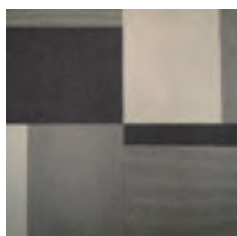
83126 - Chrome Pelt
(LRV - Y8.51)



64518 - Ocean Rocks
(LRV - Y3.01)



52926 - Black Leaf
(LRV - Y11.81)



10001 - Cracked Sapling
(LRV - Y14.99)



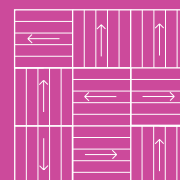
10203 - Mellow Bark
(LRV - Y11.69)

Colourways show 1sqm for pattern effect

Style	Tufted Loop Pile Tile 1/10" gauge
Yarn Construction	ECONYL
Pile Yarn Weight	600 gsm
Pile Height	3mm
Pile Density	172,000 tufts per m2
Total Weight	4380gsm
Total Height	6mm
Backing	100% Envirobase - minimum of 75% recycled material
Additional Backing	100% Komfort Bac available on request
Dimensions	50cm x 50cm
Wear Classification	Heavy Contract Class 33
Luxury Class	LC1
Anti-static	<2Kv body voltage. Suitable for use with computers
Colour Fastness	To Light (BS EN ISO105-B02) Better than 6 To Shampoo BS 1006 - UK - TB Change in shade 4 - 5 To Rubbing (BS EN ISO105-X12) Wet 4 - 5, Dry 4 - 5
Flammability	BS EN 13501 Fire Classification Bfl-s1
Castor Chair Test	BS EN 985 r value 2.8 Suitable for continuous use
Warranty	10 Year Warranty
VOC Content	E1 in relation to EN 14041:2004
Environmental Status	Breem® 'A+' Rated
Total Contrast is a random lay product	

TOTAL COLOURWAY OPTIONS - 6

TOTAL RECYCLED CONTENT OF UP TO 80%



RANDOM LAY DESIGN

Made with 100% Regenerated Nylon
ECONYL®

AVAILABLE
FROM STOCK



BREEAM® 'A+' Rated

Tile colours representative in print, order a full tile for true likeness.





The **ECONYL**® Regeneration System

"The **ECONYL**® Regeneration System is based not only on the development of a new technology but also the creation of a new supply chain specialized in the recovery of waste worldwide. The **ECONYL**® Regeneration System is:

Infinite, as the Polyamide 6 waste can be regenerated an infinite number of times to produce new polymers with technical characteristics and quality equivalent to products obtained from fossil materials.

Innovative, as it is the only system of its kind anywhere in the world in terms of efficiency and productivity.

Sustainable, as it recovers waste which would otherwise end up in landfills or oceans (fishing nets), causing serious damage to the entire ecosystem. It also enables real savings in terms of CO2 emissions. Compared to common Nylon 6, **ECONYL**® fiber has a reduction of approx. 50% of CO2 equivalent emissions /kg yarn.



The 4-Step Regeneration Cycle

The **ECONYL**® regeneration process is actually made up of six complex but crucial steps, which all come together to form an ongoing cycle of eco-friendly commitment.

Waste rescue

It all begins with the collection of the valuable waste materials that have been deposited in various landfills and dumping grounds turning one man's trash, into **ECONYL**® treasure. The waste collection network hunts out hidden gems with a high percentage of Nylon, and rescues them from the wreckage ready for preparation.

Depolymerisation

This long, complicated-sounding work basically describes a unique chemical process by which the complex waste materials are then purified and reduced to non-complex raw materials. **ECONYL**® through their continually improving ethos, have reduced the water and energy actually required during the process meaning it produces far more Nylon than it does waste. This is a term coined as 'waste positive' in action!

Transformation

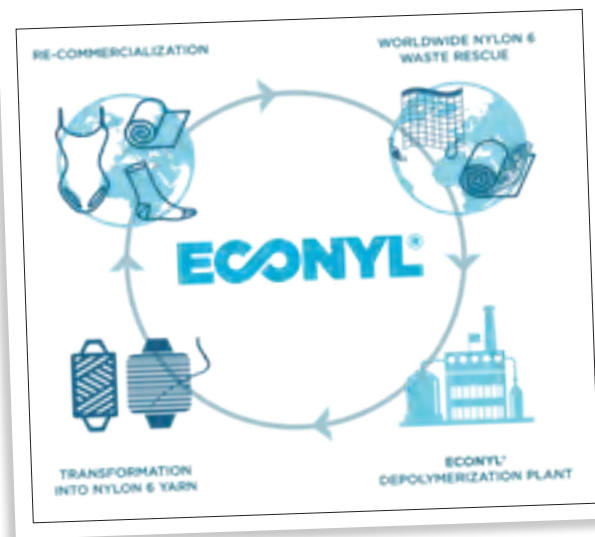
After being rescued, treated, purified and reduced, the Nylon 6 polymers are then distributed to production facilities all over the world where they are processed into BCF yarns and NTF yarns.

Re-commercialisation

Both yarns can now be marketed to customers as a variety of products and in our case – BCF yarns products can be found in a wide range of applications such as carpets, carpet tiles, rugs, upholstery, automotive floorings and mats. It is this system that means we can provide you with a ethically sourced and eco-responsible tile for your commercial spaces.



Scan the QR code to view a Journey into the **ECONYL**® Regeneration System



A Journey Into The **ECONYL**® Regeneration System

The **ECONYL**® Regeneration System is a unique process that allows Aquafil to produce 100% regenerated Nylon yarn using waste material instead of fossil raw material. The **ECONYL**® regenerated yarn is now used by the most important brands in the carpet and fashion industries.





TOTAL CONTRAST
OCEAN ROCKS

VAPOUR



VAPOUR
STEAM



34465 Nebula
(LRV - Y13.88)



63845 Spray
(LRV - Y6.18)



84558 Steam
(LRV - Y13.19)



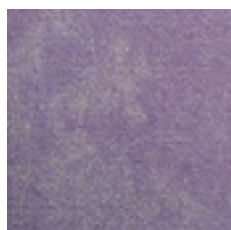
82145 Halo
(LRV - Y4.93)



63852 Mist
(LRV - Y6.20)



63243 Aura
(LRV - Y4.06)



74558 Humidity
(LRV - Y6.88)



28382 Fog
(LRV - Y9.32)



54584 Spectre
(LRV - Y9.65)



54516 Cloud
(LRV - Y11.00)

Style Tufted

Yarn Construction

Pile Yarn Weight

Pile Height

Total Weight

Total Thickness

Backing

Dimensions

Wear Classification

Luxury Class

Anti-static

Colour Fastness

Flammability

Castor Chair Test

Warranty

VOC Content

Environmental Status

Structured Loop Pile

Antron Lumena SD 6.6 Nylon

Antron Solution Dyed Nylon 6.6

650 gsm

2.5mm +/- 0.5mm

4,140 gsm

6 mm +/- 0.5mm

100% Envirobase - minimum of 75% recycled material

50cm x 50cm

Class 33

LC1

Less than 2Kv

Suitable for use with computers

Light BS EN ISO105-BO2

Better than 6

To Water BS EN ISO105-E01 4-5

To Shampoo BS 1006-UK-TB 4-5

Rubbing BS EN ISO105-X12 4-5

BS 4790 Low Radius of Char

Euroclass Flammability Cfl-s1

(BS EN 13501)

BS EN 985 Overall r value > 2.4

10 Year Warranty

E1 in relation to EN 14041:2004

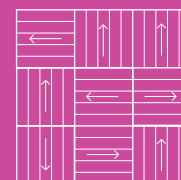
Breeam® 'A+' Rated

TOTAL COLOURWAY OPTIONS - 10

SUITABLE FOR OFFICES, RETAIL, SCHOOLS, COLLEGES AND LEISURE

RECYCLABLE - PRODUCT CAN BE REPURPOSED AT THE END OF ITS LIFECYCLE AS A NON STANDARD OPTION

UP TO 55% OF THE TOTAL PRODUCT IS RECYCLED CONTENT



RANDOM LAY DESIGN

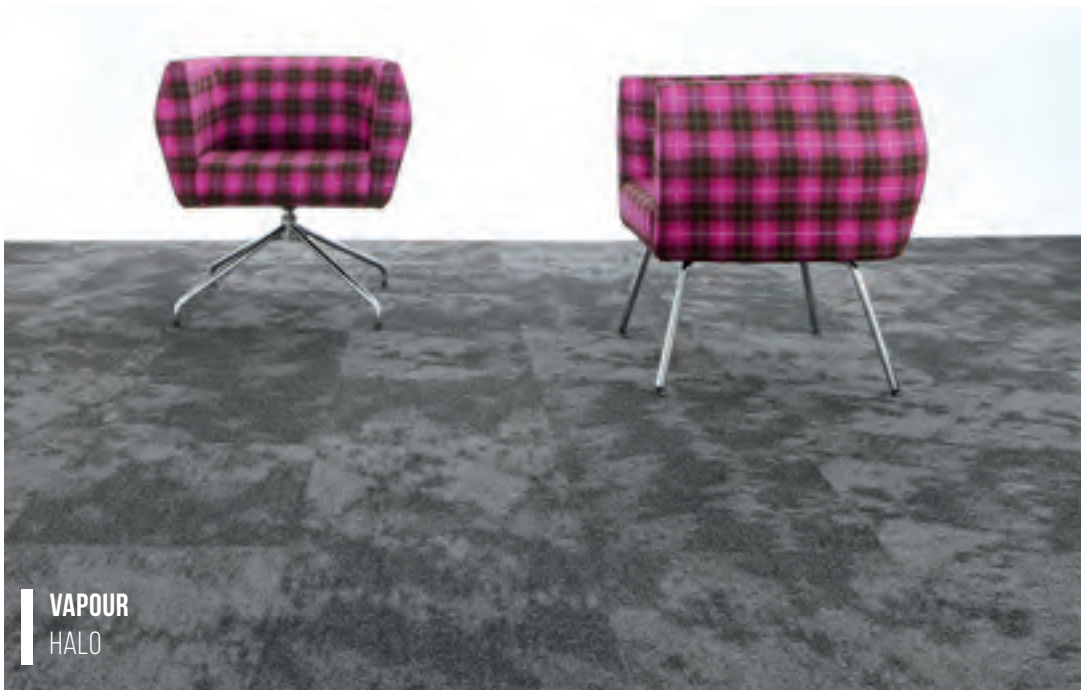
AVAILABLE
FROM STOCK

MADE IN BRITAIN

antron. 

BREEAM® 'A+' Rated

Tile colours representative in print, order a full tile for true likeness.



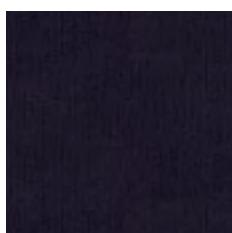


DRACO (MADE TO ORDER)

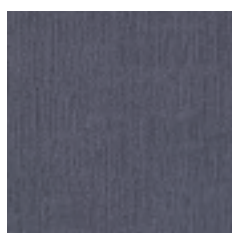




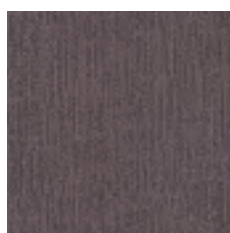
Juza
(LRV - Y18.53)



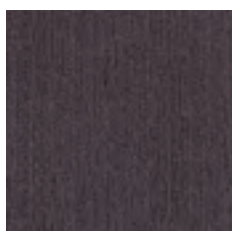
Errakis
(LRV - Y1.77)



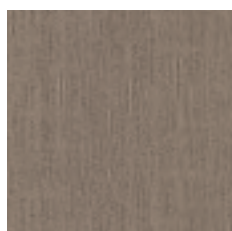
Thuban
(LRV - Y5.59)



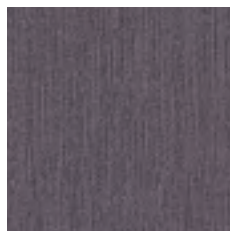
Struve
(LRV - Y6.32)



Keplar
(LRV - Y3.30)



Eltanin
(LRV - Y10.92)



Kuma
(LRV - Y7.51)



Asuia
(LRV - Y18.66)



Tyl
(LRV - Y7.02)



Adib
(LRV - Y4.74)

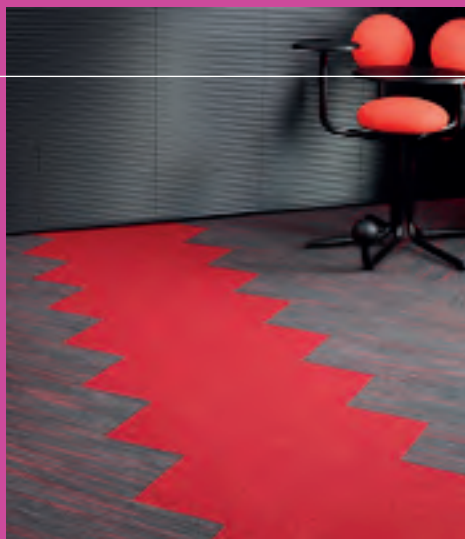
Yarn Construction	Universal Nylon 6.6
Pile Height	4.5mm / 3.0mm
Backing	Bitumen
Dimensions	50cm x 50cm
Wear Classification	Heavy Contract
Anti-static	Less than 2kV
Flammability	Cfl-s1
Castor Chair Test	BS EN 985 continuous use
Warranty	10 Years
VOC Content	E1 in relation to EN 14041:2004

TOTAL COLOURWAY OPTIONS - 10
UP TO 50% OF THE TOTAL PRODUCT IS RECYCLED CONTENT

NOTE : Results are based on internal testing of new unused products

Tile colours representative in print, order a full tile for true likeness.

DESIGNDEK DESIGN 1



Style	1/10" gauge
Yarn Construction	100% solution dyed nylon / space dyed
Pile Yarn Weight	610 gsm (Dek Fusion 580gsm)
Pile Height	5mm +/- 0.5mm
Total Weight	4390 gsm (Tile)
Total Thickness	6mm (Tile)
Backing	Bitumen
Dimensions	100cm x 25cm
Wear Classification	Heavy Contract
Anti-static	< 2Kv body voltage. Suitable for use with computers
Colour Fastness	To Light (ISO105 - B02) > 6 To Water (ISO 105 - E01) > 5 To Rubbing (ISO 105 - X12) > 5 dry 4-5 wet
Flammability	BS 4790 (Hot Metal Nut) Low Radius of Char BS EN 13501-1 Bfl-s1
Castor Chair Test	BS EN 985 continuous use
Warranty	10 Years
VOC Content	E1 in relation to EN 14041:2004

DESIGNDEK DESIGN 2



Style	Tufted Loop Pile 1/10" gauge
Yarn Construction	100% solution dyed nylon
Pile Yarn Weight	580 gsm
Pile Height	3mm
Total Weight	4360 gsm
Total Thickness	6mm (Tile)
Backing	Bitumen
Dimensions	100cm x 25cm
Wear Classification	Heavy Contract
Anti-static	< 2Kv body voltage. Suitable for use with computers
Colour Fastness	To Light BS EN (ISO105 - B02) Better than 6 To Shampoo BS 1006 - UK - TB Change in shade 4 - 5 To Rubbing BS EN (ISO105 -X12) Wet 4 - 5, Dry 4 - 5
Flammability	BS 4790 (Hot Metal Nut) Low Radius of Char BS EN 13501-1 Bfl-s1
Castor Chair Test	BS EN 985 / 2.8
Warranty	10 Years
VOC Content	E1 in relation to EN 14041:2004

DESIGNDEK DESIGN 3

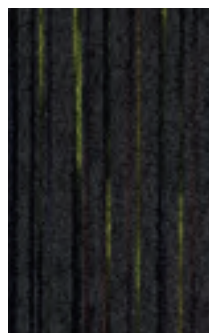


Style	Tufted Loop Pile 1/10" gauge
Yarn Construction	100% solution dyed nylon
Pile Yarn Weight	600 gsm
Pile Height	3mm
Total Weight	4380 gsm
Total Thickness	6mm (Tile)
Backing	Bitumen
Dimensions	100cm x 25cm
Wear Classification	Heavy Contract
Anti-static	< 2Kv body voltage. Suitable for use with computers
Colour Fastness	To Light BS EN (ISO105 - B02) Better than 6 To Shampoo BS 1006 - UK - TB Change in shade 4 - 5 To Rubbing BS EN (ISO105 - X12) Wet 4 - 5, Dry 4 - 5
Flammability	BS 4790 (Hot Metal Nut) Low Radius of Char BS EN 13501-1 Bfl-s1
Castor Chair Test	BS EN 985 r value 2.8 Suitable for continuous use
Warranty	10 Years
VOC Content	E1 in relation to EN 14041:2004

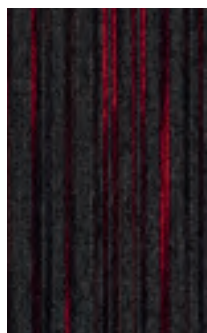
DesignDek 1



Dek Extreme
(LRV - Y5.11)



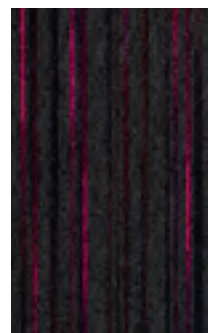
Dek Flex
(LRV - Y4.97)



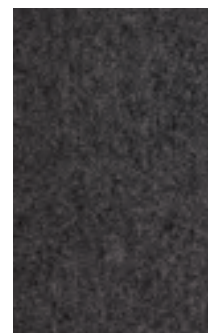
Dek Blaze
(LRV - Y4.24)



Dek Plasma
(LRV - Y4.29)

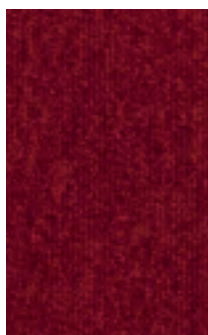


Dek Spark
(LRV - Y4.57)



Dek Fusion
(LRV - Y4.69)

DesignDek 2



Dek Ruby
(LRV - Y5.35)



Dek Dark Blue
(LRV - Y4.62)



Dek Apple
(LRV - Y21.82)



Dek Smoke
(LRV - Y17.50)



Dek Onyx
(LRV - Y2.47)

DesignDek 3



Dek Hex Accent
(LRV - Y7.22)

DesignDek

- 1 SUITABLE FOR OFFICE, COMMERCIAL, RETAIL, SCHOOLS, COLLEGES AND LEISURE
610 GSM (DEK FUSION 580GSM) PILE YARN WEIGHT
- 2 PARAGON MANUFACTURES IN THE CLEANEST CARPET TILE FACTORY IN EUROPE
COMMERCIAL, EDUCATION, HEALTH AND RETAIL MARKETS
- 3 SUITABLE FOR COMMERCIAL, EDUCATION, HEALTH AND RETAIL MARKETS

Tile colours representative in print, order a full tile for true likeness.

NOTE : Results are based on internal testing of new unused products

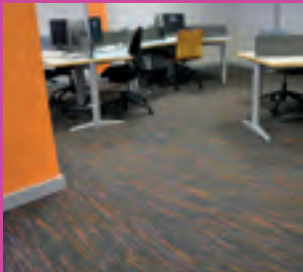
BREEAM® 'A+' Rated



STROBE

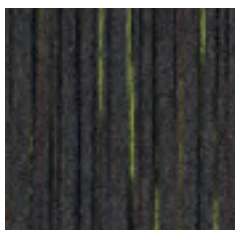


STROBE
SPARK

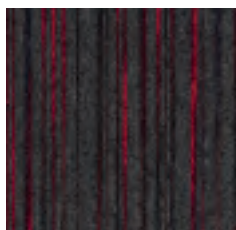




Spark 2621
(LRV - Y4.57)



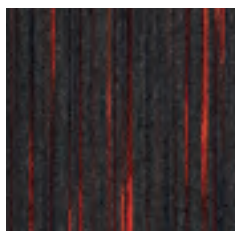
Flex 2620
(LRV - Y4.97)



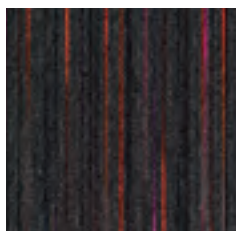
Blaze 2604
(LRV - Y4.24)



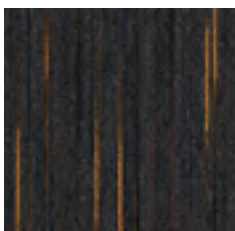
Extreme 2606
(LRV - Y5.11)



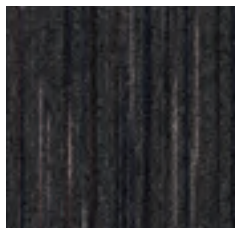
Ignite 2603
(LRV - Y6.09)



Rapid 2614
(LRV - Y5.53)



Force 2605
(LRV - Y7.47)



Plasma 2619
(LRV - Y4.29)



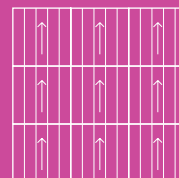
Grey Fusion Highlight
(Accent colour for all colourways)
(LRV - Y4.69)

Style	1/10" gauge
Yarn Construction	Solution Dyed / Space Dyed
Pile Yarn Weight	610 gsm (Grey Fusion 580gsm)
Pile Height	3mm
Total Weight	4400 gsm
Total Thickness	6mm
Backing	100% Envirobase - minimum of 75% recycled material
Additional Backing	100% Komfort Bac available on request
Dimensions	50cm x 50cm
Wear Classification	Heavy Contract Class 33
Luxury Class	LC1
Anti-static	< 2kV body voltage Suitable for use with computers
Colour Fastness	To Light (ISO105 - B02) > 6 To Water (ISO 105 - E01) > 5 To Rubbing (ISO 105 - X12) > 5 dry 4-5 wet
Flammability	BS 4790 Low radius of char BS EN 13501-1 Bfl-s1
Castor Chair Test	BS EN 985 continuous use
Warranty	10 Year Warranty
VOC Content	E1 in relation to EN 14041:2004
Environmental Status	Breem® 'A+' Rated

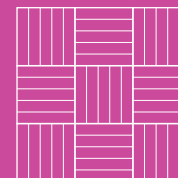
TOTAL COLOURWAY OPTIONS - 8+1

SUITABLE FOR OFFICE, COMMERCIAL, RETAIL, SCHOOLS, COLLEGES AND LEISURE

UP TO 50% OF THE TOTAL PRODUCT IS RECYCLED CONTENT



BROADLOOM DESIGN



TESSELLATED DESIGN

AVAILABLE FROM STOCK



MADE IN BRITAIN

BREEM® 'A+' Rated

Tile colours representative in print, order a full tile for true likeness.



STROBE
FLEX



STROBE
FORCE



STROBE
EXTREME



STROBE
FLEX

CODEC





5151 – Pathway
(LRV - Y11.59)



5229 – Accent Pathway
(LRV - Y21.82)



6181 – Digital
(LRV - Y4.32)



6176 – Accent Digital
(LRV - Y4.62)



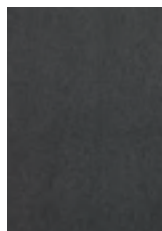
2181 – Index
(LRV - Y4.60)



2247 – Accent Index
(LRV - Y7.73)



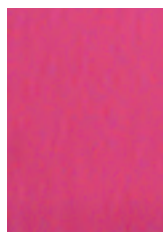
8181 – Axis
(LRV - Y4.00)



8228 – Accent Axis
(LRV - Y5.78)



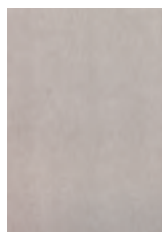
7181 – Hex
(LRV - Y4.77)



7248 – Accent Hex
(LRV - Y7.22)



9191 – Binary
(LRV - Y9.59)



9183 – Accent Binary
(LRV - Y17.50)

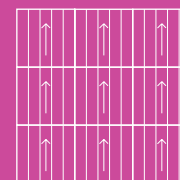
Style	Tufted Loop Pile Tile 1/10" gauge
Yarn Construction	100% solution dyed nylon
Pile Yarn Weight	600 gsm
Pile Height	3mm
Total Weight	4380 gsm
Total Thickness	6mm
Backing	100% Envirobase - minimum of 75% recycled material
Additional Backing	100% Komfort Bac available on request
Dimensions	50cm x 50cm
Wear Classification	Heavy Contract Class 33
Luxury Class	LC1
Anti-static	<2Kv body voltage. Suitable for use with computers
Colour Fastness	To Light (BS EN ISO105-B02) Better than 6 To Shampoo BS 1006 - UK - TB Change in shade 4 - 5 To Rubbing (BS EN ISO105-X12) Wet 4 - 5, Dry 4 - 5
Flammability	Floorcoverings tested to BS4790 Low Radius of Char Euroclass Flammability Bfl-s1 (BS EN 13501)
Castor Chair Test	BS EN 985 r value 2.8 Suitable for continuous use
Warranty	10 Years
VOC Content	E1 in relation to EN 14041:2004
Environmental Status	Breem® 'A+' Rated

TOTAL COLOURWAY OPTIONS - 12

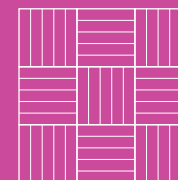
SUITABLE FOR COMMERCIAL, EDUCATION, HEALTH AND RETAIL MARKETS

RECYCLABLE - PRODUCT CAN BE REPURPOSED AT THE END OF ITS LIFECYCLE AS A NON STANDARD OPTION

TOTAL RECYCLED CONTENT OF UP TO 65%



BROADLOOM DESIGN



TESSELLATED DESIGN

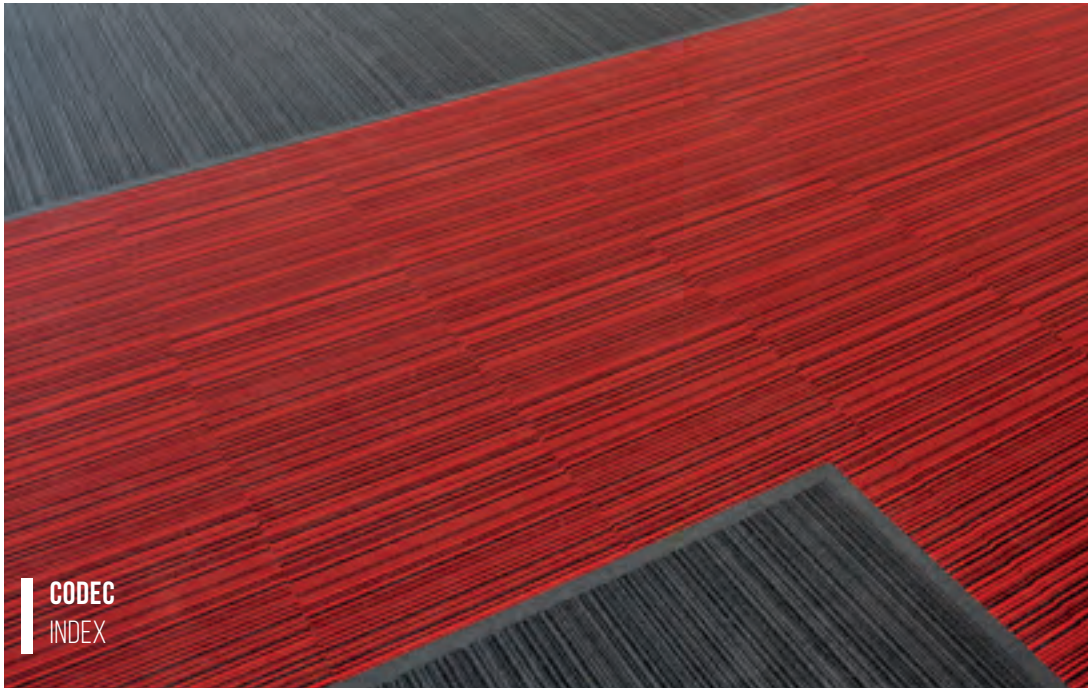
AVAILABLE FROM STOCK



MADE IN BRITAIN

BREEM® 'A+' Rated

Tile colours representative in print, order a full tile for true likeness.





WORKSPACE LINEAR





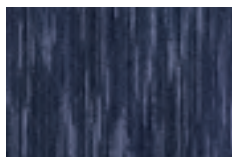
7002 - Nobu Grey
(LRV - Y15.67)



5004 - Apollo Blue
(LRV - Y4.42)



4009 - Clockhouse Blue
(LRV - Y3.72)



4018 - Regents Canal
(LRV - Y5.12)



7005 - Savoy Ochre
(LRV - Y15.80)



7017 - Alber Green
(LRV - Y13.09)



5009 - Metro Blue
(LRV - Y3.50)



5181 - Victoria Blue
(LRV - Y2.92)



3013 - Docklands Grey
(LRV - Y9.01)



3193 - Beauchamp Brown
(LRV - Y6.53)



3016 - Westow Park Plum
(LRV - Y7.50)



3001 - Millennium Blue
(LRV - Y8.18)



3012 - Broadway
(LRV - Y8.17)



5014 - Islington Tunnel
(LRV - Y5.54)



7008 - West End Fawn
(LRV - Y10.09)

Style

Yarn Construction

Pile Yarn Weight

Pile Height

Total Weight

Total Thickness

Backing

Additional Backing

Dimensions

Wear Classification

Luxury Class

Anti-static

Colour Fastness

Flammability

Castor Chair Test

Warranty

VOC Content

Environmental Status

Tufted Loop Pile Tile 1/10" gauge

100% solution dyed nylon/space dyed nylon

600 gsm

3mm

4380 gsm

6mm

100% Envirobase - minimum of 75% recycled material

100% Komfort Bac available on request

50cm x 50cm

Heavy Contract Class 33

LC1

< 2kV body voltage
Suitable for use with computers

To Light BS EN (ISO105 – BO2) 6
To Water BS EN (ISO105 – EO1) 4 - 5

Euroclass Flammability Bfl-s1
(BS EN 13501)

> 2.9 Suitable for continuous use
BS EN 985 /

10 Years

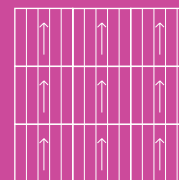
E1 in relation to EN 14041:2004

Breem® 'A+' Rated

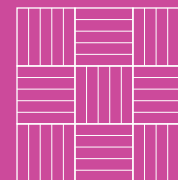
TOTAL COLOURWAY OPTIONS - 15

SUITABLE FOR OFFICE, COMMERCIAL, RETAIL,
SCHOOLS, COLLEGES, AND LEISURE

UP TO 50% RECYCLED CONTENT IN THE BITUMEN BACKING



BROADLOOM DESIGN



TESSELLATED DESIGN

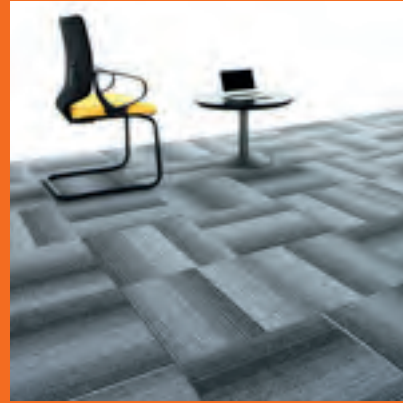
AVAILABLE
FROM STOCK



MADE IN BRITAIN

BREEM® 'A+' Rated

Tile colours representative in print, order a full tile for true likeness.



LOOP PILE

Workspace Loop
Diversity Groove
Diversity
Toccarre
Vital
Sirocco Stripe
Sirocco
Macaw Stripe
Macaw

WORKSPACE LOOP



Style	Tufted Loop Pile Tile 1/10" gauge
Yarn Construction	100% Solution Dyed Nylon
Pile Yarn Weight	580 gsm
Pile Height	3mm
Total Weight	4360 gsm
Pile Density	172,000 tufts per m2
Total Thickness	6mm
Backing	100% Envirobase - minimum of 75% recycled material
Additional Backing	100% Komfort Bac available on request
Dimensions	50cm x 50cm
Wear Classification	Heavy Contract Class 33
Luxury Class	LC1
Anti-static	<2Kv body voltage. Suitable for use with computers.
Colour Fastness	To Light (BO2) 6 Wet Rubbing (BS1006:B01) 4 - 5 Dry Rubbing (BS1006:X12) 4 - 5 Shampoo (BS1006:UK-TB) 4 - 5
Flammability	Floorcoverings tested to BS4790 Low Radius of Char Euroclass Flammability Bfl-s1 (BS EN 13501)
Castor Chair Test	BS EN 985 r value 2.9 Suitable for continuous use
Warranty	10 Years
VOC Content	E1 in relation to EN 14041:2004
Environmental Status	Breem® 'A+' Rated

TOTAL COLOURWAY OPTIONS - 20

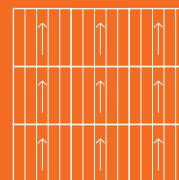
UP TO 10% RECYCLED CONTENT IN THE TOP CLOTH

UP TO 50% RECYCLED CONTENT IN THE BITUMEN BACKING

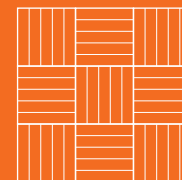
TOTAL RECYCLED CONTENT OF UP TO 60% WITH 10 YEAR WARRANTY

MANUFACTURED IN THE CLEANEST CARPET TILE FACTORY IN EUROPE

COMMERCIAL, EDUCATION, HEALTH AND RETAIL MARKETS



BROADLOOM DESIGN



TESSELLATED DESIGN

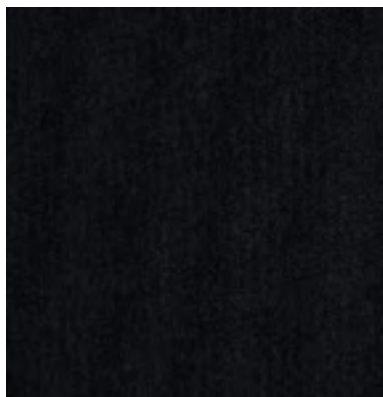
AVAILABLE
FROM STOCK



MADE IN BRITAIN

BREEM® 'A+' Rated

Tile colours representative in print, order a full tile for true likeness.



Onyx
(LRV - Y2.47)



Apple
(LRV - Y21.82)



Sandstone
(LRV - Y17.28)



Ruby
(LRV - 5.35)



Rose
(LRV - Y6.36)



Magenta Rock
(LRV - Y4.42)



Lavender
(LRV - Y8.20)



Blueberry
(LRV - Y8.61)



Moorland
(LRV - Y10.05)



Sepia
(LRV - Y7.20)



Charcoal
(LRV - 6.36)



Graphite
(LRV - 5.51)



Platinum
(LRV - Y8.62)



Silver
(LRV - Y13.24)



Midnight
(LRV - Y4.17)



Indigo
(LRV - Y4.37)



Blue Yonder
(LRV - Y4.05)



Blue Moon
(LRV - Y7.68)



Kingfisher
(LRV - Y10.12)



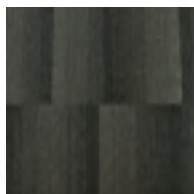
Pampas
(LRV - Y10.13)

DIVERSITY GROOVE





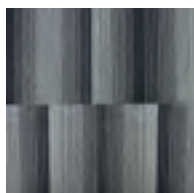
616812 Gusto
(LRV - Y3.57)



810820 Vibe
(LRV - Y8.04)



812810 Asha
(LRV - Y4.39)



812820 Armada
(LRV - Y5.31)



616810 Jaxx
(LRV - Y5.74)

Style	Tufted 1/10" Loop Pile Tile
Fibre Construction	100% Solution Dyed Nylon
Pile Yarn Weight	500 gsm
Pile Height	3mm
Total Weight	4280 gsm
Total Thickness	5.5mm (Tile)
Backing	100% Envirobase - minimum of 75% recycled material
Additional Backing	100% Komfort Bac available on request
Tile Size	50cm x 50cm
Wear Classification	Heavy Contract Class 33
Luxury Class	LC1
Anti-static	<2Kv body voltage. Suitable for use with computers
Static Load to BS 4939	Not less than 80% recovery after 24 hours
Colour fastness to BS1006	To Light (BS EN ISO105-B02) Better than 6 To Shampoo BS 1006 - UK - TB Change in shade 4 - 5 To Rubbing (BS EN ISO105-X12) Wet 4 - 5, Dry 4 - 5
Flammability	Floorcoverings tested to BS4790 Low Radius of Char (Hot Metal Nut Test) Euroclass Flammability Bfl-s1 (BS EN 13501) Suitable for use with castor chairs
Castor Chair Test	10 Years
Warranty	E1 in relation to EN 14041:2004
VOC Content	Breem® 'A+' Rated
Environmental Status	Diversity @roove is a random lay product

TOTAL COLOURWAY OPTIONS - 5

SUITABLE FOR OFFICE, COMMERCIAL, RETAIL, SCHOOLS, COLLEGES, AND LEISURE

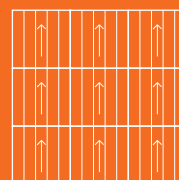
UP TO 65% OF THE TOTAL PRODUCT IS RECYCLED CONTENT

BREEM® 'A+' Rated

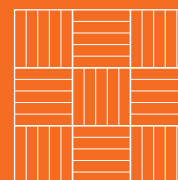


MADE IN BRITAIN

AVAILABLE FROM STOCK



BROADLOOM DESIGN



TESSELLATED DESIGN



RANDOM LAY DESIGN

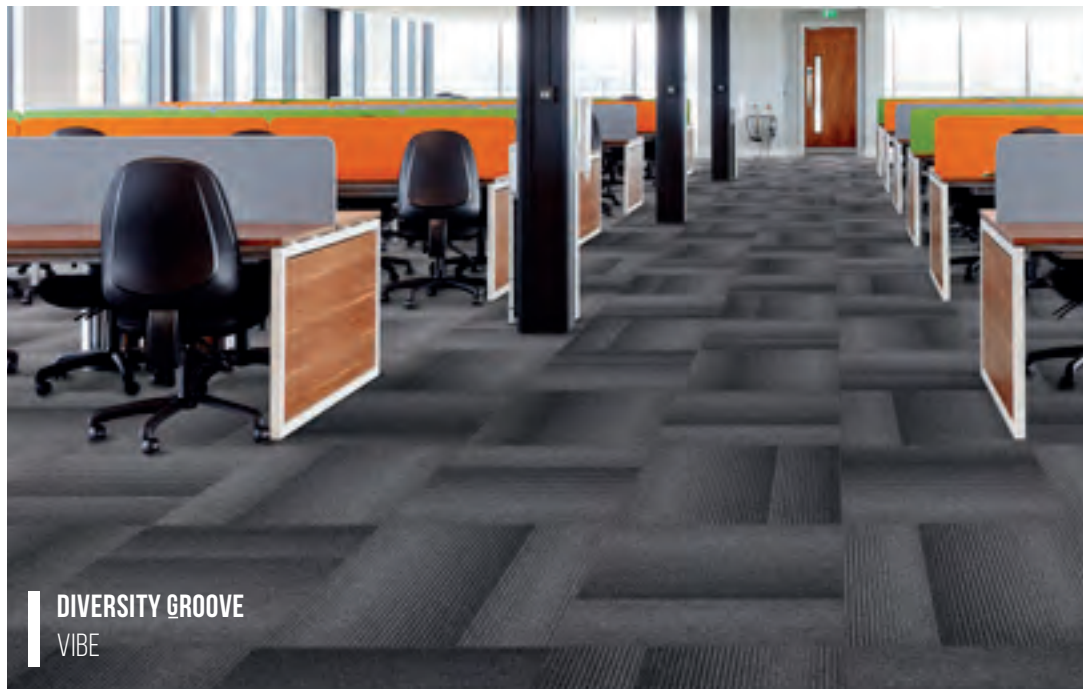
Tile colours representative in print, order a full tile for true likeness.



DIVERSITY GROOVE
ASHA



DIVERSITY GROOVE
ARMADA



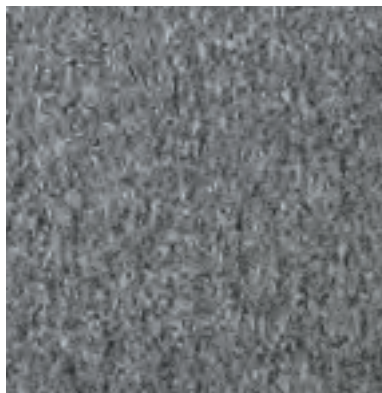
DIVERSITY GROOVE
VIBE



DIVERSITY GROOVE
JAXX

DIVERSITY





Lupus Grey 811
(LRV - Y27.56)



Purple Rain, 750
(LRV - Y4.26)



Razzmic Berry, 740
(LRV - Y6.07)



Panther, 812
(LRV - Y2.94)



Foundry Grey, 810
(LRV - Y6.63)



Mouse, 830
(LRV - Y16.28)



London Stone, 820
(LRV - Y10.04)



Liberty, 612
(LRV - Y3.13)



Electric, 625
(LRV - Y5.12)



Denim, 616
(LRV - Y4.95)



Skylight, 640
(LRV - Y7.65)



Blazer, 210
(LRV - Y4.52)



Racing Green, 505
(LRV - Y4.89)



Grasshopper, 550
(LRV - Y14.41)



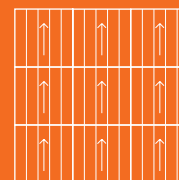
Bark, 108
(LRV - Y9.82)

Style	Tufted 1/10" Loop Pile Tile
Fibre Construction	100% Solution Dyed Nylon
Pile Yarn Weight	500 gsm
Pile Height	3mm
Total Weight	4280 gsm
Total Thickness	5.5mm (Tile)
Backing	100% Envirobase - minimum of 75% recycled material
Additional Backing	100% Komfort Bac available on request
Tile Size	50cm x 50cm
Wear Classification	Heavy Contract Class 33
Luxury Class	LC1
Anti-static	<2Kv body voltage. Suitable for use with computers
Static Load to BS 4939	Not less than 80% recovery after 24 hours
Colour fastness to BS1006	To Light (BS EN ISO105-B02) Better than 6 To Shampoo BS 1006 - UK - TB Change in shade 4 - 5 To Rubbing (BS EN ISO105-X12) Wet 4 - 5, Dry 4 - 5
Flammability	Floorcoverings tested to BS4790 Low Radius of Char (Hot Metal Nut Test) Euroclass Flammability Bfl-s1 (BS EN 13501) Suitable for use with castor chairs
Castor Chair Test	Suitable for use with castor chairs
Warranty	10 Years
VOC Content	E1 in relation to EN 14041:2004
Environmental Status	Breem® 'A+' Rated

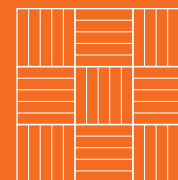
TOTAL COLOURWAY OPTIONS - 15

SUITABLE FOR OFFICE, COMMERCIAL, RETAIL, SCHOOLS, COLLEGES, AND LEISURE

UP TO 65% OF THE TOTAL PRODUCT IS RECYCLED CONTENT



BROADLOOM DESIGN



TESSELLATED DESIGN

AVAILABLE FROM STOCK



MADE IN BRITAIN

BREEM® 'A+' Rated

Tile colours representative in print, order a full tile for true likeness.



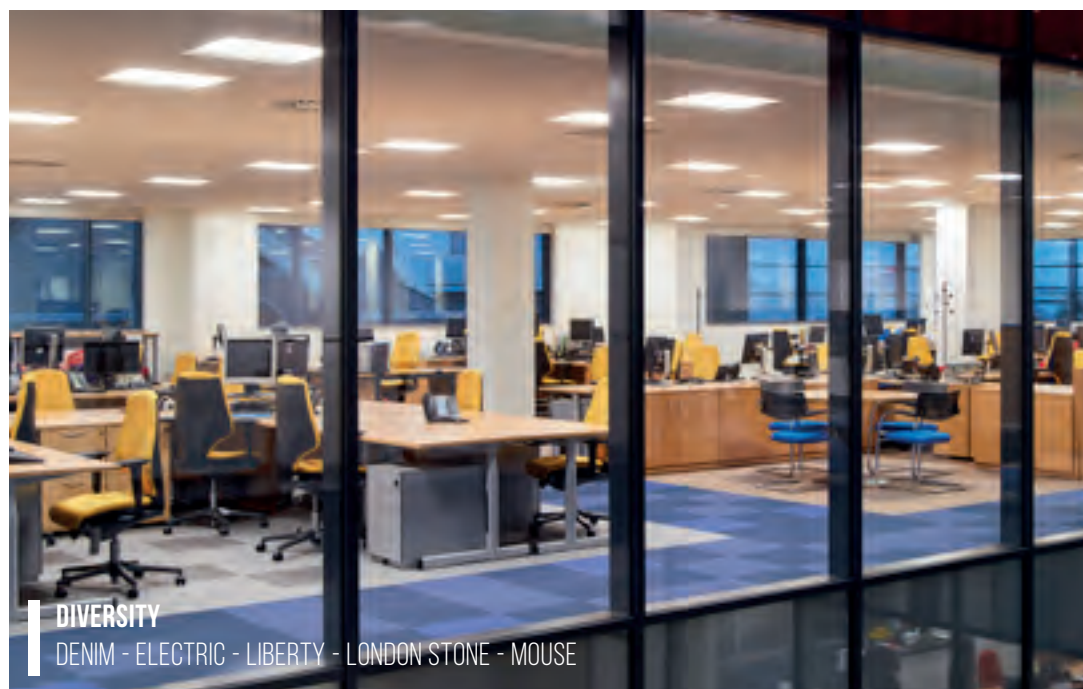
DIVERSITY
RAZZMIC BERRY



DIVERSITY
MOUSE



DIVERSITY
RAZZMIC BERRY



DIVERSITY
DENIM - ELECTRIC - LIBERTY - LONDON STONE - MOUSE

TOCCARRE





Desmo
(LRV - Y4.52)



Tutto
(LRV - Y2.19)



Moderno
(LRV - Y4.98)



Azzurra
(LRV - Y7.75)



Blu
(LRV - Y8.91)



Fresco
(LRV - Y7.85)



Marrone
(LRV - Y8.88)



Montagna
(LRV - Y13.25)



Termi
(LRV - Y8.96)



Grigia
(LRV - Y16.22)



Menta
(LRV - Y6.34)



La Mela
(LRV - Y8.36)

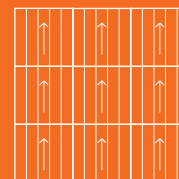
Style	Tufted Loop Pile Tile 1/10" gauge
Yarn Construction	100% Solution Dyed Polypropylene
Pile Yarn Weight	630 gsm
Pile Height	3mm
Total Weight	4420 gsm
Pile Density	214,567 tufts per m2
Total Thickness	6mm
Backing	100% Envirobase - minimum of 75% recycled material
Additional Backing	100% Komfort Bac available on request
Dimensions	50cm x 50cm
Wear Classification	Heavy Contract Class 33
Luxury Class	LC1
Anti-static	Suitable for use with computers
Colour Fastness	To Light BS EN ISO 105-B02 Wet Rubbing (BS EN ISO 105-X12) 4 - 5 Dry Rubbing (BS EN ISO 105-X12) 4 - 5 Shampoo (BS1006:UK-TB) 4 - 5
Flammability	Floorcoverings tested to BS4790
Low Radius of Char	Euroclass Flammability Cfl-s1 (BS EN 13501)
Castor Chair Test	BS EN 985 r value 2.9 Suitable for continuous use
Warranty	10 Years
VOC Content	E1 in relation to EN 14041:2004
Environmental Status	Breem® 'A+' Rated

TOTAL COLOURWAY OPTIONS - 12

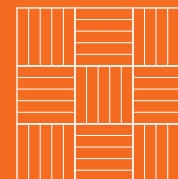
SUITABLE FOR COMMERCIAL, EDUCATION, HEALTH AND RETAIL MARKETS

RECYCLABLE - PRODUCT CAN BE REPURPOSED AT THE END OF ITS LIFECYCLE AS A NON STANDARD OPTION

UP TO 50% RECYCLED CONTENT IN THE BITUMEN BACKING



BROADLOOM DESIGN



TESSELLATED DESIGN

AVAILABLE FROM STOCK



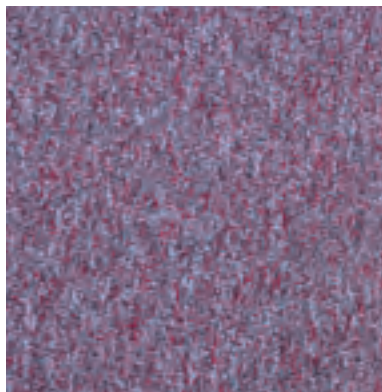
MADE IN BRITAIN

BREEM® 'A+' Rated

Tile colours representative in print, order a full tile for true likeness.

VITAL





Vital 2315
(LRV - Y6.01)



Vital 6013
(LRV - Y6.90)



Vital 6310
(LRV - Y6.30)



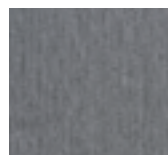
Vital 6011
(LRV - Y5.49)



Vital 8001
(LRV - Y7.11)



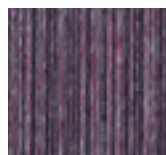
Vital 8007
(LRV - Y2.54)



Vital 8302
(LRV - Y9.86)



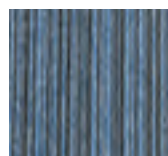
Vital 8316
(LRV - Y5.09)



Vital 872315
(LRV - Y4.00)



Vital 876310
(LRV - Y4.26)



Vital 876013
(LRV - Y4.85)



Vital 878316
(LRV - Y3.91)



Vital 868302
(LRV - Y7.54)



Vital 878302
(LRV - Y6.91)

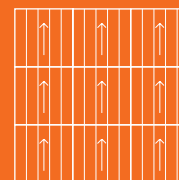
Style	1/10th gauge
Yarn Construction	100% Solution dyed nylon
Pile Yarn Weight	450gsm
Pile Height	3mm
Total Weight	4030 gsm
Total Thickness	5.5mm
Backing	100% Envirobase - minimum of 75% recycled material
Additional Backing	100% Komfort Bac available on request
Dimensions	500mm x 500mm
Wear Classification	Heavy Contract Class 33
Luxury Class	LC1
Anti-static	Suitable for use with computers. Less than 2Kv
Flammability	Bfl-s1 (BS EN 13501-1)
Castor chair	Suitable for intensive use
Warranty	10 years

TOTAL COLOURWAY OPTIONS - 14

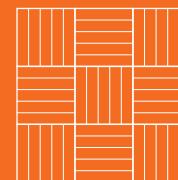
SUITABLE FOR ALL

UP TO 50% RECYCLED CONTENT IN THE BITUMEN BACKING

MAY ONLY BE INSTALLED TESSELLATED



BROADLOOM DESIGN



TESSELLATED DESIGN

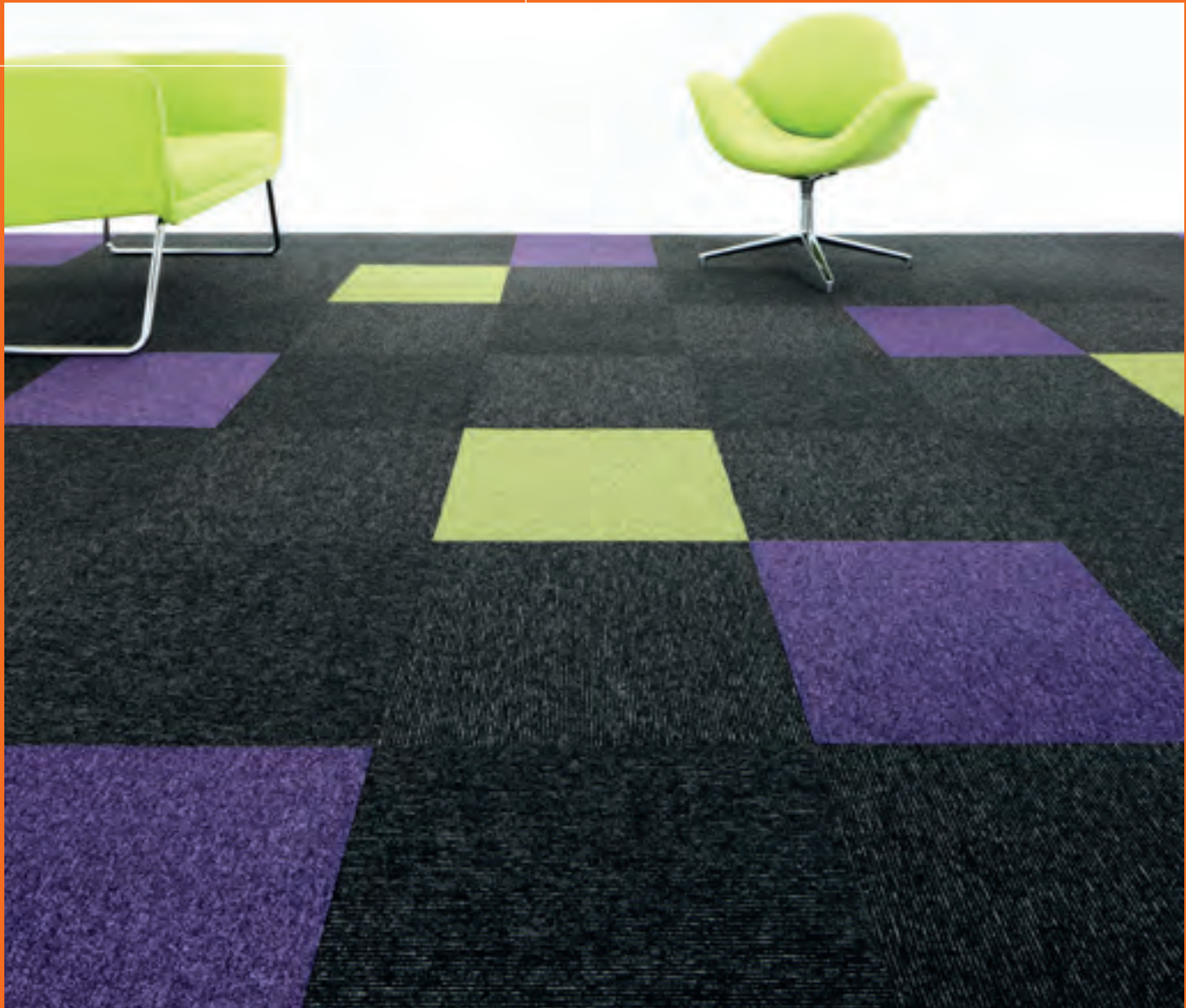
AVAILABLE FROM STOCK



MADE IN BRITAIN

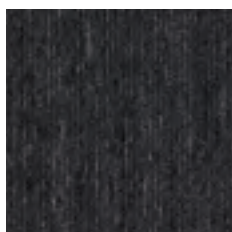
Tile colours representative in print, order a full tile for true likeness.

SIROCCO STRIPE





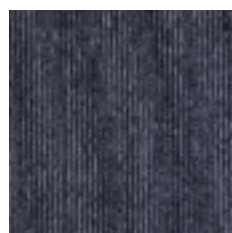
Blue Candy
(LRV - Y7.23)



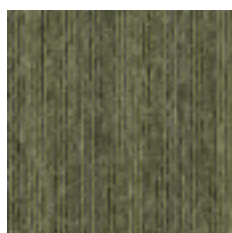
Liquorice
(LRV - Y3.79)



Humbug
(LRV - Y12.76)



Bubblegum
(LRV - Y5.66)



Spearmint
(LRV - Y9.89)

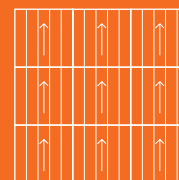
Style	Tufted 1/10" Loop Pile Tile
Fibre Construction	100% Solution Dyed Polypropylene
Pile Yarn Weight	580 gsm
Pile Height	3.5mm
Total Weight	4360 gsm
Total Thickness	6.5mm
Backing	100% Envirobase - minimum of 75% recycled material
Additional Backing	100% Komfort Bac available on request
Tile Size	50cm x 50cm
Wear Classification	Heavy Contract Class 33
Luxury Class	LC4
Anti-static	<2Kv body voltage. Suitable for use with computers
Static Load to BS 4939	Not less than 80% recovery after 24 hours
Colour fastness to BS1006	To Light (BS EN ISO105-B02) Better than 6 To Shampoo BS 1006 - UK - TB Change in shade 4 - 5 To Rubbing (BS EN ISO105-X12) Wet 4 - 5, Dry 4 - 5
Flammability	Floorcoverings tested to BS4790 Low Radius of Char (Hot Metal Nut Test) Euroclass Flammability BS EN 13501 Bfi-s1
Castor Chair Test	Suitable for use with castor chairs
Warranty	10 Years
VOC Content	E1 in relation to EN 14041:2004
Sirocco Stripe to be laid tessellated only	

TOTAL COLOURWAY OPTIONS - 5

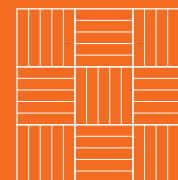
SUITABLE FOR ALL COMMERCIAL AND EDUCATION MARKETS

UP TO 50% RECYCLED CONTENT IN THE BITUMEN BACKING

MAY ONLY BE INSTALLED TESSELLATED



BROADLOOM DESIGN



TESSELLATED DESIGN

AVAILABLE
FROM STOCK



MADE IN BRITAIN

Tile colours representative in print, order a full tile for true likeness.

SIROCCO





Jet
(LRV - Y2.78)



Tanzanite
(LRV - Y4.84)



Tempest
(LRV - Y3.22)



Paprika
(LRV - Y6.71)



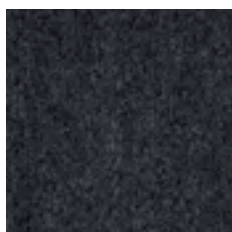
Blue John
(LRV - Y5.78)



Topaz
(LRV - Y8.50)



Sapphire
(LRV - Y4.95)



Quartz
(LRV - Y5.15)



Pewter
(LRV - Y15.55)



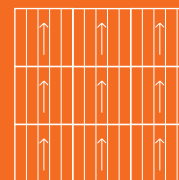
Lime
(LRV - Y15.29)

Style	Tufted 1/10" Loop Pile Tile
Fibre Construction	100% Solution Dyed Polypropylene
Pile Yarn Weight	580 gsm
Pile Height	3.5mm
Total Weight	4360 gsm
Total Thickness	6.5mm
Backing	100% Envirobase - minimum of 75% recycled material
Additional Backing	100% Komfort Bac available on request
Tile Size	50cm x 50cm
Wear Classification	Heavy Contract Class 33
Luxury Class	LC1
Anti-static	<2Kv body voltage. Suitable for use with computers
Static Load to BS 4939	Not less than 80% recovery after 24 hours
Colour fastness to BS1006	To Light (BS EN ISO105-B02) Better than 6 To Shampoo BS 1006 - UK - TB Change in shade 4 - 5 To Rubbing (BS EN ISO105-X12) Wet 4 - 5, Dry 4 - 5
Flammability	Floorcoverings tested to BS4790 Low Radius of Char (Hot Metal Nut Test) Euroclass Flammability BS EN 13501 Bfi-s1 Suitable for use with castor chairs
Castor Chair Test	Suitable for use with castor chairs
Warranty	10 Years
VOC Content	E1 in relation to EN 14041:2004

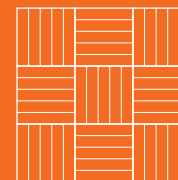
TOTAL COLOURWAY OPTIONS - 10

SUITABLE FOR ALL COMMERCIAL AND EDUCATION MARKETS

UP TO 50% RECYCLED CONTENT IN THE BITUMEN BACKING



BROADLOOM DESIGN



TESSELLATED DESIGN

AVAILABLE
FROM STOCK



MADE IN BRITAIN

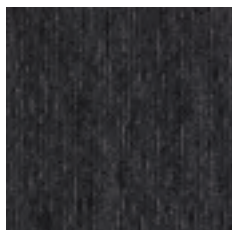
Tile colours representative in print, order a full tile for true likeness.

MACAW STRIPE





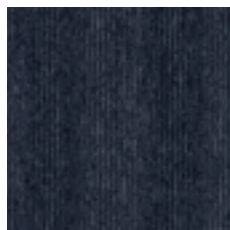
Lime / Quartz Stripe
(LRV - Y9.33)



Jet / Quartz Stripe
(LRV - Y3.82)



Quartz / Pewter Stripe
(LRV - Y12.56)



Sapphire / Aegean Stripe
(LRV - Y6.75)

Style	Tufted Loop Pile Tile 1/10" gauge
Yarn Construction	100% Solution Dyed Polypropylene
Pile Yarn Weight	420 gsm
Pile Height	3.5mm
Total Weight	4200 gsm
Total Thickness	6mm
Backing	100% Envirobase - minimum of 75% recycled material
Dimensions	50cm x 50cm
Wear Classification	General usage
Anti-static	<2Kv body voltage. Suitable for use with computers
Static Load to BS 4939	Not less than 80% recovery after 24 hours
Colour Fastness	To Light (BS EN ISO105-B02) Better than 6 To Shampoo BS 1006 - UK - TB Change in shade 4 - 5 To Rubbing (BS EN ISO105-X12) Wet 4 - 5, Dry 4 - 5
Flammability	Floorcoverings tested to BS4790 Low Radius of Char (Hot Metal Nut Test) Euroclass Flammability (BS EN 13501) Efl
VOC Content	E1 in relation to EN 14041:2004
	Macaw Stripe to be laid tessellated only

TOTAL COLOURWAY OPTIONS - 4

SUITABLE FOR GENERAL OFFICE AND LIGHT COMMERCIAL AREAS

ATTRACTIVE ENCAPSULATED YARN

BLEACH RESISTANT YARN

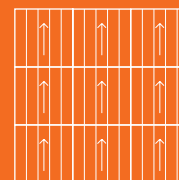
EASY TO CLEAN

PASSES RELEVANT FLAMMABILITY TEST

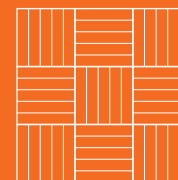
COST-EFFECTIVE FLOORCOVERING SOLUTION

UP TO 65% RECYCLED CONTENT IN THE BITUMEN BACKING

MAY ONLY BE INSTALLED TESSELLATED



BROADLOOM DESIGN



TESSELLATED DESIGN

AVAILABLE
FROM STOCK



MADE IN BRITAIN

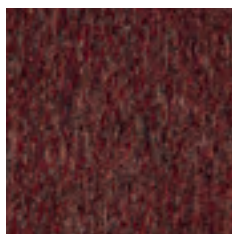
Tile colours representative in print, order a full tile for true likeness.

MACAW

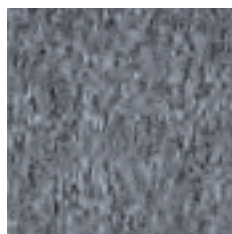




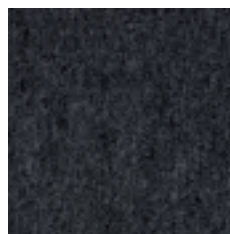
Aegean
(LRV - Y8.17)



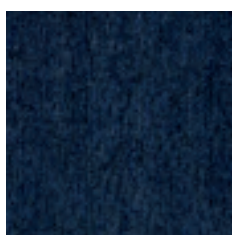
Paprika
(LRV - Y6.24)



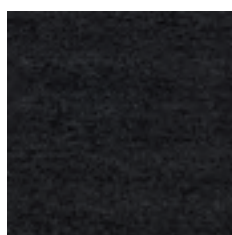
Pewter
(LRV - Y15.29)



Quartz
(LRV - Y5.94)



Sapphire
(LRV - Y5.02)



Jet
LRV - Y18.68)

Style	Tufted Loop Pile Tile 1/10" gauge
Yarn Construction	100% Solution Dyed Polypropylene
Pile Yarn Weight	420 gsm
Pile Height	3.5mm
Total Weight	4200 gsm
Total Thickness	6mm
Backing	100% Envirobase - minimum of 75% recycled material
Dimensions	50cm x 50cm
Wear Classification	General usage
Anti-static	<2Kv body voltage. Suitable for use with computers
Static Load to BS 4939	Not less than 80% recovery after 24 hours
Colour Fastness	To Light (BS EN ISO105-B02) Better than 6 To Shampoo BS 1006 - UK - TB Change in shade 4 - 5 To Rubbing (BS EN ISO105-X12) Wet 4 - 5, Dry 4 - 5
Flammability	Floorcoverings tested to BS4790 Low Radius of Char (Hot Metal Nut Test) Euroclass Flammability (BS EN 13501) Efl
VOC Content	E1 in relation to EN 14041:2004

TOTAL COLOURWAY OPTIONS - 6

SUITABLE FOR GENERAL OFFICE AND LIGHT COMMERCIAL AREAS

ATTRACTIVE ENCAPSULATED YARN

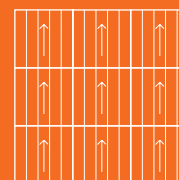
BLEACH RESISTANT YARN

EASY TO CLEAN

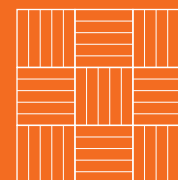
PASSES RELEVANT FLAMMABILITY TEST

COST-EFFECTIVE FLOORCOVERING SOLUTION

UP TO 65% RECYCLED CONTENT IN THE BITUMEN BACKING



BROADLOOM DESIGN



TESSELLATED DESIGN

AVAILABLE
FROM STOCK



MADE IN BRITAIN

Tile colours representative in print, order a full tile for true likeness.



CUT PILE

Maestro
Solaris
Workspace Cutpile

MAESTRO

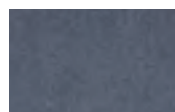


MAESTRO

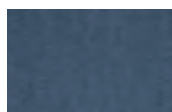
CHANTENEY ORANGE - AUBERGINE - BRACKEN SALTS - STEEL



Aubergine
(LRV - Y3)



Blue Diamond
(LRV - Y12.87)



Teal
(LRV - Y9.23)



Turquoise
(LRV - Y7.76)



Celestial Blue
(LRV - Y10.34)



Sapphire
(LRV - Y6.43)



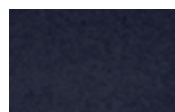
Emerald Orchestra
(LRV - Y9.26)



Azure Fusion
(LRV - Y6.81)



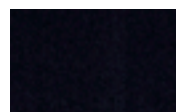
Royal Regatta
(LRV - Y3.36)



Brooklyn Nights
(LRV - Y5.06)



Deep Blue
(LRV - Y2.72)



Twilight Cinders
(LRV - Y2.18)



Dark Green
(LRV - Y3.95)



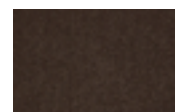
Dublin Bay
(LRV - Y9.18)



Woodland Fern
(LRV - Y16.47)



Indian Ivy
(LRV - Y18.47)



Cocoa Blush
(LRV - Y5.94)



Sycamore
(LRV - Y6.22)



Sunflower Symphony
(LRV - Y12.76)



Beige
(LRV - Y17.94)



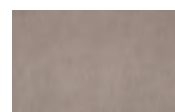
Velvet Truffle
(LRV - Y10.99)



Night Jewel
(LRV - Y12.55)



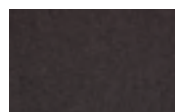
Silver
(LRV - Y12.15)



Bracken Salts
(LRV - Y19.35)



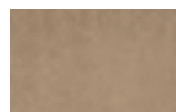
Charcoal
(LRV - Y3.05)



Steel
(LRV - Y5.88)



Gold
(LRV - Y22.17)



Earth Glaze
(LRV - Y18.24)



Nutshell
(LRV - Y22.44)



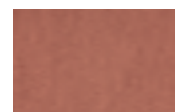
Chanteny Orange
(LRV - Y15)



Auburn Falls
(LRV - Y16.83)



Hot Paprika
(LRV - Y8.79)



Coral
(LRV - Y15.53)



Delhi Bazaar
(LRV - Y6.85)



Dusty Pink
(LRV - Y5.97)



Volcanic Splash
(LRV - Y7.96)



Red
(LRV - Y5.50)



Claret
(LRV - Y4.16)

MAESTRO

140



MAESTRO

CELESTIAL BLUE - COCOA BLUSH - SILVER - DUSTY PINK - VOLCANIC SPLASH - VELVET TRUFFLE



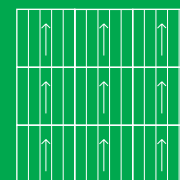
Style	1/10th gauge tufted cutpile
Yarn Construction	100% Invista Nylon
Pile Yarn Weight	1050 gsm
Pile Height	5mm
Total Weight	4,650gsm
Total Thickness	8mm
Backing	100% Envirobase - minimum of 75% recycled material
Additional Backing	100% Komfort Bac available on request
Dimensions	50cm x 50cm
Wear Classification	Heavy Contract Class 33
Luxury Class	LC3
Anti-static	< 2kV body voltage. Suitable for use with computers
Colour Fastness	To Light (ISO105 – B02) > 5 To Water (ISO 105 - E01) > 4 To Rubbing (ISO 105 - X12) > 4
Flammability	Floorcoverings tested to BS4790 (Hot Metal Nut Test) Low Radius of Char
Castor Chair Test	BS EN 985 r value 2.8 continuous use
Warranty	10 Year Warranty
Voc Content	E1 in relation to EN 14041:2004

TOTAL COLOURWAY OPTIONS - 38

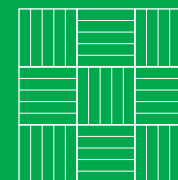
SUITABLE FOR OFFICE, COMMERCIAL, RETAIL, SCHOOLS, COLLEGES, AND LEISURE

ONLY AVAILABLE IN 50 X 50CM TILE

antron. 



BROADLOOM DESIGN



TESSELLATED DESIGN

AVAILABLE FROM STOCK



MADE IN BRITAIN

Tile colours representative in print, order a full tile for true likeness.

SOLARIS





Charon
(LRV - Y12.52)



Nix
(LRV - Y6.32)



Juno
(LRV - Y2.62)



Oberon
(LRV - Y10.72)



Titan
(LRV - Y19.34)



Eris
(LRV - Y3.83)



Saturn
(LRV - Y2.58)



Telesto
(LRV - Y7.96)



Mercury
(LRV - Y9.01)



Pandora
(LRV - Y7.47)



Phobos
(LRV - Y3.59)



Callisto
(LRV - Y4.66)



Janus
(LRV - Y3.98)



Calypso
(LRV - Y16.47)



Himalia
(LRV - Y5.43)

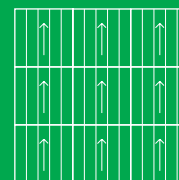
Style	Tufted Cut Pile Tile 1/10" gauge
Yarn Construction	100% Invista Nylon
Pile Yarn Weight	1100 gsm
Pile Height	5.5mm
Total Weight	4950 gsm
Total Thickness	8mm
Backing	100% Envirobase - minimum of 75% recycled material
Additional Backing	100% Komfort Bac available on request
Dimensions	50cm x 50cm
Wear Classification	Heavy Contract Class 33
Luxury Class	LC3
Anti-static	Less than 2Kv Suitable for use with computers Colour Fastness Light BS EN ISO105-BO2: 5 To Water BS EN ISO105-E01: 4 Rubbing BS EN ISO105-X12: 4 Dry, 3 Wet
Flammability	BS4790 Low Radius of Char BS EN 13501-1 Bfl-s1
Castor Chair Test	Test BS EN 985: >2.8 Suitable for continuous use
Warranty	10 Year Warranty
VOC Content	E1 in relation to EN 14041:2004

TOTAL COLOURWAY OPTIONS - 15

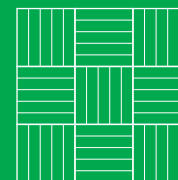
SUITABLE FOR OFFICE, COMMERCIAL, RETAIL, SCHOOLS, COLLEGES, AND LEISURE

UP TO 50% OF THE TOTAL PRODUCT IS RECYCLED CONTENT

antron 



BROADLOOM DESIGN



TESSELLATED DESIGN

AVAILABLE FROM STOCK



MADE IN BRITAIN

Tile colours representative in print, order a full tile for true likeness.

WORKSPACE CUTPILE





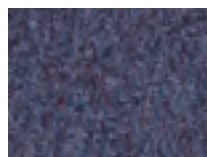
Sky Blue
(LRV - Y7.34)



Salsa
(LRV - Y3.28)



Lilac
(LRV - Y6.59)



Grape Blue
(LRV - Y6.91)



Biscay Blue
(LRV - Y3.35)



Coastal Blue
(LRV - Y3.59)



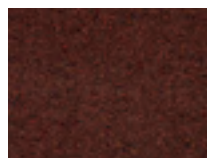
Wheat
(LRV - Y16.70)



Gecko Green
(LRV - Y9.72)



Nordic Green
(LRV - Y8.15)



Cayenne
(LRV - Y6.11)



Iron Grey
(LRV - Y5.26)



Steel Grey
(LRV - Y11.62)

Style	Tufted Cut Pile 1/10" gauge
Yarn Construction	100% solution dyed nylon
Pile Yarn Weight	850 gsm
Pile Height	5mm
Total Weight	4650 gsm
Pile Density	143,700 tufts per m2
Total Thickness	8.5mm
Backing	Bitumen
Dimensions	50cm x 50cm
Wear Classification	Heavy Contract
Luxury Class	LC2
Anti-static	Suitable for use with computers. Less than 2Kv
Colour Fastness	To Light (BS EN ISO105-B02) 6 To Water (BS EN ISO105-E01) 4 - 5 To Rubbing (BS EN ISO105-X12) 4 - 5 To Shampoo BS 1006 - UK - TB 4 - 5
Flammability	Floorcoverings tested to BS4790 Low Radius of Char (Hot Metal Nut Test) Euroclass Flammability (BS EN ISO 9239) Bfl-s1 (BS EN ISO 11925-2)
Castor Chair Test	BS EN 985 2.4 Suitable for use with castor chairs
Warranty	10 Years
VOC Content	E1 in relation to EN 14041:2004

TOTAL COLOURWAY OPTIONS - 12

SUITABLE FOR COMMERCIAL, EDUCATION
AND RETAIL MARKETS

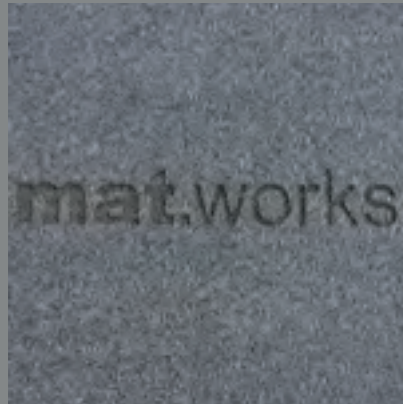
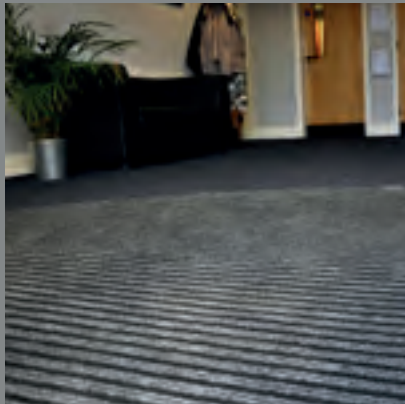
RECYCLABLE - PRODUCT CAN BE REPURPOSED
AT THE END OF ITS LIFECYCLE AS A NON STANDARD OPTION

UP TO 50% OF THE TOTAL PRODUCT IS RECYCLED CONTENT

AVAILABLE
FROM STOCK



Tile colours representative in print, order a full tile for true likeness.



ENTRANCE MATTING

ALUMINIUM

- > 12mm to 22mm

PRIMARY

- > Entrack50
- > Tyre Tile

SECONDARY

- > Premier
- > Workspace Entrance
- > Workspace Entrance Design

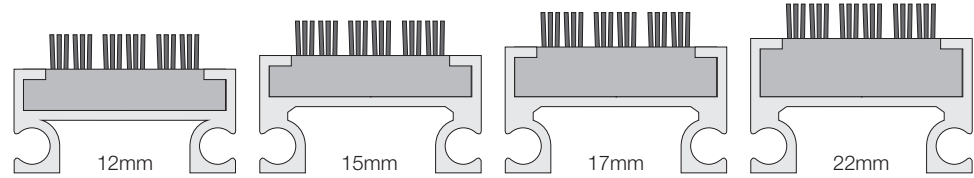
FRAMEWORKS

Frameworks is a unique range of tough and durable aluminium extruded entrance systems with a range of insert options.

How to choose your frameworks system:

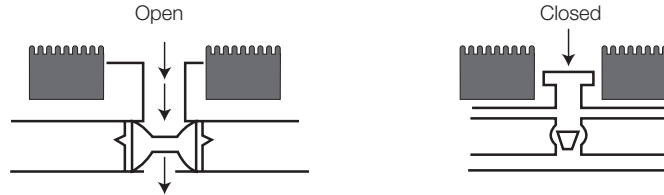
Stage 1:

Select your height



Stage 2:

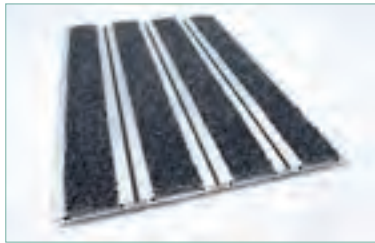
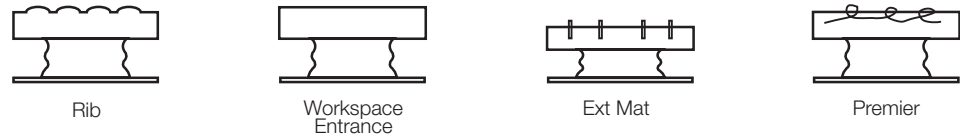
Pick your construction



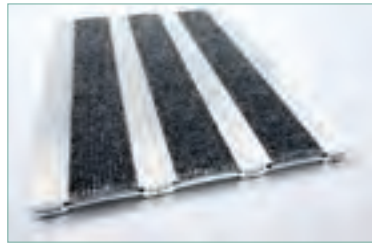
Open - collect dirt and moisture inside the mat/matwell rather than on the surface. Rollable for cleaning.
Closed - Dirt and moisture collected on the surface of the mat.

Stage 3:

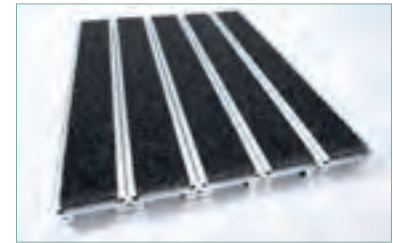
Pick your insert from 13 options



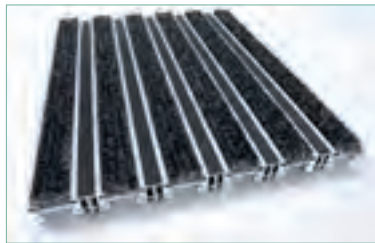
Frameworks 12



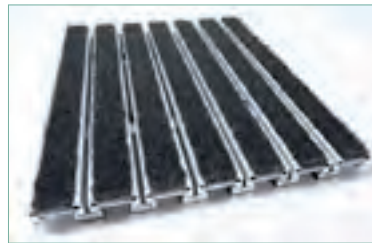
Frameworks 15C



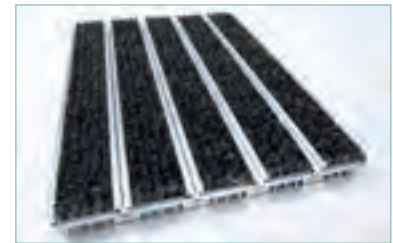
Frameworks 17C



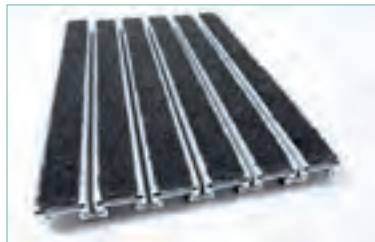
Frameworks 17CS



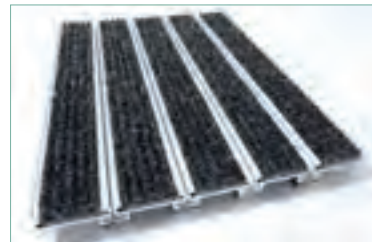
Frameworks 17DR



Frameworks 17HD



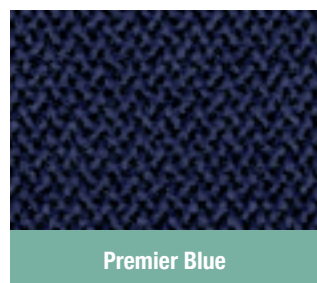
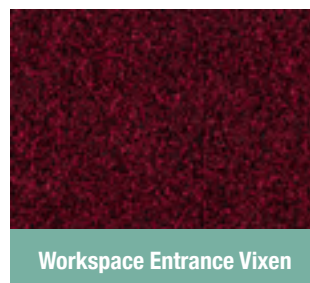
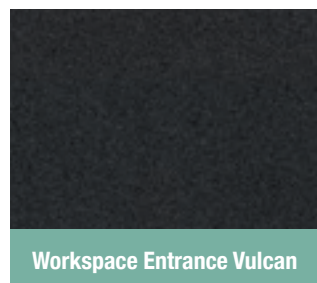
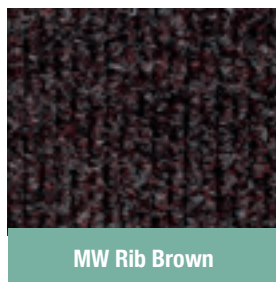
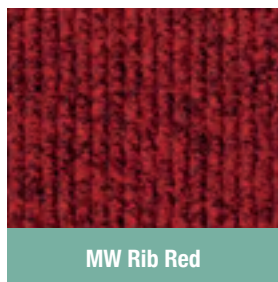
Frameworks 17OP & 22OP



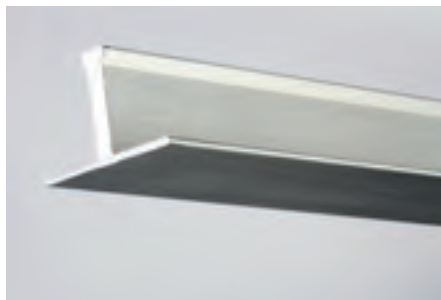
Frameworks 22C

C = Closed
CS = Closed Scraper
DR = Drainable
HD = Heavy Duty
OP = Open

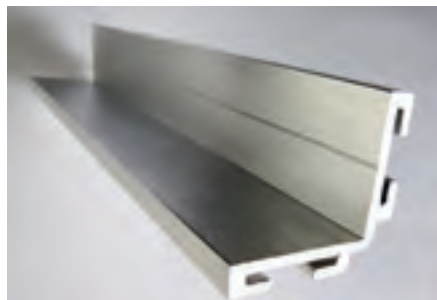
Available Colourways :



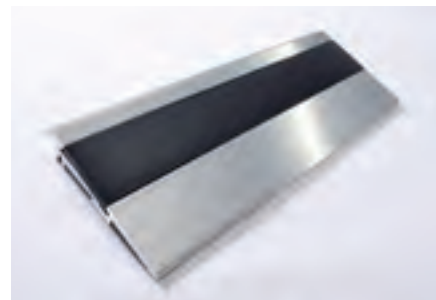
Accessories :



T-bar



10mm-25mm Framing

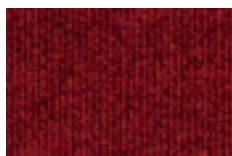


MW Ramp System

PRIMARY : ENTRACK50

Recyclable and reusable, versatile
TPE modular matting solution





MW Rib Red



MW Rib Anthracite



MW Rib Charcoal



EXT Mat



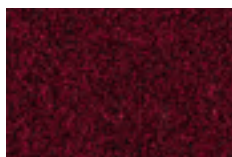
Workspace Entrance Vulcan



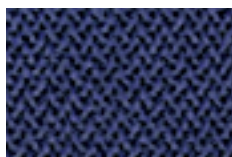
Workspace Entrance Victor



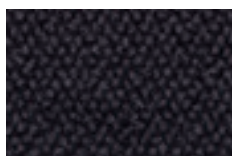
Workspace Entrance Viscount



Workspace Entrance Vixen



Premier Blue



Premier Charcoal



Premier Mercury

Size
500mm x 500mm x 10mm

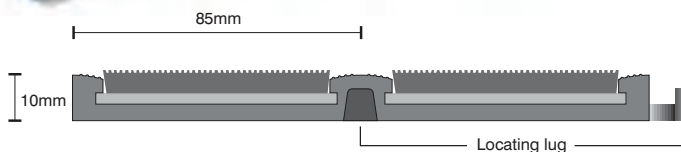
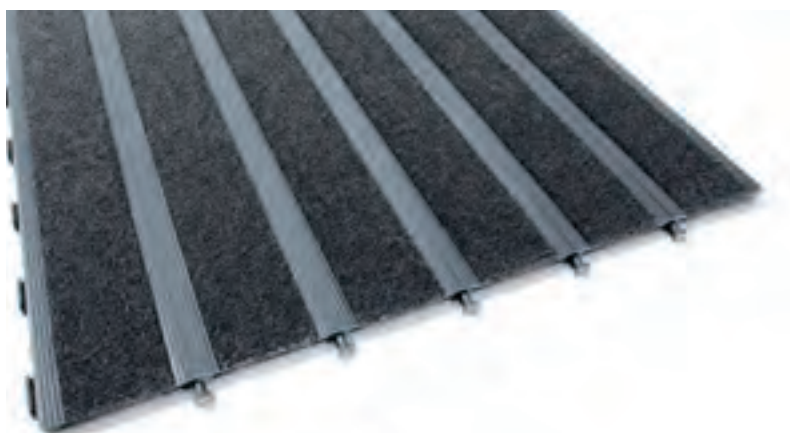
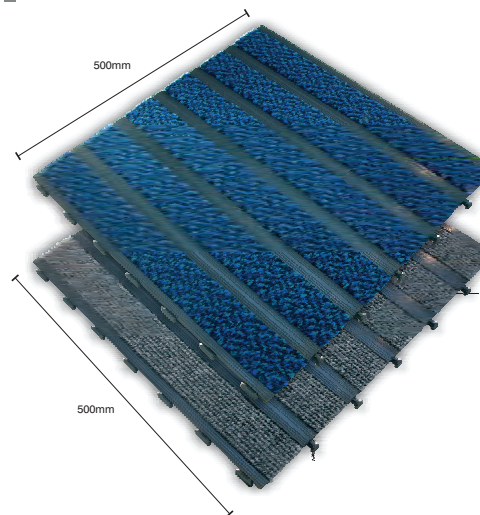
Insert width
85mm

Connection
integral 'lock down' fixing system

Colourway options
11

Environmental options
Recyclable and reusable

Base
Non-pvc polymer base



A FLEXIBLE MODULAR SYSTEM MADE FROM TPE WHICH WON'T EXPAND, CONTRACT OR FADE IN COLOUR. AN EXTREMELY VERSATILE PRODUCT, ENTRACK50 CARPET STRIPS ARE INTERCHANGEABLE AND IS SUITABLE FOR ENTRANCES WITH OR WITHOUT MATWELLS.

HIGH SPECIFICATION LOW PROFILE PLATFORM

EASY TO CUT AND SHAPE TO BESPOKE PATTERNS

RECYCLABLE AND REUSABLE

WON'T TAP, BOUNCE OR BUCKLE UNDER HEAVY FOOTFALL

EASILY CUT AND TRIMMED ON SITE

MADE IN BRITAIN

SUITABLE FOR EXTERNAL OR INTERNAL AREAS

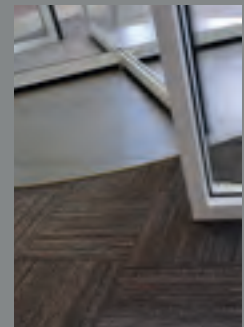
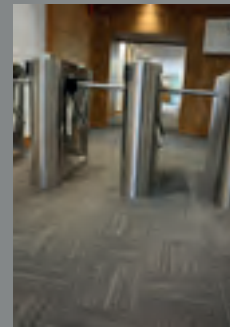
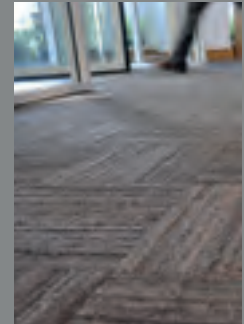
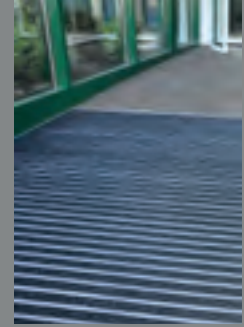
AVAILABLE
FROM STOCK



MADE IN BRITAIN

Tile colours representative in print, order a full tile for true likeness.

PRIMARY : TYRE TILE





Tyre Tile
(LRV - Y4.22)
304mm x 304mm



Total Weight
4650 gsm

Weight
8410 gsm

Composition
Rubber Tyre with Nylon Tread



Backing
Polyethylene Webbing

Dimensions
304mm x 304mm



Wear Classification
Heavy Contract



Colour Fastness

To Light	6
Wet Rubbing	4 - 5
Dry Rubbing	5
Wet Shampoo	4 - 5



Warranty
10 Years

100% RECYCLABLE

MADE FROM 100% RECYCLED TYRES

ONE OF THE LOWEST CARBON FOOTPRINT FLOORING PRODUCTS

WE ARE ISO14001 ENVIRONMENTAL SYSTEMS ACCREDITED

MANVERS PRODUCTION FACILITY IS THE CLEANEST IN EUROPE

EXTRA HEAVY DUTY MATTING SYSTEMS

DESIGNED FOR ENTRANCE AREAS WITH HEAVY TRAFFIC

SUITABLE FOR TROLLEY AND WHEELCHAIR TRAFFIC

SCRAPES AND WIPES DIRT AND MOISTURE FROM SHOES SAVING USAGE OF CHEMICALS IN CLEANING INNER FLOOR PRODUCTS

DDA CONFORMITY

ALL PRODUCTS CONFORM TO BS8300

LOW LRV VALUES COMPARED TO ALUMINIUM, LVL AND FIBREBONDED PRODUCTS ENSURING A POSITIVE POINT DIFFERENCE IS EASY TO ACHIEVE FOR AREAS WHERE PARTIALLY SIGHTED TRAFFIC WILL BE IMPORTANT TO CONSIDER.

EQUALITIES ACT 2010 COMPLIANT

ENTRANCE MATTING RESISTANT TO POINT LOADING AND SCUFFING FROM RUBBER WHEELS AND WALKING AIDS

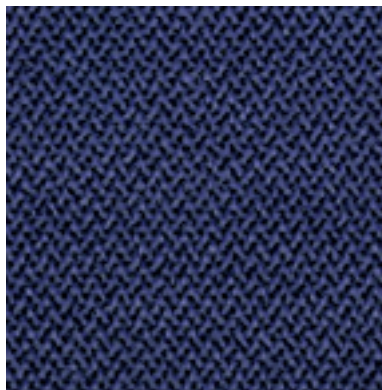
AVAILABLE
FROM STOCK



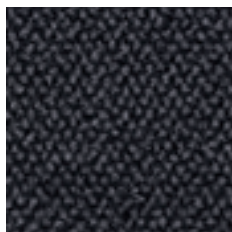
Tile colours representative in print, order a full tile for true likeness.

SECONDARY : PREMIER





Blue
(LRV - Y3.58)



Charcoal
(LRV - Y2.89)



Mercury
LRV - Y3.29)

S **Style**
Tufted Twist Pile

F **Fibre Construction**
80% Wool / 20% Nylon + monofilament scraper


Tuft Gauge
1/8"

 **Pile Yarn Weight**
1500 gsm


 **Pile Height**
6mm

 **Total Weight**
Tile 5300 gsm / Sheet 2300 gsm

 **Pile Density**
117,800 tufts per m2


 **Total Thickness**
Tile 12mm / Sheet 10mm


 **Backing**
Colback
Secondary Backing Unitary Bac. Tile Backing Bitumen

 **Roll Size** 25.00m x 2.00m
Tile Size 50cm x 50cm (Tile)

 **Wear Classification**
Heavy Contract

 **Electro-static**
Less than 2Kv

 **Colour Fastness**
Colour Fastness (BS1006)
Light (BS1006:B02) 5
Wet Rubbing (BS1006:B01) 4 - 5
Dry Rubbing (BS1006:X12) 4 - 5
Wet Shampoo (BS1006:UK-TB) 4 - 5

 **Flammability**
Bfl-s1 (Tile only) (BS EN ISO 11925.2)
(BS EN ISO 9239.1)

10 **Warranty**
10 Years

TOTAL COLOURWAY OPTIONS - 3

MADE FROM 80% WOOL FROM RENEWABLE SOURCES ONLY

ABSORBS UP TO 4 TIMES MORE MOISTURE THAN MAN MADE PRODUCTS

ALL PRODUCTS CONFORM TO BS8300

LOW LRV VALUES COMPARED TO ALUMINIUM, LVL AND FIBREBONDED PRODUCTS ENSURING A POSITIVE POINT DIFFERENCE IS EASY TO ACHIEVE FOR AREAS WHERE PARTIALLY SIGHTED TRAFFIC WILL BE IMPORTANT TO CONSIDER.

EQUALITIES ACT 2010 COMPLIANT

ENTRANCE MATTING RESISTANT TO POINT LOADING AND SCUFFING FROM RUBBER WHEELS AND WALKING AIDS

AVAILABLE
FROM STOCK


MADE IN BRITAIN

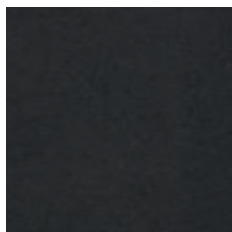
Tile colours representative in print, order a full tile for true likeness.

SECONDARY : WORKSPACE ENTRANCE

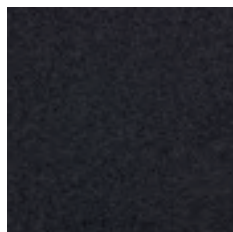




Vixen
(LRV - Y3.24)















Vulcan
(LRV - Y3.48)



Victor
(LRV - 4.87)



Viscount
(LRV - Y2.69)

-  **Style**
Tufted Cut Pile with integral scraper system
-  **Fibre Construction**
100% solution dyed nylon
- Tuft Gauge**
1/10"
-  **Pile Yarn Weight**
1,000 gsm
-  **Pile Height**
5mm +/- 0.5mm
-  **Total Weight**
Tile 4,800 gsm / Sheet 1,800 gsm
-  **Pile Density**
114,260 tufts per square metre
-  **Sheet Thickness**
Tile 9mm / Sheet 8mm
-  **Backing**
Bitumen Compound / Eco-Bac / Unitary Bac
-  **Dimensions**
50cm x 50cm tile / 2m x 20m nominal
-  **Wear Classification**
Heavy Contract Class 33
-  **Colour Fastness**
To Water - 5
To Light - 5
To Rubbing - 4.5
-  **Flammability**
Cfl-s1
-  **10**
10 Years

TOTAL COLOURWAY OPTIONS - 4

ALL PRODUCTS CONFORM TO BS8300

LOW LRV VALUES COMPARED TO ALUMINIUM, LVL AND FIBREBONDED PRODUCTS ENSURING A POSITIVE POINT DIFFERENCE IS EASY TO ACHIEVE FOR AREAS WHERE PARTIALLY SIGHTED TRAFFIC WILL BE IMPORTANT TO CONSIDER.

EQUALITIES ACT 2010 COMPLIANT

ENTRANCE MATTING RESISTANT TO POINT LOADING AND SCUFFING FROM RUBBER WHEELS AND WALKING AIDS

AVAILABLE
FROM STOCK



MADE IN BRITAIN

Tile colours representative in print, order a full tile for true likeness.

SECONDARY : WORKSPACE ENTRANCE DESIGN





Design 2 / Viscount

DESIGN 1



Victor



Viscount



Vixen



Vulcan

DESIGN 2



Victor



Viscount



Vixen

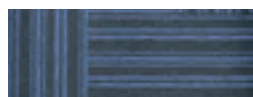


Vulcan

DESIGN 3



Victor



Viscount



Vixen



Vulcan

3 DESIGNS - 4 COLOURWAYS

Style	Tufted Cut Pile with integral scraper system
Fibre Construction	100% solution dyed nylon
Tuft Gauge	1/10"
Pile Yarn Weight	1,000 gsm
Pile Height	5mm +/- 0.5mm
Pile Density	114,260 tufts per square metre
Total Weight	Tile 4,800 gsm / Sheet 1,800 gsm
Sheet Thickness	Tile 9mm / Sheet 8mm
Backing	Bitumen Compound / Eco-Bac / Unitary Bac
Dimensions	50cm x 50cm tile / 2m x 20m nominal
Wear Classification	Heavy Contract Class 33
Colour Fastness	To Water - 5 To Light - 5 To Rubbing - 4.5
Flammability	Cfl-s1
Warranty	10 Years

DESCRIPTION

- Tough heavy contract, secondary entrance matting
- All products conform to BS8300
- Low LRV Values compared to aluminium, LVL and fibrebonded products ensuring a positive point difference is easy to achieve for areas where partially sighted traffic will be important to consider.
- Equalities Act 2010 compliant
- Entrance matting resistant to point loading and scuffing from rubber wheels and walking aids

FLAME PROPERTIES

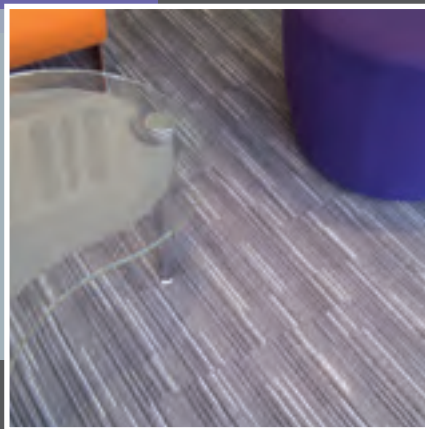
Cfl-s1 for tiles

COLOURS

3 Designs - 4 Colourways

12 options

Tile colours representative in print, order a full tile for true likeness.



OUR PROJECTS

Chanel

Skanska

Ferrero Rocher

Timex

Siba

Servier Italia

AON –London

MOD-Whitehall

W H Smiths

Hereford Academy

Colchester Garrison

Olympic Site-OBC Building, arena areas, athletes village plus other areas.

West Kent College

Essex University

DAS Insurance

Sussex Police

Amazon Offices Cork Ireland

Google Ireland

Rotherham Council Offices

Barclays Canary Wharf

Norman Fosters Architects offices-London

Aberdeen College

Strathclyde Police

Newcastle University

Dundee Council

Opera

EPR

Celtic Football Club

RIBA Royal Institute of British Architects

Wolverhampton University

Cambridge Central Library

Pizza Hut HQ



Cleaning & Maintenance Guide

To maximise the carpet's aesthetic appeal, performance and life expectancy, it is imperative to ensure at the specification stage that:

- 1, Carpets will be protected from other site activities during installation and thereafter.
- 2, Clients understand the enclosed information and that they accept responsibility for correct carpet care.
- 3, Carpets are protected from excess soiling or moisture in entrance areas, by use of an effective barrier material such as those from the mat.works range

General Cleaning

Daily vacuuming with a twin motored upright vacuum cleaner, preferably with an adjustable head, is recommended. It is essential to remove all loose soil daily because if left to build up, the particles of dirt are much harder to remove and are more damaging to the fibre structure, thereby decreasing the life of the carpet.

Attention should be given to areas where there is extra traffic and in entrances to buildings where extra vacuuming is necessary.

Depending on the level of installation trafficking, the carpet should be periodically deep cleaned using high performance hot water extraction equipment.

Rotary brush cleaning not recommended.

A reputable contract cleaner should be used, preferably NCCA registered (for NCCA details visit www.ncca.co.uk). It is important that the carpet is deep cleaned at least once a year.

Stain Removal

It is essential to deal with spillages immediately and any subsequent stains as appropriate.

In the event of a spillage, immediately blot with a clean absorbent cloth until there is no further transfer from the carpet to the cloth. If any further stain remains or has otherwise been allowed to dry, the method will vary accordingly.

It is recognised that particularly for contract situations, if stains are not dealt with immediately, cleaning staff may not be in a position to identify the type of stain. A good quality, multipurpose stain remover is therefore very useful, although it must be understood that this will not successfully tackle all types of stains, and wherever possible the chart recommendations should be strictly followed. Also any stains left over a period of time become increasingly more difficult to remove and may require several treatments.

In all cases after stain removal the carpet should be allowed to dry completely and then cleaned with a twin motored upright vacuum cleaner.

Solvent cleaning of bitumen backed tiles should preferably be avoided. Where this is not possible, extra caution should be taken and only very light surface cleaning should take place.

If any of the treatments listed are not successful, seek professional help. Further advice can be found at www.prochem.co.uk/stain_removal_guide.htm

The methods are recommended in good faith; however, we cannot accept responsibility for their use in any specific case

CLEANING GUIDE

Stain Type	Stain Removal Procedure
Tea / Coffee Food Fountain Pen Ink Water Based Paint	A liquid detergent solution such as Granwax Ezee Spot & Stain Remover. Apply the solution to the stained area. Lightly agitate affected areas & remove by use of absorbent cloth. Stubborn stains may require a second application
Chewing Gum	Apply Chewing Gum Remover then break-up and remove pieces or pierce gum with fork or Prochem Perforator Block then apply Citrus Gel or Solvall Spotter and leave for a few minutes. Remove softened gum with spatula or blunt knife. For large areas apply Bazooka Gum Remover in conjunction with Bazooka Gum Removal Machine.
Grease	Scrape up excess, hardened residue prior to wetting. Apply Solvex or Solvall Spotter and blot. Apply Citrus Gel and blot. Apply Stain Pro and blot. For larger areas apply Power Burst then rinse extract thoroughly
Ink (solvent soluble)	Apply Solvex and blot – no not rub. Repeat as needed. If stain persists, apply Citrus Gel. Rinse thoroughly with water and blot until dry. Note: All inks are not the same and different approaches may have to be evaluated.
Milk	Apply Stain Pro and blot. Apply Fibre & Fabric Rinse solution and blot until dry. If stain persists apply Solvex or Citrus Gel and blot. Apply Neutral Pro-Spotter and blot. Rinse thoroughly with water and blot until dry.
Oils	Apply Solvall Spotter and blot or apply Citrus Gel and blot or apply Solvex and blot until dry. Where a solvent cannot be used apply Power Burst solution, brush and rinse with Fibre & Fabric Rinse solution.
Oil Based Paint / Varnish	Apply Solvall Spotter and blot or apply Citrus Gel and blot or apply Solvex and blot. Re-apply Solvex until as much paint as possible is removed then weight down the stain with towels for several hours to loosen. Apply Neutral Pro-Spotter, work into stain then blot. Rinse thoroughly with water and blot until dry.
Shoe Polish	Apply Solvex or Sovall Spotter & blot. Apply Citrus Gel & blot. Rinse thoroughly with water & blot until dry
Tar & Asphalt	Scrape off as much as possible with blunt knife. Apply Solvall Spotter or Solvex and blot. Apply Citrus Gel and blot. Apply Neutral Pro-Spotter and blot then rinse thoroughly with water and blot until dry.

Health and Safety

Please ensure that for all above referenced items, the Manufacturers' use & safety instructions are adhered to.

Granwax Ezee Spot & Stain Remover can be obtained from Granwax Products Ltd; Telephone 01773 541177

Other products listed can be obtained from Prochem Europe Ltd; Telephone 020 8974 1515



EXPERIENCE CARPET TILES
PARAGON COLLECTION 2018

Farfield Park, Manvers, Wath-upon-Deerne, Rotherham, S63 5DB

T. +44 (0) 1709 763 839 F. +44 (0) 1709 763 813 E. sales@paragon-carpets.co.uk

www.paragon-carpets.co.uk

Marketing/Samples Department E. marketing@paragon-carpets.co.uk T. +44 (0)1709 763 805

SHOWROOM: London Design Studio
111 Charterhouse St / London / EC1M 6AW