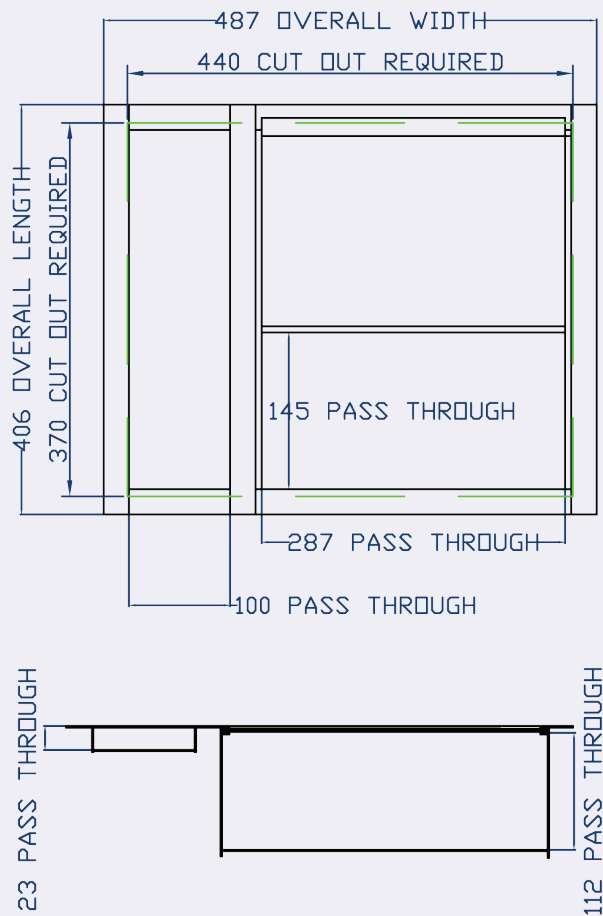
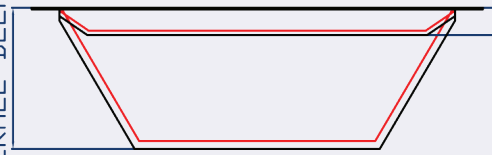


TECHNICAL SPECIFICATION:

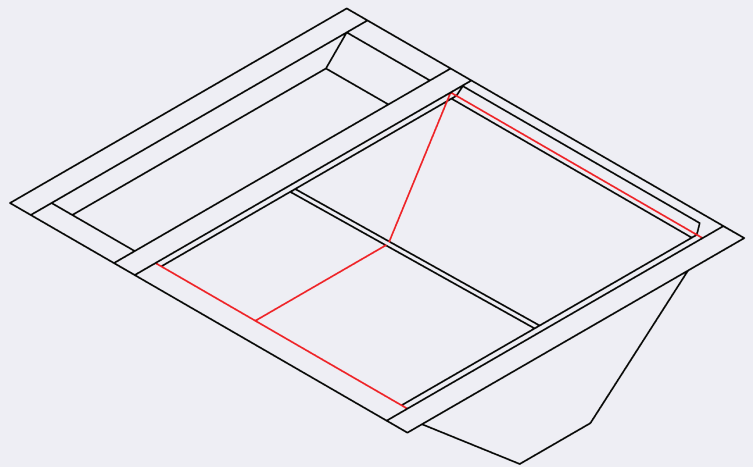
TYPE DT3 - 110mm COMBINATION DOCUMENT PASSING TRAY



127 OVERALL DEEP DEPTH



26 OVERALL SHALLOW DEPTH



DESCRIPTION:

STANDARD TYPE DT3 DOCUMENT PASSING TRAY

FINISH:

SCOOP - BRUSHED STAINLESS STEEL

ANGLE SIDES - BLACK POWDER COATED

OVERALL SIZE - 350 x 405 x 128mm

CUT OUT REQUIRED - 320 x 370 x 130mm

OPTIONS:

BULLET RESISTANT SHOT BOX

NON STANDARD SIZES

NOT SUITABLE FOR EXTERNAL APPLICATIONS

