

## Safyr® Metadata Discovery Software for Enterprise Application Packages

### DISCOVER

Rapid, automated extraction of all metadata from your Enterprise Applications including SAP, Oracle, Salesforce and others as implemented.

### SCOPE

Use Safyr to search for and easily isolate the tables, relationships, fields and components in your Enterprise systems in the context of your data projects.

### DELIVER

Faster and more accurate project delivery by improving Source Data analysis productivity by up to 90%  
Export results to modelling, integration, metadata management and other tools.



Safyr provides data & enterprise analysts, architects and modelers with unique insight into the data foundations of their large, complex and customised Enterprise Applications.

Accelerates project delivery by enabling rapid Source Data Analysis.

Delivers a reusable, shared single view of application metadata to support project initiatives.

Improves communication and accuracy of data delivered to the business.

Reduces resource, cost and time involved in Source Data analysis by up to 90%

Critical IT initiatives and projects such as Data Warehouse, Big Data, Master Data Management, ETL, Data Integration and Migration, Data Governance, Data Modelling, Enterprise Architecture and others all share a common challenge.

This is the ability to access and understand the metadata which are the underlying foundations of the Enterprise Applications in the context of their projects.

Traditionally this task has been performed manually, relying on often incomplete documentation which does not incorporate customisations.

It has relied on the application specialist who may be a scarce resource and who may not fully understand what is required in the context of the project.

Safyr provides a unique solution to the problem faced by data architects, analysts and modellers when trying to use the information contained in Enterprise applications in the context of their projects.

It delivers the ability for organisations to create a single, consistent and accurate view of application metadata which can be shared and reused for different projects.

It reduces the time, cost and resource required to deliver knowledge about the data models which underpin those applications.

It enables this by extracting metadata including customisations from source systems and then allowing for it to be searched, filtered and the results exported to 3rd party tools.

# Technology overview

## APPLICATIONS

- SAP
- SAP BW
- SAP on HANA
- Oracle eBusiness Suite
- JD Edwards
- Siebel
- PeopleSoft
- Salesforce and Force applications
- Microsoft Dynamics AX 2012

## 'ETL for METADATA'

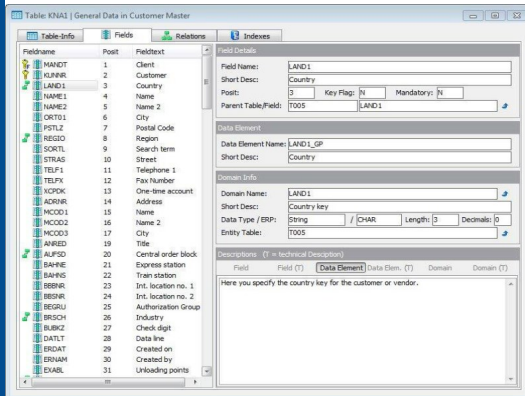
For applications not included above Safyr can be configured to map their metadata into its own metamodel. Please contact Silwood to discuss your particular packaged systems.

## PRE-CONFIGURED CONTENT

Business contextual metadata content is provided for a number of packages including SAP, JD Edwards and others.

## SHARE RESULTS

Results of Safyr analysis can be exported to modelling (e.g. ERwin, ER/Studio, PowerDesigner, IBM Rational Systems Architect), metadata management, integration and master data management tools.



Safyr extracts metadata from the Enterprise Application Data Dictionary including customisations. Using this unique method logical as well as physical names and descriptions are surfaced. This information is stored in a Safyr repository where users can work independently of the application itself.

Safyr's analysis features allow for easy navigation through complex data structures which, together with its powerful search, filtering and application hierarchy capabilities provide for rapid identification of the tables and related tables needed in the context of the task at hand. Users can also drill into the details of any table including fields, descriptions, attributes and indexes.

Results can be visualised in Safyr or exported to 3rd party tools.

"Silwood Technology is unique in having recognised, and acted on, the need for a better understanding of enterprise applications, notably the dominant ERP and CRM solutions provided by SAP and Oracle. Having this depth of understanding is critical for many enterprise projects, ranging from business intelligence to data governance, from data integration to master data management, and from data migration to application development...."

In our opinion, every major user of an Oracle or SAP application should be a Safyr customer."

Philip Howard, Bloor Research

## Key Features

- **Metadata extracted includes**
  - Tables      Fields      Views      Data elements
  - Customisations   Physical names   Logical names   Descriptions
- **Identifies Parent/Child relationships**
- **Performs table row count during extraction to allow filtering on tables containing data and reduce size of results sets**
- **Automatic creation of Application Hierarchy of Modules and associates tables with Programs and elements e.g. transaction codes (where applicable)**
- **Advanced features for search, filtering, scoping, analysis and visualisation of metadata**
- **Comparison of specific results sets or complete application instances with granular control over items to be compared**
- **Export results to modelling, integration and metadata management tools**

## SERVICES AVAILABLE

- Consulting
- Technical Support
- Product Training
- Product Updates

W: [www.silwoodtechnology.com](http://www.silwoodtechnology.com)  
 T: +44 1344 876553  
 E: [info@silwoodtechnology.com](mailto:info@silwoodtechnology.com)  
 Twitter: @silwood\_safyr

