

Digital Display Solutions



Attract attention

Increase footfall

Cross-sell & up-sell

Reinforce your brand or message

Make instantaneous changes

Engage, inform, entertain & educate

NEW

**Cloud management via
LAN, WiFi or 3G**

0808 129 4131
www.amtmedia.co.uk



Digital Advertising Displays



Optional Trolley



24/7 Usage



High Definition



Lockable Compartment



Wide Viewing Angle



Multiple Inputs



Plug and Play



Free Scheduling Software



Eco-Friendly Power Timer



Image, Video and Audio



Portrait, Landscape or Freestanding

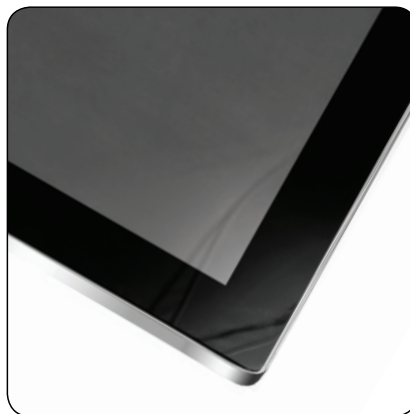
- Sleek styling, tempered glass facia, 24/7 operation and ultra-wide viewing angle
- Brighter than a domestic TV with no buttons or controls on show.
- Built-in media player for simple plug and play operation via a USB stick
- Supplied with FREE N-Dex Digital Poster Software
- Lockable USB compartment prevents unauthorised access
- Freestanding units feature a lockable compartment with internal power supply for external media player or small format PC
- Simple scheduling software allows the user to set up playlists with images, videos and music to play at different times of day
- Eco-friendly power timer allows auto switch-on & switch-off
- Ideal for use in corporate, retail, banks, restaurants, bars, cafés, hotels, conference centres, gyms, train/bus stations, travel agents, hospitals, schools, museums, exhibition displays, theatres, cinemas, etc
- 40" model includes integrated literature stand, ideal for retail
- Wall mounted: Available in 7", 10", 15", 24", 40", 46", 55", 65", 70", 82" models
- Freestanding: Available in 40", 46", 55", 65", 70" and 82" models



Slimline LED Displays - Wall Mounted

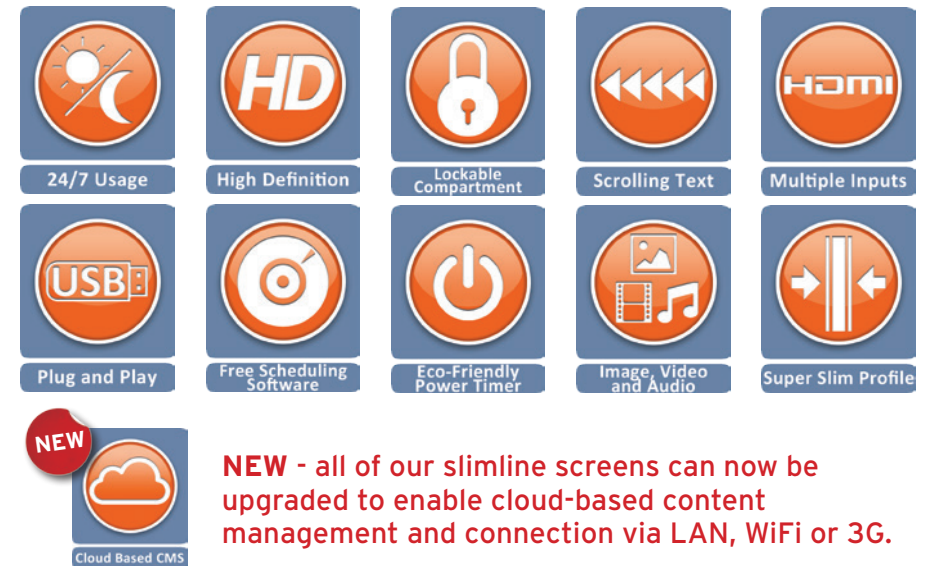


NEW **NEW - all of our slimline screens can now be upgraded to enable cloud-based content management and connection via LAN, WiFi or 3G.**



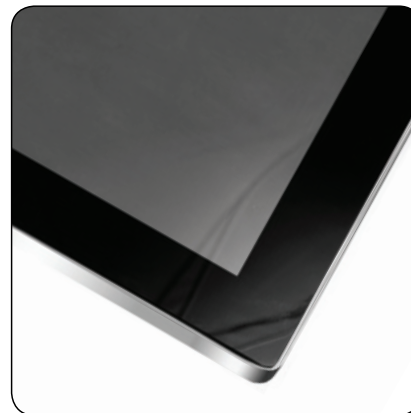
- Elegant eye-catching styling, super-slim profile, rounded corners, aluminium framing, button-less tempered glass facia
- 24/7 operation
- High brightness, high contrast, ultra-wide viewing angle
- All models support scrolling text content
- Built-in media player for simple plug and play operation via a USB stick
- Supplied with FREE N-Dex Digital Poster Software
- Lockable USB compartment prevents unauthorised access
- All models include a free landscape/portrait mounting bracket
- Simple scheduling software allows the user to set up playlists with images, videos and music to play at different times of day
- Eco-friendly power timer allows auto switch-on & switch-off
- Ideal for use in corporate, retail, banks, restaurants, bars, cafés, hotels, conference centres, gyms, train/bus stations, travel agents, hospitals, schools, museums, exhibition displays, theatres, cinemas, etc
- Available in 19", 22", 32", 42", 46" and 55" models

Slimline LED Displays - Freestanding

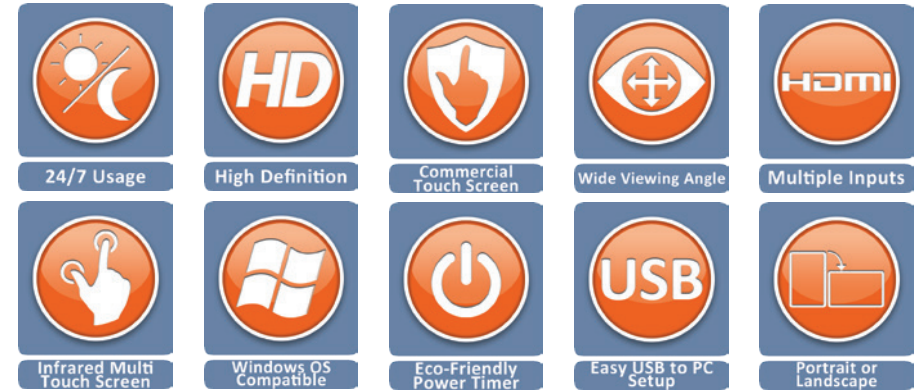


NEW - all of our slimline screens can now be upgraded to enable cloud-based content management and connection via LAN, WiFi or 3G.

- Elegant eye-catching styling, super-slim profile, rounded corners, aluminium framing, button-less tempered glass fascia
- 24/7 operation
- High brightness, high contrast, ultra-wide viewing angle
- All models support scrolling text content
- Built-in media player for simple plug and play operation via a USB stick
- Supplied with FREE N-Dex Digital Poster Software
- Lockable USB compartment prevents unauthorised access
- All models feature a lockable compartment with internal power supply for external media player or small format PC
- Simple scheduling software allows the user to set up playlists with images, videos and music to play at different times of day
- Eco-friendly power timer allows auto switch-on & switch-off
- Ideal for use in corporate, retail, banks, restaurants, bars, cafés, hotels, conference centres, gyms, train/bus stations, travel agents, hospitals, schools, museums, exhibition displays, theatres, cinemas, etc
- Available in 46" and 55" models



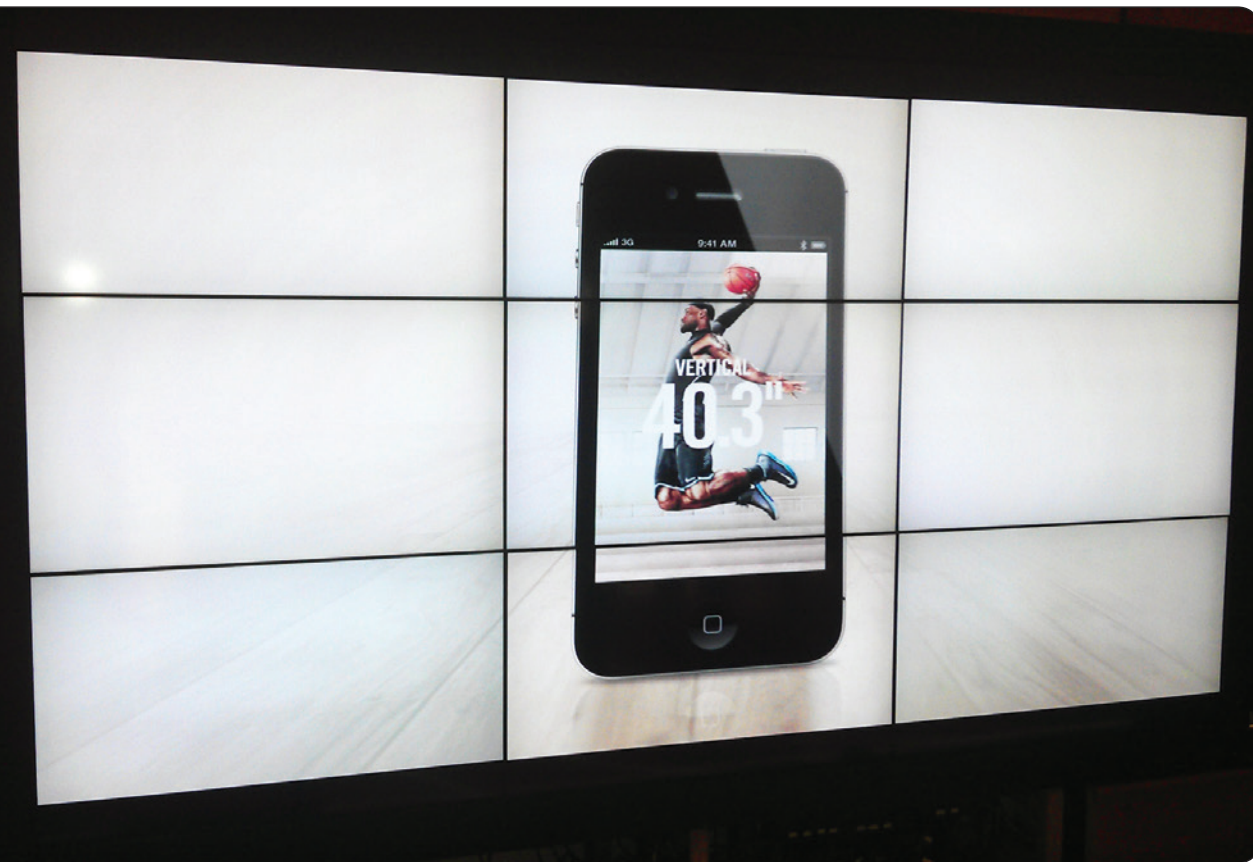
Multi Touch Screen Displays



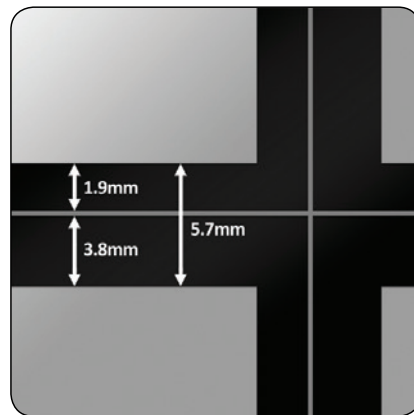
- Sleek styling, tempered glass facia, 24/7 operation and ultra-wide viewing angle
- Available in wall-mount, freestanding and tabletop models
- Eco-friendly power timer allows auto switch-on & switch-off
- Ideal for public locations as a finger, gloved hand, pen or stylus can be used as a pointer
- Activating the screen requires no pressure, increasing reliability and improving the user experience
- Multi-touch technology allows additional flexibility and functionality
- Ideal for use in corporate, retail, banks, restaurants, bars, cafés, hotels, conference centres, gyms, train/bus stations, travel agents, hospitals, schools, museums, exhibition displays, theatres, cinemas, etc
- Wall mount model available in 32", 42", 46", 55", 65", 70", 82"
- Freestanding model available in 40", 46" and 55"
- Tabletop model available to order with various mounting options and finishes



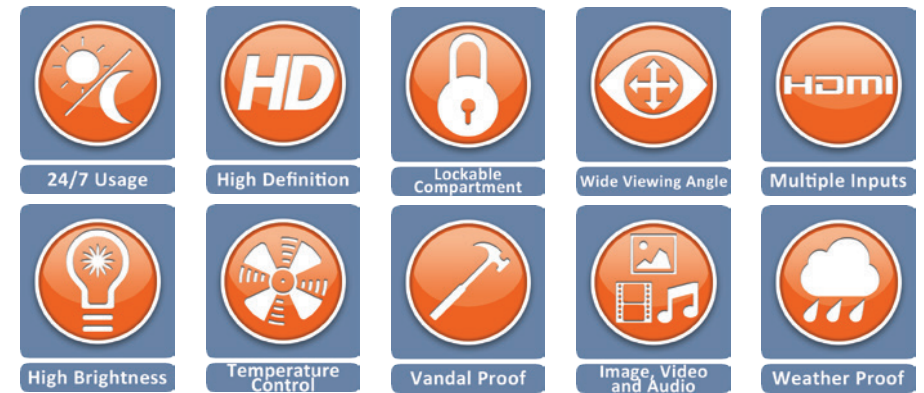
LCD Video Wall Displays



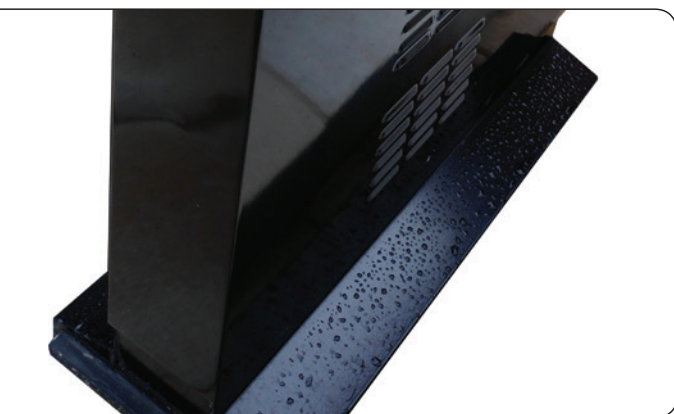
- Samsung LED technology for high brightness, high contrast, vivid colours and low power consumption
- Thin and ultra-thin bezel options for video-wall use
- Automatic tiling function for large multi-screen displays
- Designed for 24/7 operation with ultra-wide viewing angle
- Eco-friendly power timer allows auto switch-on & switch-off
- Supplied with FREE N-Dex Digital Poster Software
- Ideal for use in corporate, retail, banks, restaurants, bars, cafés, hotels, conference centres, gyms, train/bus stations, travel agents, hospitals, schools, museums, exhibition displays, theatres, cinemas, etc
- Available in 32", 40", 46", 55" models



Outdoor Digital Posters



- Suitable for use in the harshest of outdoor conditions
- Robust outer casing with IP65 rating
- Built-in air-conditioning allows the display to work at optimal temperature in any climate, from -20 to +60°C
- Roughly 3 times brighter than a standard domestic TV, allowing easy readability in bright conditions
- Designed for 24/7 operation with ultra-wide viewing angle
- Supplied with FREE N-Dex Digital Poster Software
- Lockable compartment with internal power supply for external media player or small format PC
- Ideal for use in corporate, retail, banks, restaurants, bars, cafés, hotels, conference centres, gyms, train/bus stations, travel agents, hospitals, schools, museums, exhibition displays, theatres, cinemas, etc
- Available in 46" and 65" models



Applications...

Corporate | Retail | Leisure | Showrooms | Waiting Areas | Banks | Restaurants | Bars | Cafés | Hotels | Conference Centres
Gyms | Train/Bus Stations | Travel Agents | Hospitals | Schools | Museums | Exhibition Displays | Theatres | Cinemas etc

Easy Design

All of our screen packages include FREE N-Dex Digital Poster Software, which allows you to create exciting, eye-catching content quickly and easily.

Easy Management

Many of our screens also feature a scheduling system, which enables you to choose when a particular piece of information or an offer should be displayed, eg a breakfast menu in the morning.

Easy Customisation

Our dedicated design team can create custom frames and custom content to help you really stand out from the crowd. Add a logo, telephone number, website address or corporate message to the screen surround, or let us create some eye-catching backgrounds for your poster screens.

FREE
N-Dex Poster
Production
Software
with every
screen



For more information please contact:

AMT Media Ltd

Waterloo House, Longbridge Street, Newtown, SY16 2BJ

Tel: 0800 129 4131 | Fax: 01686 650170

Email: info@amtmedia.co.uk | Web: www.amtmedia.co.uk