



Innate Immunity Range

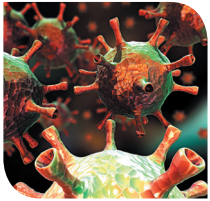
Antibodies and Reagents for Immunological Research

Innate Immunity Range



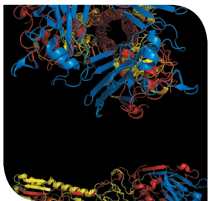
Macrophage & Dendritic Cell Markers

- Evolving range of macrophage, monocyte and dendritic cell markers, performance guaranteed in various key immunological applications
- Our mouse macrophage marker F4/80 (MCA497) is extensively characterized, highly validated and recommended in a wide variety of applications with over 900 citations on CiteAb
- Species focus: human, mouse and rat



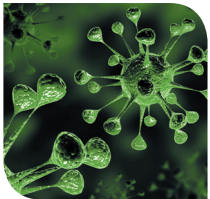
Complement

- Continually developing range of antibodies and recombinant proteins covering pivotal components of the complement cascade
- Antibodies against C4d (2222 - 8004) the complement component, which is the principal marker of graft rejection, guaranteed in ELISA, Immunohistochemistry, Immunofluorescence, Western Blotting and Electron Microscopy
- Species focus: human



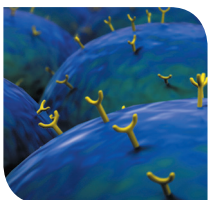
Cytokines & Chemokines

- Range of recombinant proteins and antibodies to major cytokines, chemokines and their associated receptors
- Large portfolio of interleukin (IL), interferon (IFN) and tumor necrosis factor (TNF) antibodies and proteins
- Antibodies are guaranteed to work in a number of applications such as Western Blotting, Immunohistochemistry and ELISA (including a large number of validated matched ELISA pairs)



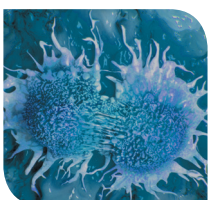
NK Cells & Receptors

- Antibodies to key traditional markers plus more recently discovered signaling and effector molecules
- The range includes antibodies against cytokines, receptors and pathogen proteins involved in the activation and inhibition of NK cells
- Antibodies are also available to molecules secreted by NK cells



Pattern Recognition Receptors (PRR)

- Wide variety of antibodies to the main types of PRRs: toll-like receptors (TLR), C-type lectin receptors (CLR), RIG-I-like receptors (RLR) and NOD-like receptors (NLR)
- PRR antibodies are available against key signaling and effector molecules, with a species focus on human and mouse
- Broad range of antibodies to mouse and human TLRs including those involved in the TLR signaling cascade and TLRs expressed on adaptive immune cells



Apoptosis & Cell Viability

- Extensive range of apoptosis and autophagy antibodies
- Comprehensive range of cell proliferation antibodies and cell viability detection reagents
- Apoptosis detection kit range includes a variety of kits such as ANNEXIN V, Caspase FLICA™, MitoPT™ and Apo-BrdU™ TUNEL

AbD Serotec Innate Immunity Range: Trusted By Researchers

Range at a glance

Research Areas

- Apoptosis & Cell Viability
- Complement
- Cytokines & Chemokines
- Pattern Recognition Receptors
- Toll-like Receptors

Cell Types

- Dendritic Cells
- Macrophages
- NK Cells & Receptors

AbD Serotec provides an extensive collection of antibodies, reagents, controls and standards for innate immunity research, with performance guarantee in key immunological applications including Flow Cytometry, Immunohistochemistry, Immunoassays, Western Blotting, ELISA and Immunofluorescence.

Did you know?

- There are over 4000 products within the Innate Immunity portfolio
- Human, mouse and rat are the primary species covered in the range
- The Innate Immunity antibody range is highly trusted by researchers:
 - With over 11,000 references listed on our website
 - F4/80 clone Cl:A3-1 has over 900 citations on CiteAb
 - Antibodies to CD68 have over 400 citations on CiteAb
- Range includes antibodies, kits, reagents, standards and controls
- For all your multicolor Flow Cytometry needs, antibodies are available conjugated to a large selection of Alexa Fluor®, DyLight® and conventional dyes such as FITC and PE. Also available are handy prepared cocktails either dual or triple colored

Featured Product:

Rat macrophage marker antibody CD68 (MCA341GA)

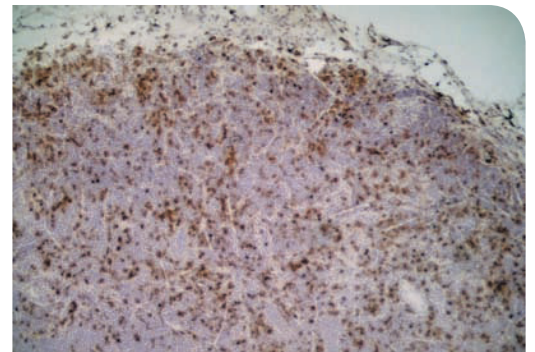
Mouse anti-rat CD68, clone ED1, recognizes the rat ED1 antigen, which is expressed on most macrophage populations as well as monocytes and is considered as a pan-macrophage marker in the rat (Damoiseaux et al. 1994). With the expression of ED1 antigen being predominantly cytoplasmic (Dijkstra et al. 1985), Flow Cytometry results are improved by the use of a membrane permeabilization procedure, such as Leucoperm™(BUF09), prior to staining.

Find out more at abdserotec.com

Cited references

Damoiseaux JG et al. (1994). Rat macrophage lysosomal membrane antigen recognised by monoclonal antibody ED1. *Immunol.* 83: 140-147.

Dijkstra CD et al. (1985). The heterogeneity of mononuclear phagocytes in lymphoid organs: distinct macrophage subpopulations in the rat recognised by monoclonal antibodies ED1, ED2 and ED3. *Immunol* 54: 589-599.



Anti-rat CD68 (MCA341) Immunoperoxidase staining

Rat lymph node cryosection with mouse anti-rat CD68 antibody, clone ED1 (MCA341) followed by horseradish peroxidase conjugated goat anti-mouse IgG1 antibody (STAR132P) as a detection reagent.

Citations: Over 200 on CiteAb

Applications:

Flow Cytometry, Immunofluorescence, Immunohistochemistry - frozen and paraffin, Immunoprecipitation, Western Blotting and Radio-immunoassays

Related Products:

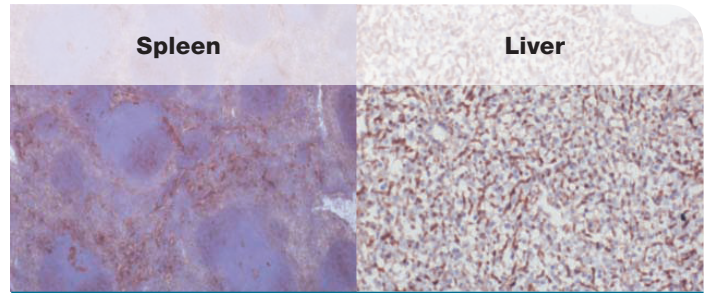
Leucoperm™ reagent (BUF09), mouse IgG1 negative control (MCA1209), human macrophage marker CD80 (MCA2071, clone MEM-233) and mouse macrophage marker Ly6C (MCA2389, clone ER-MP20)

Featured Product: Mouse Fc receptor antibodies

The rat anti-mouse Fc receptor range encompasses the four distinct mouse Fc receptors (FcR), including the most recently discovered FcRIV:

- FcRI (CD64, MCA5997)
- FcRIIB (CD32B, MCA6000/MCA6001)
- FcRIII (CD16, MCA5998)
- FcRIV (CD16-2, MCA5999)

These Fc receptors have the ability to either activate or inhibit cellular processes such as phagocytosis and antigen presentation. The full range enables the identification and differentiation between activating (FcRI, FcRIII, FcRIV) and inhibitory (FcRIIB) mouse Fc receptors.



Anti-mouse CD32B (MCA6000)

Immunohistochemistry staining

Acetone-fixed frozen sections of BALB/c WT mouse spleen and liver (10um) using antibody MCA6000 (clone AT130-5), followed by an anti-rat IgG HRP polymer and counterstained with haematoxylin.

Citations: 3

Applications: Flow Cytometry, Immunohistochemistry - frozen

Related Products:

Goat anti-rat IgG: HRP (STAR112P-STAR115P, isotype specific), rat IgG2b negative control: FITC (MCA1125F), rat IgG2b negative control: (MCA1125R), rat IgG2a negative control: FITC (MCA1124FT), rat IgG2a negative control: (MCA1124R), rat IgG1 negative control: FITC (MCA1123FT), rat IgG1 negative control: (MCA1123)

New Application Resources

No Experiment is Complete Without All the Pieces

Complete yours at
abdserotec.com/applications



For More Information
abdserotec.com/innate

Americas

Toll Free: +1 800 265 7376 (USA & Canada)
Tel: +1 919 878 7978
Email: abd_sales_us@bio-rad.com

Europe

Tel: +49 89 80 90 95 21
Email: abd_sales_de@bio-rad.com

UK & Worldwide

Tel: +44 1865 852 700
Email: abd_sales_uk@bio-rad.com

abdserotec.com

Bio-Rad
Laboratories, Inc.

BIO-RAD