



# ANNUAL REPORT

## 2017/18



CHILD DEVELOPMENT CENTRE  
明德兒童啟育中心





## CONTENTS

- 3 ABOUT US
- 4 MESSAGE FROM OUR CHAIRMAN
- 6 HIGHLIGHTS OF YEAR 2016-2017
- 8 DELIVERING GROWTH
- 10 SUPPORTING PARENTS & FAMILIES
- 13 SHARING EXPERIENCE & INSIGHT
- 16 INNOVATION
- 18 STAFF DEVELOPMENT
- 20 LOOKING AHEAD
- 22 GOVERNANCE PRINCIPLES
- 24 THE EXECUTIVE COMMITTEE
- 25 ORGANISATION CHART
- 26 FINANCIAL HIGHLIGHTS
- 27 HONORARY AUDITORS' REPORT
- 30 ACKNOWLEDGMENTS

## ABOUT US

The Child Development Centre ("CDC") is a not-for-profit organisation, informally set up in 1976 and officially constituted in 1978. For over 40 years, the CDC has provided support to a wide spectrum of children with Special Educational Needs (SEN) in English and Chinese.

Our staff members adopt an interdisciplinary approach to facilitate children's development taking into account the children's individual needs. We provide them with services such as assessments, group setting early intervention programmes, speech therapy, occupational therapy, sensory processing, social skills training, attention and behavioural support to ignite their learning journeys.

Aside from providing educational services for children, the CDC is also committed to serving their families as well as the whole community. We help empower parents as well as child-care professionals through family support and counselling services, professional school support and child development training.

**Igniting Learning Journeys, one child at a time**

### Vision

For every child to succeed in their unique learning journey.

### Mission

To provide quality learning experiences for the individual child and empowering their families.



## MESSAGE FROM THE CHAIRMAN

This year was an exciting year for the CDC. We retained all of our successful programmes, whilst ensuring that they were reviewed periodically to guarantee services delivered are appropriate for our students. We were honoured to receive the Certificate of Excellence in the Hong Kong Sustainability Award 2016/2017 from the Hong Kong Management Association (HKMA). This award served as recognition of our continuing effort and commitment to demonstrate sustainability in our operations and governance.

Financial sustainability is one of the Executive Committee's priorities. The Committee strives to demonstrate a high level of accountability and transparency to our donors, ensuring that they have influence over, and know exactly how their money is spent.

As our society evolves, we believe that the CDC should foster wider partnerships within the community to raise public awareness of children with SEN. This year, we worked closely with our community partners to publish a Guide for Teachers and Therapists, as well as organising an educational seminar on "The Whole Child Approach".

In response to the keen demand for occupational and sensory integration therapy services, the CDC was delighted to be able to build an additional, well-equipped motor therapy room. With this new room, the CDC was able to provide 21 additional sessions of occupational and sensory integration therapy per week.

In March 2018, the CDC announced the departure of Virginia Wilson as Chief Executive (CE). Virginia served as the CE for 13 years and played a critical role in the development and success of the organisation. We would like to thank Virginia again for the passion, enthusiasm and motivation she gave the CDC and its staff over the years. We wish her all the best in her new endeavour.

Whilst conducting a search to find a new Chief Executive for the CDC, we will also review and revise the organisational structure in order to maintain a high standard of performance. During this transition period, Dr. Yvonne Becher, a long-term staff member of the CDC, will be the acting Chief Executive until an appropriate candidate has been appointed. We wish her success in her new role and are confident that she will lead the CDC to greater heights.

Going forward, we embrace the use of the latest technology to support the children and families that the CDC serves. We were delighted to form a partnership with a corporate sponsor to develop a tailor-made online platform which will help track the children's individual learning progress. The platform is scheduled to be launched early 2019 and we believe it will help more children achieve success during their learning journeys.

*Sabrina*

Sabrina Ho  
Chairman

# HIGHLIGHTS OF YEAR 17/18

## DADDY DAUGHTER BALL 2017

Over 480 fathers and daughters attended the Daddy Daughter Ball 2017. We raised HKD\$2.5 million (net) to support the programmes and services at the CDC.



3<sup>rd</sup> June 2017

## THE OPENING OF THE NEW SENSORY INTEGRATION & MOTOR THERAPY ROOM

The new motor therapy room was furnished with equipment appropriate for occupational and sensory integration therapy.



Mid-Oct 2017

## HONG KONG SUSTAINABILITY AWARD 2016/17

We were delighted to receive the Certificate of Excellence in the Hong Kong Sustainability Award 2016/17.



16<sup>th</sup> Nov 2017

## DEVELOPMENT OF THE DIGITAL INTERACTIVE PLATFORM FOR CHILDREN'S LEARNING PROGRESS

We were delighted to receive a generous HK\$200,000 donation from FWD Hong Kong to develop The Digital Interactive Platform for Children's Learning Progress.



22<sup>nd</sup> Feb 2018



## THE WHOLE CHILD APPROACH SEMINAR

Dr. Rona Tutt (2nd left) and Mrs. Tricia Murphy (2nd right), two experienced SEN experts from the U.K., presented a seminar entitled "The Whole Child Approach".

24<sup>th</sup> Aug 2017



## CDC'S GUIDE FOR TEACHERS AND THERAPISTS WAS PUBLISHED AND LAUNCHED

Executive Committee members joined staff members to host the launch ceremony of the CDC's Guide for Teachers and Therapists.

25<sup>th</sup> Oct 2017



## PARENT-CHILD CERAMIC WORKSHOPS AT TUNG YAO

The ceramic workshops offered numerous opportunities for our children to learn and practice skills outside of the classroom such as eye-hand coordination and strengthening of their hands and fingers.

3<sup>rd</sup> Feb 2018



## FAMILY FUN DAY AT DISNEYLAND

51 CDC families enjoyed a memorable and joyful experience at Hong Kong Disneyland.

4<sup>th</sup> March 2018

# DELIVERING GROWTH

## Programmes & Services

We believe that early intervention for children with SEN means to “Facilitate to learn”. The primary goal of our work at the CDC is to foster and nurture the growth of young children. This year, we continued to maintain high-quality programmes and extended our services and facilities as outlined below.



**SERVED** children in programmes, assessments & consultations  
**430**  
 an **INCREASE** of 7%

**43% increase** in the number of hours of group programmes



**35% increase** in the number of hours of individual therapies



**8% increase**



in the number of individual assessments

**GIFTED**



**315.5 HOURS**

of financially-assisted services to support underprivileged families.



### ❖ Extended Early Intervention Group (EIG) programmes

Starting from August 2017, we **extended** the schedule of our **EIG programmes** from **1.5 hours to 2 hours** per session in order to provide more focused input across all domains for children with SEN.

- Compared with the previous year, the intervention delivered through our EIG programmes increased from 801 hours to **954.5 hours of service**.
- Over **130 placements** received the revised extended hours of the EIG programmes.

### ❖ Established an additional motor therapy room

With the increasing demand for occupational therapy (OT) and sensory integration therapy (SI) sessions, we expanded our services by establishing a new, fully-equipped motor therapy room in Mid-October 2017.

With the new gym, we **increased our OT/SI services by an additional 21 sessions per week** starting from November 2017. In addition, there was a **50% decrease** in the number of children on our wait list for OT/SI services in the first month with the new gym.

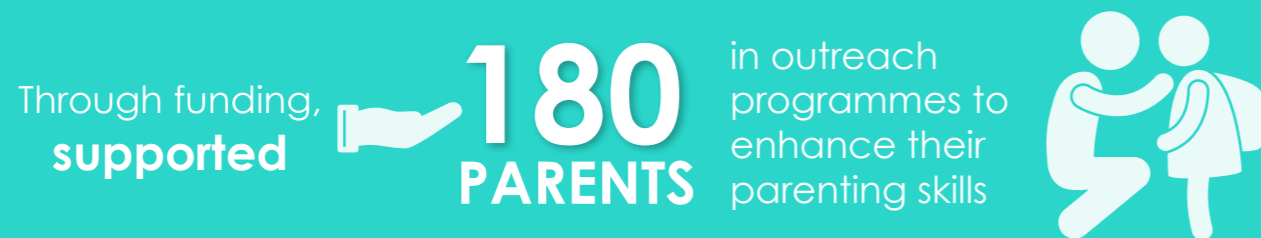
### ❖ Offered Training Subsidy Programmes

To further enhance the support for children on the Government wait list of subvented pre-school rehabilitation services, we offered services to children eligible for the “Training Subsidy for Children who are on the Waiting List of Subvented Pre-school Rehabilitation Services” Programme (TSP) administered and funded by the Social Welfare Department from October 2017. We provided **42 TSP sessions with a total of 63 hours** to children waiting for services.

# SUPPORTING PARENTS & FAMILIES

## Improving Lives

Parent engagement is important in the learning journeys of children with SEN. At the CDC, we operate a series of support programmes to empower parents and enable them to gain a better understanding of their child's needs and master relevant parenting skills. We continue to offer a variety of benefits for our families in order to develop positive family relationships.



### ❖ Parent training

We were delighted to receive funding from the Peter Chan Jee Yat Charitable Foundation to organise a new parenting programme “*It Takes Two to Talk® – The Hanen Program*”. The programme is designed specifically for parents and caregivers of children with language delay, teaching practical strategies to promote children’s language skills in a functional and meaningful context.

We conducted 2 intakes of “*It Takes Two to Talk® – The Hanen Program*” for **16 parents/caregivers**.



Feedback from our Senior Speech and Language Therapist Ms. Rita Tam (Certified “*It Takes Two to Talk® - The Hanen Program*” practitioner)

“I found that the Hanen Programme was able to empower parents with further knowledge as to how they themselves can help improve their children’s language, and at the same time, strengthen the parent-child bond. It was really encouraging for me as a therapist to see parents feel encouraged as they talk to and share ideas with one another”.

# FAMILY EVENTS

Day trips and special outings are important in a child's development and can help strengthen family relationships. With the sponsorship and generosity from supportive corporations and partners, we organised various family events.

## Centre Trip - Kadoorie Farm

22<sup>nd</sup> October 2017



Staff and volunteers accompanying the **15 CDC families** who enjoyed a wonderful day at Kadoorie Farm.

## CDC Christmas Party

15<sup>th</sup> December 2017



Staff and volunteers preparing to host **42 CDC families** at the Christmas party.

## Tung Yao parent-child ceramic workshop

3<sup>rd</sup> February 2018



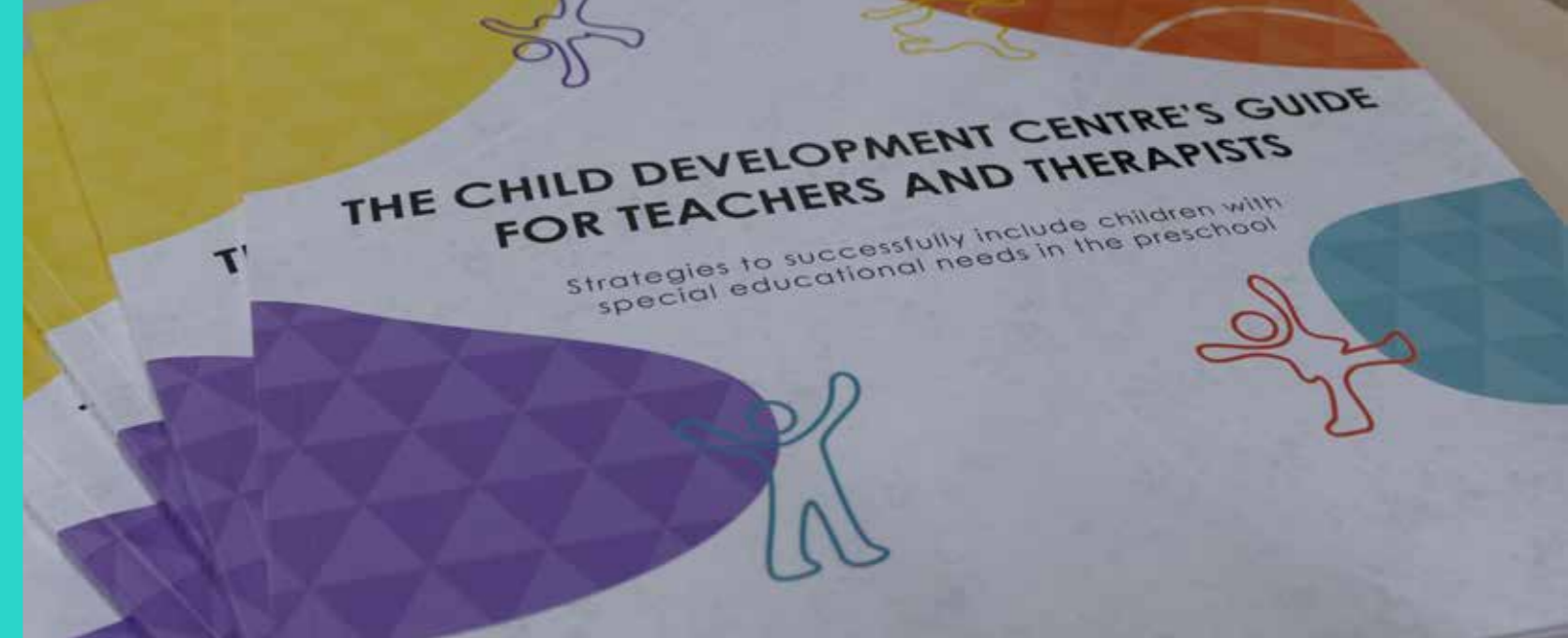
With support from the Tung Yao Ceramic Design Studio, **26 CDC families** participated over the course of three parent-child ceramic workshops.

## Family Fun Day at Disneyland

4<sup>th</sup> March 2018



**51 CDC families** received complimentary tickets through the Hong Kong Disneyland Community Involvement Programme.



# SHARING EXPERIENCE & INSIGHT

## Cultivating Inclusion & Community Engagement

At the CDC, we work closely with our community partners to help advocate for social inclusion and equal opportunities for all children. This year, we were particularly dedicated to sharing knowledge with other professionals, bringing in world renowned experts and new ideas to the sector.

### ❖ A Guide for teachers and therapists in preschools

With the generous sponsorship from The Swire Group Charitable Trust, we launched a "Guide for Teachers and Therapists: Strategies to successfully include children with special educational needs in the preschool" on 25th October 2017. The project commenced in January 2016 and incorporated the extensive expertise of the CDC's multidisciplinary team. With easy-to-use strategies and top tips, the Guide is designed to assist teachers and therapists in supporting children with SEN in preschool settings. It also acts as a resource to use in staff training.

*"I strongly recommend this Guide, which has been created by a team of teachers and therapists working at the CDC. It contains a wealth of information for the professionals working at the Centre, but also for those in other settings where young children who have special educational needs are receiving the support they need and deserve".*

**Recommended by Dr. Rona Tutt, OBE, the past president of the National Association of Head Teachers in the UK.**

Following the production of the Guide, we organised **23 information-sharing sessions** for **18 kindergartens and organisations** during the year of 2017/18, with over **500 participants in attendance**. All the sessions were hosted by our therapists, SEN teachers or psychologists and every attendee received a copy of the Guide to use in their educational settings.



From left to right: Virginia Wilson (Chief Executive); Dr. Rona Tutt (Speaker); Tricia Murphy (Speaker); John Ball (CDC Advisor)

### ❖ The Whole Child Approach Seminar

The CDC invited two experienced SEN experts from the U.K. to host an educational seminar entitled "The Whole Child Approach" on 24 August 2017 in the Auditorium of The Hong Kong Council of Social Service. The event was well attended by more than 100 educators, psychologists, therapists and parents.

### ❖ The Kindergartens Festival 2017

We were pleased to be sponsored by the South China Morning Post (SCMP) to have an exhibition booth at the Kindergartens Festival 2017 on 29th April and 27th May.

Our Head of Psychological Services – Dr. Yvonne Becher was one of the panel discussion speakers on the topic "Signs of Something Special: Individual Learning Needs" together with other education experts.

### ❖ International Schools Festival

On 16th September 2017, the CDC participated in the International Schools Festival organised by the SCMP Education Post. The event reached **more than 3,500 visitors**. It was a great occasion for us to connect and interact with people in the sector along with the general public. The event enabled us to introduce our individualised education services, not to mention raising awareness about the importance of early intervention.



The Kindergarten Festival 2017



International Schools Festival 2017

# TRANSFORMING OUR COMMUNITY

## ❖ Press Interview

Through interviews with HKET, AM730, Metro Daily, Sky Post and TVB Weekly, Ethan and his family shared the obstacles they faced, and further discussed his successful journey into a mainstream primary school.

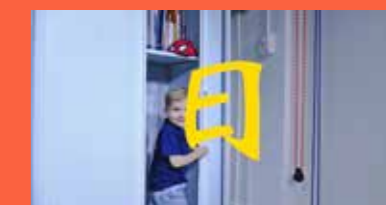
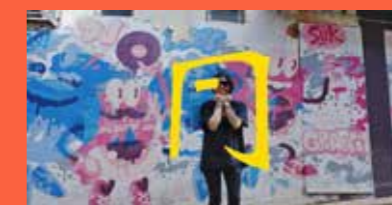


## ❖ Online Community

This year, we created 2 video series for parents on our YouTube channel.

### Learn the 7 Basic Rules to Chinese Stroke Order!

A fun and educational rap song and dance to help children learn the 7 basic rules to Chinese writing stroke order!



## Fun & Learning with Toys Series

This video series helps parents and other adults to come up with creative ways of playing with toys and engaging in play with young children.







## INNOVATION

### Partnership & Fundraising

Donations and partnerships have been vital in supporting our professional services. We strived to raise funds from a diverse variety of resources and actively collaborated with different sectors to support the provision and expansion of our services.

#### ❖ Developing a Digital Interactive Platform

On the 22nd February 2018, we were delighted to receive a generous donation from FWD Hong Kong to develop a Digital Interactive Platform, which aims to enhance the learning progress of children with SEN both at home and at the CDC. The Platform will be developed in both English and traditional Chinese and is targeted to be tested at the end of 2018, and put into service in early 2019.



The, then Chief Executive of the CDC, Virginia Wilson received a HK\$200,000 donation from Paul Tse, Chief Marketing Officer of FWD Hong Kong and Macau.

#### ❖ The 8th Daddy Daughter Ball

Our annual fundraising event, the Daddy Daughter Ball, was successfully held at the Grand Hyatt Hong Kong on 3rd June 2017. With the support of **over 480 fathers and daughters**, we raised **over \$2.5 million net**. All of the proceeds of the event will go to support the programmes and services at the CDC.

#### ❖ Early Child Development (ECD) Screening Outreach Programme

We have been able to continue offering the ECD screening outreach programme to underprivileged families thanks to the Ohel Leah Synagogue Charity (OLSC). We successfully organised **15 sessions** of the ECD screening outreach programme for **99 children and 137 parents** throughout the year.

#### ❖ Caring Company Partnership

We nominated **18 companies/organisations** for the 'Caring Company' or 'Caring Organization' logo in 2017/18. We wish to thank all our partners for joining our efforts in helping children with SEN.

#### ❖ Beneficiary Events

We were honoured to receive generous support from all the following corporates and organisations who donated the proceeds of their events to the CDC. With their support we are able to continue to provide and improve on the specialised and tailored early intervention services that we provide for children with SEN.

- The Fleming Relaunch on 27th October 2017.
- The Fine Wine Experience from October to December 2017.
- Cecilian Singers Christmas Concert on 6th December 2017.



## STAFF DEVELOPMENT

We believe collective efforts yield longer achievement for the organisation as a whole. Therefore, we place a strong emphasis on continuing professional development for our staff, as well as facilitating open discussion among employees and management.

Every year, as part of our Continuing Professional Development (CPD), we organise two days for staff development, one for staff professional training in relevant areas, and the other for team building.

### ❖ Staff Training

We value staff training as it helps to enhance the expertise of our staff and to keep them up-to-date with the resources and developments related to their profession. Throughout the year, various CDC staff members participated in seminars or training courses related to SEN, including the “Heep Hong Society Happy Parenting Training”, “More Than Words® - The Hanen Program” and “Oral Placement Therapy Level 2”. In August, all of our service staff joined a seminar; “Assess / Plan / Do / Review Cycle”, which was presented by Dr. Rona Tutt, OBE & Mrs. Tricia Murphy.

### ❖ Long Service Award

We continue to recognise the services of our employees, who have worked for the CDC for five years or more, with the award of a small token of appreciation at the Year-end Staff Gathering. Such recognition is given to eligible employees at every five-year interval. The approximate value of each five-year token of appreciation is approved by the Executive Committee (EC) and recorded in the CDC's Finance Manual.



### ❖ Staff Training Allowance

Staff members are given full or partial financial assistance to participate in various skills-based trainings. An education allowance is also granted if further education advancement or professional qualification is required at work.

### ❖ Staff Meetings

In order to discuss and evaluate our services and performance, the centre management team meets on a weekly basis. Additionally, once a month there is a meeting for all staff members in order to ensure a good communication flow and provide opportunities for the discussion of current business.

# LOOKING AHEAD >>

## ❖ PROGRAMMES & SERVICES ❖

### LAUNCHING



a series of  
**new  
intervention  
approaches**

to enhance our services

**Planning** and **offering**  
services to support  
children with  
SEN integrated  
in **mainstream  
educational  
organisations**



## ❖ PARENT & FAMILY SUPPORT ❖

Maintaining and enhancing  
our focus on  
**parent and family support**  
with the **aid of donors**  
+  
exclusive  
**feedback from parents**



Providing additional  
comprehensive  
**parenting programmes**  
and **workshops** for  
families to enhance  
parenting skills and  
establish improved  
**Parent-Child  
Relationships**



## ❖ ADVOCACY & COMMUNITY ENGAGEMENT ❖



Furthering our  
relationships and  
collaborations  
within

**local and international  
kindergartens**



Creating a brand **new**  
Youtube video series  
**SOCIAL SKILLS LEARNING TIPS  
FOR PRESCHOOLERS**



## ❖ PARTNERSHIP & FUNDRAISING ❖



Launching the  
Digital Interactive Platform  
in **early 2019**



into other  
**fundraising initiatives**  
to diversify our  
funding base



## ❖ STAFF DEVELOPMENT ❖

Improving the organisational structure  
and continuing our commitment  
to staff development and empowerment



Identifying suitable  
professional training for staff members





## GOVERNANCE PRINCIPLES

We understand it is important for our stakeholders to know how the CDC is governed.

### ❖ CDC Principles

- Following our Vision and Mission
- Complying with Statutory & Regulatory Requirements
- Being Accountable for Public Monies and Services Provided
- Full Transparency and Communication with Stakeholders

### ❖ Our Governance Structure

The Child Development Centre is governed by the Executive Committee, the Chief Executive and the Senior Leadership Team.

The Executive Committee has three standing committees including the Nominations, Finance and Staffing Committee. The Committee members are all volunteers from the current CDC parent community, the local Hong Kong community, and professionals in accounting and legal fields. The CDC does not limit the term of office for the Committee members due to the small nature of the organisation. Committee members step down annually and may be subsequently re-elected at the Annual General Meeting (AGM). The Committee meets eight to ten times a year to help the Chief Executive and the Senior Leadership Team govern and maintain the strategic direction of the CDC.

The Senior Leadership Team consists of: The Chief Executive (CE); two Directors; Programme Development & Learning and Community Development & Operations; Assistant Director, Programme Development & Learning and the Controller, Risk and Compliance. The Senior Leadership Team manages the daily operation of the Centre and reports to the Executive Committee.

### ❖ Financial Management

Recognising the public concern regarding the proper use of the Lump Sum Grant (LSG) and any LSG reserves by non-governmental organisations, we continue to uphold the practice of utilising the entire sum of the LSG without holding any reserve. We plan to continue using the full LSG on our services in the future and refrain from holding any in reserves.

Any reserves accrued through the Provident Fund (PF) received from the SWD will only be used to benefit staff members in accordance with CDC's current policy approved by the Executive Committee.

### ❖ Others

- A 3-year Strategic Plan
- Delineation of responsibilities between the Executive Committee and the Senior Leadership Team
- Performance Measures & Monitoring
- Internal Controls and Reporting
- External Reporting and Audit
- Budget and Financial Management
- Risk Management Procedures
- Corporate Citizenship

# THE EXECUTIVE COMMITTEE



**Sabrina Ho**  
Chairman



**Tinuade Bergkvist**  
Vice-chairman



**Wayne Tam**  
Honorary Treasurer



Margaret  
Chang



Calvin  
Hsu



Jackie  
Hui



Gordon  
Jones



Henson  
Lam



Sonia Chan  
Lee



Kay  
McArdle



Linda  
Da Silva<sup>[1]</sup>



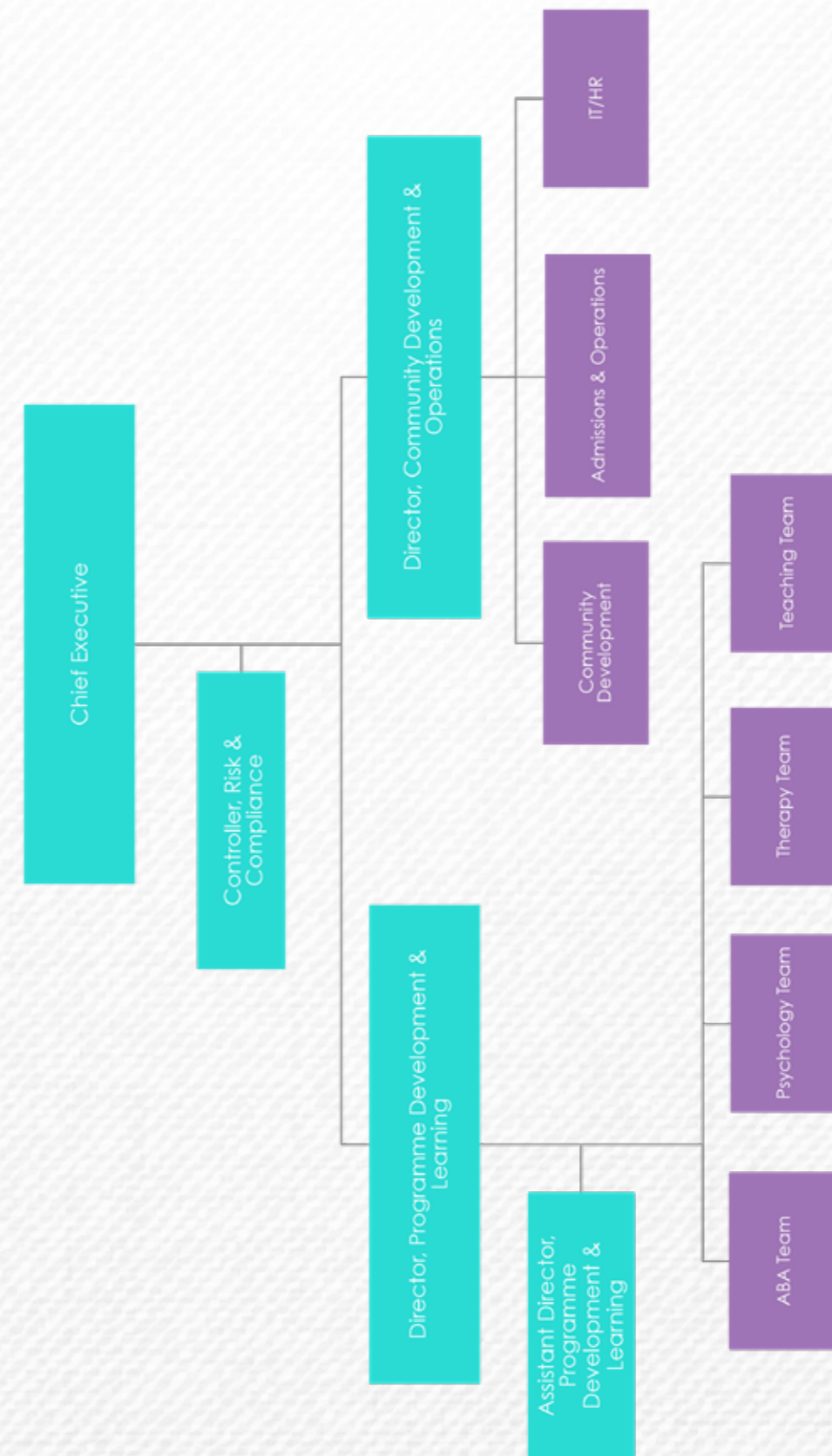
Abigail  
DeLessio<sup>[2]</sup>



Abigail  
Porter<sup>[2]</sup>

[1] Resigned on 15 May 2017  
[2] Appointed on 4 September 2017

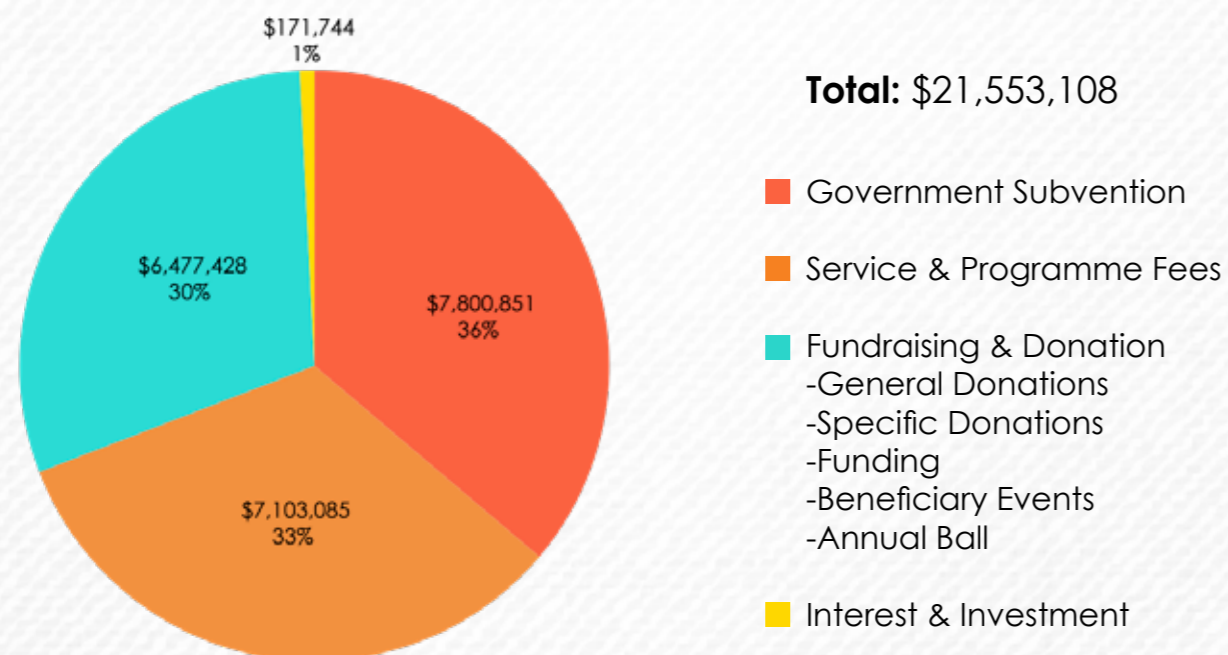
# ORGANISATION STRUCTURE\*



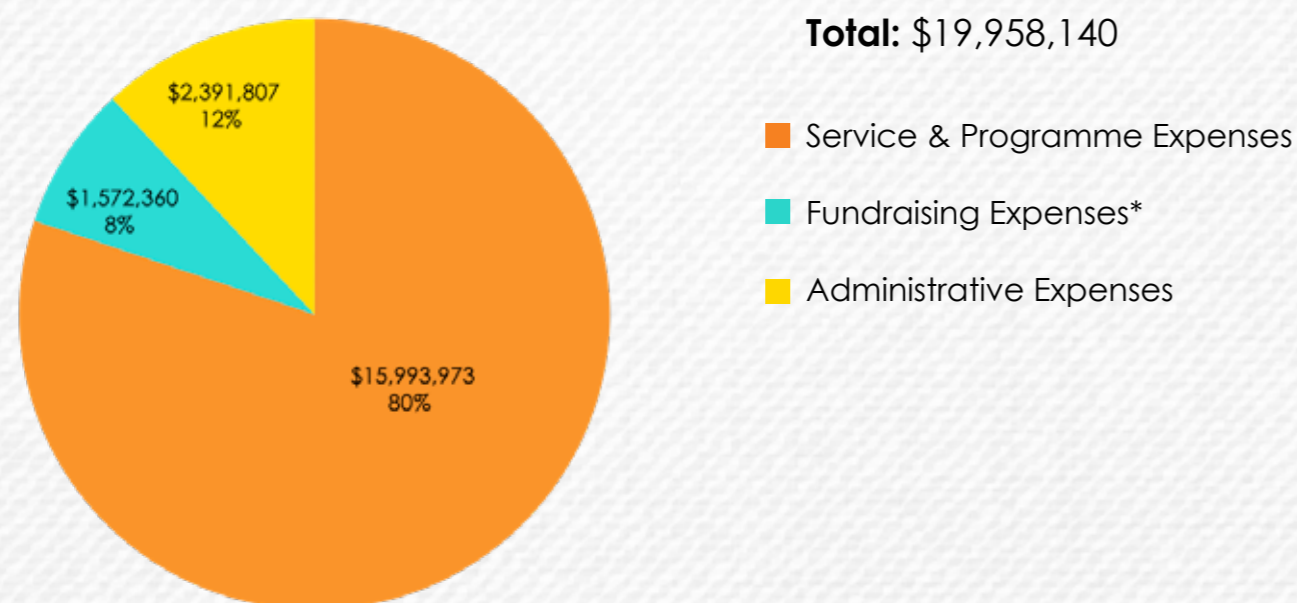
\* Please refer to "Our Team" on our [website](#) for the most updated staff biography and qualifications as of 31st March 2018.

# FINANCIAL HIGHLIGHTS

## ❖ Total Income



## ❖ Total Expenditure



\*Fundraising Expenses labelled as "Advertising and publicity expenses" and "Direct programme expenses" in the Income and Expenditure Account.

[Note1] Annual Financial Report of Lump Sum Grant can be viewed at our [website](#).

[Note2] CDC upholds the practice of utilising the entire sum of the Lump Sum Grant, i.e. the funds allocated to the CDC by the SWD in recognition of our continuing contribution to the social welfare of Hong Kong, in providing professional services at the CDC without holding any reserve.

# HONORARY AUDITOR'S REPORT

## Honorary auditor's report to the members of The Child Development Centre

(Incorporated in Hong Kong and limited by guarantee)

We have audited the financial statements of The Child Development Centre ("the CDC") set out on pages 7 to 35, which comprise the statement of financial position as at 31 March 2018, the statement of comprehensive income, the statement of changes in funds and the cash flow statement for the year then ended and notes to the financial statements, including a summary of significant accounting policies.

### Responsibilities of the Executive Committee for the financial statements

The Executive Committee is responsible for the preparation of the financial statements that give a true and fair view in accordance with HKFRSs issued by the HKICPA and the Hong Kong Companies Ordinance and for such internal control as the Executive Committee determines is necessary to enable the preparation of financial statements that are free from material misstatement, whether due to fraud or error.

### Auditor's responsibilities for the audit of the financial statements

Our objectives are to obtain reasonable assurance about whether the financial statements as a whole are free from material misstatement, whether due to fraud or error, and to issue an auditor's report that includes our opinion. This report is made solely to you, as a body, in accordance with section 405 of the Hong Kong Companies Ordinance, and for no other purpose. We do not assume responsibility towards or accept liability to any other person for the contents of this report.

Reasonable assurance is a high level of assurance, but is not a guarantee that an audit conducted in accordance with HKSAAs will always detect a material misstatement when it exists. Misstatements can arise from fraud or error and are considered material if, individually or in the aggregate, they could reasonably be expected to influence the economic decisions of users taken on the basis of these financial statements.

As part of an audit in accordance with HKSAAs, we exercise professional judgement and maintain professional scepticism throughout the audit. We also:

- Identify and assess the risks of material misstatement of the financial statements, whether due to fraud or error, design and perform audit procedures responsive to those risks, and obtain audit evidence that is sufficient and appropriate to provide a basis for our opinion. The risk of not detecting a material misstatement resulting from fraud is higher than for one resulting from error, as fraud may involve collusion, forgery, intentional omissions, misrepresentations or the override of internal control.
- Obtain an understanding of internal control relevant to the audit in order to design audit procedures that are appropriate in the circumstances but not for the purpose of expressing an opinion on the effectiveness of the CDC's internal control.
- Evaluate the appropriateness of accounting policies used and the reasonableness of accounting estimates and related disclosures made by the Executive Committee.

- Conclude on the appropriateness of the Executive Committee's use of the going concern basis of accounting and, based on the audit evidence obtained, whether a material uncertainty exists related to events or conditions that may cast significant doubt on the CDC's ability to continue as a going concern. If we conclude that a material uncertainty exists, we are required to draw attention in our auditor's report to the related disclosures in the financial statements or, if such disclosures are inadequate, to modify our opinion. Our conclusions are based on the audit evidence obtained up to the date of our auditor's report. However, future events or conditions may cause the CDC to cease to continue as a going concern.
- Evaluate the overall presentation, structure and content of the financial statements, including the disclosures, and whether the financial statements represent the underlying transactions and events in a manner that achieves fair presentation.

We communicate with the Executive Committee regarding, among other matters, the planned scope and timing of the audit and significant audit findings, including any significant deficiencies in internal control that we identify during our audit.

#### Opinion

In our opinion, the financial statements give a true and fair view of the financial position of the CDC as at 31 March 2018 and of its financial performance and its cash flows for the year then ended in accordance with Hong Kong Financial Reporting Standards ("HKFRSs") issued by the Hong Kong Institute of Certified Public Accountants ("HKICPA") and have been properly prepared in compliance with the Hong Kong Companies Ordinance.



Certified Public Accountants  
8th Floor, Prince's Building 10 Chater Road  
Central, Hong Kong

#### Income and Expenditure Account

For the year ended 31 March 2018

(Expressed in Hong Kong Dollars)

	General Fund	Designated Funds	Total
<b>PRINCIPAL SOURCE OF REVENUE</b>	<b>\$</b>	<b>\$</b>	<b>\$</b>
Service fee income	7,103,085	-	7,103,085
Donations received			
- General donations	1,399,285	-	1,399,285
- Specific donations	-	1,155,253	1,155,253
Subvention from Social Welfare Department	-	7,800,851	7,800,851
Income from fund raising activities	3,922,890	-	3,922,890
	<b>\$ 12,425,260</b>	<b>\$ 8,956,104</b>	<b>\$ 21,381,364</b>
<b>OTHER NET INCOME</b>			
Interest income	32,918	-	32,918
Net unrealised exchange gain	4,673	-	4,673
Net gain on investments	76,000	-	76,000
Miscellaneous income	58,153	-	58,153
	<b>\$ 171,744</b>	<b>-</b>	<b>\$ 171,744</b>
<b>EXPENDITURE</b>			
Activities expenses	\$121	\$50,403	\$50,524
Advertising and publicity expenses	39,016	-	39,016
Consultancy fees	570,552	51,945	622,497
Direct fund raising expenses	1,334,195	-	1,334,195
Direct programme expenses	84,590	114,559	199,149
Entertainment	2,480	-	2,480
Fee remission	-	333,430	333,430
Insurance	50,738	-	50,738
Legal and Professional fees	39,855	-	39,855
Miscellaneous expenses	144,586	-	144,586
Office supplies	26,985	-	26,985
Printing, stationery and supplies	68,333	-	68,333
Rent, rates and utilities	1,608,796	353,269	1,962,065
Repairs and maintenance	44,452	21,930	66,382
Staff costs	7,164,263	7,823,259	14,987,522
Telephone, fax and postage	20,631	-	20,631
Travelling	9,752	-	9,752
	<b>\$11,209,345</b>	<b>\$8,748,795</b>	<b>\$19,958,140</b>
<b>Surplus/ (Deficit) for the year</b>	<b>\$ 1,387,659</b>	<b>\$ 207,309</b>	<b>\$ 1,594,968</b>

# ACKNOWLEDGEMENTS

Our warmest thanks to all our supporters who so generously gave their time, effort and gifts to support The Child Development Centre from April 2017 to March 2018. Through your generous contributions, we have been able to continue to deliver our educational services that truly made a difference to the children, youths and their families in our community. Our thanks also go to all those who made anonymous donations.

(In alphabetical order)

## ❖ Corporations

Airplay Blow Dry Bar  
Attire House  
Bank of East Asia  
Baumhaus  
BBG Promotion Limited  
Black Sheep Restaurants  
Bonham Strand Hong Kong Limited  
Bounce Inc  
Branksome Hall Asia  
Buddy Tantino  
Buenos Aires Polo Club  
CÉ LA VI Hong Kong  
China Everbright Limited  
City of Dreams  
Clearwater Bay Equestrian and Education Centre  
Clinique  
CNN Communications  
Columbia International Removals Ltd  
CrossFit Asphodel  
Direct Management Group  
Diversified Global Graphics Group  
Estee Lauder (H.K.) Limited  
Faust International Ltd Hong Kong  
Fish School  
Four Seasons Hotel Hong Kong  
Fresh Start Concepts Limited  
FRITES  
FunRaising Events Asia Limited  
G. & I. Co. Ltd.  
Goldman Sachs (Asia) LLC  
Grand Hyatt Erawan Bangkok  
Grand Hyatt Hong Kong  
Grand Hyatt Melbourne  
HealthMutual Group  
Hong Kong Disneyland Resort  
Island Shangri-La Hong Kong  
Jellybean KIDS Limited  
JIA Group Limited

kikki.K  
KPC Yarn Limited  
KPMG  
LC Surveyors Limited  
LE PAN  
M.A.C  
MaBelle Jewellery Co. Limited  
Marron's International Limited  
Maxx-Marketing Limited  
MBlife  
Melco Resorts & Entertainment  
Mini Mandarins  
Ocean Park Hong Kong  
On The Road Experience  
Oya Clinics  
Park Hyatt Siem Reap  
Powder Room Niseko  
QUO. kefir believers  
Roger Lee Production Limited  
Seedling  
Sift Desserts  
Steam Hair Care  
Studio City  
Swanky Spree  
The Fine Wine Experience  
The Fleming  
The Langham Hong Kong  
The Peninsula Hong Kong  
The Rink, Elements  
Tikitiki Bowling Bar  
Tung Yao Ceramics Design Studio  
UTOPIAN  
Victorinox  
Viola Watches  
Wajima Niseko  
Waterford Wedgwood Hong Kong Limited  
William E. Connor & Associates Limited  
World of Hyatt

## ❖ Community Groups/Associations/ Schools/ Public Bodies

American Women's Association of Hong Kong  
Hong Kong Trade Development Council  
Hong Kong Youth Arts Foundation  
Korean Women's Association of Hong Kong  
Peter Chan Jee Yat Charitable Foundation  
Queen Elizabeth Foundation for the Mentally Handicapped  
Sedan Chair Charities Fund  
The Cecilian Singers  
The Education University of Hong Kong  
The Far East Masonic Association For Charity  
The Hong Kong Council of Social Service  
The Hong Kong Racehorse Owners Association Charitable Foundation Limited  
The Hub Hong Kong Children and Youth Centre  
The Ohel Leah Synagogue Charity  
The Shamdasani Foundation  
The Swire Group Charitable Trust  
The Welfare League Trust  
The William E. Connor Foundation

## ❖ Individuals

Jeffrey Alam  
Yusuf Aireza  
Lea Angelin-Linker  
Alex Au  
Evan Auyang  
Laurence Bailey  
John Ball  
Yvonne Becher  
Tinuade & Anders Bergkvist  
Neelam Bilfinger  
Kiron Bose  
Ann Bridgewater  
Iain Bruce  
Linda Burgoyne  
David Carter  
Melissa Catelli  
Joe Chai  
Charles Chan  
Chuak Chan  
Emma Chan  
Raymond Chan  
Mei Lun Chan  
Monie Chan  
Winnie Chan  
Peter Chan  
Philip K.C. Chan  
Ping Chan  
John Chan  
Yi Kan Chan  
Yin Yu Chan  
Wendy Cham

Jimmy Chang  
Margaret Chang  
Jiya Charnjee  
Jian Hao Chen  
Marco Chen  
Shuang Chen  
Jonathan Cheng  
Michelle Cheng Chan  
Adrian Cheong  
Fook Aun Chew  
Joanne Chin  
Shuk Kuen Ching  
Samuel Chiu  
Jones Chong  
Steven Chong  
Leo Chow  
Paul Chu  
Desmond Chum  
Nicholas Chung  
Anastasia & Damian Chunilal  
Eric Chupin  
Fred Clatworthy  
Perran Coak  
Jason Cohen  
Janet Collier  
Crisel Consunji  
Graham Corner  
Craig Crossman  
Antonio Da Silva  
Daniel Darahem  
Abbi DeLessio

Xiaoli Deng  
Heloise Di Menza Cretot  
Alex Dong  
Greg Donohugh  
Callum Dunn  
Mac El-Omari  
Sofia Fachruddin  
Alison Falloon  
Keith Foley  
Melody Fong  
Frederick Fong  
Adrian Fu  
Frank Fu  
Eugene Fung  
Mary Fung  
Marcia Fung  
Tom Gaffney  
Joseph Gallagher  
Raj Gampa  
Dave Gasper  
Peter Gastreich  
Alice Giles  
Darryl Goveas  
Jun Tsai Hao  
Christopher Hasson  
Kameka Herbst  
Ken Hitchner  
Lawrence Ho  
Mia Ho  
Sabrina Ho  
Vincent Ho



Simon Holt  
Axel Hsu  
Hsiao Ching Huang  
Amy Huges  
Ching Chi Hui  
Grace Hui  
Jackie & John Hui  
Julian Hui  
Justin Hui  
Rosy Hui  
William Hui  
Carl Huttenlocher  
Chris Ip  
Edward Johnson  
Jason Johnson  
Nelson Kan  
Jonathan Kee  
Justin Kent  
Swadiq Khan  
Joshua Kim  
Noah Kim  
Yee Man Ko  
Sven Koehler  
Carina Kong  
Jesscia Kong  
Benedict Ku  
Andy Kwok  
Sean Kwok  
Sylvia Kwok  
Geoffrey Lai  
Leland Lai  
NiQ Lai  
Alain Lam  
Bonnie Lam  
Dorothy Lam  
Douglas Lam  
Kenneth Lam  
Kevin Lam  
Kimmy Lam  
Natty Lam  
Tracy Lam  
Eugene Lau  
Ka Po Lau  
Tanya Lau  
Abigail Lee  
Alexander Lee  
Ambrose Lee  
Cassie Lee  
Dilys Lee  
Edmund Lee  
Edna Lee  
Isaac Lee  
Karol Lee  
Loewe Lee

Roger Lee  
Sonia Lee  
Yin Yin Lee  
Yu Chuan Lee  
Becky Lee  
Ching Him Leung  
Essen Leung  
Kitty Leung  
Kayi Leung  
Kwai Chun Leung  
Roland Leung  
Ying Wai Leung  
Arne Lindman  
Fred Li  
Ka Ka Li  
Julian Liu  
Kevin Liu  
Peter Lo  
Viviane Lok  
James Louey  
David Lu  
Evelyn Lu  
Lambert Lu  
Caesar Luk  
Dick Ma  
Erica Ma  
David MacKenzie  
Gingin Mak  
Ming Chung Mak  
Michael Marquardt  
Amy Mok  
Virginia Morris  
Thomas Morrow  
Horace Mui  
Michelle Mui  
Anthea Murray  
Brian Murray  
Edith Ng  
Fanna Ng  
Ben Ngai  
Patrick O'Neill  
Hin Kwan Pang  
Andrew Parmet  
Thomas Pau  
Antony Phillips  
Oliver Pillgramm  
Daniel Pong  
Dario Pong  
Joe Yau Pong  
Lai Ha Pong  
Paulo Pong  
Charles Pratt  
Geoffrey Prentice  
Richard Price

Rupert Purser  
Kristie Ross  
Tom Royds  
Gaurav Saigal  
Lota Samonte  
Neil Shen  
Paul Shih  
Ludovic Shum  
Adam Singer  
Andrew Sit  
Alfred Siu  
Edmond Siu  
Michael Spangfort  
Peter Spizziri  
William J. Stephens  
George Sun  
Homer Sun  
Jacqueline & Stanley Sun  
Deepak Surtani  
Jeremy Sutch  
Anthony Sutcliffe  
Masahiro Suzuki  
Anthony Sylvester  
Henry Tai  
Julie Tam  
Jason Tan  
Melissa Lynn Tan  
Agus Tandiono  
Leslie Tang  
Simon Tang  
Rebecca Teague  
Andrew Teoh  
Mohit Thakur  
Ronald Tham  
Ernest Tsang  
Michael Tsang  
Newman Tsang  
Sau Ching Tse  
Daniel Tseung  
Caroline Tsui  
Matthew Ul  
Zoltan Varga  
Jason Wallis  
Ka Ming Wan  
An Lei Wang  
Matthew Wardell  
Johnathan White  
Ewen Will  
Virginia Wilson  
Ann Wong  
Chi To Wong  
Chung Sing Wong  
Eric Wong  
Marina Wong

Mark Wong  
Shui Wong  
Arthur Wu  
Mason Wu  
Ronnie Wu  
Phoebe Xie  
Daniel Xu  
Lawrence Yam  
Hubert E. Yang  
Paul Yang  
Nicholas Yeo  
Elizabeth Yetman  
Jason Yeung  
Mei Ching Yeung  
Siu Mei Yeung  
Yewen Ying  
Dorothy Yiu  
Hon Wai Yiu  
Thomas Yiu  
Toby Yonge  
Kaho Yoshikawa  
David Yu  
Gino Yu  
Stephanie Yuen  
Jason Yung  
Adam Zaki  
Jonathan Zeman  
Philip Zhai  
Kevin Zhang  
Tony Zhang  
Yichen Zheng

## THE CHILD DEVELOPMENT CENTRE

 +852 2849 6138

 +852 2849 6900

 [info@cdchk.org](mailto:info@cdchk.org)

 [www.cdchk.org](http://www.cdchk.org)



4th Floor, Prime Mansion, 183-187 Johnston Road, Wan Chai, Hong Kong