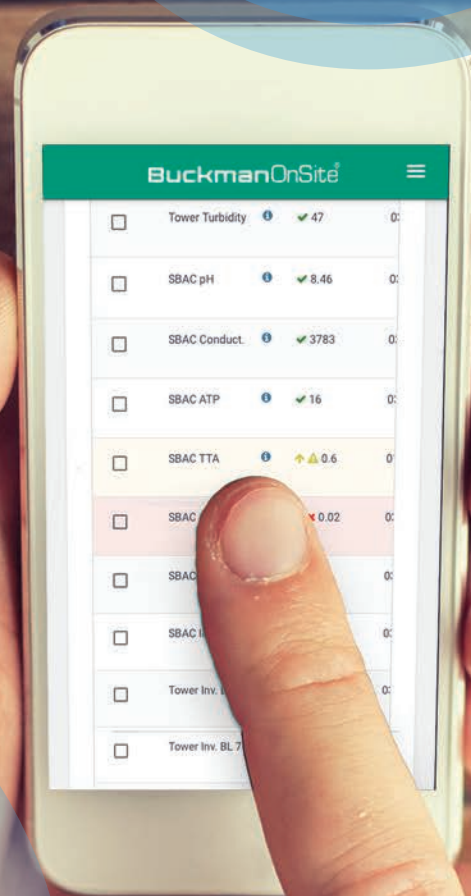


BuckmanOnSite[®]

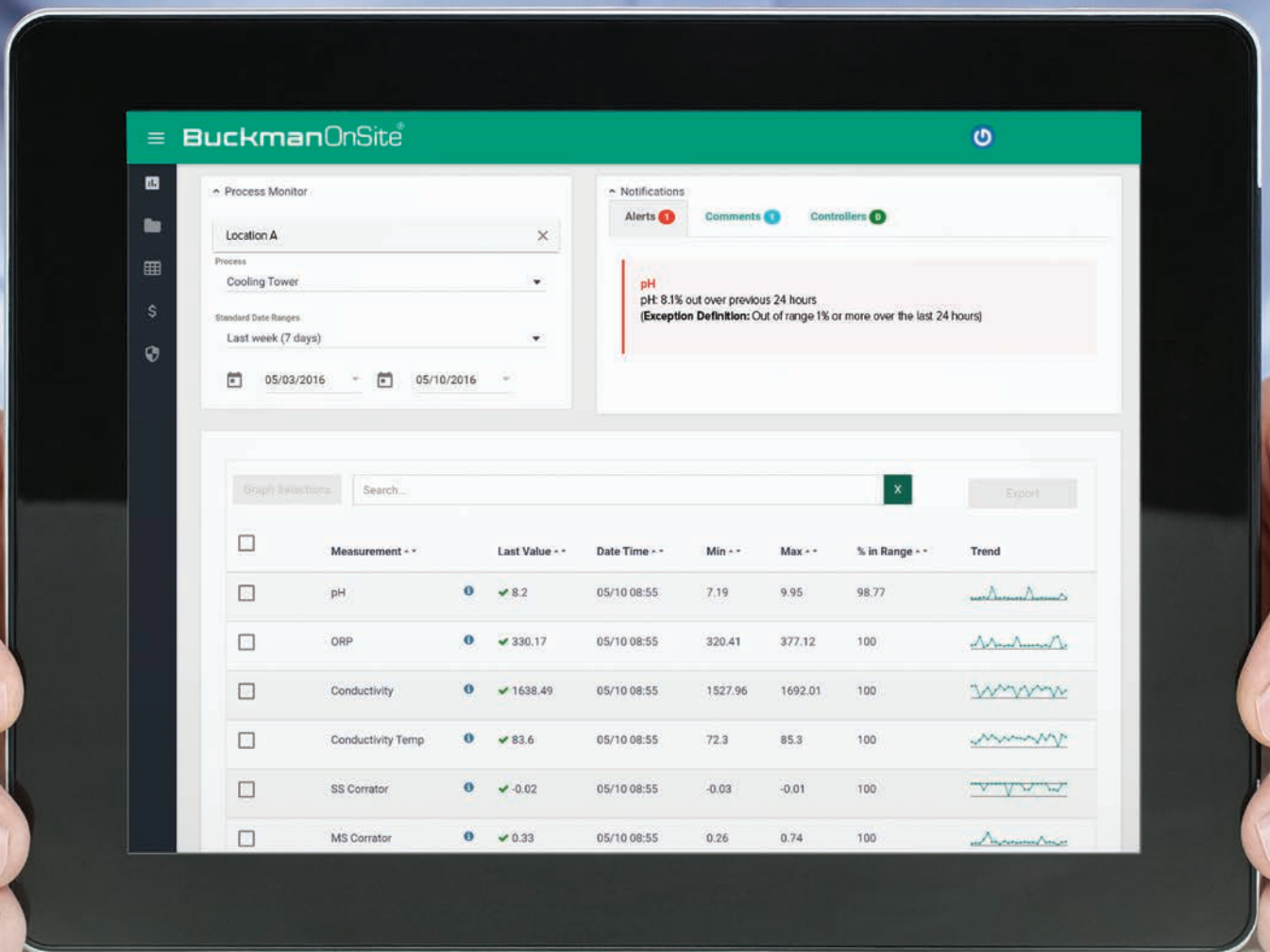
**MORE
POWER
OVER
DATA**



**MORE
CONTROL
OVER
WATER**

PRECISION

VERSATILITY





**IT'S
HERE**

The powerful, all-new
BuckmanOnSite[®]
remote process
monitoring system.

With the latest cloud-based versatility and advanced features, this unique portal and data dashboard interface now offers you unmatched visibility into your process data, so you can have unprecedented power over your processes.

If you are currently a Buckman OnSite user, you'll love how the updated system is loaded with new capabilities to improve every aspect of your process monitoring. If you aren't yet familiar with the Buckman OnSite platform, there's never been a better time to get on board. Buckman OnSite can help you save time, labor, chemicals and money, bringing a higher level of efficiency to your entire operation.



**Easier
Faster
Smarter
BETTER**

Buckman OnSite[®] is ready when you are, making sure vital information flows to everyone who needs it 24 hours a day, seven days a week. The program gives you access to automated control data, manually entered data, safety data sheets and more, so you never have to wait for your representative to compile historical reports. But Buckman Onsite doesn't stop there. It's been designed from the ground up to enlighten and empower you like no other remote monitoring system can.

Easy Access

Buckman OnSite runs on a new cloud-based platform, so it's lightning fast, extremely versatile and secure. It supports seven languages. And it features a new responsive design, which

allows easy viewing and use with a full range of computers and devices, including smart phones and tablets. So process monitoring goes wherever you go.

Superior Process Monitoring

Buckman OnSite is brimming with functionality to help you search data, manage information and discover potential problems early, so you can make adjustments sooner.

Robust Search Functionality

Find desired processes and measurements easily and quickly.

Alert Symbols

Easily detect and identify out-of-spec data.

Export Capability

Quickly export data to a spreadsheet for further analysis.

Comparative Graphing

Select two or more measurements to be simultaneously charted—with a shared axis or a separate axis for each measurement.

Notification Pane

Includes:

- Alerts—Easily see notifications of out-of-spec data.
- Comments—Quickly access process or measurement comments.
- Controllers—Directly access process controllers to make adjustments easily.

Effective Manual Data Management

Buckman OnSite helps you maintain and report on manually collected data and comments. And it makes importing and exporting historical data a snap. Advanced features include:

Comments Box

Make or view process comments, which are automatically propagated to online dashboards and reports.

Versatility and Precision

Measurement data values can be numeric or selected from a list of text values. Plus, numeric readings can be set for up to 10 decimal places.

Easy Importing

Easily import your existing historical data using a spreadsheet template to make transitioning to Buckman OnSite simple and worry-free.

Offline Tracking Capability

Exclude process offline periods to ensure accuracy of data reporting.

5-Day Window

Easily see, enter and compare manual data for five consecutive days.



**AUTOMATED
CONTROL**



CUSTOMIZABLE

Streamlined Document Management

Buckman OnSite[®] empowers your representative to serve you better, with advanced document management capabilities and features that include:

Document Integration

Your Buckman representative can quickly access Buckman Account Management Program documents that pertain to you from within OnSite for a higher level of customer service.

Access to SDSs

Through this document management system, you will have access to the most current Buckman Safety Data Sheets from your computer or mobile device.

User-Friendly Layout

Intuitive folder and document structure works well with both PC and mobile devices.

Easy Folder Search

Quickly search and locate documents within your Buckman Account Management Program root folder and sub folders.

Fast Response Times

Quickly navigate folders and download files.

Advanced Reporting

Buckman OnSite can generate advanced reports that can help make your entire operation more efficient, including:

Scorecard

Get a summary of defined critical measurements enabling you to compare the current week to the previous week.

Inventory Tracking

You and your representative can track product inventory at your site to calculate usage, days of supply and current inventory levels.

Compliance

Take advantage of compliance monitoring across critical diagnostic and control measurements.

Exception Reports

These reports notify you of alert conditions. You and/or your sales representative can configure which measurements to include on the report and define the conditions that trigger an alert. The reports can be emailed to you on a predefined schedule and as frequently as every hour.

Summary Reports

These provide a customizable overview of your processes and measurements, with supporting line graphs and data points. Reports can be emailed to recipients on a predefined schedule.

Feb 07, 2016 - Feb 13, 2016	Feb 14, 2016 - Feb 20, 2016	Measurement	Target	Actual	Variance	Min. Value	Max. Value
Cooling Tower							
		Boiler Polymer (1.50 - 1.80 -)	100.00%	100.00%	0.00%	1.66	1.74
		Condensate pH (8.20 - 8.80 -)	90.00%	83.33%	-6.67%	7.50	8.75
		BLR Cond-Controller (2200.00 - 2600.00 µS)	90.00%	96.88%	6.88%	2149.17	3730.89
		CT ORP-Controller (350.00 - 450.00 mV)	100.00%	24.19%	-75.81%	200.54	401.65
		Feedwater Cond (0.00 - 80.00 mmhos)	100.00%	100.00%	0.00%	24.40	38.80
		CT pH-Lab (8.20 - 8.60 -)	100.00%	100.00%	0.00%	8.25	8.46

Control Parameters									
Parameter Information		Current Control			Compliance Over Reporting Period				
Measurement	Unit	Latest Reading	Normal Range	Average	Compliance	Action Level 1	Action Level 2	Action Level 3	
SBAC TTA	ppm	0.60 - 01/18/2016	0.40 - 0.60	0.40	0.00%	100.00%	100.00%	0.00%	
SBAC Chlorine Free	ppm	0.02 - 03/14/2016	0.20 - 0.80	0.06	0.00%	100.00%	13.23%	86.77%	
Tower Turbidity	NTU	47.00 - 03/22/2016	10.00 - 50.00	63.61	2.59%	97.41%	93.54%	3.86%	
Makeup Turbidity	NTU	5.30 - 03/22/2016	-0.10 - 5.00	6.12	6.50%	93.50%	93.50%	0.00%	
Tower Chlorine Free	ppm	0.33 - 03/22/2016	0.20 - 0.60	0.83	16.52%	83.48%	63.88%	19.60%	
Makeup Cl Free	ppm	0.01 - 03/22/2016	0.10 - 1.00	0.62	60.38%	39.62%	32.96%	6.67%	
Tower Calcium	ppm	1488.00 - 03/22/2016	800.00 - 2000.00	1460.17	90.02%	9.98%	7.33%	2.65%	
Tower Total Hard.	ppm	5800.00 - 03/22/2016	3000.00 - 7000.00	5538.33	91.03%	8.97%	8.97%	0.00%	
Tower Conduct.	mmhos	30260.00 - 03/22/2016	20000.00 - 36000.00	28770.00	93.47%	6.53%	6.53%	0.00%	
Tower Alkalinity	ppm	86.00 - 03/22/2016	50.00 - 120.00	101.83	97.44%	2.56%	2.56%	0.00%	
Tower pH	pH	7.70 - 03/22/2016	7.79 - 8.21	7.86	97.46%	2.54%	2.54%	0.00%	
CWT ATP	RLU	3.00 - 03/22/2016	-0.10 - 10.00	3.38	98.55%	1.45%	1.45%	0.00%	
Tower Mg	ppm	507.00 - 03/22/2016	100.00 - 700.00	412.43	100.00%	0.00%	0.00%	0.00%	
SBAC ATP	RLU	16.00 - 03/14/2016	0.00 - 50.00	11.06	100.00%	0.00%	0.00%	0.00%	

Diagnostic Parameters									
Parameter Information		Current Control			Over Reporting Period				
Measurement	Unit	Latest Reading	Normal Range	Average					
SBAC Conduct.	mmhos	3783.00 - 03/14/2016	3000.00 - 4000.00	3620.29					
Makeup Mg	ppm	68.30 - 03/22/2016	25.00 - 200.00	42.93					
Makeup Total Hard.	ppm	700.00 - 03/22/2016	600.00 - 1000.00	673.75					
SBAC pH	pH	8.46 - 03/14/2016	7.50 - 9.00	8.40					

	Last Reading	Average	Standard Deviation	Minimum Value	Maximum Value	Lower Limit	Upper Limit	Count Above	Count Below	% In
Water System										
CT Cond-Controller	1811.25 µS	1825.74	17.04	1788.61	1860.81	1600.00	2000.00	0	0	100.00%
CT pH-Controller	8.29 pH	8.40	0.04	8.23	8.46	8.20	8.60	0	0	100.00%
CT ORP-Controller	332.18 mV	273.73	31.61	231.33	335.61	350.00	450.00	0	136	0.00%
BLR Cond-Controller	2524.25 µS	2461.71	270.80	2176.54	4633.90	2200.00	2600.00	4	2	95.60%
CT Cond-Lab	1831.00 mmhos	1831.00		1831.00	1831.00	1600.00	2000.00	0	0	100.00%
CT Cond-Trackster	1834.00 mmhos	1834.00		1834.00	1834.00	1600.00	2000.00	0	0	100.00%
CT pH-Lab	8.46 -	8.46		8.46	8.46	8.20	8.60	0	0	100.00%
CT pH-Trackster	8.43 -	8.43		8.43	8.43	8.20	8.60	0	0	100.00%
CT Polymer	0.57 -	0.57		0.57	0.57	1.00		0	0	100.00%
CT Phosphonate	No Data									
CT Alkalinity	236.00 ppm	236.00		236.00	236.00	150.00	350.00	0	0	100.00%
CT Total Hard	912.00 ppm	912.00		912.00	912.00	0.00	1000.00	0	0	100.00%
CT Calcium Hard	No Data									
CT Free Chlorine	0.65 ppm	0.65		0.65	0.65	0.20	0.50	1	0	90.00%
Boiler Cond-Lab	2455.00 mmhos	2455.00		2455.00	2455.00	2200.00	2600.00	0	0	100.00%
Boiler Cond-Trackste	2423.00 mmhos	2423.00		2423.00	2423.00	2200.00	2600.00	0	0	100.00%
Boiler Sulfite	51.60 ppm	51.60		51.60	51.60	30.00	60.00	0	0	100.00%
Boiler Polymer	1.66 -	1.66		1.66	1.66	1.50	1.80	0	0	100.00%
Boiler Alkalinity	444.00 ppm	444.00		444.00	444.00	300.00	700.00	0	0	100.00%
Feedwater pH	9.52 -	9.52		9.52	9.52	8.20	9.90	0	0	100.00%
Feedwater Cond	27.10 mmhos	27.10		27.10	27.10	0.00	80.00	0	0	100.00%
Feedwater Hard	0.00 ppm	0.00		0.00	0.00		0.50			
Condensate pH	8.48 -	8.48		8.48	8.48	8.20	8.80	0	0	100.00%
Condensate Cond	8.30 mmhos	8.30		8.30	8.30	0.00	50.00	0	0	100.00%
Condensate Hard	0.00 ppm	0.00		0.00	0.00		0.50			

REMOTE MONITORING

BuckmanOnSite[®]

Evolutionary Design

Buckman OnSite isn't just designed to be the most advanced remote process monitoring system available; it's designed to stay that way. Built-in versatility allows Buckman to add new

features and capabilities on an ongoing basis, so it'll be on the cutting edge for years to come. And so will you.

Monitor, manage and report like never before.

To learn more about Buckman OnSite, contact your Buckman representative or visit buckman.com. Start taking advantage of the remote process monitoring system that's easier, faster, smarter—better!



This is not an offer for sale. The product shown in this literature may not be available for sale and/or available in all geographies where Buckman is represented. The claims made may not have been approved for use in all countries. Buckman assumes no obligation or liability for the information. Please contact your Buckman sales representative for more information.

Seller warrants that this product conforms to its chemical description and is reasonably fit for the purpose referred to in the directions for use when used in accordance with the directions under normal conditions. Buyer assumes the risk of any use contrary to such directions. Seller makes no other warranty or representation of any kind, express or implied, concerning the product, including **NO IMPLIED WARRANTY OF MERCHANTABILITY OR FITNESS OF THE GOODS FOR ANY OTHER PARTICULAR PURPOSE**. No such warranties shall be implied by law and no agent of seller is authorized to alter this warranty in any way except in writing with a specific reference to this warranty. W997H (12/18)

Argentina +54 11 4701-6415; Australia +61 (2) 6923 5888; Belgium +32 9 257 92 11; Brasil +55 (19) 3864-5000; Chile +56-2) 2946-1000; China +86-21) 4921-0188; India +91) 44-2648 0220
Indonesia +(62) 21-2988 8288; Japan +(81) 3 6202 1515; Korea +(82) 31-416 8991; Mexico +52 (777) 329 3740; Singapore +(65) 6891 9200; South Africa +27 (31) 736 8800; United States +1 (901) 278-0330

Global Headquarters at 1256 N. McLean Blvd., Memphis, TN 38108, USA

Join the conversation!    

© 2018 Buckman Laboratories International, Inc. All rights reserved.

buckman.com