



*inspiration*



All our  
*dreams*

can come true,  
if we have the  
courage to  
pursue them.

WALT DISNEY

A spa naturally provides a spiritual inner sanctum for any lifestyle. Be inspired in your architecture and interior design for this special space by Dröm - sauna, steam room and spa creators.

At Dröm we specialise in conceiving and constructing a bespoke and unique sanctuary to suit each individual home, hotel or health club we are invited to contribute to. Consulting with you and your clients - taking your vision and manifesting a reality beyond your imaginations.

Where do your spa dreams take you? For him it may be a contemplative cave, a place to think. For her perhaps a retreat, a place to indulge. Or together a sensuous space to share. For families it's often a time and zone to connect. For all it is a place of wellbeing.

Creating a dream sauna, steam room or spa concept will include a blending of shape and form, colour and texture, art and ornament. Building it will involve specifying heating and lighting, fittings and fixtures, control functions and

technology. Managing the processes will require specialist knowledge, skills and experience. At Dröm our integrated team of interior architects, artisans, craftsmen, engineers and surveyors will combine disciplines to provide a joined up design and technological solution. Attending to every detail just for you.

### **Your inspiration?**

It might be a shell from the beach, the precious stones from a favourite piece of jewellery, a pottery tile from an Arabian mosque or the shimmering colours of the Northern Lights. Why not browse the following pages in our book for more ideas.





Dröm has evolved over ten years into the bespoke sauna, steam room and spa designer we are today. **Our values** have remained the same throughout and most of our clients have worked with us on numerous projects. They have simply discovered that our unique combination of **creativity, quality, project management** and **attention to detail** is difficult to find anywhere else. Our partnering approach, team communications, can do attitude and management pro-activity ensures that everyone involved is always working together towards a single joined up solution.





## Creativity

Dröm is an innovator and style leader in sauna, steam room and spa design. Our inspiration comes from the world around us and we apply a creative approach to our project concepts that others can only copy. The sincerest form of flattery.

## Quality

Dröm provide quality in design and build and specify only the installation of systems and components from leading brands of products. Fixtures, fittings and accessories too are sourced from the best quality and design led trusted manufacturers.

## Project management

Once the concept and specification is approved, the planning can be a multi-disciplined project requiring a high level of co-ordination of different works. A construction schedule is then agreed and adhered to, and disturbance to everyday life of any residents will be guaranteed to be kept to a considerate minimum. Bringing the project to a more than satisfactory completion on time and to budget.

## Attention to detail

This is where Dröm is set apart. Our 'point of difference' if you like. Our skilled and experienced team of specialists take pride in surpassing expectations. We know that this is what we are known for and with every new project we surprise and delight our partners and their clients. You can buy a sauna or steam room off the peg. But for a tailored fit trust Dröm. Invest in a signature Dröm designed sauna or steam room.





*Inspiration*



Do you have a preconceived idea of what a sauna, steam room or spa should, or has to, look like? Prepare to be enlightened and have the rule book thrown out as a visit to the Dröm showroom will show you that anything in the world can inspire a spa.

Dröm takes inspiration from everywhere: biomes and botany, crystal and glass, art and crafts, architecture and engineering, markets and bazaars, fabrics and fashion, flora and fauna, mechanisms and machines, food and flavour, colour and spice, dance and theatre, circus and carnival, metals and alchemy, rocks and minerals, shells and coral, space and time, sci-fi and futurology.



We will show you a series of concepts that could include just what you have envisioned, or maybe ignite a spark of an idea that we can create, design and build with you.

This therapeutic temple of any home can be the centre of attention - a style statement or a subtle blend of shape and form reflecting the rest of your property's interior scheme. Adding an aesthetically beautiful place of wellbeing, restoration of energy and reinvigoration. A calmer panorama.

For a resort, hotel, club or spa we can create a truly special space that will raise the brand experience of your guests way beyond the ordinary. An exclusive Dröm design will become a must see landmark attracting visitors and interest from far and wide.

As you look around the showroom, you may be compelled to reach out and touch the shapes and textures around you and take on the creative ideas by the number. You may catch a spontaneous smile as you see your reflection in the glass, chrome, mirror or gold leaf. Happiness is a Dröm creation.





*Tile studio*  
Boutique Collection







The Dröm design team spend time each year scouring the ranges of the world's tile manufacturers and artisan designers. This enables us to put together a seasonal collection of tiles to help you choose a creative scheme that perfectly complements your sauna, steam room or spa design theme.

Mosaic tessellations, limited edition tile creations and special grout formulae all come together resulting in the composition of a truly unique tile tableau. These assemblages, comprising different tile types and textures in a palette of colours contribute to giving each tiling project the individual personality to match the structural design.





# Showroom

Introducing a gallery of Dröm sauna, steam room and spa concept designs. Here you will experience inspirational themes from the traditional ornament and colour of the Moroccan souk to the contemporary stylish minimalism of Scandinavian design. Wander through the following showcase pages zone by zone or book a private view. Your journey of discovery starts here.









## Bella Steam Room

This classical and opulent sanctuary with an architect-designed lancet vaulted ceiling features magical twinkling starry sky fibre optic lights and is finished in a traditional Moroccan plaster called Tadelakt. There are two free-standing Carrara Gioia marble benches, hand crafted to a bespoke design with Carrara Bianco marble flooring. The mythology inspired mosaic portrait of a bathing woman is a special commission assembled carefully by hand. It is illuminated by two surface mounted adjustable LED spotlights.







The future belongs to those who  
believe in the *Beauty*  
of their dreams ELEANOR ROOSEVELT



## Globen Steam or Ice Room

The signature Globen Room is a unique Dröm-designed circular structure encased in iridescent glass tiles. Inside, the curved walls and benches are draped with a beautiful mix of gold and green glass mosaic tiles. This steam or ice room shimmers with a constellation of crystal lenses on the fibre optic lights. A central feature downlighter illuminates the glass and mirror shards embedded in the resin floor. A kneipp hose or ice chute allows the bather to wash or cool down during their experience. The frosted glass door gives extra privacy to this ice grotto or steam room.


To love beauty  
is to see

*light*  
VICTOR HUGO









## **Kelo Sauna Room**

At Dröm we are proud to offer you a sauna made from one of the most exclusive sauna timbers available. Fabricated from 80-100 year old dead standing pines from Finland, this sauna is rustic and decadent. Utilising the sawn edge and the wane, this sauna is rich in natural beauty. The three level benches are made from luxury Aspen timber. A rustic Quartzite feature wall is set behind the ultimately traditional wood-burning sauna stove to complete this authentic Scandinavian bathing experience.





Go confidently  
in the *direction*  
of your dreams. Live the life you  
have imagined. HENRY DAVID THOREAU





*Inspiration*  
and genius-one and the same.  
**Victor Hugo**

## **Fiore Rosa Steam Room**

An idyllic steam room created using a hybrid of fabulous floral patterned Bisazza mosaic tiles to the walls and the simplistic elegance of pure white Corian to the cantilever benches and ceiling. Fibre optic lights with crystal lenses give depth to the pyramidal ceiling and under bench LED strip lights emit a gentle glow beneath. A palette of pink shades for the mosaic tiled floor and the bespoke frameless glass door, using ultra clear glass, completes this room to a delicately beautiful perfection.









The *greatest*  
wealth is health.  
Virgil

## Okume Steam Shower

The ultimate space to travel away from the stresses of the 21st Century. This exquisitely tailored steam shower concept is fully adorned with decadent bronze Bisazza mosaic tiles. This creative continuity provides a seamless finish to the walls, benches and ceiling. The integration of fibre optic lighting complements the warm mood and the timber shower column and head and frameless glass frontage complete this ultra indulgent fantasy steam shower.









## Refresh Area

Our coastline inspired refresh area includes the following ideas to help reinvigorate and cool down both during and after your sauna or steam bathing experience.

- Timber drench bucket
- Timber plunge pool made in Kambala wood with removable ladder
- Ice machine and chute

The design also includes a laminated glass shower screen incorporating real Dune grass, along with a Mercury polished natural stone shower tray and a Vulcan Apollo natural stone basin below the ice chute.





The *idea* is there, locked inside, and all you have to do is remove the excess stone.

MICHELANGELO





‘Keep your dreams alive. Understand to achieve anything requires faith and belief in yourself, vision, hard work, determination and dedication. Remember, all things are possible for those who believe’

**GAIL DEVERS  
THREE TIME OLYMPIC  
GOLD MEDALLIST**











# Private Residence, Kensington

## Client

Ampersand Homes

## Project

Sauna and steam room in residential house  
subterranean leisure complex

## Theme

Classical, Impressive, Rich, Vibrant and Glorious

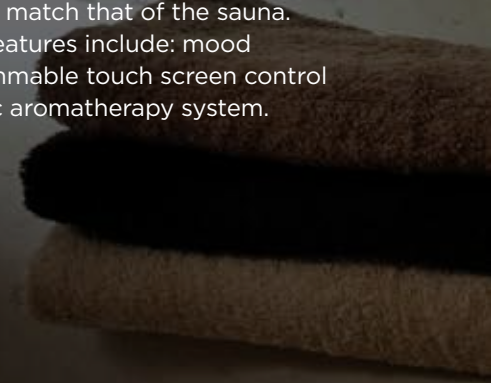
## Description

Dröm was recommended to Ampersand Homes, a developer of some of the finest homes in London, by the project architect. We worked very closely with the Ampersand team to establish the design brief and the Mechanical and Electrical (M&E) specification for the project. We then created the concept for the striking pair of spaces you see illustrated here, as well as providing detailed construction drawings. Upon approval of the designs we then completed the project management, supply and installation of all the build and fit-out elements to the exceptionally high levels of finish required for this discerning private client.

The bespoke sauna and steam room designed by Dröm form part of an extensive leisure complex, which also includes a 25m swimming pool and plunge pool on the lower ground floor of the 20,000 sq ft property.

The sauna features a professional chrome Tylo Mega sauna heater and is entered through a frameless glass door. Solid aspen wood panelling was specified to clad the walls while the benches are made of thin aspen slats. Elegant 'gooseneck' lights are provided for reading while backrest lighting sets the mood for relaxation.

The adjacent steam room features another striking frameless glass door to match that of the sauna. Other state of the art features include: mood lighting, a fully programmable touch screen control panel and an automatic aromatherapy system.

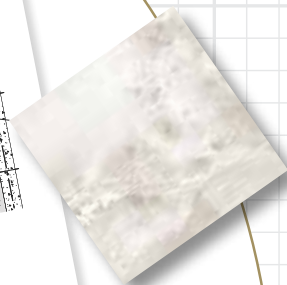
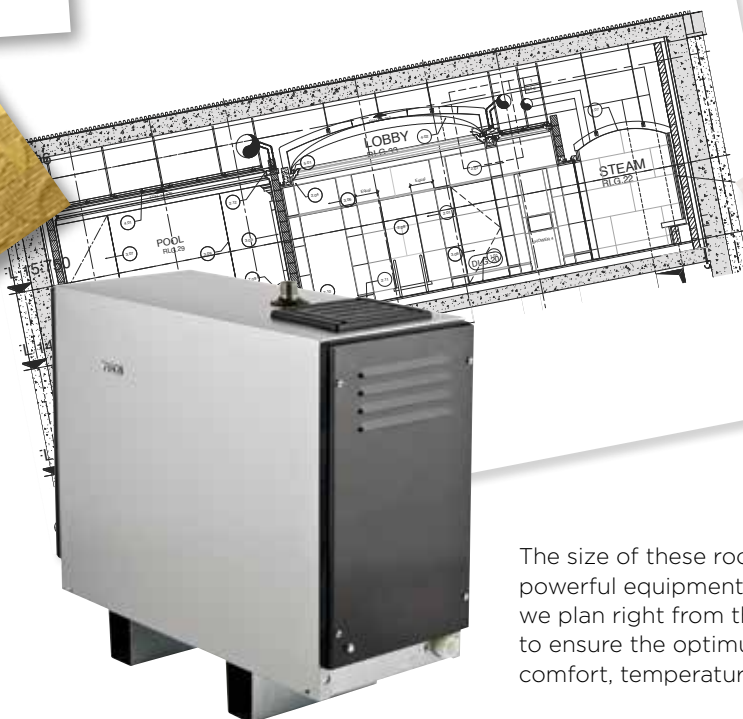






1

Our client loves to read. And that means literally everywhere. So we included reading lights in this first edition design solution.



4

The free flowing structure of this room was inspired from the architectural heritage and grandeur of this fabulous residence.

2

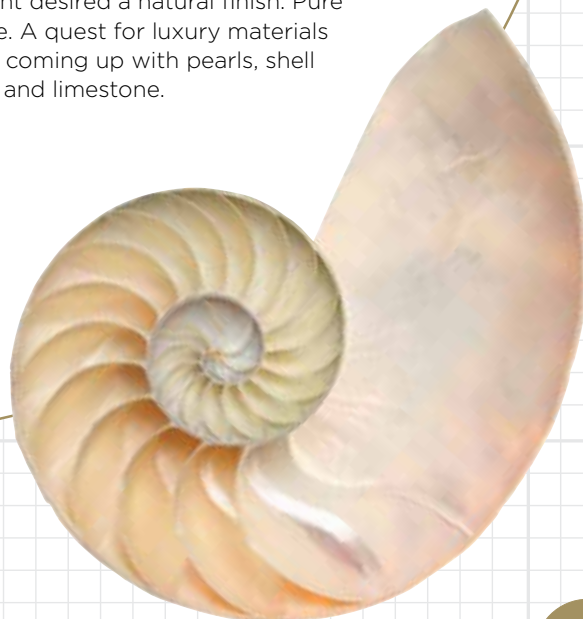
The size of these rooms require powerful equipment, that's why we plan right from the beginning to ensure the optimum level of comfort, temperature and humidity.

# Glorious

Our client desired a natural finish. Pure & simple. A quest for luxury materials ensued, coming up with pearls, shell lighting and limestone.



3





## Specification

### Sauna

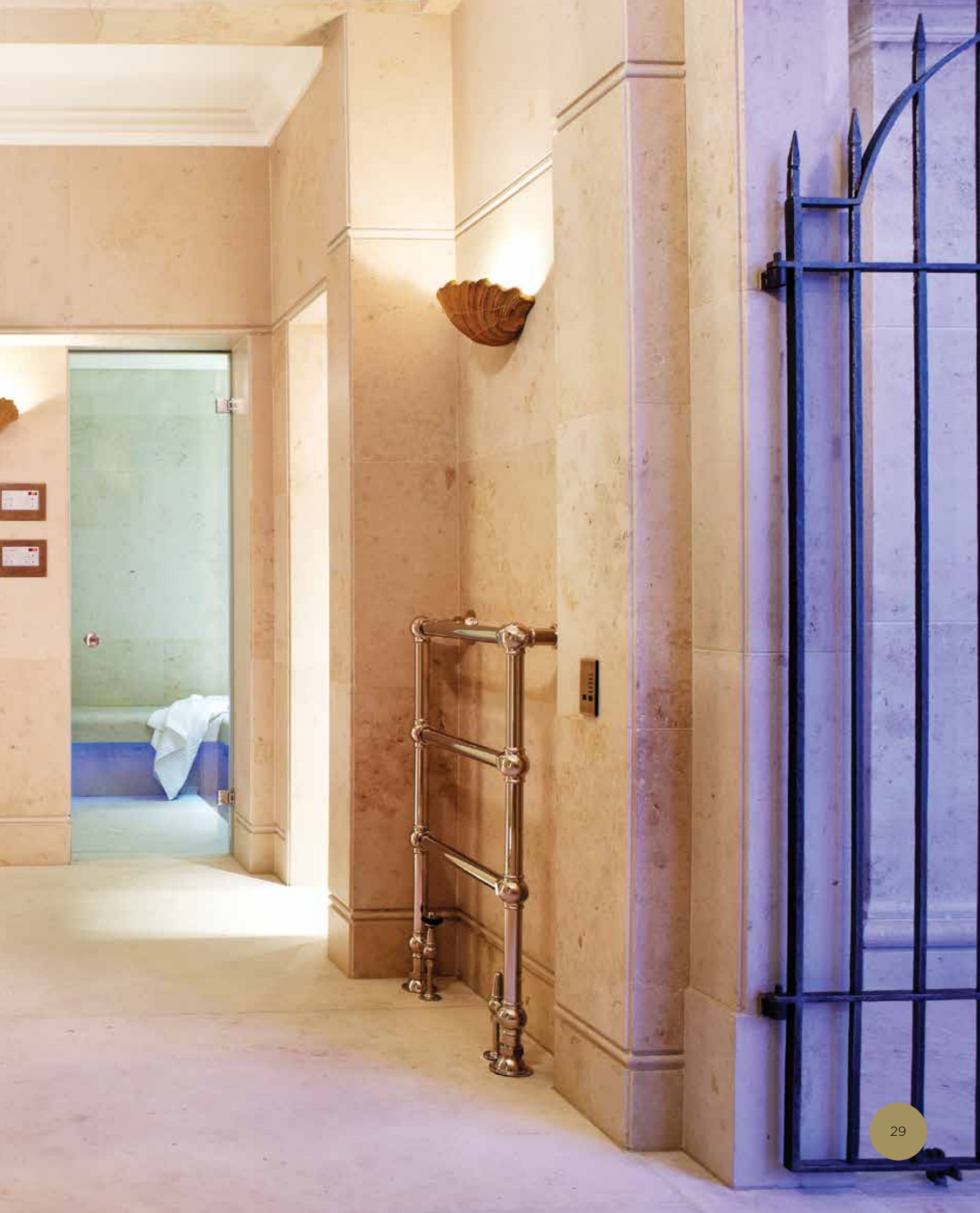
- Aspen wood walls and ceiling
- Aspen wood interior
- Frameless glass door
- Circular, floor mounted chrome 10kw sauna heater
- Digital control panel with decorative cover plate
- Low voltage lighting strips
- Goose neck reading lights
- A selection of aluminium accessories with details in blonde wood

### Steam room

- Luxury limestone finish to walls and benches
- 9VA steam generator
- Digital control panel with decorative cover plate
- Multiple tail fibre optic lighting with stainless steel lenses
- Under bench LED mood lighting
- Frameless glass door
- Polished chrome steam head
- Automatic fragrance dispenser with digital control panel











# Private residence, Surrey

## Client

Octagon Developments

## Project

Sauna and steam room in luxury six bedroom mansion

## Theme

Intriguing, Unusual, Innovative, Mysterious, Eye Catching and Grand

## Description

Dröm has worked with Octagon Developments on many previous projects and we have developed a strong and trusted relationship. However, this new build luxury property in Surrey was among the largest and most prestigious and required a sauna and steam room design that would be truly inspiring.

We worked with the Octagon team led by their development surveyor to provide the inspiration for a unique and beautiful sauna and steam room.

Dröm undertook all aspects of the design and installation work, including the production of detailed designs and CGI images so each detail was exactly right. Tile choices were made hand in hand with Octagon's interior designer while the technical specification was agreed with the project's Mechanical and Electrical (M&E) engineers.

The sauna room has a full glass frontage and bespoke benches made from aspen timber with dark Espresso Ash inlays. A fibre optic lighting feature illuminates the ceiling while more concealed mood lighting is located behind the backrests.

In the steam room, fibre optic lighting is again used - this time to suggest a twinkling starry sky. Here the benches are once again custom designed and fabricated. A vaulted ceiling and mother of pearl mosaic tiling adds further glamour to the luxurious interior and a large window overlooks the adjacent swimming pool.





1



Dazzling blue vintage sapphires reflected the light like the sparkling setting sun on the ripples of an ocean. We simply had to bring this project to life in the same way with our lighting and fittings.

To get the sauna bathing just right, we ensure the room has the correct tools to achieve the precise humidity and temperature.

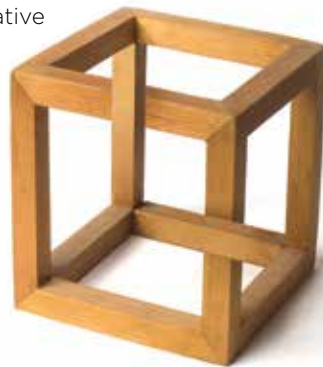
4

2

# MYSTERIOUS

We worked together to create a mood board of colours and textures for this design. This inherited, hide covered, dining chair and Finnish child's wooden puzzle were both chosen as part of the creative process.

The client's dream of a contemporary interior space inspired by the beauty of these translucent sea creatures was developed and incorporated into our design through the use of a vast expanse of glass.



3











## Specification

### Sauna

- Walls and ceiling in Aspen wood
- Bespoke benches and backrests in Aspen wood with Espresso Ash wood inlays
- 15kw floor mounted sauna heater
- Digital, touch screen control panel and relay box
- Fibre optic feature lighting to ceiling
- Low voltage backrest lighting
- Bronze tinted frameless glass door and screens

### Steam room

- Custom made benches
- Luxurious Mother of Pearl mosaic tiles
- 9VA steam generator
- Digital, touch screen control panel
- Automatic water decalcifier
- Colour changing fibre optic ceiling lighting
- Feature LED bench lighting
- Chrome steam outlet
- Bronze tinted frameless glass door and screens
- Large feature window overlooking the pool area



# Private residence with pool house, Windsor

---

## Client

Danesfield Homes

## Project

Sauna and steam room in private residence with pool house

## Theme

Minimalistic, Contemporary, Light, Spacious and Clean

## Description

Danesfield Homes is committed to building stunning new homes with the latest in interior innovations. We have worked with this inspiring client for over seven years now. Once again Dröm has designed, supplied and installed a unique statement sauna and steam room for a prestigious Danesfield project. This time for an amazing 13,000 sq ft home adjacent to Windsor Great Park, also known as the Queen's Garden, at Englefield Green, Surrey.

At this property the sauna and steam room are located within the pool hall next to the house. They were designed with frameless glass doors and full glass frontages as they both overlook the pool and whirlpool areas. This also provides a relaxing vista across the four acres of private gardens beyond.

We worked closely with our clients at Danesfield Homes to develop the sauna and steam room concept and theme - always undertaking to choose appropriate interior finishes to complement the pool house architecture. The fit-out on site was undertaken by our own team of installers and the high quality finish required was completed on time and within budget.

The sauna is lined with narrow profile aspen slats. The same timber forms the high and low level benches together with the backrests which incorporate low voltage lighting. Both the attractive Tylo EP100 heater and the lighting are digitally controlled.

Within the steam room, large format porcelain tiles line the walls and ceiling while Crema Marfil tumbled mosaic provides a stylish finish to the benches. With two steam outlets and LED lighting in the ceiling, digital control systems allow adjustment of the steam and lighting settings.





4

This client was looking for a beautiful, elegant and perfect addition to their home. Our inspiration came from looking at the simplistic beauty of an orchid.



1



In drawing inspiration for this scheme our design team was influenced by the slinky steel lines of this retro armchair.



2

# Contemporary

The glazing in this project had to be stunning, frameless and flawless - like a goldfish bowl. A perfectly constructed spherical space.



Our ideas for this project drew on the nature and attributes of bamboo. A very strong yet light natural material that grows with a pronounced linear direction and is often used for carrying water.

3





## Specification

### Sauna

- Aspen wood walls and interior
- Chrome floor mounted sauna heater
- Digital, touch screen control panel and relay box
- Low voltage backrest lighting
- Low iron frameless glass door and full glass frontage overlooking pool area
- A selection of aluminium accessories with details in blonde wood

### Steam room

- 9VA steam generator
- Digital, touch screen control panel
- Two chrome steam outlets
- Automatic water decalcifier
- Custom made contoured benches
- Crema marfil marble mosaic tiles on the benches
- Large format porcelain tiles on the walls and ceiling
- LED ceiling lighting
- Low iron frameless glass door and full glass frontage









## After sales care

Inspiration and installation is followed by reassurance and peace of mind. All Dröm projects and products are covered by a comprehensive guarantee and extended service plans are available. We will provide ongoing specialist support for you. Keeping your dream alive and well.

Dröm partner with architects, interior designers, developers and home owners and together we create stunning saunas, steam rooms or spas. What could we make together?

This is the end of our book. But it's not the end of the story. In fact it's just the beginning.

[www.dromuk.com](http://www.dromuk.com)





A hand is holding a white heart-shaped paper cutout against a dark, textured background. The heart is positioned on the left side of the frame, and the hand is visible at the bottom, gripping the bottom edge of the heart. The lighting is soft, highlighting the texture of the paper and the skin of the hand.

# *Passion*

is energy,  
Energy is life,  
Life is for living

KICKI CARLSSON-BOYD



[www.dromuk.com](http://www.dromuk.com)

**drömm**<sup>®</sup>  
sauna steam spa



Dröm UK Limited, Dröm House, Abbot Close, Byfleet, Surrey, KT14 7JN, U.K.  
T: +44 (0)1932 355 655 E: [info@dromuk.com](mailto:info@dromuk.com)