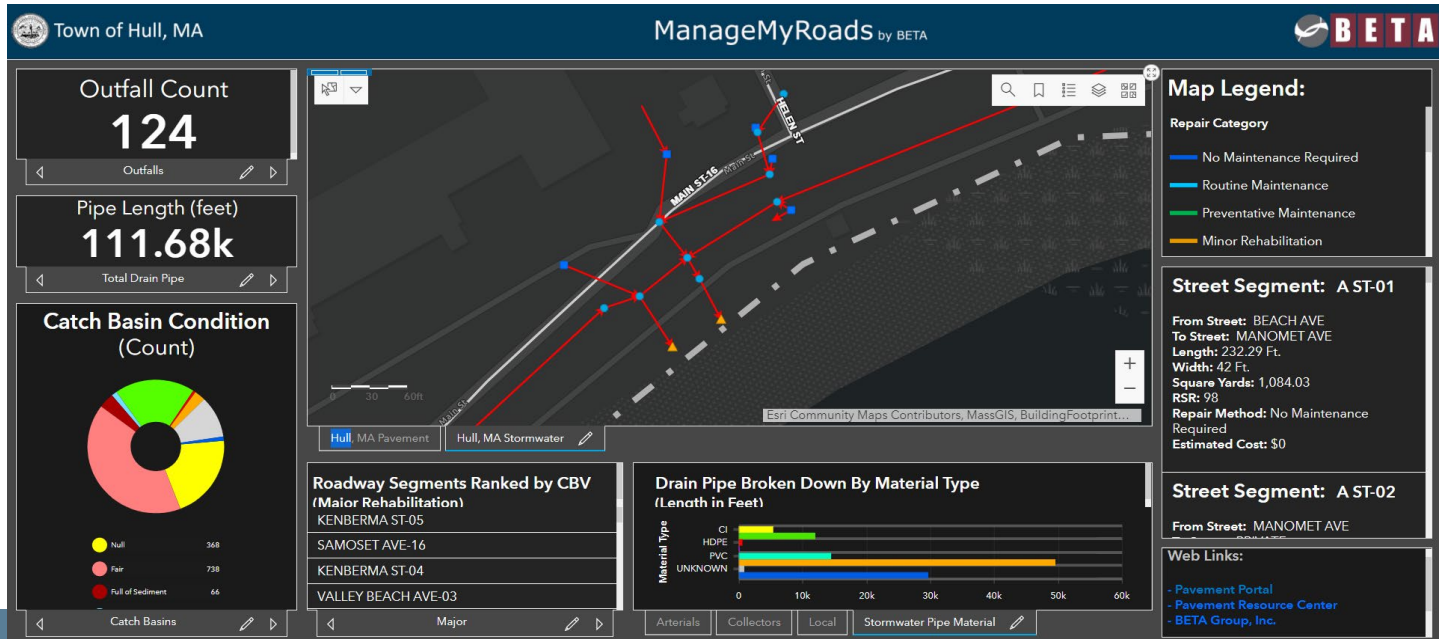




Stormwater Inventory



Stormwater Inventory Services



BETA uses the latest GIS technology to capture stormwater inventory data. Field applications include:

- Arc Collector
- Survey123
- ArcGIS Online (Desktop)
- ArcMap (Desktop)

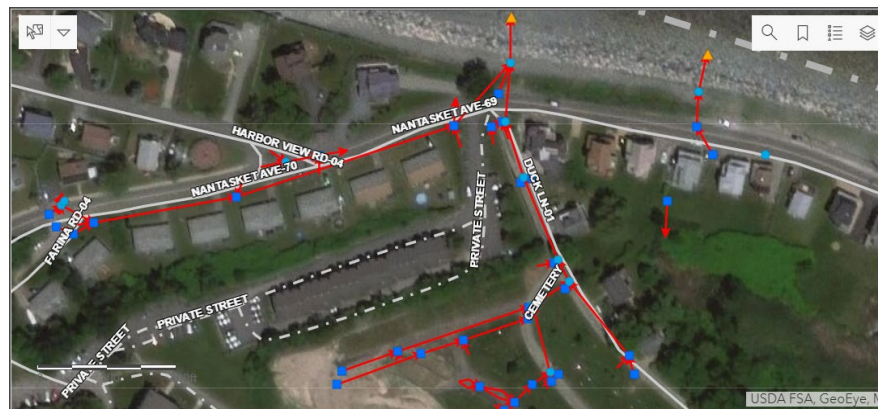
For more information, contact:

Tony Garro
TGarro@BETA-Inc.com

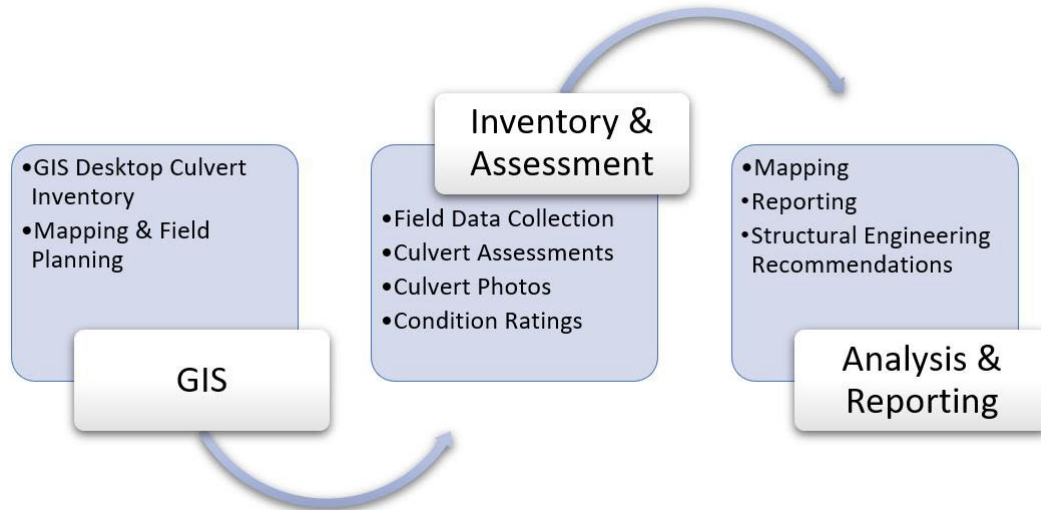
Joseph McGuire
JMcGuire@BETA-Inc.com

401-333-2382
www.BETA-Inc.com

BETA has been a leader in mapping stormwater systems throughout New England. In Massachusetts, we support communities seeking to complete their MS4 Permitting requirements. As part of the regulation review committee for the USEPA and the APWA, BETA was the first firm to complete a Stormwater Master Plan using SRF funding in Massachusetts. Our team is made up of data capture specialists, professional engineers, and environmental scientists, creating a comprehensive and full service approach to mapping, design, and sampling needs.



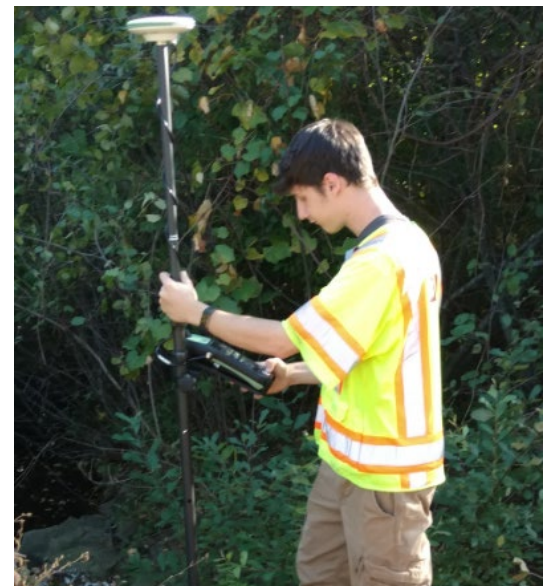
Culvert Assessments



Many communities are looking closely at the integrity and condition of their stormwater management assets. It is important to recognize and maintain the functionality of a stormwater network as it affects the natural environment and the overall safety of a community. BETA has developed a detailed methodology for inventorying, assessing, and prioritizing culverts. By utilizing GIS technology, high-resolution aerial imagery, and existing record plans, BETA can pre-determine with accuracy where culverts exist before conducting field investigations. BETA's team of Data Capture Specialists perform examinations of each culvert at both the inlet and outlet. In Massachusetts, condition ratings are established based on MassDOT's Federal Highway standards. Reports, maps, and culvert repair recommendations by professional engineers are then developed based on the field investigation findings.

Municipal Vulnerability Preparedness (MVP)

BETA also offers Municipal Vulnerability Preparedness (MVP) training with certified MVP staff capable of supporting communities in locating Massachusetts state funding for stormwater related programs. This highlights our own investment and commitment in supporting communities to reach their goals.





www.BETA-Inc.com