

Case study: organic food wholesaler



An expanding specialist food company, our client had outgrown their existing premises and had assessed a number of buildings in their area with a view to relocation.

When they contacted Glenside to assist with initial feasibility studies and space planning, we were able to show through a design process how much additional space could be obtained in their building without the need to relocate.

Expansion without relocation

Periods of economic uncertainty, such as caused by the UK's referendum decision to leave the EU on June 23rd 2016, can have significant effects on businesses planning for the future. For instance, what does a decline in commercial real estate activity mean for businesses that are thinking of relocating to new premises, either as part of their plans for expansion, or to achieve other corporate objectives?

In our 43 years' experience in office interior design and fit-out, we have seen many highs and lows in the commercial property market and, as an alternative to relocating, we have suggested on a number of occasions that businesses instead look to explore the full potential of their current working environment.

It can be perfectly possible to grow your business while remaining in place. This does not have to be seen as a fall-back position. In fact, it can be a really positive decision to make. This has been the case following a full office refurbishment recently undertaken by Glenside for a leading London-based organic food wholesaler.



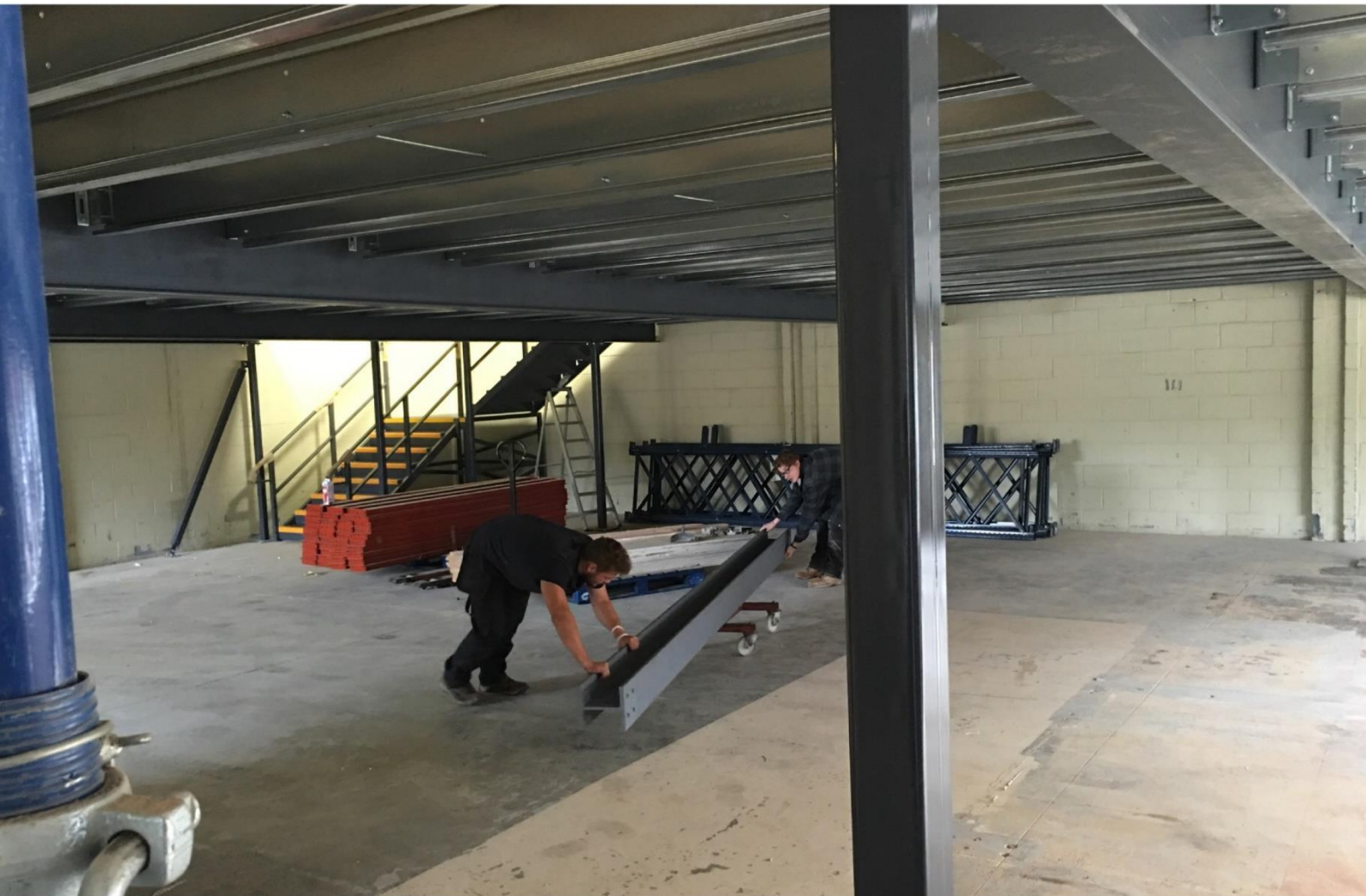
Initial phase

After gaining Building Control Approval for the project, Glenside undertook:

The strip out of existing fixture and fittings

The removal of some internal walls

Installing replacement doors and windows



Glenside

Commercial Interiors LLP

Mezzanine solution

A major part of the solution required to meet the company's need for expansion was the installation of a mezzanine floor.

Constructed above the company's warehouse, the mezzanine floor has been used as the location for a tea-point and a stunning demo kitchen to showcase the company's organic food products.



Glenside

Commercial Interiors LLP

Wide ranging improvements

Among the range of other elements in this extensive commercial interior project carried out by Glenside were:

Developing the interior concept, from consultation and space planning, through to the finalised design

Supply and installation of solid, glass and moving wall partitioning – including graphics in some areas

Installing a suspended ceiling

Undertaking M&E works, including data, electrics, plumbing, air conditioning and ventilation

Sourcing and installing floorcoverings and window blinds

Installation of new and refurbishment of existing washrooms to a high specification



Glenside

Commercial Interiors LLP

Complementing company branding

The completed office design strongly incorporates the company colours and has created a bright modern working environment reflecting the healthy organic qualities of their excellent food products.

Materials sourced and used in this project were specified to meet the client's strong eco-friendly philosophy.

The premises area involved was 6,300 sq. ft. and the contract period lasted 11 weeks.



Can your current premises meet your aspirations?

If you are considering an office move but might be interested instead in looking at upgrading your current premises, please contact us for a consultation.

We will be happy to help you determine if a complete relocation is necessary, or whether in fact your current building contains as yet untapped potential.

GLENSIDE COMMERCIAL INTERIORS LLP

GLENSIDE HOUSE
KITCHENER ROAD
HIGH WYCOMBE
BUCKS
HP11 2SW

T 01494 529803

F 01494 452212

solutions@glensidegroup.net