



# Kingfisher Wind farms chart

**Teesside offshore wind farm**  
January 2020

## Description

The Teesside Offshore Wind Farm is operated by EDF Energy. It is situated approximately 1.5 km from shore in the Northern North Sea, off the North Yorkshire coast. The wind farm is fully operational and has 27 turbines, a total capacity of 62.1 MW and covers an area of approximately 4 km<sup>2</sup>.



## Emergency procedures

1. If you suspect you have snagged a subsea cable or renewable energy structure, DO NOT endanger your vessel and crew by attempting to recover your gear.
2. Carefully plot your vessel's position as accurately as possible.
3. Advise the Coastguard of your situation, and call the 24 hour Emergency Number and state that an incident is occurring concerning a subsea cable or renewable energy structure.

## Reducing the risks whilst fishing

To reduce the risks of fishing near offshore structures, it is essential to be up to date with KIS-ORCA information. KIS-ORCA information is easy to install on your vessel's fishing plotter and ensures skippers are able to make informed decisions for their safety.

The closer to the surface a subsea cable is lifted when fouled by fishing gear, the more danger there is to the fishing vessel. In the interests of fishing safety and to prevent damage to subsea structures, fishermen are advised to exercise caution when fishing in the vicinity of subsea cables and renewable energy structures. Loss of gear, fishing time and catch can result if a trawler snags a subsea structure and there is serious risk of loss of life.

**Emergency contact number +44(0)207 0992099**



**Teesside  
Offshore Wind Farm**

- Key**
- Site boundary
  - Wind turbine
  - Buoy
  - Met Mast
  - Export cable
  - Inter array cable

Grey coloured features displayed on this chart represent additional offshore wind farm structures. Visit [www.kis-orca.eu/map](http://www.kis-orca.eu/map) for more info.

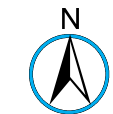
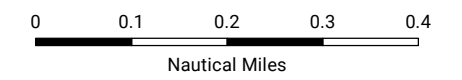


Projection: World\_Mercator  
Spheroid: GCS\_WGS\_1984  
Datum: D\_WGS\_1984

This data is issued as a guide only. Seafish, cable / structure owners and Distributors accept no responsibility for any inaccuracies however caused.

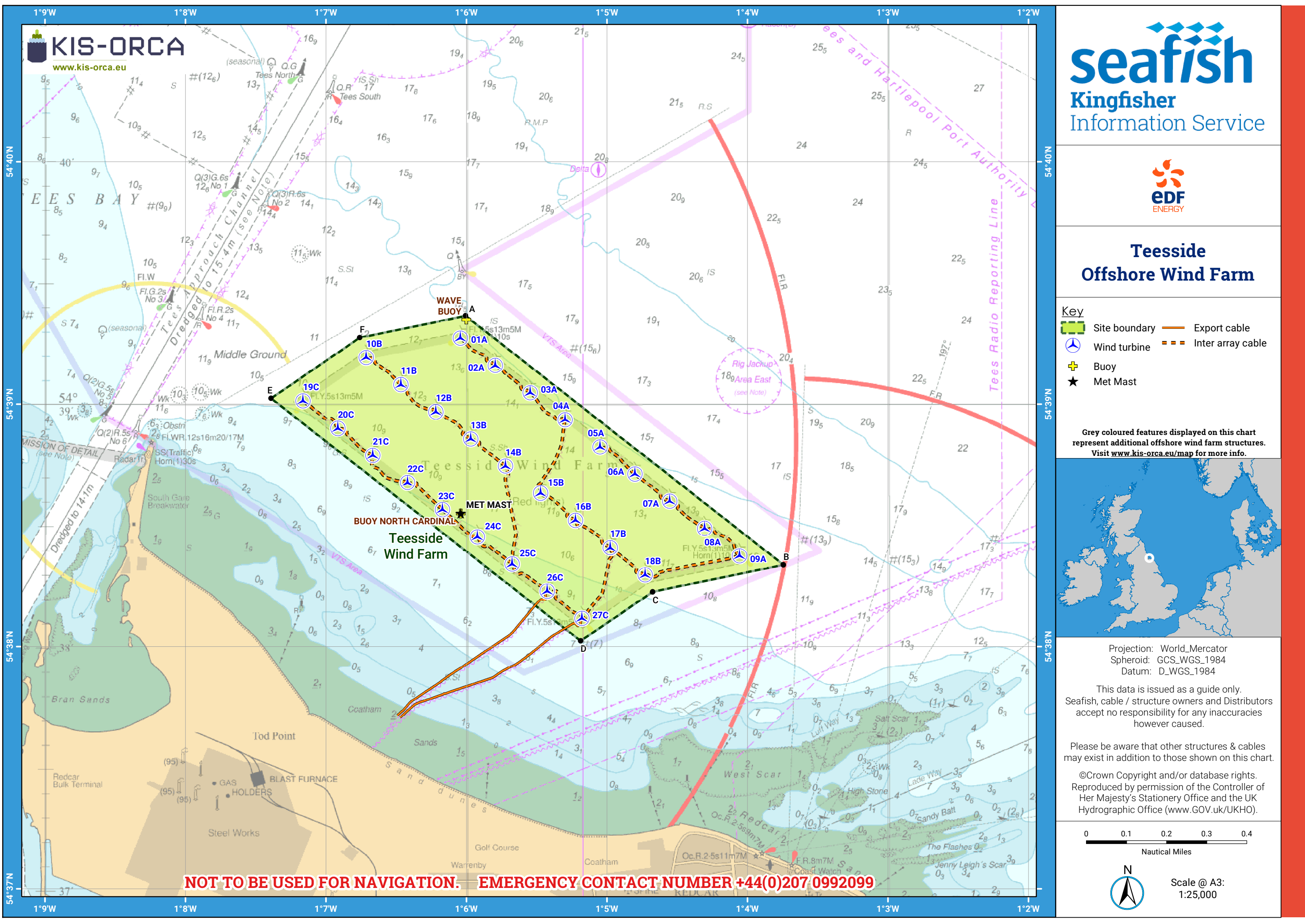
Please be aware that other structures & cables may exist in addition to those shown on this chart.

©Crown Copyright and/or database rights. Reproduced by permission of the Controller of Her Majesty's Stationery Office and the UK Hydrographic Office ([www.GOV.UK/UKHO](http://www.GOV.UK/UKHO)).



Scale @ A3:  
1:25,000

**NOT TO BE USED FOR NAVIGATION. EMERGENCY CONTACT NUMBER +44(0)207 0992099**



# Asset locations



Extents		Infrastructure	
A	54°39.365'N 01°06.005'W	BUOY NORTH CARDINAL	54°38.550'N 01°06.040'W
B	54°38.338'N 01°03.744'W	MET MAST	54°38.550'N 01°06.040'W
C	54°38.226'N 01°04.675'W	WAVE BUOY	54°39.350'N 01°06.00'W
D	54°38.024'N 01°05.187'W		
E	54°39.025'N 01°07.389'W		
F	54°39.275'N 01°06.759'W		

Turbines	
01A	54°39.273'N 01°06.042'W
02A	54°39.160'N 01°05.794'W
03A	54°39.048'N 01°05.546'W
04A	54°38.936'N 01°05.297'W
05A	54°38.824'N 01°05.049'W
06A	54°38.712'N 01°04.801'W
07A	54°38.600'N 01°04.553'W
08A	54°38.488'N 01°04.305'W
09A	54°38.375'N 01°04.057'W
10B	54°39.193'N 01°06.713'W
11B	54°39.081'N 01°06.465'W
12B	54°38.969'N 01°06.217'W
13B	54°38.857'N 01°05.969'W
14B	54°38.745'N 01°05.721'W
15B	54°38.633'N 01°05.472'W
16B	54°38.521'N 01°05.224'W
17B	54°38.408'N 01°04.976'W
18B	54°38.296'N 01°04.728'W
19C	54°39.014'N 01°07.162'W
20C	54°38.901'N 01°06.914'W
21C	54°38.789'N 01°06.666'W
22C	54°38.677'N 01°06.418'W
23C	54°38.565'N 01°06.170'W
24C	54°38.453'N 01°05.921'W
25C	54°38.341'N 01°05.674'W
26C	54°38.229'N 01°05.425'W
27C	54°38.117'N 01°05.178'W



## Contact us

+44 (0) 1472 252 307  
kingfisher@seafish.co.uk  
@kingfisherinfo  
[www.kingfishercharts.org](http://www.kingfishercharts.org)

**Stay up to date: Always ensure you have the latest Kingfisher Bulletin and Offshore Fishing Plotter on-board**

