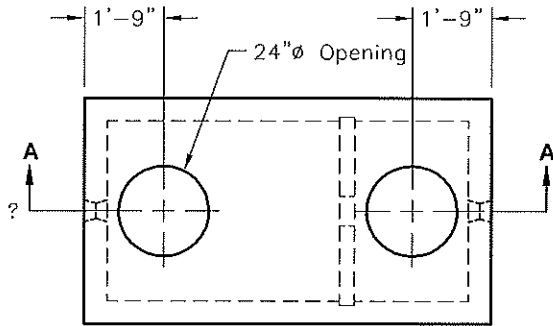
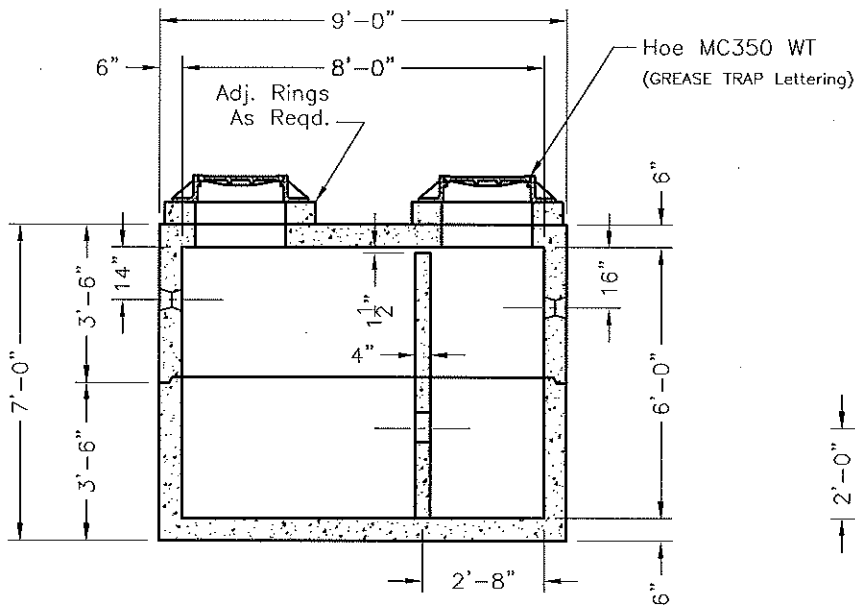


GENERAL NOTES:

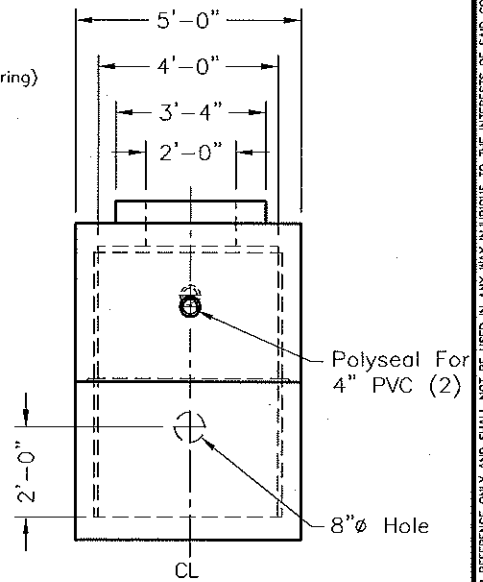
1. Concrete: 28 Day Compressive Strength $f'c = 4,500$ psi
2. Steel Reinforcement: ASTM A-615, Grade 60
3. Cover to Steel-1" Minimum
4. Vaults are Designed to Meet ASTM C858 and ACI 318 with AASHTO HS-20 Loading
5. Earth Cover-0 to 2 Feet
6. Joint Double Sealed with $1\frac{1}{4}$ " Dia. Conesal Or Equivalent
7. Weight: 19,175 Lbs.
8. All Piping And Cleanouts By Others.



PLAN VIEW



SECTION A-A



END VIEW

SCALE: $1/4" = 1'-0"$



747 Allennridge Point, Lexington, KY 40510
Phone: 859-259-1484 Fax: 859-233-9351

ECG1000GTBF

FILE NAME: 384ECG1000GTBF.DWG

ISSUE DATE: January, 2005

www.oldcastleprecast.com

**1000 Gallon Grease Trap
With Single Baffle**

Copyright © 2004 Oldcastle Precast, Inc.

SW-017

THIS DOCUMENT IS THE PROPERTY OF OLDCASTLE PRECAST. IT IS SUBMITTED FOR REFERENCE ONLY AND SHALL NOT BE USED IN ANY WAY INJURIOUS TO THE INTERESTS OF OLDCASTLE PRECAST, INC. ALL RIGHTS RESERVED.