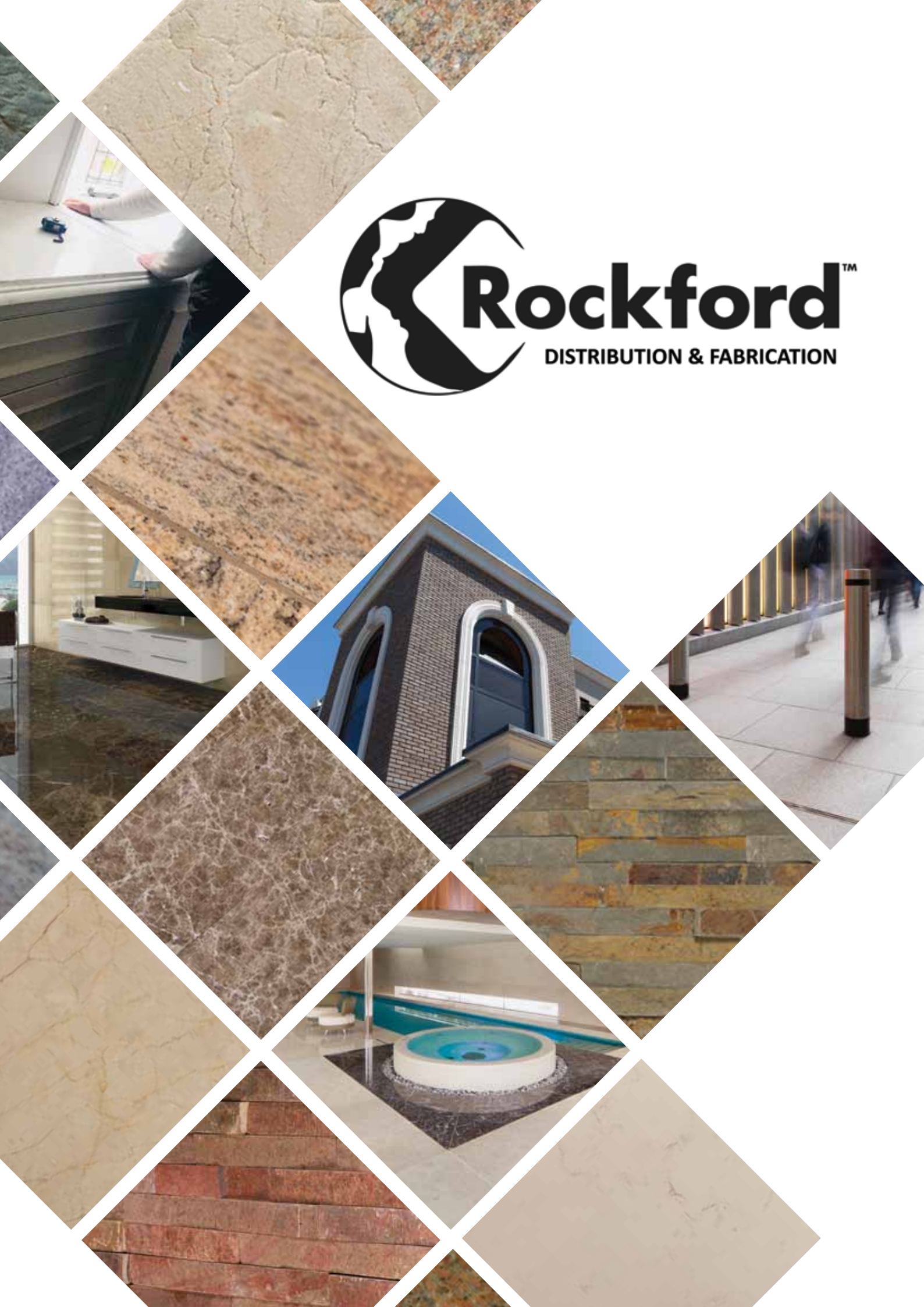




**Rockford**<sup>™</sup>  
DISTRIBUTION & FABRICATION





# Elegant... Timeless... Enchanting...

Allow yourself to be inspired by our  
diverse product range and services.

## Contents

### Rockford Information

Introduction .....	04 - 05
Knowing Your Stones .....	06
Glossary of Stone Terms .....	64
Rockford Stock Buying Guide .....	64

### Distribution Services

CladFX Stone Cladding .....	07 - 12
Interior Stone Tiles .....	13 - 30
Paving, Cobbles & Setts .....	31 - 45
Ancillary Products .....	46 - 51
Installation & Maintenance .....	52
Stone Globes .....	53

### Fabrication Services

Our Factory & Bespoke Services .....	54
Architectural Masonry .....	55
Commercial Interiors .....	56
Streetscape .....	57
Kitchen Worktops .....	58
Patterned & Water Jet Cut Floors .....	59
Staircases .....	60
Swimming Pools .....	61
Vanities .....	62
Fireplaces & Hearths .....	63

# Rockford Who We Are...

*Introducing our Edition 8 brochure, full of natural stone flooring and paving from around the globe. We hope you enjoy browsing our brochure. At the front of the brochure you will find our range of stocked products, all available with immediate despatch and towards the back of the brochure details our bespoke services.*

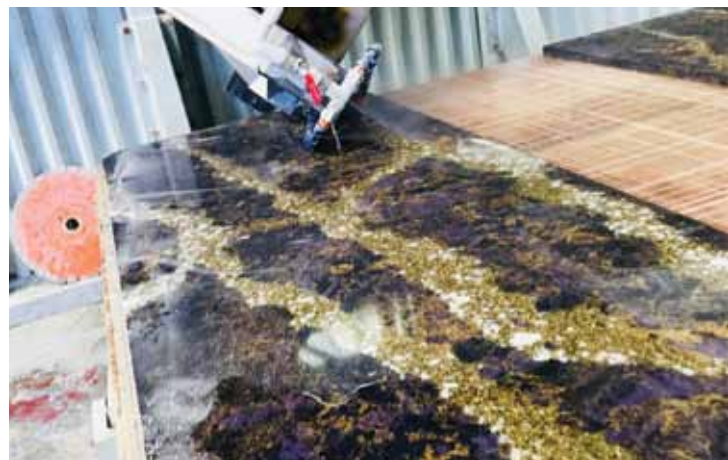
Rockford is an importer, distributor and fabricator of natural stone based on a three acre site in Middlewich, Cheshire. We uniquely cover all aspects of natural stone supply for interiors, exteriors, residential and commercial projects.

Established in 2003, we have many years experience in the procurement of quality stone from around the globe, from countries including Brazil, Portugal, China, Spain, Turkey, Egypt, France and the UK.

Our diverse material range includes slate, travertine, limestone, marble, quartz, quartzite, granite and porcelain. We like to adapt and constantly keep our ranges up to date with 'on trend' stone colours, finishes and sizes – as well as keeping a core stock of traditional favourites.

Buying the highest quality stone has become our focus in recent years, heavily investing in global QC resources to ensure our customers only receive the best products which they have learnt to expect from us.

We are a customer focused business, our service to you is our absolute priority. As a trade supplier we want your repeat business. Our customers include designers, builders, landscapers, tilers, retail tile shops, kitchen showrooms, contractors and developers. Working with architects and designers on the specification of our products. Our level of service and attention to detail ensures that you can keep your client's happy as well.





## Offering unique bespoke services...

*In response to an increased demand for 'made to order' products we began to transition from pure distribution to fabrication in around 2008. Today, we have our own stone factory on our Cheshire site with CNC machinery and stone masons along with in house CAD technicians and project estimation.*

Our bespoke services include product sourcing, value engineering, large scale manufacture abroad, in house fabrication and project management.

We have proudly worked on some of the most high profile public realm projects and luxurious homes throughout the UK. Supplying complex street scaping, hidden roof tops, magnificent fountains, luxurious book matched bathrooms, patterned floors and high quality kitchen worktops with luxury added extras that all come as standard when you buy from Rockford.



# Knowing Your Stones.

## Basalt

Formed from cooled compacted magma, basalt is created from the residual effect of a volcano. As a tile or paving, they provide a hard wearing and practical surface. Our basalt has cool, crisp lines perfect for a contemporary look both inside and out.

## CladFX Wall Cladding

A natural stone wall cladding system uniquely designed for ease of installation. Providing a unique feature wall suitable for use inside and out. Each piece measures 600 x 150mm with corner pieces available for edges. Available in a range of colours.

## Granite

An igneous rock that is extremely hard wearing and versatile, which makes it suitable for so many applications in both residential and commercial environments. Granite lends itself to many finishes and can take an extremely high buff polish. Relatively consistent for a natural stone material, granite can be used for high traffic areas as well as exterior cladding. Although many colours can be found around the world, the most popular colour range used in the UK is from light grey to black.

## Limestone

A sedimentary stone widely used for floor and wall tiles. Limestone can give an understated chic look, giving that feel of luxury and superior quality without the obvious opulence of marble. With its earthy colour pallet, the finish can determine the overall effect. Choose between honed finish for a smooth contemporary look, very popular in London apartments and around swimming pools or a tumbled finish for the authentic flag stone appearance that is exceptionally popular.

## Marble

A hard crystalline metamorphic rock that takes a high polish. Marble is a timeless and classic stone which has always been synonymous with luxury and elegance, there is no substitute for the real thing. Marble is often characterised by its veining which is often in contrast to the base colour. Predominantly found in a polished, high sheen form, we can also supply this stone in a honed finish, giving a more practical finish for wet areas, such as bathrooms, without compromising on the overall design.

## Sandstone

A classic sedimentary rock used in domestic construction since prehistoric times. Sandstone is characterised by its granular surface, its general minerals makeup is the same whether the sandstone is quarried in the UK or India. In fact, Indian sandstone flags are the widest used residential paving material in this country. We stock a full range of Indian sandstone including the popular fettled edge, in both traditional hand cut as well as fully calibrated. In recent years, sawn sandstone has become an increasingly popular paving option for contemporary designed homes. Our sandstone paving is available in a wide selection of colours, finishes and sizes.

## Slate

A traditionally used material for flooring, paving and wall cladding. Slate can uniquely provide both a contemporary and traditional finish like no other material. Hard wearing, and available in the darker spectrum of colours. Its texture and tone makes it very easy to tell the real thing from the fakes. Available in a cleft or riven finish which both provide excellent slip resistance, and honed metallic quartz slates for sheen and depth.

## Travertine

A charming popular stone owing to its natural colour pallet that seems to lend itself to any environment. Honed and Filled travertine is by far the most widely used finish, perfect for bathrooms, wet rooms and kitchens. Travertine can be cut along the vein, like a marble. However, the cut we commonly associate with travertine is one where it has been cut across the veins causing natural holes in the stone. The holes are filled with a resin at the factory to give a smooth non polished finish. We also stock a natural effect travertine which is unfilled with perfectly chipped edges. This gives an rustic charm.



CladFX Stone Cladding



## Copper CladFX

**Available Sizes:**  
600mm x 150mm x 15-20mm

Stone Wall Cladding For Interior & Exterior Use.



## Nero CladFX

**Available Sizes:**  
600mm x 150mm x 15-20mm

Stone Wall Cladding For Interior & Exterior Use.





## Rust CladFX

**Available Sizes:**

600mm x 150mm x 15-20mm

Stone Wall Cladding For Interior & Exterior Use.



## Travertine CladFX

**Available Sizes:**

600mm x 150mm x 15-20mm

Stone Wall Cladding For Interior & Exterior Use.



## White Quartzite CladFX

**Available Sizes:**

600mm x 150mm x 15-20mm

Stone Wall Cladding For Interior & Exterior Use.



## Silver Grey CladFX

**Available Sizes:**

600mm x 150mm x 15-20mm

Stone Wall Cladding For Interior & Exterior Use.



## Silver Sunset CladFX

**Available Sizes:**

600mm x 150mm x 15-20mm

Stone Wall Cladding For Interior & Exterior Use.



Interior Stone Tiles



CLEFT FINISH

## Brazilian Grey Slate

Available Sizes:

600mm x 300mm

600mm x 600mm

600mm x 400mm

600mm x 900mm



CLEFT FINISH - STRAIGHT EDGE

## Brazilian Black Slate

Available Sizes:

600mm x 300mm

600mm x 600mm

600mm x 400mm

600mm x 900mm



RIVEN FINISH

## Chinese Rust Slate

Available Sizes:

600mm x 300mm

600mm x 600mm

600mm x 400mm

600mm x 900mm



RIVEN FINISH

## Chinese Black Slate

Available Sizes:

300mm x 300mm

300mm x 300mm

400mm x 400mm

400mm x 400mm

600mm x 300mm

600mm x 300mm



HONED FINISH

## Copper Slate

Available Sizes:

600mm x 300mm

600mm x 600mm



HONED FINISH

## Ocean Slate

Available Sizes:

600mm x 300mm

600mm x 600mm





HONED FINISH

## Silver Nickel Slate

Available Sizes:  
600mm x 300mm  
600mm x 600mm



HONED FINISH

## Moleanos White Limestone

Available Sizes:  
600mm x 400mm  
600mm x 600mm  
600mm x 900mm



HONED FINISH

## Moleanos Blue Limestone

**Available Sizes:**

600mm x 400mm

600mm x 600mm

600mm x 900mm



HONED FINISH

## Moleanos Beige Limestone

**Available Sizes:**

600mm x 400mm

600mm x 600mm

600mm x 900mm



TUMBLED FINISH

## Crema Venato Limestone

**Available Sizes:**

600mm x Free Length

600mm x 900mm



TUMBLED FINISH

## La Rochelle Limestone

**Available Sizes:**

600mm x Free Length

600mm x 900mm



TUMBLED FINISH

## Milano Grey Limestone

**Available Sizes:**

600mm x Free Length

600mm x 400mm

600mm x 900mm



TUMBLED FINISH

## Royal Grey Limestone

**Available Sizes:**

600mm x Free Length

600mm x 400mm

600mm x 900mm



HONED FINISH

## Corsham Cream Limestone

Available Sizes:  
600mm x Free Length



TUMBLED FINISH

## Imperial Bronze Limestone

Available Sizes:  
600mm x Free Length



SANDBLASTED & BRUSHED FINISH

## Imperial Bronze Limestone

Available Sizes:  
600mm x Free Length



CHISELLED EDGE

## Travertine

Available Sizes:  
Opus Pattern Packs



HONED & FILLED FINISH

## Classic Travertine

Available Sizes:  
600mm x 400mm  
600mm x 300mm



POLISHED FINISH

## Crema Marfil Marble

Available Sizes:  
600mm x 300mm  
600mm x 600mm



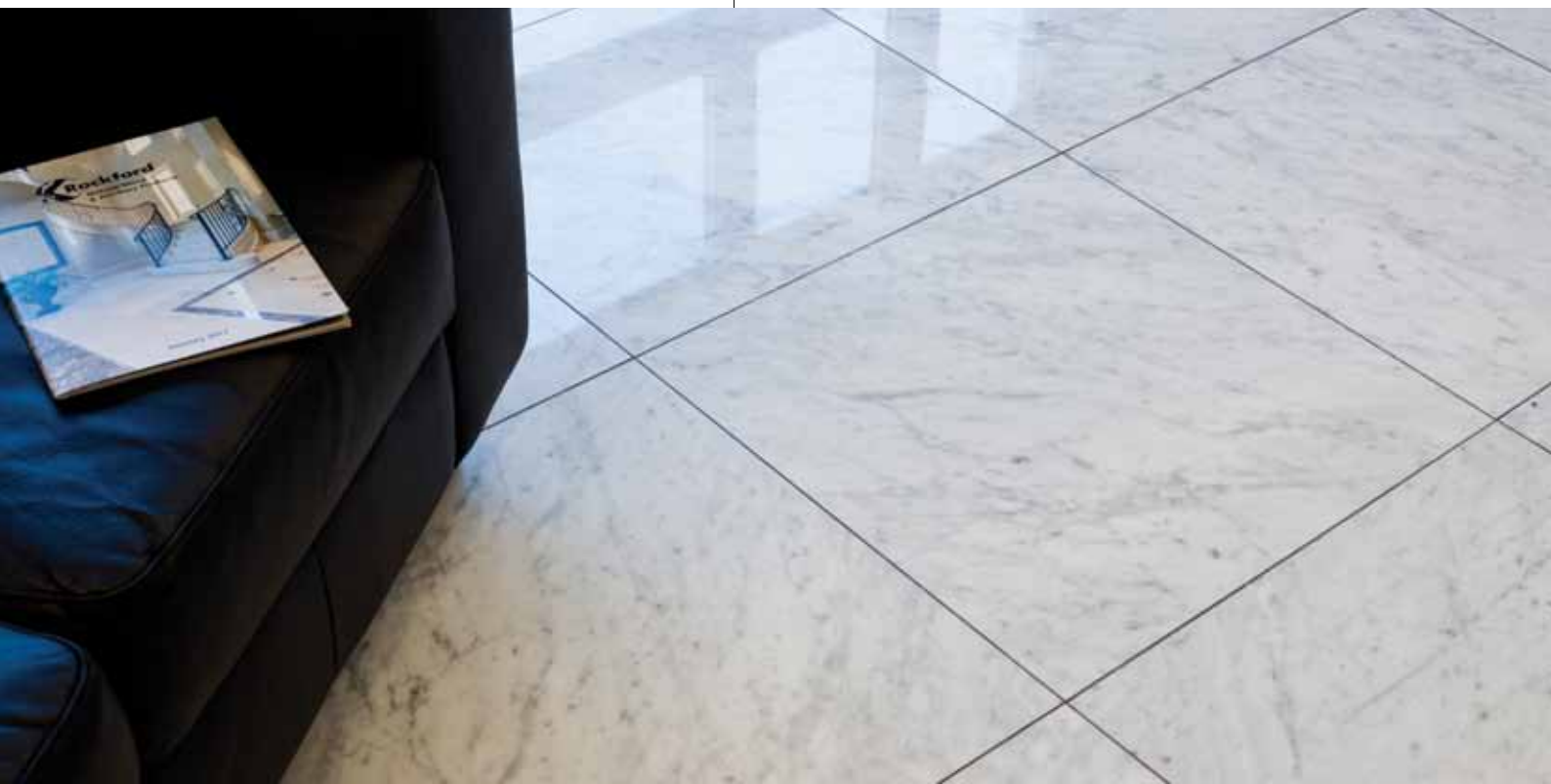
POLISHED FINISH

## Dark Emperador Marble

Available Sizes:

600mm x 300mm

600mm x 600mm



POLISHED FINISH - SOLID

## Bianco Carrara Marble

Available Sizes:

305mm x 305mm

610mm x 305mm

610mm x 610mm

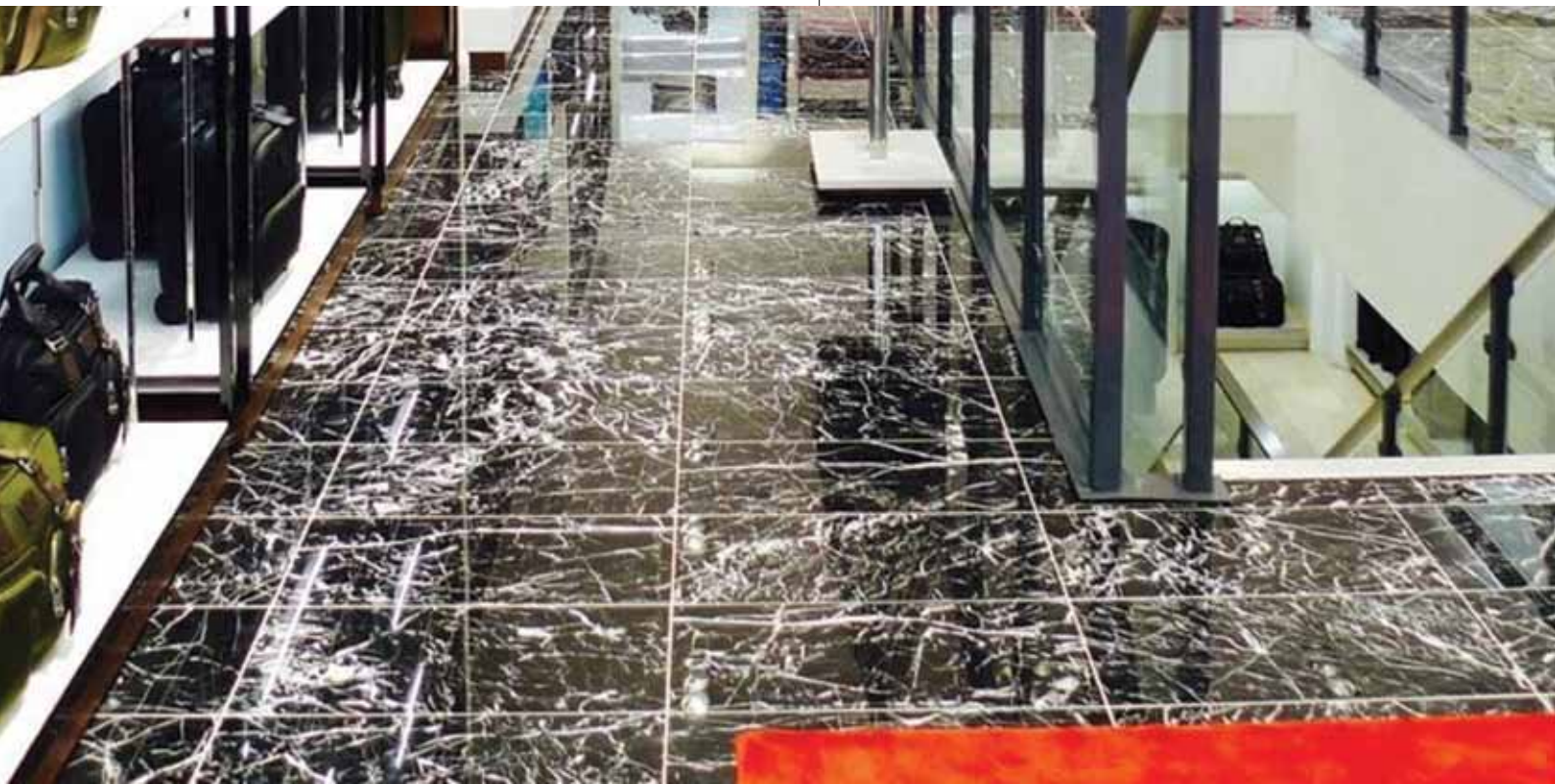




HONED FINISH

## Bianco Carrara Marble

Available Sizes:  
305mm x 305mm  
610mm x 305mm  
610mm x 610mm



POLISHED FINISH

## Nero Marquina Marble

Available Sizes:  
305mm x 305mm      610mm x 406mm  
610mm x 305mm      610mm x 610mm



POLISHED FINISH

## White Emperador Marble

Available Sizes:

610mm x 610mm



POLISHED FINISH

## Absolute Black Granite

Available Sizes:

610mm x 305mm

610mm x 610mm



POLISHED FINISH

## Star Galaxy Granite

Available Sizes:  
610mm x 305mm



HONED FINISH

## Java Black Basalt

Available Sizes:  
300mm x 300mm      610mm x 406mm  
600mm x 300mm      610mm x 610mm



HONED FINISH

## Vesuvio Grey Basalt

**Available Sizes:**

300mm x 300mm

600mm x 300mm

400mm x 400mm

600mm x 400mm



TUMBLED FINISH

## Minster Yellow Limestone

Available Sizes:  
600mm x Free Length

This product is suitable for use as interior tiles and on patios for a seamless indoor to outdoor look.



FLAMED & BRUSHED FINISH

## St Pierre Limestone

Available Sizes:  
600mm x 600mm      600mm x 900mm

This product is suitable for use as interior tiles and on patios for a seamless indoor to outdoor look.

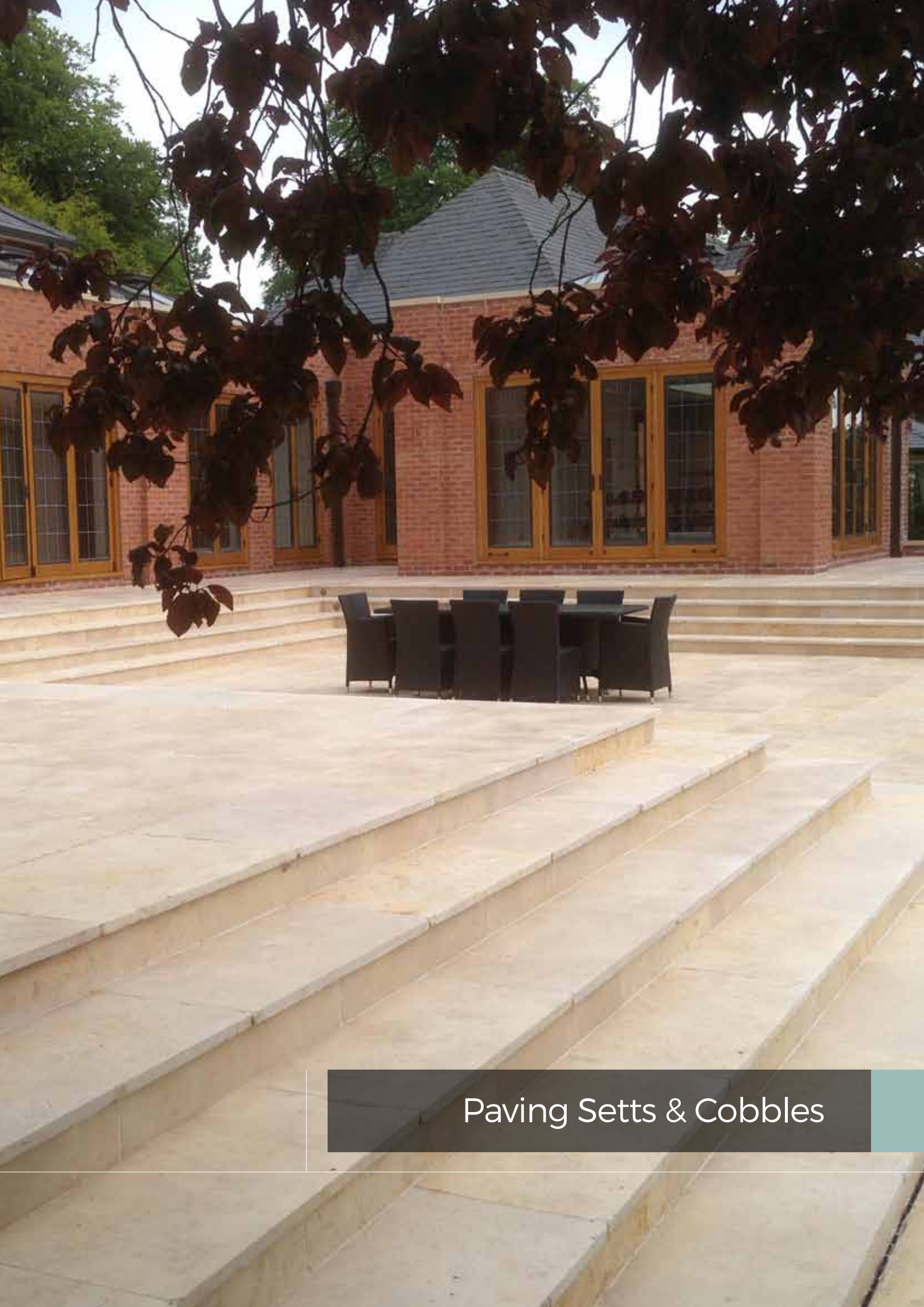


TUMBLED FINISH

## Minster Grey Limestone

**Available Sizes:**  
600mm x Free Length

This product is suitable for use as interior tiles and on patios for a seamless indoor to outdoor look.



Paving Setts & Cobbles



20mm URBAN PAVING RANGE

## Ivory Porcelain

Available Sizes:  
600mm x 600mm



20mm URBAN PAVING RANGE

## Charcoal Porcelain

Available Sizes:  
600mm x 600mm





20mm URBAN PAVING RANGE

## Grey Porcelain

Available Sizes:  
600mm x 600mm



20mm URBAN PAVING RANGE

## Tan Porcelain

Available Sizes:  
600mm x 600mm  
600mm x 900mm



20mm URBAN PAVING RANGE

## Limestone Porcelain

Available Sizes:  
600mm x 600mm



LIMESTONE PAVING RANGE - TUMBLED FINISH

## Royal Grey Limestone

Available Sizes:  
600mm x 600mm  
600mm x 900mm



LIMESTONE PAVING RANGE - TUMBLED FINISH

## Crema Venato Limestone

Available Sizes:

600mm x 400mm

600mm x 600mm

600mm x 900mm



LIMESTONE PAVING RANGE - TUMBLED FINISH

## La Rochelle Limestone

Available Sizes:

600mm x 400mm

600mm x 600mm

600mm x 900mm



LIMESTONE PAVING RANGE - RIVEN FINISH

## Lime Black Limestone

Available Sizes:  
60 series patio packs



INDIAN SANDSTONE PAVING RANGE

## Khandla Grey Sandstone

RIVEN FINISH

Available Sizes:  
600mm x 900mm  
60 series patio packs



INDIAN SANDSTONE PAVING RANGE

## Raj Green Sandstone

RIVEN FINISH

**Available Sizes:**

600mm x 900mm

60 series patio packs

Circle packs are also available in this material.



INDIAN SANDSTONE PAVING RANGE

## Reppon Sandstone

RIVEN FINISH

**Available Sizes:**

60 series patio packs



INDIAN SANDSTONE PAVING RANGE

## Fossil Mint Sandstone

RIVEN FINISH

**Available Sizes:**

60 Series Patio Packs

Circle packs are also available in this material.



INDIAN SANDSTONE PAVING RANGE

## Camel Dust Sandstone

RIVEN FINISH

**Available Sizes:**

600mm x 900mm

60 series patio packs



INDIAN SANDSTONE PAVING RANGE

## Autumn Brown Sandstone

RIVEN FINISH

Available Sizes:

60 Series Patio Packs

Circle packs are also available in this material.



INDIAN SANDSTONE PAVING RANGE

## Raveena Sandstone

RIVEN FINISH

Available Sizes:

60 Series Patio Packs

Circle packs are also available in this material.



SANDSTONE PAVING RANGE

## Rainbow Sandstone

SAWN & HONED FINISH

Available Sizes:  
60 Series Patio Packs



SANDSTONE PAVING RANGE

## Teak Sandstone

SAWN & HONED FINISH

Available Sizes:  
60 Series Patio Packs





SANDSTONE PAVING RANGE

## Moorland Sandstone

SANDBLASTED FINISH

Available Sizes:  
600mm x 600mm  
600mm x 900mm



GRANITE PAVING RANGE - FLAMED FINISH

## Arctic Grey Granite

Available Sizes:  
600mm x 150mm      600mm x 600mm  
600mm x 400mm      600mm x 900mm



GRANITE PAVING RANGE - FLAMED FINISH

## Ash Grey Granite

Available Sizes:

600mm x 400mm

600mm x 600mm

600mm x 900mm



BASALT PAVING RANGE - FLAMED FINISH

## Java Black Basalt

Available Sizes:

600mm x 400mm

600mm x 600mm

600mm x 900mm



SLATE PAVING RANGE - CLEFT FINISH

## Brazilian Black Slate

Available Sizes:

600mm x 600mm

600mm x 900mm



SLATE PAVING RANGE - RIVEN FINISH

## Chinese Rust Slate

Available Sizes:

600mm x 600mm

600mm x 900mm



COBBLES & SETTS - TUMBLED FINISH

## Crema Venato Limestone

Available Sizes:

200mm x 100mm x 30mm



COBBLES & SETTS - TUMBLED FINISH

## La Rochelle Limestone

Available Sizes:

200mm x 100mm x 30mm

## Cobbles & Setts

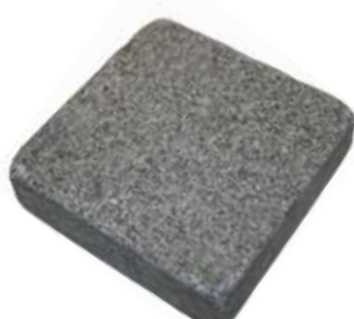


**Arctic Grey Granite**

**Finish:** Split

**Available Sizes:**

100mm x 100mm x 50mm  
200mm x 100mm x 50mm



**Ash Grey Granite**

**Finish:** Sawn & Tumbled

**Available Sizes:**

100mm x 100mm x 30mm  
200mm x 100mm x 30mm



**Arctic Grey Granite**

**Finish:** Sawn & Tumbled

**Available Sizes:**

100mm x 100mm x 30mm  
200mm x 100mm x 30mm

## Cobbles & Setts



**Java Black Basalt**

**Finish:** Split

**Available Sizes:**

100mm x 100mm x 50mm  
200mm x 100mm x 50mm



**Lime Black Limestone**

**Finish:** Split

**Available Sizes:**

100mm x 100mm x 40mm - 60mm  
200mm x 100mm x 40mm - 60mm



**Raj Blend Sandstone**

**Finish:** Split

**Available Sizes:**

100mm x 100mm x 40mm - 60mm  
200mm x 100mm x 40mm - 60mm

## Adhesives



### **Tilemaster FlexRapid Adhesive (20 Kg)**

Trade FlexiRapid is a polymer modified, flexible rapid setting cement based floor and wall tile adhesive with increased adhesion and non-slip properties..

**Available Colours:**

White & Grey

Trade FlexiRapid can be used internally and externally.

## Flexible Grout



### **Tilemaster Grout 3000 (5 Kg)**

Tilemaster Grout 3000 is a premium, highly versatile, flexible, fast setting wall and floor grout, specially formulated using carefully selected cements and additives, to produce a smooth and controlled workability.

**\*Available Colours:**

White, Limestone, Jasmin, Beige, Sandstone, Mid Grey, Charcoal & Light Grey.

\*Additional grout colours can be ordered in, please enquire.

## Jointing Compound



### **EASY Joint (12.5 Kg)**

EASYJoint is the original brush-in jointing compound and is the best all weather paving joint compound available and made in the UK.

**\*Available Colours:**

Stone Grey, Buff & Mushroom

## Sealants



### LTP MPG Sealer

Impregnating sealer for polished porcelain, marble, limestone, slate and granite.

**Available Sizes:** 1 Litre & 5 Litre



### LTP Mattstone Sealer

Suitable for all types of natural and artificial stone, unglazed porcelain, sandstone, slate, marble, terracotta, quarry, brick & paving.

**Available Sizes:** 1 Litre & 5 Litre



### LTP Ironwax Satin Sealer

Enhances colour and texture, protects against staining and stubborn dirt, easy to maintain.

**Available Sizes:** 1 Litre & 5 Litre

Additional sealants can be ordered in, please enquire.



### LTP Mattstone H2O Sealer

For all types of natural and artificial stone, quarry, brick & paving. Honed, rough cut and polished surfaces.

**Available Sizes:** 1 Litre & 5 Litre



### LTP Stone Oil Sealer

Easy to apply oil based impregnating sealer ideal for low porosity stone & terracotta.

**Available Sizes:** 1 Litre & 5 Litre



### LTP Colour Intensifier & Stainblock

A mat finish strong colour enhancer with stainblock action for slate, stone & quarry tiles.

**Available Sizes:** 1 Litre & 5 Litre

## Cleaners



### LTP Grimex

Intensive cleaner that removes oil, grease, ingrained dirt, grime and wax layers from stone, slate and porcelain tiles and paving.

**Available Size:** 1 Litre



### LTP Floor Shine

A highly effective maintenance cleaner for tiled surfaces. Cleans and protects in one application.

**Available Size:** 1 Litre



### LTP Power Stripper

Intensive cleaner For interior & exterior use. A high performance intensive cleaner for stripping and cleaning of vitrified glazed ceramics

**Available Size:** 1 Litre

Additional cleaners can be ordered in, please enquire.



### LTP Grout Stain Remover

Cement, Limescale & Grout Residue Remover For Interior & Exterior use For glazed and un-glazed ceramics,

**Available Size:** 1 Litre



### LTP Solvex

A powerful non-caustic stripper that softens most types of surface sealer, which can then be removed with ease.

**Available Size:** 1 Litre



### LTP Waxwash

A gentle cleaner containing a trace of linseed oil especially formulated to clean without damaging the most delicate surfaces.

**Available Size:** 1 Litre



## Additional Products



**Tilemaster Flexmaster  
Multi Purpose Additive**

As a flexible additive, Flexmaster will increase the adhesion, flexibility and durability of Tilemaster cement based adhesives and grouts

**Available Size:** 5 Litre



**Tilemaster Prime Plus**

A highly advanced styrene butadiene polymer designed to prime, stabilise and seal substrates.

**Available Size:** 5 Litre



**Tilemaster Backer Board**

Tilemaster thermal construction boards are a fantastic multi purpose tilebacker board.

**Size:** 1200mm x 600mm x 10mm

Additional products can be ordered in, please enquire.



**Tilemaster Levelflex**

Tilemaster LevelFlex is a fast setting, flexible, fibre reinforced self levelling compound.

**Available Size:** 20Kg



**Tilemaster  
Anti Fracture Mat**

Tilemaster Anti-fracture Mat is an anti-fracture / uncoupling matting designed for use on floor tile installations.

**Available Sizes:** 1 Litre & 5 Litre



**Pedestals**

Adjustable easy to instal pedestals for a free draining terrace, roof or balcony. For residential or industrial application.

**Available In 5 Sizes.**

## Ecoprotec (LTP's eco friendly range of sealants and cleaners)



### Natural Finish Stone Sealer

Water based sealer for all types of natural and artificial stone, quarry, brick, concrete & paving, honed, rough cut and polished surfaces.

**Available Size:** 5 Litre



### Satin Finish Surface Wax

A water based finishing wax for interior use, ideal for both treatment and aftercare.

**Available Size:** 5 Litre



### Anti Graffiti Sealer

Waterbased impregnating sealer. Helps prevent against staining. Allows surface to breathe.

**Available Size:** 5 Litre

Additional products can be ordered in, please enquire.



### Cement & Grout Residue Remover

Rapid action cleaning agent for removing cement residues, grout stain, efflorescence and other similar deposits.

**Available Size:** 5 Litre



### Colour Enhancing Stone Sealer

Waterbased impregnating sealer provides enhanced natural finish. Allows surface to breathe.

**Available Size:** 5 Litre



### External Paving Cleaner.

Cleans and removes dirt including stubborn green and dark deposits caused by plants and leaves.

**Available Size:** 5 Litre

## Ecoprotec (LTP's eco friendly range of sealants and cleaners)



### Graffiti Remover

Ecological cleaner for all types of paint and graffiti, suitable for interior & exterior use.

**Available Size:** 5 Litre



### Natural Stone & Porcelain After Care Cleaner

High quality every day after care floor wash that is suitable for interior and exterior use.

**Available Size:** 5 Litre



### Polished Porcelain Sealer

Waterbased impregnating sealer for all types of polished porcelain. Helps prevent against staining. Allows surface to breathe.

**Available Size:** 5 Litre

Additional products can be ordered in, please enquire.



### Rust Stain Remover

Removes surface rust stains. Non-acidic formulation, it is particularly suited for delicate applications such as polished marble.

**Available Size:** 5 Litre



### Stone & Tile Intensive Cleaner

High performance intensive cleaner for stripping and cleaning. Helps breakdown oxidised linseed oil and other mineral oils.

**Available Size:** 5 Litre

# Installation & Maintenance of Natural Stone Tiles.

## Choosing a fitter

We recommend that you select a tiler / stone fixer / landscaper that has a portfolio of work behind them similar to the products you have chosen, along with the necessary equipment. Although we have written some general guidelines below it is the tiler or fitter that takes ultimate responsibility for the installation.

## Delivery of your order

Ensure in advance that there is good access to the property. Most orders arrive on a large articulated lorry, therefore it is important that you tell us if there is any restricted access as this may require a different vehicle to be booked. The delivery driver will use a pump truck to deliver your goods as close to the property as possible. The goods will be delivered on a pallet or in a crate, which the driver will leave with you. The tiles and paving should then be kept in a dry place

## Checking & Signing for your goods

Before signing the delivery note, have a quick check of your order for any obvious signs of damage. If all looks in good order, sign the delivery note. If you can see any damages, then please note this on the delivery note. Please let us know of any problems or discrepancies as soon as possible, prior to installation.

## Preparing your tiles for installation

It is important to remove any dust from the tiles, front and back prior to fitting. Stone should be laid on a flat level surface, ideally concrete. Please take further appropriate advice if tiling on to a timber substrate or a heated floor. Any wet areas should be appropriately tanked. Stone tiles should be cut using a water fed tile cutter with a diamond tipped blade.

## Installation of natural stone tiles

We can supply all tile adhesive, grout and anything required for fixing. This should be a good quality flexible adhesive in white for light coloured stone, or grey for darker stone. It is important that the manufacturers instructions are read and followed.

Natural stone should never be 'dot and dabbed', the back of each tile should be completely covered with adhesive using a trowel, removing any excess with a damp cloth straightaway. Use hand pressure to level the stone.

## Sealing natural stone tiles

After your stone tiles have been installed (before grouting) your fitter should clean the tiles and then apply an impregnating sealant. A second coat of either impregnating sealant or a topical sealant (depending on the stone type) should be applied after grouting.

## Grouting

Grout should be applied approximately 1-2 days following fitting to ensure the tiles have fully dried. Dark grout is not recommended for lighter stone tiles as it may cause staining.

The grout manufacturer's instructions should be read and followed. Ensure the grout is suitable for the joint width that has been used. Masking tape should not be used as this may also cause staining. Any excess grout should be wiped away before it begins to dry. Once the grout is fully dry, wash the floor with an appropriate detergent and fully dry it once again before applying the subsequent layer of sealant.

## Caring for your floor

Selecting the correct stone for your lifestyle is essential, and as long as you have the right tile the maintenance does not necessarily have to be too taxing.

A matt at the entrance and exit areas will avoid any grit scratching the floor. Regular sweeping and vacuuming will ensure dirt does not get trapped in to the stone. Our specialist LTP cleaning products are highly recommended as they are made for stone. Stone will naturally wear over the years and may accumulate dirt. Therefore we recommend a deeper clean approximately every 3-4 years. This can be done by employing a professional or purchasing a more heavy-duty cleaner from our LTP range.

## Products that should NEVER be used on stone

Bleach or bleach-based products, acid or alkali based products, Cillit Bang, washing up liquid, steam cleaners and de-greasing detergents.



# Stone Effect Globe Lights.

*Designed and manufactured in the UK, Stone Globe Lights are an LED powered garden light that not only complements your natural stone paving but also provides an ambient lighting source.*

Outdoor lighting is an important consideration; Stone Globe Lights perfectly combine practicality and beautiful design.

Available in six colours: Granite, Bath Stone, Portland Stone, Limestone, Weathered Stone & Sandstone.

## **Product Specification:**

- Available in three diameters: 280mm, 380mm and 500mm.
- Weight of unit: 1 kg 280mm, 1.75 kg 380mm, 2.25 kg 500mm.
- Voltage: Mains voltage 230v, Low voltage 12v, and Solar.
- Installation: Supplied with mounting bracket for fixing to hard surfaces. Optional ground spike is available. See spike details in Accessories section.
- Material: Polyethylene with unique rough surface, UV & frost resistant.
- Non- corrosive.
- Lightsource for 230v Sphere: E27 lampholder. Recommended LED GLS 8W - 13.5W bulb, dependant on size of Globe and light preference. Cabling and bulb not included.
- Lightsource for 12v Sphere: Fitted with G4 lampholder and terminal block. Requires driver. Cabling and bulb not included.
- Protection: IP65.
- Guarantee: 5-year guarantee. This warranty does not include lamps/ lampholders which are deemed consumables. With the Solar Sphere the solar panel carries a one year guarantee.

# Our Factory & Bespoke Services.

The following pages are examples of bespoke work we have carried out. From single vanities to entire streetscape projects, we can confidently handle any size bespoke project requiring stone.

The first step is always getting in touch to make that initial enquiry. Send your plans over to us and we aim to provide an efficient quotation service. Our in house CAD technicians are able to provide fabrication drawings to ensure accuracy in all stages of production. Depending on the size and scope of the project, your project manager will identify the best source of fabrication. Whether that is in house, at our own factory or abroad at one of our partner factories. With over 10 years experience of managing large scale fabrication abroad, with global QC teams in place we can ensure that the quality and specification is always adhered to.

Product sourcing is one of our specialities, with vast global stone knowledge we work with architects, designers and contractors to ensure that your project comes within budget and without compromising the vision of the architect or designer.

We are able to offer flexible solutions, therefore we are happy to supply our products on a supply only or a supply and fit basis to suit your requirements.

We have a professional friendly approach with the experience in our field and attention to detail that will put you at ease and give you the confidence that you have brought your project to the right place!





## Architectural Masonry & Stone Facades.

*We supply solid stone architectural masonry and stone facades for residential homes and commercial buildings.*

As well as being able to supply all the traditionally used masonry stones including red sandstone, Portland stone and York Stone we can value engineer or offer alternatives to suit your budget.

**Projects can be quoted on a supply only or a supply and fit basis.**



# Commercial Interiors.

*Whether you are designing a hotel, restaurant, office building or religious institution, we have the experience to guide you through appropriate materials and to bring your designs to life.*

Commercial interiors can vary greatly, but they all have one thing in common – high traffic. With our product knowledge and experience in the commercial application of stone we are well placed to assist designers and architects in making the correct material selection.

*We can offer a variety of services for commercial interiors including:*

- Stone tiles from stock or bespoke sizes for floors and walls.
- Book matched, waterjet cut and intricate flooring.
- Worktops for reception desks, bars and vanities.
- Feature wall cladding.
- Stone wash basins.
- Marble, Granite or Quartz restaurant and bar tables.
- Staircases with anti slip step treads.
- Architraves, window cills and much more...







## Streetscapes - Commercial & Public Realm.

*Rockford has been supplying stone for commercial and public realm streetscape since 2008.*

Since the inception of our bespoke contracts department, we have been working with leading architects, designers, cost consultants, quantity surveyors and project managers to deliver award winning streetscape schemes throughout the UK.

We have amassed a reputation for specialism in our field along with quality, reliability, excellent service and attention to detail.

Whether the project is manufactured abroad or in our own factory, we will ensure the design, fabrication, quality control and delivery of the project giving you total piece of mind and transparency.

We are proud to have manufactured the stone elements for award winning projects including; Rathbone Place, Paddington Phase 2, St Helen's Piazza, Broadgate Circle, Battersea Power Station... and many more.

# High Quality Kitchen Worktops.

A Rockford kitchen worktop is a premium product, for discerning clients.. From start to finish we make no compromises. From precision laser templating, to the polished undersides, mason mitres, biscuit jointing and CNC accuracy. These are the high quality extras that come as standard on a Rockford worktop.

Selecting the material is usually the hardest part. We have accounts with all the leading branded quartz companies, granite slab stockists as well as our own stock of material. Many of these product samples can be viewed in our showroom.

Following material and edge profile selection, we calculate the cost based of the worktops based on the kitchen plans. We then agree the time scale for the project. The lead time for a kitchen worktop is approximately 5 – 10 working days dependent on a number of factors but mostly slab availability.

Once the kitchen has been installed our templater will visit to take accurate measurements using a laser, for total precision. The measurements will be uploaded to our CAD system and converted to CNC files for fabrication.

The finished worktops will be delivered and fitted by our team on the agreed date for installation.





## Patterned & Waterjet Cut Floors.

*Using waterjet and CNC technology we are able to fabricate even the most intricate patterned floors.*

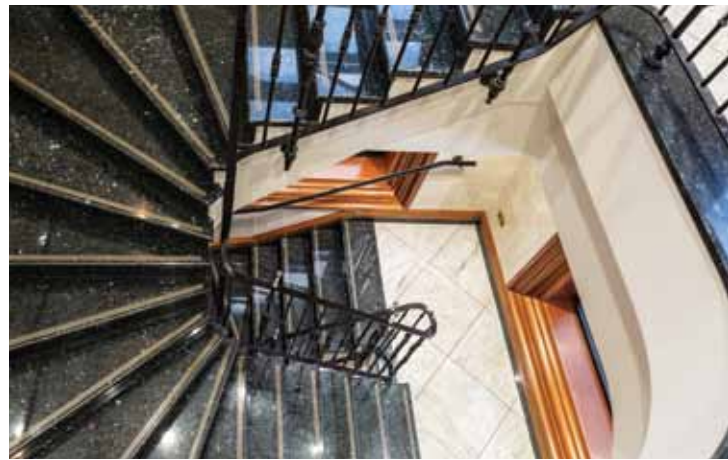
Let us help you create inspirational patterned floors for luxurious homes, hotels, office and religious buildings. Our CAD technicians will ensure every piece is accurately drawn before manufacture.



# Staircases.

*The addition of a natural stone staircase to either a residential or commercial projects is the ultimate statement of quality and luxury. Whether interior or exterior a bespoke marble, limestone, quartz, or granite staircase in a home, office buildings, hotel or religious institution will always give that wow factor!*

We can manufacture to precision right here in our factory. Laser templing as standard ensures a high quality finish. Tactile edgings, contrast nosings, ornate profiled edges, we can manufacture, supply and install to your specification.





## Swimming Pools.

*The addition of a luxury swimming pool in residential or high end commercial environment such as a spa, fitness or country club requires attention to detail and the very best finishes.*

Whether you require an indoor or outdoor swimming pool we are able to supply suitable tiles, paving coping and grates in either natural stone or porcelain.

Having worked with many swimming pool companies for a number of years we have the experience to guide you through that process.



# Bathroom Vanities.

A bespoke bathroom vanity is a luxury addition to any bathroom. We can fabricate this to either contrast or match your wall or floor tiles, which can be supplied as a stand alone item or as part of a full scheme.

The design, material, size and shape is really only limited by your imagination.



## Fabricated Fireplaces & Hearths.

*Fireplaces and hearths can be fabricated from a variety of materials including granite, slate, marble and even quartz. Fireplaces can be made in any design from minimalistic and contemporary to intricately ornate masterpieces.*



# Glossary Of Stone Terms.

**Brushed:** A method of ageing stone using metal brushed giving the stone a soft textured finish.

**Calibrated:** When the thickness of a tile or flag has been cut to an exact depth.

**Chiselled Edge:** A form of distressing the edges of stone in order to give them a more rugged, textured and aged appearance.

**Cleft:** Referrers specifically to our Brazilian slate, where the face of the tiles have a natural uneven texture on the surface.

**Cross Cut:** This term relates to the way Travertine has been cut from the block and means it has been cut across the vein, this is the predominant cut and finish of travertine used in this country.

**Filled:** This term related mainly to travertine and referrers to the process of filling the holes with a resin to seal up the natural hole in the stone left when cutting it across the vein.

**Honed:** The mechanical smoothing of stone that gives a matt finish.

**Polished:** Referring to the mechanical buffing of a stone to achieve a high gloss finish. The level of polish achievable varies from stone to stone. This finish is most often found on granite and marbles.

**Riven or Rivened:** A natural bumpy tecture most often found on slate and sandstone. Similar to ripples on the water.

**Rustic:** A product or finish with a natural rugged charm. More likely found in country cottages and traditional style properties.

**Tumbled:** This is process whereby stone is aged to resemble a worn finish. The stone is spun in a tumbling machine leaving a soft texture and a rounded edge.

**Unfilled:** Often referring to travertine that has been cross cut and left in its natural state, i.e not filled with resin.

# Our Stock Buying Guide.

*As a business to business distributor Rockford products are sold via retailers, tilers, contractors and designers. We deliver throughout the UK and Europe.*

To select a product, browse through this catalogue or on our website: [www.rockfordcompany.co.uk](http://www.rockfordcompany.co.uk)

Feel free to call us or speak to your retailer to help with selection advice.

We supply our customers with free 100 x 100mm samples to assist in their selection, samples help visualise the texture and finish of the product. Samples can be requested via your retailer, on our website, by email or over the phone.

Many of our retailers hold full size tile samples and we are happy to give these out on a case by case basis.

Please note that natural stone will always have variation between tile to tile. We hope that is why people fall in love with stone. We do endeavour show the variation in our pictures and give the most accurate representation possible.

It is important that you measure the area to be tiled correctly, allowing for wastage taking in to account your desired pattern. You would also need to consider access to the property and lead times if applicable.

Once you have all this information and decided on the stone you wish to purchase you are ready to order.

Don't forget, if you need help you can contact us for assistance any time.







**Rochford Intertrade Ltd**

Road Beta, Brooks Lane Industrial Estate  
off Brooks Lane, Middlewich. Cheshire. CW10 0QF

Telephone: +44 (0) 1606 841 000 • Fax: +44 (0) 1606 841 555 • Email: [sales@rockfordcompany.co.uk](mailto:sales@rockfordcompany.co.uk)

[www.rockfordcompany.co.uk](http://www.rockfordcompany.co.uk)