



INNATE IMMUNITY

Macrophages

Part of AbD Serotec
Innate Immunity Range

Research Areas

- Apoptosis & Cell Viability
- Complement
- Cytokines & Chemokines
- Pattern Recognition Receptors
- Toll-like Receptors

Cell Types

- Dendritic Cells
- **Macrophages**
- NK Cells & Receptors

Application specific antibodies and reagents for immunological research

AbD Serotec offers an extensive range of antibodies against macrophage markers:

- Includes antibodies to all the major markers at all stages of the maturation process and less well known and more rarely expressed markers
- Highly cited
- Wide application range, with a focus on Flow Cytometry, Immunohistochemistry and Western Blotting
- Species focus of human, mouse and rat and many veterinary species are also available

Featured Product: Murine macrophage marker antibody F4/80 (MCA497)

F4/80 is a protein found on the cell membrane of mouse macrophage and microglial cells. Clone Cl:A3-1 is the original clone generated against the F4/80 antigen. F4/80 is the most well-known and extensively cited mouse macrophage marker.

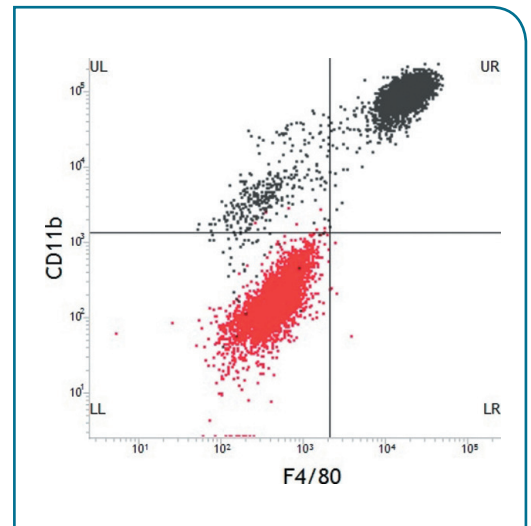
Citations: Over 900 on CiteAb

Applications:

Flow Cytometry, Immunofluorescence, Immunohistochemistry - frozen and paraffin, Immunoprecipitation, Western Blotting, Electron Microscopy, Radioimmunoassays and Resin sections

Related Products:

Mouse macrophage markers: CD11b (MCA711, clone 5C6 & MCA74, clone M1/70.15), CD68 (MCA1957, clone FA-11), Ly6C (MCA2389, clone ER-MP20).
Human macrophage markers: CD80 (MCA2071, clone MEM233), CD11b (MCA551, clone ICRF44), CD14 (MCA596, clone UCHM1 & MCA1568, clone TÜK4).
Rat macrophage markers: CD68 (MCA341, clone ED1), CD11b (MCA275, clone OX-42), CD163 (MCA342, clone ED2)



Anti-mouse F4/80 (MCA497) Flow Cytometry analysis

FSC/SSC gated mouse peritoneal macrophages dual stained with F4/80-FITC conjugated (MCA497F) at a 1/5 dilution and CD11b-Alexa Fluor® 647 conjugated (MCA74A647) at a 1/5 dilution. Isotype control pair in red (MCA1125A647 & MCA1125F). Fc receptors were blocked by mouse seroblock (BUF041B).

AbD Serotec offers a broad range of products for studying macrophages. A selection of products is shown in the tables below, for a full product listing go to abdserotec.com/macrophages

Anti-Human

Specificity	Clone	Applications	Formats	Product Code**
CD11b	ICRF44	FC, FN, IHC-F*, IP	Pur, A647, A700, Az Fr, FITC, RPE, RPE-A647	MCA551
CD11c	BU15	FC, IHC-F*, IP	Pur, A488, A647, FITC, RPE	MCA2087
CD14	UCHM1	FC, FN, IF/ICC, IHC-F*, IP	Pur, A647, APC, Biot, FITC, LE, RPE	MCA596
CD14	TÜK4	E, FC, FN, WB	Pur, A647, A700, Biot, FITC, LE, PB, RPE, RPE-A647, RPE-A750	MCA1568
CD14	MEM-18	E, FC, IP, WB*	Pur, FITC, RPE	MCA2185
CD14	61D3	FC	RPE-Cy5, RPE-Cy5.5	MCA2804
CD16	DJ130c	FC, IHC-F, IHC-P*	Pur, A488, A647, A700, Biot, RPE	MCA2537
CD16	LNK16	FC, IP	Pur, A647, Biot, FITC, LE	MCA1193
CD16	KD1	FC, FN*	Pur, FITC	MCA5665
CD163	EDHu-1	E, FC, IF/ICC, IHC-F, IHC-P, IM, WB	Pur, FITC	MCA1853
CD169	7-239	FC, FN, IHC-F*, IP	Pur, A488, A647, FITC, LE, RPE	MCA2517
CD206	15-2	FC, IF/ICC, IHC-F, WB*	Pur	MCA2155
CD206	7-450	IHC-F	Pur	MCA2519
CD281	GD2.F4	FC	Pur	MCA2153
CD282	TLR2.3	FC, IHC-F	Pur, A647, FITC, RPE	MCA2152
CD282	11G7	FC, FN, IP	Pur, A488, A647, Biot, FITC, LE, RPE	MCA2484
CD282	Polyclonal	IHC-P*, WB	Pur	AHP1635
CD284	HTA125	FC, FN, IP, WB	Pur, A488, A647, Biot, FITC, LE, RPE	MCA2061
CD288	Polyclonal	WB	Pur	AHP868
CD31	WM59	FC, IP	Pur, A647, Biot, FITC, RPE	MCA1738
CD62L	FMC46	FC, IHC-F, IP	Pur, FITC, RPE	MCA1076G
CD64	10.1	FC, FN, IF/ICC	Pur, A647, Biot, FITC, LE, RPE	MCA756G
CD68	KP1	FC*, IF/ICC, IP, IHC-P*, WB	Pur, FITC, RPE	MCA5709
CD80	MEM-233	FC, IP, WB	Pur, A647, Az Fr, FITC, RPE	MCA2071
CD80	2D10	FC	RPE-Cy5	MCA2813C
CD86	BU63	FC, IHC-F, IP	Pur, FITC, RPE, RPE-Cy5	MCA1118
VEGF	Polyclonal	E, FN, IHC-P*, WB	Pur, Biot	AHP831

Multicolor Reagents

Specificity	Clone	Applications	Formats	Product Code**
Anti-human CD45/CD14	F10-89-4/UCHM1	FC	FITC/RPE	DC008
Anti-human CD3/CD16	UCHT1/DJ130c	FC	FITC/RPE	DC004
Anti-mouse Ly6C/CD31	ERMP20/ERMP12	FC	A488/RPE	DC053
Anti-mouse Ly6C/CD31	ERMP20/ERMP12	FC	A488/RPE-A647	DC054
Anti-mouse CD11b/CD115	M1/70.15/604B5 2E11	FC	A488/RPE	DC055
Anti-mouse Ly6C/CD115/CD11b	ERMP20/604B5 2E11/M1/70.15	FC	A488/RPE/RPE-A647	TC015
Anti-mouse Ly6C/CD115/CD31	ERMP20/604B5 2E11/ERMP12	FC	A488/RPE/RPE-A647	TC016
Anti-mouse Ly6C/CD115/CD31	ERMP20/604B5 2E11/ERMP12	FC	A488/RPE/A647	TC017

Anti-Mouse

Specificity	Clone	Applications	Formats	Product Code**
CD11b	M1/70.15	FC, FN, IF/ICC, IHC-F, IHC-P*, IP	Pur, A488, A647, A700, Biot, FITC, LE, RPE, RPE-A647, RPE-A750, RPE-Cy5	MCA74
CD11b	5C6	FC, FN, IF/ICC, IHC-F, IP	Pur, FITC, LE, RPE	MCA711
CD115	604B5 2E11	FC, FN	Pur, Az Fr, RPE	MCA1898
CD14	biG57	FC	RPE	MCA2746PE
CD14	biG53	FC	RPE	MCA2745PE
CD16	AT154-2	FC, IHC-F	Pur, FITC	MCA5998
CD16-2	AT137	FC, IHC-F	Pur, FITC	MCA5999
CD169	MOMA-1	FC, IF/ICC, IHC-F	Pur, A647, FITC, S/N	MCA947
CD169	3D6.112	FC, IF/ICC, IHC-F*	Pur, FITC, LE	MCA884
CD282	6C2	FC, IP	Pur, A488	MCA2266
CD282	Polyclonal	IHC-P*, WB	Pur	AHP1635
CD32B	AT130-5	FC	Pur, FITC	MCA6000
CD34	MEC14.7	FC, IHC-P, IP	Pur, A488, A647, FITC, LE, RPE	MCA1825
CD38	90	FC, IHC-F, IP	Pur, FITC, RPE	MCA1511R
CD43	1B11	FC, IHC-F, IP, WB	Pur	MCA4702GA
CD62L	MEL-14	FC, IHC-F, IP	Pur, RPE	MCA1259G
CD64	AT152-9	FC, IHC-F	Pur, FITC	MCA5997
CD68	FA-11	FC*, IF/ICC, IHC-F, IHC-P*, IP, WB*	Pur, A488, A647, A700, Biot, FITC, LE, RPE	MCA1957
CD86	PO3	FC	Pur, A488, A647, FITC, RPE	MCA2463
CD86	RMMP-2	FC	Pur, FITC	MCA1587T
F4/80	Cl:A3-1	EM, FC, FN, IF/ICC, IHC-F, IP, IHC-P*, R, WB	Pur, A488, A647, A700, APC, Biot, FITC, PB, LE, RPE, RPE-A647, RPE-A750, S/N	MCA497
Ly-6C	ER-MP20	FC, IHC-F, IP	Pur, A488, A647, Biot, FITC, LE, RPE	MCA2389
MARCO	ED31	FC, IF/ICC, IHC-F, WB	Pur, FITC, RPE	MCA1849

Anti-Rat

Specificity	Clone	Applications	Formats	Product Code**
CD11b	OX-42	FC, IF/ICC, IHC-F, IP	Pur, A488, A647, A700, Biot, FITC, LE, PB, RPE, RPE-A647	MCA275
CD11b	ED7	FC, FN*, IHC-F*	Pur	MCA618R
CD11b	ED8	FC, IHC-F*	Pur, FITC, RPE	MCA619R
CD163	ED2	FC, IF/ICC, IHC-F, IP, IHC-P*, WB	Pur, A647, Biot, FITC, LE, RPE	MCA342R
CD169	ED3	FC, IF/ICC, IHC-F, IP	Pur	MCA343R
CD172a	OX41	FC, IHC-F, IHC-P*, WB	Pur, Az Fr., Biot, FITC, RPE	MCA274R
CD172a	ED9	FC, IHC-F*, IP, WB	Pur, FITC, RPE	MCA620R
CD200R1	OX-102	FC, FN, IHC-F, IP, WB	Pur, Biot, FITC, LE, RPE	MCA1959
CD31	TLD-3A12	E, FC, IF/ICC, IHC-F, WB	Pur, A488, A647, Biot, FITC, LE, RPE	MCA1334G
CD68	ED1	FC*, IF/ICC, IHC-F, IP, IHC-P*, R, WB	Pur, A488, A647, A700, Biot, FITC, RPE	MCA341R

*Requires special treatment, refer to product datasheet. **Refer to the website for each format specific product code. Abbreviations: Axxx= Alexa Fluor®, Az Fr = Azide Free, Biot = Biotin, E = ELISA, EM = Electron Microscopy, FC = Flow Cytometry, FN = Functional Assay, IF/ICC = Immunofluorescence/Immunocytochemistry, IHC-F = Immunohistochemistry - Frozen (Cryostat), IHC-P = Immunohistochemistry - Paraffin, IP = Immunoprecipitation, LE = Low Endotoxin, PB = Pacific Blue™, Pur = Purified, S/N = Supernatant, WB = Western Blotting.